

RECEIVED

Form 3160-5  
(August 2007)UNITED STATES  
DEPARTMENT OF THE INTERIOR  
BUREAU OF LAND MANAGEMENT

MAY 22 2018

FORM APPROVED  
OMB No. 1004-0137  
Expires: July 31, 2010

5. Lease Serial No.

NMSF-078410

6. If Indian, Allottee or Tribe Name

## SUNDRY NOTICES AND REPORTS ON WELLS

Do not use this form for proposals to drill or to re-enter an abandoned well. Use Form 3160-3 (APD) for such proposals.

SUBMIT IN TRIPLICATE - Other instructions on page 2.

1. Type of Well

☐ Oil Well☒ Gas Well☐ Other

2. Name of Operator

Hilcorp Energy Company

3a. Address

382 Road 3100, Aztec, NM 87410

3b. Phone No. (include area code)

505-599-3400

7. If Unit of CA/Agreement, Name and/or No.

8. Well Name and No.

San Juan 29-5 Unit 4C

9. API Well No.

30-039-29351

4. Location of Well (Footage, Sec., T., R., M., or Survey Description)

Surface

Unit F (SENW) 2435' FNL &amp; 2315' FWL, Sec. 6, T29N, R05W

10. Field and Pool or Exploratory Area

Gobenador PC/Blanco Mesaverde

11. Country or Parish, State

Rio Arriba

New Mexico

12. CHECK THE APPROPRIATE BOX(ES) TO INDICATE NATURE OF NOTICE, REPORT OR OTHER DATA

## TYPE OF SUBMISSION

☒ Notice of Intent☐ Subsequent Report☐ Final Abandonment Notice

## TYPE OF ACTION

☐ Acidize☐ Alter Casing☐ Casing Repair☐ Change Plans☐ Convert to Injection☐ Deepen☐ Fracture Treat☐ New Construction☐ Plug and Abandon☐ Plug Back☐ Production (Start/Resume)☐ Reclamation☒ Recomplete☐ Temporarily Abandon☐ Water Disposal☐ Water Shut-Off☐ Well Integrity☐ Other

13. Describe Proposed or Completed Operation: Clearly state all pertinent details, including estimated starting date of any proposed work and approximate duration thereof.

If the proposal is to deepen directionally or recompleate horizontally, give subsurface locations and measured and true vertical depths of all pertinent markers and zones. Attach the bond under which the work will be performed or provide the Bond No. on file with BLM/BIA. Required subsequent reports must be filed within 30 days following completion of the involved operations. If the operation results in a multiple completion or recompleation in a new interval, a Form 3160-4 must be filed once Testing has been completed. Final Abandonment Notices must be filed only after all requirements, including reclamation, have been completed and the operator has determined that the site is ready for final inspection.)

Hilcorp Energy Company plans to recompleate the subject well in the Pictured Cliffs formation and downhole commingle the existing Mesaverde with the Pictured Cliffs. Attached is the PC C102, recompleate procedure & wellbore schematic. The DHC application will be submitted and approved before the work proceeds.

Notify NMOCD 24 hrs  
prior to beginning  
operations

NMOCD

SEE ATTACHED  
FOR CONDITIONS  
OF APPROVAL

MAY 30 2018

DISTRICT III

BLM'S APPROVAL OR ACCEPTANCE OF THIS  
ACTION DOES NOT RELIEVE THE LESSEE AND  
OPERATOR FROM OBTAINING ANY OTHER  
AUTHORIZATION REQUIRED FOR OPERATIONS  
ON FEDERAL AND INDIAN LANDS

14. I hereby certify that the foregoing is true and correct. Name (Printed/Typed)

Etta Trujillo

Title Operations/Regulatory Technician - Sr.

Signature



Date

5-22-18

THIS SPACE FOR FEDERAL OR STATE OFFICE USE

Approved by



Title Petroleum Engineer

Date 5/24/2018

Conditions of approval, if any, are attached. Approval of this notice does not warrant or certify that the applicant holds legal or equitable title to those rights in the subject lease which would entitle the applicant to conduct operations thereon.

Office FFO

Title 18 U.S.C. Section 1001 and Title 43 U.S.C. Section 1212, make it a crime for any person knowingly and willfully to make to any department or agency of the United States any false, fictitious or fraudulent statements or representations as to any matter within its jurisdiction.

(Instruction on page 2)

NMOCD

5

**District I**

1625 N. French Dr., Hobbs, NM 88240  
Phone:(575) 393-6161 Fax:(575) 393-0720

**District II**

811 S. First St., Artesia, NM 88210  
Phone:(575) 748-1283 Fax:(575) 748-9720

**District III**

1000 Rio Brazos Rd., Aztec, NM 87410  
Phone:(505) 334-6178 Fax:(505) 334-6170

**District IV**

1220 S. St Francis Dr., Santa Fe, NM 87505  
Phone:(505) 476-3470 Fax:(505) 476-3462

**State of New Mexico**  
**Energy, Minerals and Natural**  
**Resources**  
**Oil Conservation Division**  
**1220 S. St Francis Dr.**  
**Santa Fe, NM 87505**

Form C-102

August 1, 2011

Permit 252699

**WELL LOCATION AND ACREAGE DEDICATION PLAT**

1. API Number 30-039-29351	2. Pool Code 77440	3. Pool Name GOBERNADOR PICTURED CLIFFS (GAS)
4. Property Code 318837	5. Property Name SAN JUAN 29 5 UNIT	6. Well No. 004C
7. OGRID No. 372171	8. Operator Name HILCORP ENERGY COMPANY	9. Elevation 6661

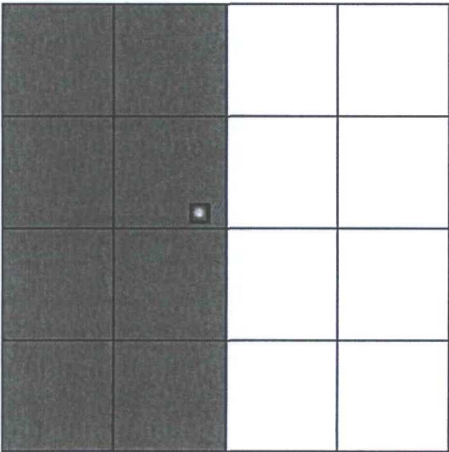
**10. Surface Location**

UL - Lot F	Section 6	Township 29N	Range 05W	Lot Idn	Feet From 2435	N/S Line N	Feet From 2315	E/W Line W	County RIO ARRIBA
---------------	--------------	-----------------	--------------	---------	-------------------	---------------	-------------------	---------------	----------------------

**11. Bottom Hole Location If Different From Surface**

UL - Lot	Section	Township	Range	Lot Idn	Feet From	N/S Line	Feet From	E/W Line	County
12. Dedicated Acres 320.22 W/2	13. Joint or Infill			14. Consolidation Code			15. Order No.		

**NO ALLOWABLE WILL BE ASSIGNED TO THIS COMPLETION UNTIL ALL INTERESTS HAVE BEEN CONSOLIDATED OR A NON-STANDARD UNIT HAS BEEN APPROVED BY THE DIVISION**

	<p style="text-align: center;"><b>OPERATOR CERTIFICATION</b></p> <p><i>I hereby certify that the information contained herein is true and complete to the best of my knowledge and belief, and that this organization either owns a working interest or unleased mineral interest in the land including the proposed bottom hole location(s) or has a right to drill this well at this location pursuant to a contract with an owner of such a mineral or working interest, or to a voluntary pooling agreement or a compulsory pooling order heretofore entered by the division.</i></p> <p>E-Signed By: <i>Etta Trujillo</i> Title: Operations/Regulatory Tech Date: 05/22/2018</p> <hr/> <p style="text-align: center;"><b>SURVEYOR CERTIFICATION</b></p> <p><i>I hereby certify that the well location shown on this plat was plotted from field notes of actual surveys made by me or under my supervision, and that the same is true and correct to the best of my belief.</i></p> <p>Surveyed By: Jason C. Edwards Date of Survey: 8/7/2004 Certificate Number: 15269</p>
---	--



HILCORP ENERGY COMPANY  
SAN JUAN 29-5 UNIT 4C  
PICTURED CLIFFS RECOMPLETION SUNDRY

JOB PROCEDURES

1. MIRU service rig and associated equipment; test BOP.
2. TOOH with 2 3/8" tubing set at 5,819'.
3. Set a 4-1/2" cast iron bridge plug at +/- 3,830' to isolate the **Mesa Verde**. Note: TOC at 3,145' by CBL.
4. Load the hole and pressure test the casing to frac pressure.
5. N/D BOP, N/U frac stack and test frac stack to frac pressure.
6. Perforate and frac the **Pictured Cliffs** in a single stage (Top Perforation @ 3,613'; Bottom Perforation @ 3,679').
7. Isolate frac stage with a composite bridge plug.
8. Nipple down frac stack, nipple up BOP and test.
9. TIH with a mill and drill out top **Pictured Cliffs** isolation plug.
10. Clean out to **Mesa Verde** isolation plug and, when water and sand rates are acceptable, flow test the **Pictured Cliffs**.
11. Drill out **Mesa Verde** isolation plug and cleanout to PBTD of 6,178'. TOOH.
12. TIH and land production tubing. Get a commingled **Mesa Verde/Pictured Cliffs** flow rate.





HILCORP ENERGY COMPANY  
SAN JUAN 29-5 UNIT 4C  
PICTURED CLIFFS RECOMPLETION SUNDRY

SAN JUAN 29-5 UNIT 4C - CURRENT WELLBORE SCHEMATIC

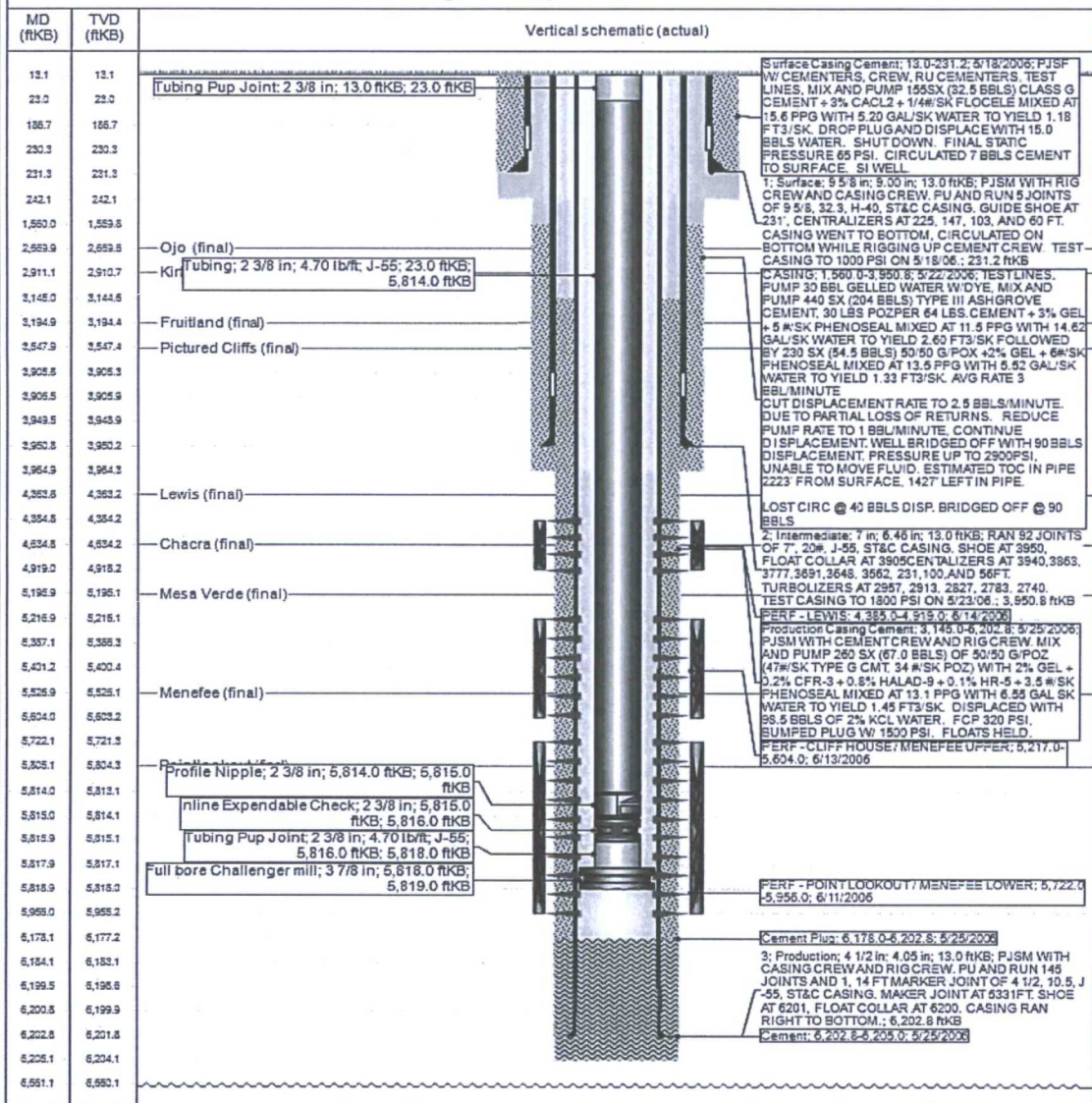


Current Schematic - Version 3

Well Name: SAN JUAN 29-5 UNIT #4C

API / UWI 3003929351	Surface Legal Location 006-029N-005W-F	Field Name MV	License No.	State/Province NEW MEXICO	Well Configuration Type Vertical
Ground Elevation (ft) 6,661.00	Original K5 RT Elevation (ft) 6,674.00	K5-Ground Distance (ft) 13.00	K5-Casing Flange Distance (ft)	K5-Tubing Hanger Distance (ft)	

Vertical, Original Hole, 5/10/2018 4:29:48 PM





# United States Department of the Interior

## BUREAU OF LAND MANAGEMENT

Farmington District Office  
6251 College Blvd. - Suite A  
Farmington, New Mexico 87402  
[www.blm.gov/nm](http://www.blm.gov/nm)



### ***CASING REPAIR, WORKOVER, AND RECOMPLETION CONDITION OF APPROVAL***

1. If casing repair operations are needed, obtain prior approval from this office before commencing repairs.
2. If a CBL or other logs are run, provide this office with a copy.
3. After any casing repair operations, test cement squeeze to a minimum of 500# for 30 minutes with no more than 10 % pressure fall off in the 30 minutes test period. Provide test chart with your subsequent report of operations
4. A properly functioning BOP and related equipment must be installed prior to commencing workover, casing repair, and/or recompletion operations.
5. **Contact this office at (505) 564-7750 prior to conducting any cementing operations**

#### ***SPECIAL STIPULATIONS:***

1. **Pits will be fenced during work-over operation.**
2. **All disturbance will be kept on existing pad.**
3. **All pits will be pulled and closed immediately upon completion of the recompletion and work-over activities.**
4. **Pits will be lined with an impervious material at least 12 mils thick.**