

UNITED STATES  
DEPARTMENT OF THE INTERIOR  
BUREAU OF LAND MANAGEMENT

RECEIVED

FORM APPROVED  
OMB No. 1004-0137  
Expires: October 31, 2014

MAY 01 2018

SUNDRY NOTICES AND REPORTS ON WELLS

Do not use this form for proposals to drill or to re-enter an abandoned well. Use Form 3160-3 (APD) for such proposals.

5. Lease Serial No.

Contract No. 126

6. If Indian, Allottee, or Tribe Name

Jicarilla Apache Tribe

7. If Unit or CA/Agreement Name and/or No.

8. Well Name and No.

Apache No. 116

9. API Well No.

30-039-21892

10. Field and Pool, or Exploratory Area

Lindrieth Gallup-Dakota West

11. County or Parish, State

Rio Arriba, New Mexico

SUBMIT IN TRIPLICATE - Other Instructions on page 2.

1. Type of Well



Oil Well



Gas Well



Other

2. Name of Operator

Enervest Operating, LLC

3a. Address

1001 Fannin St., Suite 800 Houston, TX 77002-6707

3b. Phone No. (include area code)

713-659-3500

4. Location of Well (Footage, Sec., T., R., M., or Survey Description)

Sec. 12, T24N, R04W 660' FNL 1980' FWL (UL C)

12. CHECK THE APPROPRIATE BOX(ES) TO INDICATE NATURE OF NOTICE, REPORT, OR OTHER DATA

TYPE OF SUBMISSION

TYPE OF ACTION



Notice of Intent



Acidize



Deepen



Production (Start/Resume)



Water Shut-Off



Subsequent Report



Alter Casing



Fracture Treat



Reclamation



Well Integrity



Final Abandonment Notice



Change Plans



Plug and Abandon



Temporarily Abandon



Other



Convert to Injection



Plug Back



Water Disposal

13. Describe Proposed or Completed Operation: Clearly state all pertinent details, including estimated starting date of any proposed work and approximate duration of the proposal is to deepen directionally or recompleting horizontally, give subsurface locations and measured and true vertical depths or pertinent markers and zones. Attach the Bond under which the work will be performed or provide the Bond No. on file with the BLM/BIA. Required subsequent reports must be filed within 30 days following completion of the involved operations. If the operation results in a multiple completion or recompleting in a new interval, a Form 3160-4 must be filed. Testing has been completed. Final Abandonment Notice must be filed only after all requirements, including reclamation, have been completed, and the operator is

Enervest Operating, LLC respectfully requests authorization to plug and abandon this well.

Please see attached Plug and Abandonment Procedure, Wellbore Diagrams and Site Reclamation Plan.

Notify NMOCD 24 hrs  
prior to beginning  
operations

NMOCD

MAY 11 2018

DISTRICT III

14. I hereby certify that the foregoing is true and correct. Name (Printed/Typed)

Shelly Doescher

Title

Agent

Signature

Shelly Doescher

Date

April 29, 2018

THIS SPACE FOR FEDERAL OR STATE OFFICE USE

Approved by

Shelly Doescher

Title

Sup MRS

Date

5/2/18

Conditions of approval, if any are attached. Approval of this notice does not warrant or certify that the applicant holds legal or equitable title to those rights in the subject lease which will entitle the applicant to conduct operations thereon.

Office

KFO

Title 18 U.S.C. Section 1001 and Title 43 U.S.C. Section 1212, make it a crime for any person knowingly and willfully to make any department or agency of the United States or its officers or employees to utter or publish any false, fictitious or fraudulent statements or representations as to any matter within its jurisdiction.

NMOCD AV

## PLUG AND ABANDONMENT PROCEDURE

December 15, 2015

### Apache No. 116

Lindrith Gallup / Dakota West

660' FNL, 1980' FWL, Section 12, T24N, R4W, Rio Arriba County, New Mexico

API 30-039-21892 Lat/Long 36.33026, -107.2108 NAD83

Note: All cement volumes use 100% excess outside pipe and 50' excess inside. The stabilizing wellbore fluid will be 8.3 ppg, sufficient to balance all exposed formation pressures. All cement will be Class B, mixed at 15.6 ppg with a 1.18 cf/sx yield.

1. This project will use an A-Plus steel tank to handle waste fluids circulated from the well and cement wash up.
2. Install and test location rig anchors. Comply with all NMOCD, BLM, and Operator safety regulations. MOL and RU daylight pulling unit. Conduct safety meeting for all personnel on location. Record casing, tubing and bradenhead pressures. NU relief line and blow down well. Kill well with water as necessary and at least pump tubing capacity of water down the tubing. ND wellhead and NU BOP. Function test BOP.
3. Rods: Yes ☐, No ☒, Unknown ☐  
Tubing: Yes ☒, No ☐, Unknown ☐, Size 231 jts 2.375", Length unknown  
Packer: Yes ☐, No ☒, Unknown ☐, Type   
If this well has rods or a packer, then modify the work sequence in step #2 as appropriate.  
Note: Round trip gauge ring to 6376' or as deep as possible.
4. **NOTE: BLM requires a CBL log to be run on all wells where the cement did not circulate to surface or a CBL log was not previously run. This procedure is prepared with the understanding that it may be modified based on the TOC from the CBL.**
5. **Plug #1 (Dakota / Gallup perforations and tops, 6376' – 6276'):** RIH and set 4.5" cement retainer at 6376'. Pressure test tubing to 1000 PSI. Load casing with water and circulate well clean. Pressure test casing to 800#. **If the casings do not test, then spot or tag subsequent plugs as appropriate.** Circulate well clean. Mix 12 sxs Class B cement inside casing above CR to isolate the Dakota / Gallup intervals. PUH.
6. **Plug #2 (Mancos top, 5586' – 5486'):** Mix and pump 12 sxs Class B cement and spot a balanced plug inside casing to cover the Mancos top. TOH.
7. **Plug #3 (Mesaverde top, 4851' – 4751'):** Perforate squeeze holes at 4851'. Attempt to establish rate if the casing pressure tested. TIH and set CR at 4801'. Mix and pump 51 sxs Class B cement, squeeze 39 sxs outside 4.5" casing and leave 12 sxs inside casing to cover the Mesaverde top. PUH.
8. **Plug #4 (Chacra top, 4071' - 3971'):** Mix and pump 12 sxs Class B cement and spot a balanced plug inside casing to cover the Chacra top. PUH.

9. **Plug #5 (Pictured Cliffs , Fruitland, Kirtland and Ojo Alamo tops, 3230' - 2648')**: Mix and pump 48 sxs Class B cement and spot a balanced plug inside casing to cover through the Chacra top. TOH.
10. **Plug #6 (Nacimiento top, 1376' – 1276')**: Perforate squeeze holes at 1376'. Attempt to establish rate if the casing pressure tested. TIH and set CR at 1326'. Mix and pump 51 sxs Class B cement, squeeze 39 sxs outside 4.5" casing and leave 12 sxs inside casing to cover the Nacimiento top. TOH and LD tubing.
11. **Plug #7 (8.625" surface casing shoe, 434' - Surface)**: Perforate 3 squeeze holes at 434'. Establish circulation out bradenhead with water and circulate the BH annulus clean. Mix approximately 140 sxs Class B cement and pump down the 4.5" casing to circulate good cement out bradenhead. Shut in well and WOC.
12. ND cementing valves and cut off wellhead. Fill annuli with cement as necessary. Install P&A marker to comply with regulations. Record GPS coordinate for P&A marker on tower report. Photograph P&A marker in place. RD, MOL and cut off anchors. Restore location per BLM stipulations

# Apache #116

## Current

Lindrith Gallup / Dakota West

660' FNL, 1980' FWL, Section 12, T-24-N, R-4-W, Rio Arriba County, NM

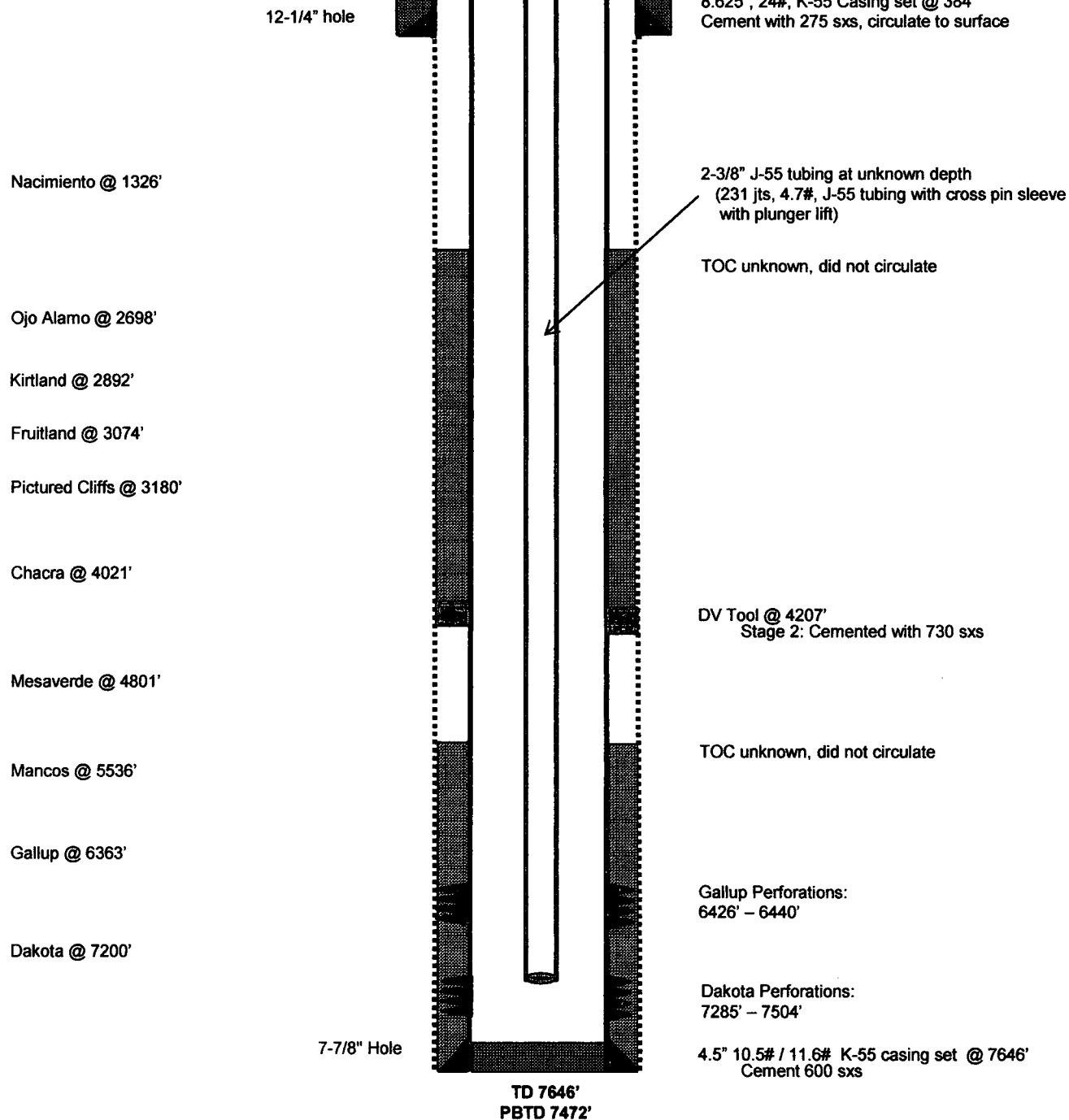
Lat: 36.33026N / Long: -107.2108 W Nad 83 API #30-039-21892

Today's Date 12/15/15

Spud: 1/13/79

Completion: 3/26/79

Elevation: 6890' GI



# Apache #116

## Proposed P&A

Lindrith Gallup / Dakota West

660' FNL, 1980' FWL, Section 12, T-24-N, R-4-W, Rio Arriba County, NM

Lat: 36.33026N / Long: -107.2108 W, Nad 83 API #30-039-21892

Today's Date 12/15/15

Spud: 1/13/79

Completion: 3/26/79

Elevation: 6890' GI

12-1/4" hole

Nacimiento @ 1326'

Ojo Alamo @ 2698'

Kirtland @ 2892'

Fruitland @ 3074'

Pictured Cliffs @ 3180'

Chacra @ 4021'

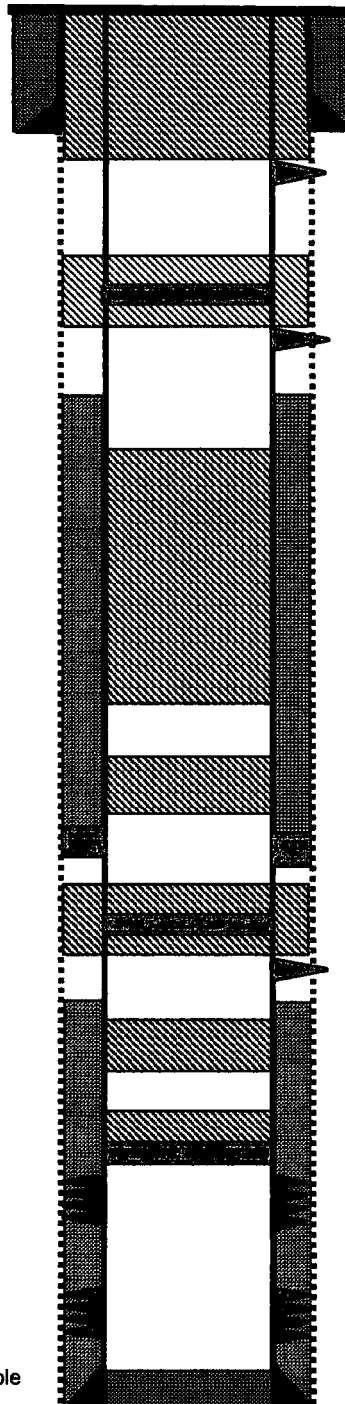
Mesaverde @ 4801'

Mancos @ 5536'

Gallup @ 6363'

Dakota @ 7200'

7-7/8" Hole



TD 7646'  
PBTD 7472'

8.625", 24#, K-55 Casing set @ 384'  
Cement with 275 sxs, circulate to surface

Perforate @ 434'

Plug #7: 434' - 0'  
Class B cement, 140 sxs

Set CR @ 1326'

Perforate @ 1376'

Plug #6: 1376' - 1276'  
Class B cement, 51 sxs:  
12 inside and 39 outside

TOC unknown, did not circulate

Plug #5: 3230' - 2648'  
Class B cement, 48 sxs

DV Tool @ 4207'  
Stage 2: Cemented with 730 sxs

Set CR @ 4801'

Perforate @ 4851'

Plug #3: 4851' - 4751'  
Class B cement, 51 sxs:  
12 inside and 39 outside

TOC unknown, did not circulate

Plug #2: 5586' - 5486'  
Class B cement, 12 sxs

Set CR @ 6376'

Gallup Perforations:  
6426' - 6440'

Plug #1: 6376' - 6276'  
Class B cement, 12 sxs

Dakota Perforations:  
7285' - 7504'

4.5" 10.5# / 11.6# K-55 casing set @ 7646'  
Cement 600 sxs

**UNITED STATES DEPARTMENT OF THE INTERIOR  
BUREAU OF LAND MANAGEMENT  
FARMINGTON DISTRICT OFFICE  
6251 COLLEGE BLVD.  
FARMINGTON, NEW MEXICO 87402**

**Attachment to notice of  
Intention to Abandon:**

**Re: Permanent Abandonment  
Well: Apache No. 116**

**CONDITIONS OF APPROVAL**

**1. Plugging operations authorized are subject to the attached "General Requirements for Permanent Abandonment of Wells on Federal and Indian Lease."**

**2. Farmington Office is to be notified at least 24 hours before the plugging operations commence (505) 564-7750.**

**3. The following modifications to your plugging program are to be made:**

- a) Set Plug #2 (5485 - 5385) ft. to cover the Mancos top. BLM picks top of Mancos at 5435 ft.**
- b) Set Plug #3 (4772 - 4672) ft. inside/outside to cover the Mesaverde top. BLM picks top of Mesaverde at 4722 ft.**
- c) Set Plug #4 (3988 - 3888) ft. to cover the Chacra top. BLM picks top of Chacra at 3938 ft.**
- d) Set Plug #5 (3120 - 2520) ft. to cover the Pictured Cliffs, Fruitland, Kirtland, and Ojo Alamo tops. BLM picks top of Pictured Cliffs at 3070 ft. BLM picks top of Ojo Alamo at 2570 ft.**
- e) Set Plug #6 (1231 - 1131) ft. inside/outside to cover the Nacimiento top. BLM picks top of Nacimiento at 1181 ft.**

**Operator must run a CBL to verify cement top. Submit the electronic copy of the log for verification to the following addresses: [tsalyers@blm.gov](mailto:tsalyers@blm.gov) [Brandon.Powell@state.nm.us](mailto:Brandon.Powell@state.nm.us)**

**You are also required to place cement excesses per 4.2 and 4.4 of the attached General Requirements.**

**Office Hours: 7:45 a.m. to 4:30 p.m.**

**NMOCB  
JUN 08 2018  
DISTRICT III**