

District I (575) 393-6161  
1625 N. French Dr., Hobbs, NM 88240  
District II (575) 748-1283  
811 S. First St., Artesia, NM 88210  
District III (505) 334-6178  
1000 Rio Brazos Road, Aztec, NM 87410  
District IV (505) 827-8198  
1220 S. St. Francis Dr., Santa Fe, NM 87505

State of New Mexico  
Energy Minerals and Natural Resources

Oil Conservation Division  
1220 South St. Francis Dr.  
Santa Fe, NM 87505

NMOCB

JUN 27 2018

DISTRICT III

Form C-106  
Revised August 1, 2011

ACT Permit No.

NOTICE OF INTENTION TO UTILIZE AUTOMATIC CUSTODY TRANSFER EQUIPMENT **3-33**

Operator LOGOS Operating, LLC

Address 2010 Afton Place, Farmington, NM 87401 County San Juan

Lease(s) to be served by this ACT Unit Federal Lease NMNM18463

Pool(s) to be served by this ACT Unit Basin Mancos (97232)

Location of ACT System: Unit L Section 14 Township 23N Range 08W

Order No. authorizing commingling between leases if more than one lease is to be served by this system.

N/A Date \_\_\_\_\_

Order No. authorizing commingling between pools if more than one pool is to be served by this system

N/A Date \_\_\_\_\_

Authorized transporter of oil from this system Whiptail Midstream, LLC

Transporter's address 15 West 6<sup>th</sup> Street, Tulsa, OK 74119

Maximum expected daily through-put for this system: 1365 BBL/Day

If system fails to transfer oil due to malfunction or otherwise, waste by overflow will be averted by:

CHECK ONE: A. ☐ Automatic shut-down facilities B. ☒ Providing adequate available capacity to receive production  
as required by 19.15.18.15.C(8) NMAC during maximum unattended time of lease operation  
19.15.18.15.C(9) NMAC

If "A" above is checked, will flowing wells be shut-in at the header manifold or at the wellhead?

Maximum well-head shut-in pressure \_\_\_\_\_

If "B" above is checked, how much storage capacity is available above the normal high working level of the

surge tank 3600 BBLs.

What is the normal maximum unattended time of lease operation? Sixteen (16) Hours.

What device will be used for measuring oil in this ACT unit?

CHECK ONE: ☐ Positive displacement meter ☐ Weir-type measuring vessel  
☐ Positive volume metering chamber ☒ Other; describe Coriolis Meter

Remarks: This LACT will be selling to pipeline.

OPERATOR:

I hereby certify above information is true and complete to best of my knowledge and subject ACT system will be installed and operated in accordance with Rule 19.15.18.15 NMAC. Approval of this Form

C-106 does not eliminate necessity of an approved C-104 prior to running any oil or gas from this system.

Signature Tamra Sessions

Printed Name & Title Tamra Sessions

Email Address tsessions@logosresourcesllc.com

Date 6/26/18 Telephone 505-324-4145

OIL CONSERVATION DIVISION

Approved by: Brenda Randall

Title: Deputy Oil & Gas Inspector, District #3

Date: 6/28/18

INSTRUCTIONS: Submit one copy of Form C-106 with following attachments to appropriate district office.

- 1) Lease plat showing all wells which will be produced in ACT system.
- 2) Schematic diagram of battery and ACT equipment showing all major components and means employed to prove accuracy of measuring device.
- 3) Letter from transporter agreeing to utilization of ACT system as shown on schematic diagram.

**NOTICE OF INTENTION TO UTILIZE CUSTODY TRANSFER EQUIPMENT  
ATHENA 2308 14L PIPELINE LACT UNIT**

**WELLS TO BE SERVED BY PIPELINE LACT UNIT:**

**ATHENA 2308 14L 1H / API 30-045-35632 / UNIT L (NW/SW), SEC 14, T23N-R8W, NMPM**

**ATHENA 2308 14L 2H / API 30-045-35633 / UNIT L (NW/SW), SEC 14, T23N-R8W, NMPM**

**ATHENA 2308 14L 3H / API 30-045-35876 / UNIT L (NW/SW), SEC 14, T23N-R8W, NMPM**

**19.15.18.15 AUTOMATIC CUSTODY TRANSFER EQUIPMENT:**

A. Oil shall be received and measured in facilities of an approved design. The facilities shall permit the testing of each well at reasonable intervals and may be comprised of manually gauged, closed stock tanks for which the operator of the ACT system has prepared proper strapping tables, or of ACT equipment. The division shall permit ACT equipment's use only after the operator complies with the following. The operator shall file with the division form C-106 and receive approval for use of the ACT equipment prior to transferring oil through the ACT system. The carrier shall not accept delivery of oil through the ACT system until the division has approved form C-106.

- *See flow process diagram attached.*

B. The operator of the ACT system shall submit form C-106 to the appropriate division district office, which is accompanied by the following:

- (1) plat of the lease showing all wells that the any well operator will produce into the ACT system;
  - *Attached as part of Form C-106 Notice of Intent.*
- (2) schematic diagram of the ACT equipment, showing on the diagram all major components such as surge tanks and their capacity, extra storage tanks and their capacity, transfer pumps, monitors, reroute valves, treaters, samplers, strainers, air and gas eliminators, back pressure valves and metering devices (indicating type and capacity, *i.e.* whether automatic measuring tank, positive volume metering chamber, weir-type measuring vessel or positive displacement meter); the schematic diagram shall also show means employed to prove the measuring device's accuracy; and
  - *Attached as part of Form C-106 Notice of Intent.*
- (3) letter from transporter agreeing to utilization of ACT system as shown on schematic diagram.
  - *Attached as part of Form C-106 Notice of Intent.*

C. The division shall not approve form C-106 unless the operator of the ACT system will install and operate the ACT system in compliance with the following requirements.

- (1) Provision is made for accurate determination and recording of uncorrected volume and applicable temperature, or of temperature corrected volume. The system's overall accuracy shall equal or surpass manual methods.
  - *The LACT system is more accurate when compared to manual tank. It is proved per BLM Onshore Order #4 Measurement of Oil and API MPMS Chapter 4 Proving Systems; with a volumetric prover that meets the requirements set forth in Onshore Order #4. The LACT also has a temperature RTD which will be calibrated semi-annually, unless more frequent verification is requested by the division.*
- (2) Provision is made for representative sampling of the oil transferred for determination of API gravity and BS&W content.
  - *The LACT is equipped with a flow proportional sampler (sample probe and actuated valve). The sampled fluid is stored in a sealed cylinder that is used for API gravity and S&W determination.*
- (3) Provision is made if required by either the oil's producer or the transporter to give adequate assurance that the ACT system runs only merchantable oil.
  - *The LACT is equipped with a water cut analyzer that communicated with the flow computer. When the S&W set point is reached the divert valve will engage sending non-merchantable oil to a divert tank. The set point can be adjusted in the flow computer but only if agreed upon by both shipper and producer.*
- (4) Provision is made for set-stop counters to stop the flow of oil through the ACT system at or prior to the time the allowable has been run. Counters shall provide non-reset totalizers that are visible for inspection at all times.
  - *The Coriolis meter has a non-resettable totalizer which is always visibly available on the LCD display.*
- (5) Necessary controls and equipment are enclosed and sealed, or otherwise arranged to provide assurance against, or evidence of, accidental or purposeful mismeasurement resulting from tampering.
  - *Required ports are sealed and tracked in the seal log.*

- (6) The ACT system's components are properly sized to ensure operation within the range of their established ratings. All system components that require periodic calibration or inspection for proof of continued accuracy are readily accessible; the frequency and methods of the calibration or inspection shall be as set forth in Paragraph (12) of Subsection C of 19.15.18.15 NMAC.
- *The Coriolis is proved per BLM Onshore Order #4 Measurement of Oil and API MPMS Chapter 4 Proving Systems; with a volumetric prover that meets the requirements set forth in Onshore Order #4. The prover is NIST traceable and water drawn on a bi-annual basis. Proving will be consistent with Onshore Order #4, unless a variance is granted by the Division. NMOCD representatives are sent the schedule to witness if desired. The temperature transmitter is verified on a semi-annual basis, unless more frequent verification is requested by the Division. The water cut analyzer is calibrated as needed.*
- (7) The control and recording system includes adequate fail-safe features that provide assurance against mismeasurement in the event of power failure, or the failure of the ACT system's component parts.
- *In the event of power failure, the divert valve mechanically goes to "failed state" and no longer sales oil but only sends it to the divert tank.*
  - *All of the historized volume data is stored in the flow computer memory with battery backup and is also transmitted by SCADA, multiple times a day, to an office server. So even during a power failure no oil volume is lost.*
  - *In the event of a malfunction, the LACT unit is programmed to shut off and the divert valve is forced to close and no longer sales oil but only sends it to the divert tank. The malfunction is also logged by the flow computer.*
- (8) The ACT system and allied facilities include fail-safe equipment as may be necessary, including high level switches in the surge tank or overflow storage tank that, in the event of power failure or malfunction of the ACT or other equipment, will shut down artificially lifted wells connected to the ACT system and will shut in flowing wells at the well-head or at the header manifold, in which latter case the operator of the ACT system shall pressure test all flowlines to at least 1½ times the maximum well-head shut-in pressure prior to the ACT system's initial use and every two years thereafter.
- *Hi level switches are in place and will shut the well in at the inlet to the production unit in the event of a full tank. Flow lines were tested to 1 ½ times shut in pressure at initial construction. Testing will commence every two years to ensure piping integrity.*
- (9) As an alternative to the requirements of Paragraph (8) of Subsection C of 19.15.18.15 NMAC the producer shall provide and at all times maintain a minimum of available storage capacity above the normal high working level of the surge tank to receive and hold the amount of oil that may be produced during maximum unattended time of lease operation.
- *N/A*
- (10) In all ACT systems employing automatic measuring tanks, weir-type measuring vessels, positive volume metering chambers or any other volume measuring container, the container and allied components shall be properly calibrated prior to initial use and shall be operated, maintained and inspected as necessary to ensure against incrustation, changes in clingage factors, valve leakage or other leakage and improper action of floats, level detectors, etc.
- *N/A (Coriolis Meter)*
- (11) In ACT systems employing positive displacement meters, the meter and allied components shall be properly calibrated prior to initial use and shall be operated, maintained and inspected as necessary to ensure against oil mismeasurement.
- *The Coriolis is proved per BLM Onshore Order #4 Measurement of Oil and API MPMS Chapter 4 Proving Systems; with a volumetric prover that meets the requirements set forth in Onshore Order #4. The prover is NIST traceable and water drawn on a bi-annual basis. Monthly proving will continue per the rule, unless a variance is granted by the Division. NMOCD representatives are sent the schedule to witness if desired. The temperature transmitter is verified on a semi-annual basis, unless more frequent verification is requested by the Division.*

(12) The operator of the ACT system shall check the measuring and recording devices of ACT systems for accuracy at least once each month unless it has obtained an exception to such determination from the division. Where applicable, the operator of the ACT system shall use API standard 1101, Measurement of Petroleum Hydrocarbons by Positive Displacement Meter. Meters may be proved against master meters, portable prover tanks or prover tanks permanently installed on the lease. If the operator of the ACT system uses permanently installed prover tanks, the distance between the opening and closing levels and the provision for determining the opening and closing readings shall be sufficient to detect variations of 5/100 of one percent. The operator of the ACT system shall file reports of determination on the division form entitled "meter test report" or on another acceptable form in duplicate with the appropriate division district office.

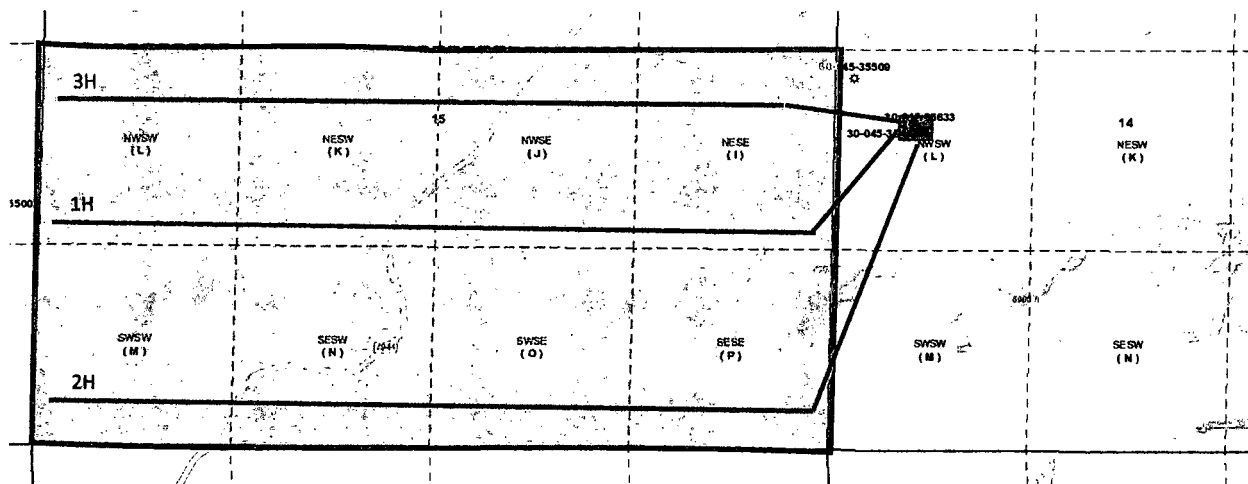
- *The Coriolis is proved per BLM Onshore Order #4 Measurement of Oil and API MPMS Chapter 4 Proving Systems; with a volumetric prover that meets the requirements set forth in Onshore Order #4. The prover is NIST traceable and water drawn on a bi-annual basis. Monthly proving will continue per the rule, unless a variance is granted by the Division. NMOCD representatives are sent the schedule to witness if desired. The temperature transmitter is verified on a semi-annual basis, unless more frequent verification is requested by the Division.*

(13) To obtain an exception to the requirement in Paragraph (12) of Subsection C of 19.15.18.15 NMAC that all measuring and recording devices be checked for accuracy once each month, either the producer or transporter may file a request with the director setting forth facts pertinent to the exception. The application shall include a history of the average factors previously obtained, both tabulated and plotted on a graph of factors versus time, showing that the particular installation has experienced no erratic drift. The applicant shall also furnish evidence that the other interested party has agreed to the exception. The director may then set the frequency for determination of the system's accuracy at the interval which the director deems prudent.

- *N/A*

D. The division may revoke its approval of an ACT system's form C-106 if the system's operator fails to operate it in compliance with 19.15.18.15 NMAC.

[19.15.18.15 NMAC - Rp, 19.15.5.309 NMAC, 12/1/08]






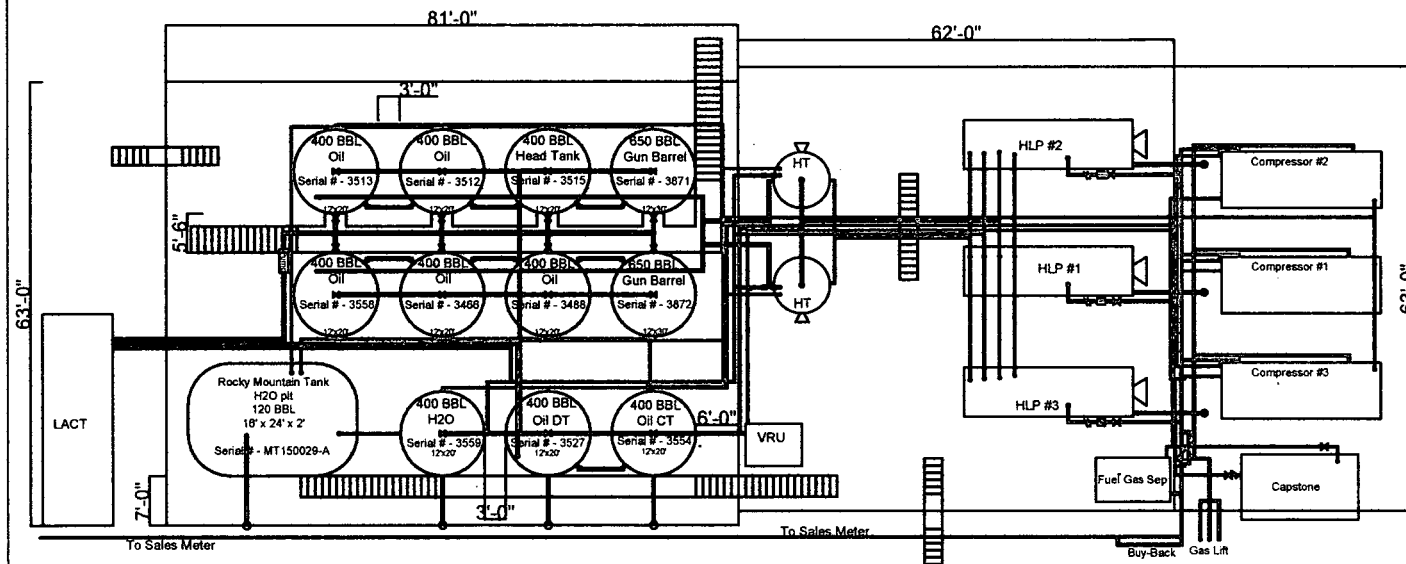
LOGOS OPERATING, LLC

ATHENA 2308 14L PAD

Lease Plat Map

San Juan County, NM

	Well Pad w/LACT Equip
	Lateral
	Lease



Legend		
	Gas	
	Condensate	
	Drain	
	Flash Gas	
	Fuel Gas	
	Load & LACT Lines	
	Oil	
	VRU Lines	
	Water Lines	

No.	Modification/Reason	Date

LOGOS RESOURCES  
2010 Afton Place  
Farmington, NM 87401

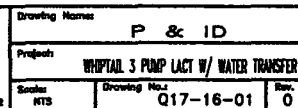
  

Athena 2308 14L  
1H, 2H, 3H

Revision	REV. 5	Date	
	6/21/2018		1/1

P-004 M-004	V-001
SERVED SAMPLE FROM CAPACITY OF 100 GAL RETURNED TO FBI LABORATORY	SERVED SAMPLE FROM CAPACITY OF 100 GAL RETURNED TO FBI LABORATORY
10/11/68 SECTION 100 PER 8 1207	10/11/68 SECTION 100 PER 8 1207



## **Tamra Sessions**

---

**From:** Michael Bullock <michael.bullock@whiptailmidstream.com>  
**Sent:** Tuesday, June 26, 2018 9:06 AM  
**To:** Tamra Sessions; Ernie Johnson  
**Cc:** Kelly Maxwell; Andy Pickle  
**Subject:** RE: C-106 Letter from Transporter: LOGOS - Athena 2308 14L Pad Revised

Tamra,

We approve the use of the Pipeline Transfer LACT equipment on the Athena 2308 14L well pad to transfer product from the wells below to Whiptail Midstream, LLC's pipeline system.

- Athena 2308 14L 1H / API #30-045-35632 / UNIT L (NW/SW) Sec. 14, T23N, R8W, NMPM
- Athena 2308 14L 2H / API #30-045-35633 / UNIT L (NW/SW) Sec. 14, T23N, R8W, NMPM
- Athena 2308 14L 3H / API #30-045-35876 / UNIT L (NW/SW) Sec. 14, T23N, R8W, NMPM

Michael Bullock  
Office: 918.900.2603  
Cell: 405.818.8618

**From:** Tamra Sessions [mailto:tsessions@logosresourcesllc.com]  
**Sent:** Tuesday, June 26, 2018 8:47 AM  
**To:** Michael Bullock <michael.bullock@whiptailmidstream.com>; Ernie Johnson <ernie.johnson@whiptailmidstream.com>  
**Cc:** Kelly Maxwell <kmaxwell@logosresourcesllc.com>; Andy Pickle <andy.pickle@whiptailmidstream.com>  
**Subject:** RE: C-106 Letter from Transporter: LOGOS - Athena 2308 14L Pad Revised

Michael or Ernie, could I please have your reply.

Tamra

**From:** Tamra Sessions  
**Sent:** Thursday, June 21, 2018 11:03 AM  
**To:** Michael Bullock <michael.bullock@whiptailmidstream.com>  
**Cc:** Kelly Maxwell (kmaxwell@logosresourcesllc.com) <kmaxwell@logosresourcesllc.com>  
**Subject:** C-106 Letter from Transporter: LOGOS - Athena 2308 14L Pad Revised

LOGOS is working on the C-106 Letter from Transporter submittal to NMOCD for updating the Athena 2308 14L 1H & 2H well pad to *add one new well*. Please reply back to this email with your approval.

LOGOS Operating, LLC is requesting approval from the transporter to utilize Pipeline Transfer LACT equipment on the Athena 2308 14L well pad. Product from the below listed wells would be produced through the LACT equipment, gathered through LOGOS pipeline, and transferred into Whiptail Midstream, LLC's (transporter) pipeline system through a check meter. Whiptail Midstream, LLC will be responsible for transporting LOGOS Operating, LLC's product to sales.

**Athena 2308 14L PIPELINE LACT UNIT**  
**WELLS TO BE SERVED BY PIPELINE LACT UNIT:**



- Athena 2308 14L 1H / API #30-045-35632 / UNIT L (NW/SW) Sec. 14, T23N, R8W, NMPM
- Athena 2308 14L 2H / API #30-045-35633 / UNIT L (NW/SW) Sec. 14, T23N, R8W, NMPM
- Athena 2308 14L 3H / API #30-045-35876 / UNIT L (NW/SW) Sec. 14, T23N, R8W, NMPM

Tamra Sessions

Regulatory Specialist

Office 505-324-4145

[tsessions@logosresourcesllc.com](mailto:tsessions@logosresourcesllc.com)



DISTRICT I  
1625 N. French Dr., Hobbs, N.M. 88240  
Phone: (575) 393-8161 Fax: (575) 393-0720

DISTRICT II  
811 S. First St., Artesia, N.M. 88210  
Phone: (575) 748-1283 Fax: (575) 748-9720

DISTRICT III  
1000 Rio Brazos Rd., Aztec, N.M. 87410  
Phone: (505) 334-8178 Fax: (505) 334-8170

DISTRICT IV  
1220 S. St. Francis Dr., Santa Fe, NM 87505  
Phone: (505) 476-3480 Fax: (505) 476-3482

State of New Mexico  
Energy, Minerals & Natural Resources Department

## OIL CONSERVATION DIVISION

1220 South St. Francis Dr.  
Santa Fe, NM 87505

Form C-102  
Revised August 1, 2011  
Submit one copy to appropriate  
District Office

☒ AMENDED REPORT  
AS-DRILLED PLAT

### WELL LOCATION AND ACREAGE DEDICATION PLAT

<sup>1</sup> API Number <b>30-045-35632</b>	<sup>2</sup> Pool Code <b>97232</b>	<sup>3</sup> Pool Name <b>BASIN MANCOS</b>
<sup>4</sup> Property Code <b>320689</b>	<sup>5</sup> Property Name <b>ATHENA 2308 14L</b>	<sup>6</sup> Well Number <b>1H</b>
<sup>7</sup> GRID No. <b>289408</b>	<sup>8</sup> Operator Name <b>LOGOS OPERATING, LLC</b>	<sup>9</sup> Elevation <b>6878'</b>

#### <sup>10</sup> Surface Location

UL or lot no.	Section	Township	Range	Lot Idn	Feet from the	North/South line	Feet from the	East/West line	County
L	14	23-N	8-W		2171	SOUTH	571	WEST	SAN JUAN

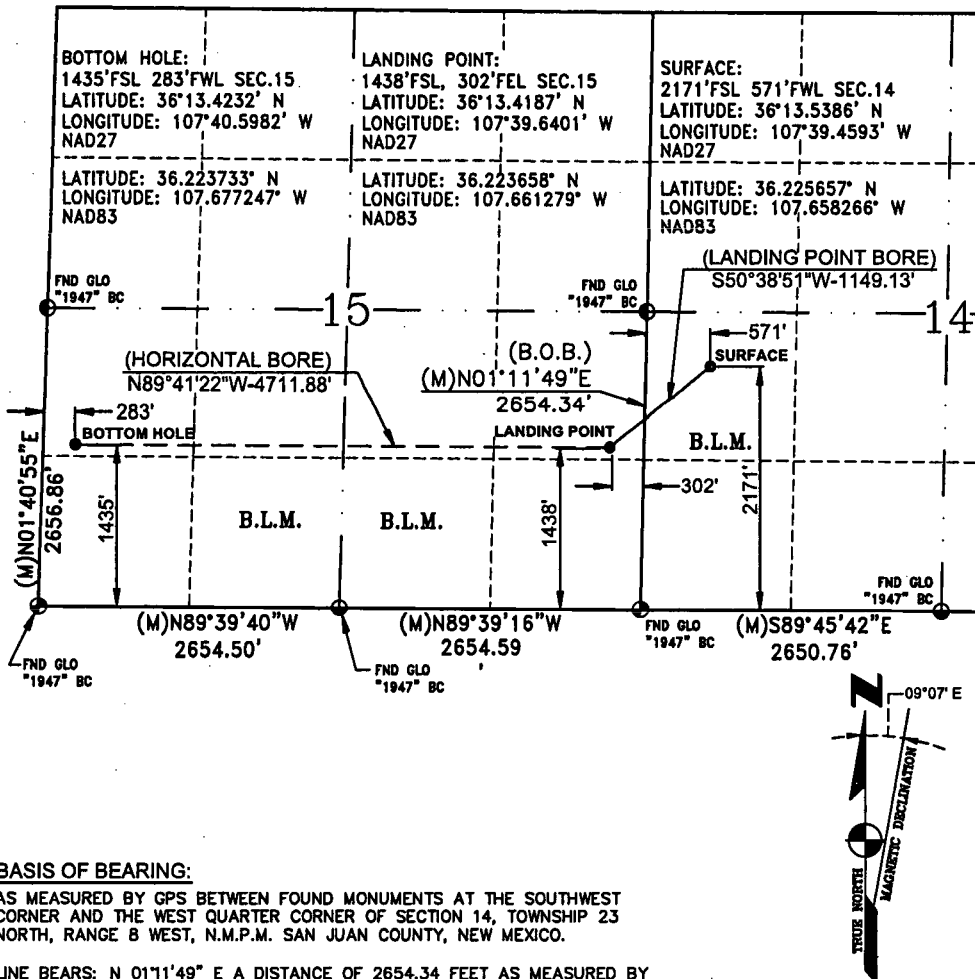
#### <sup>11</sup> Bottom Hole Location If Different From Surface

UL or lot no.	Section	Township	Range	Lot Idn	Feet from the	North/South line	Feet from the	East/West line	County
L	15	23-N	8-W		1435	SOUTH	283	WEST	SAN JUAN

<sup>12</sup> Dedicated Acres <b>320.00 ACRES = S/2 SEC. 15</b>	<sup>13</sup> Joint or Infill	<sup>14</sup> Consolidation Code	<sup>15</sup> Order No.
--	-------------------------------	----------------------------------	-------------------------

NO ALLOWABLE WILL BE ASSIGNED TO THIS COMPLETION UNTIL ALL INTERESTS HAVE BEEN CONSOLIDATED  
OR A NON-STANDARD UNIT HAS BEEN APPROVED BY THE DIVISION

16



#### <sup>17</sup> OPERATOR CERTIFICATION

I hereby certify that the information contained herein is true and complete to the best of my knowledge and belief, and that this organization either owns a working interest or unleased mineral interest in the land including the proposed bottom hole location or has a right to drill this well at this location pursuant to a contract with an owner of such a mineral or a working interest, or to a voluntary pooling agreement or a compulsory pooling order heretofore entered by the division.

Signature \_\_\_\_\_ Date \_\_\_\_\_

Printed Name \_\_\_\_\_

E-mail Address \_\_\_\_\_

#### <sup>18</sup> SURVEYOR CERTIFICATION

I hereby certify that the well location shown on this plat was plotted from field notes of actual surveys made by me or under my supervision, and that the same is true and correct to the best of my belief.

APRIL 11, 2018

Date of Survey

Signature and Seal of Professional Surveyor



GLEN W. RUSSELL

Certificate Number

15703

DISTRICT I  
1625 N. French Dr., Hobbs, N.M. 88240  
Phone: (575) 393-6161 Fax: (575) 393-0720

DISTRICT II  
811 S. First St., Artesia, N.M. 88210  
Phone: (575) 748-1283 Fax: (575) 748-8720

DISTRICT III  
1000 Rio Bravos Rd., Aztec, N.M. 87410  
Phone: (505) 334-8178 Fax: (505) 334-8170

DISTRICT IV  
1220 S. St. Francis Dr., Santa Fe, NM 87505  
Phone: (505) 478-3460 Fax: (505) 478-3462

State of New Mexico  
Energy, Minerals & Natural Resources Department

OIL CONSERVATION DIVISION  
1220 South St. Francis Dr.  
Santa Fe, NM 87505

Form C-102  
Revised August 1, 2011  
Submit one copy to appropriate  
District Office

☒ AMENDED REPORT  
AS-DRILLED PLAT

WELL LOCATION AND ACREAGE DEDICATION PLAT

<sup>1</sup> API Number <b>30-045-35633</b>	<sup>2</sup> Pool Code <b>97232</b>	<sup>3</sup> Pool Name <b>BASIN MANCOS</b>
<sup>4</sup> Property Code <b>320689</b>	<sup>5</sup> Property Name <b>ATHENA 2308 14L</b>	<sup>6</sup> Well Number <b>2H</b>
<sup>7</sup> OGRID No. <b>289408</b>	<sup>8</sup> Operator Name <b>LOGOS OPERATING, LLC</b>	<sup>9</sup> Elevation <b>6878'</b>

<sup>10</sup> Surface Location

UL or lot no.	Section	Township	Range	Lot Idn	Feet from the	North/South line	Feet from the	East/West line	County
L	14	23-N	8-W		2151	SOUTH	566	WEST	SAN JUAN

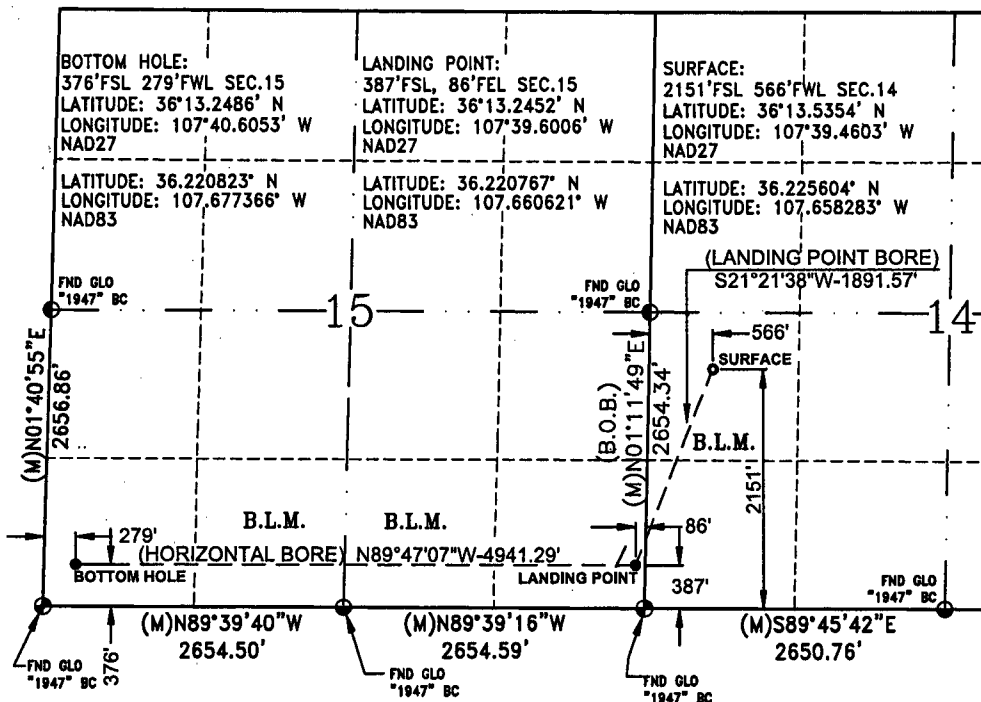
<sup>11</sup> Bottom Hole Location If Different From Surface

UL or lot no.	Section	Township	Range	Lot Idn	Feet from the	North/South line	Feet from the	East/West line	County
M	15	23-N	8-W		376	SOUTH	279	WEST	SAN JUAN

<sup>12</sup> Dedicated Acres <b>320.00 ACRES = S/2 SEC. 15</b>	<sup>13</sup> Joint or Infill	<sup>14</sup> Consolidation Code	<sup>15</sup> Order No.
--	-------------------------------	----------------------------------	-------------------------

NO ALLOWABLE WILL BE ASSIGNED TO THIS COMPLETION UNTIL ALL INTERESTS HAVE BEEN CONSOLIDATED  
OR A NON-STANDARD UNIT HAS BEEN APPROVED BY THE DIVISION

16



BASIS OF BEARING:

AS MEASURED BY GPS BETWEEN FOUND MONUMENTS AT THE SOUTHWEST  
CORNER AND THE WEST QUARTER CORNER OF SECTION 14, TOWNSHIP 23  
NORTH, RANGE 8 WEST, N.M.P.M. SAN JUAN COUNTY, NEW MEXICO.

LINE BEARS: N 01°11'49\" E A DISTANCE OF 2654.34 FEET AS MEASURED BY  
G.P.S. LOCAL GRID NAD83.

17 OPERATOR CERTIFICATION

I hereby certify that the information contained herein  
is true and complete to the best of my knowledge and  
belief, and that this organization either owns  
a working interest or unleased mineral interest in the  
land including the proposed bottom hole location or  
has a right to drill this well at this location pursuant  
to a contract with an owner of such a mineral or  
a working interest, or to a voluntary pooling agreement  
or a compulsory pooling order heretofore entered by the  
division.

Signature \_\_\_\_\_ Date \_\_\_\_\_  
Printed Name \_\_\_\_\_  
E-mail Address \_\_\_\_\_

18 SURVEYOR CERTIFICATION

I hereby certify that the well location shown on this plat  
was plotted from field notes of actual surveys made by  
me or under my supervision, and that the same is true  
and correct to the best of my belief.

APRIL 11, 2018  
Date of Survey

Signature and Seal of Professional Surveyor



GLEN W. RUSSELL  
Certificate Number

15703

DISTRICT I  
1825 N. French Dr., Hobbs, N.M. 88240  
Phone: (575) 393-6161 Fax: (575) 393-0720

DISTRICT II  
811 S. First St., Artesia, N.M. 88210  
Phone: (575) 748-1283 Fax: (575) 748-9720

DISTRICT III  
1000 Rio Bravos Rd., Aztec, N.M. 87410  
Phone: (505) 334-6178 Fax: (505) 334-6170

DISTRICT IV  
1220 S. St. Francis Dr., Santa Fe, NM 87505  
Phone: (505) 478-3480 Fax: (505) 478-3482

State of New Mexico  
Energy, Minerals & Natural Resources Department

OIL CONSERVATION DIVISION  
1220 South St. Francis Dr.  
Santa Fe, NM 87505

Form C-102  
Revised August 1, 2011  
Submit one copy to appropriate  
District Office

☐ AMENDED REPORT

WELL LOCATION AND ACREAGE DEDICATION PLAT

*API Number 30-045-35876	*Pool Code 97232	*Pool Name BASIN MANCOS
*Property Code 320689	*Property Name ATHENA 2308 14L	*Well Number 3H
*GRID No. 289408	*Operator Name LOGOS OPERATING, LLC	*Elevation 6878'

<sup>10</sup> Surface Location

UL or lot no.	Section	Township	Range	Lot Idn	Feet from the	North/South line	Feet from the	East/West line	County
L	14	23-N	8-W		2200	SOUTH	578	WEST	SAN JUAN

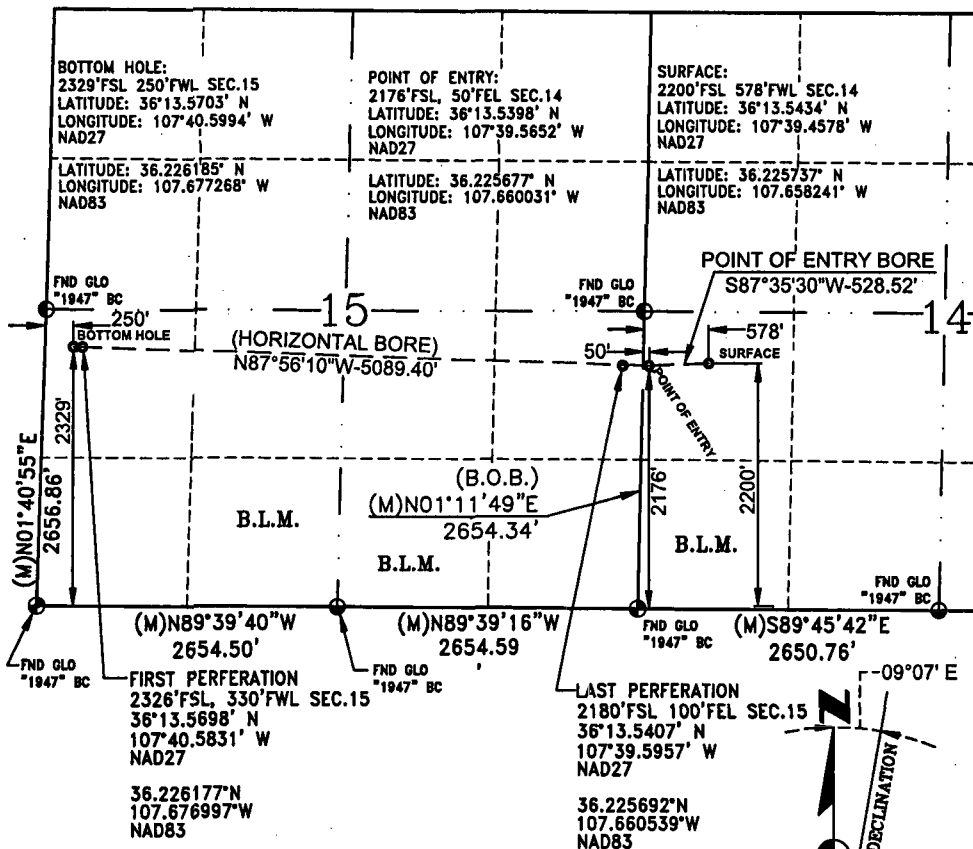
<sup>11</sup> Bottom Hole Location If Different From Surface

UL or lot no.	Section	Township	Range	Lot Idn	Feet from the	North/South line	Feet from the	East/West line	County
L	15	23-N	8-W		2329	SOUTH	250	WEST	SAN JUAN

<sup>12</sup> Dedicated Acres 320.00 ACRES = S/2 SEC. 15	<sup>13</sup> Joint or Infill	<sup>14</sup> Consolidation Code	<sup>15</sup> Order No.
--	-------------------------------	----------------------------------	-------------------------

NO ALLOWABLE WILL BE ASSIGNED TO THIS COMPLETION UNTIL ALL INTERESTS HAVE BEEN CONSOLIDATED  
OR A NON-STANDARD UNIT HAS BEEN APPROVED BY THE DIVISION

16



**BASIS OF BEARING:**

AS MEASURED BY GPS BETWEEN FOUND MONUMENTS AT THE SOUTHWEST  
CORNER AND THE WEST QUARTER CORNER OF SECTION 14, TOWNSHIP 23  
NORTH, RANGE 8 WEST, N.M.P.M. SAN JUAN COUNTY, NEW MEXICO.

LINE BEARS: N 01°11'49\"/>

**17 OPERATOR CERTIFICATION**

I hereby certify that the information contained herein  
is true and complete to the best of my knowledge and  
belief, and that this organization either owns  
a working interest or unleased mineral interest in the  
land including the proposed bottom hole location or  
has a right to drill this well at this location pursuant  
to a contract with an owner of such a mineral or  
a working interest, or to a voluntary pooling agreement  
or a compulsory pooling order heretofore entered by the  
division.

Signature \_\_\_\_\_ Date \_\_\_\_\_

Printed Name \_\_\_\_\_

E-mail Address \_\_\_\_\_

**18 SURVEYOR CERTIFICATION**

I hereby certify that the well location shown on this plat  
was plotted from field notes of actual surveys made by  
me or under my supervision, and that the same is true  
and correct to the best of my belief.

APRIL 26, 2018

Date of Survey

Signature and Seal of Professional Surveyor



GLEN W. RUSSELL

Certificate Number

15703