

UNITED STATES  
DEPARTMENT OF THE INTERIOR  
BUREAU OF LAND MANAGEMENT

RECEIVED

FORM APPROVED  
OMB No. 1004-0137  
Expires: January 31, 2018

SUNDRY NOTICES AND REPORTS ON WELLS

Do not use this form for proposals to drill or to re-enter an abandoned well. Use Form 3160-3 (APD) for such proposals.

SUBMIT IN TRIPLICATE - Other instructions on page 2

1. Type of Well

☒ Oil Well

☐ Gas Well

☐ Other

2. Name of Operator

Enduring Resources, LLC

3a. Address

332 Cr 3100 Aztec, NM 87410

3b. Phone No. (include area code)

505-636-9741

4. Location of Well (Footage, Sec., T., R., M., or Survey Description)

SHL: 290' FSL & 1613' FEL SEC 20 22N 6W

BHL: 2311' FSL & 922' FEL SEC 13 22N 7W

5. Lease Serial No.

NMNM-119281

6. If Indian, Allottee or Tribe Name

7. If Unit of CA/Agreement, Name and/or No.

8. Well Name and No.

S ESCAVADA UNIT #361H

9. API Well No.

30-043-21310

10. Field and Pool or Exploratory Area

S ESCAVADA UNIT

11. Country or Parish, State

Sandoval, NM

12. CHECK THE APPROPRIATE BOX(ES) TO INDICATE NATURE OF NOTICE, REPORT OR OTHER DATA

TYPE OF SUBMISSION

☒ Notice of Intent

☐ Subsequent Report

☐ Final Abandonment Notice

☐ Acidize

☐ Alter Casing

☐ Casing Repair

☐ Change Plans

☐ Convert to Injection

☐ Deepen

☐ Hydraulic Fracturing

☐ New Construction

☐ Plug and Abandon

☐ Plug Back

TYPE OF ACTION

☐ Production (Start/Resume)

☐ Reclamation

☐ Recomplete

☐ Temporarily Abandon

☐ Water Disposal

☐ Water Shut Off

☐ Well Integrity

☐ Other

S ESCAVADA

UNIT 361H

PAD STAGING

AREA

13. Describe Proposed or Completed Operation. Clearly state all pertinent details, including estimated starting date of any proposed work and approximate duration thereof. If the proposal is to deepen directionally or recompleat horizontally, give subsurface locations and measured and true vertical depths of all pertinent markers and zones. Attach the Bond under which the work will be performed or provide the Bond No. on file with BLM/BIA. Required subsequent reports must be filed within 30 days following completion of the involved operations. If the operation results in a multiple completion or recompleat in a new interval, a Form 3160-4 must be filed once testing has been completed. Final Abandonment Notices must be filed only after all requirements, including reclamation, have been completed and the operator has determined that the site is ready for final inspection.)

S ESKAVADA UNIT 361H PAD-

Enduring Resources IV, LLC is changing the well completion operation from a nitrogen to a slick water completion operation. This change in completion operations will allow for the use and reuse of nonpotable water and will significantly reduce the amount of flaring needed to clean a well up to pipeline quality.

Enduring would like to utilize the approved S Esvavada Unit 361H pad staging area as a Water Recycling Facility in order to achieve the goal of a slick water completion operation.

The facility will consist of a water supply well sourcing nonpotable water from the Entrada formation for oil and gas completion and recycling purposes which will be permitted with the Office of the State Engineer. This facility will supply water for Enduring Resources IV, LLC operations only and within the approved W Escavada, S Escavada and N Escavada Units. Surface water lines will be utilized within the already approved pipeline access road corridors to transfer the water to each location for completion activities. No new surface approvals are necessary for this request; Enduring will follow all existing stipulations and COA's.

A C102 of the approved S Escavada Unit 361H pad area is attached.

BLM'S APPROVAL OR ACCEPTANCE OF THIS ACTION DOES NOT RELIEVE THE LESSEE AND OPERATOR FROM OBTAINING ANY OTHER AUTHORIZATION REQUIRED FOR OPERATIONS ON FEDERAL AND INDIAN LANDS

14. I hereby certify that the foregoing is true and correct. Name (Printed/Typed)

Andrea Felix

Title Regulatory Manager

Signature

Date 7/10/18

THE SPACE FOR FEDERAL OR STATE OFFICE USE

Approved by

Title RE

Date 7/12/18

Conditions of approval, if any, are attached. Approval of this notice does not warrant or certify that the applicant holds legal or equitable title to those rights in the subject lease which would entitle the applicant to conduct operations thereon.

Office FFO

Title 18 U.S.C Section 1001 and Title 43 U.S.C Section 1212, make it a crime for any person knowingly and willfully to make to any department or agency of the United States any false, fictitious or fraudulent statements or representations as to any matter within its jurisdiction.

NMOCD

JUL 18 2018

DISTRICT III

District I  
1625 N. French Drive, Hobbs, NM 88240  
Phone: (575) 393-6161 Fax: (575) 393-0720

District II  
811 S. First Street, Artesia, NM 88210  
Phone: (575) 748-1283 Fax: (575) 748-9720

District III  
1000 Rio Brazos Road, Aztec, NM 87410  
Phone: (505) 334-6178 Fax: (505) 334-6170

District IV  
1220 S. St. Francis Drive, Santa Fe, NM 87505  
Phone: (505) 476-3460 Fax: (505) 476-3462

State of New Mexico  
Energy, Minerals & Natural Resources Department

Form C-102  
Revised August 1, 2011

Submit one copy to  
Appropriate District Office

OIL CONSERVATION DIVISION  
1220 South St. Francis Drive  
Santa Fe, NM 87505

☐ AMENDED REPORT

WELL LOCATION AND ACREAGE DEDICATION PLAT

|                             |   |                     |                                     |
|-----------------------------|---|---------------------|-------------------------------------|
| *API Number<br>30-043-21310 |   | *Pool Code<br>52860 | *Pool Name<br>RUSTY GALLUP OIL POOL |
| *Property Code<br>322151    | *Property Name<br>S ESCAVADA UNIT         |                     | *Well Number<br>361H                |
| *OGRID No.<br>372286        | *Operator Name<br>ENDURING RESOURCES, LLC |                     | *Elevation<br>7051'                 |

<sup>10</sup> Surface Location

| U. or lot no. | Section | Township | Range | Lot 10 | Feet from the | North/South line | Feet from the | East/West line | County   |
|---------------|---------|----------|-------|--------|---------------|------------------|---------------|----------------|----------|
| 0             | 20      | 22N      | 6W    |        | 290           | SOUTH            | 1613          | EAST           | SANDOVAL |

<sup>11</sup> Bottom Hole Location If Different From Surface

| U. or lot no. | Section | Township | Range | Lot 10 | Feet from the | North/South line | Feet from the | East/West line | County   |
|---------------|---------|----------|-------|--------|---------------|------------------|---------------|----------------|----------|
| I             | 13      | 22N      | 7W    |        | 2311          | SOUTH            | 922           | EAST           | SANDOVAL |

Dedication Acres  
441.26  
NE/4 SE/4 - Section 13  
W/2 SW/4, SE/4 SW/4 - Section 18  
NE/4 NW/4, W/2 NE/4  
SE/4 NE/4, NE/4 SE/4 - Section 19  
W/2 SW/4 - Section 20

\*Joint or Initial  
\*Consolidation Code  
\*Order No.  
R-14347

NO ALLOWABLE WILL BE ASSIGNED TO THIS  
COMPLETION UNTIL ALL INTERESTS HAVE  
BEEN CONSOLIDATED OR A NON-STANDARD  
UNIT HAS BEEN APPROVED BY THE DIVISION

<sup>17</sup> OPERATOR CERTIFICATION  
I hereby certify that the information contained  
herein is true and complete to the best of my  
knowledge and belief, and that this organization  
either owns a working interest or an undivided  
mineral interest in the land including the  
proposed bottom-hole location or has a right  
to drill this well at this location pursuant  
to a contract with an owner of such a mineral  
or working interest or to a voluntary pooling  
agreement or a compulsory pooling order  
heretofore entered by the division

7/10/18  
Signature  
Date  
Andres Felix  
Printed Name  
afelix@enduringresources.com  
E-mail Address

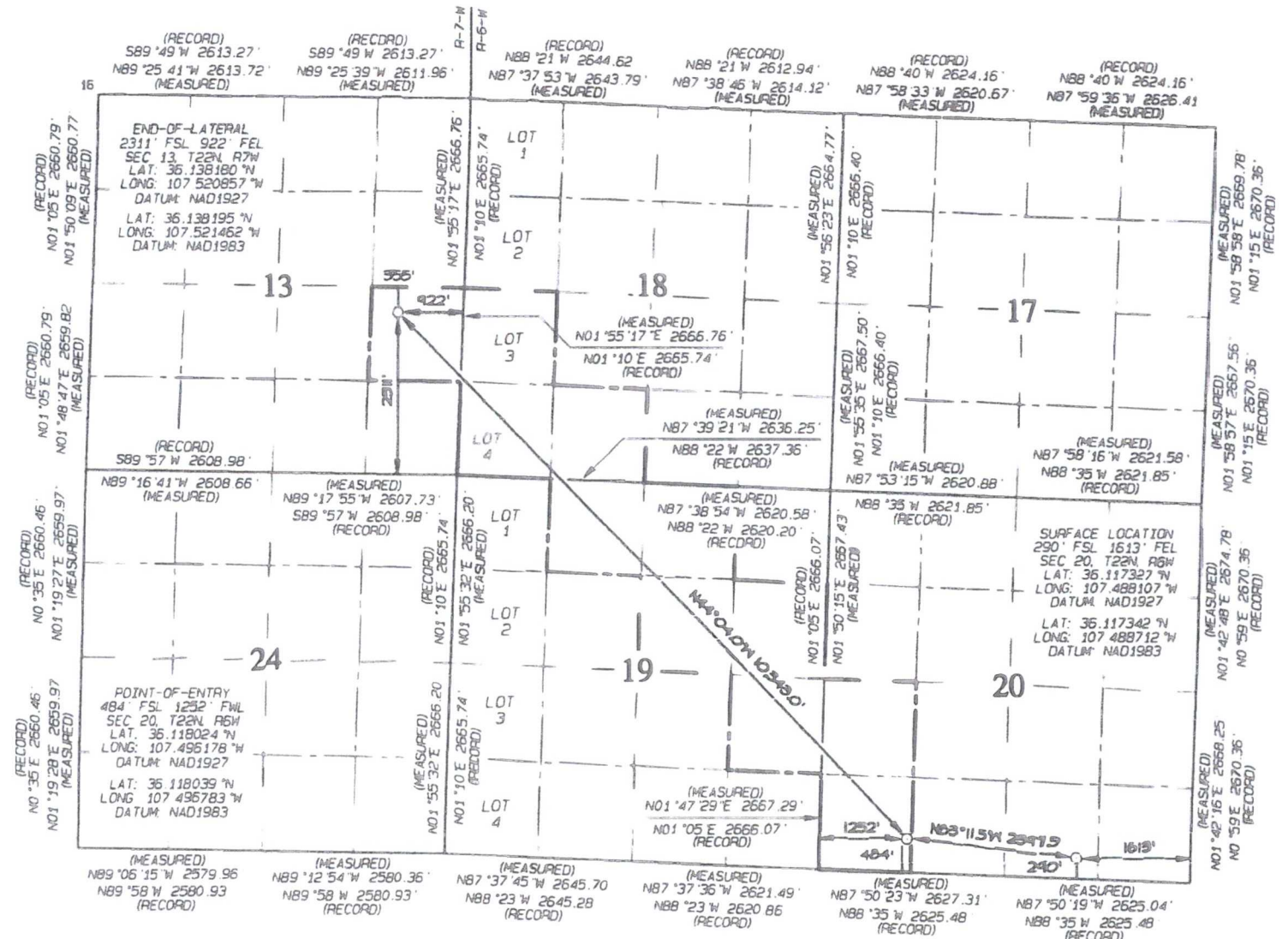
<sup>18</sup> SURVEYOR CERTIFICATION  
I hereby certify that the well location  
shown on this plat was plotted from field  
notes of actual surveys made by me or under  
my supervision and that the same is true  
and correct to the best of my belief.

Date Revised: SEPTEMBER 14, 2017  
Date of Survey: MARCH 1, 2017

Signature and Seal of Professional Surveyor



JASON C. EDWARDS  
Certificate Number 15269



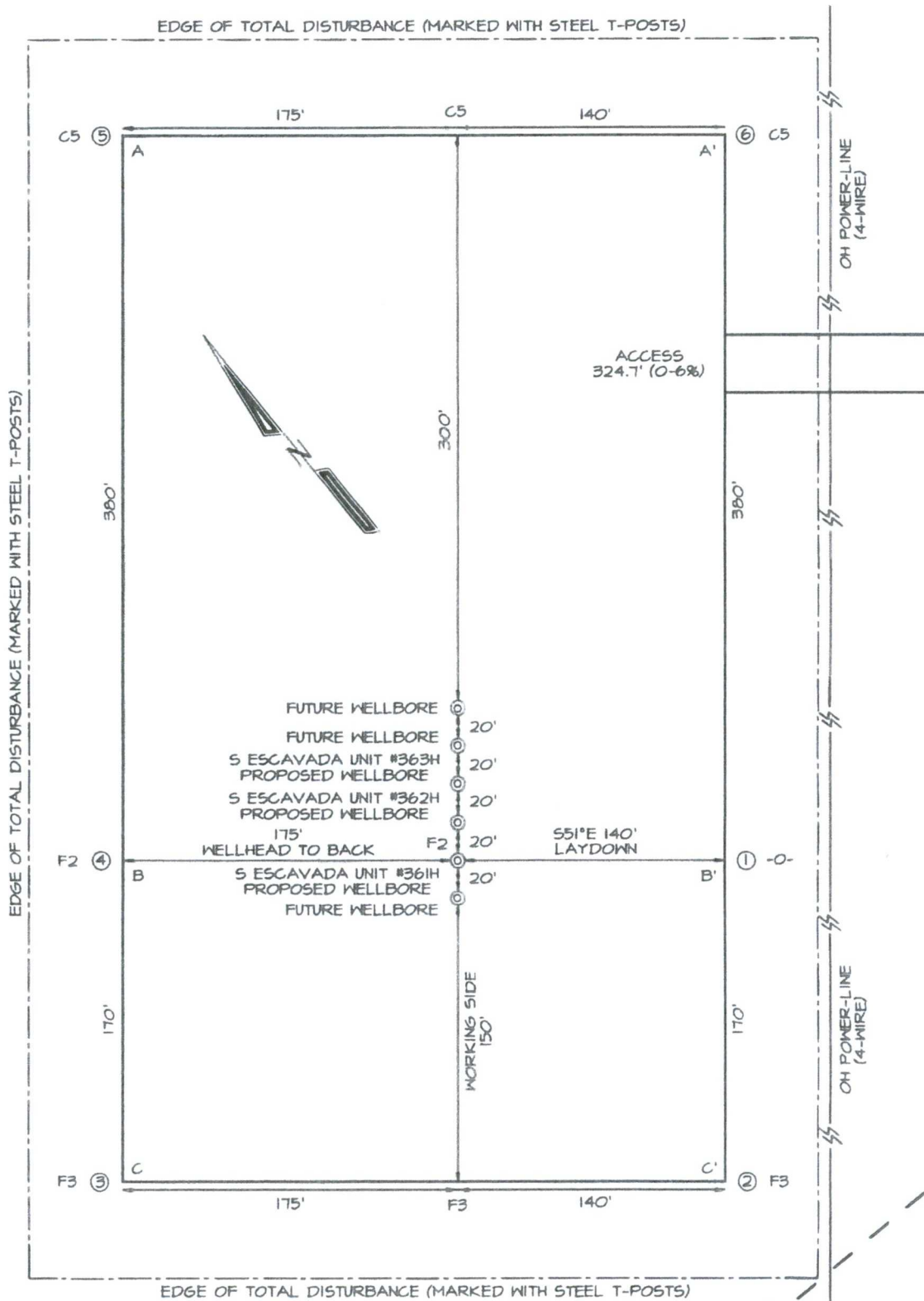
~ SURFACE OWNER ~  
Bureau of Land Management

GRAPHIC SCALE 1"=80'



0 80 160

**Area of Total Disturbance  
650' X 415' = 6.19 Acres**



~ SECTION LINE ~  
OWNERSHIP  
CHANGE

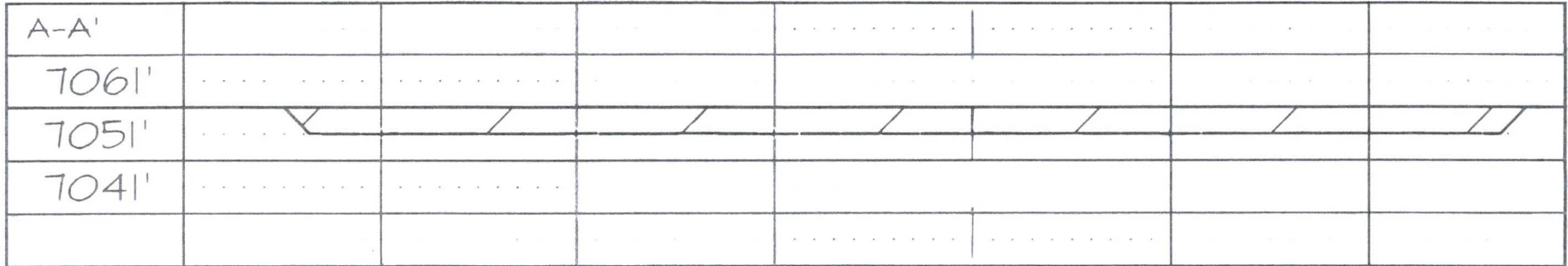
T-F ( ) to define Edge of Disturbance limits which 2 'offset from edge of wellpad.

**ENDURING RESOURCES LLC S ESCAVADA UNIT #361H**  
**290' FSL & 1613' FEL, SECTION 20, T22N, R6W, NMMPM**  
**SANDOVAL COUNTY, NEW MEXICO ELEVATION: 7051'**

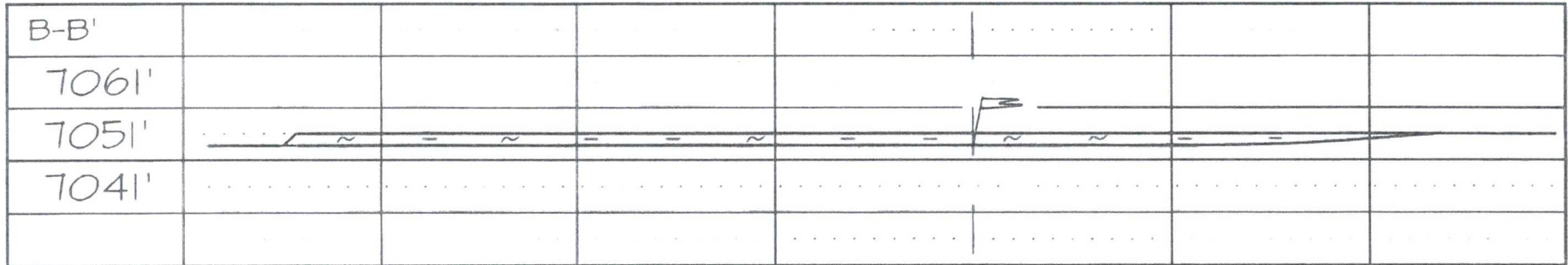
HORIZONTAL SCALE  
 1"=40'

VERTICAL SCALE  
 1"=30'

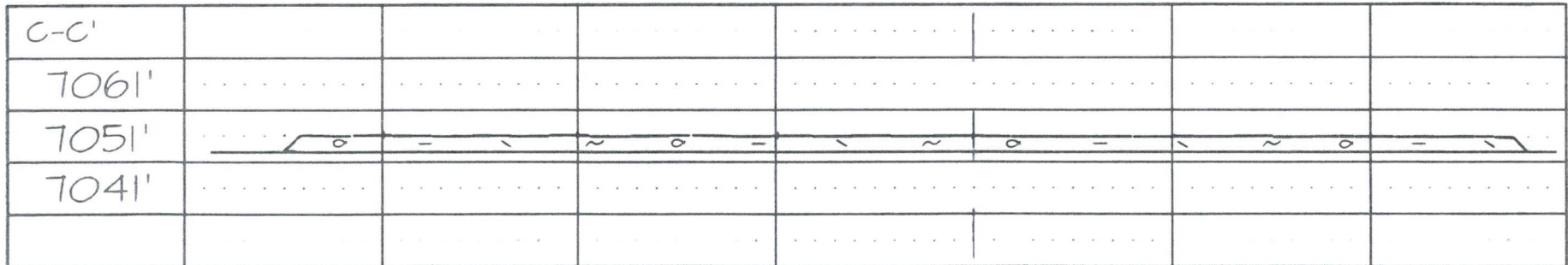
C/L



C/L



C/L



NCE SURVEYS IS NOT LIABLE FOR LOCATION OF UNDERGROUND UTILITIES OR PIPELINES.

CONTRACTOR SHOULD CONTACT ONE-CALL FOR LOCATION OF ANY MARKED OR UNMARKED UNDERGROUND UTILITIES OR PIPELINES ON WELLPAD AND/OR ACCESS ROAD AT LEAST TWO WORKING DAYS PRIOR TO CONSTRUCTION.