

UNITED STATES
DEPARTMENT OF THE INTERIOR
BUREAU OF LAND MANAGEMENT

RECEIVED

JUL 19 2018

FORM APPROVED
OMB No. 1004-0137
Expires: July 31, 2010

SUNDRY NOTICES AND REPORTS ON WELLS
*Do not use this form for proposals to drill or to re-enter an
abandoned well. Use Form 3160-3 (APD) for such proposals.*

SUBMIT IN TRIPLICATE - Other instructions on page 2.

1. Type of Well

☐ Oil Well

☒ Gas Well

☐ Other

2. Name of Operator

Hilcorp Energy Company

3a. Address

382 Road 3100 Aztec, NM 87410

3b. Phone No. (include area code)

505-599-3400

4. Location of Well (Footage, Sec., T., R., M., or Survey Description)

Surface Unit I (NESE) 1591' FSL & 776' FEL, Sec. 9, T32N, R07W
Bottomhole (Lat 1) Unit E (SWNW) 677' FNL & 663 FWL, Sec. 11, T32N, R07W
Bottomhole (Lat 2) Unit L (NWSW) 2711' FSL & 1328' FWL, Sec. 11, T32N, R07W

5. Lease Serial No.

SF-078459-B

6. If Indian, Allottee or Tribe Name

7. If Unit of CA/Agreement, Name and/or No.

Allison Unit

8. Well Name and No.

Allison Unit 123H

9. API Well No.

30-045-35611

10. Field and Pool or Exploratory Area

Basin Fruitland Coal

11. Country or Parish, State

San Juan, New Mexico

12. CHECK THE APPROPRIATE BOX(ES) TO INDICATE NATURE OF NOTICE, REPORT OR OTHER DATA

TYPE OF SUBMISSION

TYPE OF ACTION

☐ Notice of Intent

☒ Subsequent Report

☐ Final Abandonment Notice

☐ Acidize

☐ Alter Casing

☐ Casing Repair

☐ Change Plans

☐ Convert to Injection

☐ Deepen

☐ Fracture Treat

☐ New Construction

☐ Plug and Abandon

☐ Plug Back

☐ Production (Start/Resume)

☐ Reclamation

☐ Recomplete

☐ Temporarily Abandon

☐ Water Disposal

☐ Water Shut-Off

☐ Well Integrity

☒ Other Amended

As Drilled Plats

13. Describe Proposed or Completed Operation: Clearly state all pertinent details, including estimated starting date of any proposed work and approximate duration thereof.

If the proposal is to deepen directionally or recompleat horizontally, give subsurface locations and measured and true vertical depths of all pertinent markers and zones. Attach the bond under which the work will be performed or provide the Bond No. on file with BLM/BIA. Required subsequent reports must be filed within 30 days following completion of the involved operations. If the operation results in a multiple completion or recompleat in a new interval, a Form 3160-4 must be filed once Testing has been completed. Final Abandonment Notices must be filed only after all requirements, including reclamation, have been completed and the operator has determined that the site is ready for final inspection.)

Hilcorp Energy Company is submitting an amended As Drill Plats per the approved NSP for the subject well.

NMOC

JUL 25 2018

DISTRICT III

14. I hereby certify that the foregoing is true and correct. Name (Printed/Typed)

Priscilla Shorty

Title Operations/Regulatory Technician - Sr.

Signature

Date 7/16/2018

THIS SPACE FOR FEDERAL OR STATE OFFICE USE

Approved by

Title

Office

ACCEPTED FOR RECORD

JUL 20 2018

Date

FARMINGTON FIELD OFFICE

Conditions of approval, if any, are attached. Approval of this notice does not warrant or certify that the applicant holds legal or equitable title to those rights in the subject lease which would entitle the applicant to conduct operations thereon.

Title 18 U.S.C. Section 1001 and Title 43 U.S.C. Section 1212, make it a crime for any person knowingly and willfully to make to any department or agency of the United States any false, fictitious or fraudulent statements or representations as to any matter within its jurisdiction.

NMOC

ACCEPTED FOR RECORD

DISTRICT I
1625 N. French Dr., Hobbs, N.M. 88240
Phone: (575) 393-6161 Fax: (575) 393-0720
DISTRICT II
811 S. First St., Artesia, N.M. 88210
Phone: (575) 748-1283 Fax: (575) 748-9720
DISTRICT III
1000 Rio Brazos Rd., Aztec, N.M. 87410
Phone: (505) 334-6178 Fax: (505) 334-6170
DISTRICT IV
1220 S. St. Francis Dr., Santa Fe, NM 87505
Phone: (505) 476-3480 Fax: (505) 476-3462

State of New Mexico
Energy, Minerals & Natural Resources Department

OIL CONSERVATION DIVISION
1220 South St. Francis Dr.
Santa Fe, NM 87505

Form C-102
Revised August 1, 2011
Submit one copy to appropriate
District Office

AS DRILLED PLAT

☒ AMENDED REPORT

WELL LOCATION AND ACREAGE DEDICATION PLAT

¹ API Number 30-045-35611	² Pool Code 71629	³ Pool Name BASIN FRUITLAND COAL LATERAL#1
⁴ Property Code 318864	⁵ Property Name ALLISON UNIT	⁶ Well Number 123H
⁷ OGRID No. 372171	⁸ Operator Name HILCORP ENERGY COMPANY	⁹ Elevation 6629'

¹⁰ Surface Location

UL or lot no. I	Section 9	Township 32-N	Range 7-W	Lot Idn 10	Feet from the 1591	North/South line SOUTH	Feet from the 776	East/West line EAST	County SAN JUAN
--------------------	--------------	------------------	--------------	---------------	-----------------------	---------------------------	----------------------	------------------------	--------------------

¹¹ Bottom Hole Location If Different From Surface

UL or lot no. E	Section 11	Township 32-N	Range 7-W	Lot Idn 4	Feet from the 677	North/South line NORTH	Feet from the 663	East/West line WEST	County SAN JUAN
--------------------	---------------	------------------	--------------	--------------	----------------------	---------------------------	----------------------	------------------------	--------------------

¹² Dedicated Acres FC = 652.7 ACRES	¹³ Joint or Infill	¹⁴ Consolidation Code	¹⁵ Order No. NSP-2108
---	-------------------------------	----------------------------------	-------------------------------------

NO ALLOWABLE WILL BE ASSIGNED TO THIS COMPLETION UNTIL ALL INTERESTS HAVE BEEN CONSOLIDATED
OR A NON-STANDARD UNIT HAS BEEN APPROVED BY THE DIVISION

17 OPERATOR CERTIFICATION

I hereby certify that the information contained herein is true and complete to the best of my knowledge and belief, and that this organization either owns a working interest or unleased mineral interest in the land including the proposed bottom hole location or has a right to drill this well at this location pursuant to a contract with an owner of such a mineral or a working interest, or to a voluntary pooling agreement or a compulsory pooling order heretofore entered by the division.

Priscilla Shorty 7/13/18
Signature Date

Priscilla Shorty

Printed Name

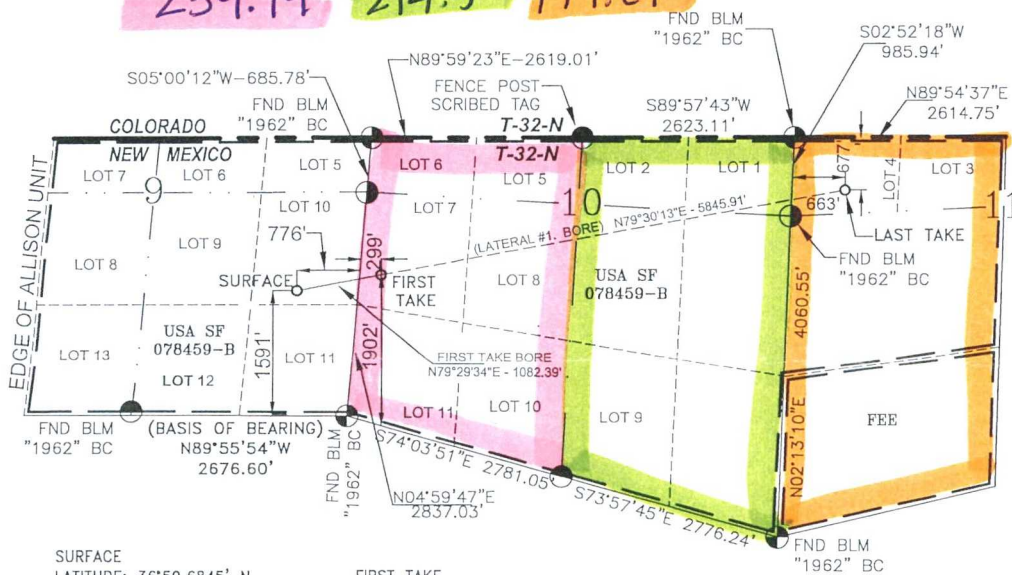
pshorty@hilcorp.com

E-mail Address

18 SURVEYOR CERTIFICATION

I hereby certify that the well location shown on this plat was plotted from field notes of actual surveys made by me or under my supervision, and that the same is true and correct to the best of my belief.

See original C-102 for
certification



SURFACE
LATITUDE: 36°59.6845' N
LONGITUDE: 107°33.9043' W
NAD27

LATITUDE: 36.994746° N
LONGITUDE: 107.565681° W
NAD83

FIRST TAKE
1902' FSL 299' FWL SEC. 10
LATITUDE: 36.995266 N
LONGITUDE 107.561277 W
NAD27

LATITUDE: 36.995271 N
LONGITUDE: 107.561886 W
NAD83

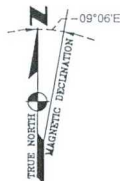
LAST TAKE
677' FNL 663' FWL SEC. 11
LATITUDE: 36.998259 N
LONGITUDE: 107.5417448 W
NAD27

LATITUDE: 36.998264 N
LONGITUDE: 107.542353 W
NAD83

BASIS OF BEARING:

BETWEEN FOUND MONUMENTS AT THE SOUTHEAST CORNER AND THE SOUTH
QUARTER CORNER OF SECTION 9, TOWNSHIP 32 NORTH, RANGE 7 WEST,
N.M.P.M. SAN JUAN COUNTY, NEW MEXICO.

LINE BEARS: N 89°55'54\" W A DISTANCE OF 2676.60 FEET AS MEASURED BY
G.P.S. LOCAL GRID NAD83.



DISTRICT I
1625 N. French Dr., Hobbs, N.M. 88240
Phone: (575) 393-6161 Fax: (575) 393-0720

DISTRICT II
611 S. First St., Artesia, N.M. 88210
Phone: (575) 748-1283 Fax: (575) 748-9720

DISTRICT III
1000 Rio Brazos Rd., Aztec, N.M. 87410
Phone: (505) 334-6178 Fax: (505) 334-6170

DISTRICT IV
1220 S. St. Francis Dr., Santa Fe, NM 87505
Phone: (505) 476-3460 Fax: (505) 476-3462

State of New Mexico
Energy, Minerals & Natural Resources Department

OIL CONSERVATION DIVISION
1220 South St. Francis Dr.
Santa Fe, NM 87505

Form C-102
Revised August 1, 2011
Submit one copy to appropriate
District Office

AS DRILLED PLAT

☒ AMENDED REPORT

WELL LOCATION AND ACREAGE DEDICATION PLAT

¹ API Number 30-045-35611	² Pool Code 71629	³ Pool Name BASIN FRUITLAND COAL LATERAL#2
⁴ Property Code 318864	⁵ Property Name ALLISON UNIT	⁶ Well Number 123H
⁷ OGRID No. 372171	⁸ Operator Name HILCORP ENERGY COMPANY	⁹ Elevation 6629'

¹⁰ Surface Location

UL or lot no.	Section	Township	Range	Lot Idn	Feet from the	North/South line	Feet from the	East/West line	County
I	9	32-N	7-W	10	1591	SOUTH	776	EAST	SAN JUAN

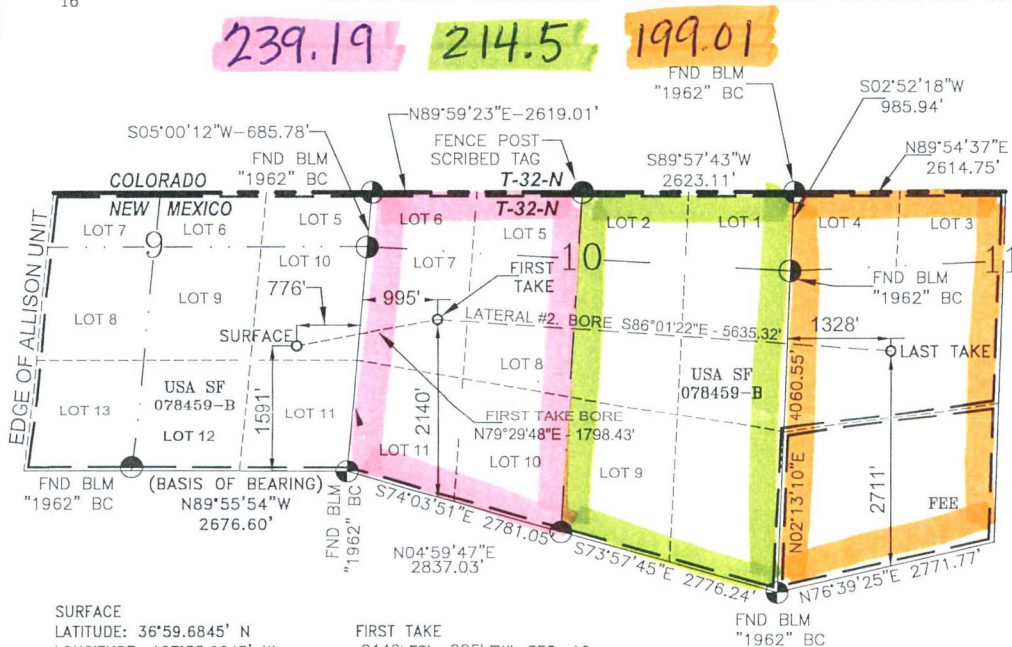
¹¹ Bottom Hole Location If Different From Surface

UL or lot no.	Section	Township	Range	Lot Idn	Feet from the	North/South line	Feet from the	East/West line	County
L	11	32-N	7-W		2711'	SOUTH	1328'	WEST	SAN JUAN

¹² Dedicated Acres FC = 652.7 ACRES	¹³ Joint or Infill	¹⁴ Consolidation Code	¹⁵ Order No. NVP-2108
---	-------------------------------	----------------------------------	-------------------------------------

NO ALLOWABLE WILL BE ASSIGNED TO THIS COMPLETION UNTIL ALL INTERESTS HAVE BEEN CONSOLIDATED
OR A NON-STANDARD UNIT HAS BEEN APPROVED BY THE DIVISION

16



SURFACE
LATITUDE: 36°59.6845' N
LONGITUDE: 107°33.9043' W
NAD27

LATITUDE: 36.994746° N
LONGITUDE: 107.565681° W
NAD83

FIRST TAKE
2140' FSL 995' FWL SEC. 10
LATITUDE: 36.9953620 N
LONGITUDE: 107.5589156 W
NAD27

LATITUDE: 36.995366 N
LONGITUDE: 107.559524 W
NAD83

LAST TAKE
2711' FSL 1328' FWL SEC. 11
LATITUDE: 36.9946083 N
LONGITUDE: 107.5396563 W
NAD27

LATITUDE: 36.994613 N
LONGITUDE: 107.540264 W
NAD83



BASIS OF BEARING:

BETWEEN FOUND MONUMENTS AT THE SOUTHEAST CORNER AND THE SOUTH
QUARTER CORNER OF SECTION 9, TOWNSHIP 32 NORTH, RANGE 7 WEST,
N.M.P.M. SAN JUAN COUNTY, NEW MEXICO.

LINE BEARS: N 89°55'54" W A DISTANCE OF 2676.60 FEET AS MEASURED BY
G.P.S. LOCAL GRID NAD83.

¹⁷ OPERATOR CERTIFICATION

I hereby certify that the information contained herein
is true and complete to the best of my knowledge and
belief, and that this organization either owns
a working interest or unleased mineral interest in the
land including the proposed bottom hole location or
has a right to drill this well at this location pursuant
to a contract with an owner of such a mineral or
a working interest, or to a voluntary pooling agreement
or a compulsory pooling order heretofore entered by the
division.

Priscilla Shorty 7/13/18
Signature Date
Priscilla Shorty
Printed Name
pshorty@hilcorp.com
E-mail Address

¹⁸ SURVEYOR CERTIFICATION

I hereby certify that the well location shown on this plat
was plotted from field notes of actual surveys made by
me or under my supervision, and that the same is true
and correct to the best of my belief.

See original C-102 for
certification