

State of New Mexico
Energy, Minerals and Natural Resources Department

Susana Martinez
Governor

Ken McQueen
Cabinet Secretary

Matthias Sayer
Deputy Cabinet Secretary

Heather Riley, Division Director
Oil Conservation Division



New Mexico Oil Conservation Division approval and conditions listed below are made in accordance with OCD Rule 19.15.7.11 and are in addition to the actions approved by BLM on the following 3160-4 or 3160-5 form.

Operator Signature Date: 7/18/2018

Well information:

API WELL #	Well Name	Well #	Operator Name	Type	Stat	County	Surf_Owner	UL	Sec	Twp	N/S	Rng	W/E
30-045-07275-00-00	GALLEGOS CANYON UNIT	198	BP AMERICA PRODUCTION COMPANY	G	A	San Juan	N	N	20	28	N	12	W

Application Type:

☒ P&A ☐ Drilling/Casing Change ☐ Location Change

☐ Recomplete/DHC (For hydraulic fracturing operations review EPA Underground injection control Guidance #84; Submit Gas Capture Plan form prior to spudding or initiating recompletion operations)

☐ Other:

Conditions of Approval:

- Notify NMOCD 24hrs prior to beginning operations.
- Add Chacra plug 2275'-2175'.

NMOCD Approved by Signature

8/27/18
Date

UNITED STATES
DEPARTMENT OF THE INTERIOR
BUREAU OF LAND MANAGEMENTFORM APPROVED
OMB NO. 1004-0137
Expires: January 31, 2018**SUNDRY NOTICES AND REPORTS ON WELLS***Do not use this form for proposals to drill or to re-enter an abandoned well. Use form 3160-3 (APD) for such proposals.*5. Lease Serial No.
1149IND84766. If Indian, Allottee or Tribe Name
EASTERN NAVAJO7. If Unit or CA/Agreement, Name and/or No.
892000844F8. Well Name and No.
GALLEGOS CANYON UNIT 1989. API Well No.
30-045-07275-00-S110. Field and Pool or Exploratory Area
BASIN DAKOTA11. County or Parish, State
SAN JUAN COUNTY, NM**SUBMIT IN TRIPLICATE - Other instructions on page 2**

1. Type of Well

☐ Oil Well ☒ Gas Well ☐ Other2. Name of Operator
BP AMERICA PRODUCTION COContact: TOYA COLVIN
E-Mail: Toya.Colvin@bp.com3a. Address
380 AIRPORT RD
DURANGO, CO 813033b. Phone No. (include area code)
Ph: 281.366.7148

4. Location of Well (Footage, Sec., T., R., M., or Survey Description)

Sec 20 T28N R12W SESW 1010FSL 2090FWL
36.643280 N Lat, 108.136310 W Lon**12. CHECK THE APPROPRIATE BOX(ES) TO INDICATE NATURE OF NOTICE, REPORT, OR OTHER DATA**

TYPE OF SUBMISSION	TYPE OF ACTION			
<input checked="" type="checkbox"/> Notice of Intent	<input type="checkbox"/> Acidize	<input type="checkbox"/> Deepen	<input type="checkbox"/> Production (Start/Resume)	<input type="checkbox"/> Water Shut-Off
<input type="checkbox"/> Subsequent Report	<input type="checkbox"/> Alter Casing	<input type="checkbox"/> Hydraulic Fracturing	<input type="checkbox"/> Reclamation	<input type="checkbox"/> Well Integrity
<input type="checkbox"/> Final Abandonment Notice	<input type="checkbox"/> Casing Repair	<input type="checkbox"/> New Construction	<input type="checkbox"/> Recomplete	<input type="checkbox"/> Other
	<input type="checkbox"/> Change Plans	<input checked="" type="checkbox"/> Plug and Abandon	<input type="checkbox"/> Temporarily Abandon	
	<input type="checkbox"/> Convert to Injection	<input type="checkbox"/> Plug Back	<input type="checkbox"/> Water Disposal	

13. Describe Proposed or Completed Operation: Clearly state all pertinent details, including estimated starting date of any proposed work and approximate duration thereof. If the proposal is to deepen directionally or recompleat horizontally, give subsurface locations and measured and true vertical depths of all pertinent markers and zones. Attach the Bond under which the work will be performed or provide the Bond No. on file with BLM/BIA. Required subsequent reports must be filed within 30 days following completion of the involved operations. If the operation results in a multiple completion or recompleat in a new interval, a Form 3160-4 must be filed once testing has been completed. Final Abandonment Notices must be filed only after all requirements, including reclamation, have been completed and the operator has determined that the site is ready for final inspection.

BP requests to P&A the subject well. Please see the attached P&A procedure including wellbore diagram and the required reclamation plan documents.

In accordance to NMOCD Pit Rule 19.15.17.9 NMAC, BP will use a closed-loop system during operations.

Eastern Navajo
NMNM78391CNMOCD
JUL 23 2018
DISTRICT III

14. I hereby certify that the foregoing is true and correct.

**Electronic Submission #407776 verified by the BLM Well Information System
For BP AMERICA PRODUCTION CO, sent to the Farmington
Committed to AFMSS for processing by JACK SAVAGE on 07/18/2018 (18JWS0138SE)**

Name (Printed/Typed) TOYA COLVIN

Title REGULATORY ANALYST

Signature (Electronic Submission)

Date 03/14/2018

THIS SPACE FOR FEDERAL OR STATE OFFICE USE

Approved By JACK SAVAGE

Title PETROLEUM ENGINEER

Date 07/18/2018

Conditions of approval, if any, are attached. Approval of this notice does not warrant or certify that the applicant holds legal or equitable title to those rights in the subject lease which would entitle the applicant to conduct operations thereon.

Office Farmington

Title 18 U.S.C. Section 1001 and Title 43 U.S.C. Section 1212, make it a crime for any person knowingly and willfully to make to any department or agency of the United States any false, fictitious or fraudulent statements or representations as to any matter within its jurisdiction.

(Instructions on page 2)

**** BLM REVISED ** BLM REVISED ** BLM REVISED ** BLM REVISED ** BLM REVISED ****NMOCD
bl
N

BP America

Plug And Abandonment Procedure

GCU 198

1010' FSL & 2090' FWL, Section 20, T28N, R12W

San Juan County, NM / API 30-045-07275

1. Hold pre-job safety meeting. Comply with all NMOCD, BLM safety and environmental regulations. Test rig anchors prior to moving in rig if not rigged to base beam.
2. Check casing, tubing, and bradenhead pressures.
3. Remove existing piping on casing valve. RU blow lines from casing valves and begin blowing down casing pressure. Kill well as necessary. Ensure well is dead or on a vacuum.
4. ND wellhead and NU BOP. Function test BOP.
5. P/U 4 1/2" bit or casing scraper on 2-3/8" work string and round trip as deep as possible above top perforation at 5884'.
6. P/U 4 1/2" CR, TIH and set CR at +/- 5834'. Pressure test tubing to 1000 psi. Sting out of CR. Load hole, and pressure test casing to 800 psi. If casing does not test, then spot or tag subsequent plugs as appropriate. POOH w/ tubing.
7. RU wireline and run CBL with 500 psi on casing from CR at 5834' to surface to identify TOC. Adjust plugs as necessary for new TOC. Email log copy to

Jack Savage (BLM) at jwsavage@blm.gov and Brandon Powell at Brandon.powell@state.nm.us upon completions of logging operations.

8. Rig up to pump cement down tubing. Pump water to establish rate down tubing.

NOTE: All Plugs Include 100% excess outside casing and 50% Excess inside casing

9. Plug 1 (**Dakota Perforations and Dakota Formation Top 5834'-5784', 6 Sacks Class B Cement**)

Mix 6 sx Class B cement and spot a balanced plug inside casing to cover Dakota perforations and formation top.

10. Plug 2 (**Gallup Formation Top 5005'-4855', 12 Sacks Class B Cement**)

Mix 12 sx Class B cement and spot a balanced plug inside casing to cover Gallup formation top.

11. Plug 3 (**Mancos Formation Top 4095'-3945', 12 Sacks Class B Cement**)

Mix 12 sx Class B cement and spot a balanced plug inside casing to cover Mancos formation top.

12. Plug 4 (**Mesa Verde and Chacra Formation Tops 3115'-2700', 35 Sacks Class B Cement**)

Mix 35 sx Class B cement and spot a balanced plug inside casing to cover Mesa Verde and Chacra formation tops.

13. Plug 5 (**Pictured Cliffs Formation Top 1343'-1193', 12 Sacks Class B Cement**)

Mix 12 sx Class B cement and spot a balanced plug inside casing to cover Pictured Cliffs formation top.

14. Plug 6 (**Surface Shoe and Surface 371'-surface, 120 Sacks Class B Cement**)

Attempt to pressure test the bradenhead annulus to 300 psi; note the volume to load. If BH annulus holds pressure, then establish circulation out casing valve with water. Mix approximately 120 sx cement and spot a balanced plug from 371' to surface, circulate good cement out of casing valve. TOH and LD tubing. Shut well in and WOC. If BH annulus does not test, then perforate at the appropriate depth and attempt to circulate cement to surface filling the casing from 371' and the annulus from the squeeze holes to surface. Shut in well and WOC.

15. ND cementing valves and cut off wellhead. Fill annuli with cement as necessary. Install P&A marker to comply with regulations. Record GPS coordinate for P&A marker on tower report. Photograph P&A marker in place. RD, MOL and restore location per BLM stipulations.

Wellbore Diagram

Gallegos Canyon Unit 198

API #: 3004507275

San Juan, New Mexico

Plug 6 ✓

371 feet - Surface

371 feet plug

120 sacks of Class B Cement

Plug 5 ✓

1343 feet - 1193 feet

150 feet plug

12 sacks of Class B Cement

Plug 4 ✓

3115 feet - 2700 feet

415 feet plug

35 sacks of Class B Cement

Plug 3 ✓

4095 feet - 3945 feet

150 feet plug

12 sacks of Class B Cement

Plug 2 ✓

5005 feet - 4866 feet

139 feet plug

12 sacks of Class B Cement

Plug 1 ✓

5834 feet - 5784 feet

36 feet plug

6 sacks of Class B Cement

Perforations

X 5834 feet - 5798 feet

5910 feet - 5924 feet

*top perf
@ 5884'

Surface Casing

8.625" 24# @ 371 ft

Formation

Pictured Cliffs - 1293 feet

Mesa Verde - 3065 feet

Mancos - 4045 feet

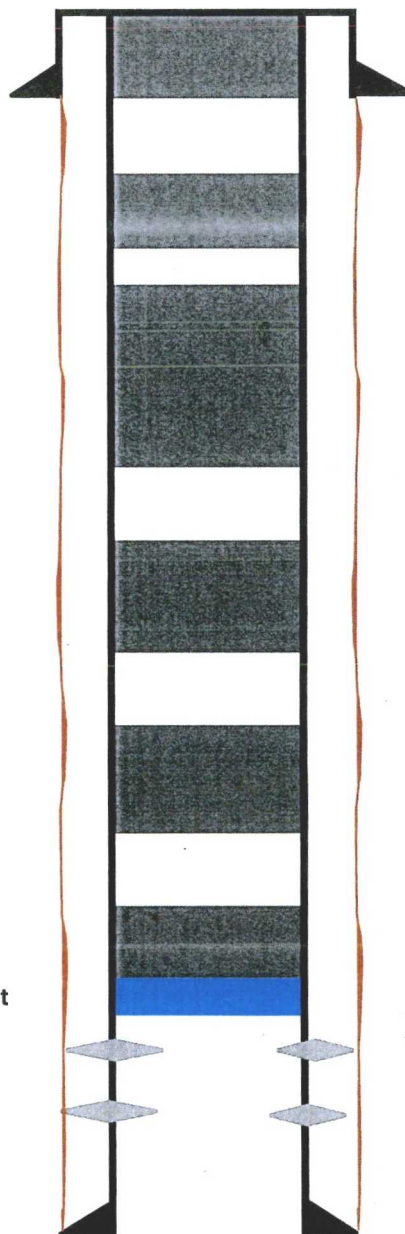
Gallup - 4955 feet

Dakota - 5933 feet

Retainer @ 5834 feet

Production Casing

4.5" 10.5# @ 6054 ft



UNITED STATES DEPARTMENT OF THE INTERIOR
BUREAU OF LAND MANAGEMENT
FARMINGTON DISTRICT OFFICE
6251 COLLEGE BLVD.
FARMINGTON, NEW MEXICO 87402

Attachment to notice of
Intention to Abandon:

Re: Permanent Abandonment
Well: GCU #198

CONDITIONS OF APPROVAL

1. Plugging operations authorized are subject to the attached "General Requirements for Permanent Abandonment of Wells on Federal and Indian Lease."
2. Farmington Office is to be notified at least 24 hours before the plugging operations commence (505) 564-7750.
3. The following modifications to your plugging program are to be made:
 - a) Set a cement plug (1056 – 956) ft. to cover the Fruitland top. BLM picks top of Fruitland at 1006 ft.

Operator will run a CBL to verify cement top. Submit the electronic copy of the log for verification to the following addresses: jwsavage@blm.gov brandon.powell@state.nm.us

You are also required to place cement excesses per 4.2 and 4.4 of the attached General Requirements.

Office Hours: 7:45 a.m. to 4:30 p.m.