

District I  
1625 N. French Dr., Hobbs, NM 88240  
District II  
1301 W. Grand Avenue, Artesia, NM 88210  
District III  
1000 Rio Brazos Road, Aztec, NM 87410  
District IV  
1220 S. St. Francis Dr., Santa Fe, NM 87505

State of New Mexico  
Energy Minerals and Natural Resources  
Department  
Oil Conservation Division  
1220 South St. Francis Dr.  
Santa Fe, NM 87505

Form C-144  
July 21, 2008

For temporary pits, closed-loop systems, and below-grade tanks, submit to the appropriate NMOCD District Office.  
For permanent pits and exceptions submit to the Santa Fe Environmental Bureau office and provide a copy to the appropriate NMOCD District Office.

Pit, Closed-Loop System, Below-Grade Tank, or  
Proposed Alternative Method Permit or Closure Plan Application

- Type of action: ☒ Permit of a pit, closed-loop system, below-grade tank, or proposed alternative method  
☐ Closure of a pit, closed-loop system, below-grade tank, or proposed alternative method  
☐ Modification to an existing permit  
☒ Closure plan only submitted for an existing permitted or non-permitted pit, closed-loop system, below-grade tank, or proposed alternative method

**Instructions:** Please submit one application (Form C-144) per individual pit, closed-loop system, below-grade tank or alternative request

Please be advised that approval of this request does not relieve the operator of liability should operations result in pollution of surface water, ground water or the environment. Nor does approval relieve the operator of its responsibility to comply with any other applicable governmental authority's rules, regulations or ordinances.

1.  
Operator: Dugan Production Corp. OGRID #: 006515  
Address: 709 East Murray Drive, Farmington, New Mexico 87401  
Facility or well name: January Jamboree #1  
API Number: 30-045-31229 OCD Permit Number: \_\_\_\_\_  
U/L or Qtr/Qtr L Section 31 Township 24N Range 9W County: San Juan  
Center of Proposed Design: Latitude 36.26828 North Longitude 107.83604 West NAD: ☒ 1927 ☐ 1983  
Surface Owner: ☐ Federal ☐ State ☐ Private ☒ Tribal Trust or Indian Allotment

2.  
☐ **Pit:** Subsection F or G of 19.15.17.11 NMAC  
Temporary: ☐ Drilling ☐ Workover  
☐ Permanent ☐ Emergency ☐ Cavitation ☐ P&A  
☐ Lined ☐ Unlined Liner type: Thickness \_\_\_\_\_ mil ☐ LLDPE ☐ HDPE ☐ PVC ☐ Other \_\_\_\_\_  
☐ String-Reinforced  
Liner Seams: ☐ Welded ☐ Factory ☐ Other \_\_\_\_\_ Volume: \_\_\_\_\_ bbl Dimensions: L \_\_\_\_\_ x W \_\_\_\_\_ x D \_\_\_\_\_

3.  
☐ **Closed-loop System:** Subsection H of 19.15.17.11 NMAC  
Type of Operation: ☐ P&A ☐ Drilling a new well ☐ Workover or Drilling (Applies to activities which require prior approval of a permit or notice of intent)  
☐ Drying Pad ☐ Above Ground Steel Tanks ☐ Haul-off Bins ☐ Other \_\_\_\_\_  
☐ Lined ☐ Unlined Liner type: Thickness \_\_\_\_\_ mil ☐ LLDPE ☐ HDPE ☐ PVC ☐ Other \_\_\_\_\_  
Liner Seams: ☐ Welded ☐ Factory ☐ Other \_\_\_\_\_

4.  
☒ **Below-grade tank:** Subsection I of 19.15.17.11 NMAC  
Volume: 100 bbl Type of fluid: Producer H2O  
Tank Construction material: Steel (See Closure Plan #3)  
☐ Secondary containment with leak detection ☐ Visible sidewalls, liner, 6-inch lift and automatic overflow shut-off  
☐ Visible sidewalls and liner ☐ Visible sidewalls only ☒ Other No visible sidewalls + Leak detection  
Liner type: Thickness \_\_\_\_\_ mil ☐ HDPE ☐ PVC ☐ Other \_\_\_\_\_

5.  
☐ **Alternative Method:**  
Submittal of an exception request is required. Exceptions must be submitted to the Santa Fe Environmental Bureau office for consideration of approval.

28

6.

**Fencing:** Subsection D of 19.15.17.11 NMAC (*Applies to permanent pits, temporary pits, and below-grade tanks*)

- ☐ Chain link, six feet in height, two strands of barbed wire at top (*Required if located within 1000 feet of a permanent residence, school, hospital, institution or church*)
- ☐ Four foot height, four strands of barbed wire evenly spaced between one and four feet
- ☒ Alternate. Please specify 4' = 3' Hog wire + 1 Strand barbed wire

7.

**Netting:** Subsection E of 19.15.17.11 NMAC (*Applies to permanent pits and permanent open top tanks*)

- ☒ Screen ☐ Netting ☐ Other \_\_\_\_\_
- ☒ Monthly inspections (If netting or screening is not physically feasible)

8.

**Signs:** Subsection C of 19.15.17.11 NMAC

- ☒ 12"x 24", 2" lettering, providing Operator's name, site location, and emergency telephone numbers
- ☐ Signed in compliance with 19.15.3.103 NMAC

9.

**Administrative Approvals and Exceptions:**

Justifications and/or demonstrations of equivalency are required. Please refer to 19.15.17 NMAC for guidance.

**Please check a box if one or more of the following is requested, if not leave blank:**

- ☒ Administrative approval(s): Requests must be submitted to the appropriate division district or the Santa Fe Environmental Bureau office for consideration of approval.
- ☐ Exception(s): Requests must be submitted to the Santa Fe Environmental Bureau office for consideration of approval.

10.

**Siting Criteria (regarding permitting):** 19.15.17.10 NMAC

**Instructions:** The applicant must demonstrate compliance for each siting criteria below in the application. Recommendations of acceptable source material are provided below. Requests regarding changes to certain siting criteria may require administrative approval from the appropriate district office or may be considered an exception which must be submitted to the Santa Fe Environmental Bureau office for consideration of approval. Applicant must attach justification for request. Please refer to 19.15.17.10 NMAC for guidance. Siting criteria does not apply to drying pads or above-grade tanks associated with a closed-loop system.

Ground water is less than 50 feet below the bottom of the temporary pit, permanent pit, or below-grade tank. - NM Office of the State Engineer - iWATERS database search; USGS; Data obtained from nearby wells	<input type="checkbox"/> Yes <input checked="" type="checkbox"/> No
Within 300 feet of a continuously flowing watercourse, or 200 feet of any other significant watercourse or lakebed, sinkhole, or playa lake (measured from the ordinary high-water mark). - Topographic map; Visual inspection (certification) of the proposed site	<input checked="" type="checkbox"/> Yes <input type="checkbox"/> No
Within 300 feet from a permanent residence, school, hospital, institution, or church in existence at the time of initial application. (Applies to temporary, emergency, or cavitation pits and below-grade tanks) - Visual inspection (certification) of the proposed site; Aerial photo; Satellite image	<input type="checkbox"/> Yes <input checked="" type="checkbox"/> No <input type="checkbox"/> NA
Within 1000 feet from a permanent residence, school, hospital, institution, or church in existence at the time of initial application. (Applies to permanent pits) - Visual inspection (certification) of the proposed site; Aerial photo; Satellite image	<input type="checkbox"/> Yes <input checked="" type="checkbox"/> No <input type="checkbox"/> NA
Within 500 horizontal feet of a private, domestic fresh water well or spring that less than five households use for domestic or stock watering purposes, or within 1000 horizontal feet of any other fresh water well or spring, in existence at the time of initial application. - NM Office of the State Engineer - iWATERS database search; Visual inspection (certification) of the proposed site	<input type="checkbox"/> Yes <input checked="" type="checkbox"/> No
Within incorporated municipal boundaries or within a defined municipal fresh water well field covered under a municipal ordinance adopted pursuant to NMSA 1978, Section 3-27-3, as amended. - Written confirmation or verification from the municipality; Written approval obtained from the municipality	<input type="checkbox"/> Yes <input checked="" type="checkbox"/> No
Within 500 feet of a wetland. - US Fish and Wildlife Wetland Identification map; Topographic map; Visual inspection (certification) of the proposed site	<input type="checkbox"/> Yes <input checked="" type="checkbox"/> No
Within the area overlying a subsurface mine. - Written confirmation or verification or map from the NM EMNRD-Mining and Mineral Division	<input type="checkbox"/> Yes <input checked="" type="checkbox"/> No
Within an unstable area. - Engineering measures incorporated into the design; NM Bureau of Geology & Mineral Resources; USGS; NM Geological Society; Topographic map	<input type="checkbox"/> Yes <input checked="" type="checkbox"/> No
Within a 100-year floodplain. - FEMA map	<input type="checkbox"/> Yes <input checked="" type="checkbox"/> No



11.

**Temporary Pits, Emergency Pits, and Below-grade Tanks Permit Application Attachment Checklist:** Subsection B of 19.15.17.9 NMAC*Instructions: Each of the following items must be attached to the application. Please indicate, by a check mark in the box, that the documents are attached.*

- ☒ Hydrogeologic Report (Below-grade Tanks) - based upon the requirements of Paragraph (4) of Subsection B of 19.15.17.9 NMAC
- ☐ Hydrogeologic Data (Temporary and Emergency Pits) - based upon the requirements of Paragraph (2) of Subsection B of 19.15.17.9 NMAC
- ☒ Siting Criteria Compliance Demonstrations - based upon the appropriate requirements of 19.15.17.10 NMAC
- ☒ Design Plan - based upon the appropriate requirements of 19.15.17.11 NMAC
- ☒ Operating and Maintenance Plan - based upon the appropriate requirements of 19.15.17.12 NMAC
- ☒ Closure Plan (Please complete Boxes 14 through 18, if applicable) - based upon the appropriate requirements of Subsection C of 19.15.17.9 NMAC and 19.15.17.13 NMAC

☐ Previously Approved Design (attach copy of design)      API Number: \_\_\_\_\_ or Permit Number: \_\_\_\_\_

12.

**Closed-loop Systems Permit Application Attachment Checklist:** Subsection B of 19.15.17.9 NMAC*Instructions: Each of the following items must be attached to the application. Please indicate, by a check mark in the box, that the documents are attached.*

- ☐ Geologic and Hydrogeologic Data (only for on-site closure) - based upon the requirements of Paragraph (3) of Subsection B of 19.15.17.9
- ☐ Siting Criteria Compliance Demonstrations (only for on-site closure) - based upon the appropriate requirements of 19.15.17.10 NMAC
- ☐ Design Plan - based upon the appropriate requirements of 19.15.17.11 NMAC
- ☐ Operating and Maintenance Plan - based upon the appropriate requirements of 19.15.17.12 NMAC
- ☐ Closure Plan (Please complete Boxes 14 through 18, if applicable) - based upon the appropriate requirements of Subsection C of 19.15.17.9 NMAC and 19.15.17.13 NMAC

☐ Previously Approved Design (attach copy of design)      API Number: \_\_\_\_\_

☐ Previously Approved Operating and Maintenance Plan      API Number: \_\_\_\_\_ (Applies only to closed-loop system that use above ground steel tanks or haul-off bins and propose to implement waste removal for closure)

13.

**Permanent Pits Permit Application Checklist:** Subsection B of 19.15.17.9 NMAC*Instructions: Each of the following items must be attached to the application. Please indicate, by a check mark in the box, that the documents are attached.*

- ☐ Hydrogeologic Report - based upon the requirements of Paragraph (1) of Subsection B of 19.15.17.9 NMAC
- ☐ Siting Criteria Compliance Demonstrations - based upon the appropriate requirements of 19.15.17.10 NMAC
- ☐ Climatological Factors Assessment
- ☐ Certified Engineering Design Plans - based upon the appropriate requirements of 19.15.17.11 NMAC
- ☐ Dike Protection and Structural Integrity Design - based upon the appropriate requirements of 19.15.17.11 NMAC
- ☐ Leak Detection Design - based upon the appropriate requirements of 19.15.17.11 NMAC
- ☐ Liner Specifications and Compatibility Assessment - based upon the appropriate requirements of 19.15.17.11 NMAC
- ☐ Quality Control/Quality Assurance Construction and Installation Plan
- ☐ Operating and Maintenance Plan - based upon the appropriate requirements of 19.15.17.12 NMAC
- ☐ Freeboard and Overtopping Prevention Plan - based upon the appropriate requirements of 19.15.17.11 NMAC
- ☐ Nuisance or Hazardous Odors, including H<sub>2</sub>S, Prevention Plan
- ☐ Emergency Response Plan
- ☐ Oil Field Waste Stream Characterization
- ☐ Monitoring and Inspection Plan
- ☐ Erosion Control Plan
- ☐ Closure Plan - based upon the appropriate requirements of Subsection C of 19.15.17.9 NMAC and 19.15.17.13 NMAC

14.

**Proposed Closure:** 19.15.17.13 NMAC*Instructions: Please complete the applicable boxes, Boxes 14 through 18, in regards to the proposed closure plan.*

Type: ☐ Drilling ☐ Workover ☐ Emergency ☐ Cavitation ☐ P&A ☐ Permanent Pit ☒ Below-grade Tank ☐ Closed-loop System

☐ Alternative

Proposed Closure Method: ☒ Waste Excavation and Removal

☐ Waste Removal (Closed-loop systems only)

☐ On-site Closure Method (Only for temporary pits and closed-loop systems)

☐ In-place Burial ☐ On-site Trench Burial

☐ Alternative Closure Method (Exceptions must be submitted to the Santa Fe Environmental Bureau for consideration)

15.

**Waste Excavation and Removal Closure Plan Checklist:** (19.15.17.13 NMAC) *Instructions: Each of the following items must be attached to the closure plan. Please indicate, by a check mark in the box, that the documents are attached.*

- ☒ Protocols and Procedures - based upon the appropriate requirements of 19.15.17.13 NMAC
- ☒ Confirmation Sampling Plan (if applicable) - based upon the appropriate requirements of Subsection F of 19.15.17.13 NMAC
- ☒ Disposal Facility Name and Permit Number (for liquids, drilling fluids and drill cuttings)
- ☒ Soil Backfill and Cover Design Specifications - based upon the appropriate requirements of Subsection H of 19.15.17.13 NMAC
- ☒ Re-vegetation Plan - based upon the appropriate requirements of Subsection I of 19.15.17.13 NMAC
- ☒ Site Reclamation Plan - based upon the appropriate requirements of Subsection G of 19.15.17.13 NMAC

16.

**Waste Removal Closure For Closed-loop Systems That Utilize Above Ground Steel Tanks or Haul-off Bins Only:** (19.15.17.13.D NMAC)

*Instructions: Please identify the facility or facilities for the disposal of liquids, drilling fluids and drill cuttings. Use attachment if more than two facilities are required.*

Disposal Facility Name: \_\_\_\_\_ Disposal Facility Permit Number: \_\_\_\_\_

Disposal Facility Name: \_\_\_\_\_ Disposal Facility Permit Number: \_\_\_\_\_

Will any of the proposed closed-loop system operations and associated activities occur on or in areas that *will not* be used for future service and operations?

☐ Yes (If yes, please provide the information below) ☐ No

*Required for impacted areas which will not be used for future service and operations:*

☐ Soil Backfill and Cover Design Specifications - based upon the appropriate requirements of Subsection H of 19.15.17.13 NMAC

☐ Re-vegetation Plan - based upon the appropriate requirements of Subsection I of 19.15.17.13 NMAC

☐ Site Reclamation Plan - based upon the appropriate requirements of Subsection G of 19.15.17.13 NMAC

17.

**Siting Criteria (regarding on-site closure methods only):** 19.15.17.10 NMAC

*Instructions: Each siting criteria requires a demonstration of compliance in the closure plan. Recommendations of acceptable source material are provided below. Requests regarding changes to certain siting criteria may require administrative approval from the appropriate district office or may be considered an exception which must be submitted to the Santa Fe Environmental Bureau office for consideration of approval. Justifications and/or demonstrations of equivalency are required. Please refer to 19.15.17.10 NMAC for guidance.*

Ground water is less than 50 feet below the bottom of the buried waste.

- NM Office of the State Engineer - iWATERS database search; USGS; Data obtained from nearby wells

☐ Yes ☐ No  
☐ NA

Ground water is between 50 and 100 feet below the bottom of the buried waste

- NM Office of the State Engineer - iWATERS database search; USGS; Data obtained from nearby wells

☐ Yes ☐ No  
☐ NA

Ground water is more than 100 feet below the bottom of the buried waste.

- NM Office of the State Engineer - iWATERS database search; USGS; Data obtained from nearby wells

☐ Yes ☐ No  
☐ NA

Within 300 feet of a continuously flowing watercourse, or 200 feet of any other significant watercourse or lakebed, sinkhole, or playa lake (measured from the ordinary high-water mark).

- Topographic map; Visual inspection (certification) of the proposed site

☐ Yes ☐ No

Within 300 feet from a permanent residence, school, hospital, institution, or church in existence at the time of initial application.

- Visual inspection (certification) of the proposed site; Aerial photo; Satellite image

☐ Yes ☐ No

Within 500 horizontal feet of a private, domestic fresh water well or spring that less than five households use for domestic or stock watering purposes, or within 1000 horizontal feet of any other fresh water well or spring, in existence at the time of initial application.

- NM Office of the State Engineer - iWATERS database; Visual inspection (certification) of the proposed site

☐ Yes ☐ No

Within incorporated municipal boundaries or within a defined municipal fresh water well field covered under a municipal ordinance adopted pursuant to NMSA 1978, Section 3-27-3, as amended.

- Written confirmation or verification from the municipality; Written approval obtained from the municipality

☐ Yes ☐ No

Within 500 feet of a wetland.

- US Fish and Wildlife Wetland Identification map; Topographic map; Visual inspection (certification) of the proposed site

☐ Yes ☐ No

Within the area overlying a subsurface mine.

- Written confirmation or verification or map from the NM EMNRD-Mining and Mineral Division

☐ Yes ☐ No

Within an unstable area.

- Engineering measures incorporated into the design; NM Bureau of Geology & Mineral Resources; USGS; NM Geological Society; Topographic map

☐ Yes ☐ No

Within a 100-year floodplain.

- FEMA map

☐ Yes ☐ No

18.

**On-Site Closure Plan Checklist:** (19.15.17.13 NMAC) *Instructions: Each of the following items must be attached to the closure plan. Please indicate, by a check mark in the box, that the documents are attached.*

☐ Siting Criteria Compliance Demonstrations - based upon the appropriate requirements of 19.15.17.10 NMAC

☐ Proof of Surface Owner Notice - based upon the appropriate requirements of Subsection F of 19.15.17.13 NMAC

☐ Construction/Design Plan of Burial Trench (if applicable) based upon the appropriate requirements of 19.15.17.11 NMAC

☐ Construction/Design Plan of Temporary Pit (for in-place burial of a drying pad) - based upon the appropriate requirements of 19.15.17.11 NMAC

☐ Protocols and Procedures - based upon the appropriate requirements of 19.15.17.13 NMAC

☐ Confirmation Sampling Plan (if applicable) - based upon the appropriate requirements of Subsection F of 19.15.17.13 NMAC

☐ Waste Material Sampling Plan - based upon the appropriate requirements of Subsection F of 19.15.17.13 NMAC

☐ Disposal Facility Name and Permit Number (for liquids, drilling fluids and drill cuttings or in case on-site closure standards cannot be achieved)

☐ Soil Cover Design - based upon the appropriate requirements of Subsection H of 19.15.17.13 NMAC

☐ Re-vegetation Plan - based upon the appropriate requirements of Subsection I of 19.15.17.13 NMAC

☐ Site Reclamation Plan - based upon the appropriate requirements of Subsection G of 19.15.17.13 NMAC



19.

**Operator Application Certification:**

I hereby certify that the information submitted with this application is true, accurate and complete to the best of my knowledge and belief.

Name (Print): Kurt Fagrelus Title: Vice President, Exploration

Signature:  Date: November 15, 2008

e-mail address: kfagrelus@duganproduction.com Telephone: 505-325-1821 (O) , 505-320-8248 (C)

20.

**OCD Approval:** ☐ Permit Application (including closure plan) ☒ Closure Plan (only) ☐ OCD Conditions (see attachment)

OCD Representative Signature:  Approval Date: 7/23/08

Title: Environmental Spec OCD Permit Number: \_\_\_\_\_

21.

**Closure Report (required within 60 days of closure completion):** Subsection K of 19.15.17.13 NMAC

*Instructions: Operators are required to obtain an approved closure plan prior to implementing any closure activities and submitting the closure report. The closure report is required to be submitted to the division within 60 days of the completion of the closure activities. Please do not complete this section of the form until an approved closure plan has been obtained and the closure activities have been completed.*

☐ Closure Completion Date: \_\_\_\_\_

22.

**Closure Method:**

☐ Waste Excavation and Removal ☐ On-Site Closure Method ☐ Alternative Closure Method ☐ Waste Removal (Closed-loop systems only)  
☐ If different from approved plan, please explain.

23.

**Closure Report Regarding Waste Removal Closure For Closed-loop Systems That Utilize Above Ground Steel Tanks or Haul-off Bins Only:**

*Instructions: Please indentify the facility or facilities for where the liquids, drilling fluids and drill cuttings were disposed. Use attachment if more than two facilities were utilized.*

Disposal Facility Name: \_\_\_\_\_ Disposal Facility Permit Number: \_\_\_\_\_

Disposal Facility Name: \_\_\_\_\_ Disposal Facility Permit Number: \_\_\_\_\_

Were the closed-loop system operations and associated activities performed on or in areas that *will not* be used for future service and operations?

☐ Yes (If yes, please demonstrate compliance to the items below) ☐ No

*Required for impacted areas which will not be used for future service and operations:*

- ☐ Site Reclamation (Photo Documentation)  
☐ Soil Backfilling and Cover Installation  
☐ Re-vegetation Application Rates and Seeding Technique

24.

**Closure Report Attachment Checklist:** *Instructions: Each of the following items must be attached to the closure report. Please indicate, by a check mark in the box, that the documents are attached.*

- ☐ Proof of Closure Notice (surface owner and division)  
☐ Proof of Deed Notice (required for on-site closure)  
☐ Plot Plan (for on-site closures and temporary pits)  
☐ Confirmation Sampling Analytical Results (if applicable)  
☐ Waste Material Sampling Analytical Results (required for on-site closure)  
☐ Disposal Facility Name and Permit Number  
☐ Soil Backfilling and Cover Installation  
☐ Re-vegetation Application Rates and Seeding Technique  
☐ Site Reclamation (Photo Documentation)

On-site Closure Location: Latitude \_\_\_\_\_ Longitude \_\_\_\_\_ NAD: ☐ 1927 ☐ 1983

25.

**Operator Closure Certification:**

I hereby certify that the information and attachments submitted with this closure report is true, accurate and complete to the best of my knowledge and belief. I also certify that the closure complies with all applicable closure requirements and conditions specified in the approved closure plan.

Name (Print): Kurt Fagrelus Title: Vice President, Exploration

Signature: \_\_\_\_\_ Date: \_\_\_\_\_

e-mail address: kfagrelus@duganproduction.com Telephone: 505-325-1821

### January Jamboree #1 Hydrogeologic Report

The January Jamboree #1 is located on Navajo Tribal Trust land on the Chaco Slope area of the San Juan Basin, in San Juan County, New Mexico. The area is characterized by an arid, westward sloping, gentle hilly terrain covered with sage, grass and isolated stands of pinon and juniper. It is well drained by numerous arroyos that carry water during seasonal periods (rainstorms and snowmelt) to the south and west.

A records search of the NM Office of the State Engineer –iWATERS database was conducted on a three square mile area centered on the January Jamboree #1 location (Exhibit 2). One water well is located 3,100 feet northwest of the below grade tank. This well was drilled to a total depth of 442-feet and the top of water was reported at 284-feet. The results of the search are shown on Exhibit 1.

The main source of stock water in the region is encountered in valley-fill deposits in existing arroyos at shallow depths of approximately 15 – 50 feet below the surface and stock tanks constructed on surface shale in the upper reaches and confluences of arroyos. The below grade tank is not located in an arroyo. The closest arroyo is located 200-feet east of the below grade tank (Exhibit 2) (See Visual Inspection Certification).

The Nacimiento Formation extends from the surface down to approximately 584-feet. From surface down to 150-feet, the interval consists primarily of mudstone / shale with a trace of siltstone. The interval from 150 to 575 has more siltstone (150-190 and 260-380), sand (550-575) and less mudstone / shale. The siltstone and sands have fair reservoir qualities and could contain poor quality groundwater.

The Nacimiento is a source of ground water for livestock purposes and more rarely domestic use in some areas near the outcrop. With depth and distance from the outcrop, water quality decreases quickly and may be useful for livestock only (Stone, 1982). Due to the high silt content in the sands, poor reservoir quality and unpredictable nature of sand occurrence, the Nacimiento is not expected to contain significant quantities of ground water in the area of the below grade tank.

The underlying Ojo Alamo Sandstone ranges from approximately 581 down to 669-feet and is comprised of a coarse grained alluvial sandstone inter-bedded with lenses of mudstone and occasional conglomeratic sandstone. The Ojo could provide a greater volume of poor quality groundwater.

Based on electric open hole logs, the iWATERS database, literature reviewed, poor quality groundwater might be found a depth below 150-feet from, discontinuous, siltstone and shaly sands in the Nacimiento Formation. However, the underlying Ojo Alamo Sandstone (581-669 feet) is capable of producing a larger volume of better quality groundwater.

The excessive drilling depth to reservoirs with unpredictable variations in reservoir quality and water quality has discouraged the drilling of water wells in the area.

This Hydrogeologic Report was prepared by Mr. Kurt Fagrelus, Geologist for Dugan Production. Mr. Fagrelus has been employed as a geologist for Dugan for the past 31-years, received a MS in Geology from NMIMT in Socorro, NM and a BS in Geology from FLC in Durango, CO.

Stone, W.J., Lyford, F.P., Frenzel, P.F., Mizell, N.H., and Padgett, E.T., 1983, Hydrogeology and water resources of San Juan Basin, New Mexico: New Mexico Bureau of Mines and Mineral Resources Hydrologic Report 6, 70 p.

Brown, D.R., and Stone, W.J., 1979, Hydrogeology of Aztec quadrangle, San Juan County, New Mexico: New Mexico Bureau of Mines and Mineral Resources Hydrogeologic Sheet 1.

Levings, G.W., Craig, S.D., Dam, W.L., Kernodle, J.M., and Thorn, C.R., 1990, Hydrogeology of the San Jose, Nacimiento, and Animas Formations in the San Juan Structural Basin, New Mexico, Colorado, Arizona and Utah: U.S. Geological Survey, Atlas HA-720-A, Sheet 1 and 2.

Thorn, C.R., Levings, G.W., Craig, S.D., Dam, W.L., and Kernodle, J.M., 1990, Hydrogeology of the Ojo Alamo Sandstone in the San Juan Structural Basin, New Mexico, Colorado, Arizona and Utah: U.S.G.S, Atlas HA-720-B, Sheet 1 and 2.



*New Mexico Office of the State Engineer*  
**POD Reports and Downloads**

**EXHIBIT 1.**

Township: 24N    Range: 09W    Sections: 29,30,31,32

NAD27   X:                      Y:                      Zone:                      Search Radius:

County:                      Basin:                      Number:                      Suffix:

Owner Name: (First)                      (Last)                      ☐ Non-Domestic    ☐ Domestic    ☒ All

POD / Surface Data Report    Avg Depth to Water Report    Water Column Report

Clear Form    iWATERS Menu    Help

**WATER COLUMN REPORT 12/02/2008**

(quarters are 1=NW 2=NE 3=SW 4=SE)  
 (quarters are biggest to smallest)

POD Number	Tws	Rng	Sec	q	q	q	Zone	X	Y	Depth Well	Depth Water	Water (in feet) Column
------------	-----	-----	-----	---	---	---	------	---	---	---------------	----------------	---------------------------

No Records found, try again

*New Mexico Office of the State Engineer*  
**POD Reports and Downloads**

Township: 23N Range: 09W Sections: 5,6

NAD27 X: Y: Zone: Search Radius:

County: Basin: Number: Suffix:

Owner Name: (First) (Last) ☐ Non-Domestic ☐ Domestic ☒ All

POD / Surface Data Report Avg Depth to Water Report Water Column Report

Clear Form | iWATERS Menu | Help

**WATER COLUMN REPORT 12/02/2008**

(quarters are 1=NW 2=NE 3=SW 4=SE)

(quarters are biggest to smallest)

POD Number	Tws	Rng	Sec	q	q	q	Zone	X	Y	Depth Well	Depth Water	Water (in feet) Column
------------	-----	-----	-----	---	---	---	------	---	---	---------------	----------------	---------------------------

No Records found, try again



*New Mexico Office of the State Engineer*  
**POD Reports and Downloads**

Township: 23N Range: 10W Sections: 1

NAD27 X: Y: Zone: Search Radius:

County: Basin: Number: Suffix:

Owner Name: (First) (Last) ☐ Non-Domestic ☐ Domestic ☒ All

POD / Surface Data Report Avg Depth to Water Report Water Column Report

Clear Form | iWATERS Menu | Help

**WATER COLUMN REPORT 12/02/2008**

(quarters are 1=NW 2=NE 3=SW 4=SE)  
(quarters are biggest to smallest)

POD Number	Tws	Rng	Sec	q	q	q	Zone	X	Y	Depth Well	Depth Water	Water (in feet) Column	--
------------	-----	-----	-----	---	---	---	------	---	---	---------------	----------------	---------------------------	----

No Records found, try again

*New Mexico Office of the State Engineer*  
**POD Reports and Downloads**

Township: 24N Range: 10W Sections: 25,36

NAD27 X: Y: Zone: Search Radius:

County: Basin: Number: Suffix:

Owner Name: (First) (Last) ☐ Non-Domestic ☐ Domestic ☒ All

POD / Surface Data Report Avg Depth to Water Report Water Column Report

Clear Form iWATERS Menu Help

**WATER COLUMN REPORT 12/02/2008**

(quarters are 1=NW 2=NE 3=SW 4=SE)  
(quarters are biggest to smallest)

POD Number	Tws	Rng	Sec	q	q	q	Zone	X	Y	Depth Well	Depth Water	Water (in feet) Column
<u>SJ 01714</u>	24N	10W	36	4	3					442	284	158

Record Count: 1



### **Siting Criteria for the January Jamboree #1 Below Grade Tank**

1. Ground water is not less than 50-feet below the bottom of the below grade tank. Ground water is greater than 100-feet below the bottom of the below grade tank (See Hydrogeologic Report).
2. The below grade tank is not within 300-feet of a continuously flowing water course but is within 200 feet of any other watercourse, lakebed, sinkhole, or playa lake (measured from ordinary high water mark). There is a very small arroyo 200-feet to the east. See the attached Topographic map (Exhibit 2) and Visual Inspection Certification of the location and area around the subject below grade tank.
3. The below grade tank is not within 300-feet from a permanent residence, school, hospital, institution, or church in existence at the time of initial application. See the attached Satellite Image (Exhibit 3) and Visual Inspection certification of the location and area around the subject below grade tank.
4. The below grade tank is not within 500-feet of a private, domestic fresh water well or spring that less than five households use for domestic or stock watering purposes, or within 1000 horizontal feet of any other fresh water well or spring, in existence at the time of initial application. See the attached NM Office of the State Engineer iWATERS database search (Exhibit 4) and Visual Inspection certification of the location and area around the subject below grade tank.
5. The below grade tank is not located within the incorporated municipal boundaries or within a defined municipal fresh water well field covered under a municipal ordinance adopted pursuant to NMSA 1978 Section 3-27-3, as amended. See the attached Topographic map of the location and area around the subject below grade tank.
6. The below grade tank is not located within 500-feet of a wetland. See the attached Topographic map and Visual Inspection Certification of the location and area around the subject below grade tank.
7. The below grade tank is not located within the area overlying a subsurface mine. See the attached Mine, Mills and Quarry Map of New Mexico (New Mexico, EMND 2008) (Exhibit 5) showing the location and area around the subject pit.
8. The below grade tank is not located within an unstable area. See the attached Topographic map of the location and area around the subject below grade tank.
9. The below grade tank is not located within a 100-year floodplain area. See the attached FEMA map (Exhibit 6) of the 100 year floodplain showing the location and area around the subject below grade tank.

**January Jamboree #1 Below Grade Tank Visual Inspection Certification**

I, Kurt Fagrelus, Vice President of Exploration for Dugan Production Corp. 709 East Murray Drive, Farmington, New Mexico hereby certify that I or persons under my direct supervision, prepared the attached exhibits and conducted a Visual Inspection of the location and area around the January Jamboree #1 below grade tank (August 11, 2008).

The location of the January Jamboree #1 below grade tank is not in full compliance with all siting criteria and standards for below grade tanks established by the State of New Mexico, Energy Minerals and Natural Resources Department 19.15.17.10 NMAC. There is an arroyo within 200-feet of the below grade tank (200-feet east).

Although this below grade tank does not meet the siting criteria in 19.15.17.10 NMAC, it is an existing below grade tank (inexistence prior to June 16, 2008) that will be closed and replaced with one that meets the design and construction requirements in 10.15.17.11 NMAC (Exhibit 7).

  
Kurt Fagrelus

December 6, 2008  
Date



October 16, 2008

Pit Rule (Part 17)

**FAQ: Does the Siting Criteria in 19.15.17.10 NMAC Apply to Existing Below-Grade Tanks?**

A: 19.15.17.17.D NMAC requires operators of existing below-grade tanks to apply for a permit within 90 days after June 16, 2008. Existing below-grade tanks do not have to be relocated to meet the siting criteria in 19.15.17.10 NMAC, but must meet the design and construction requirements in 19.15.17.11 NMAC. The operator must still supply the information required in 19.15.17.9 NMAC. The siting criteria apply to below-grade tanks located after June 16, 2008.

Please contact Wayne Price 505-476-3490 [wayne.price@state.nm.us](mailto:wayne.price@state.nm.us) or Brad Jones 505-476-3487 [brad.a.jones@state.nm.us](mailto:brad.a.jones@state.nm.us).

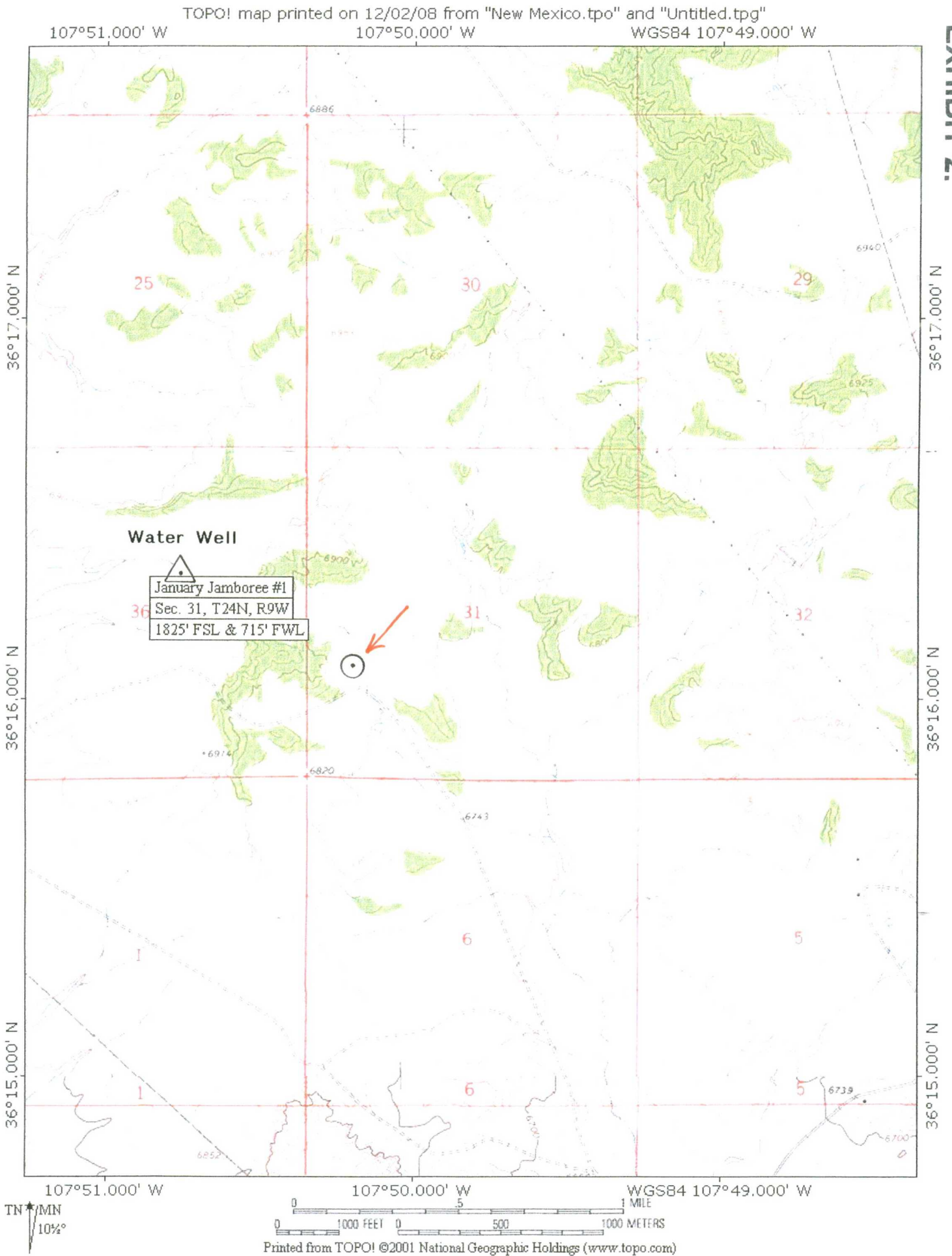




EXHIBIT 3.





*New Mexico Office of the State Engineer*  
**POD Reports and Downloads**

Township: 24N Range: 09W Sections: 31

NAD27 X: Y: Zone: Search Radius:

County: Basin: Number: Suffix:

Owner Name: (First) (Last) ☐ Non-Domestic ☐ Domestic ☒ All

POD / Surface Data Report Avg Depth to Water Report Water Column Report

[Clear Form](#) | [iWATERS Menu](#) [Help](#)

**WATER COLUMN REPORT 12/02/2008**

(quarters are 1=NW 2=NE 3=SW 4=SE)  
(quarters are biggest to smallest)

POD Number	Tw	Rs	Sec	q	q	q	Zone	X	Y	Depth Well	Depth Water	Water (in feet) Column
------------	----	----	-----	---	---	---	------	---	---	---------------	----------------	---------------------------

No Records found, try again

*New Mexico Office of the State Engineer*  
**POD Reports and Downloads**

Township: 23N Range: 09W Sections: 6

NAD27 X: Y: Zone: Search Radius:

County: Basin: Number: Suffix:

Owner Name: (First) (Last) ☐ Non-Domestic ☐ Domestic ☒ All

POD / Surface Data Report Avg Depth to Water Report Water Column Report

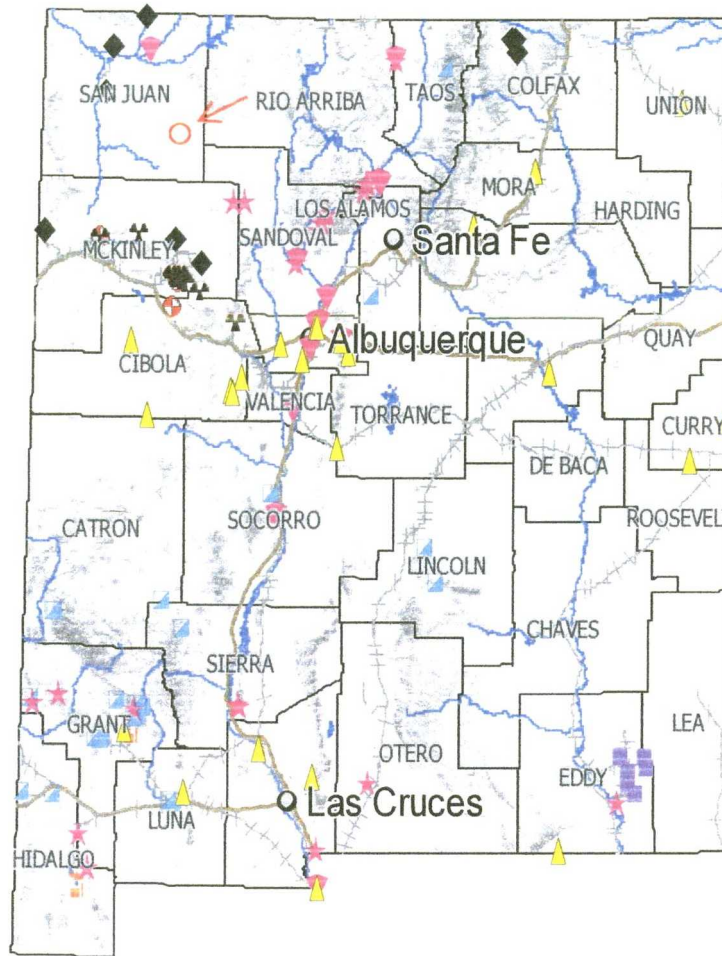
[Clear Form](#) [iWATERS Menu](#) [Help](#)

**WATER COLUMN REPORT 12/02/2008**

(quarters are 1=NW 2=NE 3=SW 4=SE)  
(quarters are biggest to smallest)

POD Number	Tws	Rng	Sec	q	q	q	Zone	X	Y	Depth Well	Depth Water	Water (in feet) Column
------------	-----	-----	-----	---	---	---	------	---	---	---------------	----------------	---------------------------

No Records found, try again

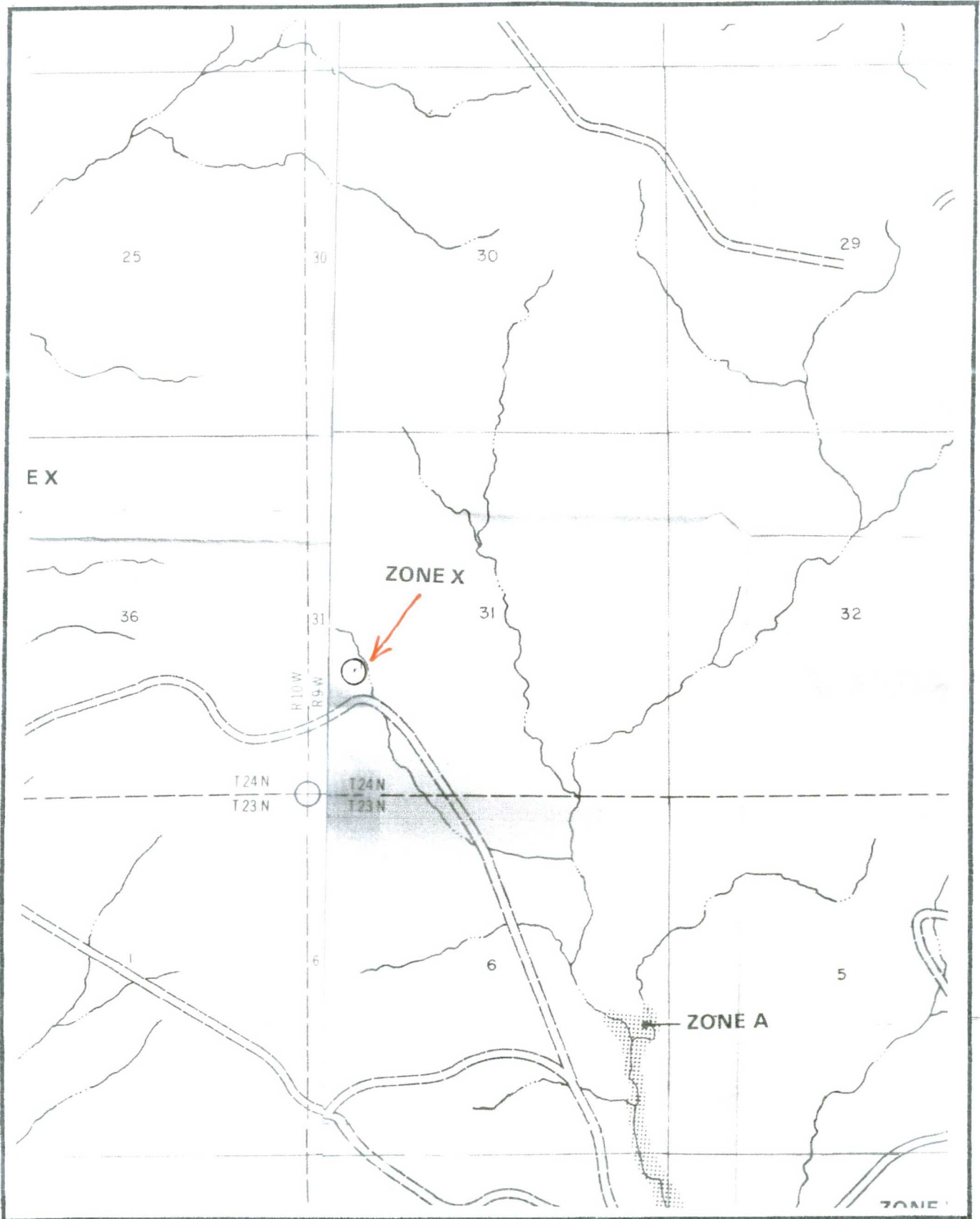


## Mine, Mills and Quarry Map of New Mexico

Dugan Production Corp.  
January Jamboree #1

Taken from the New Mexico Energy, Minerals and Natural Resources Department.  
Mining and Minerals Division.





FEMA 100-Year Floodplain Map  
January Jamboree #1

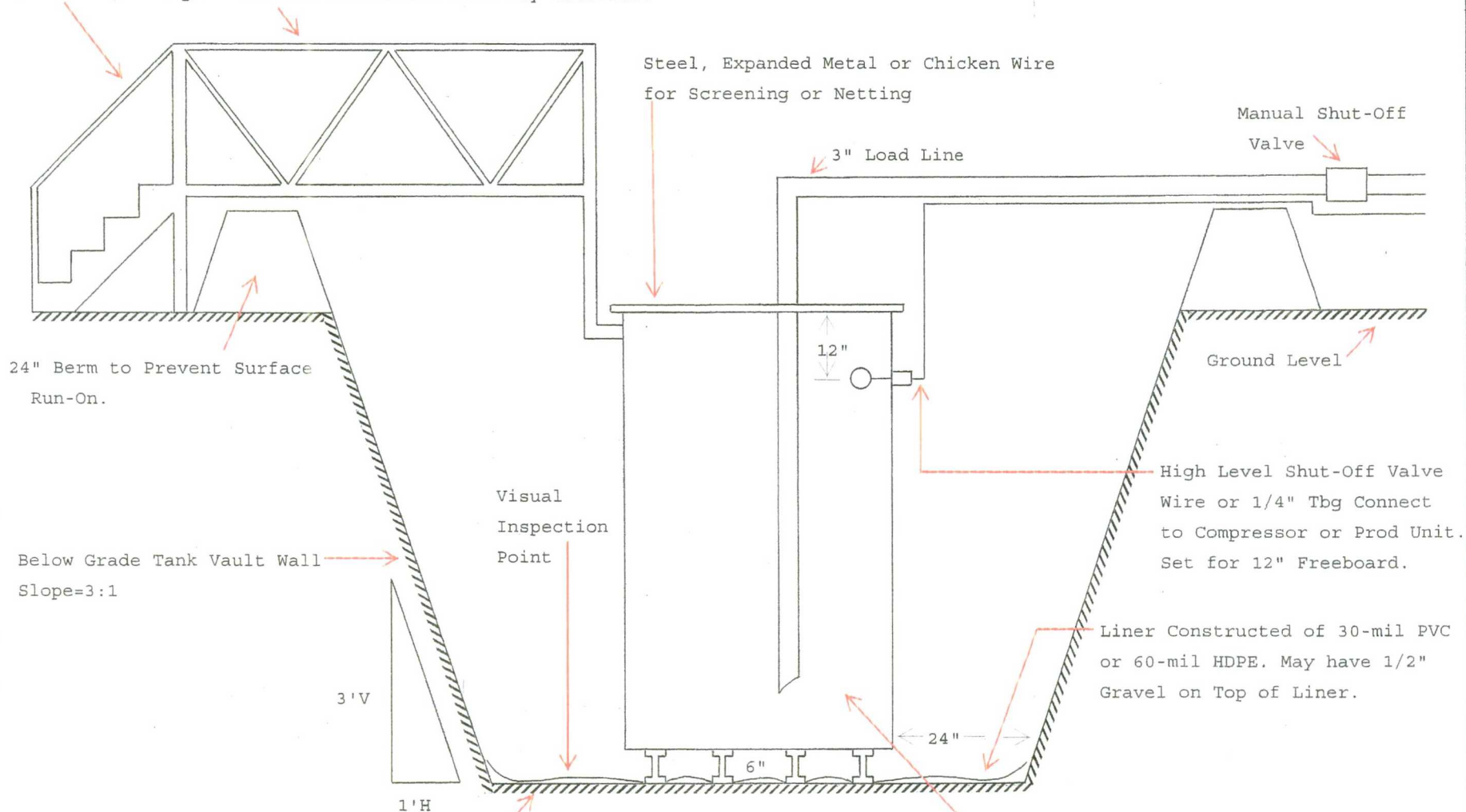
## **January Jamboree #1 Below Grade Tank Design and Construction Plan**

The January Jamboree #1 below grade tank will be designed and constructed in accordance with the following requirements:

1. Below grade tank will be designed and constructed to contain liquids and solids, prevent contamination of fresh water and protect the public health and environment (Exhibit 7).
2. Stockpile topsoil prior to digging below grade tank vault, keep separate from subsoil and use as final cover and fill when closing below grade tank vault.
3. Sign-12" by 24" with operator name, lease name, well #, location (unit letter, qtr/qtr, Sect., Twp., and Rge.) and emergency phone #'s will be posted on location. Sign will be posted in a location where it can be easily read.
4. Fencing around the January Jamboree #1 below grade tank will be constructed and operated in a manner that prevents unauthorized access and shall be maintained in good condition to protect the public and wildlife. Fencing will include a 4-foot hog wire fencing with two strands of barbed wire or top rail of re-bar or pipe on top. See the attached request for Administrative Approval. If the January Jamboree #1 below grade tank were located within 1000 feet of a house, school, hospital or church, a chain link fence at least six feet in height with at least two strands of bared wire on top would be constructed.
5. The January Jamboree #1 below grade tank will be covered with steel, expanded metal or chicken wire for screening or netting on top of the tank.
6. January Jamboree #1 below grade tank will be designed and constructed to ensure the confinement of liquids and prevent unauthorized releases. Pit will be constructed with a firm, level foundation and interior slopes, smooth and free of rocks or sharp edges to prevent punctures, cracks or indentations of the liner or tank bottom. Slope walls of the below grade tank vault will be constructed with a 3' vertical x 1' horizontal slope to prevent collapse of the walls. Dependent on soil conditions, 2"x12" pre-treated lumber will be used as needed to insure integrity of vault walls. Properly operating, high level shut off valve and manual control valves will be installed (valve will close when fluid reaches 12 inches from top of tank) to prevent overflow of tank. Berms (24 inches in height) will be constructed around the perimeter of the below grade tank vault to prevent overflow of the tank vault in the event the high level shut off valve fails and the below grade tank overflows and also prevent the collection and entrapment of surface water.
7. January Jamboree #1 below grade tank will be constructed of materials resistant to the tank's particular contents and resistant to damage from sunlight. Tank will be API rated and constructed of carbon steel with a wall thickness of 1/4".
8. Liner will be 30-mil flexible PVC or 60-mil HDPE, string reinforced, impervious material, resistant to UV light, hydrocarbons, salt, acidic or basic liquids. The liner will have a hydraulic conductivity less than  $1 \times 10^{-9}$  cm/sec. Liner compatibility will comply with EPA SW-846 Method 9090A. A specification sheet on properties of liner material to be used will be provided to the NMOCD prior to installation.

# EXHIBIT 7.

Walkway/Bridge With Steps and Handrail, Constructed of 2" X 1/8" Angle Iron and Perforated Walk-Way Material.



Below Grade Tank Vault-Firm, Level Foundation Free of Rocks, Debris or Irregularities. Slope of Vault Walls Will Be 3'-Vert/1'-Horiz. Dependent on Soil Conditions, 2" x 12" Pre-Treated Lumber will be used as needed to insure integrity of vault walls.

Dugan Production Corp.  
January Jamboree #1

Below Grade Tank-Single Wall, Constructed of 1/4" Carbon Steel, API Rated, Visible Walls and Liner. Tank will have a Minimum 6" Lift Above Underlying Liner and Set-Back at least 24" from Walls of Vault. Tank Volume 100 bbls, Depth 6 Feet



9. The January Jamboree #1 below grade tank will be constructed with single walled sides and bottom, which will be open for visual inspection for leaks. The below grade tank will be elevated a minimum of 6-inches above the underlying ground surface and set back at least 24" from walls of vault. The below grade tank will be underlain with a geo-membrane liner designed to divert any leaked fluid to a visual inspection point. Liner may be covered with gravel.
10. The January Jamboree #1 below grade tank will be equipped with a properly operating automatic high-level shut-off control device (valve will close when fluid reaches 12 inches from top of tank) and manual controls to prevent overflows.
11. Diversionary berms, ditches or sloping will be constructed as necessary to prevent overflow and the collection of surface water entrapment.
12. A walkway/bridge with steps and handrail, will be constructed of 2"x1/8" angle iron and perforated walkway material to provide personnel access to the top of below grade tank.

## **January Jamboree #1 Below Grade Tank Maintenance and Operation Plan**

The January Jamboree #1 below grade tank will be maintained and operated in accordance with the following requirements:

1. The January Jamboree #1 below grade tank will be operated and maintained to contain liquids and solids and maintain the integrity of the tank / liner system or secondary containment system to prevent contamination of fresh water and protect public health and environment. Design features which include containment berms and high level shut off valves and manual shut off valves will be constructed to insure containment of liquids and solids (Exhibit 7). Steel tank will be set level, with a minimum of 6 inches of lift underlain by a liner (sloped to one corner) on top of a firm, smooth foundation bottom (vault floor) will be constructed providing visual leak detection to insure tank integrity.
2. All fluids collected in the below grade tank and below grade tank vault will be recycled, reused, reclaimed or disposed of in a manner approved by NMOCD rules.
3. Do not dispose of solid waste, trash, debris or hazardous material into the below grade tank or the below grade tank vault.
4. If the January Jamboree #1 below grade tank develops a leak or if a penetration occurs below the liquids surface, all liquid will be removed above the damage or leak line within 48-hours. The NMOCD office will be notified within 48-hours of the discovery. The below grade tank / liner system or secondary containment system will then be either modified, retrofitted or replaced in accordance with Subsection I of 19.15.17.11 NMAC. If applicable, the replacement or retrofit below grade tank / liner system or secondary containment system will meet the design and construction requirements of rule 19.15.17.11 NMAC.

In the event a spill or undesirable event occurs, the provisions of rule 19.15.3.116 NMAC may apply. If considered a "Major Release" (any fluid greater than 25-bbls; any volume which results in fire, or will reach a water course, or may endanger public health, or results in substantial property or environmental damage; any gas greater than 500-mcf; any volume detrimental to water or exceeding established standards) verbal notice will be provided to the NMOCD Santa Fe Environmental Bureau Chief (Wayne Price at 505-476-3490) and Aztec District OCD (Brandon Powell at 505-334-6178) offices within 24-hours of discovery of leak, plus written notice will be provided to the NMOCD Aztec and Santa Fe Environmental Bureau within 15-days after discovery, using C-141. If considered a "Minor Release" (any fluid greater than 5-bbls but less than or equal to 25-bbls or any gas greater than 50-mcf but less than 500-mcf, written notice using Form C-141 will be provided to the NMOCD Santa Fe Environmental Bureau Chief in Santa Fe and the Aztec District OCD office. The Bureau of Land Management will be notified in accordance with the provisions of BLM NTL-3A.

5. Below grade tank will be constructed and operated in a manner that prevents the tank from over flow and prevents surface water from entering the pit. Diversion berms will be constructed around the sides of pit and an automatic high level shut-off will be installed.
6. Any measurable oil will be continuously removed from the January Jamboree #1 below grade tank to prevent a significant accumulation of oil overtime.

7. The January Jamboree #1 below grade tank will be inspected at least monthly and records of each inspection will be maintained for five years. The below grade monitoring report to be used, is shown below. Integrity inspections of fencing, berms, below grade tank, screening, below grade tank, vault slopes and leak detection will be made and recorded. Any solid waste, trash, debris or hazardous material in the below grade tank or below grade tank vault will be noted and removed. High level shut off valve and manual shut off valve will be tested to insure valves are operating properly. Freeboard and fluid levels in the below grade tank will be recorded, monitored and removed (See #2, Maintenance and Operation Plan) as needed. Records will be used to assist in scheduling frequency of future fluid removal.

Dugan Production Corp. Well Name and or Facility _____														
Below Grade Tank Monitoring Report														
Date	Check and Record Integrity						Trash Note and Pick-Up			Check for Proper Operation		Freeboard	Fluid Level	Signature
	Fence	Berms	Tank	Tank	Vault	Leak	Tank	Vault	Location	High Level	Manual	Minimum 12"		
				Screen	Slopes	Detect.				Shut off valve	Shut off valve	Top - Down	Bottom - Up	
D/Mo/Yr	G = Good, F = Fair, P = Poor						Y = Yes, N = No			G = Good, B = Bad		Feet & Inches		Monitor's

Inspect at least once a month and maintain records for at least five years.

8. Adequate freeboard will be maintained to prevent overtopping of the January Jamboree #1 below grade tank. High level shut off valves will close when fluid reaches 12 inches from top of tank.



## January Jamboree #1 Below Grade Tank Closure Plan—Methods, Procedures and Protocols

1. Comply with deadlines for closure of a pit or below grade tank established by the State of New Mexico, Energy Minerals and Natural Resources Department 19.15.17.13 NMAC, or an earlier date if required by the NMOCD in the case of imminent danger to fresh water, public health or the environment.

Existing	Permit Applc. Submittal or	File Closure Plan By	Stop Use By	Close By
On June 16, 2008	Modification Request			
Temporary Pit - Unlined	Not Permted under 19.15.17	7/16/2008	Upon drlg rig release	9/16/2008
Permanent Pit - Unlined or Lined	Not permitted with NMOCD	7/16/2008	6-16-2008	12/16/2008
Permanent Pit - Unlined	Permitted with NMOCD	12-16-2008	6-16-2010	6-16-2011
BGT-Aprvd. Design	Not Permted under 19.15.17	12/16/2008	failed integrity replc	
	Applc. by 9-16-2008		w/apprvd design	
BGT-Not Aprvd Design Nor Retrofit to Comply w/19.15.17	Not Permted under 19.15.17 Mod. Rqust by 9-16-2008	12/31/2008	6/16/2013	6-16-2013
BGT-Not Aprvd Design Nor Retrofit to comply w/19.15.17	NA	12/16/2008	6/16/2013	6/16/2013
Permanent Pit-Design and Constr	Mod. Rqust by 12-16-2008	12/16/2008	failed integrity replc	60-days after cessation
Does not comply w/19.15.17	Comply w/in 18-mos of aprvl	submit w/mod request	w/apprvd design	
Permitted and lined				
Permanent Pit-Design and Constr	Permit Applc by 12-16-2008	12/16/2008		60-days after cessation
Does not comply w/19.15.17	Comply w/in 18-mos of aprvl	submit w/permit Applc		
Registered and Lined				
Permanent Pit	Permitted under 19.15.17	60-Days prior to close		
Temporary Pit	Permitted under 19.15.17	Prior to closure	Upon drlg rig release	6-mos after rig release
BGT	Permitted under 19.15.17	12/16/2013	failed integrity replc	60-days after cessation
		or prior to closure	w/apprvd design	

2. Provide the NMOCD district office at least 72-hours notice but no greater than 1 week prior to any closure operations. Notice will include operator name, well name and number, API number, and location (unit letter, section, township and range).
3. The January Jamboree #1 below grade tank is not an approved design under rule 19.15.17. Upon approval of this application, the existing below grade tank will be closed and a new below grade tank that complies with the design requirements of rule 19.15.17 as illustrated in the design plan (Exhibit 7) will be constructed.

4. Below grade tank will be closed within 60-days after cessation of use or by 6-16-2013 whichever comes first.
5. Closure notice will be provided by certified mail to surface owner prior to closing the below grade tank. Proof of notice will be provided to the Environmental Bureau in the NMOCD Santa Fe office and attached to the final closure report.
6. Remove all liquid from below grade tank prior to closure and dispose of at the Dugan Production operated Sanchez O'Brien SWD #1 salt water disposal well (permit SWD-694) located 1650 feet from the South line and 990 feet from the West line (Unit L) of Section 6, Township 24 North, Range 9 West.
7. All solids from the below grade tank and all solids removed from the below grade tank vault will be excavated, hauled to and disposed of at either the Envirotech facility (permit #NM-01-0011) facility located in Section 6, Township 26 North, Range 10 West or the IEI facility (permit NM-01-0010B) located in Section 2, Township 29 North, Range 12 West.
8. Remove below grade tank and obtain prior approval from the NMOCD to dispose (in an approved NMOCD facility), recycle, reuse or reclaim the tank. Documentation of the final disposition of the tank will be provided to the NMOCD in the final closure report.
9. Remove pit liner system, if applicable and dispose of only the pit liner material at an NMOCD approved, solid waste facility (Waste Management's Crouch Mesa facility, San Juan County, New Mexico) in accordance with subparagraph (m) of Paragraph (1) of Subsection D of 19.15.9.712.
10. On site equipment associated with the below grade tank will be removed unless it is needed for some other purpose.
11. Collect at a minimum, a five point, composite sample; also, collect individual grab samples from any area that is wet, discolored or showing other evidence of a release; and analyze for Benzene, BTEX, TPH, GRO/DRO and chlorides to demonstrate that Benzene, BTEX, TPH, GRO/DRO and chlorides do not exceed the standards as specified in 19.15.17.13.E or the background chloride concentration, whichever is greater.

Components	Test Method	Limit (mg/kg)
Benzene	EPA SW-846 8021B or 8260B	0.2
BTEX	EPA SW-846 8021B or 8260B	50
TPH	EPA SW-846 418.1	100
GRO/DRO	EPA SW-846 8015M	NS
Chlorides	EPA 300.1	250 or Background

12. The NMOCD will be notified of the testing results on form C-141.
13. If it is determined that a release has occurred, rule 19.15.3.116 NMAC and 19.15.1.19 NMAC will be complied with as required.



14. If the sampling results demonstrate that a release has not occurred, or that any release does not exceed the concentrations specified above or background concentrations, the below grade tank vault will be backfilled with compacted, non-waste containing, earthen material.
15. Stockpiled sub-surface soil will be used to backfill below grade tank vault and re-contour (to a final or intermediate cover that blends with the surrounding topography). A minimum of four feet of compacted, non-waste containing, earthen material will be used as backfill.
16. Stockpiled surface soil will be used as a cover over the backfilled below grade tank vault and disturbed area no longer needed for production operations. The soil cover will include either the background thickness of topsoil or one foot of suitable material to establish vegetation at the site whichever is greater. The soil cover will be constructed to the site's existing grade and prevent water collection or ponding and erosion of the cover material.
17. Disturbed areas will be seeded the first growing season after the below grade tank is closed. Seeding will be accomplished by drilling on contour whenever possible or by other division approved methods. BLM stipulated seed mixes will be used on all Federal lands and NMOCD approved seed mixes (administratively approved if required) will be used on all State or private lands. Vegetative cover will equal 70% of the native perennial vegetative cover (un-impacted) consisting of at least three native plant species, including at least one grass, but not including noxious weeds, and maintain that cover through two successive growing seasons. If alternate seed mix is required by the state, private owner or tribe, it will be implemented with administrative approval if needed. Seeding or planting will be continued until successful vegetative growth occurs.
18. The NMOCD will be notified within 60-days of closure of the below grade tank. The closure report will be filed on form C-144 and will include the following:
  - a. Proof of Closure Notice (surface owner and division)
  - b. Confirmation Sampling Analytical Results (if applicable)
  - c. Disposal Facility Name and Permit Number
  - d. Soil Backfilling and Cover Installation
  - e. Re-vegetation Application Rates and Seeding Technique
  - f. Site Reclamation (Photo Documentation)
19. The NMOCD will be notified once successful re-vegetation has been achieved.



## **January Jamboree #1 Below Grade Tank Request for Administrative Approval**

Administrative approval is hereby requested for an alternative to the fencing design for the January Jamboree #1 below grade tank.

The request for administrative approval cited above is needed to help minimize environmental impact and increase safety and protect wildlife and public health. The alternative proposed will protect fresh water, public health, safety and the environment more effectively than the design and construction specifications established by the State of New Mexico, Energy Minerals and Natural Resources Department do in rule 19.15.17.11 NMAC.

1. The proposed alternative fencing design will include T-posts spaced 10-feet apart. Hog wire / field fence 4-feet in height will be strung tightly and anchored to the top and bottom of each T-post. Small holes (3" high X 6" wide) in the hog-wire will be located at ground level with increasing larger holes (up to 7" high X 6" wide) located at the top of the fence. Anchor braces will be put at all four corners to strengthen and tighten the fence. Two strands of barbed wire or a pipe / re-bar top rail will be constructed above the hog wire. This fence design (developed over the last 30-years) has proven to be very effective controlling unauthorized access to below grade tanks.

The existing rule (19.15.17.11.D.3) would require the operator to fence the below grade tank with a four foot fence that has at least four strands of barbed wire evenly spaced in the interval between on foot and four feet above the ground level. The proposed fencing alternative would provide better security against unauthorized access to below grade tanks. The smaller holes in hog-wire (3" X 6" up to 7" X 6") is more effective at controlling unauthorized access by the public and wildlife than 4-strands of barbed wire spaced 12" apart.

The proposed fence around the below grade tank will be constructed and operated in a manner that prevents unauthorized access and shall maintain the fence in good condition to protect the public and wildlife.

The request for administrative approval cited above is needed to help minimize environmental impact, increase safety and protect wildlife and public health. The alternatives proposed will protect fresh water, public health, safety and the environment more effectively than the design and construction specifications established by the State of New Mexico, Energy Minerals and Natural Resources Department do in rule 19.15.17.11 NMAC.