

UNITED STATES
DEPARTMENT OF THE INTERIOR
BUREAU OF LAND MANAGEMENT

RECEIVED

OCT 11 2018

FORM APPROVED
OMB No. 1004-0137
Expires: July 31, 2010

SUNDRY NOTICES AND REPORTS ON WELLS
Do not use this form for proposals to drill or to re-enter an
abandoned well. Use Form 3160-3 (APD) for such proposals.

5. Lease Serial No.

JIC CONT 116

6. If Indian, Allottee or Tribe Name

JICARILLA APACHE

SUBMIT IN TRIPLICATE - Other instructions on page 2.

1. Type of Well

☐ Oil Well

☒ Gas Well

☐ Other

7. If Unit of CA/Agreement, Name and/or No.

8. Well Name and No.

Tiger 1

2. Name of Operator

Hilcorp Energy Company

9. API Well No.

30-039-20348

3a. Address

382 Road 3100, Aztec, NM 87410

3b. Phone No. (include area code)

505-599-3400

10. Field and Pool or Exploratory Area

Tapacito : Pictured Cliffs

4. Location of Well (Footage, Sec., T., R., M., or Survey Description)

Surface

Unit C (NE/NW) 790' FNL & 1450' FWL, Sec. 21, T26N, R03W

11. Country or Parish, State

Rio Arriba

New Mexico

12. CHECK THE APPROPRIATE BOX(ES) TO INDICATE NATURE OF NOTICE, REPORT OR OTHER DATA

TYPE OF SUBMISSION

☒ Notice of Intent

☐ Subsequent Report

☐ Final Abandonment Notice

TYPE OF ACTION

☐ Acidize

☐ Alter Casing

☐ Casing Repair

☐ Change Plans

☐ Convert to Injection

☐ Deepen

☐ Fracture Treat

☐ New Construction

☒ Plug and Abandon

☐ Plug Back

☐ Production (Start/Resume)

☐ Reclamation

☐ Recomplete

☐ Temporarily Abandon

☐ Water Disposal

☐ Water Shut-Off

☐ Well Integrity

☐ Other

13. Describe Proposed or Completed Operation: Clearly state all pertinent details, including estimated starting date of any proposed work and approximate duration thereof. If the proposal is to deepen directionally or recompleat horizontally, give subsurface locations and measured and true vertical depths of all pertinent markers and zones. Attach the bond under which the work will be performed or provide the Bond No. on file with BLM/BIA. Required subsequent reports must be filed within 30 days following completion of the involved operations. If the operation results in a multiple completion or recompleat in a new interval, a Form 3160-4 must be filed once Testing has been completed. Final Abandonment Notices must be filed only after all requirements, including reclamation, have been completed and the operator has determined that the site is ready for final inspection.)

Hilcorp Energy Company requests permission to P&A the subject wellbore per the attached procedure, current & proposed wellbore schematics.

**SEE ATTACHED FOR
CONDITIONS OF APPROVAL**

NMOCD

OCT 19 2018

**BLM'S APPROVAL OR ACCEPTANCE OF THIS
ACTION DOES NOT RELIEVE THE LESSEE AND
OPERATOR FROM OBTAINING ANY OTHER
AUTHORIZATION REQUIRED FOR OPERATIONS
ON FEDERAL AND INDIAN LANDS**

14. I hereby certify that the foregoing is true and correct. Name (Printed/Typed)

Etta Trujillo

Title **Operations/Regulatory Technician - Sr.**

Signature

Etta Trujillo

Date

10/10/2018

THIS SPACE FOR FEDERAL OR STATE OFFICE USE

Approved by

[Signature]

Title **PE**

Date **10/10/18**

Conditions of approval, if any, are attached. Approval of this notice does not warrant or certify that the applicant holds legal or equitable title to those rights in the subject lease which would entitle the applicant to conduct operations thereon.

Office **FEO**

Title 18 U.S.C. Section 1001 and Title 43 U.S.C. Section 1212, make it a crime for any person knowingly and willfully to make to any department or agency of the United States any false, fictitious or fraudulent statements or representations as to any matter within its jurisdiction.

NMOCD

**Hilcorp
TIGER 1
Expense - P&A**

PROCEDURE

Contact BLM, NMOCD, and Jicarilla 24 hours prior to starting cement work.

1. Hold pre-job safety meeting. Comply with all NMOCD, BLM, and HEC safety and environmental regulations.

7. PU 4 1/2" CIBP on tubing, TIH w/ tubing and CIBP and set CIBP at 3,862'.

All cement volumes use 100% excess outside pipe and 50' excess inside pipe. The stabilizing wellbore fluid will be 8.3 ppg, sufficient to balance all exposed formation pressures. All cement will be mixed at 15.6 ppg with a 1.18 cf/sk yield.

9. Plug 1 - Pictured Cliffs Perforations, Production Casing Shoe, Pictured Cliffs, Fruitland, Kirtland and Ojo Alamo Formation Tops, 3385' - 3862', 41 Sacks Cement

Mix 41 sx cement and spot a balanced plug inside the casing to cover the Pictured Cliffs Perforations, Production Casing Shoe, Pictured Cliffs, Fruitland, Kirtland and Ojo Alamo Formation Tops. POOH.

10. Plug 2 - Nacimiento Formation Top, 2176' - 2276', 51 Sacks Cement

RU WL and perforate 3 squeeze holes at 2276'. RD WL. Establish injection rate into squeeze holes. RIH with a 4-1/2" CR and set at 2226'. Mix 51 sx cement. Pump 46 sx, sting out of CR and pump 5 sx, leaving 12 total sx inside the casing to cover the Nacimiento top (50' below and 50' above plus 50' excess). POOH.

11. Plug 3 - Surface Casing Shoe, 0' - 209', 73 Sacks Cement

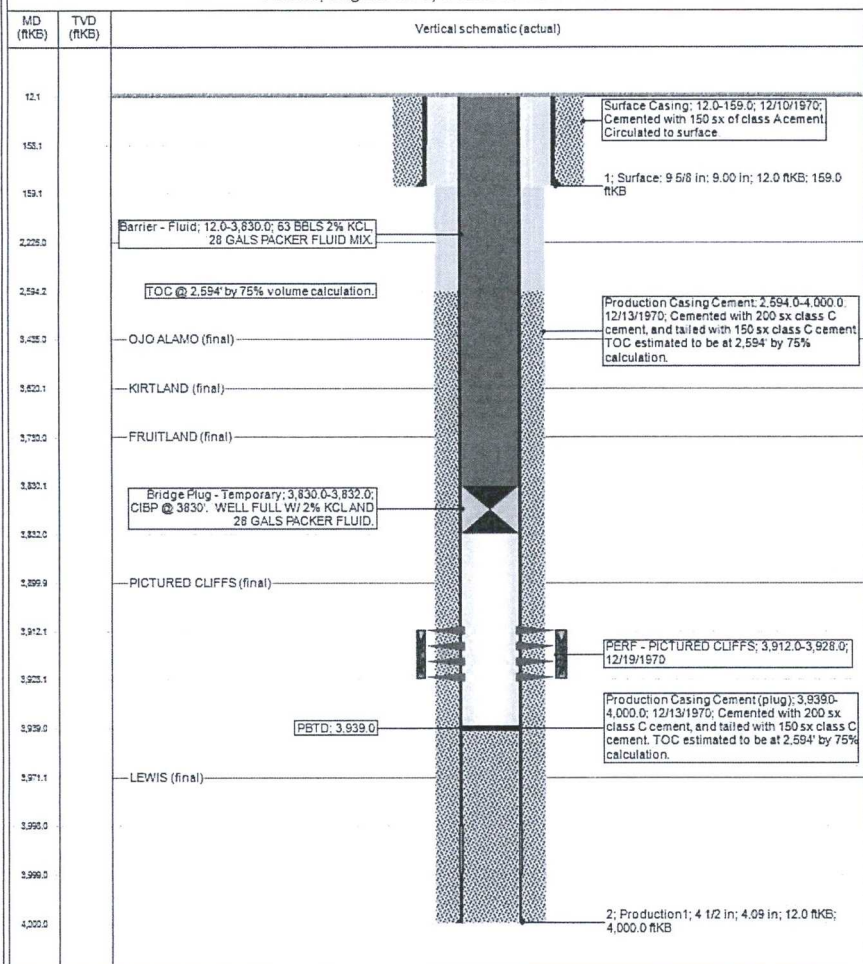
RU WL and perforate 4 squeeze holes at 209'. TOOH and RD wireline. Observe well for 30 minutes per BLM regulations. RU pump, close blind rams and establish circulation out bradenhead with water. Circulate BH clean. TIH with 4-1/2" CR and set at 159'. Mix 73 sx cement and squeeze until good cement returns to surface out BH valve. Shut BH valve and squeeze to max 200 psi. Sting out of CR and reverse circulate cement out of tubing. TOOH and LD stinger. TIH with open ended tubing to 159'. Mix 13 sx cement and pump inside plug. TOOH and LD Tubing. SI well and WOC.

12. Nipple down BOP and cut off casing below the casing flange. Install P&A marker with cement to comply with regulations. RDMO.

Well Name: TIGER #1

API / UWI	Surface Log Location	Field Name	License No.	Data Province	View Configuration Type
3003920348	021-026N-003W-C	PC		NEW MEXICO	Vertical
Ground Elevation (ft)	Casing RT Elevation (ft)	IS-Grout Distance (ft)	IS-Casing Flange Distance (ft)	IS-Tubing Flange Distance (ft)	
7,231.00	7,243.00	12.00	12.00	12.00	

Vertical, Original Hole, 9/12/2018 3:28:05 PM



Hillcorp Energy Company

Well Name: TIGER #1

Current Schematic - Version 3

API Well: 3003920348	Surface Label Location: 021-028H-003W-C	Field Name: PC	License No.	State Province: NEW MEXICO	Well Configuration Type: Vertical
Ground Elevation (ft): 7,231.00	Original Casing RT Elevation (ft): 7,243.00	HS-Ground Distance (ft): 12.00	HS-Casing Flange Distance (ft): 12.00	HS-Tubing Hanger Distance (ft): 12.00	

Vertical, Original Hole, 1/1/2020 12:04:00 AM

MD (ftKS)	TVD (ftKS)
12.1	
150.1	
159.1	
161.1	
209.0	
2,175.9	
2,225.0	
2,228.0	
2,275.9	
2,594.2	
3,354.3	
3,435.0	
3,520.1	
3,732.0	
3,851.9	
3,903.3	
3,999.9	
3,912.1	
3,925.1	
3,939.0	
3,971.1	
3,960.0	
3,999.0	
4,000.0	

Vertical schematic (actual)

Plug #3; 12.0-209.0; 1/1/2020; 13 sacks of cement

Surface Casing; 12.0-159.0; 12/10/1970; Cemented with 150 sx of class A cement; Circulated to surface

Plug #3 Squeeze; 12.0-209.0; 1/1/2020; 60 sacks of cement

Perf: 209.0; 1/1/2020

Plug #2; 2,175.0-2,276.0; 1/1/2020; 12 sacks of cement

Plug #2 Squeeze; 2,175.0-2,276.0; 1/1/2020; 39 sacks of cement

Perf: 2,276.0; 1/1/2020

Production Casing Cement; 2,594.0-4,000.0; 12/13/1970; Cemented with 200 sx class C cement, and tailed with 150 sx class C cement; TOC estimated to be at 2,594' by 75% calculation.

Plug #1; 3,395.0-3,862.0; 1/1/2020; 45 sacks of cement

PERF - PICTURED CLIFFS; 3,912.0-3,928.0; 12/19/1970

Production Casing Cement (plug); 3,939.0-4,000.0; 12/13/1970; Cemented with 200 sx class C cement, and tailed with 150 sx class C cement; TOC estimated to be at 2,594' by 75% calculation.

www.peloton.com

Page 1/1

Report Printed: 10/9/2018