

Submit 1 Copy To Appropriate District Office
District I - (575) 393-6161
1625 N. French Dr., Hobbs, NM 88240
District II - (575) 748-1283
811 S. First St., Artesia, NM 88210
District III - (505) 334-6178
1000 Rio Brazos Rd., Aztec, NM 87410
District IV - (505) 476-3460
1220 S. St. Francis Dr., Santa Fe, NM 87505

State of New Mexico
Energy, Minerals and Natural Resources

Form C-103
Revised July 18, 2013

OIL CONSERVATION DIVISION
1220 South St. Francis Dr.
Santa Fe, NM 87505

WELL API NO. 30-039-06767
5. Indicate Type of Lease STATE <input checked="" type="checkbox"/> FEE <input type="checkbox"/>
6. State Oil & Gas Lease No. E-290-3
7. Lease Name or Unit Agreement Name Johnston A Com E
8. Well Number 12
9. OGRID Number 372171
10. Pool name or Wildcat Blanco Mesaverde/Basin Dakota

SUNDRY NOTICES AND REPORTS ON WELLS
(DO NOT USE THIS FORM FOR PROPOSALS TO DRILL OR TO DEEPEN OR PLUG BACK TO A DIFFERENT RESERVOIR. USE "APPLICATION FOR PERMIT" (FORM C-101) FOR SUCH PROPOSALS.)

1. Type of Well: Oil Well ☐ Gas Well ☒ Other

2. Name of Operator
Hilcorp Energy Company

3. Address of Operator
382 Road 3100, Aztec, NM 87410

4. Well Location

Unit Letter M : 800 feet from the South line and 890 feet from the West line

Section 36 Township 27N Range 6W NMPM County Rio Arriba

11. Elevation (Show whether DR, RKB, RT, GR, etc.)
6734'

12. Check Appropriate Box to Indicate Nature of Notice, Report or Other Data

NOTICE OF INTENTION TO:

PERFORM REMEDIAL WORK ☐ PLUG AND ABANDON ☐
TEMPORARILY ABANDON ☐ CHANGE PLANS ☐
PULL OR ALTER CASING ☐ MULTIPLE COMPL ☐
DOWNHOLE COMMINGLE ☐
CLOSED-LOOP SYSTEM ☐
OTHER: ☒ RECOMPLETE

SUBSEQUENT REPORT OF:

REMEDIAL WORK ☐ ALTERING CASING ☐
COMMENCE DRILLING OPNS. ☐ P AND A ☐
CASING/CEMENT JOB ☐
OTHER: ☐

13. Describe proposed or completed operations. (Clearly state all pertinent details, and give pertinent dates, including estimated date of starting any proposed work). SEE RULE 19.15.7.14 NMAC. For Multiple Completions: Attach wellbore diagram of proposed completion or recompletion.

Hilcorp Energy Company plans to recomplete the subject well in the Mesaverde formation and downhole commingle with the existing Dakota. Attached is the MV C102, recomplete procedure & wellbore schematic. The DHC application will be submitted and approved prior to commingling. A Closed Loop system will be utilized.

NMOC

NOV 19 2018

DISTRICT III

See Attached conditions of approval

Spud Date:

Rig Release Date:

I hereby certify that the information above is true and complete to the best of my knowledge and belief.

SIGNATURE Etta Trujillo TITLE Operations/Regulatory Technician DATE 11/14/2018

Type or print name Etta Trujillo E-mail address: ettrujillo@hilcorp.com PHONE: (505) 324-5161

For State Use Only

APPROVED BY: Bob Bell TITLE I & E Supervisor DATE 11/29/18
Conditions of Approval (if any): See attached AV

District I

1625 N. French Dr., Hobbs, NM 88240
Phone:(575) 393-6161 Fax:(575) 393-0720

District II

811 S. First St., Artesia, NM 88210
Phone:(575) 748-1283 Fax:(575) 748-9720

District III

1000 Rio Brazos Rd., Aztec, NM 87410
Phone:(505) 334-6178 Fax:(505) 334-6170

District IV

1220 S. St Francis Dr., Santa Fe, NM 87505
Phone:(505) 476-3470 Fax:(505) 476-3462

State of New Mexico
Energy, Minerals and Natural
Resources
Oil Conservation Division
1220 S. St Francis Dr.
Santa Fe, NM 87505

Form C-102
August 1, 2011

Permit 259870

WELL LOCATION AND ACREAGE DEDICATION PLAT

1. API Number 30-039-06767	2. Pool Code 72319	3. Pool Name BLANCO-MESAVERDE (PRORATED GAS)
4. Property Code 319183	5. Property Name JOHNSTON A COM E	6. Well No. 012
7. OGRID No. 372171	8. Operator Name HILCORP ENERGY COMPANY	9. Elevation 6734

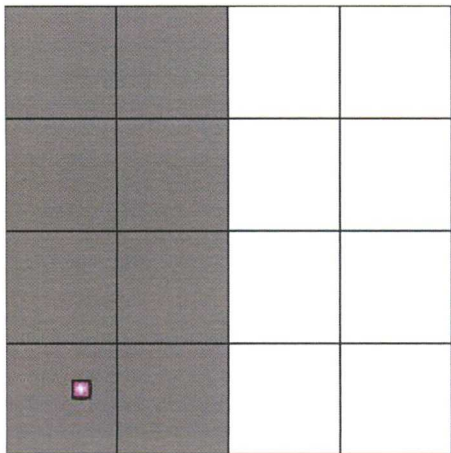
10. Surface Location

UL - Lot M	Section 36	Township 27N	Range 06W	Lot Idn	Feet From 800	N/S Line S	Feet From 890	E/W Line W	County RIO ARRIBA
---------------	---------------	-----------------	--------------	---------	------------------	---------------	------------------	---------------	----------------------

11. Bottom Hole Location If Different From Surface

UL - Lot	Section	Township	Range	Lot Idn	Feet From	N/S Line	Feet From	E/W Line	County
12. Dedicated Acres 320.00 W/2	13. Joint or Infill			14. Consolidation Code				15. Order No.	

NO ALLOWABLE WILL BE ASSIGNED TO THIS COMPLETION UNTIL ALL INTERESTS HAVE BEEN CONSOLIDATED OR A NON-STANDARD UNIT HAS BEEN APPROVED BY THE DIVISION

	<p style="text-align: center;">OPERATOR CERTIFICATION</p> <p><i>I hereby certify that the information contained herein is true and complete to the best of my knowledge and belief, and that this organization either owns a working interest or unleased mineral interest in the land including the proposed bottom hole location(s) or has a right to drill this well at this location pursuant to a contract with an owner of such a mineral or working interest, or to a voluntary pooling agreement or a compulsory pooling order heretofore entered by the division.</i></p> <p>E-Signed By: <i>Etta Trujillo</i> Title: Operations/Regulatory Tech Sr. Date: 11/14/2018</p> <hr/> <p style="text-align: center;">SURVEYOR CERTIFICATION</p> <p><i>I hereby certify that the well location shown on this plat was plotted from field notes of actual surveys made by me or under my supervision, and that the same is true and correct to the best of my belief.</i></p> <p>Surveyed By: David Kilven Date of Survey: 9/18/1964 Certificate Number: 1760</p>
--	--



HILCORP ENERGY COMPANY
Johnston A Com E 12
MESA VERDE RECOMPLETION SUNDRY

JOB PROCEDURES

1. MIRU service rig and associated equipment; test BOP.
2. TOOH with 2 3/8" tubing set at 7,689'.
3. Set a 4-1/2" cast iron bridge plug at +/- 7,477' to isolate the Dakota.
4. Load the hole and run a CBL from the CIBP to surface. Squeeze as needed based on the CBL.
5. Set a 4-1/2" cast iron bridge plug at +/- 5,750' to isolate the Stage Tool.
6. Perforate the Mesa Verde (Top Perforation @ 4,919'; Bottom Perforation @ 5,745').
7. RIH with a packer and 2-7/8" Frac string, setting depth @ 4,900'. NU Test Frac stack and frac string.
8. Frac the Mesa Verde
9. Nipple down frac stack, nipple up BOP and test.
10. TOOH 2-7/8" Frac String.
11. TIH with a mill.
12. Clean out to Dakota isolation plug.
13. Drill out Dakota isolation plug and cleanout to PBTD of 7,797'. TOOH.
14. TIH and land production tubing at 7,689'.



HILCORP ENERGY COMPANY
Johnston A Com E 12
MESA VERDE RECOMPLETION SUNDRY

Johnston A Com E 12 - CURRENT WELLBORE SCHEMATIC

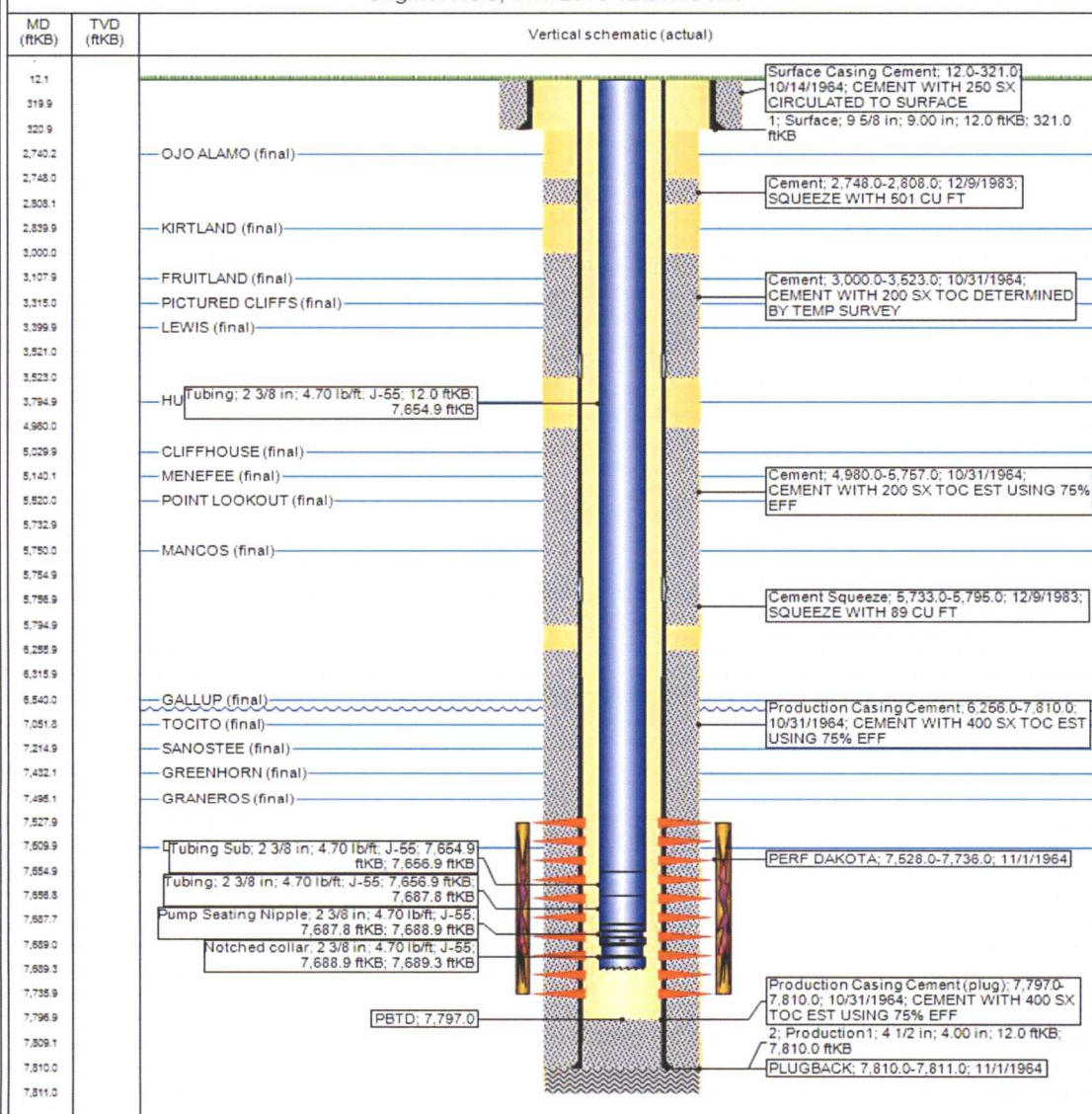


Current Schematic - Version 3

Well Name: JOHNSTON A COM E #12

API / UWI 3003906767	Surface Legal Location 036-027N-006W-M	Field Name BASIN DAKOTA (PRORATED G #0068	Route 1300	State/Province NEW MEXICO	Well Configuration Type
Ground Elevation (ft) 6,734.00	Original KBRT Elevation (ft) 6,746.00	KB-Ground Distance (ft) 12.00	KB-Casing Flange Distance (ft)	KB-Tubing Hanger Distance (ft)	

Original Hole, 11/7/2018 12:37:10 PM



State of New Mexico
Energy, Minerals and Natural Resources Department

Susana Martinez
Governor

Ken McQueen
Cabinet Secretary

Matthias Sayer
Deputy Cabinet Secretary

Heather Riley, Division Director
Oil Conservation Division



**New Mexico Oil Conservation Division
Conditions of Approval**

Well information:

Hilcorp, JOHNSTON A COM E #012, API# 30-039-06767

Application Type:

☒ **Recomplete/DHC** (For hydraulic fracturing operations review EPA Underground injection control Guidance #84; Submit Gas Capture Plan form prior to spudding or initiating recompletion operations)

Conditions of Approval:

- Notify the OCD 24hrs prior to beginning operations.
- Submit the cement bond log (CBL) to the OCD for review and approval prior to any remediation or perforating.
- If needed, submit proposed remediation plan to the OCD for review and approval prior to starting remediation.