

UNITED STATES
DEPARTMENT OF THE INTERIOR
BUREAU OF LAND MANAGEMENT

SUNDRY NOTICES AND REPORTS ON WELLS
Do not use this form for proposals to drill or to re-enter an abandoned well. Use form 3160-3 (APD) for such proposals.

FORM APPROVED
OMB NO. 1004-0137
Expires: January 31, 2018

5. Lease Serial No.
1420603779

6. If Indian, Allottee or Tribe Name
EASTERN NAVAJO

7. If Unit or CA/Agreement, Name and/or No.
SWI4051

8. Well Name and No.
NAVAJO ALLOTTED GAS COM A 1

9. API Well No.
30-045-13252-00-S1

10. Field and Pool or Exploratory Area
BLANCO MESAVERDE

11. County or Parish, State
SAN JUAN COUNTY, NM

SUBMIT IN TRIPLICATE - Other instructions on page 2

1. Type of Well

☐ Oil Well ☒ Gas Well ☐ Other

2. Name of Operator
BP AMERICA PRODUCTION CO

Contact: PATTI CAMPBELL
E-Mail: patti.campbell@bpx.com

3a. Address
1199 MAIN AVE SUITE 101
DURANGO, CO 81301

3b. Phone No. (include area code)
Ph: 970-712-5997

4. Location of Well (Footage, Sec., T., R., M., or Survey Description)

Sec 25 T28N R9W NWNE 0990FNL 1700FEL
36.637560 N Lat, 107.736150 W Lon

12. CHECK THE APPROPRIATE BOX(ES) TO INDICATE NATURE OF NOTICE, REPORT, OR OTHER DATA

TYPE OF SUBMISSION	TYPE OF ACTION			
<input type="checkbox"/> Notice of Intent	<input type="checkbox"/> Acidize	<input type="checkbox"/> Deepen	<input type="checkbox"/> Production (Start/Resume)	<input type="checkbox"/> Water Shut-Off
<input checked="" type="checkbox"/> Subsequent Report	<input type="checkbox"/> Alter Casing	<input type="checkbox"/> Hydraulic Fracturing	<input type="checkbox"/> Reclamation	<input type="checkbox"/> Well Integrity
<input type="checkbox"/> Final Abandonment Notice	<input type="checkbox"/> Casing Repair	<input type="checkbox"/> New Construction	<input type="checkbox"/> Recomplete	<input type="checkbox"/> Other
	<input type="checkbox"/> Change Plans	<input checked="" type="checkbox"/> Plug and Abandon	<input type="checkbox"/> Temporarily Abandon	
	<input type="checkbox"/> Convert to Injection	<input type="checkbox"/> Plug Back	<input type="checkbox"/> Water Disposal	

13. Describe Proposed or Completed Operation: Clearly state all pertinent details, including estimated starting date of any proposed work and approximate duration thereof. If the proposal is to deepen directionally or recompleat horizontally, give subsurface locations and measured and true vertical depths of all pertinent markers and zones. Attach the Bond under which the work will be performed or provide the Bond No. on file with BLM/BIA. Required subsequent reports must be filed within 30 days following completion of the involved operations. If the operation results in a multiple completion or recompletion in a new interval, a Form 3160-4 must be filed once testing has been completed. Final Abandonment Notices must be filed only after all requirements, including reclamation, have been completed and the operator has determined that the site is ready for final inspection.

The subject well was plugged and abandoned on 10/18/18 per the attached Final P&A report and Plugged Well Diagram. CBLs are attached.

NMOCD

DEC 11 2018

DISTRICT III

14. I hereby certify that the foregoing is true and correct.

Electronic Submission #440794 verified by the BLM Well Information System
For BP AMERICA PRODUCTION CO, sent to the Farmington
Committed to AFMSS for processing by JACK SAVAGE on 11/09/2018 (19JWS0076SE)

Name (Printed/Typed) PATTI CAMPBELL

Title REGULATORY ANALYST

Signature (Electronic Submission)

Date 10/23/2018

THIS SPACE FOR FEDERAL OR STATE OFFICE USE

Approved By

ACCEPTED

JACK SAVAGE
Title PETROLEUM ENGINEER

Date 11/09/2018

Conditions of approval, if any, are attached. Approval of this notice does not warrant or certify that the applicant holds legal or equitable title to those rights in the subject lease which would entitle the applicant to conduct operations thereon.

Office Farmington

Title 18 U.S.C. Section 1001 and Title 43 U.S.C. Section 1212, make it a crime for any person knowingly and willfully to make to any department or agency of the United States any false, fictitious or fraudulent statements or representations as to any matter within its jurisdiction.

(Instructions on page 2)

**** BLM REVISED ** BLM REVISED ** BLM REVISED ** BLM REVISED ** BLM REVISED ****

NMOCD

Final Abandonment Report

NAVAJO ALLOTTED GC A 001

API # 30-045-13252

Unit B, Sec. 25, T28N, R09W



Plug Summary

Plug #1	10/5/18	Mesa Verde Perforation – Set cement retainer at 4332', pumped 18 sx class G cement (1.15 cf/sk 15.8 ppg) from CR at 4332' to 4232'.
Plug #2	10/5/18	Mesa Verde top – Pumped 18 sx class G cement (1.15 cf/sk 15.8 ppg) to spot balanced plug from 3827'-3727'
Plug #3	10/5/18	Chacra top – Pumped 18 sx class G cement (1.15 cf/sk 15.8 ppg) to spot balanced plug from 3128'-3028'
Plug #4	10/5/18	Pictured Cliffs top – Pumped 18 sx class G cement (1.15 cf/sk 15.8 ppg) to spot balanced plug from 2161'-2061'
Plug #5	10/10/18	Casing Stub & Fruitland top – Pumped 67 sx class G cement (1.15 cf/sk 15.8 ppg) from csg stub at 1904'-1605'. Unable to enter CSG stub to pump from planned 1950'; deviation approved by regulators.
Plug #6	10/11/18	Kirtland & Ojo Alamo tops – Pumped 122 sx class G cement (1.15 cf/sk 15.8 ppg) from 1606'-1087' to extend Plug #5 upward.
Plug #7	10/15/18	Pumped 12 sx class G cement (1.15 cf/sk 15.8 ppg) from 910'-860' as abandonment plug on top of cement retainer due to insufficient injectivity for circulation.
Plug #8a	10/16/18	Outside plug from 500'-400' to kill water influx. Pumped 20 sx class G cement (1.15 cf/sk 15.8 ppg) through cement retainer at 450' and out holes at 500'.
Plug #8b	10/17/18	Inside plug from 450'-500' on top of cement retainer. Pumped 12 sx class G cement (1.15 cf/sk 15.8 ppg).
Plug #9	10/17/18	Surface plug – Perforated at 279' and circulated 90 sx class G cement (1.15 cf/sk 15.8 ppg) through retainer at 265' to surface outside intermediate casing. Unstung and pumped 89 sx class G cement (1.15 cf/sk 15.8 ppg) until clean returns inside 7-5/8". Topped off to surface after cutting off wellhead (10/18/18).

Work Summary

Date	24-Hour Summary
10/2/2018	MIRUSU NDWH NU BOPE & TEST; POH & TALLY OUT PRODUCTION TBG
10/3/2018	E LINE SET CMT RET; LOAD & TEST CSG TO 500 PSI (PASS); RUN CBL & NOISE LOG
10/4/2018	WAIT ON PROCEDURE APPROVAL; RIG PUMP REPAIR; RIH WITH TBG, ID WELLHEAD
10/5/2018	SET BALANCED PLUGS 1-4, ND 7-1/16 BOP, NU 11" BOP.
10/8/2018	CHEM CUT 5.5" AT 1900', CIRC HOLE W/ 50 BBLS FRESH WATER
10/9/2018	CIRCULATE KILL FLUID, REMOVE 5-1/2" CASING SLIPS AND BUSHING, WORK CASING, MIRU E-LINE, FREE POINT AND CUT CASING, PULL 1 JT CASING AND SECURE WELL AND LOC, HAND WELL TO DRY WATCH CREW.
10/10/2018	PULL G-1/2" CASING, RUN CBL AND NOISE LOGS, SET BALANCE PLUG 1904'-1605', POH TUBING, SECURE WELL AND EQUIPMENT. SDFD.
10/11/2018	PRESSURE TEST 7 5/8" CASING (FAILED). TAG PLUG #5, RUN PACKER AND TEST CASING AGAIN (FAILED). PUMP PLUG #6, WOC, TAG PLUG 6, TEST CASING (FAILED), SECURE WELL
10/12/2018	HUNT HOLES, CONFIRMED ABOVE 390' & BELOW 265'. PERFORATE AT 920', SET CEMENT RETAINER AT 910', ATTEMPT TO CIRCULATE
10/15/2018	SPOT 12 SX CEMENT ON TOP OF RETAINER AT 910'. SHOOT SQZ HOLES AT

	500'. PUMPED DYE AND CHASED WITH 60 BBLS WATER. NO TRACE OF DYE. PUMPED 30 BBLS GEL. UNSET PKR. POH.
10/16/2018	SET PACKER AT 450', WAIT ON GEL, PUMP GEL, PUMP 2 ND GEL TREATMENT, POOH PACKER, RIH CMENT RETAINER AND SET AT 450', SPOT 100' OUTSIDE PLUG FROM 500'-400'.
10/17/2018	RIH AND PUMP, ATTEMPTING TO CIRCULATE UP BH (NO CIRCULATION). SET CEMENT PLUG FROM 450-400' INSIDE 7-5/8" CSG. RUN CBL FROM 400'-SURFACE. PERF AT 279', SET CEMENT RETAINER AT 265' AND CIRCUALTE OUTSIDE & INSIDE PLUG TO SURFACE. CLEAN UP, SDFD.
10/18/2018	CUT OFF WELLHEAD, WELD MARKER TO CASING, TOP OFF CEMENT INSIDE BOTH STRINGS AND SPOT REMAINDER IN CELLAR. RDMO.

Final Wellbore Diagram



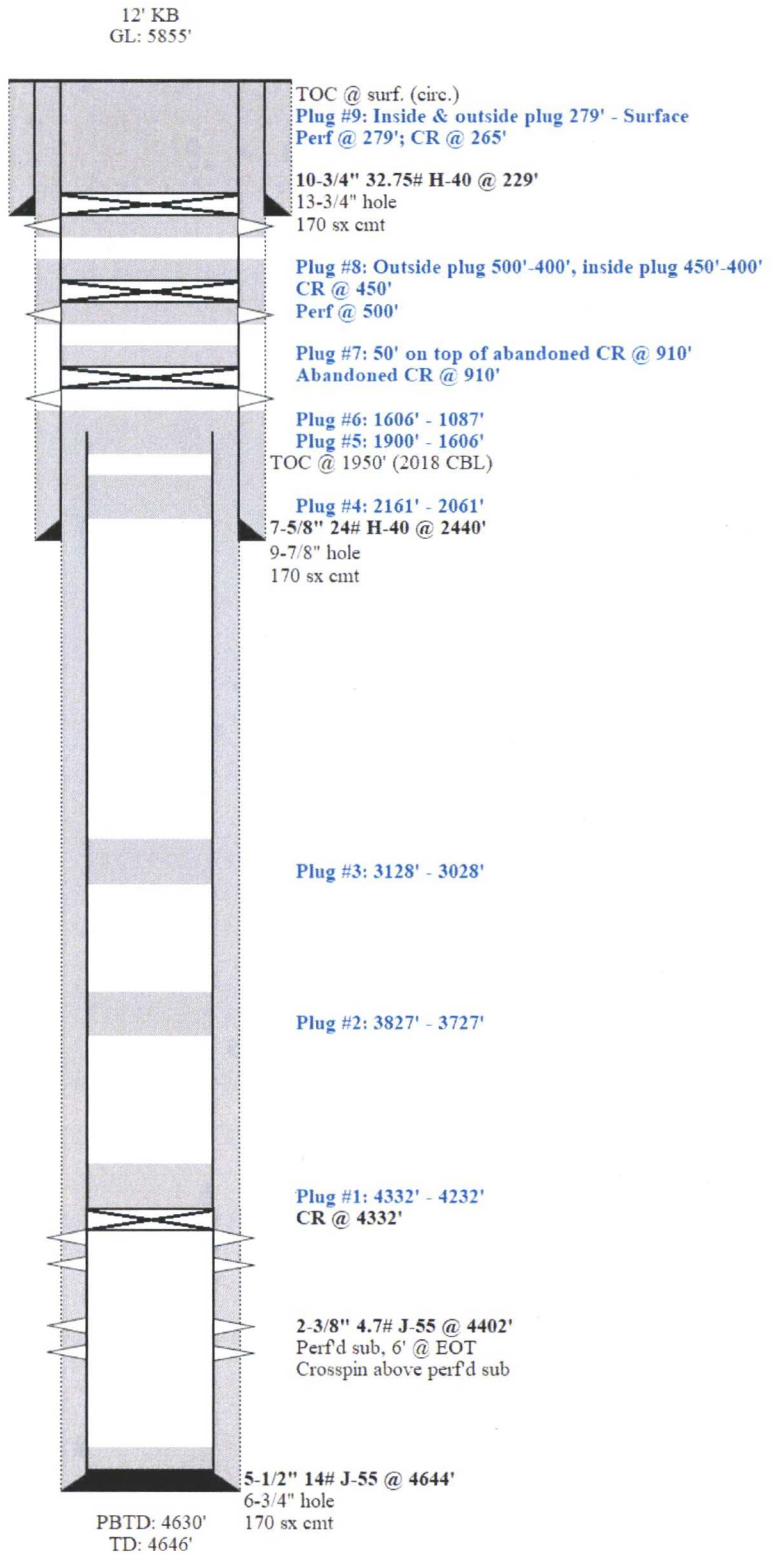
Navajo Allotted GC A 001
MV
API #: 3004513252
Unit B - Sec. 25 - T28N - R09W
San Juan, NM

Formation Tops

Nacimiento	Surface
Ojo Alamo	1150
Kirtland	1330
Fruitland	1800
Pictured Cliffs	2111
Lewis	2280
Chacra	3078
Cliff House	3778
Menefee	3813
Point Lookout	4355

Mesa Verde Perforations

4382' - 4563' 2 spf
Frac'd w/ 65k# 20/40 & water



Powell, Brandon, EMNRD

From: Andrew Carlson <ANDREW.CARLSON@BPX.COM>
Sent: Thursday, October 4, 2018 10:37 AM
To: Powell, Brandon, EMNRD; Savage, Jack
Cc: Eric Zoesch; Christopher Sandoz; Getulio Acosta Vasquez
Subject: RE: [EXTERNAL] RE: [EXT] RE: BP America - Navajo Allotted Gas Com A 1 - 30-045-13252 - B-25-28N-09W - San Juan County - Update

Brandon, Jack,

Thanks for your quick response this morning. We will definitely confer with you all if the Ojo plug fails to shut off the water source. Is it acceptable to both of you if we combine the plug for the 5-1/2" casing stub and the Fruitland top? It would be a single balanced plug from 1950' – 1750'.

I'll make the necessary modifications to the procedure and we'll get started today. We'll keep you both informed.

Thanks again,

Andrew Carlson

Production Engineer
BP America | West BU | SJS Areas 1 & 4
Office: +1 281.810.1535
Mobile: +1 678.982.7101

From: Powell, Brandon, EMNRD <Brandon.Powell@state.nm.us>
Sent: Thursday, October 4, 2018 10:31 AM
To: Savage, Jack <jwsavage@blm.gov>; Andrew Carlson <ANDREW.CARLSON@BPX.COM>
Cc: Eric Zoesch <Eric.Zoesch@BPX.COM>; Christopher Sandoz <CHRISTOPHER.SANDOZ@BPX.COM>; Getulio Acosta Vasquez <GETULIO.A@BPX.COM>
Subject: RE: [EXTERNAL] RE: [EXT] RE: BP America - Navajo Allotted Gas Com A 1 - 30-045-13252 - B-25-28N-09W - San Juan County - Update

Andrew,

We concur with the BLM's approval and conditions. The only additional condition we have is if the Ojo plug fails to stop the water flow you will need to get with the agencies prior to proceeding as this plug could end up being water cut due to the water flow.

Thank You

Brandon Powell

Office: (505) 334-6178 ext. 116

"He who wishes to gain knowledge is wiser than he who thinks he has knowledge (unknown)"

From: Savage, Jack <jwsavage@blm.gov>
Sent: Thursday, October 4, 2018 9:12 AM
To: Andrew Carlson <ANDREW.CARLSON@bpx.com>
Cc: Eric.Zoesch@bpx.com; Powell, Brandon, EMNRD <Brandon.Powell@state.nm.us>; Christopher Sandoz <CHRISTOPHER.SANDOZ@bpx.com>; Getulio.A@bpx.com
Subject: Re: [EXTERNAL] RE: [EXT] RE: BP America - Navajo Allotted Gas Com A 1 - 30-045-13252 - B-25-28N-09W - San Juan County - Update

Andrew,

Thanks for the update. There are a few changes that have been made to your plug depths based on our tops, and I have added a Chacra plug as well. I have attached the COA and the geo report as you requested. Please let me know if you have any questions or concerns regarding the changes to your procedure.

Thanks,

On Thu, Oct 4, 2018 at 8:09 AM Andrew Carlson <ANDREW.CARLSON@bpx.com> wrote:

Brandon, Jack,

Based on the logs and Eric's comments below, we would like to propose the following changes to the procedure (attached). The estimated TOC is ~1950' from the CBL, and flow suggested from the noise log was present from 1250' to surface with restrictions/channeling at approximately 800', 700', 550', and 100'. We do not believe flow is present between the production and intermediate casings. A cement retainer was set at 4332' yesterday.

1. Set MV perforation plug as planned in original procedure (attached).
2. **Plug #2:** Spot balanced plug to isolate the Mesa Verde top. Mix and pump 18 sx class G cement (1.15 cf/sk, 15.8 ppg) from 3827' – 3727'.
3. **Plug #3:** Spot balanced plug to isolate the Pictured Cliffs top. Mix and pump 18 sx class G cement (1.15 cf/sk, 15.8 ppg) from 2232' – 2132'.
4. Cut 5-1/2" production casing at ~1900'. Pull production casing from 1900' to surface.
5. **Plug #4:** Spot balanced plug to isolate the production casing stub. Mix and pump 18 sx class G cement (1.15 cf/sk, 15.8 ppg) from 1950' – 1850'.
6. Run CBL, temperature, and noise logs inside 7-5/8" intermediate casing from 1850' to surface. Continue with originally outlined procedure.

Please let me know if you all approve these changes (as well as the original procedure) – I'll give you a call shortly to discuss.

Thanks,

Andrew Carlson

Production Engineer

BP America | West BU | SJS Areas 1 & 4

Office: +1 281.810.1535

Mobile: +1 678.982.7101

From: Eric Zoesch

Sent: Wednesday, October 3, 2018 4:59 PM

To: Savage, Jack <jwsavage@blm.gov>; Brandon Powell (Brandon.Powell@state.nm.us)
<Brandon.Powell@state.nm.us>

Cc: Christopher Sandoz <CHRISTOPHER.SANDOZ@BPX.COM>; Andrew Carlson <ANDREW.CARLSON@BPX.COM>

Subject: RE: [EXTERNAL] RE: [EXT] RE: BP America - Navajo Allotted Gas Com A 1 - 30-045-13252 - B-25-28N-09W - San Juan County - Update

Here are the logs. Inflow was interpreted to be 1250', around Ojo Alamo depth. Pressure test also passed 30 minutes; starting pressure was 525 psi and ending was 580 psi. Increase due to thermal effects.

Please contact Andrew with any questions or feedback. Will wait to begin P&A until the procedure is finalized by you.

Eric Zoesch

Production Engineer

BP America | L48 | West BU | SJS Area 2

Mobile: +1 406.270.9837

From: Eric Zoesch

Sent: Wednesday, October 3, 2018 3:27 PM

To: 'Savage, Jack' <jwsavage@blm.gov>; 'Brandon Powell' (Brandon.Powell@state.nm.us)
<Brandon.Powell@state.nm.us>

Cc: Christopher Sandoz <CHRISTOPHER.SANDOZ@BPX.COM>; Andrew Carlson (andrew.carlson@bpx.com)
<andrew.carlson@bpx.com>

Subject: RE: [EXTERNAL] RE: [EXT] RE: BP America - Navajo Allotted Gas Com A 1 - 30-045-13252 - B-25-28N-09W - San Juan County - Update

Good Afternoon,

I wanted to let you know that I will be out of the office the rest of the week, so Andrew Carlson (cc'ed) will be handing the engineering side of things for this P&A while I'm gone. Please send your feedback on the procedure to both of us, and he will likely be the one sending you logs etc.

Logging is ongoing this afternoon.

Regards,

Eric Zoesch

Production Engineer

BP America | L48 | West BU | SJS Area 2

Mobile: +1 406.270.9837

From: Eric Zoesch

Sent: Wednesday, October 3, 2018 10:32 AM

To: 'Savage, Jack' <jwsavage@blm.gov>; 'Brandon Powell (Brandon.Powell@state.nm.us)' <Brandon.Powell@state.nm.us>

Cc: Christopher Sandoz <CHRISTOPHER.SANDOZ@BPX.COM>

Subject: RE: [EXTERNAL] RE: [EXT] RE: BP America - Navajo Allotted Gas Com A 1 - 30-045-13252 - B-25-28N-09W - San Juan County - Update

Here is the P&A procedure with proposed schematic. We will send you logs as they are obtained & change the cementing strategy as needed. Please advise of any differences in plug depths as you see fit based on your interpretation of formation tops in the well.

Currently we are circulating the hole with water and preparing to pressure test the 5-1/2" casing (step #3 in procedure). After that we will run logs.

Jack just advised me to proceed with the pressure test when ready, regardless of BLM rep presence.

Eric Zoesch

Production Engineer

BP America | L48 | West BU | SJS Area 2

Mobile: +1 406.270.9837

October 03, 2018

NMOCD & BLM

BP would like to permanently abandon the NAVAJO ALLOTTED GC A 001 - MV as per the proposed procedure and wellbore sketches.

PLUG AND ABANDONMENT PROCEDURE

Navajo Allotted GC A 001
990' FNL and 1700' FEL, Section 25, T28N, R09W
San Juan County, New Mexico / API 30-045-132-5200
Lat: N 36.6375999 / Long: W -107.7366714

Note: All cement volumes use 100% excess outside pipe and 50% excess inside. The stabilizing wellbore fluid will be 8.3 ppg water, sufficient to balance all exposed formation pressures. All cement will be Class G, mixed at 15.8 ppg with a 1.15 cf/sx yield.

1. Install and test rig anchors. Comply with all NMOCD, BLM, and Operator safety rules and regulations. Prepare a lined waste fluid pit. Conduct safety meeting for all personnel on location. MOL and RU daylight pulling unit. Record casing, tubing, intermediate, and bradenhead pressures. NU relief line and blow down well; kill well with water as necessary. ND wellhead and NU BOP. Function test BOP.

2. Pull

Rods: ☐Yes ☒No ☐Unknown

Tubing: ☒Yes ☐No ☐Unknown Size, Length: 2.375", 4402'

Packer: ☐Yes ☒No ☐Unknown Type: N/A

If this well has rods or a packer, then modify the work sequence in step #2 as appropriate.

NOTE: The BLM requires a CBL to be run on all wells where the cement did not circulate to surface or a CBL was not previously run. This procedure is prepared with the understanding that it may be modified based on the TOC from the CBLs.

3. Set cement retainer at 4332'. Pressure test 5-1/2" production casing to 500 psi for 30 minutes.
4. Run CBL, temperature, & noise logs inside 5-1/2" production casing from 4332' to surface while maintaining active bleed from BH to pit. Submit copies of logs to the NMOCD and BLM.
5. **Plug #1 (Above MV perforations, 4232' – 4332')**: Mix 18 sx Class G cement and spot on top of cement retainer at 4332'.
6. Perforate 5-1/2" production casing at 3835' (assuming TOC at 3800' based on 1957 temperature survey is confirmed with CBL).
7. **Plug #2 (Mesa Verde top, 3727' – 3827')**: RIH with cement retainer and set at 3827'. Mix and pump 33 sx Class G cement; squeeze 15 sx Class G Cement into CR and spot remainder as cement plug inside casing from 3727' – 3827'.
8. Cut and pull 5-1/2" production casing at ~2390' (as indicated by CCL).

9. **Plug #3 (5-1/2" production casing stub, 2340' – 2440')**: Mix and pump 36 sx Class G cement across top of the 5-1/2" production casing from 2340' – 2440'.
10. Run CBL, temperature, & noise logs inside 7-5/8" intermediate casing from the top of Plug #3 to surface while maintaining an active bleed from BH to pit. Submit copies of logs to the NMOCD and BLM.
11. **Plug #4 (Pictured Cliffs top, 2132' – 2232')**: Mix 35 sx Class G cement and spot balanced plug inside 7-5/8" intermediate casing from 2132' – 2232'.
12. **Plug #5 (Fruitland Coal top, 1630' – 1730')**: Mix 35 sx Class G cement and spot balanced plug inside 7-5/8" intermediate casing from 1630' – 1730'.
13. **Plug #6 (Ojo Alamo top, 1080' – 1180')**: Mix 35 sx Class G cement and spot balanced plug inside casing 7-5/8" intermediate casing from 1080' – 1180'.
14. Perforate 7-5/8" intermediate casing at 279'.
15. RIH with cement retainer and set at 270'. Mix and pump 200 sx Class G cement and circulate cement to surface. Top off inside 7-5/8" intermediate casing to surface.
16. ND cementing valves and cut off wellhead. Fill annuli with cement as necessary. Install P&A marker in compliance with regulations. Record GPS coordinate for P&A marker on tower report. Photograph P&A marker in place. RD, MOL, and cut off anchors. Restore location per BLM stipulations.

NAVAJO ALLOTTED GC A 001-MV

Reservoir / Permanent

TOC: Surface (circ.)

Surface Casing Data

13-3/4" Hole

10-3/4", 32.75#, H-40 ST&C @ 229'

170 sxs neat cmt

TOC: Unknown (Could not find in wellfile)

Intermediate Casing Data

9-7/8" Hole

7-5/8", 24#, H-40 ST&C @ 2440'

170 sxs cmt

Formation Tops

PC - 2182

MENF - 3813

CLFH - 3777

PNLK - 4357

MNCS - 4568

TOC: 3800' (temp survey 5/19/57)

Mesaverde Completion

4382'-4563' gross (2spf, 202 holes)

frac w/ 65k# 20/40 snd & water

Production Casing Data

6-3/4" Hole

5-1/2", 14#, J-55 ST&C @ 4644'

120 sxs w/ 1# Tuffplug, tail w/ 50 sxs neat cmt

Equipment / Temporary

Tubing Details

2-3/8", 4.7#, J-55 8rd @ 4402'

crosspin collar above 6' perf nipple @ EOT

Nipple Data

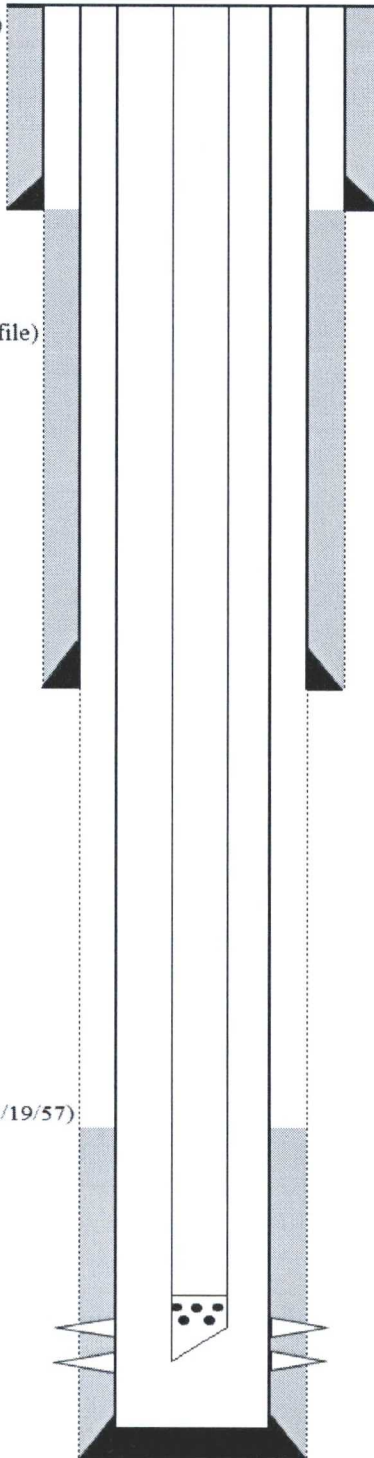
plunger stop @ ??

End of Tubing

4402'

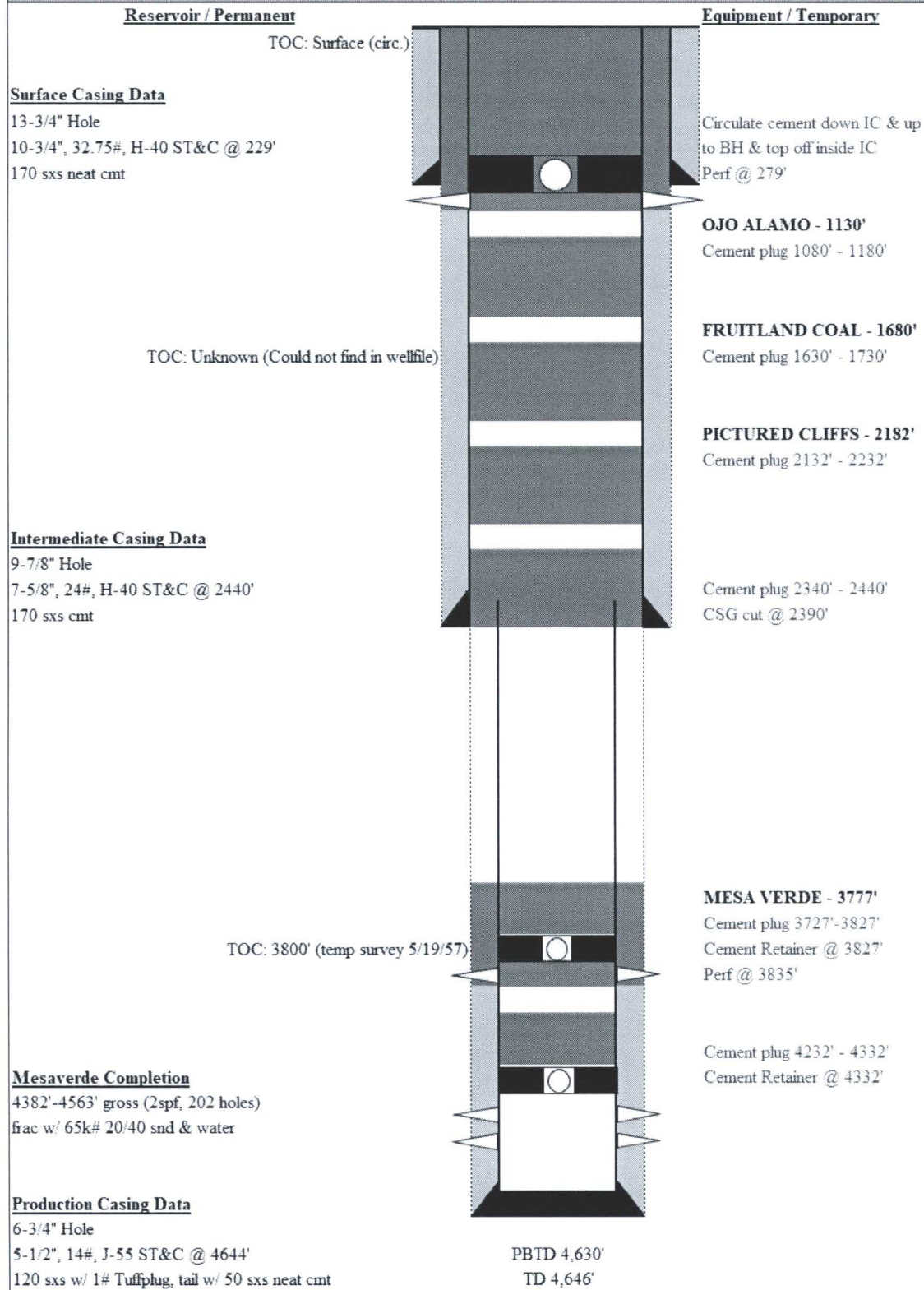
PBSD 4,630'

TD 4,646'



Proposed WBD

NAVAJO ALLOTTED GC A 001-MV



**UNITED STATES DEPARTMENT OF THE INTERIOR
BUREAU OF LAND MANAGEMENT
FARMINGTON DISTRICT OFFICE
6251 COLLEGE BLVD.
FARMINGTON, NEW MEXICO 87402**

Attachment to notice of
Intention to Abandon:

Re: Permanent Abandonment
Well: Navajo Allotted GC A #1

CONDITIONS OF APPROVAL

1. Plugging operations authorized are subject to the attached "General Requirements for Permanent Abandonment of Wells on Federal and Indian Lease."

2. Farmington Office is to be notified at least 24 hours before the plugging operations commence (505) 564-7750.

3. The following modifications to your plugging program are to be made:

- a) Add a cement plug (3128 – 3028) ft. to cover the Chacra top. BLM picks top of Chacra at 3078 ft.
- b) Set Plug #4 (2161 – 2061) ft. to cover the Pictured Cliffs top. BLM picks top of Pictured Cliffs at 2111 ft.
- c) Set Plug #5 (1850 – 1750) ft. to cover the Fruitland top. BLM picks top of Fruitland at 1800 ft.
- d) Set Plug #6 (1380 – 1100) ft. to cover the Kirtland top and the entire Ojo Alamo interval. BLM picks top of Kirtland at 1330 ft. BLM picks top of Ojo Alamo at 1150 ft.

Operator will run CBL to surface to identify TOC. Submit electronic copy of the log for verification to the following addresses: jwsavage@blm.gov brandon.powell@state.nm.us

You are also required to place cement excesses per 4.2 and 4.4 of the attached General Requirements.

Office Hours: 7:45 a.m. to 4:30 p.m.