

RECEIVED

Form 3160-5
(August 2007)UNITED STATES
DEPARTMENT OF THE INTERIOR
BUREAU OF LAND MANAGEMENTFORM APPROVED
OMB No. 1004-0137
Expires: July 31, 2010Farmington Field Office
Bureau of Land Management

5. Lease Serial No.

NMSF078200B

6. If Indian, Allottee or Tribe Name

SUNDRY NOTICES AND REPORTS ON WELLS
Do not use this form for proposals to drill or to re-enter an abandoned well. Use Form 3160-3 (APD) for such proposals.

SUBMIT IN TRIPLICATE - Other instructions on page 2.

1. Type of Well

☐ Oil Well☒ Gas Well☐ Other

7. If Unit of CA/Agreement, Name and/or No.

8. Well Name and No.

Riddle B 11E

2. Name of Operator

Hilcorp Energy Company

9. API Well No.

30-045-26491

3a. Address

382 Road 3100, Aztec, NM 87410

3b. Phone No. (include area code)

505-599-3400

10. Field and Pool or Exploratory Area

Basin Dakota / Blanco Mesaverde

4. Location of Well (Footage, Sec., T., R., M., or Survey Description)

Surface

Unit F (SENW) 1450' FNL & 1450' FWL, Sec. 23, T30N, R10W

11. Country or Parish, State

San Juan

New Mexico

12. CHECK THE APPROPRIATE BOX(ES) TO INDICATE NATURE OF NOTICE, REPORT OR OTHER DATA

TYPE OF SUBMISSION

TYPE OF ACTION

☒ Notice of Intent☐ Acidize☐ Deepen☐ Production (Start/Resume)☐ Water Shut-Off☐ Subsequent Report☐ Alter Casing☐ Fracture Treat☐ Reclamation☐ Well Integrity☐ Casing Repair☐ New Construction☒ Recomplete☐ Other☐ Final Abandonment Notice☐ Change Plans☐ Plug and Abandon☐ Temporarily Abandon☐ Convert to Injection☐ Plug Back☐ Water Disposal

13. Describe Proposed or Completed Operation: Clearly state all pertinent details, including estimated starting date of any proposed work and approximate duration thereof.

If the proposal is to deepen directionally or recomplete horizontally, give subsurface locations and measured and true vertical depths of all pertinent markers and zones. Attach the bond under which the work will be performed or provide the Bond No. on file with BLM/BIA. Required subsequent reports must be filed within 30 days following completion of the involved operations. If the operation results in a multiple completion or recompletion in a new interval, a Form 3160-4 must be filed once Testing has been completed. Final Abandonment Notices must be filed only after all requirements, including reclamation, have been completed and the operator has determined that the site is ready for final inspection.)

Hilcorp Energy Company plans to recomplete the subject well in the Mesaverde formation and downhole commingle with the existing Dakota formation. Please see the attached procedure, wellbore diagram, GCP and plat. A DHC application will be filed and approved prior to commingling. A closed loop system will be used. Interim reclamation will be performed after surface disturbance activities.

BLM'S APPROVAL OR ACCEPTANCE OF THIS ACTION DOES NOT RELIEVE THE LESSEE AND OPERATOR FROM OBTAINING ANY OTHER AUTHORIZATION REQUIRED FOR OPERATIONS ON FEDERAL AND INDIAN LANDS

HOLD C104 FOR Density exception
DHC

NMOCD

FEB 01 2019

DISTRICT III

Notify NMOCD 24 hrs
prior to beginning
operations

14. I hereby certify that the foregoing is true and correct. Name (Printed/Typed)

Amanada Walker

Title Operations/Regulatory Technician - Sr.

Signature

Amanada Walker

Date 1/22/2019

THIS SPACE FOR FEDERAL OR STATE OFFICE USE

Approved by

Title PE

Date 1/31/19

Conditions of approval, if any, are attached. Approval of this notice does not warrant or certify that the applicant holds legal or equitable title to those rights in the subject lease which would entitle the applicant to conduct operations thereon.

Office FFO

Title 18 U.S.C. Section 1001 and Title 43 U.S.C. Section 1212, make it a crime for any person knowingly and willfully to make to any department or agency of the United States any false, fictitious or fraudulent statements or representations as to any matter within its jurisdiction.

(Instruction on page 2)

NMOCD AV

4



HILCORP ENERGY COMPANY
RIDDLE B 11E
MESA VERDE RECOMPLETION SUNDRY

API #:

3004526491

JOB PROCEDURES

1. MIRU service rig and associated equipment; NU and test BOP.
2. TOOH with **1.9"** tubing set at **7,453'**.
3. Set a **4-1/2"** cast iron bridge plug at +/- **7,234'** to isolate the Dakota Formation. Load the casing and pressure test the CIBP.
4. Load hole with fluid and run a CBL on the 4-1/2" casing. Verify cement bond within the Mesa Verde formation.
5. Review the CBL to verify perforations for the recompletion project. Review the CBL results with the NMOCD to verify acceptable cement bond, if cement squeeze work is required, and to notify of the final perforations for the project.
6. Pending perforation interval depths, a 2nd 4-1/2" CIBP is expected to be set 50' below the lowest Mesa Verde perforation.
7. N/D BOP, N/U frac stack. Pressure test the frac stack and the production casing to frac pressure.
8. Perforate and frac the **Mesa Verde** in two or three stages. (Top perforation @ **4,470'**, Bottom perforation @ **5,500'**)
9. Isolate the frac stages with a composite bridge plug and set top isolation plug once frac is completed.
10. RU service rig and associated equipment. Nipple down the frac stack, nipple up the BOP and test.
11. TIH with a mill and drill out top isolation plug and Mesa Verde frac plugs.
12. Clean out to the top of the Dakota isolation plug.
13. Once sand and water rates are acceptable, drill out the Dakota isolation plug and cleanout to PBTD of **7,482'**. TOOH.
14. TIH and land **2-3/8"** production tubing. Get a commingled **Dakota/Mesa Verde** flow rate.

All formation tops for the Riddle B 10E wellbore have been reviewed by Hilcorp Energy. Based on the existing formation tops on the "NMOCD Permitting" website, Hilcorp lowered the Menefee Formation top from 4,600' to 4,700' for this well.



HILCORP ENERGY COMPANY
RIDDLE B 11E
MESA VERDE RECOMPLETION SUNDRY

RIDDLE B 11E - CURRENT WELLBORE SCHEMATIC



Hilcorp Energy Company

Schematic - Current

Well Name: RIDDLE B #11E

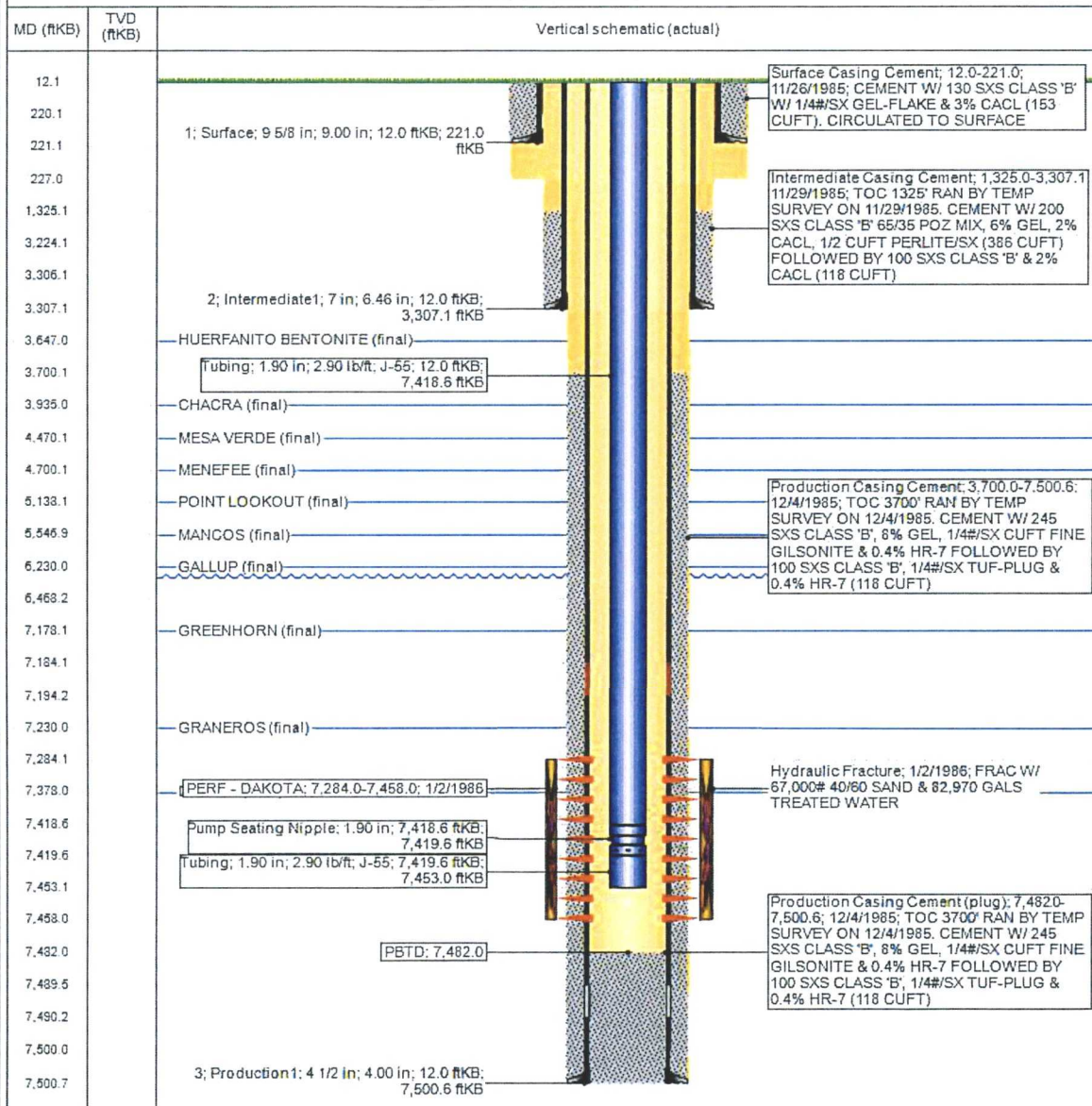
API / UWI 3004526491	Surface Legal Location 023-030N-010W-F	Field Name BASIN DAKOTA (PROPOSED GAS)	License No.	State/Province NEW MEXICO	Well Configuration Type
Original KBRT Elevation (ft) 6,304.00	KB-Tubing Hanger Distance (ft)	Original Spud Date 11/26/1985 00:00	Rig Release Date	PBTD (ft) (ft/B) Original Hole - 7,482.0	Total Depth All (TVD) (ft/B)

Most Recent Job

Job Category	Primary Job Type	Secondary Job Type	Actual Start Date	End Date
--------------	------------------	--------------------	-------------------	----------

TD: 7,500.6

Original Hole, 1/15/2019 10:13:15 AM



District I

1625 N. French Dr., Hobbs, NM 88240
Phone:(575) 393-6161 Fax:(575) 393-0720

District II

811 S. First St., Artesia, NM 88210
Phone:(575) 748-1283 Fax:(575) 748-9720

District III

1000 Rio Brazos Rd., Aztec, NM 87410
Phone:(505) 334-6178 Fax:(505) 334-6170

District IV

1220 S. St Francis Dr., Santa Fe, NM 87505
Phone:(505) 476-3470 Fax:(505) 476-3462

State of New Mexico
Energy, Minerals and Natural
Resources
Oil Conservation Division
1220 S. St Francis Dr.
Santa Fe, NM 87505

WELL LOCATION AND ACREAGE DEDICATION PLAT

1. API Number 30-045-26491	2. Pool Code 72319	3. Pool Name BLANCO-MESAVERDE (PRORATED GAS)
4. Property Code 318683	5. Property Name Riddle B	6. Well No. 011E
7. OGRID No. 372171	8. Operator Name HILCORP ENERGY COMPANY	9. Elevation 6292

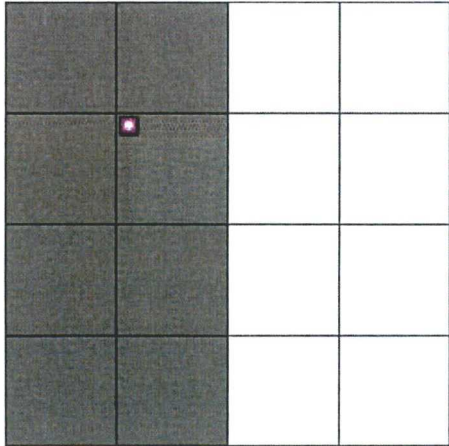
10. Surface Location

UL - Lot F	Section 23	Township 30N	Range 10W	Lot Idn 6	Feet From 1450	N/S Line N	Feet From 1450	E/W Line W	County SAN JUAN
---------------	---------------	-----------------	--------------	--------------	-------------------	---------------	-------------------	---------------	--------------------

11. Bottom Hole Location If Different From Surface

UL - Lot	Section	Township	Range	Lot Idn	Feet From	N/S Line	Feet From	E/W Line	County
12. Dedicated Acres 315.56	13. Joint or Infill			14. Consolidation Code			15. Order No.		

NO ALLOWABLE WILL BE ASSIGNED TO THIS COMPLETION UNTIL ALL INTERESTS HAVE BEEN CONSOLIDATED OR A NON-STANDARD UNIT HAS BEEN APPROVED BY THE DIVISION

	<p style="text-align: center;">OPERATOR CERTIFICATION</p> <p><i>I hereby certify that the information contained herein is true and complete to the best of my knowledge and belief, and that this organization either owns a working interest or unleased mineral interest in the land including the proposed bottom hole location(s) or has a right to drill this well at this location pursuant to a contract with an owner of such a mineral or working interest, or to a voluntary pooling agreement or a compulsory pooling order heretofore entered by the division.</i></p> <p>E-Signed By: <i>Amanda Walker</i> Title: Operations / Regulatory Tech. Sr. Date: 1/21/2019</p> <p style="text-align: center;">SURVEYOR CERTIFICATION</p> <p><i>I hereby certify that the well location shown on this plat was plotted from field notes of actual surveys made by me or under my supervision, and that the same is true and correct to the best of my belief.</i></p> <p>Surveyed By: Fred B. Kerr Jr. Date of Survey: 7/18/1985 Certificate Number: 3950</p>
-------------------------------------------------------------------------------------	--------------------------------------------------------------------------------------------------------------------------------------------------------------------------------------------------------------------------------------------------------------------------------------------------------------------------------------------------------------------------------------------------------------------------------------------------------------------------------------------------------------------------------------------------------------------------------------------------------------------------------------------------------------------------------------------------------------------------------------------------------------------------------------------------------------------------------------------------------------------------------------------------------------------------------------------------------------------------------------------------------------------------------------------------------------------------------------------------