

UNITED STATES
DEPARTMENT OF THE INTERIOR
BUREAU OF LAND MANAGEMENTFORM APPROVED
OMB NO. 1004-0137
Expires: January 31, 2018**SUNDRY NOTICES AND REPORTS ON WELLS**
*Do not use this form for proposals to drill or to re-enter an abandoned well. Use form 3160-3 (APD) for such proposals.*5. Lease Serial No.
NMNM33025

6. If Indian, Allottee or Tribe Name

7. If Unit or CA/Agreement, Name and/or No.

SUBMIT IN TRIPLICATE - Other instructions on page 2

1. Type of Well

☐ Oil Well ☐ Gas Well ☒ Other: COAL BED METHANE8. Well Name and No.
HUGH LAKE 91S

2. Name of Operator

DUGAN PRODUCTION CORPORATION

Contact: ALIPH REENA

Email: aliph.reena@duganproduction.com

9. API Well No.

30-045-33824-00-S1

3a. Address

709 E MURRAY DRIVE
FARMINGTON, NM 87499

3b. Phone No. (include area code)

Ph: 505.325.1821

10. Field and Pool or Exploratory Area
BASIN FRUITLAND COAL

4. Location of Well (Footage, Sec., T., R., M., or Survey Description)

Sec 33 T27N R12W SENE 1645FNL 1130FEL
36.534423 N Lat, 108.111852 W Lon

11. County or Parish, State

SAN JUAN COUNTY, NM

12. CHECK THE APPROPRIATE BOX(ES) TO INDICATE NATURE OF NOTICE, REPORT, OR OTHER DATA

TYPE OF SUBMISSION

TYPE OF ACTION

☐ Notice of Intent☒ Subsequent Report☐ Final Abandonment Notice☐ Acidize☐ Alter Casing☐ Casing Repair☐ Change Plans☐ Convert to Injection☐ Deepen☐ Hydraulic Fracturing☐ New Construction☒ Plug and Abandon☐ Plug Back☐ Production (Start/Resume)☐ Reclamation☐ Recomplete☐ Temporarily Abandon☐ Water Disposal☐ Water Shut-Off☐ Well Integrity☐ Other

13. Describe Proposed or Completed Operation: Clearly state all pertinent details, including estimated starting date of any proposed work and approximate duration thereof. If the proposal is to deepen directionally or recomplete horizontally, give subsurface locations and measured and true vertical depths of all pertinent markers and zones. Attach the Bond under which the work will be performed or provide the Bond No. on file with BLM/BIA. Required subsequent reports must be filed within 30 days following completion of the involved operations. If the operation results in a multiple completion or recompletion in a new interval, a Form 3160-4 must be filed once testing has been completed. Final Abandonment Notices must be filed only after all requirements, including reclamation, have been completed and the operator has determined that the site is ready for final inspection.

Well was P&A'd 11/27/18 - 11/28/18 as per the following procedure:

1) Set 5-1/2" CR @ 884'. Load hole. Pressure test casing to 600 psi for 30 mins. Casing tested good. Run CBL from 884' to surface. TOC from CBL at surface.

2) Spot inside Plug I above CR @ 884' w/30 sks (34.5 cu ft) Class G w/cement to 625' (15.6#/gal, 1.15 cu ft/sk). Plug I: Fruitland 30 sks, 34.5 cu ft, 625'-884'.

3) Spot Plug II inside casing from 262' w/30 sks (34.5 cu ft) Class G cement to surface (15.6#/gal, 1.15 cu ft/sk). Plug II: Kirtland-Ojo Alamo-surface, 0'-262'.

4) Cut wellhead. TOC at surface. Install below ground plate for dryhole marker. Please see attached current survey and photograph.

5) Clean location. Well P&A'd 11/28/18.

NMOC

FEB 21 2019

DISTRICT III

14. I hereby certify that the foregoing is true and correct.

**Electronic Submission #451174 verified by the BLM Well Information System
For DUGAN PRODUCTION CORPORATION, sent to the Farmington
Committed to AFMSS for processing by SHANNON FACHAN on 02/15/2019 (18JWS0174SE)**

Name (Printed/Typed) ALIPH REENA

Title AGENT, ENGINEERING SUPERVISOR

Signature (Electronic Submission)

Date 01/18/2019

THIS SPACE FOR FEDERAL OR STATE OFFICE USE

Approved By

ACCEPTED

VIRGIL LUCERO
Title BRANCH CHIEF, I&E

Date 02/15/2019

Conditions of approval, if any, are attached. Approval of this notice does not warrant or certify that the applicant holds legal or equitable title to those rights in the subject lease which would entitle the applicant to conduct operations thereon.

Office Farmington

Title 18 U.S.C. Section 1001 and Title 43 U.S.C. Section 1212, make it a crime for any person knowingly and willfully to make to any department or agency of the United States any false, fictitious or fraudulent statements or representations as to any matter within its jurisdiction.

(Instructions on page 2)

**** BLM REVISED ** BLM REVISED ** BLM REVISED ** BLM REVISED ** BLM REVISED ****

A

4

DUGAN Prod. Co.

HUGH LAKE 91S

NMNM 33025

30-045-33824-00-51

Sec. 35 T27N R12W

ESE 16 45 50 N 1130 FEL

36.534423N LAT

108.111852E LON

SAN JUAN CO.



District I
1625 N. French Drive, Hobbs, NM 88240
Phone: (575) 393-6161 Fax: (575) 393-0720

District II
811 S. First Street, Artesia, NM 88210
Phone: (575) 748-1283 Fax: (575) 748-9720

District III
1000 Rio Brazos Road, Aztec, NM 87410
Phone: (505) 334-6178 Fax: (505) 334-6170

District IV
1220 S. St. Francis Drive, Santa Fe, NM 87505
Phone: (505) 476-3460 Fax: (505) 476-3462

State of New Mexico
Energy, Minerals & Natural Resources Department

Form C-102
Revised August 1, 2011

Submit one copy to
Appropriate District Office

OIL CONSERVATION DIVISION

1220 South St. Francis Drive
Santa Fe, NM 87505

☐ AMENDED REPORT

WELL LOCATION AND ACREAGE DEDICATION PLAT

*API Number 30-045-33824		*Pool Code 71629		*Pool Name BASIN FRUITLAND COAL	
*Property Code		*Property Name HUGH LAKE			*Well Number 91S
*GRID No. 006515		*Operator Name DUGAN PRODUCTION CORPORATION		*Top of Plate Elevation 5845'	*Ground Elevation 5850'

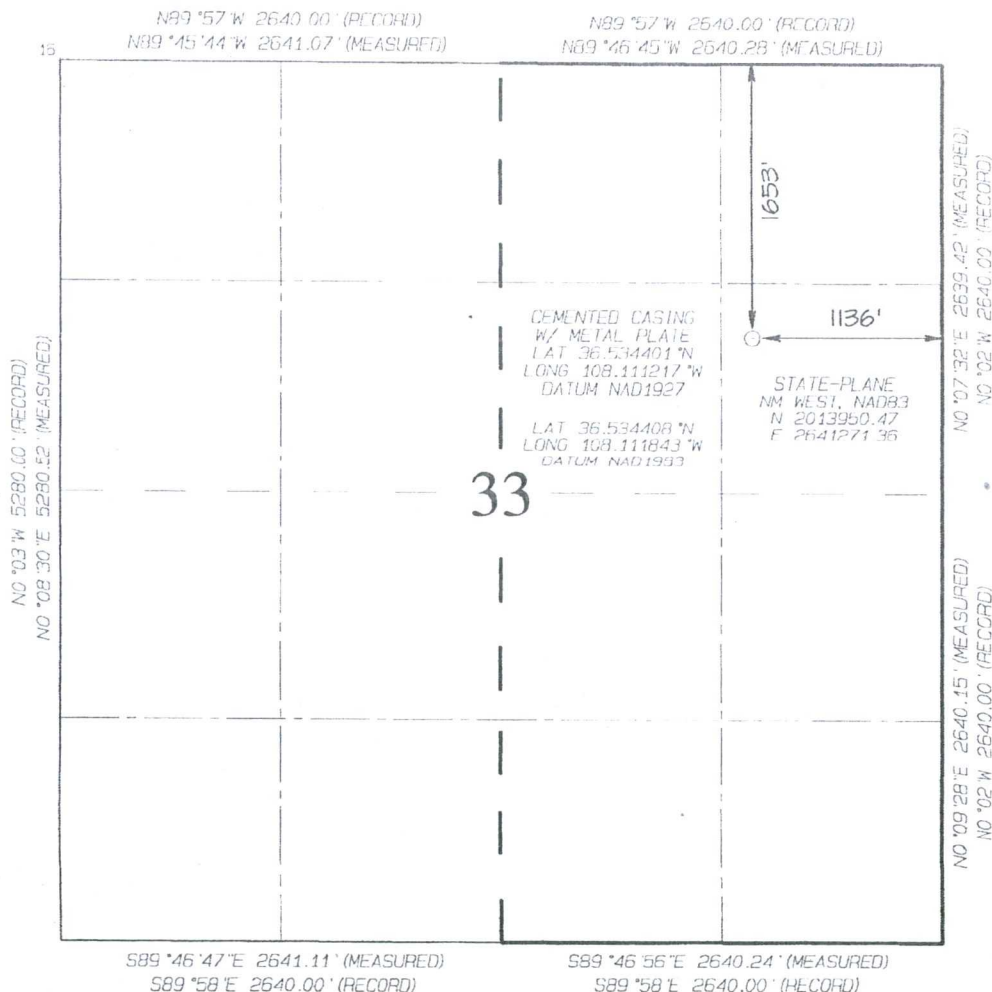
10 Surface Location

UC or lot no.	Section	Township	Range	Lot 10	Feet from the	North/South line	Feet from the	East/West line	County
H	33	27N	12W		1653	NORTH	1136	EAST	SAN JUAN

11 Bottom Hole Location if Different From Surface

UC or lot no.	Section	Township	Range	Lot 10	Feet from the	North/South line	Feet from the	East/West line	County
*Dedicated Acres 320.00		E/2 - Section 33			*Percent of Interest		*Consolidation Code	*Order No.	

NO ALLOWABLE WILL BE ASSIGNED TO THIS COMPLETION UNTIL ALL INTERESTS HAVE
BEEN CONSOLIDATED OR A NON-STANDARD UNIT HAS BEEN APPROVED BY THE DIVISION



17 OPERATOR CERTIFICATION

I hereby certify that the information contained herein is true and complete to the best of my knowledge and belief, and that this organization either owns a working interest or unleased mineral interest in the land including the proposed bottom-hole location or has a right to drill this well at this location pursuant to a contract with an owner of such a mineral or working interest, or to a voluntary pooling agreement or a compulsory pooling order heretofore entered by the division.

Signature _____ Date _____

Printed Name _____

E-mail Address _____

18 SURVEYOR CERTIFICATION

I hereby certify that the well location shown on this plat was plotted from field notes of actual surveys made by me or under my supervision, and that the same is true and correct to the best of my belief.

Date Revised: DECEMBER 18, 2018
Date of Survey: DECEMBER 6, 2018

Signature and Seal of Professional Surveyor

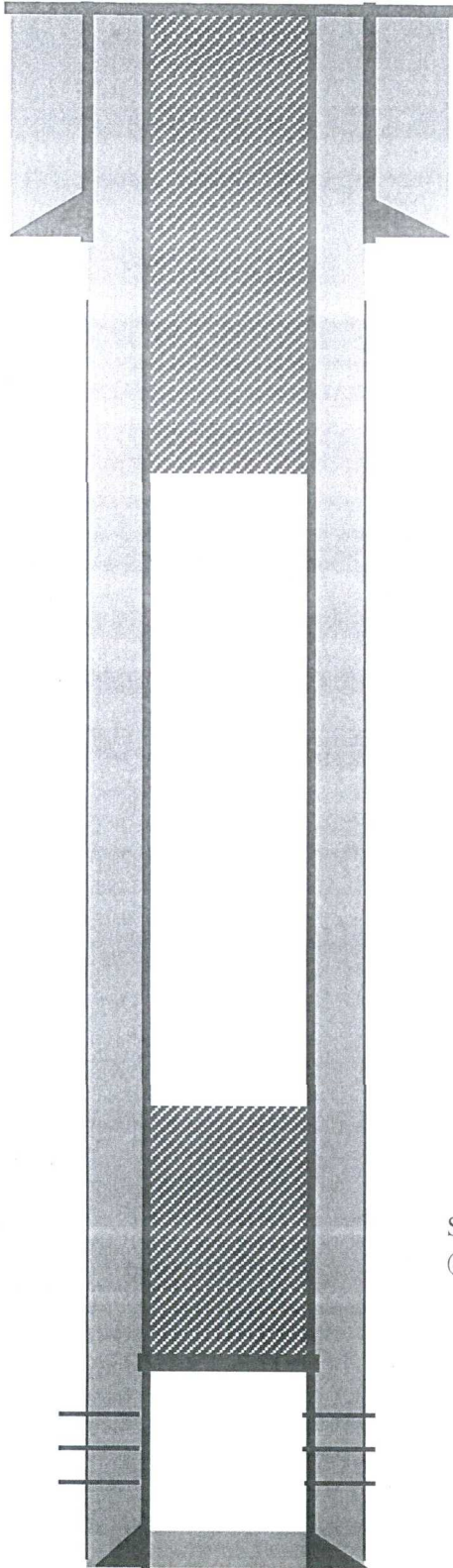


JASON C. EDWARDS

Certificate Number 15269

Completed P & A Schematic

Hugh Lake # 91S
30-045-33824, Basin Fruitland Coal
1645 FNL & 1130 FEL,
NM33025
H S33 T27N R12W, San Juan County



8-5/8" 24# casing @ 130'. Cemented with 95 sks Type 5 Cement. Hole size 12-1/4". 4 bbl Cement circulated to surface.

Spot plug from 262' to surface w/ 30 sks Class G Cement (34.5 cu.ft) (Plug II, Kirtland-Ojo Alamo-Surface, 0-262')

5 1/2" 15.5 # casing @ 1370'. Hole size: 7"

Cement production casing w/ 80 sks Type 5 2% lodense followed by 50 sks Type 5. Total Cement volume, 231 cu.ft.
8 bbls Cement circulated to surface.

TOC from CBL @ surface.

Set CIBP @ 884'. Set Inside Plug I with 30 sks (34.5 cu.ft) @ 625'-884' w/ Class G cement.(625'-882') (Plug I, Fruitland)

Fruitland Coal Perforated @ 924' - 1184'

PBTD @ 1332', TD 1380'