

Submit 1 Copy To Appropriate District
Office
District I – (575) 393-6161
1625 N. French Dr., Hobbs, NM 88240
District II – (575) 748-1283
811 S. First St., Artesia, NM 88210
District III – (505) 334-6178
1000 Rio Brazos Rd., Aztec, NM 87410
District IV – (505) 476-3460
1220 S. St. Francis Dr., Santa Fe, NM
87505

State of New Mexico
Energy, Minerals and Natural Resources

Form C-103
Revised July 18, 2013

OIL CONSERVATION DIVISION
1220 South St. Francis Dr.
Santa Fe, NM 87505

WELL API NO. 30-045-23834
5. Indicate Type of Lease STATE <input type="checkbox"/> FEE <input checked="" type="checkbox"/>
6. State Oil & Gas Lease No.
7. Lease Name or Unit Agreement Name San Juan 32-7 Unit
8. Well Number 55
9. OGRID Number 372171
10. Pool name or Wildcat Basin Dakota

SUNDRY NOTICES AND REPORTS ON WELLS
(DO NOT USE THIS FORM FOR PROPOSALS TO DRILL OR TO DEEPEN OR PLUG BACK TO A
DIFFERENT RESERVOIR. USE "APPLICATION FOR PERMIT" (FORM C-101) FOR SUCH
PROPOSALS.)

1. Type of Well: Oil Well ☐ Gas Well ☒ Other

2. Name of Operator
HILCORP ENERGY COMPANY

3. Address of Operator
382 Road 3100, Aztec, NM 87410

4. Well Location

Unit Letter K: 1770' feet from the South line and 1830' feet from the West line

Section 07 Township 32N Range 07W NMPM County San Juan

11. Elevation (Show whether DR, RKB, RT, GR, etc.)
6515' GL

12. Check Appropriate Box to Indicate Nature of Notice, Report or Other Data

NOTICE OF INTENTION TO:

PERFORM REMEDIAL WORK ☐ PLUG AND ABANDON ☐
TEMPORARILY ABANDON ☐ CHANGE PLANS ☐
PULL OR ALTER CASING ☐ MULTIPLE COMPL ☐
DOWNHOLE COMMINGLE ☐
CLOSED-LOOP SYSTEM ☐
OTHER: ☒ RECOMPLETE

SUBSEQUENT REPORT OF:

REMEDIAL WORK ☐ ALTERING CASING ☐
COMMENCE DRILLING OPNS. ☐ P AND A ☐
CASING/CEMENT JOB ☐
OTHER: ☐

13. Describe proposed or completed operations. (Clearly state all pertinent details, and give pertinent dates, including estimated date of starting any proposed work). SEE RULE 19.15.7.14 NMAC. For Multiple Completions: Attach wellbore diagram of proposed completion or recompletion.

Hilcorp Energy Company requests permission to recomplete the subject well in the Mesaverde and downhole commingle with the existing Dakota. Please see the attached procedure, wellbore diagram, plat and GCP. A closed loop system will be used.

NMOCD

MAR 07 2019

DISTRICT III

Notify NMOCD 24 hrs
prior to beginning
operations

I hereby certify that the information above is true and complete to the best of my knowledge and belief.

SIGNATURE Amanda Walker TITLE Operations/Regulatory Technician – Sr. DATE 3/6/2019

Type or print name Amanda Walker E-mail address: mwalker@hilcorp.com PHONE: (505)324-5122

For State Use Only

APPROVED BY: Brad Bell TITLE Deputy Oil & Gas Inspector, DATE 3/14/19

Conditions of Approval (if any):

AV

District #3



HILCORP ENERGY COMPANY
SAN JUAN 32-7 UNIT 55
MESA VERDE RECOMPLETION SUNDRY

JOB PROCEDURES

1. MIRU workover rig and associated equipment; NU and test BOP.
2. TOOH with 2 3/8" tubing set at 7,980'.
3. Set a 4-1/2" cast iron bridge plug at +/- 7914' to isolate the Dakota. (Note the casing weight changes at 6618')
4. Load hole with fluid and run a CBL on the 4-1/2" casing. Verify cement bond within the Mesa Verde and confirm TOC (estimated at 5084' by 75% efficiency calculation). Review CBL results with engineering/NMOCD and perform cmt remediation, if required.
5. Notify NMOCD 24 hrs in advance. Top off hole with fluid and perform casing MIT from 7914' to surface.
6. Set a 4-1/2" cast iron bridge plug at +/- 6050' to provide a base for the frac.
7. Perforate the Mesa Verde. (Top perforation @ 5,310', Bottom perforation @ 6,000')
8. RIH w/ frac string and packer with ceramic disc sub. Set pkr at ~5,260' and land tbq.
9. N/D BOP, N/U frac stack and test frac stack to frac pressure. Open well and PT frac string to 9000 psi.
10. RU slickline. RIH and break ceramic disc. RD slickline.
11. Frac the Mesa Verde in 1 stage.
12. RU flowback eqmt. Flowback well until tubing pressure drops to working level and sand subsides or well loads up. RD flowback eqmt.
13. MIRU workover rig. Nipple down frac stack, nipple up BOP and test.
14. Release pkr and POOH LD workstring.
15. TIH with a mill and clean out to the top of the DK isolation plug at 7,914'. Take Mesa Verde gas samples and analyze.
16. Drill out Dakota isolation plug and cleanout to PBTD of 8,006'. TOOH.
17. TIH and land production tubing. Get a commingled Dakota/Mesa Verde flow rate.
- 18.
- 19.



HILCORP ENERGY COMPANY
SAN JUAN 32-7 UNIT 55
MESA VERDE RECOMPLETION SUNDRY

SAN JUAN 32-7 UNIT 55 - CURRENT WELLBORE SCHEMATIC

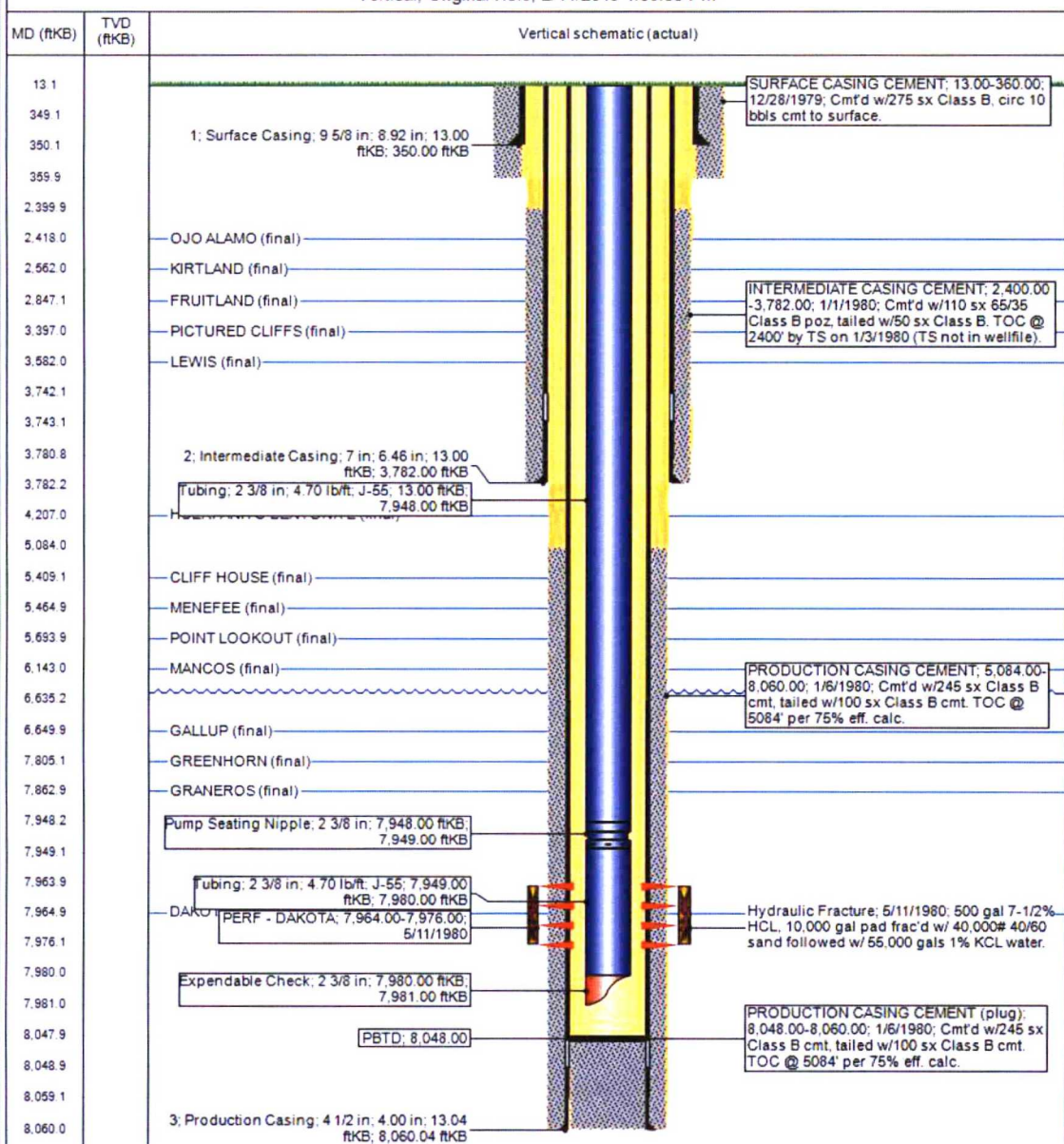


Current Schematic

Well Name: SAN JUAN 32-7 UNIT #55

API UWI 3004523834	Surface Legal Location 007-032N-007W-K	Field Name DK	Route 0501	State/Province NEW MEXICO	Well Configuration Type Vertical
Ground Elevation (ft) 6,515.00	Original KB RT Elevation (ft) 6,528.00	KB-Ground Distance (ft) 13.00	KB-Casing Flange Distance (ft)	KB-Tubing Hanger Distance (ft)	

Vertical, Original Hole, 2/14/2019 1:50:35 PM



District I1625 N. French Dr., Hobbs, NM 88240
Phone:(575) 393-6161 Fax:(575) 393-0720**District II**811 S. First St., Artesia, NM 88210
Phone:(575) 748-1283 Fax:(575) 748-9720**District III**1000 Rio Brazos Rd., Aztec, NM 87410
Phone:(505) 334-6178 Fax:(505) 334-6170**District IV**1220 S. St Francis Dr., Santa Fe, NM 87505
Phone:(505) 476-3470 Fax:(505) 476-3462

State of New Mexico
Energy, Minerals and Natural
Resources
Oil Conservation Division
1220 S. St Francis Dr.
Santa Fe, NM 87505

WELL LOCATION AND ACREAGE DEDICATION PLAT

1. API Number 30-045-23834	2. Pool Code 72319	3. Pool Name BLANCO-MESAVERDE (PRORATED GAS)
4. Property Code 318434	5. Property Name SAN JUAN 32 7 UNIT	6. Well No. 055
7. OGRID No. 372171	8. Operator Name HILCORP ENERGY COMPANY	9. Elevation 6515

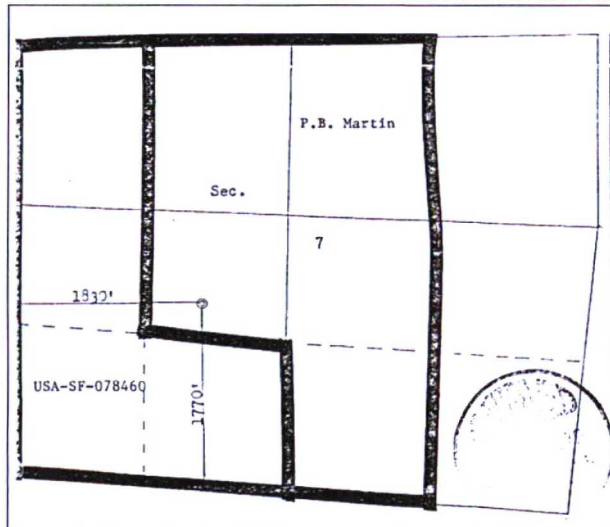
10. Surface Location

UL - Lot K	Section 7	Township 32N	Range 07W	Lot Idn	Feet From 1770	N/S Line S	Feet From 1830	E/W Line W	County SAN JUAN
---------------	--------------	-----------------	--------------	---------	-------------------	---------------	-------------------	---------------	--------------------

11. Bottom Hole Location If Different From Surface

UL - Lot	Section	Township	Range	Lot Idn	Feet From	N/S Line	Feet From	E/W Line	County
12. Dedicated Acres 293.09 243.21									
13. Joint or Infill									
14. Consolidation Code									
15. Order No. NSP: R-1066									

NO ALLOWABLE WILL BE ASSIGNED TO THIS COMPLETION UNTIL ALL INTERESTS HAVE BEEN CONSOLIDATED OR A NON-STANDARD UNIT HAS BEEN APPROVED BY THE DIVISION

**OPERATOR CERTIFICATION**

I hereby certify that the information contained herein is true and complete to the best of my knowledge and belief, and that this organization either owns a working interest or unleased mineral interest in the land including the proposed bottom hole location(s) or has a right to drill this well at this location pursuant to a contract with an owner of such a mineral or working interest, or to a voluntary pooling agreement or a compulsory pooling order heretofore entered by the division.

E-Signed By: Amanda Walker

Title: Operations / Regulatory Tech. Sr.

Date: 3/6/2019

SURVEYOR CERTIFICATION

I hereby certify that the well location shown on this plat was plotted from field notes of actual surveys made by me or under my supervision, and that the same is true and correct to the best of my belief.

Surveyed By: Fred B. Kerr Jr.

Date of Survey: 8/15/1979

Certificate Number: 3950