

UNITED STATES
DEPARTMENT OF THE INTERIOR
BUREAU OF LAND MANAGEMENTFORM APPROVED
OMB NO. 1004-0137
Expires: January 31, 2018**SUNDRY NOTICES AND REPORTS ON WELLS**
*Do not use this form for proposals to drill or to re-enter an abandoned well. Use form 3160-3 (APD) for such proposals.*5. Lease Serial No.
JIC3626. If Indian, Allottee or Tribe Name
JICARILLA APACHE

7. If Unit or CA/Agreement, Name and/or No.

SUBMIT IN TRIPLICATE - Other instructions on page 2

1. Type of Well

☒ Oil Well ☐ Gas Well ☐ Other8. Well Name and No.
MARTIN-WHITTAKER 232. Name of Operator
DJR OPERATING LLCContact: SHAW-MARIE CRUES
E-Mail: scrues@djrlc.com9. API Well No.
30-039-23372-00-S13a. Address
1600 BROADWAY SUITE 1600
DENVER, CO 802023b. Phone No. (include area code)
Ph: 505-632-3476 Ext: 21910. Field and Pool or Exploratory Area
SOUTH LINDRITH4. Location of Well (Footage, Sec., T., R., M., or Survey Description)
Sec 7 T23N R4W SENW11. County or Parish, State
RIO ARRIBA COUNTY, NM**12. CHECK THE APPROPRIATE BOX(ES) TO INDICATE NATURE OF NOTICE, REPORT, OR OTHER DATA**

TYPE OF SUBMISSION	TYPE OF ACTION			
<input type="checkbox"/> Notice of Intent	<input type="checkbox"/> Acidize	<input type="checkbox"/> Deepen	<input type="checkbox"/> Production (Start Resume)	<input type="checkbox"/> Water Shut-Off
<input checked="" type="checkbox"/> Subsequent Report	<input type="checkbox"/> Alter Casing	<input type="checkbox"/> Hydraulic Fracturing	<input type="checkbox"/> Reclamation	<input type="checkbox"/> Well Integrity
<input type="checkbox"/> Final Abandonment Notice	<input type="checkbox"/> Casing Repair	<input type="checkbox"/> New Construction	<input type="checkbox"/> Recomplete	<input type="checkbox"/> Other
	<input type="checkbox"/> Change Plans	<input checked="" type="checkbox"/> Plug and Abandon	<input type="checkbox"/> Temporarily Abandon	
	<input type="checkbox"/> Convert to Injection	<input type="checkbox"/> Plug Back	<input type="checkbox"/> Water Disposal	

13. Describe Proposed or Completed Operation: Clearly state all pertinent details, including estimated starting date of any proposed work and approximate duration thereof. If the proposal is to deepen directionally or recompleat horizontally, give subsurface locations and measured and true vertical depths of all pertinent markers and zones. Attach the Bond under which the work will be performed or provide the Bond No. on file with BLM BIA. Required subsequent reports must be filed within 30 days following completion of the involved operations. If the operation results in a multiple completion or recompleat in a new interval, a Form 3160-4 must be filed once testing has been completed. Final Abandonment Notices must be filed only after all requirements, including reclamation, have been completed and the operator has determined that the site is ready for final inspection.

This well has been plugged and abandoned per the attached procedure and wellbore diagram

NMOCD

APR 05 2019

DISTRICT III

14. I hereby certify that the foregoing is true and correct.

Electronic Submission #459314 verified by the BLM Well Information System
For DJR OPERATING LLC, sent to the Rio Puerco
Committed to AFMSS for processing by SHANNON FACHAN on 04/01/2019 (14TS0099S)

Name (Printed/Typed) SHAW-MARIE CRUES

Title HSE TECHNICIAN

Signature (Electronic Submission)

Date 03/26/2019

THIS SPACE FOR FEDERAL OR STATE OFFICE USE

Approved By

ACCEPTED

VIRGIL LUCERO
Title SUPERVISORY PETROLEUM ENGINEER TECH Date 04/01/2019

Conditions of approval, if any, are attached. Approval of this notice does not warrant or certify that the applicant holds legal or equitable title to those rights in the subject lease which would entitle the applicant to conduct operations thereon.

Office Rio Puerco

Title 18 U.S.C. Section 1001 and Title 43 U.S.C. Section 1212, make it a crime for any person knowingly and willfully to make to any department or agency of the United States any false, fictitious or fraudulent statements or representations as to any matter within its jurisdiction.

(Instructions on page 2)

**** BLM REVISED ** BLM REVISED ** BLM REVISED ** BLM REVISED ** BLM REVISED ****

AV

6

DJR Operating LLC

Plug And Abandonment End Of Well Report

Martin Whittaker No. 23

1745' FNL & 1190' FWL, Section 7, T23N, R4W

Rio Arriba County, NM / API 30-039-23372

Work Summary:

- 10/31/18** Made BLM, NMOCD and Jicarilla P&A operations notifications at 9:00 AM MST.
- 11/1/18** MOL and R/U P&A unit. Checked well pressures: Tubing: 18 psi, Casing: 35 psi, Bradenhead: 35 psi. Bled down well.
- 11/2/18** Checked well pressures: Tubing: 10 psi, Casing: 6 psi, Bradenhead: 6 psi. Bled down well. L/D rod string and pump. Found companion flange from WSI to get BOP nipped up. N/D wellhead, N/U BOP and function tested. POOH with production tubing. L/D production string because of paraffin. Shut-in well for the day.
- 11/5/18** Checked well pressures: Tubing: 0 psi, Casing: 16 psi, Bradenhead: 16 psi. Bled down well. TIH with casing scraper and tagged tight spot at 4689'. Attempted to wash/mill through tight spot but was unsuccessful. Bit would immediately torque up once milling was attempted. TOH and L/D bit and scraper. R/U wire line services. RIH to run CBL but also tagged up at 4689'. P/U tricone bit without casing scraper but also tagged and torqued up at 4689'. Initially it was thought that the tag point was the liner top but after consulting pipe tally it was found tag spot was 16' within liner. A mule shoe sub with a joint of tubing and watermelon mill will be picked up to attempt to get through tight spot at 4689' on 11/6/18. Shut-in well for the day.
- 11/6/18** Checked well pressures: Tubing: 0 psi, Casing: 0 psi, Bradenhead: 0 psi. Bled down well. P/U mule shoe sub with one joint of tubing and watermelon mill. TIH and attempted to mill on tight spot at 4689' but

mule shoe sub torqued up immediately. TOH. P/U tapered mill and TIH to tight spot at 4689'. Attempted to mill tight spot with tapered mill but had the same result as other mill runs. TOH. Circulated oil out of the hole to the rig pit while loading the hole. R/U wireline services. Ran CBL from tight spot at 4689' to surface. CBL results were sent to NMOCD/BLM/Jicarilla offices for review. Shut-in well for the day. Bryce Hammond was Jicarilla inspector on location.

- 11/7/18** Checked well pressures: Tubing: 0 psi, Casing: 0 psi, Bradenhead: 0 psi. Bled down well. TIH with cementing sub to tight spot at 4689'. Bryce Hammond was Jicarilla inspector on location.
- 11/13/18** Checked well pressures: Tubing: 0 psi, Casing: 0 psi, Bradenhead: 0 psi. Bled down well. R/U cementing services. Pumped plug #1 from 4689'-3789' to cover the Tocito-Semilla perforations and formation top, Gallup, Mancos, and Mesa Verde formation tops. WOC 6 hours. TIH and tagged plug #1 top at 4026' which was just over 100' short of minimum plug interval. R/U cementing services. Topped-off plug #1 with 82 sx of cement to 3600'. WOC overnight. Shut-in well for the day. Bryce Hammond was Jicarilla inspector on location.
- 11/14/18** Checked well pressures: Tubing: 0 psi, Casing: 0 psi, Bradenhead: 0 psi. Bled down well. TIH and tagged plug #1 top at 3603'. Pressure tested casing to 800 psi in which it failed to hold pressure. R/U cementing services. Pumped plug #2 from 3318'-3000' to cover the Chacra formation top. WOC 4 hours. TIH and tagged plug #2 top at 3010'. Pressure tested casing to 800 psi in which it failed to hold pressure. R/U cementing services. Pumped plug #3 from 2558'-1800' to cover the Pictured Cliffs, Fruitland, and Ojo Alamo formation tops. WOC overnight. Shut-in well for the day. Bryce Hammond was Jicarilla inspector on location.
- 11/15/18** Checked well pressures: Tubing: 0 psi, Casing: 0 psi, Bradenhead: 0 psi. Bled down well. TIH and tagged plug #3 top at 1827'. R/U wire line services. RIH and perforated squeeze holes at 670'. P/U packer and TIH to determine if injection rate could be established into perforations at 670'. Attempted to establish injection rate into perforations but was unsuccessful. R/U wireline services. RIH and perforated squeeze holes at 550'. P/U packer to determine if injection rate could be established into perforations but once again failed to establish injection rate into perforations at 550'. BLM/Jicarilla offices approved spotting an inside plug from 728' to surface. R/U cementing services. Pumped surface plug from 728' to surface and successfully circulated cement to surface and out casing valve. Hooked into Bradenhead and pumped cement down Bradenhead until it locked up. N/D BOP and cut-off wellhead. Installed P&A marker per BLM/NMOCD/Jicarilla standards. Ran

weighted tally tape down both surface and production casings and tagged cement 12' down in both casings. Topped-off well with 26 sx of cement. Took a picture of the P&A marker in place and recorded its location via GPS coordinates. R/D and MOL. Bryce Hammond was Jicarilla inspector on location.

Plug Summary:

Plug #1: (Tocito-Semilla Perforations and Formation Top, Gallup, Mancos, and Mesa Verde formation tops 4689'-3603', 255 Sacks(82 sx top-off) Class G Cement)

Mixed 255 sx Class G cement and spotted a balanced plug to cover the Tocito-Semilla perforations and formation top, Gallup, Mancos, and Mesa Verde formation tops. Re-pumped 82 sx top-off.

Plug #2: (Chacra Formation Top 3318'-3010', 62 Sacks Class G cement)

Mixed 62 sx Class G cement and spotted a balanced plug to cover the Chacra formation top.

Plug #3: (Pictured Cliffs, Fruitland, and Ojo Alamo Formation Tops 2558'-1827', 145 Sacks Class G Cement)

Mixed 145 sx Class G cement and spotted a balanced plug to cover the Pictured Cliffs, Fruitland, and Ojo Alamo formation tops.

Plug #4: (Nacimiento Formation Top and Surface Shoe 728'-surface, 210 Sacks Class G Cement, 26 Sacks for top-off)

RIH and perforated squeeze holes at 670'. P/U packer and TIH to determine if injection rate could be established into perforations at 670'. Attempted to establish injection rate into perforations but was unsuccessful. R/U wireline services. RIH and perforated squeeze holes at 550'. P/U packer to determine if injection rate could be established into perforations but once again failed to establish injection rate into perforations at 550'. BLM/Jicarilla offices approved spotting an inside plug from 728' to surface. R/U cementing services. Pumped surface plug from 728' to surface and successfully circulated cement to surface and out casing valve. Hooked into Bradenhead and pumped cement down Bradenhead until it locked up. N/D BOP and cut-off wellhead. Installed P&A marker per BLM/NMOCD/Jicarilla standards. Ran weighted tally tape down both surface and production casings and tagged cement 12' down in both casings. Topped-off well with 26 sx of cement. Took a

picture of the P&A marker in place and recorded its location via GPS coordinates.

Wellbore Diagram

Martin Whittaker 23
API #: 3003923372
San Juan, New Mexico

Plug 4

728 feet - Surface
728 feet plug
210 sacks of Class G Cement
26 sacks for top-off

Plug 3

2558 feet - 1827 feet
731 feet plug
145 sacks of Class G Cement

Plug 2

3318 feet - 3010 feet
308 feet plug
62 sacks of Class G Cement

Plug 1

4689 feet - 3603 feet
1086 feet plug
255 sacks of Class G Cement
82 sacks for top-off

Surface Casing

9.625" 32# @ 269 ft

Intermediate Casing

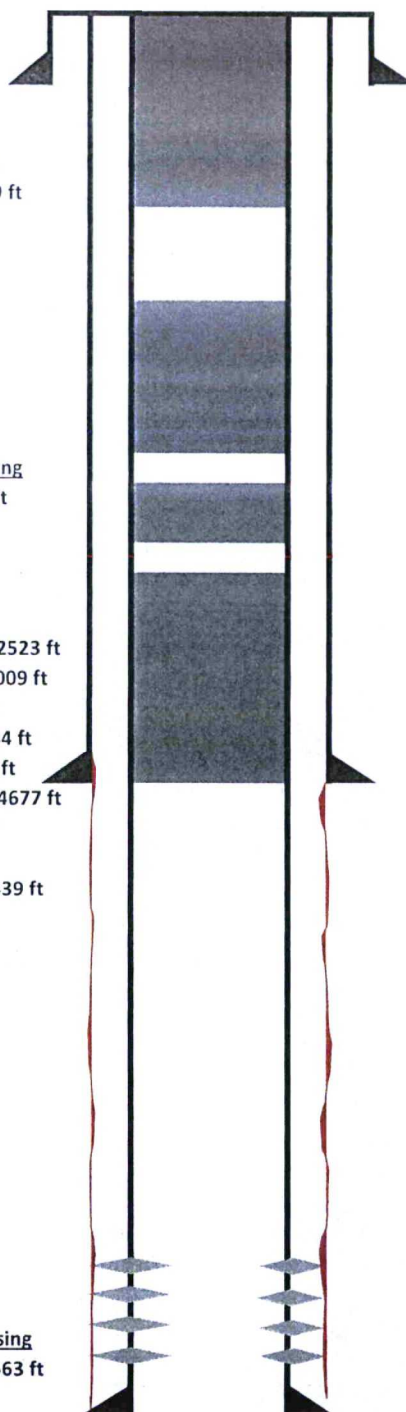
7" 23# @ 4802 ft

Formation

Pictured Cliffs - 2523 ft
La Ventanna - 3009 ft
Chacra - 3357 ft
Cliff House - 4034 ft
Menefee - 4115 ft
Point Lookout - 4677 ft
Gallup - 5695 ft
Tocito - 6385 ft
Juana Lopez - 6439 ft
Semilla - 6491 ft

Production Casing

4.5" 11.6# @ 6563 ft

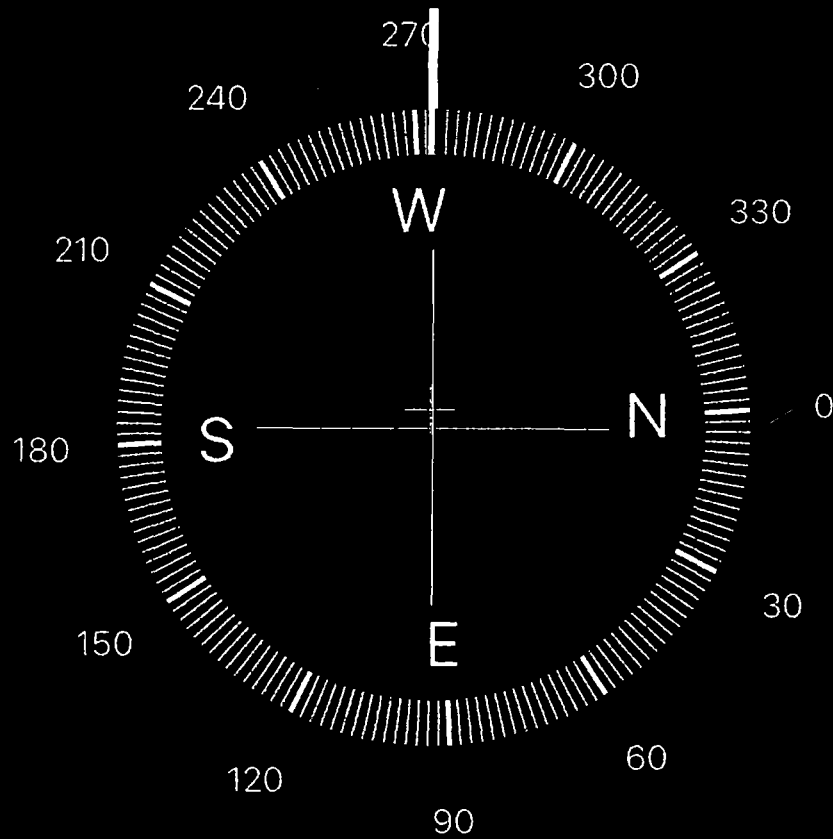




Martin Whittaker 30-039-23372

3:27

LTE



273° W

36°14'23" N 107°17'58" W

Regina, NM

6850 ft Elevation