

District I (575) 393-6161  
1625 N. French Dr., Hobbs, NM 88240  
District II (575) 748-1283  
811 S. First St., Artesia, NM 88210  
District III (505) 334-6178  
1000 Rio Brazos Road, Aztec, NM 87410  
District IV (505) 827-8198  
1220 S. St. Francis Dr., Santa Fe, NM 87505

State of New Mexico  
Energy Minerals and Natural Resources

Oil Conservation Division  
1220 South St. Francis Dr.  
Santa Fe, NM 87505

Form C-106  
Revised August 1, 2011

Permit No.

30.045-35879 3-26  
**NOTICE OF INTENTION TO UTILIZE AUTOMATIC CUSTODY TRANSFER EQUIPMENT**

**AMENDED**

Operator Enduring Resources IV LLC

Address 200 Energy Court Farmington NM 87401 County San Juan

Lease(s) to be served by this ACT Unit: NMNM-135255A (Kimbeto Wash Unit)

Pool(s) to be served by this ACT Unit Basin Mancos (97232)

Location of ACT System: Unit P Section 17 Township 23N Range 9W

Order No. authorizing commingling between leases if more than one lease is to be served by this system.

R-14084 Date 11/30/2015

Order No. authorizing commingling between pools if more than one pool is to be served by this system

N/A Date N/A

Authorized transporter of oil from this system Whiptail Midstream, LLC

Transporter's address 15 West 6<sup>th</sup> Street, Tulsa, OK 74119

Maximum expected daily through-put for this system: 6,000 BBL/Day

If system fails to transfer oil due to malfunction or otherwise, waste by overflow will be averted by: DISTRICT III

CHECK ONE: A. ☐ Automatic shut-down facilities as required by 19.15.18.15.C(8) NMAC B. ☒ Providing adequate available capacity to receive production during maximum unattended time of lease operation 19.15.18.15.C(9) NMAC

If "A" above is checked, will flowing wells be shut-in at the header manifold or at the wellhead?

NA Maximum well-head shut-in pressure N/A

If "B" above is checked, how much storage capacity is available above the normal high working level of the

surge tank 250 BBLS.

What is the normal maximum unattended time of lease operation? Sixteen (16) Hours.

What device will be used for measuring oil in this ACT unit?

CHECK ONE: ☐ Positive displacement meter ☐ Weir-type measuring vessel

☐ Positive volume metering chamber ☒ Other; describe Coriolis Meter

Remarks: This LACT will be selling to pipeline.

This is an amended report to add the Kimbeto Wash Unit 767H.

**OPERATOR:**

I hereby certify above information is true and complete to best of my knowledge and subject ACT system will be installed and operated in accordance with Rule 19.15.18.15 NMAC. Approval of this Form C-106 does not eliminate necessity of an approved C-104 prior to running any oil or gas from this system.

Signature [Signature]

Printed Name & Title: Andrea Felix- Regulatory Manager

E-mail Address afelix@enduringresources.com

Date 5/7/19 Telephone (505) 636-9741

**OIL CONSERVATION DIVISION**

Approved by: [Signature]

Title: \_\_\_\_\_

Date: 5/28/19

**INSTRUCTIONS:** Submit one copy of Form C-106 with following attachments to appropriate district office.

- 1) Lease plat showing all wells which will be produced in ACT system.
- 2) Schematic diagram of battery and ACT equipment showing all major components and means employed to prove accuracy of measuring device.
- 3) Letter from transporter agreeing to utilization of ACT system as shown on schematic diagram.



**NOTICE OF INTENTION TO UTILIZE AUTOMATIC CUSTODY TRANSFER EQUIPMENT**  
**Kimbeto Wash Unit 767H, 768H, 769H, 770H, & 771H and Kimbeto Wash Unit 773H, 775H, & 778H**  
**PIPELINE LACT UNIT**

**WELLS TO BE SERVED BY PIPELINE LACT UNIT:**

- **Kimbeto Wash Unit 767H / 30-045-35879 UNIT P (SE/SE) Sec. 17, T23N, R9W, NMPM**
- **Kimbeto Wash Unit 768H / API #30-045-35753 / UNIT P (SE/SE) Sec. 17, T23N, R9W, NMPM**
- **Kimbeto Wash Unit 769H / API #30-045-35754 / UNIT P (SE/SE) Sec. 17, T23N, R9W, NMPM**
- **Kimbeto Wash Unit 770H / API #30-045-35755 / UNIT P (SE/SE) Sec. 17, T23N, R9W, NMPM**
- **Kimbeto Wash Unit 771H / API #30-045-35756 / UNIT P (SE/SE) Sec. 17, T23N, R9W, NMPM**
- **Kimbeto Wash Unit 773H / API #30-045-35832 / UNIT D (NW/NW) Sec. 20, T23N, R9W, NMPM**
- **Kimbeto Wash Unit 775H / API #30-045-35781 / UNIT D (NW/NW) Sec. 20, T23N, R9W, NMPM**
- **Kimbeto Wash Unit 778H / API #30-045-35834 / UNIT D (NW/NW) Sec. 20, T23N, R9W, NMPM**

**19.15.18.15 AUTOMATIC CUSTODY TRANSFER EQUIPMENT:**

A. Oil shall be received and measured in facilities of an approved design. The facilities shall permit the testing of each well at reasonable intervals and may be comprised of manually gauged, closed stock tanks for which the operator of the ACT system has prepared proper strapping tables, or of ACT equipment. The division shall permit ACT equipment's use only after the operator complies with the following. The operator shall file with the division form C-106 and receive approval for use of the ACT equipment prior to transferring oil through the ACT system. The carrier shall not accept delivery of oil through the ACT system until the division has approved form C-106.

- *Summary is attached to Form C-106 Notice of Intent to Utilize Automatic Custody Transfer Equipment*

B. The operator of the ACT system shall submit form C-106 to the appropriate division district office, which is accompanied by the following:

- (1) plat of the lease showing all wells that the any well operator will produce into the ACT system;
- *Attached as part of Form C-106 Notice of Intent*
- (2) schematic diagram of the ACT equipment, showing on the diagram all major components such as surge tanks and their capacity, extra storage tanks and their capacity, transfer pumps, monitors, reroute valves, treaters, samplers, strainers, air and gas eliminators, back pressure valves and metering devices (indicating type and capacity, *i.e.* whether automatic measuring tank, positive volume metering chamber, weir-type measuring vessel or positive displacement meter); the schematic diagram shall also show means employed to prove the measuring device's accuracy; and

- *Attached as part of Form C-106 Notice of Intent*

- (3) letter from transporter agreeing to utilization of ACT system as shown on schematic diagram.

- *Attached as part of Form C-106 Notice of Intent*

C. The division shall not approve form C-106 unless the operator of the ACT system will install and operate the ACT system in compliance with the following requirements.

(1) Provision is made for accurate determination and recording of uncorrected volume and applicable temperature, or of temperature corrected volume. The system's overall accuracy shall equal or surpass manual methods.

- *The LACT system is more accurate when compared to a manual tank sale. It is proved per BLM Onshore Order #4 Measurement of Oil and API MPMS Chapter 4 Proving Systems; with a volumetric prover that meets the requirements set forth in Onshore Order #4. The LACT also has a temperature RTD which will be calibrated semi-annually, unless more frequent verification is requested by the division.*

(2) Provision is made for representative sampling of the oil transferred for determination of API gravity and BS&W content.

- *The LACT is equipped with a flow proportional sampler (sample probe and actuated valve). The sampled fluid is stored in a sealed cylinder that is used for API gravity and S&W determination.*

(3) Provision is made if required by either the oil's producer or the transporter to give adequate assurance that the ACT system runs only merchantable oil.

- *The LACT is equipped with a water cut analyzer that communicates with the flow computer. When the S&W set point is reached the divert valve will engage sending non-merchantable oil to*

***a divert tank. The set point can be adjusted in the flow computer but only if agreed upon by both shipper and producer.***

(4) Provision is made for set-stop counters to stop the flow of oil through the ACT system at or prior to the time the allowable has been run. Counters shall provide non-reset totalizers that are visible for inspection at all times.

- ***The Coriolis meter has non-resettable totalizer which is always visibly available on the LCD display.***

(5) Necessary controls and equipment are enclosed and sealed, or otherwise arranged to provide assurance against, or evidence of, accidental or purposeful mismeasurement resulting from tampering.

- ***Required ports are sealed and tracked in the seal log.***

(6) The ACT system's components are properly sized to ensure operation within the range of their established ratings. All system components that require periodic calibration or inspection for proof of continued accuracy are readily accessible; the frequency and methods of the calibration or inspection shall be as set forth in Paragraph (12) of Subsection C of 19.15.18.15 NMAC.

- ***The Coriolis is proved per BLM Onshore Order #4 Measurement of Oil and API MPMS Chapter 4 Proving Systems; with a volumetric prover that meets the requirements set forth in Onshore Order #4. The prover is NIST traceable and water drawn on a bi-annual basis. Proving will be consistent with Onshore Order #4, unless a variance is granted by the Division. NMOCD representatives are sent the schedule to witness if desired. The temperature transmitter is verified on a semi-annual basis, unless more frequent verification is requested by the Division. The water cut analyzer is calibrated as needed.***

(7) The control and recording system includes adequate fail-safe features that provide assurance against mismeasurement in the event of power failure, or the failure of the ACT system's component parts.

- ***In the event of power failure, the divert valve mechanically goes to "failed state" and no longer sales oil but only sends it to the divert tank.***
- ***All of the historized volume data is stored in flow computer memory with battery backup and is also transmitted by SCADA, multiple times a day, to an office server. So even during a power failure no oil volume is lost.***
- ***In the event of a malfunction, the LACT unit is programmed to shut off and divert valve is forced to close and no longer sales oil but only sends it to the divert tank. The malfunction is also logged by the flow computer.***

(8) The ACT system and allied facilities include fail-safe equipment as may be necessary, including high level switches in the surge tank or overflow storage tank that, in the event of power failure or malfunction of the ACT or other equipment, will shut down artificially lifted wells connected to the ACT system and will shut in flowing wells at the well-head or at the header manifold, in which latter case the operator of the ACT system shall pressure test all flowlines to at least 1½ times the maximum well-head shut-in pressure prior to the ACT system's initial use and every two years thereafter.

- ***Hi level switches are in place and will shut the well in at the inlet to the production unit in the event of a full tank. Flow lines were tested to 1 ½ times shut in pressure at initial construction. Testing will commence every two years to ensure piping integrity.***

(9) As an alternative to the requirements of Paragraph (8) of Subsection C of 19.15.18.15 NMAC the producer shall provide and at all times maintain a minimum of available storage capacity above the normal high working level of the surge tank to receive and hold the amount of oil that may be produced during maximum unattended time of lease operation.

- ***N/A***

(10) In all ACT systems employing automatic measuring tanks, weir-type measuring vessels, positive volume metering chambers or any other volume measuring container, the container and allied components shall be properly calibrated prior to initial use and shall be operated, maintained and inspected as necessary to ensure against incrustation, changes in clingage factors, valve leakage or other leakage and improper action of floats, level detectors, etc.

- ***N/A – Coriolis Meter***

(11) In ACT systems employing positive displacement meters, the meter and allied components shall be properly calibrated prior to initial use and shall be operated, maintained and inspected as necessary to ensure against oil mismeasurement.

- *The Coriolis is proved per BLM Onshore Order #4 Measurement of Oil and API MPMS Chapter 4 Proving Systems; with a volumetric prover that meets the requirements set forth in Onshore Order #4. The prover is NIST traceable and water drawn on a bi-annual basis. Monthly proving will continue per the rule, unless a variance is granted by the Division. NMOCD representatives are sent the schedule to witness if desired. The temperature transmitter is verified on a semi-annual basis, unless more frequent verification is requested by the Division.*

(12) The operator of the ACT system shall check the measuring and recording devices of ACT systems for accuracy at least once each month unless it has obtained an exception to such determination from the division. Where applicable, the operator of the ACT system shall use API standard 1101, Measurement of Petroleum Hydrocarbons by Positive Displacement Meter. Meters may be proved against master meters, portable prover tanks or prover tanks permanently installed on the lease. If the operator of the ACT system uses permanently installed prover tanks, the distance between the opening and closing levels and the provision for determining the opening and closing readings shall be sufficient to detect variations of 5/100 of one percent. The operator of the ACT system shall file reports of determination on the division form entitled "meter test report" or on another acceptable form in duplicate with the appropriate division district office.

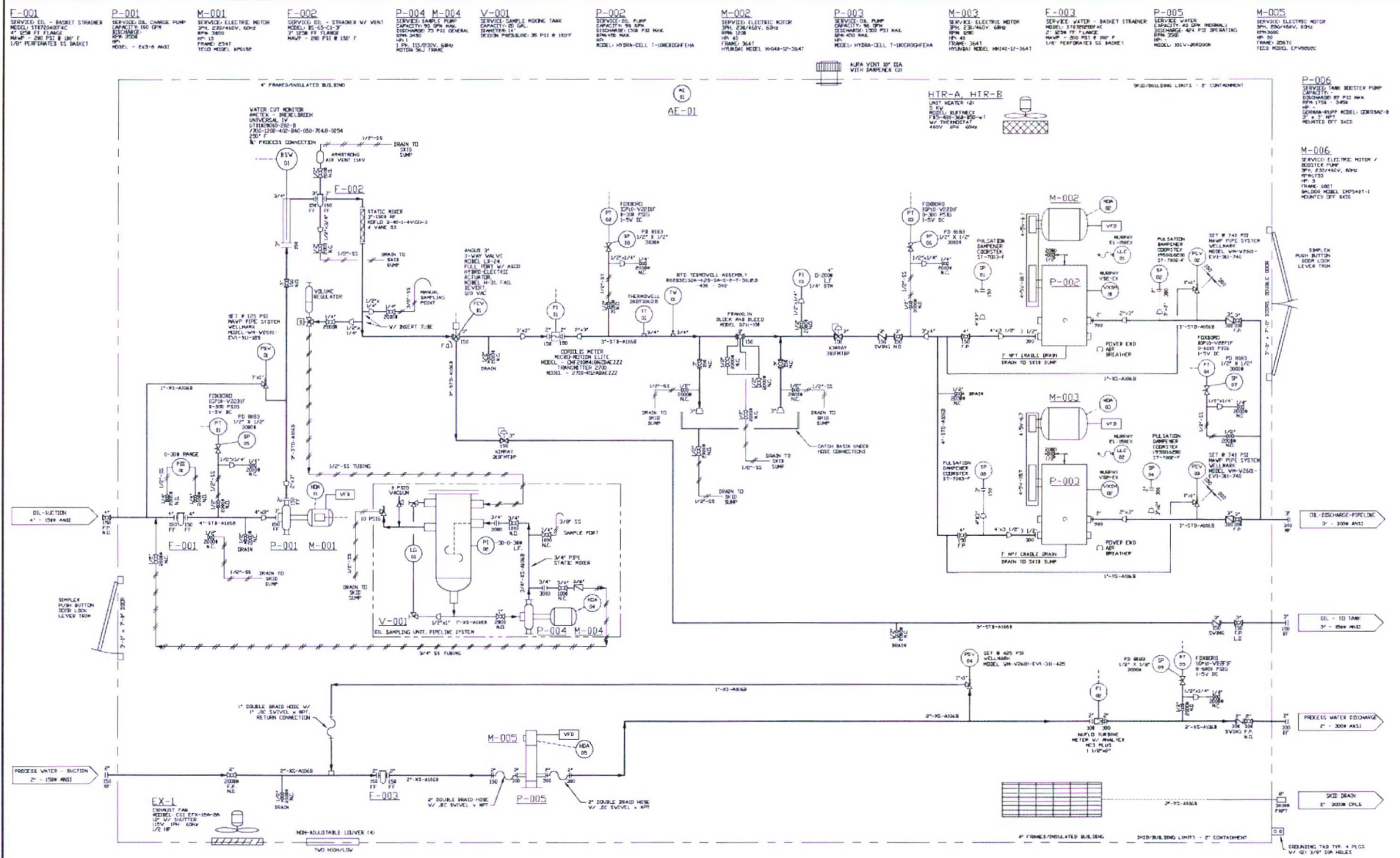
- *The Coriolis is proved per BLM Onshore Order #4 Measurement of Oil and API MPMS Chapter 4 Proving Systems; with a volumetric prover that meets the requirements set forth in Onshore Order #4. The prover is NIST traceable and water drawn on a bi-annual basis. Monthly proving will continue per the rule, unless a variance is granted by the Division. NMOCD representatives are sent the schedule to witness if desired. The temperature transmitter is verified on a semi-annual basis, unless more frequent verification is requested by the Division.*

(13) To obtain an exception to the requirement in Paragraph (12) of Subsection C of 19.15.18.15 NMAC that all measuring and recording devices be checked for accuracy once each month, either the producer or transporter may file a request with the director setting forth facts pertinent to the exception. The application shall include a history of the average factors previously obtained, both tabulated and plotted on a graph of factors versus time, showing that the particular installation has experienced no erratic drift. The applicant shall also furnish evidence that the other interested party has agreed to the exception. The director may then set the frequency for determination of the system's accuracy at the interval which the director deems prudent.

- *N/A*

D. The division may revoke its approval of an ACT system's form C-106 if the system's operator fails to operate it in compliance with 19.15.18.15 NMAC.





NOTES:  
 1. DESIGN FLOW RATE OIL - 6000 BBL/DAY  
 2. DESIGN FLOW RATE WATER - 1.5 GPM AT 60 PSI  
 3. ALL PIPING SECTIONS TO BE HYDROTESTED  
 4. 10% OF ALL PIPING WELDS TO BE X-RAY PER 301.3

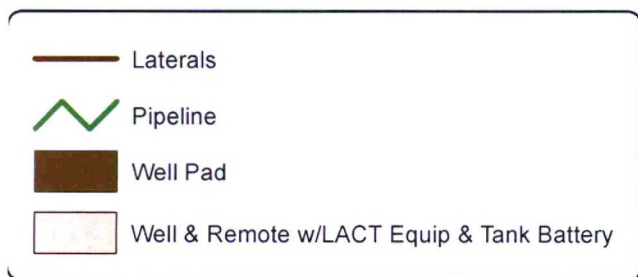
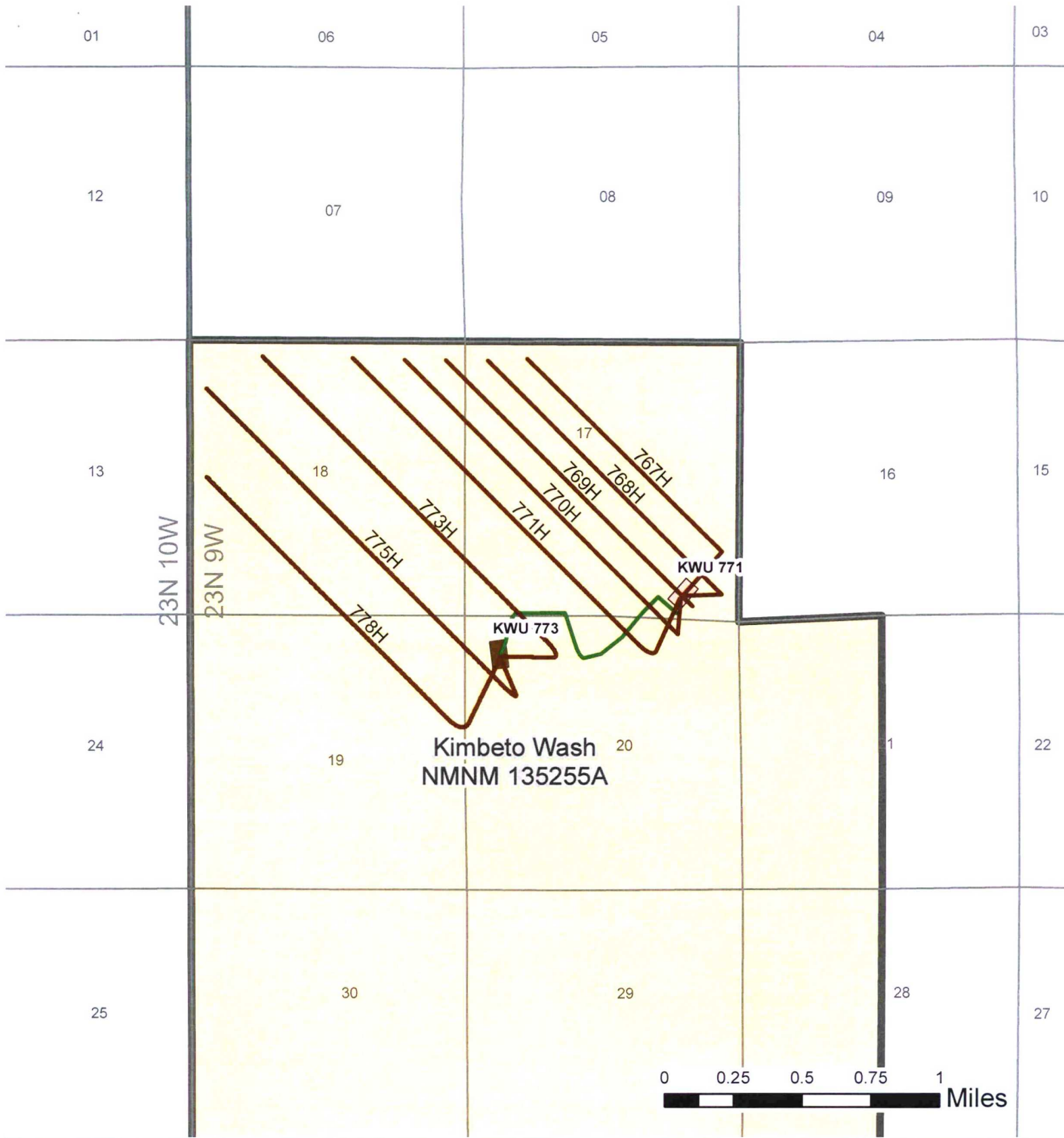
4	CHANGE EXHAUST FAN	JAS	Drawn By	JAS
5	AC-BELT	JAS	Drawn By	JAS
6	TUBING IDENTIFICATIONS	JAS	Checked By	Dec 2018
7	UPDATE OF MODEL NUMBERS	JAS	Drawn By	JAS
8	ISSUE FOR CONSTRUCTION	JAS	Approved	
9	REMOVE TRUCK LEAK LINE	JAS	Drawn By	JAS
10	ADD TRUCK LEAK LINE, MODEL NO.	JAS	Drawn By	JAS
REV	DESCRIPTION	SP	CHG	

**HPI** Since 1962  
**GAS COMPRESSION**

2440 Morning Star Drive, Farmington, NM 87401 (505) 327-0432

**PS PUMPS SERVICE**

Drawing Name:	P & ID	6000 BPD
Project:	ENDING TRANSFER LACT UNIT	
Scale:	NTS	Drawing No.: 2453-01
Rev.		4



# **KWU 771 Pad** **Lease Plat Map** San Juan County, NM

Scale (absolute) -  
1:30,000



Updated: 3/6/2019



District II  
811 S. First Street, Artesia, NM 88210  
Phone: (575) 748-1283 Fax: (575) 748-9720

District III  
1000 Rio Brazos Road, Aztec, NM 87410  
Phone: (505) 334-6178 Fax: (505) 334-6170

District IV  
1220 S. St. Francis Drive, Santa Fe, NM 87505  
Phone: (505) 476-3460 Fax: (505) 476-3462

OIL CONSERVATION DIVISION  
1220 South St. Francis Drive  
Santa Fe, NM 87505

☐ AMENDED REPORT

## WELL LOCATION AND ACREAGE DEDICATION PLAT

*API Number 30-045-35879	*Pool Code 97232	*Pool Name BASIN MANCOS
*Property Code 321239	*Property Name KIMBETO WASH UNIT	*Well Number 767H
*OGARD No. 372286	*Operator Name ENDURING RESOURCES, LLC	*Elevation 6561'

<sup>10</sup> Surface Location

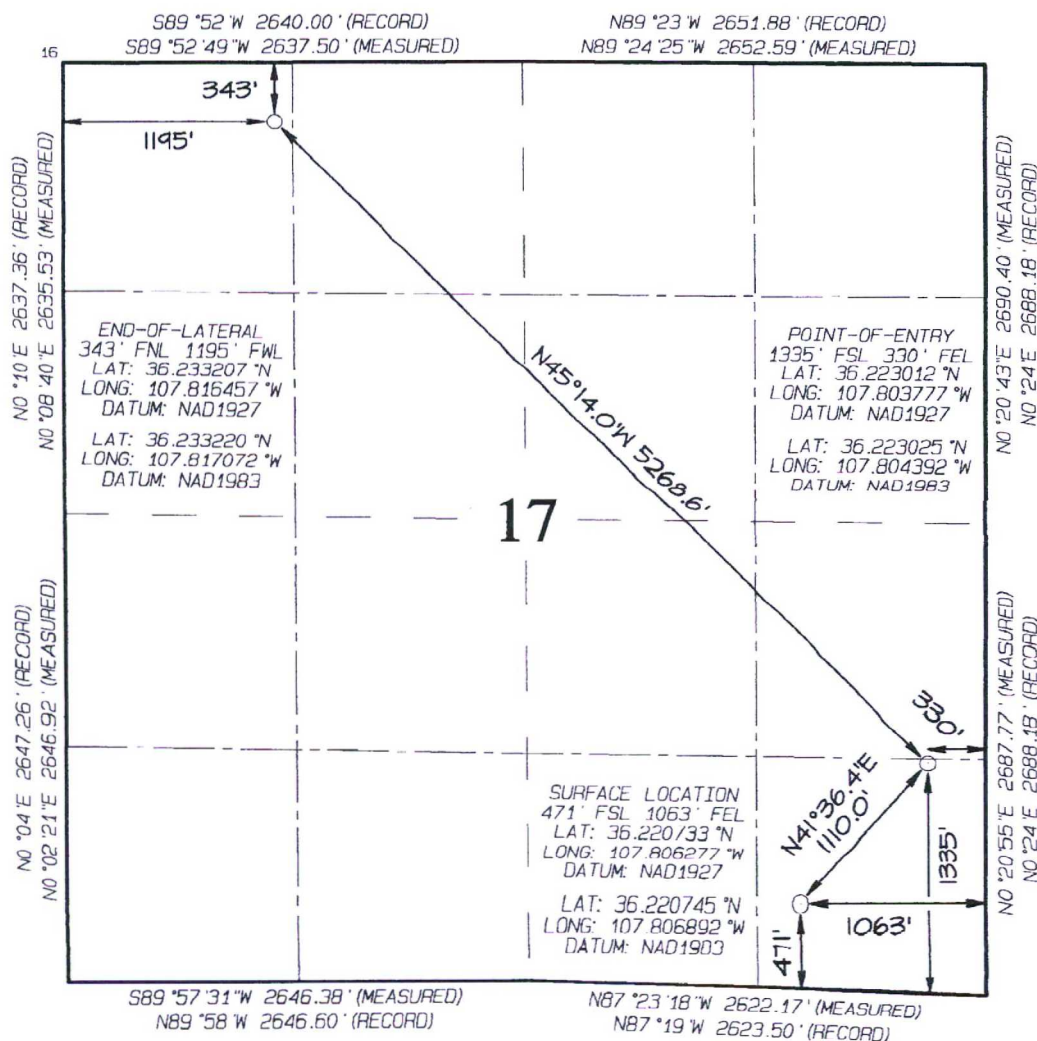
UL or lot no.	Section	Township	Range	Lot Id#	Feet from the	North/South line	Feet from the	East/West line	County
P	17	23N	9W		471	SOUTH	1063	EAST	SAN JUAN

<sup>11</sup> Bottom Hole Location If Different From Surface

UL or lot no.	Section	Township	Range	Lot Idn	Feet from the	North/South line	Feet from the	East/West line	County
D	17	23N	9W		343	NORTH	1195	WEST	SAN JUAN

<sup>12</sup> Dedicated Acres	640.00 Acres Entire Section 17	<sup>13</sup> Joint or Infill	<sup>14</sup> Consolidation Code	<sup>15</sup> Order No. R-14084
-------------------------------	-----------------------------------	-------------------------------	----------------------------------	------------------------------------

NO ALLOWABLE WILL BE ASSIGNED TO THIS COMPLETION UNTIL ALL INTERESTS HAVE BEEN CONSOLIDATED OR A NON-STANDARD UNIT HAS BEEN APPROVED BY THE DIVISION



17 OPERATOR CERTIFICATION

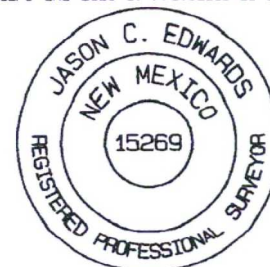
I hereby certify that the information contained herein is true and complete to the best of my knowledge and belief, and that this organization either owns a working interest or unleased mineral interest in the land including the proposed bottom-hole location or has a right to drill this well at this location pursuant to a contract with an owner of such a mineral or working interest, or to a voluntary pooling agreement or a compulsory pooling order heretofore entered by the division.

Signature Larry Granillo Date 3/11/19

Printed Name Larry Granillo

E-mail Address \_\_\_\_\_

**18 SURVEYOR CERTIFICATION**  
I hereby certify that the well location shown on this plat was plotted from field notes of actual surveys made by me or under my supervision, and that the same is true and correct to the best of my belief.  
Date Revised: DECEMBER 17, 2018  
Survey Date: DECEMBER 3, 2015  
Signature and Seal of Professional Surveyor



JASON C. EDWARDS

Certificate Number 15269



District I  
1625 N. French Drive, Hobbs, NM 88240  
Phone: (575) 393-6161 Fax: (575) 393-0720

District II  
811 S. First Street, Artesia, NM 88210  
Phone: (575) 748-1283 Fax: (575) 748-9720

District III  
1000 Rio Brazos Road, Aztec, NM 87410  
Phone: (505) 334-6178 Fax: (505) 334-6170

District IV  
1220 S. St. Francis Drive, Santa Fe, NM 87505  
Phone: (505) 476-3460 Fax: (505) 476-3462

State of New Mexico  
Energy, Minerals & Natural Resources Department

Form C-102  
Revised August 1, 2011

Submit one copy to  
Appropriate District Office

OIL CONSERVATION DIVISION  
1220 South St. Francis Drive  
Santa Fe, NM 87505

☐ AMENDED REPORT

WELL LOCATION AND ACREAGE DEDICATION PLAT

<sup>1</sup> API Number <b>30-045-35153</b>	<sup>2</sup> Pool Code 97232	<sup>3</sup> Pool Name BASIN MANCOS
<sup>4</sup> Property Code 321239	<sup>5</sup> Property Name KIMBETO WASH UNIT	<sup>6</sup> Well Number 768H
<sup>7</sup> GRID No. 372286	<sup>8</sup> Operator Name ENDURING RESOURCES, LLC	<sup>9</sup> Elevation 6561'

<sup>10</sup>Surface Location

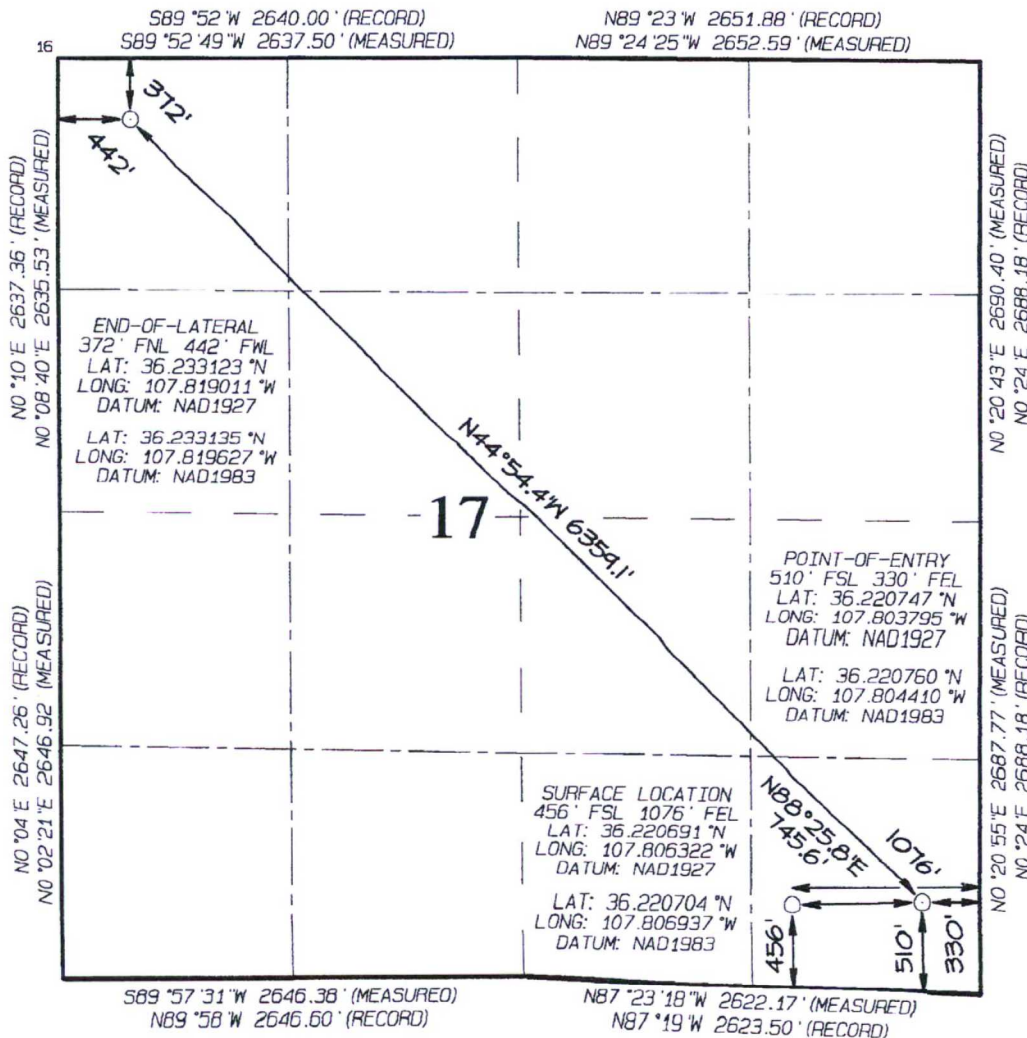
UL or lot no.	Section	Township	Range	Lot Idn	Feet from the	North/South line	Feet from the	East/West line	County
P	17	23N	9W		456	SOUTH	1076	EAST	SAN JUAN

<sup>11</sup>Bottom Hole Location If Different From Surface

UL or lot no.	Section	Township	Range	Lot Idn	Feet from the	North/South line	Feet from the	East/West line	County
D	17	23N	9W		372	NORTH	442	WEST	SAN JUAN

<sup>12</sup> Dedicated Acres 640.00 Acres Entire Section 17	<sup>13</sup> Joint or Infill	<sup>14</sup> Consolidation Code	<sup>15</sup> Order No. R-14084
--	-------------------------------	----------------------------------	------------------------------------

NO ALLOWABLE WILL BE ASSIGNED TO THIS COMPLETION UNTIL ALL INTERESTS HAVE  
BEEN CONSOLIDATED OR A NON-STANDARD UNIT HAS BEEN APPROVED BY THE DIVISION



<sup>17</sup> OPERATOR CERTIFICATION

I hereby certify that the information contained herein is true and complete to the best of my knowledge and belief, and that this organization either owns a working interest or unleased mineral interest in the land including the proposed bottom-hole location or has a right to drill this well at this location pursuant to a contract with an owner of such a mineral or working interest, or to a voluntary pooling agreement or a compulsory pooling order heretofore entered by the division.

Signature: *[Signature]* Date: 5/7/15  
Printed Name: Isaac Granillo  
E-mail Address: isaac@enduringresources.com

<sup>18</sup> SURVEYOR CERTIFICATION

I hereby certify that the well location shown on this plat was plotted from field notes of actual surveys made by me or under my supervision, and that the same is true and correct to the best of my belief.

Date Revised: DECEMBER 17, 2018  
Survey Date: DECEMBER 3, 2015

Signature and Seal of Professional Surveyor



JASON C. EDWARDS

Certificate Number 15269



District I  
1625 N. French Drive, Hobbs, NM 88240  
Phone: (575) 393-6161 Fax: (575) 393-0720

District II  
811 S. First Street, Artesia, NM 88210  
Phone: (575) 748-1283 Fax: (575) 748-9720

District III  
1000 Rio Brazos Road, Aztec, NM 87410  
Phone: (505) 334-6178 Fax: (505) 334-6170

District IV  
1220 S. St. Francis Drive, Santa Fe, NM 87505  
Phone: (505) 476-3460 Fax: (505) 476-3462

State of New Mexico  
Energy, Minerals & Natural Resources Department

Form C-102  
Revised August 1, 2011

Submit one copy to  
Appropriate District Office

OIL CONSERVATION DIVISION

1220 South St. Francis Drive  
Santa Fe, NM 87505

☐ AMENDED REPORT

WELL LOCATION AND ACREAGE DEDICATION PLAT

<sup>1</sup> API Number <b>30-045-35754</b>	<sup>2</sup> Pool Code 97232	<sup>3</sup> Pool Name BASIN MANCOS
<sup>4</sup> Property Code <b>321239</b>	<sup>5</sup> Property Name KIMBETO WASH UNIT	<sup>6</sup> Well Number 769H
<sup>7</sup> GRID No. 372286	<sup>8</sup> Operator Name ENDURING RESOURCES, LLC	<sup>9</sup> Elevation 6561'

<sup>10</sup> Surface Location

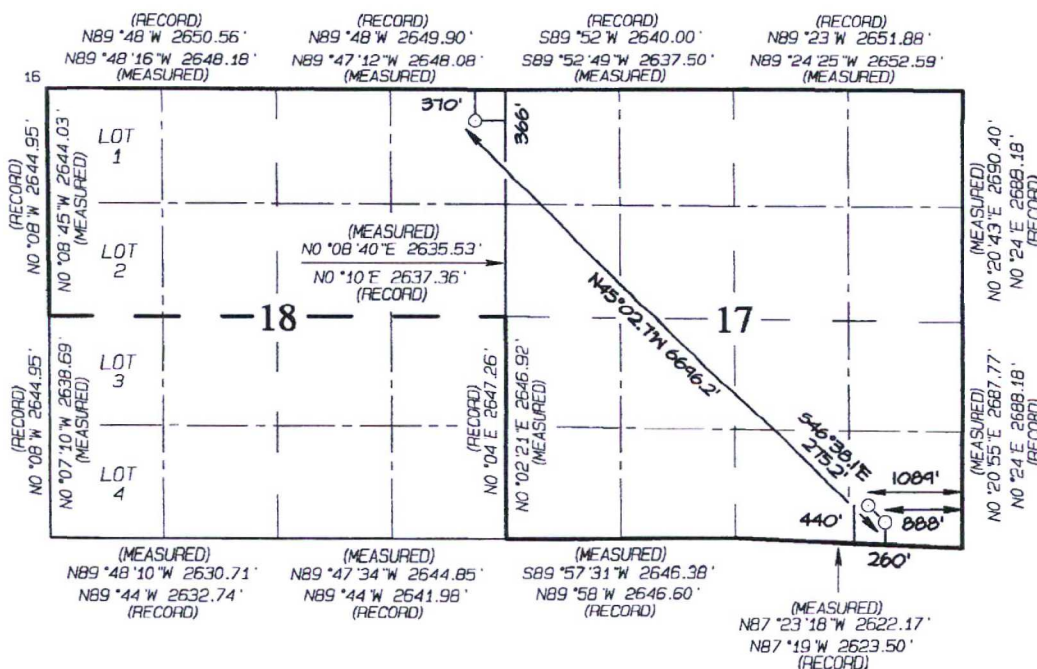
UL or lot no.	Section	Township	Range	Lot Idn	Feet from the	North/South line	Feet from the	East/West line	County
P	17	23N	9W		440	SOUTH	1089	EAST	SAN JUAN

<sup>11</sup> Bottom Hole Location If Different From Surface

UL or lot no.	Section	Township	Range	Lot Idn	Feet from the	North/South line	Feet from the	East/West line	County
A	18	23N	9W		370	NORTH	366	EAST	SAN JUAN

<sup>12</sup> Dedicated Acres 959.88	Entire Section 17 N/2 - Section 18	<sup>13</sup> Joint or Infill	<sup>14</sup> Consolidation Code	<sup>15</sup> Order No. R-14084
---	---------------------------------------	-------------------------------	----------------------------------	------------------------------------

NO ALLOWABLE WILL BE ASSIGNED TO THIS COMPLETION UNTIL ALL INTERESTS HAVE BEEN CONSOLIDATED OR A NON-STANDARD UNIT HAS BEEN APPROVED BY THE DIVISION



END-OF-LATERAL  
370' FNL 366' FEL  
SEC 18, T23N, R9W  
LAT: 36.233131°N  
LONG: 107.821751°W  
DATUM: NAD1927  
  
LAT: 36.233143°N  
LONG: 107.822367°W  
DATUM: NAD1983

SURFACE LOCATION  
440' FSL 1089' FEL  
SEC 17, T23N, R9W  
LAT: 36.220650°N  
LONG: 107.806366°W  
DATUM: NAD1927  
  
LAT: 36.220663°N  
LONG: 107.806982°W  
DATUM: NAD1983

POINT-OF-ENTRY  
260' FSL 888' FEL  
SEC 17, T23N, R9W  
LAT: 36.220131°N  
LONG: 107.805688°W  
DATUM: NAD1927  
  
LAT: 36.220144°N  
LONG: 107.806304°W  
DATUM: NAD1983

<sup>17</sup> OPERATOR CERTIFICATION

I hereby certify that the information contained herein is true and complete to the best of my knowledge and belief, and that this organization either owns a working interest or unleased mineral interest in the land including the proposed bottom-hole location or has a right to drill this well at this location pursuant to a contract with an owner of such a mineral or working interest, or to a voluntary pooling agreement or a compulsory pooling order heretofore entered by the division.

Signature: *Jason C. Edwards* Date: 5/7/19

Printed Name

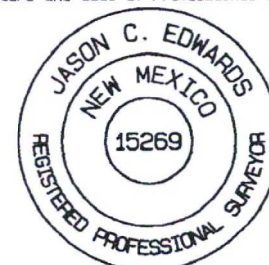
E-mail Address

<sup>18</sup> SURVEYOR CERTIFICATION

I hereby certify that the well location shown on this plat was plotted from field notes of actual surveys made by me or under my supervision, and that the same is true and correct to the best of my belief.

Date Revised: DECEMBER 17, 2018  
Survey Date: DECEMBER 3, 2015

Signature and Seal of Professional Surveyor



JASON C. EDWARDS

Certificate Number 15269



District I  
1625 N. French Drive, Hobbs, NM 88240  
Phone: (575) 393-6161 Fax: (575) 393-0720

District II  
811 S. First Street, Artesia, NM 88210  
Phone: (575) 748-1283 Fax: (575) 748-9720

District III  
1000 Rio Brazos Road, Aztec, NM 87410  
Phone: (505) 334-6178 Fax: (505) 334-6170

District IV  
1220 S. St. Francis Drive, Santa Fe, NM 87505  
Phone: (505) 476-3460 Fax: (505) 476-3462

State of New Mexico  
Energy, Minerals & Natural Resources Department

Form C-102  
Revised August 1, 2011

Submit one copy to  
Appropriate District Office

OIL CONSERVATION DIVISION  
1220 South St. Francis Drive  
Santa Fe, NM 87505

☐ AMENDED REPORT

WELL LOCATION AND ACREAGE DEDICATION PLAT

*API Number <b>30-045-35755</b>		*Pool Code 97232	*Pool Name BASIN MANCOS
*Property Code 321239	*Property Name KIMBETO WASH UNIT		*Well Number 770H
*OGRID No. 372286	*Operator Name ENDURING RESOURCES, LLC		*Elevation 6561'

10 Surface Location

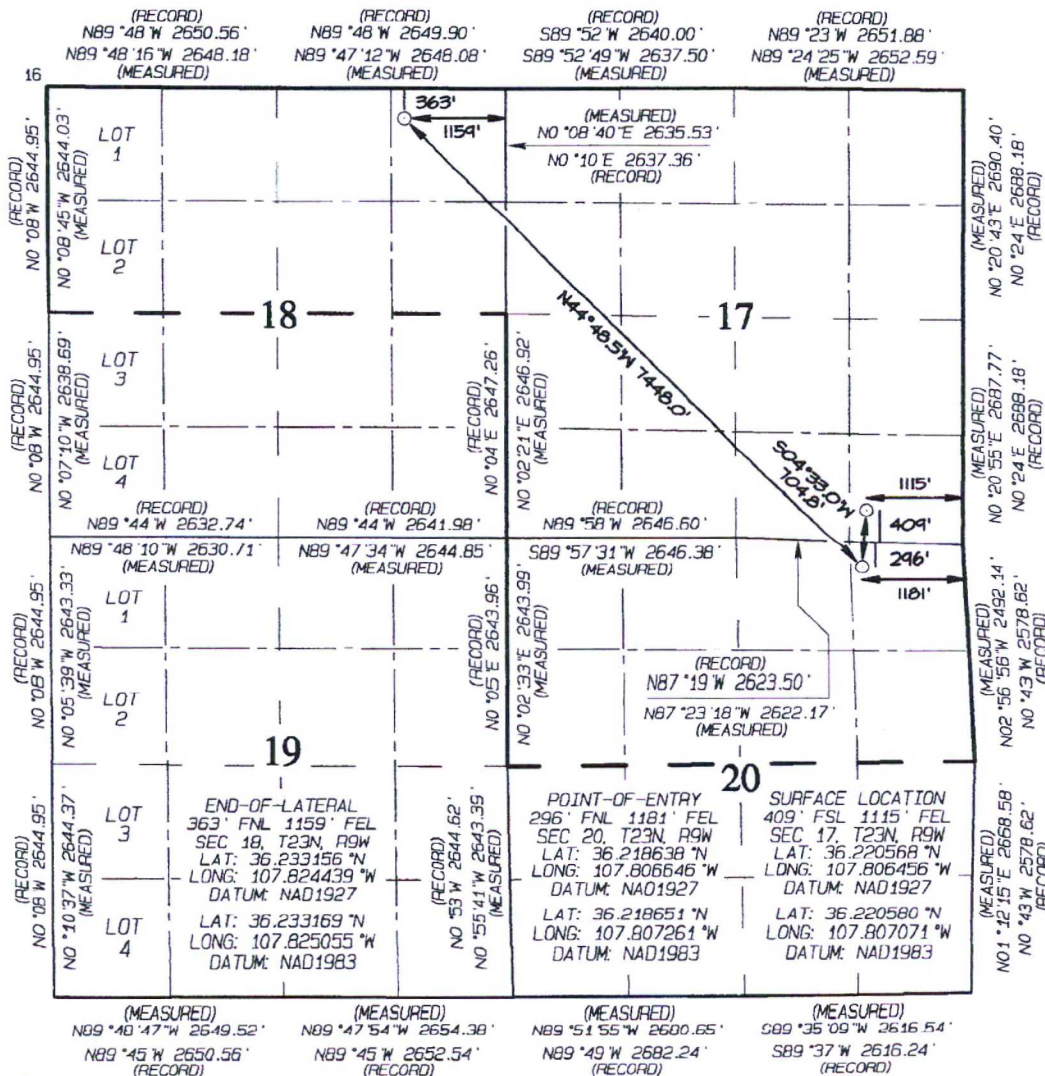
UL or lot no.	Section	Township	Range	Lot Idn	Feet from the	North/South line	Feet from the	East/West line	County
P	17	23N	9W		409	SOUTH	1115	EAST	SAN JUAN

11 Bottom Hole Location If Different From Surface

UL or lot no.	Section	Township	Range	Lot Idn	Feet from the	North/South line	Feet from the	East/West line	County
A	18	23N	9W		363	NORTH	1159	EAST	SAN JUAN

12 Dedicated Acres 1279.88	Entire Section 17 N/2 - Section 18 N/2 - Section 20	13 Joint or Infill	14 Consolidation Code	15 Order No. R-14084
-------------------------------	---	--------------------	-----------------------	-------------------------

NO ALLOWABLE WILL BE ASSIGNED TO THIS COMPLETION UNTIL ALL INTERESTS HAVE BEEN CONSOLIDATED OR A NON-STANDARD UNIT HAS BEEN APPROVED BY THE DIVISION



17 OPERATOR CERTIFICATION

I hereby certify that the information contained herein is true and complete to the best of my knowledge and belief, and that this organization either owns a working interest or unleased mineral interest in the land including the proposed bottom-hole location or has a right to drill this well at this location pursuant to a contract with an owner of such a mineral or working interest, or to a voluntary pooling agreement or a compulsory pooling order heretofore entered by the division.

Signature: *Jason C. Edwards* Date: 5/7/15  
Printed Name: Jason C. Edwards  
E-mail Address:

18 SURVEYOR CERTIFICATION

I hereby certify that the well location shown on this plat was plotted from field notes of actual surveys made by me or under my supervision, and that the same is true and correct to the best of my belief.

Date Revised: DECEMBER 17, 2018  
Survey Date: DECEMBER 3, 2015

Signature and Seal of Professional Surveyor



JASON C. EDWARDS

Certificate Number 15269



District I  
1625 N. French Drive, Hobbs, NM 88240  
Phone: (575) 393-6161 Fax: (575) 393-0720

District II  
811 S. First Street, Artesia, NM 88210  
Phone: (575) 748-1283 Fax: (575) 748-9720

District III  
1000 Rio Brazos Road, Aztec, NM 87410  
Phone: (505) 334-6178 Fax: (505) 334-6170

District IV  
1220 S. St. Francis Drive, Santa Fe, NM 87505  
Phone: (505) 476-3460 Fax: (505) 476-3462

State of New Mexico  
Energy, Minerals & Natural Resources Department

Form C-102  
Revised August 1, 2011

Submit one copy to  
Appropriate District Office

OIL CONSERVATION DIVISION

1220 South St. Francis Drive  
Santa Fe, NM 87505

☐ AMENDED REPORT

AS DRILLED

WELL LOCATION AND ACREAGE DEDICATION PLAT

*API Number 30-045-35756		*Pool Code 97232	*Pool Name BASIN MANCOS
*Property Code 321235	*Property Name KIMBETO WASH UNIT		*Well Number 771H
*GRID No. 372286	*Operator Name ENDURING RESOURCES, LLC		*Elevation 6561

<sup>10</sup> Surface Location

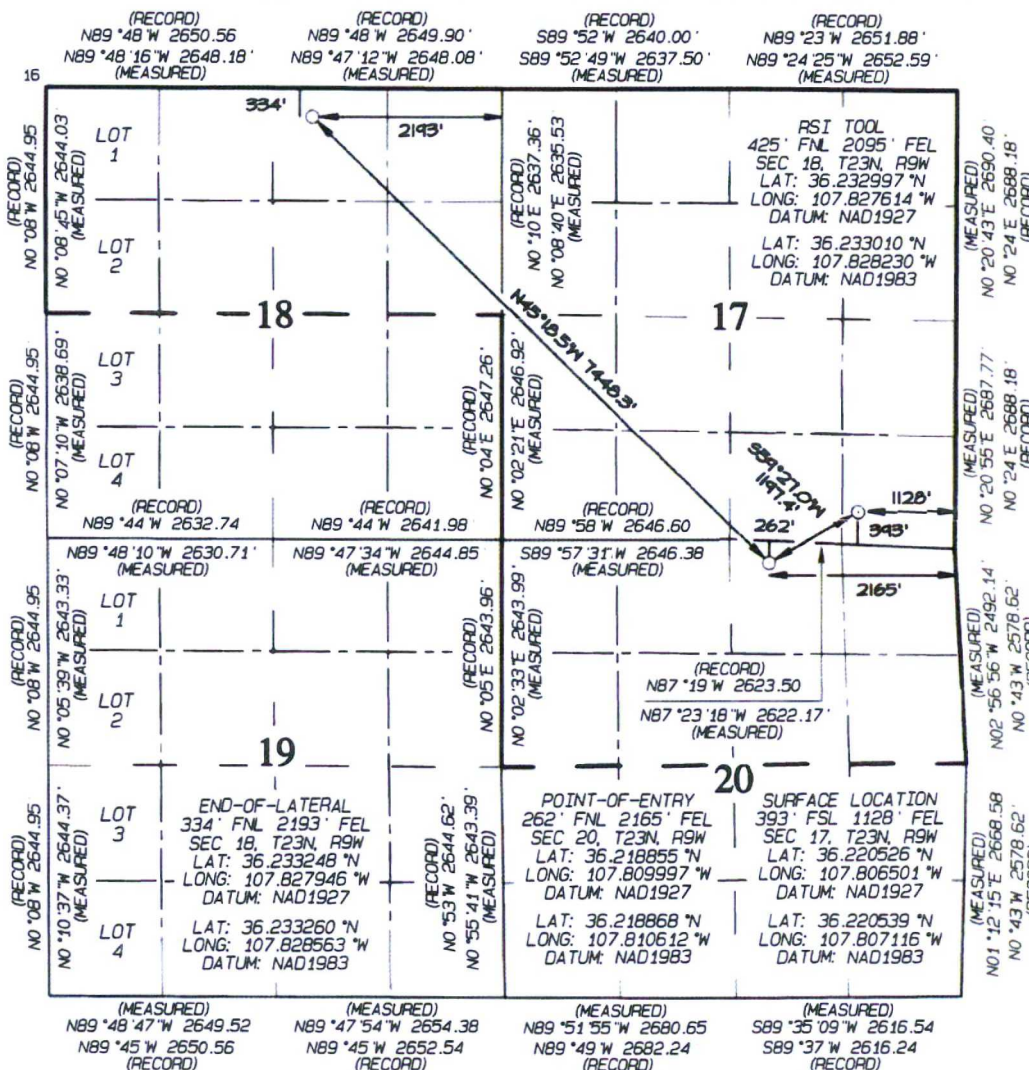
UL or lot no.	Section	Township	Range	Lot Idn	Feet from the	North/South line	Feet from the	East/West line	County
P	17	23N	9W		393	SOUTH	1128	EAST	SAN JUAN

<sup>11</sup> Bottom Hole Location If Different From Surface

UL or lot no.	Section	Township	Range	Lot Idn	Feet from the	North/South line	Feet from the	East/West line	County
B	18	23N	9W		334	NORTH	2193	EAST	SAN JUAN

<sup>12</sup> Dedicated Acres 1279.88	Entire Section 17 N/2 - Section 18 N/2 - Section 20	<sup>13</sup> Joint or Infill	<sup>14</sup> Consolidation Code	<sup>15</sup> Order No. R-14084
--	---	-------------------------------	----------------------------------	------------------------------------

NO ALLOWABLE WILL BE ASSIGNED TO THIS COMPLETION UNTIL ALL INTERESTS HAVE BEEN CONSOLIDATED OR A NON-STANDARD UNIT HAS BEEN APPROVED BY THE DIVISION



<sup>17</sup> OPERATOR CERTIFICATION

I hereby certify that the information contained herein is true and complete to the best of my knowledge and belief, and that this organization either owns a working interest or unleased mineral interest in the land including the proposed bottom-hole location or has a right to drill this well at this location pursuant to a contract with an owner of such a mineral or working interest, or to a voluntary pooling agreement or a compulsory pooling order heretofore entered by the division.

Signature: *Lacey Granillo* Date: 5/7/15

Printed Name: Lacey Granillo

E-mail Address:

<sup>18</sup> SURVEYOR CERTIFICATION

I hereby certify that the well location shown on this plat was plotted from field notes of actual surveys made by me or under my supervision, and that the same is true and correct to the best of my belief.

Date Revised: JUNE 9, 2016  
Survey Date: DECEMBER 3, 2015

Signature and Seal of Professional Surveyor



JASON C. EDWARDS

Certificate Number 15269



District I  
1625 N. French Drive, Hobbs, NM 88240  
Phone: (575) 393-6161 Fax: (575) 393-0720

District II  
811 S. First Street, Artesia, NM 88210  
Phone: (575) 748-1283 Fax: (575) 748-9720

District III  
1000 Rio Brazos Road, Aztec, NM 87410  
Phone: (505) 334-6178 Fax: (505) 334-6170

District IV  
1220 S. St. Francis Drive, Santa Fe, NM 87505  
Phone: (505) 476-3460 Fax: (505) 476-3462

State of New Mexico  
Energy, Minerals & Natural Resources Department

Form C-102  
Revised August 1, 2011

Submit one copy to  
Appropriate District Office

OIL CONSERVATION DIVISION  
1220 South St. Francis Drive  
Santa Fe, NM 87505

☐ AMENDED REPORT

WELL LOCATION AND ACREAGE DEDICATION PLAT

1 API Number <b>30-045-35832</b>		2 Pool Code 97232		3 Pool Name BASIN MANCOS GAS POOL	
4 Property Code <b>321239</b>		5 Property Name KIMBE TO WASH UNIT			6 Well Number 773H
7 GRID No. 372286		8 Operator Name ENDURING RESOURCES, LLC			9 Elevation 6538'

10 Surface Location

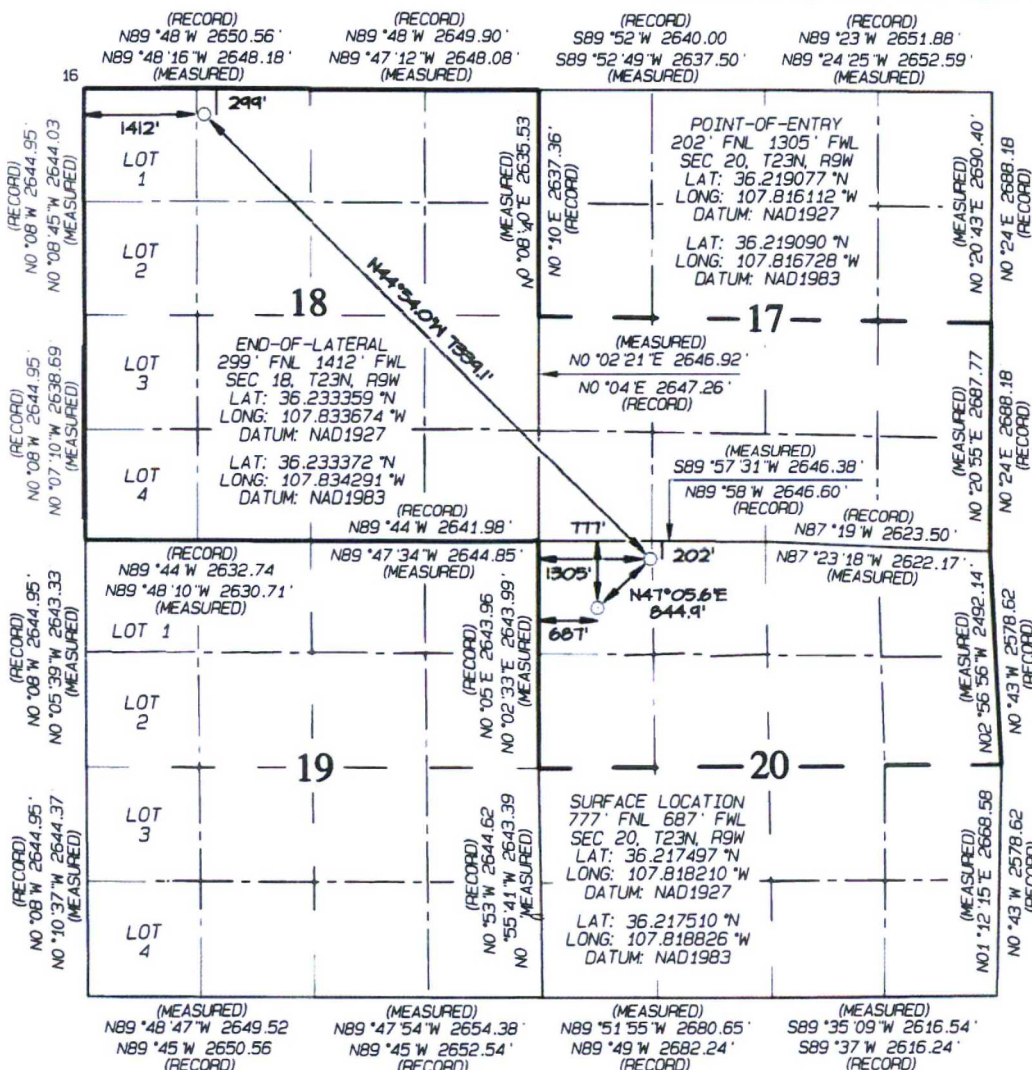
UL or lot no.	Section	Township	Range	Lot Idn	Feet from the	North/South line	Feet from the	East/West line	County
D	20	23N	9W		777	NORTH	687	WEST	SAN JUAN

11 Bottom Hole Location If Different From Surface

UL or lot no.	Section	Township	Range	Lot Idn	Feet from the	North/South line	Feet from the	East/West line	County
C	18	23N	9W		299	NORTH	1412	WEST	SAN JUAN

12 Dedicated Acres 1279.45		S/2 - Section 17 Entire Section 18 N/2 - Section 20		13 Joint or Infill	14 Consolidation Code	15 Order No. R-14084
-------------------------------	--	---	--	--------------------	-----------------------	-------------------------

NO ALLOWABLE WILL BE ASSIGNED TO THIS COMPLETION  
UNTIL ALL INTERESTS HAVE BEEN CONSOLIDATED OR A  
NON-STANDARD UNIT HAS BEEN APPROVED BY THE DIVISION



17 OPERATOR CERTIFICATION

I hereby certify that the information contained herein is true and complete to the best of my knowledge and belief, and that this organization either owns a working interest or unleased mineral interest in the land including the proposed bottom-hole location or has a right to drill this well at this location pursuant to a contract with an owner of such a mineral or working interest, or to a voluntary pooling agreement or a compulsory pooling order heretofore entered by the division.

Signature: *[Signature]* Date: 5/7/15  
Printed Name: *[Name]*  
E-mail Address:

18 SURVEYOR CERTIFICATION

I hereby certify that the well location shown on this plat was plotted from field notes of actual surveys made by me or under my supervision, and that the same is true and correct to the best of my belief.

Date Revised: JANUARY 24, 2017  
Date of Survey: JULY 16, 2015

Signature and Seal of Professional Surveyor



JASON C. EDWARDS

Certificate Number 15269



District I  
1625 N. French Drive, Hobbs, NM 88240  
Phone: (575) 393-6161 Fax: (575) 393-0720

District II  
811 S. First Street, Artesia, NM 88210  
Phone: (575) 748-1283 Fax: (575) 748-9720

District III  
1000 Rio Brazos Road, Aztec, NM 87410  
Phone: (505) 334-6178 Fax: (505) 334-6170

District IV  
1220 S. St. Francis Drive, Santa Fe, NM 87505  
Phone: (505) 476-3460 Fax: (505) 476-3462

State of New Mexico  
Energy, Minerals & Natural Resources Department

Form C-102  
Revised August 1, 2011

Submit one copy to  
Appropriate District Office

OIL CONSERVATION DIVISION

1220 South St. Francis Drive  
Santa Fe, NM 87505

☐ AMENDED REPORT

WELL LOCATION AND ACREAGE DEDICATION PLAT

*API Number <b>30-045-35781</b>	*Pool Code 97232	*Pool Name BASIN MANCOS
*Property Code <b>321239</b>	*Property Name KIMBETO WASH UNIT	*Well Number 775H
*OGRID No. 372286	*Operator Name ENDURING RESOURCES LLC	*Elevation 6538'

<sup>10</sup> Surface Location

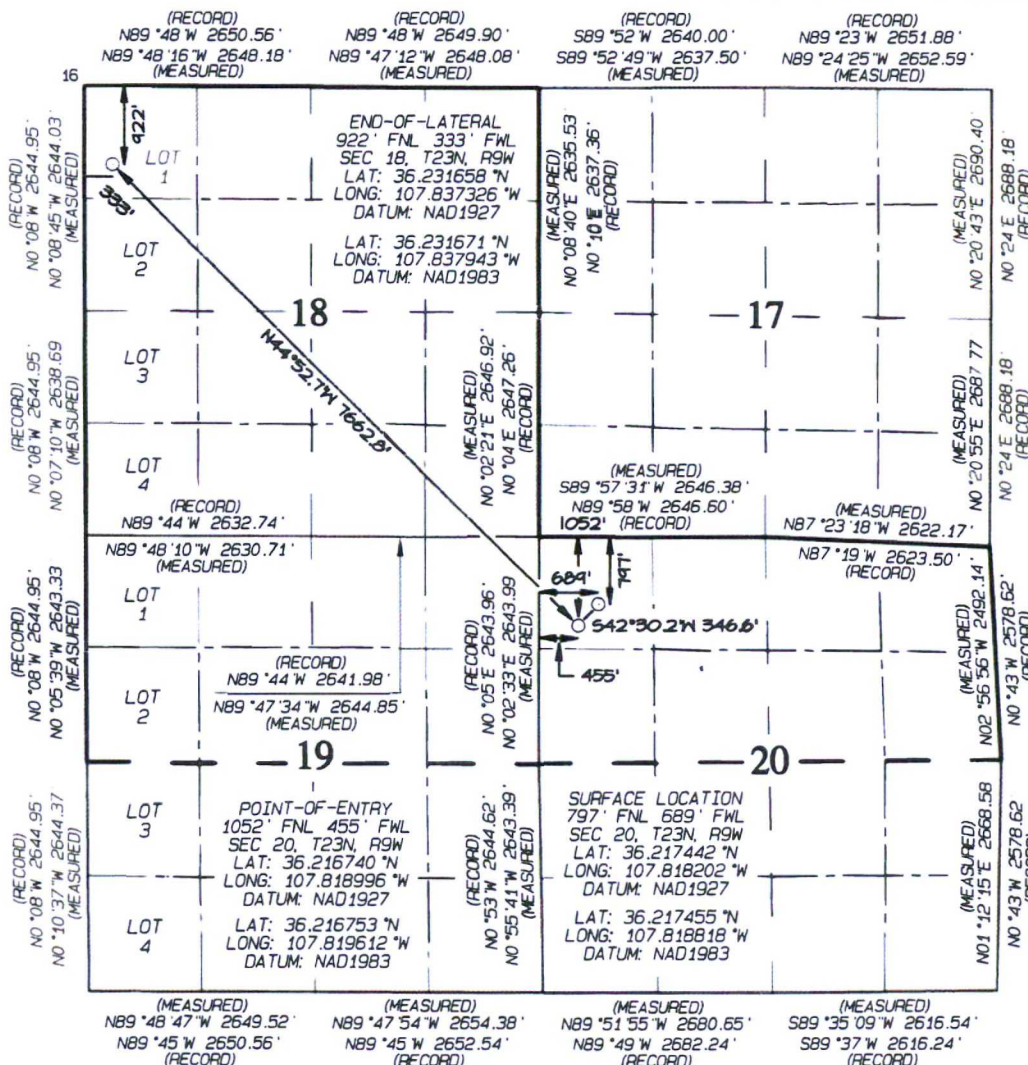
UL or lot no.	Section	Township	Range	Lot Idn	Feet from the	North/South line	Feet from the	East/West line	County
D	20	23N	9W		797	NORTH	689	WEST	SAN JUAN

<sup>11</sup> Bottom Hole Location If Different From Surface

UL or lot no.	Section	Township	Range	Lot Idn	Feet from the	North/South line	Feet from the	East/West line	County
D	18	23N	9W	1	922	NORTH	333	WEST	SAN JUAN

<sup>12</sup> Dedicated Acres 1278.98	Entire Section 18 N/2 - Section 19 N/2 - Section 20	<sup>13</sup> Joint or Infill	<sup>14</sup> Consolidation Code	<sup>15</sup> Order No.
--	---	-------------------------------	----------------------------------	-------------------------

NO ALLOWABLE WILL BE ASSIGNED TO THIS COMPLETION  
UNTIL ALL INTERESTS HAVE BEEN CONSOLIDATED OR A  
NON-STANDARD UNIT HAS BEEN APPROVED BY THE DIVISION



<sup>17</sup> OPERATOR CERTIFICATION

I hereby certify that the information contained herein is true and complete to the best of my knowledge and belief, and that this organization either owns a working interest or unleased mineral interest in the land including the proposed bottom-hole location or has a right to drill this well at this location pursuant to a contract with an owner of such a mineral or working interest, or to a voluntary pooling agreement or a compulsory pooling order heretofore entered by the division.

Signature: *[Signature]* Date: 5/7/15

Printed Name: *[Signature]*

E-mail Address:

<sup>18</sup> SURVEYOR CERTIFICATION

I hereby certify that the well location shown on this plat was plotted from field notes of actual surveys made by me or under my supervision, and that the same is true and correct to the best of my belief.

Date Revised: MAY 4, 2016  
Date of Survey: JULY 16, 2015

Signature and Seal of Professional Surveyor



JASON C. EDWARDS

Certificate Number 15269



District II  
811 S. First Street, Artesia, NM 88210  
Phone: (575) 748-1283 Fax: (575) 748-9720

District III  
1000 Rio Brazos Road, Aztec, NM 87410  
Phone: (505) 334-6178 Fax: (505) 334-6170

District IV  
1220 S. St. Francis Drive, Santa Fe, NM 87505  
Phone: (505) 476-3460 Fax: (505) 476-3462

## OIL CONSERVATION DIVISION

1220 South St. Francis Drive  
Santa Fe, NM 87505

Submit one copy to  
Appropriate District Office

☐ AMENDED REPORT

## WELL LOCATION AND ACREAGE DEDICATION PLAT

'API Number 30-045-35834	'Pool Code 97232	'Pool Name BASIN MANCOS GAS POOL
'Property Code 301039	'Property Name KIMBETO WASH UNIT	'Well Number 778H
'GRID No. 372286	'Operator Name ENDURING RESOURCES, LLC	'Elevation 6538'

<sup>10</sup> Surface Location

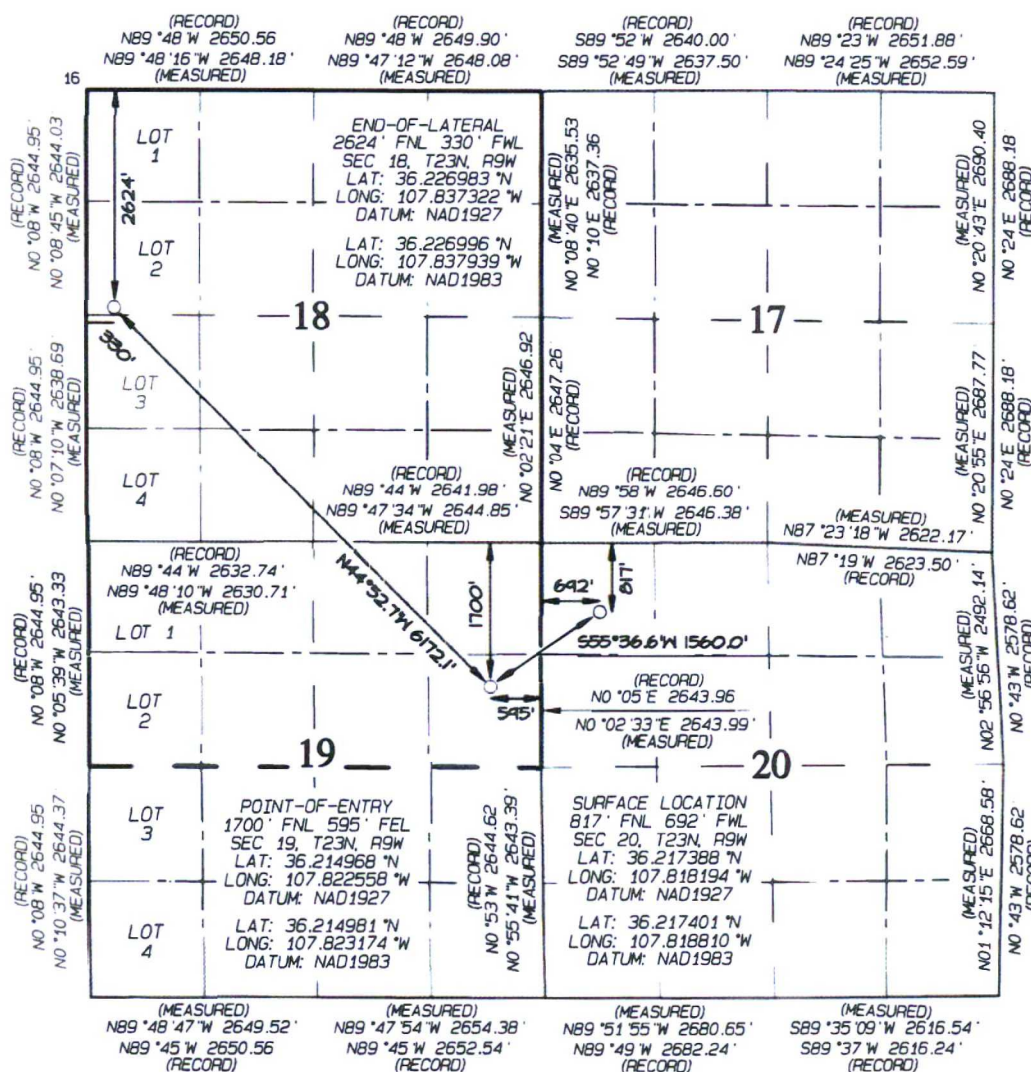
UL or lot no.	Section	Township	Range	Lot Idn	Feet from the	North/South line	Feet from the	East/West line	County
D	20	23N	9W		817	NORTH	692	WEST	SAN JUAN

<sup>11</sup> Bottom Hole Location If Different From Surface

UL or lot no.	Section	Township	Range	Lot Idn	Feet from the	North/South line	Feet from the	East/West line	County
E	18	23N	9W	2	2624	NORTH	330	WEST	SAN JUAN

12	Dedicated Acres 958.98	Entire - Section 18 N/2 - Section 19	13 Joint or Infill	14 Consolidation Code	15 Order No. R-14084
----	---------------------------	---	--------------------	-----------------------	-------------------------

NO ALLOWABLE WILL BE ASSIGNED TO THIS COMPLETION UNTIL ALL INTERESTS HAVE BEEN CONSOLIDATED OR A NON-STANDARD UNIT HAS BEEN APPROVED BY THE DIVISION



## 17 OPERATOR CERTIFICATION

I hereby certify that the information contained herein is true and complete to the best of my knowledge and belief, and that this organization either owns a working interest or unleased mineral interest in the land including the proposed bottom-hole location or has a right to drill this well at this location pursuant to a contract with an owner of such a mineral or working interest or a pooling agreement or a compulsory pooling order heretofore entered by the division.

Signature [Signature] Date 5/7/19

Lacey Granillo

Printed Name  
lgranillo@enduringresources.com

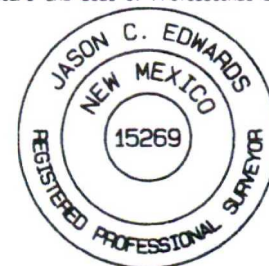
E-mail Address

## 18 SURVEYOR CERTIFICATION

I hereby certify that the well location shown on this plat was plotted from field notes of actual surveys made by me or under my supervision, and that the same is true and correct to the best of my belief.

Date Revised: JANUARY 24, 2017  
Date of Survey: JULY 16, 2015

Signature and Seal of Professional Surveyor



**JASON C. EDWARDS**  
Certificate Number 15269

(Hosts Facilities for the Kimbeto Wash Unit 773H, 775H, and 778H Wells)


$$1'' = 100'$$



## **Lacey Granillo**

---

**From:** Michael Bullock <michael.bullock@whiptailmidstream.com>  
**Sent:** Tuesday, April 30, 2019 12:53 PM  
**To:** Andrea Felix; Ernie Johnson  
**Cc:** Lacey Granillo; Dale Minschwaner; Jude Dysart  
**Subject:** RE: C-106 Letter from Transporter: Kimbeto Wash 767H & 773H modification

Andrea,

We approve the use of the Pipeline Transfer LACT equipment on the Kimbeto Wash 771H well pad to transfer product from the well below to Whiptail Midstream, LLC's pipeline system.

- KIMBETO WASH UNIT #767H / 30-045-35879 UNIT P (SE/SE) Sec. 17, T23N, R9W, NMPM

Michael Bullock  
Office: 918.900.2603  
Cell: 405.818.8618

---

**From:** Andrea Felix <AFelix@enduringresources.com>  
**Sent:** Saturday, April 27, 2019 8:04 AM  
**To:** Michael Bullock <michael.bullock@whiptailmidstream.com>; Ernie Johnson <ernie.johnson@whiptailmidstream.com>  
**Cc:** Lacey Granillo <LGranillo@enduringresources.com>  
**Subject:** C-106 Letter from Transporter: Kimbeto Wash 767H & 773H modification  
**Importance:** High

Good morning Michael,

Enduring Resources is working on the C-106 Letter from Transporter submittal to NMOCD for the Kimbeto Wash Unit 767H & 773H well pad. Please reply back to this email with your approval.

This request is to modify by adding the Kimbeto Wash Unit 767H well to the LACT already approved by Whiptail ad NMOCD.



Enduring Resources IV, LLC. is requesting approval from the transporter to utilize Pipeline Transfer LACT equipment on the **KIMBETO WASH UNIT 767H & 773H** well pad. Product from the below listed wells would be produced through the LACT equipment, gathered through Enduring pipeline, and transferred into Whiptail Midstream, LLC's (transporter) pipeline system through a check meter. Whiptail Midstream, LLC will be responsible for transporting Enduring Resources IV, LLC's product to sales. The LACT unit will be proved per regulatory requirements.

**NOTICE OF INTENTION TO UTILIZE AUTOMATIC CUSTODY TRANSFER EQUIPMENT**

**Kimbeto Wash Unit 767H, 768H, 769H, 770H, & 771H and Kimbeto Wash Unit 773H, 775H, & 778H PIPELINE LACT UNIT PIPELINE LACT UNIT**

➤ **Need to add:**

- KIMBETO WASH UNIT #767H / 30-045-35879 UNIT P (SE/SE) Sec. 17, T23N, R9W, NMPPM

➤ **Already Approved:**

- KIMBETO WASH UNIT 768H / API #30-045-35753 / UNIT P (SE/SE) Sec. 17, T23N, R9W, NMPPM
- KIMBETO WASH UNIT 769H / API #30-045-35754 / UNIT P (SE/SE) Sec. 17, T23N, R9W, NMPPM
- KIMBETO WASH UNIT 770H / API #30-045-35755 / UNIT P (SE/SE) Sec. 17, T23N, R9W, NMPPM
- KIMBETO WASH UNIT 771H / API #30-045-35756 / UNIT P (SE/SE) Sec. 17, T23N, R9W, NMPPM
- KIMBETO WASH UNIT 773H / API #30-045-35832 / UNIT D (NW/NW) Sec. 20, T23N, R9W, NMPPM
- KIMBETO WASH UNIT 775H / API #30-045-35781 / UNIT D (NW/NW) Sec. 20, T23N, R9W, NMPPM
- KIMBETO WASH UNIT 778H / API #30-045-35834 / UNIT D (NW/NW) Sec. 20, T23N, R9W, NMPPM

Thank you,

**Andrea R Felix, RWA**

Regulatory Manager  
Enduring Resources  
200 Energy Court  
Farmington, NM 87401  
Office: 505-636-9741  
Cell: 505-386-8205

