

RECEIVED

Form 3160-5  
(August 2007)UNITED STATES  
DEPARTMENT OF THE INTERIOR  
BUREAU OF LAND MANAGEMENTFORM APPROVED  
OMB No. 1004-0137  
Expires: July 31, 2010Farmington Field Office  
Bureau of Land Management**SUNDRY NOTICES AND REPORTS ON WELLS**  
**Do not use this form for proposals to drill or to re-enter an abandoned well. Use Form 3160-3 (APD) for such proposals.**

5. Lease Serial No.

**SF-079634**

6. If Indian, Allottee or Tribe Name

SUBMIT IN TRIPLICATE - Other instructions on page 2.

1. Type of Well

☐ Oil Well☒ Gas Well☐ Other

2. Name of Operator

**Hilcorp Energy Company**

3a. Address

**382 Road 3100, Aztec, NM 87410**

3b. Phone No. (include area code)

**505-599-3400**

7. If Unit of CA/Agreement, Name and/or No.

8. Well Name and No.

**McClanahan 20E**

9. API Well No.

**30-045-24106**

4. Location of Well (Footage, Sec., T., R., M., or Survey Description)

**Surface Unit F (SENW) 1840' FNL & 1660' FWL, Sec. 13, T28N, R10W**

10. Field and Pool or Exploratory Area

**Blanco MV/Armenta GL/Basin DK**

11. Country or Parish, State

**San Juan, New Mexico**

12. CHECK THE APPROPRIATE BOX(ES) TO INDICATE NATURE OF NOTICE, REPORT OR OTHER DATA

## TYPE OF SUBMISSION

## TYPE OF ACTION

☒ Notice of Intent☐ Acidize☐ Deepen☐ Production (Start/Resume)☐ Water Shut-Off☐ Subsequent Report☐ Alter Casing☐ Fracture Treat☐ Reclamation☐ Well Integrity☐ Final Abandonment Notice☐ Casing Repair☐ New Construction☒ Recomplete☐ Other☐ Change Plans☐ Plug and Abandon☐ Temporarily Abandon☐ Convert to Injection☐ Plug Back☐ Water Disposal

13. Describe Proposed or Completed Operation: Clearly state all pertinent details, including estimated starting date of any proposed work and approximate duration thereof.

If the proposal is to deepen directionally or recomplete horizontally, give subsurface locations and measured and true vertical depths of all pertinent markers and zones. Attach the bond under which the work will be performed or provide the Bond No. on file with BLM/BIA. Required subsequent reports must be filed within 30 days following completion of the involved operations. If the operation results in a multiple completion or recompletion in a new interval, a Form 3160-4 must be filed once Testing has been completed. Final Abandonment Notices must be filed only after all requirements, including reclamation, have been completed and the operator has determined that the site is ready for final inspection.)

**Hilcorp Energy Company plans to recomplete the subject well in the Mesaverde formation and downhole commingle with the existing Gallup and Dakota. Attached is the MV C102, recomplete procedure & wellbore schematic. The DHC application will be submitted and approved prior to commingling. A closed loop system will be utilized. Interim reclamation will be performed after surface disturbing activities.**

NMOCD

JUL 02 2019

HOLD CTM FOR DHC DISTRICT III

SEE ATTACHED FOR  
CONDITIONS OF APPROVALNotify NMOCD 24 hrs  
prior to beginning  
operations

14. I hereby certify that the foregoing is true and correct. Name (Printed/Typed)

**Christine Brock**Title **Operations/Regulatory Technician - Sr.**

Signature

*Christine Brock*

Date

3/17/19

THIS SPACE FOR FEDERAL OR STATE OFFICE USE

ACCEPTED FOR RECORD

Approved by

Title

JUL 1 2019

Date

Conditions of approval, if any, are attached. Approval of this notice does not warrant or certify that the applicant holds legal or equitable title to those rights in the subject lease which would entitle the applicant to conduct operations thereon.

Office

**FARMINGTON FIELD OFFICE**BY: *[Signature]*

Title 18 U.S.C. Section 1001 and Title 43 U.S.C. Section 1212, make it a crime for any person knowingly and willfully to make to any department or agency of the United States any false, fictitious or fraudulent statements or representations as to any matter within its jurisdiction.

(Instruction on page 2)

NMOCD

5

**District I**1625 N. French Dr., Hobbs, NM 88240  
Phone:(575) 393-6161 Fax:(575) 393-0720**District II**811 S. First St., Artesia, NM 88210  
Phone:(575) 748-1283 Fax:(575) 748-9720**District III**1000 Rio Brazos Rd., Aztec, NM 87410  
Phone:(505) 334-6178 Fax:(505) 334-6170**District IV**1220 S. St Francis Dr., Santa Fe, NM 87505  
Phone:(505) 476-3470 Fax:(505) 476-3462

**State of New Mexico**  
**Energy, Minerals and Natural**  
**Resources**  
**Oil Conservation Division**  
**1220 S. St Francis Dr.**  
**Santa Fe, NM 87505**

Form C-102  
August 1, 2011

Permit 267592

**WELL LOCATION AND ACREAGE DEDICATION PLAT**

1. API Number 30-045-24106	2. Pool Code 72319	3. Pool Name BLANCO-MESAVERDE (PRORATED GAS)
4. Property Code 318622	5. Property Name MCCLANAHAN	6. Well No. 020E
7. OGRID No. 372171	8. Operator Name HILCORP ENERGY COMPANY	9. Elevation 5777

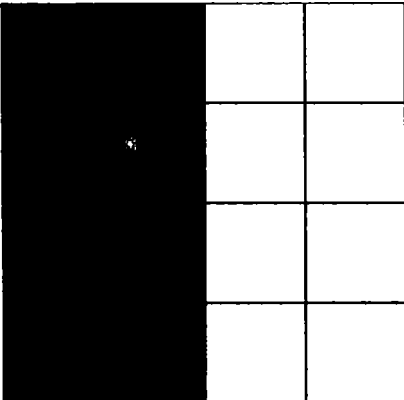
**10. Surface Location**

UL - Lot F	Section 13	Township 28N	Range 10W	Lot Idn	Feet From 1840	N/S Line N	Feet From 1660	E/W Line W	County SAN JUAN
---------------	---------------	-----------------	--------------	---------	-------------------	---------------	-------------------	---------------	--------------------

**11. Bottom Hole Location If Different From Surface**

UL - Lot	Section	Township	Range	Lot Idn	Feet From	N/S Line	Feet From	E/W Line	County
12. Dedicated Acres 320.00 W/2	13. Joint or Infill		14. Consolidation Code		15. Order No.				

**NO ALLOWABLE WILL BE ASSIGNED TO THIS COMPLETION UNTIL ALL INTERESTS HAVE BEEN CONSOLIDATED OR A NON-STANDARD UNIT HAS BEEN APPROVED BY THE DIVISION**

	<b>OPERATOR CERTIFICATION</b> <i>I hereby certify that the information contained herein is true and complete to the best of my knowledge and belief, and that this organization either owns a working interest or unleased mineral interest in the land including the proposed bottom hole location(s) or has a right to drill this well at this location pursuant to a contract with an owner of such a mineral or working interest, or to a voluntary pooling agreement or a compulsory pooling order heretofore entered by the division.</i> E-Signed By: <i>Christine Brock</i> Title: Operation/Regulatory Tech SR. Date: 5/17/2019	
	<b>SURVEYOR CERTIFICATION</b> <i>I hereby certify that the well location shown on this plat was plotted from field notes of actual surveys made by me or under my supervision, and that the same is true and correct to the best of my belief.</i>  Surveyed By: Fred B. Kerr Date of Survey: 10/31/1979 Certificate Number: 3950	



**HILCORP ENERGY COMPANY**  
**McClanahan 20E**  
**MESA VERDE RECOMPLETION NOI**

**API#: 30-045-24106**

<b>JOB PROCEDURES</b>
-----------------------

1. MIRU Service rig and associated equipment, test BOP. Check Bradenhead pressures daily and record throughout the recomplete project. Notify NMOCD and BLM if any anomalous pressures changes occur on the Bradenhead.
2. TOOH w/ 2 3/8" tubing set at 6474'.
3. Set initial CIBP at 5450' or deeper (no higher than 50' above existing perforations)
4. Perform MIT from initial CBP, providing 24 hr notice to BLM and NMOCD. Once completed, review and submit the MIT charted test results to both the NMOCD and BLM. If the MIT fails, discuss and gain approval with both the NMOCD and BLM with a plan of action to remediate the wellbore. Perform a 2nd MIT once remediated.
5. Run CBL and submit it to NMOCD and BLM.
  - a. If CBL confirms calculated cement coverage, then a remediation plan will be submitted to agencies for approval in order to provide adequate cement coverage.
6. Optionally set bridge plug below intended recomplete interval.
7. ND BOP, NU frac stack. Pressure test the production casing or frac string and frac stack to maximum frac pressure. The pressure test will not exceed 85% of the internal yield pressure rating of the primary treatment string.
8. Perforate and frac the Mesa Verde within 3585'-4760'.
9. Optionally set a kill plug above recomplete interval for casing fracs.
10. ND the frac stack, NU the BOP and test.
11. MU and TIH with a mill. Tag and drill out the top isolation plug and Mesa Verde frac plugs if applicable.
12. Clean out the wellbore to the top of the Dakota isolation plug.
13. Once water and sand rates are acceptable, drill out the Dakota isolation plug and cleanout to PBTD of 6563'. TOOH.
14. TIH and land production tubing. Get a trimmed/landed Dakota/Gallup/MV flow rate.

# Wellbore Schematic:

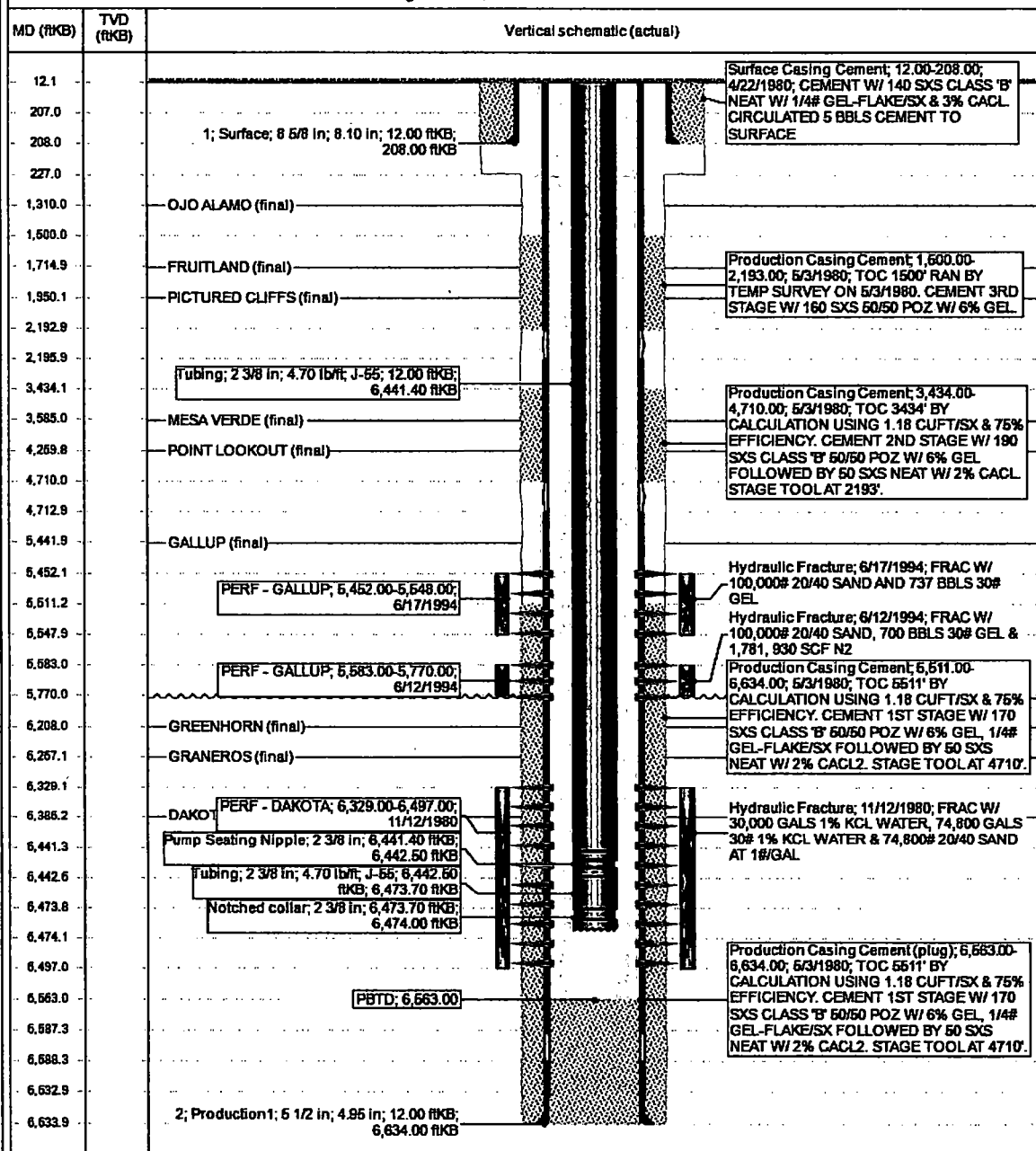


## Current Schematic

Well Name: MCCLANAHAN #20E

API / UWI 3004524106	Surface Legal Location 013-028N-010W-F	Field Name BLANCO MESAVERDE (PRORATED GAS)	Route 0806	State/Province NEW MEXICO	Well Configuration Type
Ground Elevation (ft) 6,777.00	Original KBRT Elevation (ft) 5,789.00	KS-Gravel Distance (ft) 12.00	KS-Casing Flange Distance (ft)	KS-Tubing Hanger Distance (ft)	

Original Hole, 5/10/2019 3:10:34 PM



UNITED STATES DEPARTMENT OF THE INTERIOR  
BUREAU OF LAND MANAGEMENT  
FARMINGTON DISTRICT OFFICE  
6251 COLLEGE BLVD.  
FARMINGTON, NEW MEXICO 87402

Attachment to notice of Intent to Recomplete & Commingle

Well: McClanahan 20E 30-045-24106

**CONDITIONS OF APPROVAL**

1. Contact BLM Inspection and Enforcement @ (505) 564 – 7750, 24 hours prior to conducting MIT work so an inspector can be present to witness the MIT.

Contact John Hoffman, Petroleum Engineer @ (505) 564 – 7742 to discuss any failed MIT results and/or your remedial action and isolation plans.

**Submit the electronic copy of the MIT Test Chart and CBL for verification to the following addresses: [jhoffman@BLM.gov](mailto:jhoffman@BLM.gov) and [Brandon.Powell@state.nm.us](mailto:Brandon.Powell@state.nm.us).**

2. The following modifications to your recompletion program are to be made:

- a) Upon rigging up, record Bradenhead pressure and monitor same during recompletion operations. Notify BLM and NMOCD if anomalous pressure changes occur. Provide monitoring results in the subsequent Report of Operations.
- b) Casing pressure test for fracture stimulation operations cannot exceed the internal yield strength of the casing including a 20% safety factor unless a waiver is granted. Stimulation operations cannot exceed this test pressure.
- c) CIBP for base of fracture stimulation to be set less 50' above top existing perforation.

3. File well test and recompletion results within 30 days of completing recompletion operations.