

UNITED STATES  
DEPARTMENT OF THE INTERIOR  
BUREAU OF LAND MANAGEMENT

RECEIVED

FORM APPROVED  
OMB No. 1004-0137  
Expires: July 31, 2010

5. Lease Serial No. **Farmington Field Office**  
**NMSF078198**  
6. If Indian, Allottee or Tribe Name

**SUNDRY NOTICES AND REPORTS ON WELLS**  
**Do not use this form for proposals to drill or to re-enter an**  
**abandoned well. Use Form 3160-3 (APD) for such proposals.**

**SUBMIT IN TRIPLICATE - Other instructions on page 2.**

1. Type of Well

☐ Oil Well ☒ Gas Well ☐ Other

2. Name of Operator

**Hilcorp Energy Company**

3a. Address

**382 Road 3100, Aztec, NM 87410**

3b. Phone No. (include area code)

**505-599-3400**

7. If Unit of CA/Agreement, Name and/or No.

8. Well Name and No.

**NYE 10E**

9. API Well No.

**30-045-24872**

4. Location of Well (Footage, Sec., T., R., M., or Survey Description)

**Surface Unit G (SW/NE) 1540' FNL & 1530' FEL, Sec. 12, T30N, R11W**

11. Country or Parish, State

**San Juan, New Mexico**

**12. CHECK THE APPROPRIATE BOX(ES) TO INDICATE NATURE OF NOTICE, REPORT OR OTHER DATA**

**TYPE OF SUBMISSION**

**TYPE OF ACTION**

☒ Notice of Intent

☐ Subsequent Report

☐ Final Abandonment Notice

☐ Acidize

☐ Alter Casing

☐ Casing Repair

☐ Change Plans

☐ Convert to Injection

☐ Deepen

☐ Fracture Treat

☐ New Construction

☐ Plug and Abandon

☐ Plug Back

☐ Production (Start/Resume)

☐ Reclamation

☒ Recomplete

☐ Temporarily Abandon

☐ Water Disposal

☐ Water Shut-Off

☐ Well Integrity

☐ Other

13. Describe Proposed or Completed Operation: Clearly state all pertinent details, including estimated starting date of any proposed work and approximate duration thereof. If the proposal is to deepen directionally or recompleate horizontally, give subsurface locations and measured and true vertical depths of all pertinent markers and zones. Attach the bond under which the work will be performed or provide the Bond No. on file with BLM/BIA. Required subsequent reports must be filed within 30 days following completion of the involved operations. If the operation results in a multiple completion or recompleation in a new interval, a Form 3160-4 must be filed once Testing has been completed. Final Abandonment Notices must be filed only after all requirements, including reclamation, have been completed and the operator has determined that the site is ready for final inspection.)

**Hilcorp Energy Company requests permission to recompleate the subject well in the Mesaverde and downhole commingle with the existing Dakota formation. Attached is the procedure, wellbore diagram, plat, and gas capture plan. A DHC application will be filed and approved prior to commingling. A closed loop system will be used. Interim reclamation will be performed after surface disturbing activities**

Notify NMOCD 2  
prior to begin  
operation

**\*\*Pending Density Approval\*\***

**NMOCD**

**SEE ATTACHED FOR**

**CONDITIONS OF APPROVAL**

**HOLD C104 FOR**

**Density  
Exception**

**DISTRICT III**

14. I hereby certify that the foregoing is true and correct. Name (Printed/Typed)

**Priscilla Shorty**

Title **Operations/Regulatory Technician - Sr.**

Signature

*Priscilla Shorty*

Date **5/20/2019**

**THIS SPACE FOR FEDERAL OR STATE OFFICE USE**

Approved by

Title

Office

Conditions of approval, if any, are attached. Approval of this notice does not warrant or certify that the applicant holds legal or equitable title to those rights in the subject lease which would entitle the applicant to conduct operations thereon.

Title 18 U.S.C. Section 1001 and Title 43 U.S.C. Section 1212, make it a crime for any person knowingly and willfully to make to any department or agency of the United States any false, fictitious or fraudulent statements or representations as to any matter within its jurisdiction.

(Instruction on page 2)

**ACCEPTED FOR RECORD**

**JUN 28 2019**

**FARMINGTON FIELD OFFICE**

BY:

**NMOCD**



**District I**

1625 N. French Dr., Hobbs, NM 88240  
Phone:(575) 393-6161 Fax:(575) 393-0720

**District II**

811 S. First St., Artesia, NM 88210  
Phone:(575) 748-1283 Fax:(575) 748-9720

**District III**

1000 Rio Brazos Rd., Aztec, NM 87410  
Phone:(505) 334-6178 Fax:(505) 334-6170

**District IV**

1220 S. St Francis Dr., Santa Fe, NM 87505  
Phone:(505) 476-3470 Fax:(505) 476-3462

**State of New Mexico**  
**Energy, Minerals and Natural**  
**Resources**  
**Oil Conservation Division**  
**1220 S. St Francis Dr.**  
**Santa Fe, NM 87505**

Form C-102  
August 1, 2011

Permit 267646

**WELL LOCATION AND ACREAGE DEDICATION PLAT**

1. API Number 30-045-24872	2. Pool Code 72319	3. Pool Name BLANCO-MESAVERDE (PRORATED GAS)
4. Property Code 318646	5. Property Name NYE	6. Well No. 010E
7. OGRID No. 372171	8. Operator Name HILCORP ENERGY COMPANY	9. Elevation 6018

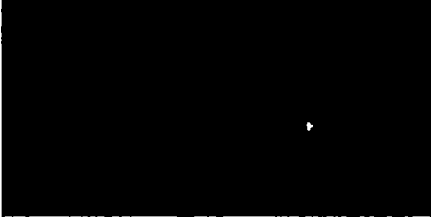
**10. Surface Location**

UL - Lot G	Section 12	Township 30N	Range 11W	Lot Idn 7	Feet From 1540	N/S Line N	Feet From 1530	E/W Line E	County SAN JUAN
---------------	---------------	-----------------	--------------	--------------	-------------------	---------------	-------------------	---------------	--------------------

**11. Bottom Hole Location If Different From Surface**

UL - Lot	Section	Township	Range	Lot Idn	Feet From	N/S Line	Feet From	E/W Line	County
12. Dedicated Acres 322.98	13. Joint or Infill		14. Consolidation Code		15. Order No.				

**NO ALLOWABLE WILL BE ASSIGNED TO THIS COMPLETION UNTIL ALL INTERESTS HAVE BEEN CONSOLIDATED OR A NON-STANDARD UNIT HAS BEEN APPROVED BY THE DIVISION**

	<b>OPERATOR CERTIFICATION</b>	
	<p><i>I hereby certify that the information contained herein is true and complete to the best of my knowledge and belief, and that this organization either owns a working interest or unleased mineral interest in the land including the proposed bottom hole location(s) or has a right to drill this well at this location pursuant to a contract with an owner of such a mineral or working interest, or to a voluntary pooling agreement or a compulsory pooling order heretofore entered by the division.</i></p>	
	<p>E-Signed By: <i>Priscilla Shorty</i> Title: Operations Regulatory Technician - Sr. Date: 5/20/2019</p>	
<b>SURVEYOR CERTIFICATION</b>		
<p><i>I hereby certify that the well location shown on this plat was plotted from field notes of actual surveys made by me or under my supervision, and that the same is true and correct to the best of my belief.</i></p>		
<p>Surveyed By: Fred Kerr Date of Survey: 12/30/1980 Certificate Number: 3950</p>		





HILCORP ENERGY COMPANY  
**NYE 10E**  
MESA VERDE RECOMPLETION SUNDRY

API #: 3004524872

**JOB PROCEDURES**

- |                                     |       |  |
|-------------------------------------|-------|--|
| <input checked="" type="checkbox"/> | NMOCD | <b>Contact</b> OCD and BLM 24 hrs prior to MIRU. Record and document all casing pressures <u>daily</u> , including BH, IC (if present) and PC. Comply with all NMOCD, BLM, and HEC safety and environmental regulations. |
| <input checked="" type="checkbox"/> | BLM   |  |
1. MIRU service rig and associated equipment; NU and test BOP.
  2. TOOH with **2 3/8"** tubing set at **7,165'**.
  3. MU a **4-1/2"** cast iron bridge plug and RIH with work string; set a 4-1/2" CIBP at +/- **6,900'** to isolate the Dakota Formation.
  4. Load hole with fluid and TOOH with the work string. MIRU E-line truck. Run a CBL on the wellbore from the CIBP to surface. Verify cement bond within the Mesa Verde. Review CBL results with NMOCD and BLM.
  5. RU pressure test truck. Perform a Mechanical Integrity Test on wellbore. Chart record the MIT test (Notify NMOCD & BLM +24hr before actual test). Review and submit the MIT test results to the NMOCD and BLM. If the MIT fails, discuss with both the NMOCD and BLM on a plan of action to remediate the wellbore. Perform 2nd MIT once remediated.
  6. (If needed) Based on CBL results, perform a suicide cement squeeze job on the backside of the 4-1/2" casing to provide adequate cement bond above, within, and below the planned recompleat perf interval for this project. Review with NMOCD and BLM before proceeding with this step.
  7. (If needed) Drill out suicide squeeze cement within the wellbore, log the wellbore with a CBL, and review the log with the NMOCD and BLM. If approved, MIT the wellbore with the BLM and NMOCD (notify +24 hr notice before actual test).
  8. MU and RIH with a 4-1/2" CIBP, set +/-50' below the lowest perf interval picked for the Mesa Verde frac interval.
  9. RU wireline and perforate the Mesa Verde. (Top perforation @ **4,114'**, Bottom perforation @ **5,199'**). (If needed, set a flow through frac plug between perf intervals for stage isolation).
  10. Changeout pipe rams on BOP to 2-7/8" and test. TIH with 2-7/8" frac tubing (P-110 6.5# BTS-8) string with a retrievable 4-1/2" packer (10K AS1-X), land the tbg/pkr, pressure test the backside of the packer to verify installation.
  11. N/D BOP, N/U 10K frac stack and test frac stack and frac string together to 8,000 psi (55% of total pipe internal yield strength). RDMO service rig.
  12. MIRU frac service equipment. Frac the **Mesa Verde** in one or two stages. RDMO frac service equipment.
  13. MIRU service rig. ND frac stack, NU BOP and test. TOOH with the 2-7/8" frac tubing string and 4-1/2" packer and LD.
  14. Changeout BOP pipe rams to 2-3/8", test BOP. MU and TIH with a mill with 2-3/8" pipe. Drill out all fill and any plugs set above the Dakota isolation plug.
  15. Clean out to the top of the Dakota isolation plug and, when water and sand rates are acceptable, flow test the Mesa Verde.
  16. Drill out the Dakota isolation plug and cleanout to PBTD of **7,198'**. TOOH.
  17. TIH and land production tubing. RDMO service rig. Get a commingled **Dakota/Mesa Verde** flow rate.

HEC has reviewed all formation tops as per NMOCD website for the wellbore. Mancos formation top has been added based on our log evaluation. No logs exist above 4,541'. The wellbore is North of the Chacra Line.





HILCORP ENERGY COMPANY  
NYE 10E  
MESA VERDE RECOMPLETION SUNDRY

NYE 10E - CURRENT WELLBORE SCHEMATIC



Schematic - Current

Well Name: NYE #10E

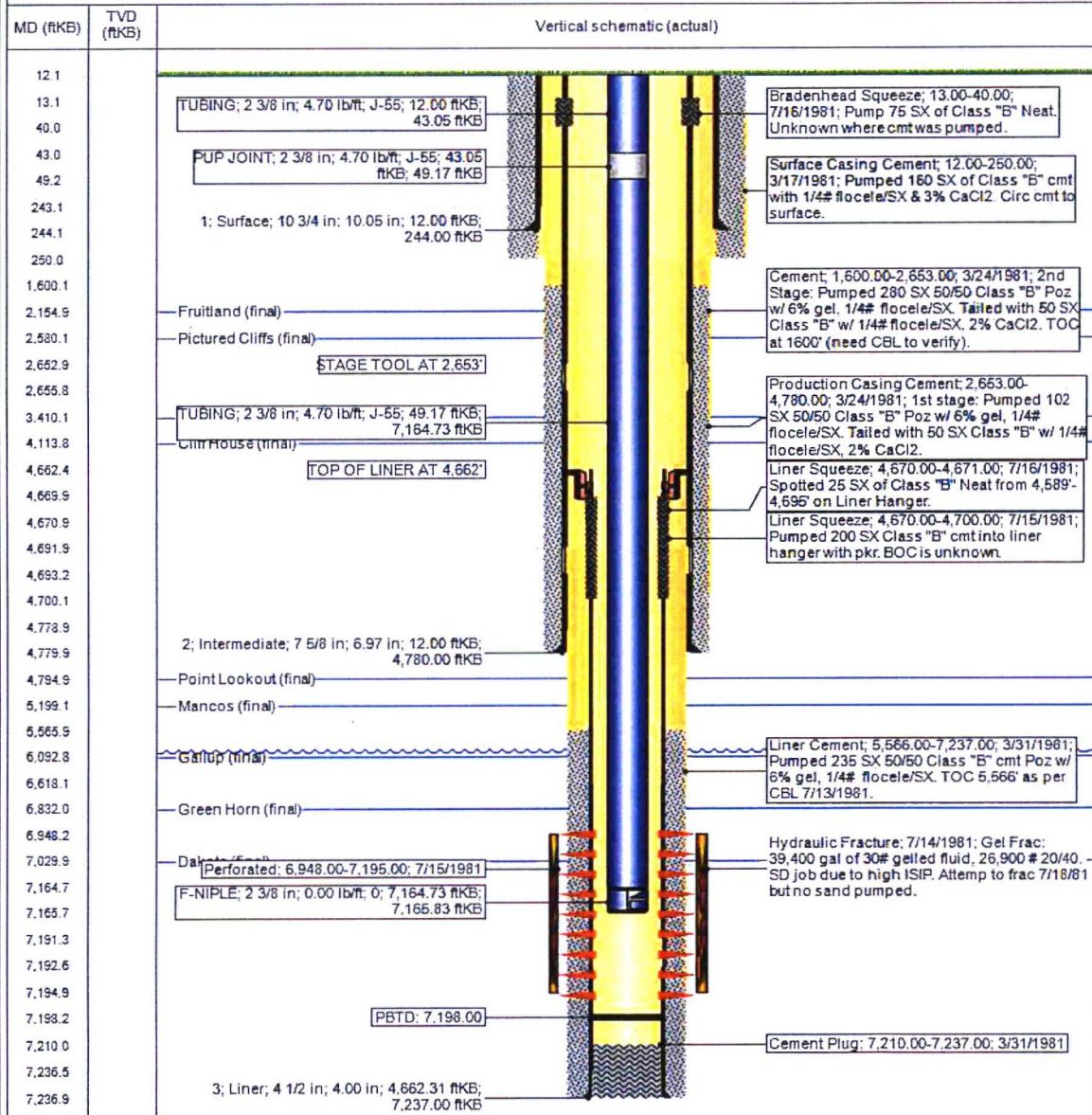
API / UWI 3004524872	Surface Location 012-030N-011W-G	Field Name BASIN DAKOTA (PERFORATED GAS)	License No.	State/Province NEW MEXICO	Well Configuration Type VERTICAL
Original KB RT Elevation (ft) 6,030.00	KB-Ground Distance (ft) 12.00	Original Spud Date 3/16/1981 00:00	Rig Release Date	PSTD (A) (ftKB) Original Hole - 7,198.0	Total Depth (ftKB)

Most Recent Job

Job Category WELL INTERVENTION	Primary Job Type TUBING REPAIR	Secondary Job Type	Actual Start Date 6/26/2007	End Date 6/30/2007
-----------------------------------	-----------------------------------	--------------------	--------------------------------	-----------------------

ID: 7,237.0

VERTICAL, Original Hole, 5/17/2019 11:50:00 AM





UNITED STATES DEPARTMENT OF THE INTERIOR  
BUREAU OF LAND MANAGEMENT  
FARMINGTON DISTRICT OFFICE  
6251 COLLEGE BLVD.  
FARMINGTON, NEW MEXICO 87402

Attachment to notice of Intent to Recomplete & Commingle

Well: NYE 10E 30-045-24872

**CONDITIONS OF APPROVAL**

1. Contact BLM Inspection and Enforcement @ (505) 564 – 7750, 24 hours prior to conducting MIT work so an inspector can be present to witness the MIT.

Contact John Hoffman, Petroleum Engineer @ (505) 564 – 7742 to discuss failed MIT results and/or your remedial action and isolation plans.

**Submit the electronic copy of the MIT Test Chart and CBL for verification to the following addresses: [jhoffman@BLM.gov](mailto:jhoffman@BLM.gov) and [Brandon.Powell@state.nm.us](mailto:Brandon.Powell@state.nm.us).**

2. The following modifications to your recompletion program are to be made:

- a) Upon rigging up, record Bradenhead pressure and monitor same during recompletion operations. Notify BLM and NMOCD if anomalous pressure changes occur. Provide monitoring results in the subsequent Report of Operations.
- b) Casing pressure test for fracture stimulation operations cannot exceed the internal yield strength of the casing including a 20% safety factor unless a waiver is granted. Stimulation operations cannot exceed this test pressure.
- c) CIBP for base of fracture stimulation to be set less 50' above top existing perforation.

3. File well test and recompletion results within 30 days of completing recompletion operations.