

UNITED STATES  
DEPARTMENT OF THE INTERIOR  
BUREAU OF LAND MANAGEMENT

FORM APPROVED  
OMB No. 1004-0137  
Expires: July 31, 2010

**SUNDRY NOTICES AND REPORTS ON WELLS**  
*Do not use this form for proposals to drill or to re-enter an  
abandoned well. Use Form 3160-3 (APD) for such proposals.*

SUBMIT IN TRIPLICATE - Other instructions on page 2.

1. Type of Well

☐ Oil Well ☒ Gas Well ☐ Other

2. Name of Operator

Hilcorp Energy Company

3a. Address

382 Road 3100, Aztec, NM 87410

3b. Phone No. (include area code)

505-599-3400

4. Location of Well (Footage, Sec., T., R., M., or Survey Description)

Surface Unit M (SWSW) 730' FSL & 1190' FWL, Sec. 35, T32N, R12W

7. If Unit of CA/Agreement, Name and/or No.

8. Well Name and No.

Newberry B 1E

9. API Well No.

30-045-24924

10. Field and Pool or Exploratory Area

Basin Dakota

11. Country or Parish, State

San Juan, New Mexico

12. CHECK THE APPROPRIATE BOX(ES) TO INDICATE NATURE OF NOTICE, REPORT OR OTHER DATA

TYPE OF SUBMISSION

TYPE OF ACTION

☒ Notice of Intent

☐ Subsequent Report

☐ Final Abandonment Notice

☐ Acidize

☐ Alter Casing

☐ Casing Repair

☐ Change Plans

☐ Convert to Injection

☐ Deepen

☐ Fracture Treat

☐ New Construction

☐ Plug and Abandon

☐ Plug Back

☐ Production (Start/Resume)

☐ Reclamation

☒ Recomplete

☐ Temporarily Abandon

☐ Water Disposal

☐ Water Shut-Off

☐ Well Integrity

☐ Other

13. Describe Proposed or Completed Operation: Clearly state all pertinent details, including estimated starting date of any proposed work and approximate duration thereof. If the proposal is to deepen directionally or recompletable horizontally, give subsurface locations and measured and true vertical depths of all pertinent markers and zones. Attach the bond under which the work will be performed or provide the Bond No. on file with BLM/BIA. Required subsequent reports must be filed within 30 days following completion of the involved operations. If the operation results in a multiple completion or recompletable in a new interval, a Form 3160-4 must be filed once Testing has been completed. Final Abandonment Notices must be filed only after all requirements, including reclamation, have been completed and the operator has determined that the site is ready for final inspection.)

Hilcorp Energy Company requests permission to recompletable the subject well in the Mesaverde and downhole commingle with the existing Dakota. Please see the attached procedure, wellbore diagram, plat and GCP. A closed loop system will be used. Interim reclamation will be performed after surface disturbing activities.

NMOCD

DISTRICT III

SEE ATTACHED FOR  
CONDITIONS OF APPROVAL

Notify NMOCD 24 hrs  
prior to beginning  
operations

14. I hereby certify that the foregoing is true and correct. Name (Printed/Typed)

Amanda Walker

Title Operations/Regulatory Technician - Sr.

Signature

Date 5/7/2019

THIS SPACE FOR FEDERAL OR STATE OFFICE USE

Approved by

ACCEPTED FOR RECORD

Title

Date

Conditions of approval, if any, are attached. Approval of this notice does not warrant or certify that the applicant holds legal or equitable title to those rights in the subject lease which would entitle the applicant to conduct operations thereon.

Office

JUN 28 2019

FARMINGTON FIELD OFFICE

Title 18 U.S.C. Section 1001 and Title 43 U.S.C. Section 1212, make it a crime for any person knowingly and willfully to make any department or agency of the United States any false, fictitious or fraudulent statements or representations as to any matter within its jurisdiction.

(Instruction on page 2)

NMOCD

5/6/2019

OCD Permitting

Form C-102  
August 1, 2011

Permit 267000

**District I**1625 N. French Dr., Hobbs, NM 88240  
Phone:(575) 393-6161 Fax:(575) 393-0720**District II**811 S. First St., Artesia, NM 88210  
Phone:(575) 748-1283 Fax:(575) 748-9720**District III**1000 Rio Brazos Rd., Aztec, NM 87410  
Phone:(505) 334-6178 Fax:(505) 334-6170**District IV**1220 S. St Francis Dr., Santa Fe, NM 87505  
Phone:(505) 476-3470 Fax:(505) 476-3462

**State of New Mexico**  
**Energy, Minerals and Natural**  
**Resources**  
**Oil Conservation Division**  
**1220 S. St Francis Dr.**  
**Santa Fe, NM 87505**

**WELL LOCATION AND ACREAGE DEDICATION PLAT**

1. API Number 30-045-24924	2. Pool Code 72319	3. Pool Name BLANCO-MESAVERDE (PRORATED GAS)
4. Property Code 319057	5. Property Name NEWBERRY B	6. Well No. 001E
7. OGRID No. 372171	8. Operator Name HILCORP ENERGY COMPANY	9. Elevation 6415


**10. Surface Location**

UL - Lot M	Section 35	Township 32N	Range 12W	Lot Idn	Feet From 730	N/S Line S	Feet From 1190	E/W Line W	County SAN JUAN
---------------	---------------	-----------------	--------------	---------	------------------	---------------	-------------------	---------------	--------------------

**11. Bottom Hole Location If Different From Surface**

UL - Lot	Section	Township	Range	Lot Idn	Feet From	N/S Line	Feet From	E/W Line	County
12. Dedicated Acres 320.00	13. Joint or Infill			14. Consolidation Code			15. Order No.		

**NO ALLOWABLE WILL BE ASSIGNED TO THIS COMPLETION UNTIL ALL INTERESTS HAVE BEEN CONSOLIDATED OR A NON-STANDARD UNIT HAS BEEN APPROVED BY THE DIVISION**

**OPERATOR CERTIFICATION**

*I hereby certify that the information contained herein is true and complete to the best of my knowledge and belief, and that this organization either owns a working interest or unleased mineral interest in the land including the proposed bottom hole location(s) or has a right to drill this well at this location pursuant to a contract with an owner of such a mineral or working interest, or to a voluntary pooling agreement or a compulsory pooling order heretofore entered by the division.*

E-Signed By: *Amanda Walker*  
 Title: Operations / Regulatory Tech. Sr.  
 Date: 5/6/2019

**SURVEYOR CERTIFICATION**

*I hereby certify that the well location shown on this plat was plotted from field notes of actual surveys made by me or under my supervision, and that the same is true and correct to the best of my belief.*

Surveyed By: Fred B. Kerr Jr.  
 Date of Survey: 12/3/1980  
 Certificate Number: 3950



HILCORP ENERGY COMPANY  
NEWBERRY B 1E  
MESA VERDE RECOMPLETION SUNDRY

API #:

3004524924

JOB PROCEDURES

- ☒ NMOCD **Contact** OCD and BLM (where applicable) 24 hrs prior to MIRU. Record and document all casing pressures daily, including
- ☒ BLM **BH, IC** (if present) and PC. Comply with all NMOCD, BLM (where applicable), and HEC safety and environmental regulations.

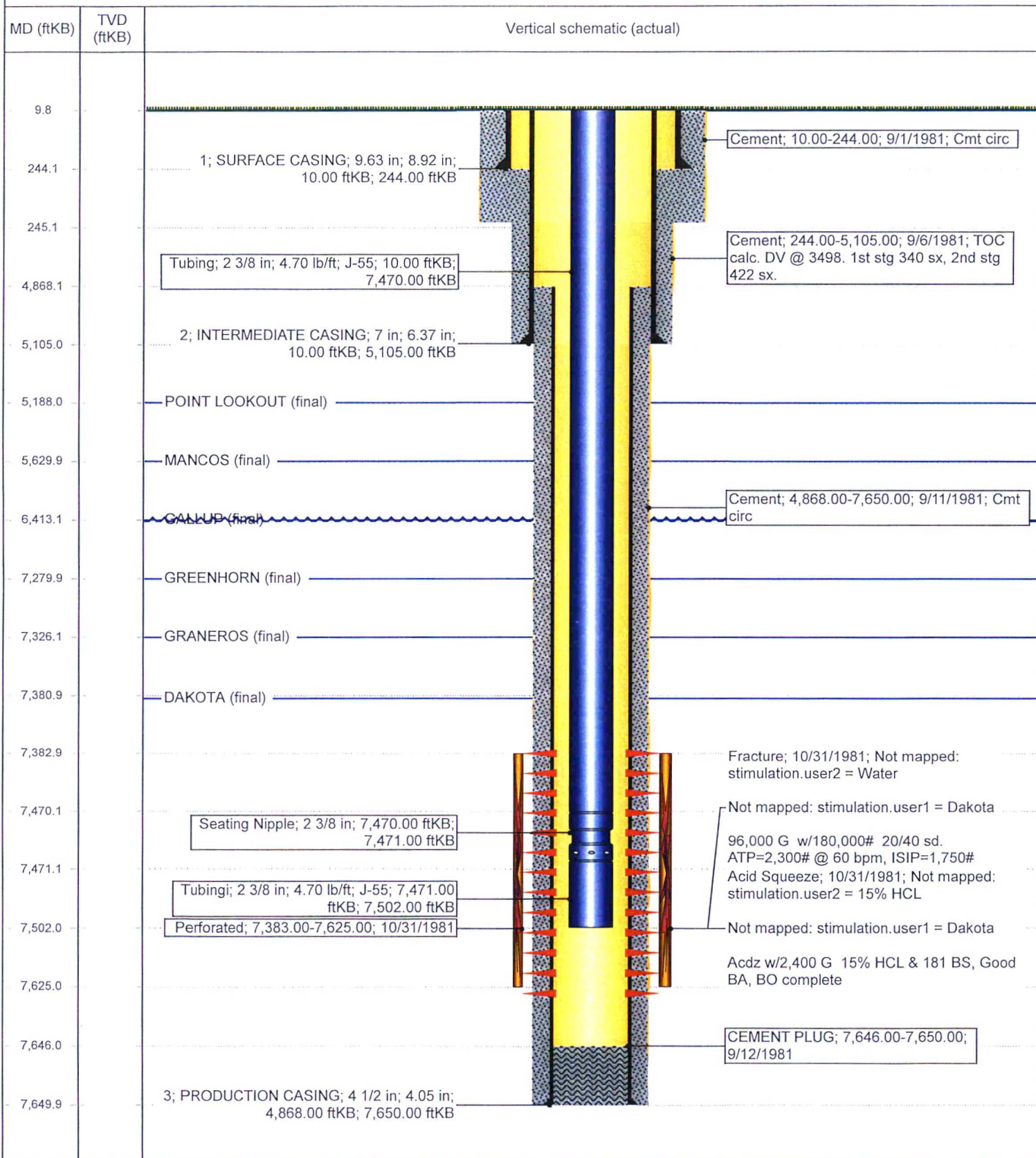
1. MIRU workover rig and associated equipment; NU and pressure test BOP.
2. TOOH with **2 3/8"** tubing set at **7,502'**.
3. Set a **4-1/2"** cast iron bridge plug at +/- **7,333'** to isolate the **Dakota**
4. Load hole with fluid, PT the csg to 600 psi and run a CBL on the 4-1/2" casing. Verify cement bond within the **Mesa Verde** and confirm TOC. Review CBL results with the regulatory agencies and perform cmt remediation, as required.
5. Schedule MIT 24 hrs in advance. Perform a witnessed MIT test on the csg with the appropriate regulatory agencies to 600 psi
6. Set a **4-1/2"** cast iron bridge plug at +/- **5,730'** to provide a **base for the frac**.
7. ND BOPs, NU frac stack. PT frac stack to 5,000psi. Top off all csg strings and PT PC/IC to 3,500 psi (80% of 7" 23# K55 IC burst psi)
8. Perforate (Top perforation @ 4,688', Bottom perforation @ 5,630') and frac the **Mesa Verde** down casing in 2-3 stages
9. Set composite plugs between stages and a top plug above the perforations after the final stage
10. MIRU workover rig. Nipple down frac stack, nipple up BOPs and pressure test.
11. TIH w/ mill and mill out top plug and CBPs to the top of the **base of frac plug** at **5,730'**. Take **Mesa Verde** gas samples and send for analysis
12. Drill out **base of frac plug** and cleanout to DK isolation plug at **7,333'**. POOH.
13. Drill out **Dakota** isolation plug and cleanout to PBTD of **7,646'**. POOH.
14. TIH and land production tubing. ND BOPs and NU tree. Pump off expendable check.
15. RDMO. Get a commingled **Dakota/Mesa Verde** flow rate.



**Well Name: NEWBERRY B #1E**

API / UWI 3004524924	Surface Legal Location 035-032N-012W-M	Field Name DK	Route 0108	State/Province NEW MEXICO	Well Configuration Type Vertical
Ground Elevation (ft) 6,415.00	Original KB/RT Elevation (ft) 6,425.00	KB-Ground Distance (ft) 10.00	KB-Casing Flange Distance (ft) 10.00	KB-Tubing Hanger Distance (ft) 10.00	

Vertical, Original Hole, 5/9/2019 9:41:15 AM



UNITED STATES DEPARTMENT OF THE INTERIOR  
BUREAU OF LAND MANAGEMENT  
FARMINGTON DISTRICT OFFICE  
6251 COLLEGE BLVD.  
FARMINGTON, NEW MEXICO 87402

Attachment to notice of Intent to Recomplete & Commingle

Well: Newberry B1 E 30-045-24924

**CONDITIONS OF APPROVAL**

1. Contact BLM Inspection and Enforcement @ (505) 564 – 7750, 24 hours prior to conducting MIT work so an inspector can be present to witness the MIT.

Contact John Hoffman, Petroleum Engineer @ (505) 564 – 7742 to discuss failed MIT results and/or your remedial action and isolation plans.

**Submit the electronic copy of the MIT Test Chart and CBL for verification to the following addresses: [jhoffman@BLM.gov](mailto:jhoffman@BLM.gov) and [Brandon.Powell@state.nm.us](mailto:Brandon.Powell@state.nm.us).**

2. The following modifications to your recompletion program are to be made:

- a) Upon rigging up, record Bradenhead pressure and monitor same during recompletion operations. Notify BLM and NMOCD if anomalous pressure changes occur. Provide monitoring results in the subsequent Report of Operations.
- b) Casing pressure test for fracture stimulation operations cannot exceed the internal yield strength of the casing including a 20% safety factor unless a waiver is granted. Stimulation operations cannot exceed this test pressure.
- c) CIBP for base of fracture stimulation to be set less 50' above top existing perforation.

3. File well test and recompletion results within 30 days of completing recompletion operations.