

District I (575) 393-6161
1625 N. French Dr., Hobbs, NM 88240
District II (575) 748-1283
811 S. First St., Artesia, NM 88210
District III (505) 334-6178
1000 Rio Brazos Road, Aztec, NM 87410
District IV (505) 827-8198
1220 S. St. Francis Dr., Santa Fe, NM 87505

State of New Mexico
Energy Minerals and Natural Resources

Oil Conservation Division
1220 South St. Francis Dr.
Santa Fe, NM 87505

Form C-106
Revised August 1, 2011

3-41 ACT Permit No.

NOTICE OF INTENTION TO UTILIZE AUTOMATIC CUSTODY TRANSFER EQUIPMENT

Operator Enduring Resources IV, LLC

Address 200 Energy Court, Farmington NM 87401 County San Juan

Lease(s) to be served by this ACT Unit: NMNM-135216A W LYBROOK UNIT

Pool(s) to be served by this ACT Unit Basin Mancos (97232)

Location of ACT System: Unit J Section 23 Township 23N Range 9W

Order No. authorizing commingling between leases if more than one lease is to be served by this system.

R-14051 Date 12/1/15

Order No. authorizing commingling between pools if more than one pool is to be served by this system

N/A Date N/A

Authorized transporter of oil from this system Enduring Resources IV, LLC

Transporter's address 200 Energy Court, Farmington NM 87401

Maximum expected daily through-put for this system: 6,000 BBL/Day

If system fails to transfer oil due to malfunction or otherwise, waste by overflow will be averted by:

CHECK ONE: A. ☐ Automatic shut-down facilities B. ☒ Providing adequate available capacity to receive production
as required by 19.15.18.15.C(8) NMAC during maximum unattended time of lease operation
19.15.18.15.C(9) NMAC

If "A" above is checked, will flowing wells be shut-in at the header manifold or at the wellhead?

NA Maximum well-head shut-in pressure N/A

If "B" above is checked, how much storage capacity is available above the normal high working level of the

surge tank 225 BBLS.

What is the normal maximum unattended time of lease operation? Sixteen (16) Hours.

What device will be used for measuring oil in this ACT unit?

CHECK ONE: ☐ Positive displacement meter ☐ Weir-type measuring vessel
☐ Positive volume metering chamber ☒ Other: Elite Coriolis Meter

Remarks: This LACT will be selling to pipeline.

OPERATOR:

I hereby certify above information is true and complete to best of my knowledge and subject ACT system will be installed and operated in accordance with Rule 19.15.18.15 NMAC. Approval of this Form C-106 does not eliminate necessity of an approved C-104 prior to running any oil or gas from this system.

Signature Lacey Granillo

Printed Name & Title Lacey Granillo- Permit Specialist

E-mail Address lgranillo@enduringresources.com

Date 8/16/19 Telephone (505) 636-9743

OIL CONSERVATION DIVISION

Approved by: [Signature]

Title: SUPERVISOR DISTRICT #3

Date: 8/21/19

INSTRUCTIONS: Submit one copy of Form C-106 with following attachments to appropriate district office.

- 1) Lease plat showing all wells which will be produced in ACT system.
- 2) Schematic diagram of battery and ACT equipment showing all major components and means employed to prove accuracy of measuring device.
- 3) Letter from transporter agreeing to utilization of ACT system as shown on schematic diagram.

A

**NOTICE OF INTENTION TO UTILIZE AUTOMATIC CUSTODY TRANSFER EQUIPMENT
W LYBROOK UNIT 768H PAD & W LYBROOK UNIT 720H PAD PIPELINE LACT UNIT**

WELLS TO BE SERVED BY PIPELINE LACT UNIT:

- W LYBROOK UNIT 768H/ API # 30-045-35891/ UNIT H Sec. 23, T23N, R9W, NMPM
- W LYBROOK UNIT 769H/ API # 30-045-35892/ UNIT H Sec. 23, T23N, R9W, NMPM
- W LYBROOK UNIT 770H / API # 30-045-35893 / UNIT H Sec. 23, T23N, R9W, NMPM
- W LYBROOK UNIT 771H/ API # 30-045-35894/ UNIT H Sec. 23, T23N, R9W, NMPM
- W LYBROOK UNIT 720H/ API # 30-045-35818/ UNIT J Sec. 23, T23N, R9W, NMPM
- W LYBROOK UNIT 722H/ API # 30-045-35779/ UNIT J Sec. 23, T23N, R9W, NMPM
- W LYBROOK UNIT 724H/ API # 30-045-35811/ UNIT J Sec. 23, T23N, R9W, NMPM
- W LYBROOK UNIT 756H/ API # 30-045-35819/ UNIT J Sec. 23, T23N, R9W, NMPM
- W LYBROOK UNIT 757H/ API # 30-045-35807/ UNIT J Sec. 23, T23N, R9W, NMPM
- W LYBROOK UNIT 758H/ API # 30-045-35810/ UNIT J Sec. 23, T23N, R9W, NMPM

19.15.18.15 AUTOMATIC CUSTODY TRANSFER EQUIPMENT:

A. Oil shall be received and measured in facilities of an approved design. The facilities shall permit the testing of each well at reasonable intervals and may be comprised of manually gauged, closed stock tanks for which the operator of the ACT system has prepared proper strapping tables, or of ACT equipment. The division shall permit ACT equipment's use only after the operator complies with the following. The operator shall file with the division form C-106 and receive approval for use of the ACT equipment prior to transferring oil through the ACT system. The carrier shall not accept delivery of oil through the ACT system until the division has approved form C-106.

- *Summary is attached to Form C-106 Notice of Intent to Utilize Automatic Custody Transfer Equipment*

B. The operator of the ACT system shall submit form C-106 to the appropriate division district office, which is accompanied by the following:

- (1) plat of the lease showing all wells that the any well operator will produce into the ACT system;

- *Attached as part of Form C-106 Notice of Intent*

(2) schematic diagram of the ACT equipment, showing on the diagram all major components such as surge tanks and their capacity, extra storage tanks and their capacity, transfer pumps, monitors, reroute valves, treaters, samplers, strainers, air and gas eliminators, back pressure valves and metering devices (indicating type and capacity, *i.e.* whether automatic measuring tank, positive volume metering chamber, weir-type measuring vessel or positive displacement meter); the schematic diagram shall also show means employed to prove the measuring device's accuracy; and

- *Attached as part of Form C-106 Notice of Intent*

- (3) letter from transporter agreeing to utilization of ACT system as shown on schematic diagram.

- *Attached as part of Form C-106 Notice of Intent*

C. The division shall not approve form C-106 unless the operator of the ACT system will install and operate the ACT system in compliance with the following requirements.

(1) Provision is made for accurate determination and recording of uncorrected volume and applicable temperature, or of temperature corrected volume. The system's overall accuracy shall equal or surpass manual methods.

- *The LACT system is more accurate when compared to a manual tank sale. It is proved per BLM Onshore Order #4 Measurement of Oil and API MPMS Chapter 4 Proving Systems; with a volumetric prover that meets the requirements set forth in Onshore Order #4. The LACT also has a temperature RTD which will be calibrated semi-annually, unless more frequent verification is requested by the division.*

(2) Provision is made for representative sampling of the oil transferred for determination of API gravity and BS&W content.

- *The LACT is equipped with a flow proportional sampler (sample probe and actuated valve). The sampled fluid is stored in a sealed cylinder that is used for API gravity and S&W determination.*

(3) Provision is made if required by either the oil's producer or the transporter to give adequate assurance that the ACT system runs only merchantable oil.

- *The LACT is equipped with a water cut analyzer that communicates with the flow computer. When the S&W set point is reached the divert valve will engage sending non-merchantable oil to a divert tank. The set point can be adjusted in the flow computer but only if agreed upon by both shipper and producer.*

(4) Provision is made for set-stop counters to stop the flow of oil through the ACT system at or prior to the time the allowable has been run. Counters shall provide non-reset totalizers that are visible for inspection at all times.

- *The Coriolis meter has non-resettable totalizer which is always visibly available on the LCD display.*

(5) Necessary controls and equipment are enclosed and sealed, or otherwise arranged to provide assurance against, or evidence of, accidental or purposeful mismeasurement resulting from tampering.

- *Required ports are sealed and tracked in the seal log.*

(6) The ACT system's components are properly sized to ensure operation within the range of their established ratings. All system components that require periodic calibration or inspection for proof of continued accuracy are readily accessible; the frequency and methods of the calibration or inspection shall be as set forth in Paragraph (12) of Subsection C of 19.15.18.15 NMAC.

- *The Coriolis is proved per BLM Onshore Order #4 Measurement of Oil and API MPMS Chapter 4 Proving Systems; with a volumetric prover that meets the requirements set forth in Onshore Order #4. The prover is NIST traceable and water drawn on a bi-annual basis. Proving will be consistent with Onshore Order #4, unless a variance is granted by the Division. NMOCD representatives are sent the schedule to witness if desired. The temperature transmitter is verified on a semi-annual basis, unless more frequent verification is requested by the Division. The water cut analyzer is calibrated as needed.*

(7) The control and recording system includes adequate fail-safe features that provide assurance against mismeasurement in the event of power failure, or the failure of the ACT system's component parts.

- *In the event of power failure, the divert valve mechanically goes to "failed state" and no longer sales oil but only sends it to the divert tank.*
- *All of the historized volume data is stored in flow computer memory with battery backup and is also transmitted by SCADA, multiple times a day, to an office server. So even during a power failure no oil volume is lost.*
- *In the event of a malfunction, the LACT unit is programmed to shut off and divert valve is forced to close and no longer sales oil but only sends it to the divert tank. The malfunction is also logged by the flow computer.*

(8) The ACT system and allied facilities include fail-safe equipment as may be necessary, including high level switches in the surge tank or overflow storage tank that, in the event of power failure or malfunction of the ACT or other equipment, will shut down artificially lifted wells connected to the ACT system and will shut in flowing wells at the well-head or at the header manifold, in which latter case the operator of the ACT system shall pressure test all flowlines to at least 1½ times the maximum well-head shut-in pressure prior to the ACT system's initial use and every two years thereafter.

- *Hi level switches are in place and will shut the well in at the inlet to the production unit in the event of a full tank. Flow lines were tested to 1 ½ times shut in pressure at initial construction. Testing will commence every two years to ensure piping integrity.*

(9) As an alternative to the requirements of Paragraph (8) of Subsection C of 19.15.18.15 NMAC the producer shall provide and at all times maintain a minimum of available storage capacity above the normal high working level of the surge tank to receive and hold the amount of oil that may be produced during maximum unattended time of lease operation.

- *N/A*

(10) In all ACT systems employing automatic measuring tanks, weir-type measuring vessels, positive volume metering chambers or any other volume measuring container, the container and allied components shall be properly calibrated prior to initial use and shall be operated, maintained and inspected as necessary to ensure against incrustation, changes in clingage factors, valve leakage or other leakage and improper action of floats, level detectors, etc.

- *N/A – Coriolis Meter*

(11) In ACT systems employing positive displacement meters, the meter and allied components shall be properly calibrated prior to initial use and shall be operated, maintained and inspected as necessary to ensure against oil mismeasurement.

- *The Coriolis is proved per BLM Onshore Order #4 Measurement of Oil and API MPMS Chapter 4 Proving Systems; with a volumetric prover that meets the requirements set forth in Onshore Order #4. The prover is NIST traceable and water drawn on a bi-annual basis. Monthly proving will continue per the rule, unless a variance is granted by the Division. NMOCD representatives are sent the schedule to witness if desired. The temperature transmitter is verified on a semi-annual basis, unless more frequent verification is requested by the Division.*

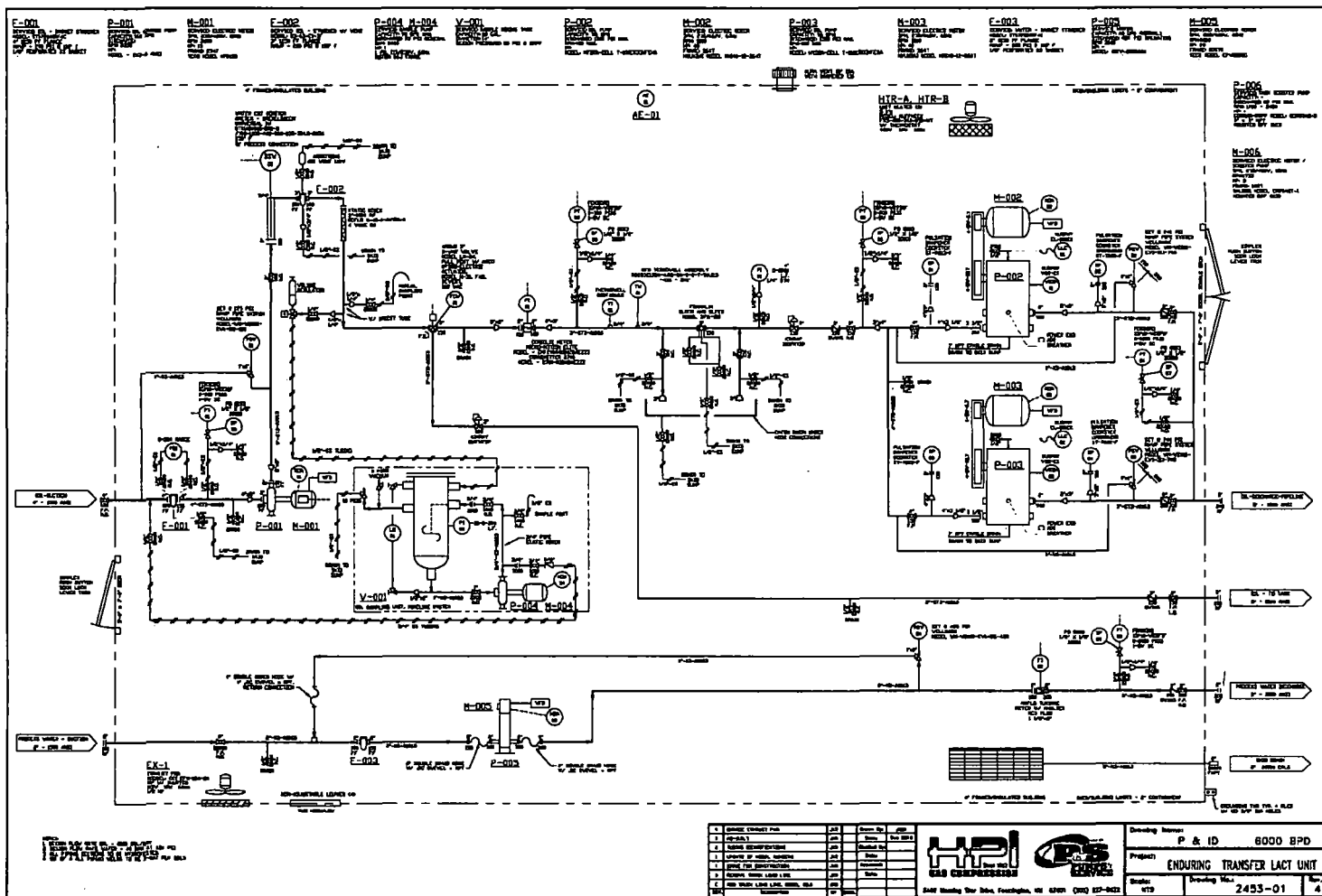
(12) The operator of the ACT system shall check the measuring and recording devices of ACT systems for accuracy at least once each month unless it has obtained an exception to such determination from the division. Where applicable, the operator of the ACT system shall use API standard 1101, Measurement of Petroleum Hydrocarbons by Positive Displacement Meter. Meters may be proved against master meters, portable prover tanks or prover tanks permanently installed on the lease. If the operator of the ACT system uses permanently installed prover tanks, the distance between the opening and closing levels and the provision for determining the opening and closing readings shall be sufficient to detect variations of 5/100 of one percent. The operator of the ACT system shall file reports of determination on the division form entitled "meter test report" or on another acceptable form in duplicate with the appropriate division district office.

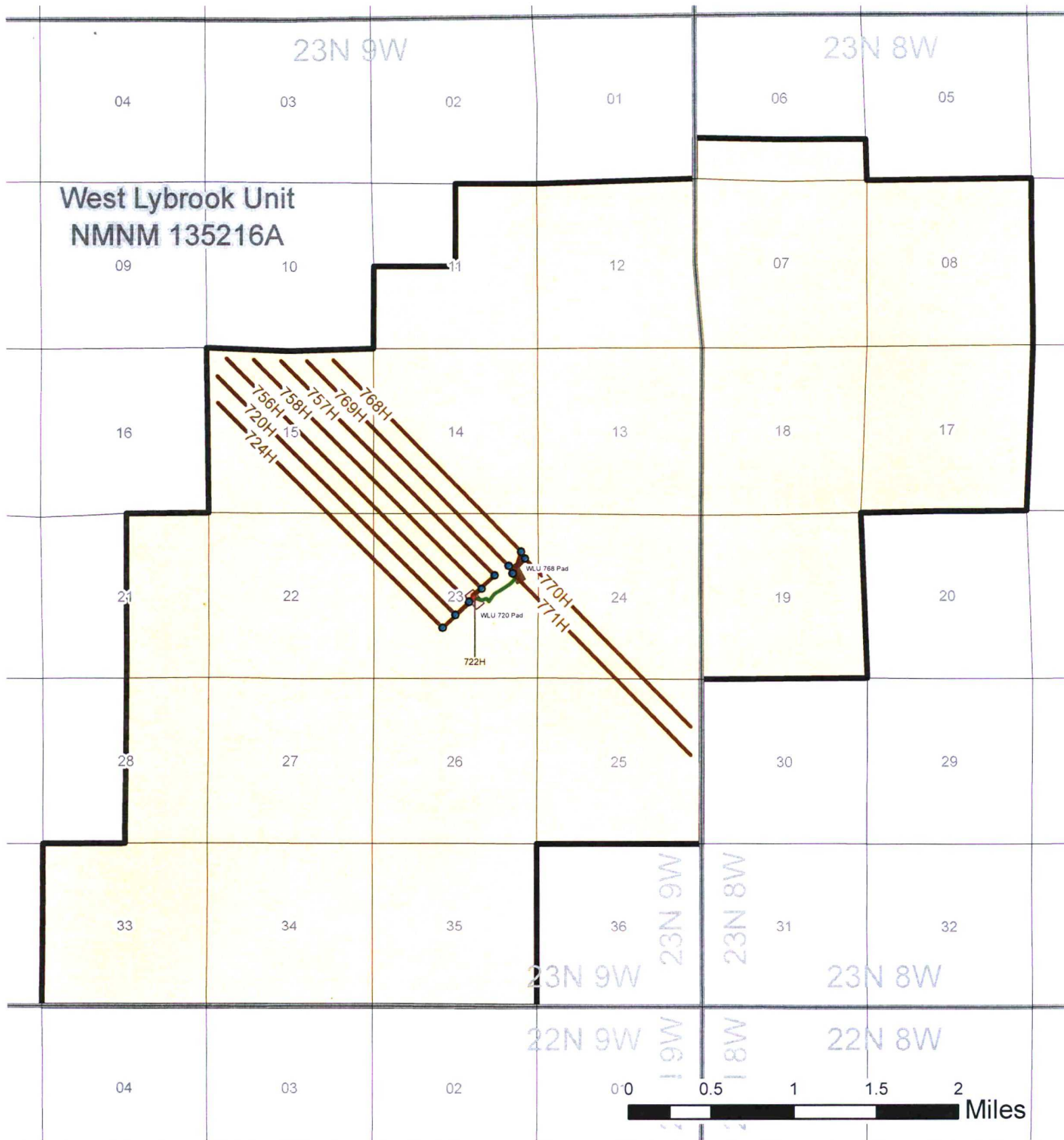
- *The Coriolis is proved per BLM Onshore Order #4 Measurement of Oil and API MPMS Chapter 4 Proving Systems; with a volumetric prover that meets the requirements set forth in Onshore Order #4. The prover is NIST traceable and water drawn on a bi-annual basis. Monthly proving will continue per the rule, unless a variance is granted by the Division. NMOCD representatives are sent the schedule to witness if desired. The temperature transmitter is verified on a semi-annual basis, unless more frequent verification is requested by the Division.*

(13) To obtain an exception to the requirement in Paragraph (12) of Subsection C of 19.15.18.15 NMAC that all measuring and recording devices be checked for accuracy once each month, either the producer or transporter may file a request with the director setting forth facts pertinent to the exception. The application shall include a history of the average factors previously obtained, both tabulated and plotted on a graph of factors versus time, showing that the particular installation has experienced no erratic drift. The applicant shall also furnish evidence that the other interested party has agreed to the exception. The director may then set the frequency for determination of the system's accuracy at the interval which the director deems prudent.

- *N/A*

D. The division may revoke its approval of an ACT system's form C-106 if the system's operator fails to operate it in compliance with 19.15.18.15 NMAC.





WLU 720 Pad Lease Plat Map

San Juan
County, NM

Scale (absolute) -
1:50,000



ENDURING
RESOURCES, LLC

Updated: 7/31/2019

District I
1625 N. French Drive, Hobbs, NM 88240
Phone: (575) 393-6161 Fax: (575) 393-0720

District II
811 S. First Street, Artesia, NM 88210
Phone: (575) 748-1283 Fax: (575) 748-9720

District III
1000 Rio Brazos Road, Aztec, NM 87410
Phone: (505) 334-6178 Fax: (505) 334-6170

District IV
1220 S. St. Francis Drive, Santa Fe, NM 87505
Phone: (505) 476-3460 Fax: (505) 476-3462

State of New Mexico
Energy, Minerals & Natural Resources Department

Form C-102
Revised August 1, 2011

Submit one copy to
Appropriate District Office

OIL CONSERVATION DIVISION
1220 South St. Francis Drive
Santa Fe, NM 87505

☐ AMENDED REPORT

WELL LOCATION AND ACREAGE DEDICATION PLAT

*API Number 30.045.35891		*Pool Code 98157	*Pool Name LYBROOK MANCOS W
*Property Code 321259	*Property Name W IYBROOK UNIT		*Well Number 768H
*GRID No. 372286	*Operator Name ENDURING RESOURCES, LLC		*Elevation 6737'

¹⁰ Surface Location

UL or lot no.	Section	Township	Range	Lot Idn	Feet from the	North/South line	Feet from the	East/West line	County
H	23	23N	9W		1846	NORTH	749	EAST	SAN JUAN

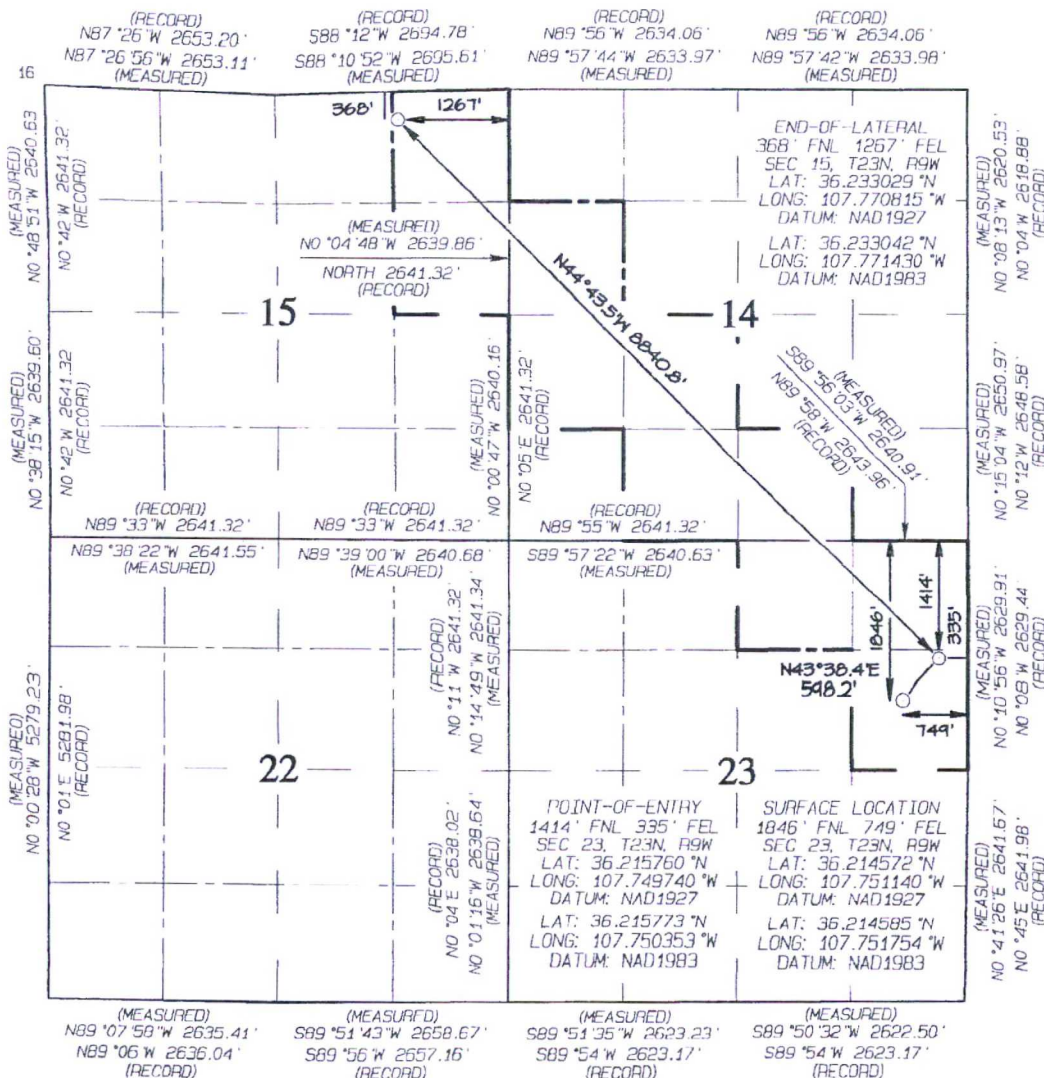
¹¹ Bottom Hole Location If Different From Surface

UL or lot no.	Section	Township	Range	Lot Idn	Feet from the	North/South line	Feet from the	East/West line	County
A	15	23N	9W		368	NORTH	1267	EAST	SAN JUAN

¹² Dedicated Acres 400.0 SW/4 NW/4, N/2 SW/4
SE/4 SW/4, SW/4 SE/4 - Section 14
E/2 NE/4 - Section 15
N/2 NE/4, SE/4 NE/4 - Section 23

¹³ Joint or Infill ¹⁴ Consolidation Code ¹⁵ Order No.
R-14051 - 12,807.24 Acres

NO ALLOWABLE WILL BE ASSIGNED
TO THIS COMPLETION UNTIL ALL
INTERESTS HAVE BEEN CONSOLIDATED
OR A NON-STANDARD UNIT HAS
BEEN APPROVED BY THE DIVISION



¹⁷ OPERATOR CERTIFICATION

I hereby certify that the information contained herein is true and complete to the best of my knowledge and belief, and that this organization either owns a working interest or unleased mineral interest in the land including the proposed bottom-hole location or has a right to drill this well at this location pursuant to a contract with an owner of such a mineral of working interest or to a voluntary pooling agreement or a compulsory pooling order heretofore entered by the division.

Signature *[Signature]* Date 8/8/15
Printed Name *[Name]*
E-mail Address *[Email]*

¹⁸ SURVEYOR CERTIFICATION

I hereby certify that the well location shown on this plat was plotted from field notes of actual surveys made by me or under my supervision, and that the same is true and correct to the best of my belief.

Date Revised: AUGUST 7, 2019
Date of Survey: MAY 16, 2018

Signature and Seal of Professional Surveyor



JASON C. EDWARDS
Certificate Number 15269

District II
811 S. First Street, Artesia, NM 88210
Phone: (575) 748-1283 Fax: (575) 748-9720

District III
1000 Rio Brazos Road, Aztec, NM 87410
Phone: (505) 334-6178 Fax: (505) 334-6170

District IV
1220 S. St. Francis Drive, Santa Fe, NM 87505
Phone: (505) 476-3460 Fax: (505) 476-3462

OIL CONSERVATION DIVISION

1220 South St. Francis Drive
Santa Fe, NM 87505

Submit one copy to
Appropriate District Office

☐ AMENDED REPORT

WELL LOCATION AND ACREAGE DEDICATION PLAT

*API Number 30-045-35892	*Pool Code 98157	*Pool Name LYBROOK MANCOS W
*Property Code 321259	*Property Name W LYBROOK UNIT	*Well Number 769H
*OGRID No. 372286	*Operator Name ENDURING RESOURCES, LLC	*Elevation 6737'

10 Surface Location

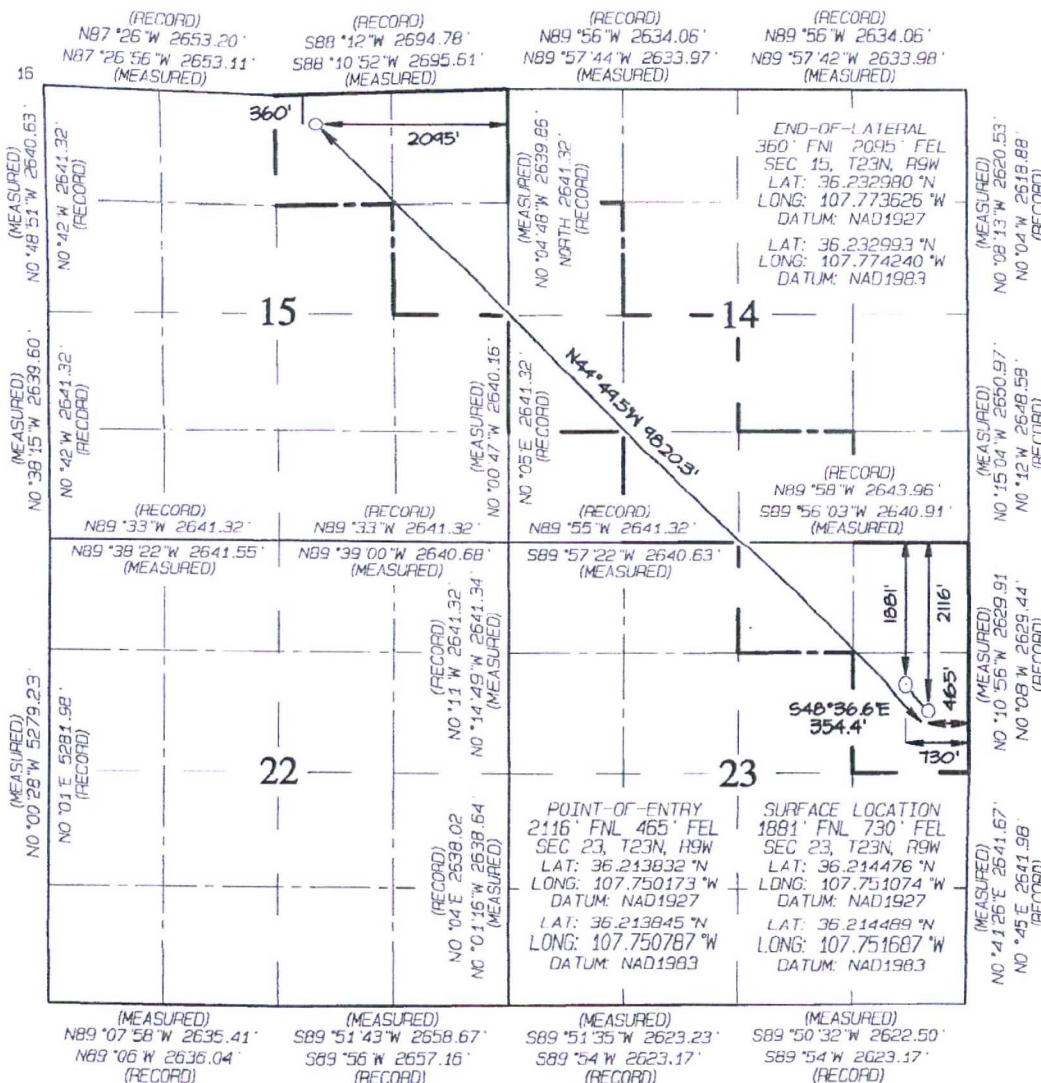
UL or lot no.	Section	Township	Range	Lot Idn	Feet from the	North/South line	Feet from the	East/West line	County
H	23	23N	9W		1881	NORTH	730	EAST	SAN JUAN

¹¹ Bottom Hole Location If Different From Surface

UL or lot no.	Section	Township	Range	Lot Idn	Feet from the	North/South line	Feet from the	East/West line	County
B	15	23N	9W		360	NORTH	2095	EAST	SAN JUAN

12 Dedicated Acres 440.0 SW/4 SE/4, SE/4 SW/4 N/2 SW/4, SW/4 NW/4 - Section 14 E/2 NE/4, NW/4 NE/4 - Section 15 SE/4 NE/4, N/2 NE/4 - Section 23	13 Joint or Infill	14 Consolidation Code	15 Order No. R-14051 - 12,807.24 Acres
NO ALLOWABLE WILL BE ASSIGNED TO THIS COMPLETION UNIT			

NO ALLOWABLE WILL BE ASSIGNED
TO THIS COMPLETION UNTIL ALL
INTERESTS HAVE BEEN CONSOLIDATED
OR A NON-STANDARD UNIT HAS
BEEN APPROVED BY THE DIVISION



17 OPERATOR CERTIFICATION

I hereby certify that the information contained herein is true and complete to the best of my knowledge and belief, and that this organization either owns a working interest or unleased mineral interest in the land including the proposed bottom-hole location or has a right to drill this well at this location pursuant to a contract with an owner of such a mineral interest, or has entered into a voluntary pooling agreement or a compulsory pooling order heretofore entered by the Division.

Signature [Signature] Date 8/8/19
Printed Name Alexander

E-mail Address

18 SURVEYOR CERTIFICATION

I hereby certify that the well location shown on this plat was plotted from field notes of actual surveys made by me or under my supervision, and that the same is true and correct to the best of my belief.

Date Revised: AUGUST 7, 2019
Date of Survey: MAY 16, 2018

Signature and Seal of Professional Surveyor



JASON C. EDWARDS

Certificate Number 15269

District I
1625 N. French Drive, Hobbs, NM 88240
Phone: (575) 393-6161 Fax: (575) 393-0720

District II
811 S. First Street, Artesia, NM 88210
Phone: (575) 748-1283 Fax: (575) 748-9720

District III
1000 Rio Brazos Road, Aztec, NM 87410
Phone: (505) 334-6178 Fax: (505) 334-6170

District IV
1220 S. St. Francis Drive, Santa Fe, NM 87505
Phone: (505) 476-3460 Fax: (505) 476-3462

State of New Mexico
Energy, Minerals & Natural Resources Department

Form C-102
Revised August 1, 2011

Submit one copy to
Appropriate District Office

OIL CONSERVATION DIVISION
1220 South St. Francis Drive
Santa Fe, NM 87505

☐ AMENDED REPORT

WELL LOCATION AND ACREAGE DEDICATION PLAT

*API Number 30045-35893		*Pool Code 98157	*Pool Name LYBROOK MANCOS W
*Property Code 321259	*Property Name W LYBROOK UNIT		*Well Number 770H
*GRID No. 372286	*Operator Name ENDURING RESOURCES, LLC		*Elevation 6737'

¹⁰ Surface Location

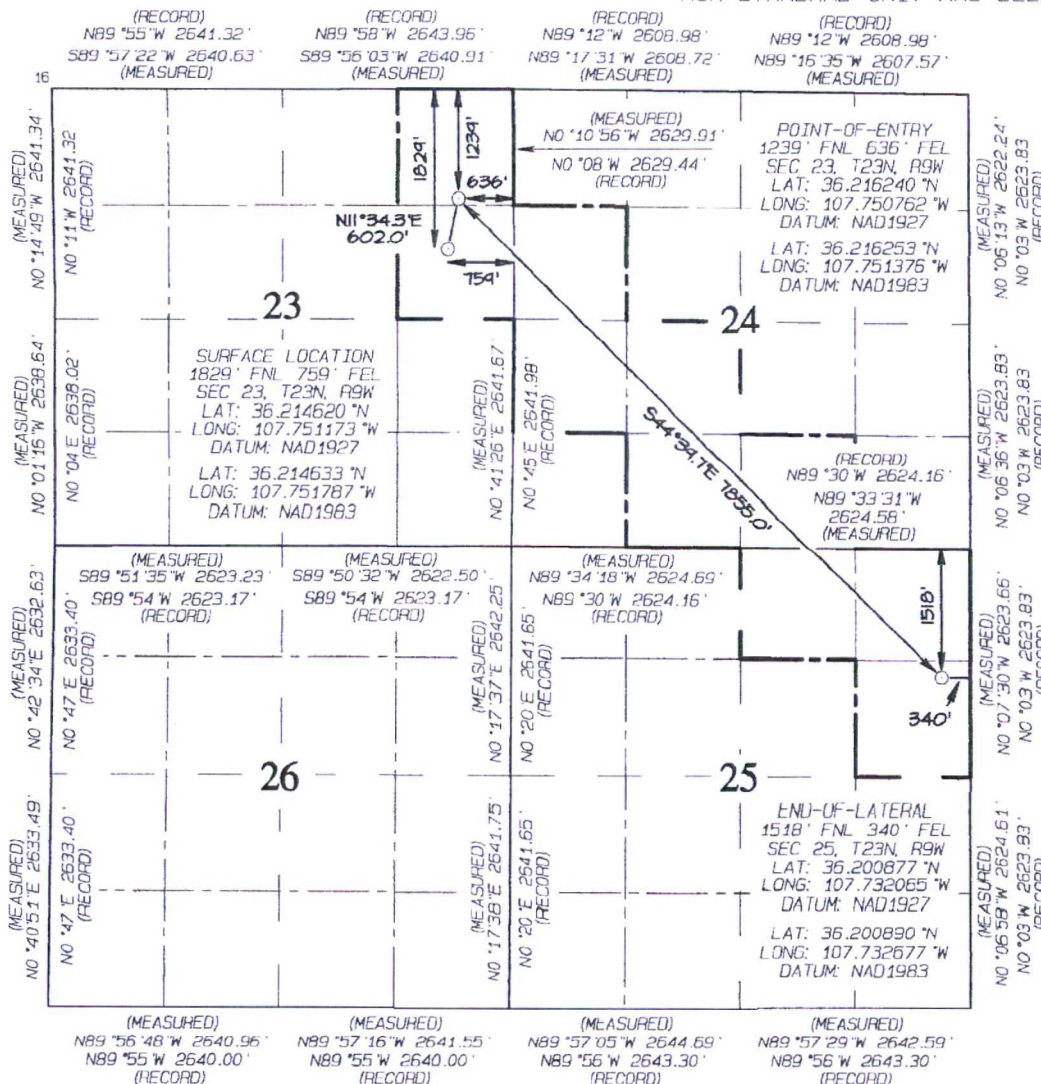
UL or lot no.	Section	Township	Range	Lot Idn	Feet from the	North/South line	Feet from the	East/West line	County
H	23	23N	9W		1829	NORTH	759	EAST	SAN JUAN

¹¹ Bottom Hole Location If Different From Surface

UL or lot no.	Section	Township	Range	Lot Idn	Feet from the	North/South line	Feet from the	East/West line	County
H	25	23N	9W		1518	NORTH	340	EAST	SAN JUAN

¹² Dedicated Acres 400.0	E/2 NE/4 - Section 23 SW/4 NW/4, N/2 SW/4 SE/4 SW/4, SW/4 SE/4 - Section 24 N/2 NE/4, SE/4 NE/4 - Section 25	¹³ Joint or Infill	¹⁴ Consolidation Code	¹⁵ Order No. R-14051 - 12,807.24 Acres
--	---	-------------------------------	----------------------------------	--

NO ALLOWABLE WILL BE ASSIGNED TO THIS COMPLETION
UNTIL ALL INTERESTS HAVE BEEN CONSOLIDATED OR A
NON-STANDARD UNIT HAS BEEN APPROVED BY THE DIVISION



¹⁷ OPERATOR CERTIFICATION

I hereby certify that the information contained herein is true and complete to the best of my knowledge and belief, and that this organization either owns a working interest or unleased mineral interest in the land including the proposed bottom-hole location or has a right to drill this well at this location pursuant to a contract with an owner of such a mineral or working interest, or to a voluntary pooling agreement or a compulsory pooling order heretofore entered by the division.

Signature: *[Signature]* Date: 8/8/19

Printed Name

E-mail Address

¹⁸ SURVEYOR CERTIFICATION

I hereby certify that the well location shown on this plat was plotted from field notes of actual surveys made by me or under my supervision, and that the same is true and correct to the best of my belief.

Date Revised: AUGUST 7, 2019

Date of Survey: MAY 16, 2018

Signature of Professional Surveyor



JASON C. EDWARDS

Certificate Number 15269

District I
1625 N. French Drive, Hobbs, NM 88240
Phone: (575) 393-6161 Fax: (575) 393-0720

District II
811 S. First Street, Artesia, NM 88210
Phone: (575) 748-1283 Fax: (575) 748-9720

District III
1000 Rio Brazos Road, Aztec, NM 87410
Phone: (505) 334-6178 Fax: (505) 334-6170

District IV
1220 S. St. Francis Drive, Santa Fe, NM 87505
Phone: (505) 476-3460 Fax: (505) 476-3462

State of New Mexico
Energy, Minerals & Natural Resources Department

Form C-102
Revised August 1, 2011

Submit one copy to
Appropriate District Office

OIL CONSERVATION DIVISION
1220 South St. Francis Drive
Santa Fe, NM 87505

☐ AMENDED REPORT

WELL LOCATION AND ACREAGE DEDICATION PLAT

1 API Number 30-045-35894		2 Pool Code 98157		3 Pool Name LYBROOK MANCOS W	
4 Property Code 321259		5 Property Name W LYBROOK UNIT			6 Well Number 771H
7 OGRID No. 372286		8 Operator Name ENDURING RESOURCES, LLC			9 Elevation 6737'

10 Surface Location

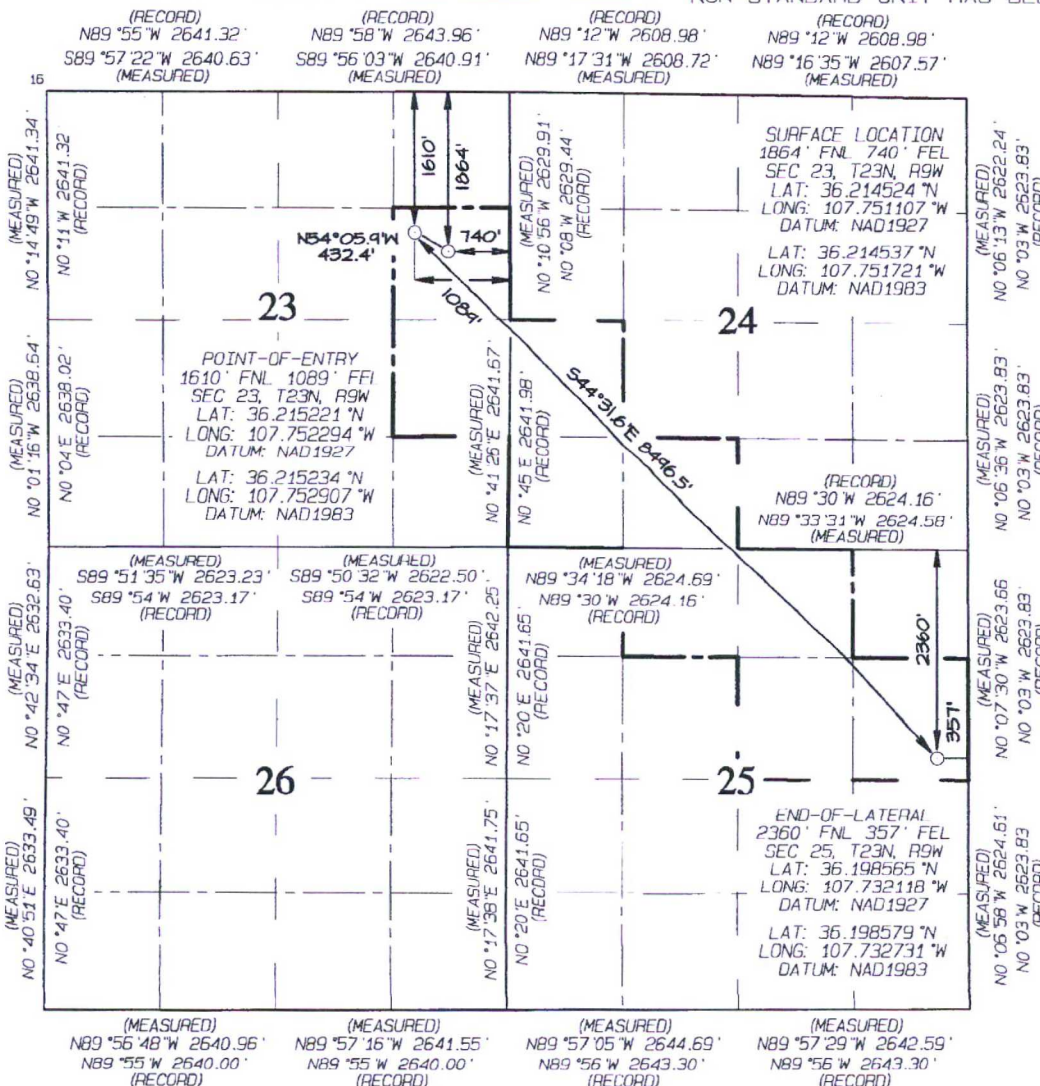
UL or lot no.	Section	Township	Range	Lot Idn	Feet from the	North/South line	Feet from the	East/West line	County
H	23	23N	9W		1864	NORTH	740	EAST	SAN JUAN

11 Bottom Hole Location If Different From Surface

UL or lot no.	Section	Township	Range	Lot Idn	Feet from the	North/South line	Feet from the	East/West line	County
H	25	23N	9W		2360	NORTH	357	EAST	SAN JUAN

12 Dedicated Acres 360.0		13 Joint or Infill		14 Consolidation Code		15 Order No. R-14051 - 12,807.24 Acres	
NE/4 NW/4, NW/4 NE/4 S/2 NE/4 - Section 25 NW/4 SW/4, S/2 SW/4 - Section 24 SE/4 NE/4, NE/4 SE/4 - Section 23							

NO ALLOWABLE WILL BE ASSIGNED TO THIS COMPLETION
UNTIL ALL INTERESTS HAVE BEEN CONSOLIDATED OR A
NON-STANDARD UNIT HAS BEEN APPROVED BY THE DIVISION



17 OPERATOR CERTIFICATION

I hereby certify that the information contained herein is true and complete to the best of my knowledge and belief, and that this organization either owns a working interest or unleased mineral interest in the land including the proposed bottom-hole location or has a right to drill this well at this location pursuant to a contract with an owner of such a mineral or working interest, or to a voluntary pooling agreement or a compulsory pooling order heretofore entered by the division.

Signature: *[Signature]* Date: 8/8/19

Printed Name: _____

E-mail Address: _____

18 SURVEYOR CERTIFICATION

I hereby certify that the well location shown on this plat was plotted from field notes of actual surveys made by me or under my supervision, and that the same is true and correct to the best of my belief.

Date Revised: AUGUST 7, 2019
Date of Survey: MAY 16, 2018

Signature and Seal of Professional Surveyor

JASON C. EDWARDS
NEW MEXICO
REGISTERED PROFESSIONAL SURVEYOR
15269

JASON C. EDWARDS
Certificate Number 15269

District I
1625 N. French Drive, Hobbs, NM 88240
Phone: (575) 393-6161 Fax: (575) 393-0720

District II
811 S. First Street, Artesia, NM 88210
Phone: (575) 748-1283 Fax: (575) 748-9720

District III
1000 Rio Brazos Road, Aztec, NM 87410
Phone: (505) 334-6178 Fax: (505) 334-6170

District IV
1220 S. St. Francis Drive, Santa Fe, NM 87505
Phone: (505) 476-3460 Fax: (505) 476-3462

State of New Mexico
Energy, Minerals & Natural Resources Department

Form C-102
Revised August 1, 2011

Submit one copy to
Appropriate District Office

OIL CONSERVATION DIVISION
1220 South St. Francis Drive
Santa Fe, NM 87505

☐ AMENDED REPORT

WELL LOCATION AND ACREAGE DEDICATION PLAT

¹ API Number 30-045-35818	² Pool Code 98157	³ Pool Name LYBROOK MANCOS W
⁴ Property Code 321259	⁵ Property Name W LYBROOK UNIT	⁶ Well Number 720H
⁷ GRID No. 372286	⁸ Operator Name ENDURING RESOURCES, LLC	⁹ Elevation 6719'

¹⁰ Surface Location

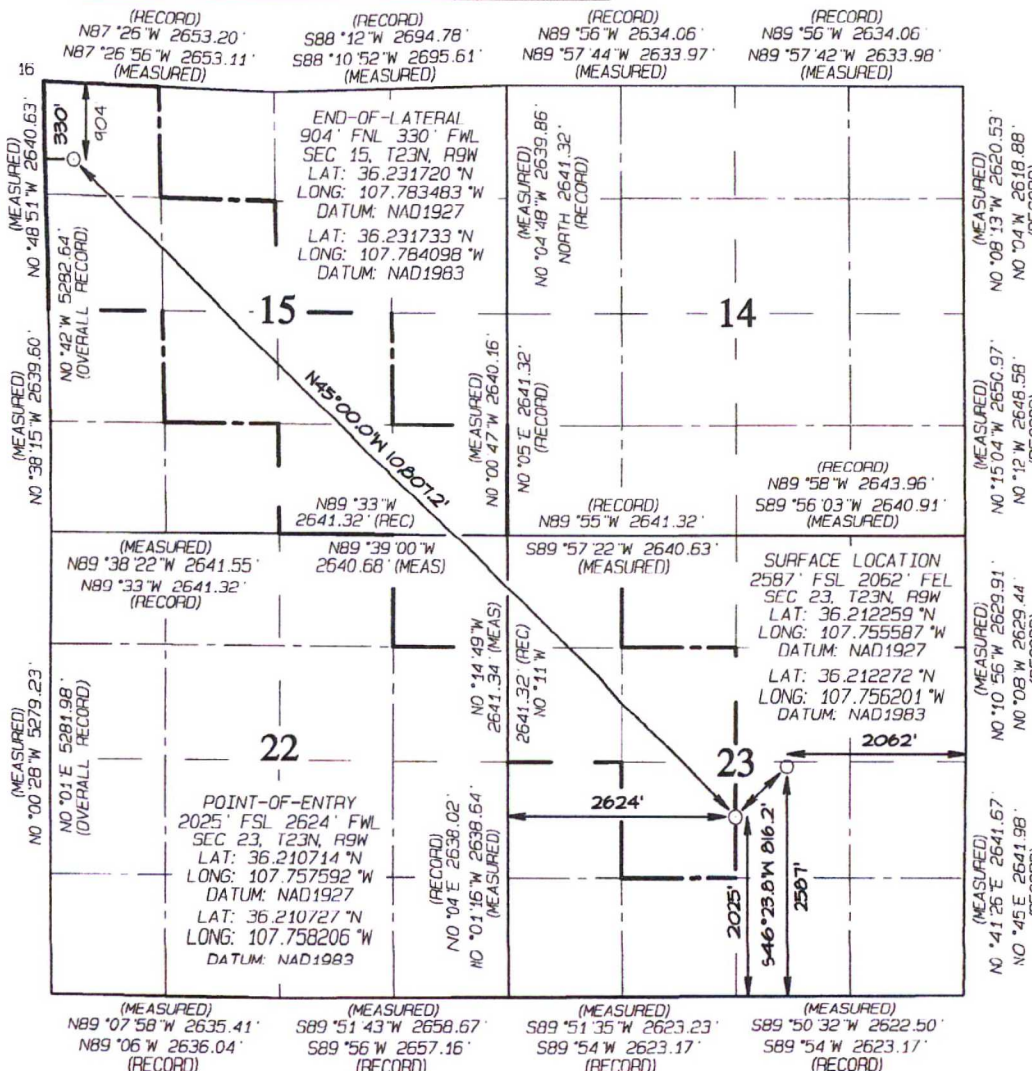
UL or lot no.	Section	Township	Range	Lot Idn	Feet from the	North/South line	Feet from the	East/West line	County
J	23	23N	9W		2587	SOUTH	2062	EAST	SAN JUAN

¹¹ Bottom Hole Location If Different From Surface

UL or lot no.	Section	Township	Range	Lot Idn	Feet from the	North/South line	Feet from the	East/West line	County
D	15	23N	9W		904	NORTH	330	WEST	SAN JUAN

¹² Dedicated Acres 480.00	W/2 NW/4, SE/4 NW/4 NE/4 SW/4, W/2 NE/4 SE/4 SE/4 - Section 15 NE/4 NE/4 - Section 22 W/2 NW/4, SE/4 NW/4 NE/4 SW/4 - Section 23	¹³ Joint or Infill	¹⁴ Consolidation Code	¹⁵ Order No. R-14051 - 12,807.24 Acres
--	---	-------------------------------	----------------------------------	---

NO ALLOWABLE WILL BE ASSIGNED
TO THIS COMPLETION UNTIL ALL
INTERESTS HAVE BEEN CONSOLIDATED
OR A NON-STANDARD UNIT HAS
BEEN APPROVED BY THE DIVISION



¹⁷ OPERATOR CERTIFICATION

I hereby certify that the information contained herein is true and complete to the best of my knowledge and belief, and that this organization either owns a working interest or unleased mineral interest in the land including the proposed bottom-hole location or has a right to drill this well at this location pursuant to a contract with an owner of such a mineral or working interest or to a voluntary pooling agreement or a compulsory pooling order heretofore entered by the division.

Signature **Lacey Granillo** Date **8/8/15**
Printed Name
lgranillo@enduringresources.com
E-mail Address

¹⁸ SURVEYOR CERTIFICATION

I hereby certify that the well location shown on this plat was plotted from field notes of actual surveys made by me or under my supervision, and that the same is true and correct to the best of my belief.

Date Revised: **NOVEMBER 20, 2018**
Survey Date: **OCTOBER 19, 2015**

Signature and Seal of Professional Surveyor



JASON C. EDWARDS
Certificate Number **15269**

District I
1625 N. French Drive, Hobbs, NM 88240
Phone: (575) 393-6161 Fax: (575) 393-0720

District II
811 S. First Street, Artesia, NM 88210
Phone: (575) 748-1283 Fax: (575) 748-9720

District III
1000 Rio Brazos Road, Aztec, NM 87410
Phone: (505) 334-6178 Fax: (505) 334-6170

District IV
1220 S. St. Francis Drive, Santa Fe, NM 87505
Phone: (505) 476-3460 Fax: (505) 476-3462

State of New Mexico
Energy, Minerals & Natural Resources Department

Form C-102
Revised August 1, 2011

Submit one copy to
Appropriate District Office

OIL CONSERVATION DIVISION

1220 South St. Francis Drive
Santa Fe, NM 87505

☐ AMENDED REPORT

WELL LOCATION AND ACREAGE DEDICATION PLAT

*API Number 30-045-35779		*Pool Code	*Pool Name LYBROOK MANCOS W
*Property Code	*Property Name W LYBROOK UNIT		*Well Number 722H
*GRID No. 120782	*Operator Name WPX ENERGY PRODUCTION, LLC		*Elevation 6719'

¹⁰ Surface Location

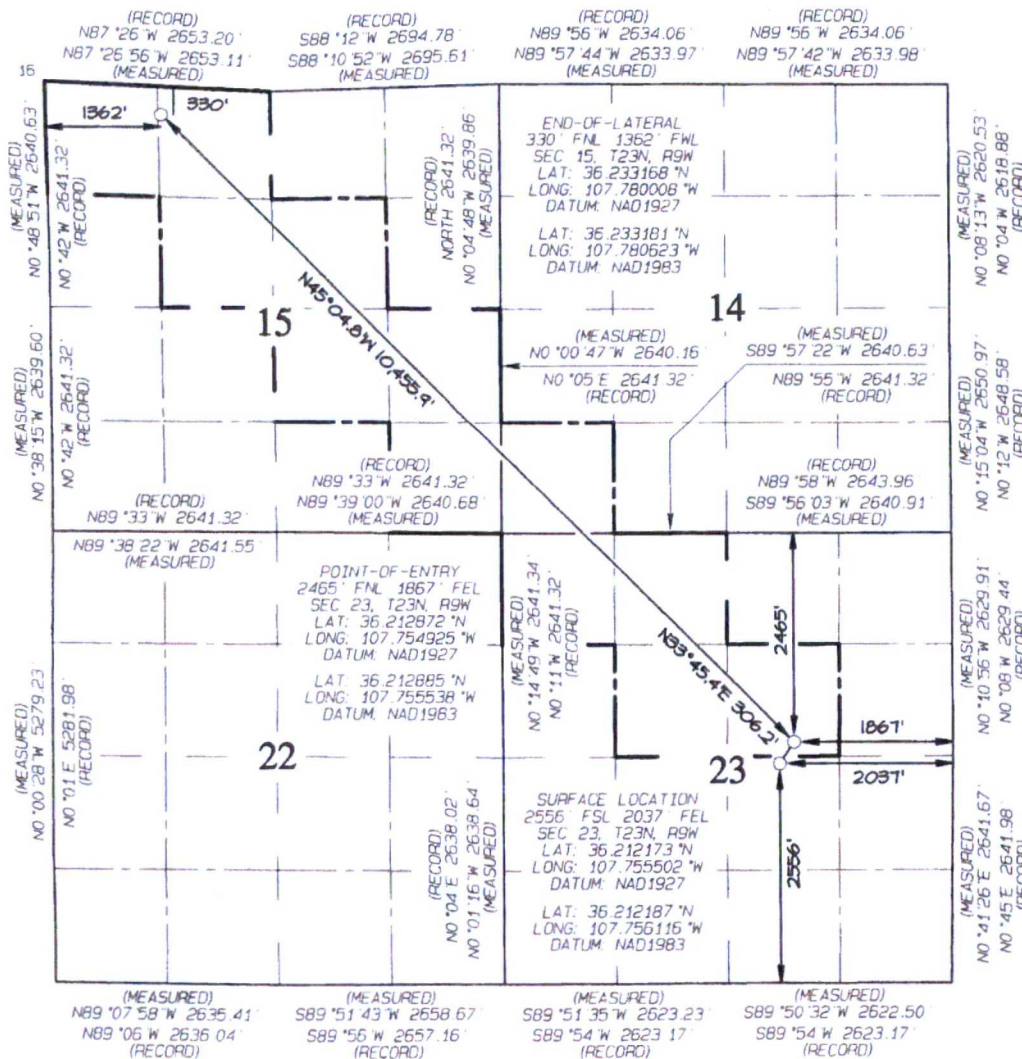
UL or lot no.	Section	Township	Range	Lot Idn	Feet from the	North/South line	Feet from the	East/West line	County
J	23	23N	9W		2556	SOUTH	2037	EAST	SAN JUAN

¹¹ Bottom Hole Location If Different From Surface

UL or lot no.	Section	Township	Range	Lot Idn	Feet from the	North/South line	Feet from the	East/West line	County
C	15	23N	9W		330	NORTH	1362	WEST	SAN JUAN

¹² Dedicated Acres 480.0 SW/4 SW/4 - Section 14 N/2 NW/4, SE/4 NW/4, SW/4 NE/4 N/2 SE/4, SE/4 SE/4 - Section 15 N/2 NW/4, SE/4 NW/4 SW/4 NE/4 - Section 23	¹³ Joint or Infill	¹⁴ Consolidation Code	¹⁵ Order No. R-14051 - 12,807.24 Acres
--	-------------------------------	----------------------------------	--

NO ALLOWABLE WILL BE ASSIGNED TO THIS COMPLETION
UNTIL ALL INTERESTS HAVE BEEN CONSOLIDATED OR A
NON-STANDARD UNIT HAS BEEN APPROVED BY THE DIVISION



¹⁷ OPERATOR CERTIFICATION

I hereby certify that the information contained herein is true and complete to the best of my knowledge and belief, and that this organization either owns a working interest or unleased mineral interest in the land including the proposed bottom-hole location or has a right to drill this well at this location pursuant to a contract with an owner of such a mineral or working interest, or to a voluntary pooling agreement or a compulsory pooling order heretofore entered by the division.

Signature: *[Signature]* Date: 8/15/15

Printed Name: _____

E-mail Address: _____

¹⁸ SURVEYOR CERTIFICATION

I hereby certify that the well location shown on this plat was plotted from field notes of actual surveys made by me or under my supervision, and that the same is true and correct to the best of my belief.

Date Revised: APRIL 26, 2016
Survey Date: OCTOBER 19, 2015

Signature and Seal of Professional Surveyor

JASON C. EDWARDS
NEW MEXICO
REGISTERED PROFESSIONAL SURVEYOR
15269

JASON C. EDWARDS
Certificate Number 15269

District I
1625 N. French Drive, Hobbs, NM 88240
Phone: (575) 393-6161 Fax: (575) 393-0720

District II
811 S. First Street, Artesia, NM 88210
Phone: (575) 748-1283 Fax: (575) 748-9720

District III
1000 Rio Brazos Road, Aztec, NM 87410
Phone: (505) 334-6178 Fax: (505) 334-6170

District IV
1220 S. St. Francis Drive, Santa Fe, NM 87505
Phone: (505) 476-3460 Fax: (505) 476-3462

State of New Mexico
Energy, Minerals & Natural Resources Department

Form C-102
Revised August 1, 2011

Submit one copy to
Appropriate District Office

OIL CONSERVATION DIVISION

1220 South St. Francis Drive
Santa Fe, NM 87505

☐ AMENDED REPORT

WELL LOCATION AND ACREAGE DEDICATION PLAT

*API Number 30-045-35811		*Pool Code 98157		*Pool Name LYBROOK MANCOS W	
*Property Code 321259		*Property Name W LYBROOK UNIT			*Well Number 724H
*GRID No. 372286		*Operator Name ENDURING RESOURCES, LLC			*Elevation 6719'

¹⁰ Surface Location

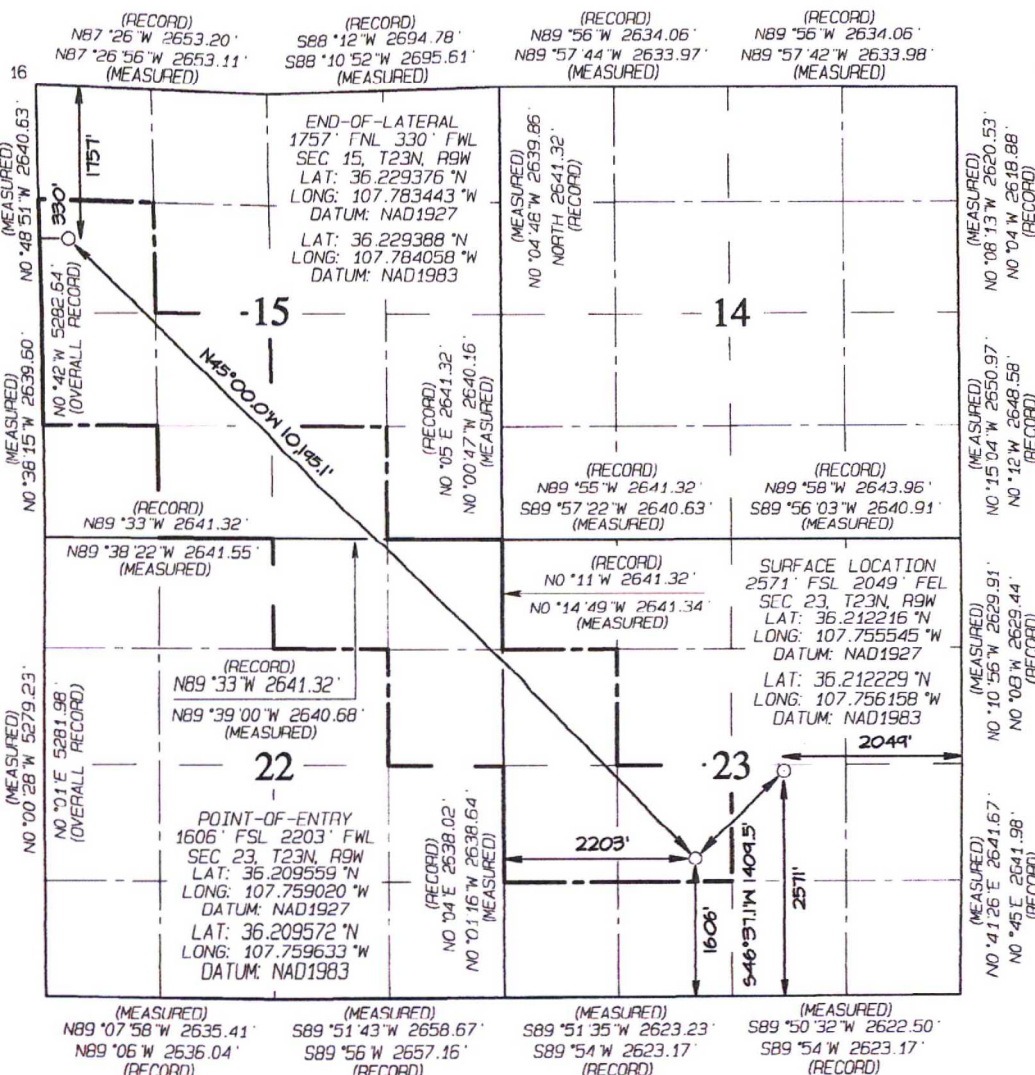
UL or lot no.	Section	Township	Range	Lot Idn	Feet from the	North/South line	Feet from the	East/West line	County
J	23	23N	9W		2571	SOUTH	2049	EAST	SAN JUAN

¹¹ Bottom Hole Location If Different From Surface

UL or lot no.	Section	Township	Range	Lot Idn	Feet from the	North/South line	Feet from the	East/West line	County
E	15	23N	9W		1757	NORTH	330	WEST	SAN JUAN

¹² Dedicated Acres 440.00		¹³ Joint or Infill		¹⁴ Consolidation Code		¹⁵ Order No. R-14051 - 12,807.24 Acres	
SW/4 NW/4, N/2 SW/4 SE/4 SW/4, SE/4 SE/4 - Section 15 N/2 NE/4, SE/4 NE/4 - Section 22 SW/4 NW/4, N/2 SW/4 - Section 23							

NO ALLOWABLE WILL BE ASSIGNED
TO THIS COMPLETION UNTIL ALL
INTERESTS HAVE BEEN CONSOLIDATED
OR A NON-STANDARD UNIT HAS
BEEN APPROVED BY THE DIVISION



¹⁷ OPERATOR CERTIFICATION

I hereby certify that the information contained herein is true and complete to the best of my knowledge and belief, and that this organization either owns a working interest or unleased mineral interest in the land including the proposed bottom hole location or has a right to drill this well at this location pursuant to a contract with an owner of such a mineral or working interest or to a voluntary pooling agreement or a compulsory pooling order heretofore entered by the division.

Signature Lacey Granillo Date 8/8/15
Printed Name Lacey Granillo
E-mail Address lgranillo@enduringresources.com

¹⁸ SURVEYOR CERTIFICATION

I hereby certify that the well location shown on this plat was plotted from field notes of actual surveys made by me or under my supervision, and that the same is true and correct to the best of my belief.

Date Revised: NOVEMBER 20, 2018
Survey Date: OCTOBER 19, 2015

Signature and Seal of Professional Surveyor



JASON C. EDWARDS

Certificate Number 15269

District I
1625 N. French Drive, Hobbs, NM 88240
Phone: (575) 393-6161 Fax: (575) 393-0720

District II
811 S. First Street, Artesia, NM 88210
Phone: (575) 748-1283 Fax: (575) 748-9720

District III
1000 Rio Brazos Road, Aztec, NM 87410
Phone: (505) 334-6178 Fax: (505) 334-6170

District IV
1220 S. St. Francis Drive, Santa Fe, NM 87505
Phone: (505) 476-3460 Fax: (505) 476-3462

State of New Mexico
Energy, Minerals & Natural Resources Department

Form C-102
Revised August 1, 2011

Submit one copy to
Appropriate District Office

OIL CONSERVATION DIVISION

1220 South St. Francis Drive
Santa Fe, NM 87505

☐ AMENDED REPORT

WELL LOCATION AND ACREAGE DEDICATION PLAT

*API Number 30-045-35819		*Pool Code 98157	*Pool Name LYBROOK MANCOS W
*Property Code 321259	*Property Name W LYBROOK UNIT		*Well Number 756H
*GRID No. 372286	*Operator Name ENDURING RESOURCES, LLC		*Elevation 6719'

10 Surface Location

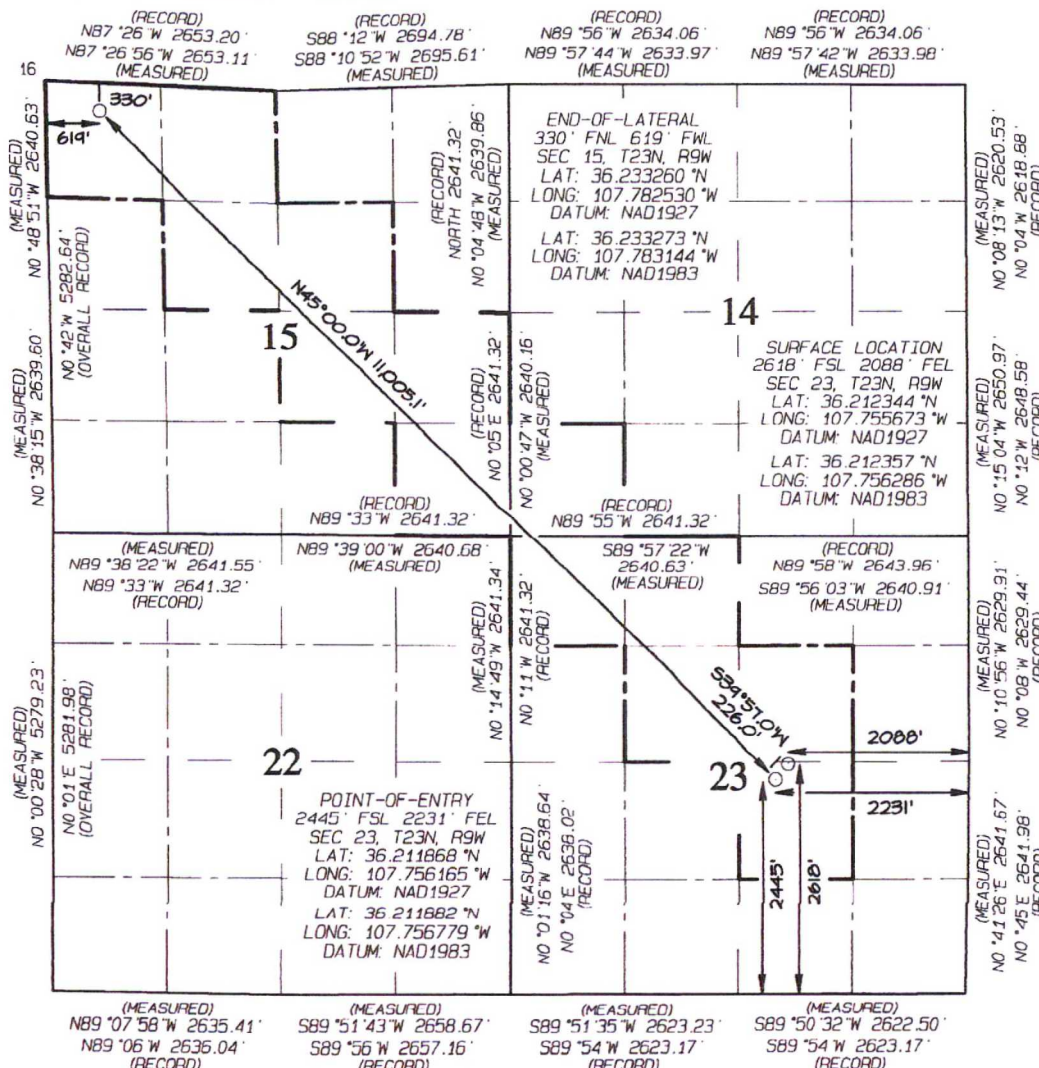
UL or lot no.	Section	Township	Range	Lot Idn	Feet from the	North/South line	Feet from the	East/West line	County
J	23	23N	9W		2618	SOUTH	2088	EAST	SAN JUAN

11 Bottom Hole Location If Different From Surface

UL or lot no.	Section	Township	Range	Lot Idn	Feet from the	North/South line	Feet from the	East/West line	County
D	15	23N	9W		330	NORTH	619	WEST	SAN JUAN

12 Dedicated Acres 520.00 SW/4 SW/4 - Section 14 N/2 NW/4, SE/4 NW/4, SW/4 NE/4 N/2 SE/4, SE/4 SE/4 - Section 15 N/2 NW/4, SE/4 NW/4 SW/4 NE/4, NW/4 SE/4 - Section 23		13 Joint or Infill	14 Consolidation Code	15 Order No. R-14051 - 12,807.24 Acres
---	--	--------------------	-----------------------	---

NO ALLOWABLE WILL BE ASSIGNED
TO THIS COMPLETION UNTIL ALL
INTERESTS HAVE BEEN CONSOLIDATED
OR A NON-STANDARD UNIT HAS
BEEN APPROVED BY THE DIVISION



17 OPERATOR CERTIFICATION

I hereby certify that the information contained herein is true and complete to the best of my knowledge and belief, and that this organization either owns a working interest or unleased mineral interest in the land including the proposed bottom-hole location or has a right to drill this well at this location pursuant to a contract with an owner of such a mineral or working interest, or to a voluntary pooling agreement or a compulsory pooling order heretofore entered by the division.

Signature _____ Date _____
Lacey Granillo

Printed Name
lgranillo@enduringresources.com

E-mail Address

18 SURVEYOR CERTIFICATION

I hereby certify that the well location shown on this plat was plotted from field notes of actual surveys made by me or under my supervision, and that the same is true and correct to the best of my belief.

Date Revised: NOVEMBER 20, 2018
Survey Date: OCTOBER 19, 2015

Signature and Seal of Professional Surveyor



JASON C. EDWARDS

Certificate Number 15269

District I
1625 N. French Drive, Hobbs, NM 88240
Phone: (575) 393-6161 Fax: (575) 393-0720

District II
811 S. First Street, Artesia, NM 88210
Phone: (505) 748-1283 Fax: (575) 748-9720

District III
1000 Rio Brazos Road, Aztec, NM 87410
Phone: (505) 334-6178 Fax: (505) 334-6170

District IV
1220 S. St. Francis Drive, Santa Fe, NM 87505
Phone: (505) 476-3460 Fax: (505) 476-3462

State of New Mexico
Energy, Minerals & Natural Resources Department

Form C-102
Revised August 1, 2011

Submit one copy to
Appropriate District Office

OIL CONSERVATION DIVISION
1220 South St. Francis Drive
Santa Fe, NM 87505

☐ AMENDED REPORT

WELL LOCATION AND ACREAGE DEDICATION PLAT

*API Number 30-045-35807		*Pool Code 98157	*Pool Name LYBROOK MANCOS W
*Property Code 321259	*Property Name W LYBROOK UNIT		*Well Number 757H
*GRID No. 372286	*Operator Name ENDURING RESOURCES, LLC		*Elevation 6719'

10 Surface Location

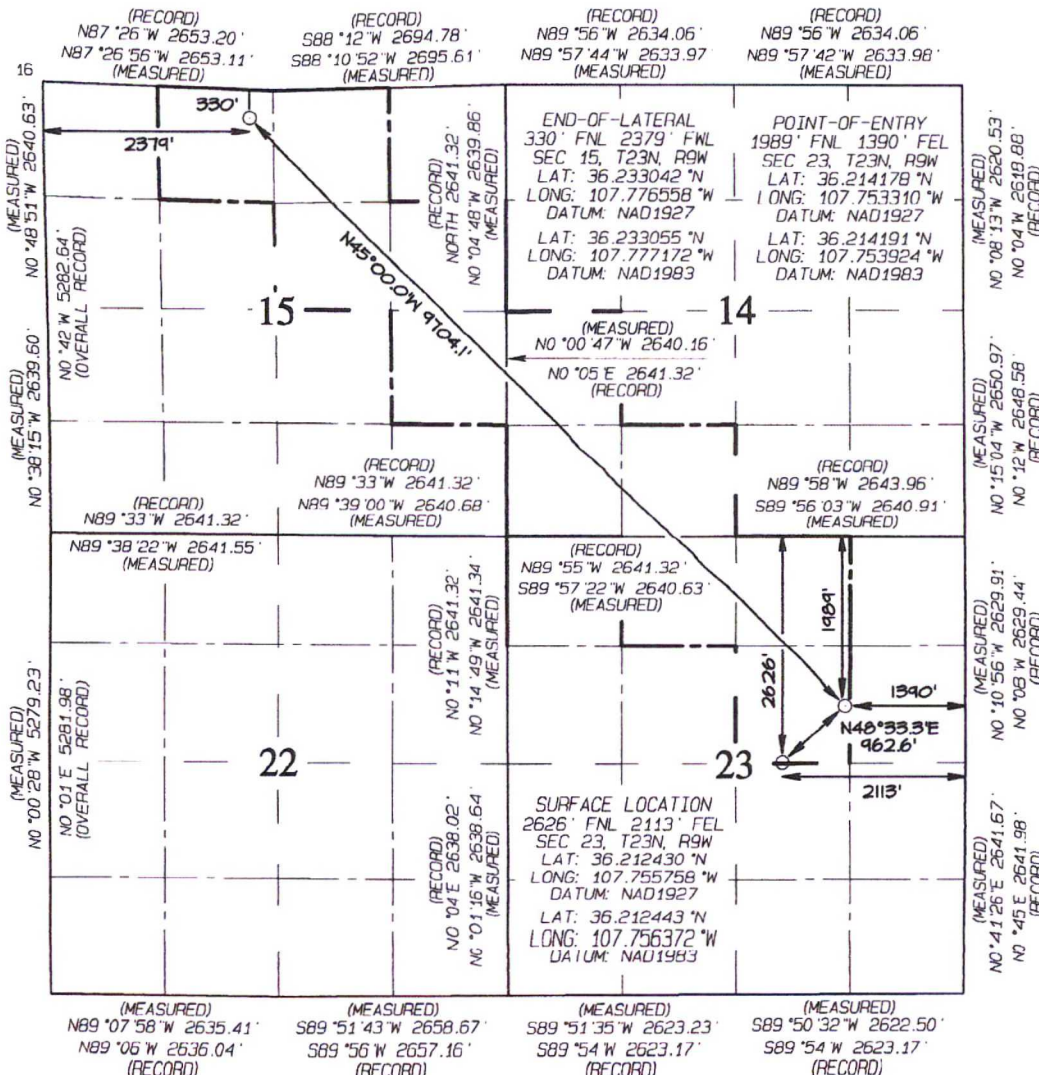
UL or lot no.	Section	Township	Range	Lot Idn	Feet from the	North/South line	Feet from the	East/West line	County
G	23	23N	9W		2626	NORTH	2113	EAST	SAN JUAN

11 Bottom Hole Location If Different From Surface

UL or lot no.	Section	Township	Range	Lot Idn	Feet from the	North/South line	Feet from the	East/West line	County
C	15	23N	9W		330	NORTH	2379	WEST	SAN JUAN

12 Dedicated Acres 440.00 W/2 SW/4, SE/4 SW/4 - Section 14 NE/4 NW/4, W/2 NE/4 SE/4 NE/4, NE/4 SE/4 - Section 15 NE/4 NW/4, W/2 NE/4 - Section 23		13 Joint or Infill	14 Consolidation Code	15 Order No. R-14051 - 12,807.24 Acres
---	--	--------------------	-----------------------	--

NO ALLOWABLE WILL BE ASSIGNED
TO THIS COMPLETION UNTIL ALL
INTERESTS HAVE BEEN CONSOLIDATED
OR A NON-STANDARD UNIT HAS
BEEN APPROVED BY THE DIVISION



17 OPERATOR CERTIFICATION

I hereby certify that the information contained herein is true and complete to the best of my knowledge and belief, and that this organization either owns a working interest or unleased mineral interest in the land including the proposed bottom-hole location or has a right to drill this well at this location pursuant to a contract with an owner of such a mineral or working interest, or to a voluntary pooling agreement or a compulsory pooling order heretofore entered by the division.

Signature: Lacey Granillo Date: 8/8/19

Printed Name: Lacey Granillo

E-mail Address: lgranillo@enduringresources.com

18 SURVEYOR CERTIFICATION

I hereby certify that the well location shown on this plat was plotted from field notes of actual surveys made by me or under my supervision, and that the same is true and correct to the best of my belief.

Date Revised: NOVEMBER 20, 2018
Survey Date: OCTOBER 19, 2015

Signature and Seal of Professional Surveyor



JASON C. EDWARDS
Certificate Number 15269

District I
1625 N. French Drive, Hobbs, NM 88240
Phone: (575) 393-6161 Fax: (575) 393-0720

District II
811 S. First Street, Artesia, NM 88210
Phone: (575) 748-1283 Fax: (575) 748-9720

District III
1000 Rio Brazos Road, Aztec, NM 87410
Phone: (505) 334-6178 Fax: (505) 334-6170

District IV
1220 S. St. Francis Drive, Santa Fe, NM 87505
Phone: (505) 476-3460 Fax: (505) 476-3462

State of New Mexico
Energy, Minerals & Natural Resources Department

Form C-102
Revised August 1, 2011

Submit one copy to
Appropriate District Office

OIL CONSERVATION DIVISION

1220 South St. Francis Drive
Santa Fe, NM 87505

☐ AMENDED REPORT

WELL LOCATION AND ACREAGE DEDICATION PLAT

¹ API Number 30-045-35810		² Pool Code 98157	³ Pool Name LYBROOK MANCOS W
⁴ Property Code 321259	⁵ Property Name W LYBROOK UNIT		⁶ Well Number 758H
⁷ GRID No. 372286	⁸ Operator Name ENDURING RESOURCES, LLC		⁹ Elevation 6719'

¹⁰ Surface Location

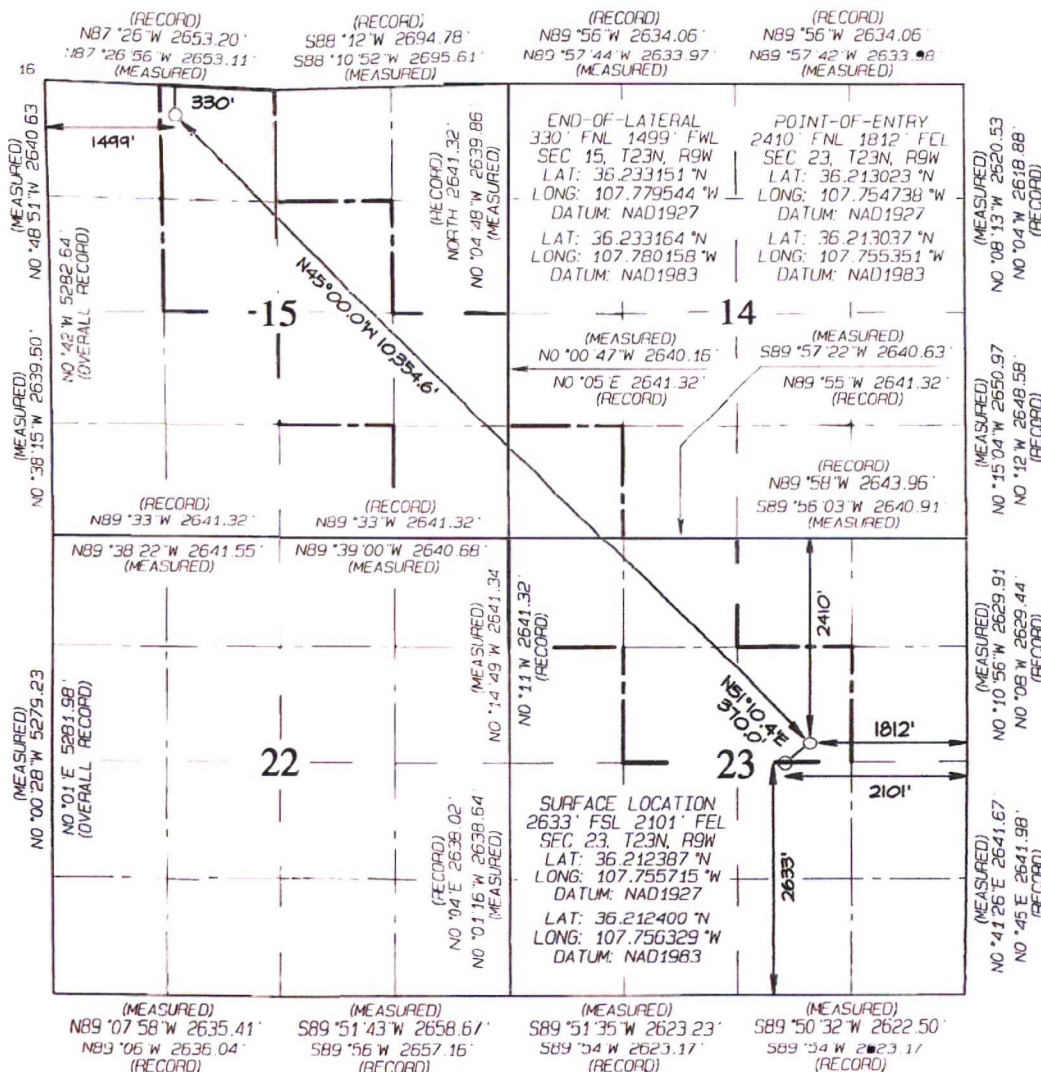
UL or lot no.	Section	Township	Range	Lot Idn	Feet from the	North/South line	Feet from the	East/West line	County
J	23	23N	9W		2633	SOUTH	2101	EAST	SAN JUAN

¹¹ Bottom Hole Location If Different From Surface

UL or lot no.	Section	Township	Range	Lot Idn	Feet from the	North/South line	Feet from the	East/West line	County
C	15	23N	9W		330	NORTH	1499'	WFST	SAN JUAN

¹² Dedicated Acres 440.00	SW/4 SW/4 - Section 14 E/2 NW/4, SW/4 NE/4 N/2 SE/4, SE/4 SE/4 - Section 15 N/2 NW/4, SE/4 NW/4 SW/4 NE/4 - Section 23	¹³ Joint or Infill	¹⁴ Consolidation Code	¹⁵ Order No. R-14051 - 12,807.24 Acres
---	--	-------------------------------	----------------------------------	--

NO ALLOWABLE WELL BE ASSIGNED
TO THIS COMPLETION UNTIL ALL
INTERESTS HAVE BEEN CONSOLIDATED
OR A NON-STANDARD UNIT HAS
BEEN APPROVED BY THE DIVISION



¹⁷ OPERATOR CERTIFICATION

I hereby certify that the information contained herein is true and complete to the best of my knowledge and belief, and that this organization either owns a working interest or unleased mineral interest in the land including the proposed bottom-hole location or has a right to drill this well at this location pursuant to a contract with an owner of such a mineral or working interest, or to a voluntary pooling agreement or a compulsory pooling order heretofore entered by the division.

Signature: *Lacey Granillo* Date: 8/15
Printed Name: Lacey Granillo
E-mail Address: lgranillo@enduringresources.com

¹⁸ SURVEYOR CERTIFICATION

I hereby certify that the well location shown on this plat was plotted from field notes of actual surveys made by me or under my supervision, and that the same is true and correct to the best of my belief.

Date Revised: NOVEMBER 20, 2018
Survey Date: OCTOBER 19, 2015

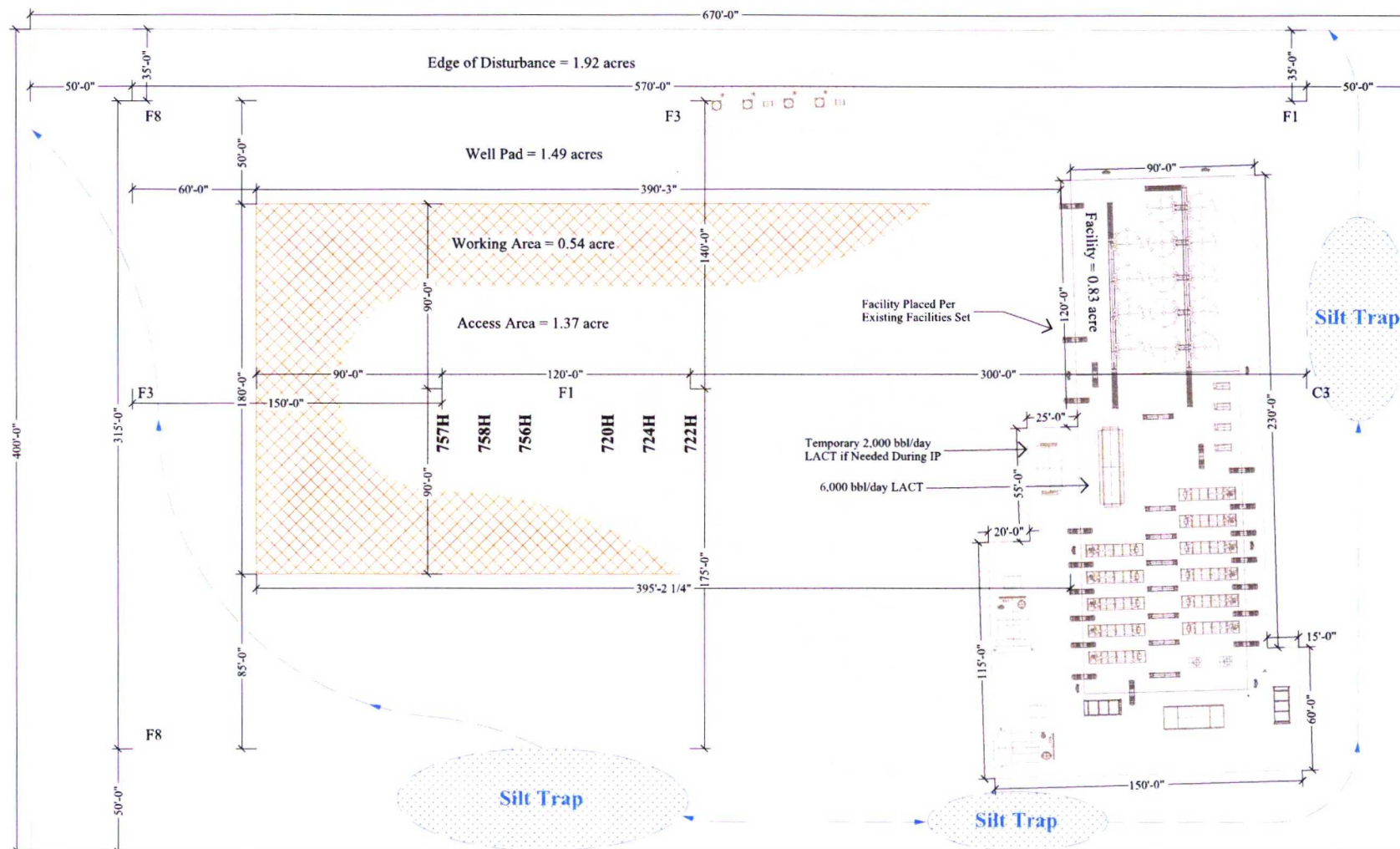
Signature and Seal of Professional Surveyor



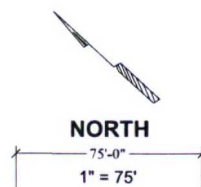
JASON C. EDWARDS

Certificate Number 15269

Enduring Resources IV, LLC's W Lybrook Unit 720H Well Pad Facility Diagram **Section 23, T23N, R9W, NMPM San Juan County, New Mexico**



- 1) Long Term Disturbance = 2.20 acre
 - a. Facilities = 0.83 acre
 - b. Access Road = 1.37 acre
 - 2) Reseed Area Only = 0.54 acre
 - a. Working Area Excluding Road = 0.54acre
 - 3) Reseed & Recontour Area = 3.41 acres
 - a. Well Pad = 1.49 acres
 - b. Edge of Disturbance = 1.92 acres
- Total Disturbance Area = 6.15 acres**



The W Lybrook Unit 720H well pad hosts facilities for the W Lybrook Unit 768H well pad.
 The below listed wells are served by shown facility.

W Lybrook Unit Number NMNM135216A

W Lybrook Unit 720H 2,587' FSL & 2,062' FEL API # 30-045-35818 Lease # NMNM135216A	W Lybrook Unit 724H 2,571' FSL & 2,049' FEL API # 30-045-35811 Lease # NMNM135216A	W Lybrook Unit 757H 2,626' FNL & 2,113' FEL API # 30-045-35807 Lease # NMNM135216A	W Lybrook Unit 768H 1846' FNL & 749' FEL API # 30-045-35891 Lease # NOG13121862	W Lybrook Unit 770H 1829' FNL & 759' FEL API # 30-045-35893 Lease # NOG13121862
W Lybrook Unit 722H 2,556' FSL & 2,037' FEL API # 30-045-35779 Lease # NMNM135216A	W Lybrook Unit 756H 2,618' FSL & 2,088' FEL API # 30-045-35819 Lease # NMNM135216A	W Lybrook Unit 758H 2,633' FSL & 2,101' FEL API # 30-045-35810 Lease # NMNM135216A	W Lybrook Unit 769H 1881' FNL & 730' FEL API # 30-043-35892 Lease # NOG13121862	W Lybrook Unit 771H 1864' FNL & 740' FEL API # 30-045-35894 Lease # NOG13121862

Lacey Granillo

From: Andrea Felix
Sent: Wednesday, July 31, 2019 12:33 PM
To: Lacey Granillo
Cc: Casey Haga; Heather Huntington; David Rogers; Robert Winkler; April Pohl; Mitch Morris; Makena Burris
Subject: Re: CORRECTED* W LYBROOK UNIT 768H PAD & W LYBROOK UNIT 720H PAD C106 Letter from Transporter

Lacey,

Enduring approves utilizing the LACT as described below.

Thank you,

Andrea Felix
Enduring Resources
Regulatory Manager

Sent from my iPhone

On Jul 31, 2019, at 10:29 AM, Lacey Granillo <LGranillo@enduringresources.com> wrote:

Andrea,

As part of Enduring Resources IV, LLC's (Enduring) W LYBROOK UNIT 768H PAD & W LYBROOK UNIT 720H PAD Pipeline Transfer LACT Unit C-106 LACT application to the NMOCD Aztec office, Enduring needs an approved letter from transporter. For this particular LACT unit, Enduring will be the transporter of product downstream of the LACT unit to an existing tie-in to Whiptail. This LACT Unit will be the official measurement point for sales with a Coriolis check meter downstream at tie-in for verification and pipeline monitoring. Does Enduring approve of utilizing a LACT unit on the W LYBROOK UNIT 720H PAD as the measurement point for sales for the below listed wells and transporting their own product downstream to tie-in? Pipeline Transfer LACT equipment for the below listed wells will be located on Enduring's W LYBROOK UNIT 720H PAD. LACT will be proved per regulatory requirements.

WELLS TO BE SERVED BY PIPELINE LACT UNIT:

- W LYBROOK UNIT 768H/ API # 30-045-35891/ UNIT H Sec. 23, T23N, R9W, NMPM
- W LYBROOK UNIT 769H/ API # 30-045-35892/ UNIT H Sec. 23, T23N, R9W, NMPM
- W LYBROOK UNIT 770H / API # 30-045-35893 / UNIT H Sec. 23, T23N, R9W, NMPM
- W LYBROOK UNIT 771H/ API # 30-045-35894/ UNIT H Sec. 23, T23N, R9W, NMPM

- **W LYBROOK UNIT 720H/ API # 30-045-35818/ UNIT J Sec. 23, T23N, R9W, NMPM**
- **W LYBROOK UNIT 722H/ API # 30-045-35779/ UNIT J Sec. 23, T23N, R9W, NMPM**
- **W LYBROOK UNIT 724H/ API # 30-045-35811/ UNIT J Sec. 23, T23N, R9W, NMPM**
- **W LYBROOK UNIT 756H/ API # 30-045-35819/ UNIT J Sec. 23, T23N, R9W, NMPM**
- **W LYBROOK UNIT 757H/ API # 30-045-35807/ UNIT J Sec. 23, T23N, R9W, NMPM**
- **W LYBROOK UNIT 758H/ API # 30-045-35810/ UNIT J Sec. 23, T23N, R9W, NMPM**

Lacey Granillo

Permitting Specialist

Enduring Resources

200 Energy Ct

Farmington NM 87401

(O) 505-636-9743

(C) 505-947-1704

lgranillo@enduringresources.com

<image003.jpg>