

District I  
1625 N. French Dr., Hobbs, NM 88240  
District II  
1301 W. Grand Avenue, Artesia, NM 88210  
District III  
1000 Rio Brazos Road, Aztec, NM 87410  
District IV  
1220 S. St. Francis Dr., Santa Fe, NM 87505

State of New Mexico  
Energy Minerals and Natural Resources

Form C-101  
May 27, 2004

Oil Conservation Division  
1220 South St. Francis Dr.  
Santa Fe, NM 87505

Submit to appropriate District Office

☐ AMENDED REPORT

APPLICATION FOR PERMIT TO DRILL, RE-ENTER, DEEPEN, PLUGBACK, OR ADD A ZONE

<sup>1</sup> Operator Name and Address <b>McKay Oil and Gas LLC</b> <b>P. O. Box 14738, Albuquerque, NM 87191</b>		<sup>2</sup> OGRID Number <b>010715</b>
<sup>3</sup> Property Code <b>35680</b>	<sup>4</sup> Property Name <b>Red River</b>	<sup>5</sup> APL Number <b>30-045-33727</b>
<sup>9</sup> Proposed Pool 1 <b>71629 - Basin Fruitland Coal</b>		<sup>10</sup> Proposed Pool 2

<sup>7</sup> Surface Location

UL or lot no.	Section	Township	Range	Lot Idn	Feet from the	North/South line	Feet from the	East/West line	County
<b>P</b>	<b>2</b>	<b>30N</b>	<b>12W</b>		<b>1185</b>	<b>South</b>	<b>890</b>	<b>East</b>	<b>San Juan</b>

<sup>8</sup> Proposed Bottom Hole Location If Different From Surface

UL or lot no.	Section	Township	Range	Lot Idn	Feet from the	North/South line	Feet from the	East/West line	County

Additional Well Information

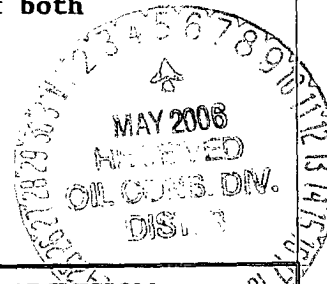
<sup>11</sup> Work Type Code <b>N</b>	<sup>12</sup> Well Type Code <b>G</b>	<sup>13</sup> Cable/Rotary <b>R</b>	<sup>14</sup> Lease Type Code <b>P</b>	<sup>15</sup> Ground Level Elevation <b>5719'</b>
<sup>16</sup> Multiple <b>No</b>	<sup>17</sup> Proposed Depth <b>2275'</b>	<sup>18</sup> Formation <b>Basin Fruitland Coal</b>	<sup>19</sup> Contractor <b>Unknown</b>	<sup>20</sup> Spud Date <b>As soon as permitted</b>
Depth to Groundwater <b>~50'</b>		Distance from nearest fresh water well <b>&gt; 1000'</b>		Distance from nearest surface water <b>~200' - 1000'</b>
Pit: Liner: Synthetic <input checked="" type="checkbox"/> <b>12</b> mils thick Clay <input type="checkbox"/> Pit Volume: <b>2700</b> bbls Drilling Method: Fresh Water <input checked="" type="checkbox"/> Brine <input type="checkbox"/> Diesel/Oil-based <input type="checkbox"/> Gas/Air <input type="checkbox"/>				
Closed-Loop System <input type="checkbox"/>				

<sup>21</sup> Proposed Casing and Cement Program

Hole Size	Casing Size	Casing weight/foot	Setting Depth	Sacks of Cement	Estimated TOC
<b>8 3/4"</b>	<b>7"</b>	<b>20#</b>	<b>120'</b>	<b>50sx(59cf) B</b>	<b>Surface</b>
<b>6 1/4"</b>	<b>4 1/2"</b>	<b>10.5#</b>	<b>2275'</b>	<b>300sx(530cf) B</b>	<b>Surface</b>

<sup>22</sup> Describe the proposed program. If this application is to DEEPEN or PLUG BACK, give the data on the present productive zone and proposed new productive zone. Describe the blowout prevention program, if any. Use additional sheets if necessary.

**A 2000 psi blowout prevention system will be used, consisting of both blind and pipe rams.**



<sup>23</sup> I hereby certify that the information given above is true and complete to the best of my knowledge and belief. I further certify that the drilling pit will be constructed according to NMOCD guidelines ☒ a general permit ☐, or an (attached) alternative OCD-approved plan ☐.

Printed name: **Dana L. Delventhal**

Title: **Agent**

E-mail Address: **ddelventhal@qwest.net**

Date: **05/03/06**

Phone: **(505)326-4125**

OIL CONSERVATION DIVISION

Approved by:

Title:

Approval Date: **MAY 05 2006** Expiration Date: **MAY 05 2007**

Conditions of Approval Attached ☐

DISTRICT I  
1625 N. French Dr., Hobbs, N.M. 88240

DISTRICT II  
1301 W. Grand Ave., Artesia, N.M. 88210

DISTRICT III  
1000 Rio Brazos Rd., Aztec, N.M. 87410

DISTRICT IV  
1220 South St. Francis Dr., Santa Fe, NM 87505

State of New Mexico  
Energy, Minerals & Natural Resources Department

OIL CONSERVATION DIVISION

1220 South St. Francis Dr.  
Santa Fe, NM 87505

Form C-102

Revised October 12, 2005

Submit to Appropriate District Office

State Lease - 4 Copies

Fee Lease - 3 Copies

☐ AMENDED REPORT

WELL LOCATION AND ACREAGE DEDICATION PLAT

<sup>1</sup> API Number <b>30-045-33727</b>	<sup>2</sup> Pool Code <b>71629</b>	<sup>3</sup> Pool Name <b>Basin Fruitland Coal</b>
<sup>4</sup> Property Code <b>35680</b>	<sup>5</sup> Property Name <b>RED RIVER</b>	<sup>6</sup> Well Number <b>1</b>
<sup>7</sup> GRID No. <b>010715</b>	<sup>8</sup> Operator Name <b>MCKAY OIL AND GAS LLC</b>	<sup>9</sup> Elevation <b>5719</b>

<sup>10</sup> Surface Location

UL or lot no. <b>P</b>	Section <b>2</b>	Township <b>30-N</b>	Range <b>12-W</b>	Lot Idn	Feet from the <b>1185</b>	North/South line <b>SOUTH</b>	Feet from the <b>890</b>	East/West line <b>EAST</b>	County <b>SAN JUAN</b>
---------------------------	---------------------	-------------------------	----------------------	---------	------------------------------	----------------------------------	-----------------------------	-------------------------------	---------------------------

<sup>11</sup> Bottom Hole Location If Different From Surface

UL or lot no.	Section	Township	Range	Lot Idn	Feet from the	North/South line	Feet from the	East/West line	County
<sup>12</sup> Dedicated Acres <b>320</b>	<sup>13</sup> Joint or Infill <b>J</b>	<sup>14</sup> Consolidation Code <b>C</b>	<sup>15</sup> Order No.						

NO ALLOWABLE WILL BE ASSIGNED TO THIS COMPLETION UNTIL ALL INTERESTS HAVE BEEN CONSOLIDATED  
OR A NON-STANDARD UNIT HAS BEEN APPROVED BY THE DIVISION

16

LOT 4	LOT 3	LOT 6 39.53 <b>NMSF</b>	LOT 5 39.55 <b>077482</b>
		LOT 7 39.87	LOT 8 39.92 <b>FD 3 1/4" BC 1976 BLM</b>
		<b>Fee</b>	<b>N 01°57'30" W 2634.90' (M)</b>
	<b>LAT: 36.3724° N. (NAD 83) LONG: 108.6157° W. (NAD 83)</b>	<b>S 89°10'04" W 2636.10' (M)</b>	<b>1185'</b> <b>FD 3 1/4" BC 1975 BLM</b>

17 OPERATOR CERTIFICATION

I hereby certify that the information contained herein is true and complete to the best of my knowledge and belief, and that this organization either owns a working interest or unleased mineral interest in the land including the proposed bottom hole location or has a right to drill this well at this location pursuant to a contract with an owner of such a mineral or working interest, or to a voluntary pooling agreement or a compulsory pooling order heretofore entered by the division.

*Dana L. Delventhal*

Signature **5/3/06**  
Date

**Dana L. Delventhal**  
Printed Name

18 SURVEYOR CERTIFICATION

I hereby certify that the well location shown on this plat was plotted from field notes of actual surveys made by me or under my supervision, and that the same is true and correct to the best of my belief.

**MARCH 2006**  
Date of Survey  
Signature and Seal of Registered Professional Surveyor:

**JOHN A. WUKONICH**  
**NEW MEXICO**  
**REGISTERED PROFESSIONAL SURVEYOR**  
**14831**

Certificate Number

108.08333° W

108.06667° W

WGS84 108.05000° W

**McKAY OIL AND GAS LLC**

**RED RIVER No. 1**

**1185 FSL 890 FEL**

**SEC. 2, T-30-N, R-12-W, N.M.P.M.**

**SAN JUAN COUNTY, NEW MEXICO**

**RED RIVER No. 1**

**LAT: 36.83724 N (NAD 83)**

**LONG: 108.06157 W (NAD 83)**

**NO NEW ACCESS**

36.85000° N

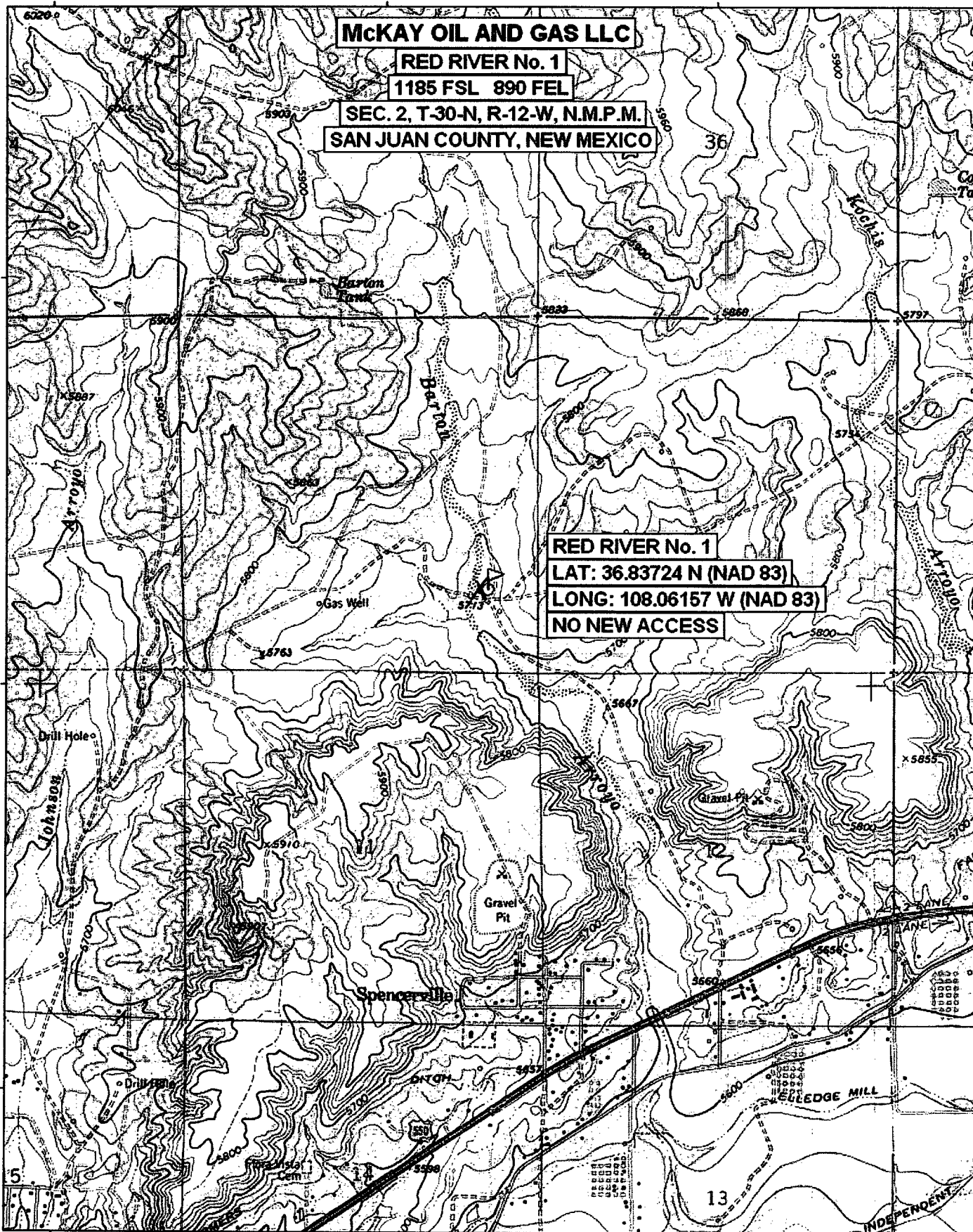
36.85000° N

36.83333° N

36.83333° N

36.81667° N

36.81667° N

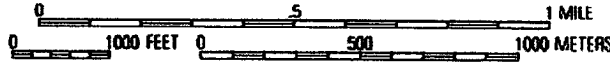


108.08333° W

108.06667° W

WGS84 108.05000° W

TN/MN  
11°



Map created with TOPO!® ©2002 National Geographic ([www.nationalgeographic.com/topo](http://www.nationalgeographic.com/topo))