

UNITED STATES  
DEPARTMENT OF THE INTERIOR  
BUREAU OF LAND MANAGEMENT

FORM APPROVED  
OMB NO. 1004-0137  
Expires: January 31, 2018

**SUNDRY NOTICES AND REPORTS ON WELLS**  
*Do not use this form for proposals to drill or to re-enter an abandoned well. Use form 3160-3 (APD) for such proposals.*

5. Lease Serial No.  
NMNM28737

6. If Indian, Allottee or Tribe Name

**SUBMIT IN TRIPLICATE - Other instructions on page 2**

7. If Unit or CA/Agreement, Name and/or No.

1. Type of Well

☒ Oil Well ☐ Gas Well ☐ Other

8. Well Name and No.  
YARBOROUGH FEDERAL B 1

2. Name of Operator  
ENDURING RESOURCES LLC

Contact: LACEY GRANILLO  
E-Mail: lgranillo@enduringresources.com

9. API Well No.  
30-039-05127-00-S1

3a. Address  
1050 17TH STREET SUITE 2500  
DENVER, CO 80265

3b. Phone No. (include area code)  
Ph: 505.636.9743

10. Field and Pool or Exploratory Area  
COUNSELORS

4. Location of Well (Footage, Sec., T., R., M., or Survey Description)

Sec 10 T23N R6W NWNW 0660FNL 0530FWL  
36.244522 N Lat, 107.463455 W Lon

11. County or Parish, State  
RIO ARRIBA COUNTY, NM

**12. CHECK THE APPROPRIATE BOX(ES) TO INDICATE NATURE OF NOTICE, REPORT, OR OTHER DATA**

TYPE OF SUBMISSION	TYPE OF ACTION			
<input type="checkbox"/> Notice of Intent	<input type="checkbox"/> Acidize	<input type="checkbox"/> Deepen	<input type="checkbox"/> Production (Start/Resume)	<input type="checkbox"/> Water Shut-Off
<input checked="" type="checkbox"/> Subsequent Report	<input type="checkbox"/> Alter Casing	<input type="checkbox"/> Hydraulic Fracturing	<input type="checkbox"/> Reclamation	<input type="checkbox"/> Well Integrity
<input type="checkbox"/> Final Abandonment Notice	<input type="checkbox"/> Casing Repair	<input type="checkbox"/> New Construction	<input type="checkbox"/> Recomplete	<input type="checkbox"/> Other
	<input type="checkbox"/> Change Plans	<input checked="" type="checkbox"/> Plug and Abandon	<input type="checkbox"/> Temporarily Abandon	
	<input type="checkbox"/> Convert to Injection	<input type="checkbox"/> Plug Back	<input type="checkbox"/> Water Disposal	

13. Describe Proposed or Completed Operation: Clearly state all pertinent details, including estimated starting date of any proposed work and approximate duration thereof. If the proposal is to deepen directionally or recompleat horizontally, give subsurface locations and measured and true vertical depths of all pertinent markers and zones. Attach the Bond under which the work will be performed or provide the Bond No. on file with BLM/BIA. Required subsequent reports must be filed within 30 days following completion of the involved operations. If the operation results in a multiple completion or recompleat in a new interval, a Form 3160-4 must be filed once testing has been completed. Final Abandonment Notices must be filed only after all requirements, including reclamation, have been completed and the operator has determined that the site is ready for final inspection.

This well was plugged and abandoned on 12/17/19.  
See attached wellbore diagram and daily reports.

**NMOC**

**DEC 26 2019**

**DISTRICT III**

14. I hereby certify that the foregoing is true and correct.

**Electronic Submission #496788 verified by the BLM Well Information System  
For ENDURING RESOURCES LLC, sent to the Farmington  
Committed to AFMSS for processing by JOE KILLINS on 12/26/2019 (20JK0075SE)**

Name (Printed/Typed) LACEY GRANILLO

Title PERMITTING SPECIALIST

Signature (Electronic Submission)

Date 12/20/2019

**THIS SPACE FOR FEDERAL OR STATE OFFICE USE**

Approved By **ACCEPTED**

JOE KILLINS  
Title ENGINEER

Date 12/26/2019

Conditions of approval, if any, are attached. Approval of this notice does not warrant or certify that the applicant holds legal or equitable title to those rights in the subject lease which would entitle the applicant to conduct operations thereon.

Office Farmington

Title 18 U.S.C. Section 1001 and Title 43 U.S.C. Section 1212, make it a crime for any person knowingly and willfully to make to any department or agency of the United States any false, fictitious or fraudulent statements or representations as to any matter within its jurisdiction.

(Instructions on page 2)

**\*\* BLM REVISED \*\* BLM REVISED \*\* BLM REVISED \*\* BLM REVISED \*\* BLM REVISED \*\***

**NMOC**

**Yarborough Federal B 001- 30-039-05127**

**P&A Daily report**

This well was plugged and abandoned on 12/17/19.

12/2/19 MIRU

12/3/19 TOH PICK UP CEMENT RETAINER AND TIH, SET RETAINER AT 5150' TO ISOLATE GALLUP FORMATION, LOAD HOLE AND CIRCULATE. RUN CBL FROM 5150' TO SURFACE, { NOTE, CBL SHOWS TOP OF CEMENT AROUND 4000' } EMAIL LOGS TO EVERYONE AS REQUESTED AND WILL SEE IF ANY CHANGES ARE MADE, RD/WL/TRK, TIH WITH 10/STANDS, TOH AND SHUT IN WELL, SDFN. { NEXT 24/HR. OPS PLAN, TIH OPEN ENDED AND PUMP 1ST/PLUG THEN WOC, TAG CEMENT THEN PUMP # 2 PLUG, PULL UP AND WOC, THEN PROCEED AFTER VISITING WITH BLM AND NMOC. } { ALL OPERATIONS WERE WITNESSED BY CLAY YAZZIE WITH BLM. }

12/4/19 thru 12/9/19 TP/NA CP/O BH/O, TIH. ALL OPERATIONS WITNESSED BY CLAY YAZZIE WITH BLM.

12/10/19 thru 12/16/19 TP/NA CP/O BH/O, TIH TAG TOP OF CEMENT AT 4007'. { WITNESSED BY CLAY YAZZIE WITH BLM. } TOH RU/WL/TRK, RIH SHOOT 3/HOLES AT 3586', POH AND PICK UP RETAINER # 2 FOR PLUG 3, { NOTE, DID NOT TRY TO ESTABLISH RATE DUE TO BAD CASING. RIH AND PUMP 10/BBLS THROUGH RETAINER BEFORE SETTING, SET RETAINER AND ESTABLISH RATE, { PUMPING INTO HOLES AT 1.25/BPM AT 250/PSI THEN HIT 750/PSI AND DROPPED BACK, WE HAD COMMUNICATION DUE TO BAD PIPE, WAS GOING TO DO SUICIDE SQUEEZE, MIX CEMENT AND TRIED TO PUMP AND TBG. PRESSURED UP TO 1000/PSI, WORKED STINGER IN/OUT OF RETAINER, STINGER WAS PLUGGED, PULL OUT AND REVERSED OUT TOOK 1000/PSI AND HAD CIRCULATION, HAD ALOT OF SHALE AND CEMENT IN RETURNS, CIRCULATED 80/BBLS. HOLE VOLUME AND CLEANED UP, STING BACK INTO RETAINER, HAD TROUBLE WITH FILL IN TOP, REVERSED ANOTHER 30/BBLS. RETURNS CLEAN, STING IN AND WAS ONLY GETTING LESS THEN 1/4 BPM AT 1000/PSI AND HAD COMMUNICATION OR BYPASSING AROUND STINGER SEAL. WELL SEEMS TO BE DUMPING SHALE FROM BAD CASING, { CALLED BLM AND NMOC D SPOKE WITH JOE KILLINS AND BRANDON POWELL, NEW PLAN, LEAVE RETAINER AND SHOOT HOLES ON TOP AND SET ANOTHER RETAINER 30' ABOVE. } PULL UP ABOVE BAD CASING AT 1850' AND SHUT IN WELL. { EVERYTHING WITNESSED BY CLAY YAZZIE WITH BLM. }

TP/O CP/O BH/O, TIH TAG TOP OF CEMENT AT 3178' { READJUST AFTER TAGGING UP AT 3178' TOTAL OF 34/SKS, 6.8/BBLS SLURRY BEHIND PIPE TO COVER 3311' TO 3531' AND 42/SKS 8.6/BBLS SLURRY INSIDE PIPE TO COVER 3178' TO 3531' } TOP NEEDED TO BE ABOVE 3336' { WITNESSED BY CLAY YAZZIE, } REVERSE OUT TO CHECK FOR SHALE, HAD 1/BBL LITE SLURRY AND 3/BBLS DRILLING MUD AND SHALE, STILL GETTING SLUFF OFF, CIRCULATE CLEAN 70/BBLS. TOH, DO PRESSURE TEST TO CHECK FOR INJECTION RATE { 500/PSI START, 2MIN/450 4MIN/400 5MIN/360/PSI } UNABLE TO GET ANY RATE. { CLAY YAZZIE AND JOHN HOFFMAN WITH BLM, BRANDON POWELL WITH NMOC D APPROVED A BALANCED PLUG AND BULLHEAD CEMENT DUE TO BAD CASING INSTEAD OF RETAINER FOR PLUG 4 } PUMP 5/BBLS FRESH WATER PREFLUSH, 20/SKS CLASS G 1.15/YIELD 5/GPS 15.8/PPG TOTAL 4/BBLS SLURRY SQUEEZED TO COVER 2717' TO 2847' OUTSIDE PIPE, STAGE # 2 34/SKS CLASS G 1.15/YIELD 5/GPS 15.8/PPG TOTAL 7/BBLS SLURRY TO COVER 2560' TO 2847' INSIDE PIPE AND DISPLACE WITH 9.2/BBLS FRESH WATER TO 2560' } { NOTE, AFTER DISPLACEMENT WE SQUEEZED 4/BBLS SLURRY BEHIND PIPE WITH MAX PRESSURE OF 800/PSI. SDFN }

TP/O CP/O BH/O, TIH TAG TOP OF CEMENT AT 2580' { READJUST AFTER TAGGING UP AT 2580' TOTAL OF 22/SKS, 4.5/BBLS SLURRY BEHIND PIPE TO COVER 2702' TO 2845' AND 32/SKS 6.5/BBLS SLURRY INSIDE PIPE TO COVER 2580' TO 2847' } TOP NEEDED TO BE ABOVE 2600' { WITNESSED BY CLAY YAZZIE, WITH BLM. } REVERSE OUT 40/BBLS. ON TOP OF PLUG AT 2580' HAD SOME MUD AND SOLIDS IN THE FIRST 20/BBLS THEN CLEANED UP, PRESSURE TESTED CASING, { 500/PSI. DROPPED OFF TO 50/PSI IN LESS THEN 5/MINS. MUST OF OPENED BAD SPOT WHEN SQUEEZING PLUG 4 } DISCUSSED NEXT PLUGS WITH NMOC D AND BLM, GOT APPROVAL TO COMBINE THE FRUITLAND AND PICTURED CLIFFS. { CLAY YAZZIE AND JOHN HOFFMAN WITH BLM, BRANDON POWELL WITH NMOC D APPROVED A BALANCED PLUG AND BULLHEAD CEMENT DUE TO BAD CASING INSTEAD OF RETAINER FOR PLUG 5 } TOH RU/WL/TRK AND SHOOT 2/SETS SQUEEZE HOLES 1884' AND 2067' 3/SPF ON EACH, RD/WL/TRK AND LOAD TEST HOLES, PUMP INTO HOLES .7/BPM AT 350/PSI. TIH EOT AT 2067' { PUMP PLUG #5 TO COVER PICTURES CLIFF AND CLIFF HOUSE FROM 1700' TO 2067', PULL UP TO 628' AND SQUEEZE AWAY 4/BBLS SLURRY AT 1/4 BPM AT 350/PSI AND SHUT IN WELL } { NOTE, EVERYTHING WITNESSED BY CLAY YAZZIE WITH BLM TODAY. } SECURED WELL AND SDSW

TP/O CP/O BH/O TIH TAG TOP OF CEMENT ON PLUG # 5 NEEDS TO BE ABOVE 1785' { TAGGED UP AT 1766' PLUG 5 GOOD, WITNESSED BY CLAY YAZZIE WITH BLM. } LAY DOWN 4/JNTS. PERFORM PRESSURE TEST 1766' TO SURFACE, { 850/PSI. HELD FOR 10/MINS. GOOD TEST, WITNESSED BY CLAY YAZZIE WITH BLM. } TOH AND RU/WL/TRK TO SHOOT HOLES AT 1665' TO COVER THE KIRTLAND AND OJO ALAMO FROM 1665' TO 1355', RD/WL/TRK, LOAD/TEST INJECTION RATE, { .7/BPM @670/PSI PUMPED TOTAL 6/BBLS. FINAL RATE 1./BPM @790/PSI. } TIH SET RETAINER FOR PLUG #6 AT 1609', { PUMP PLUG # 6 TO COVER KIRTLAND AND OJO ALAMO FROM 1666' TO 1300' INSIDE/OUTSIDE PIPE, { STAGE # 1 AND STAGE #2 START JOB, PUMP 5/BBLS. FRESH WATER PREFLUSH, MIX/PUMP 55/SKS CLASS G 1.15/YIELD 5/GPS 15.8/PPG TOTAL 11.25/BBLS SLURRY TO COVER 1666' TO 1300' OUTSIDE PIPE, STAGE #3 PUMP 5.5/SKS CLASS G 1.15/YIELD 5/GPS 15.8/PPG TOTAL 1.14/BBLS SLURRY TO COVER 1609' TO 1666' INSIDE PIPE BELOW RETAINER, STAGE #3 PUMP 31/SKS CLASS G 1.15/YIELD 5/GPS 15.8/PPG TOTAL 6.3/BBLS SLURRY TO COVER 1300' TO 1607' INSIDE PIPE AND DISPLACE WITH 5.25/BBLS FRESH TO 1300' INSIDE TBG. } SD/PUMP LAY DOWN TBG. RU/WL/TRK AND SHOOT HOLES AT 336' RD/WL/TRK AND LOAD HOLE ESTABLISH RATE, HAD RETURNS AFTER 6/BBLS. PUMPED TOTAL 15/BBLS, { START PLUG #7 SURFACE PLUG TO COVER 336' TO SURFACE INSIDE AND OUTSIDE PIPE, STAGE #1 PUMP 5/BBLS PREFLUSH FRESH WATER, MIX/PUMP 85/SKS CLASS G 1.15/YIELD 5/GPS 15.8# TOTAL 17.40/BBLS SLURRY TO COVER 336' TO SURFACE OUTSIDE PIPE, STAGE #2 MIX/PUMP 40/SKS CLASS G 1.15/YIELD 5/GPS 15.8# TOTAL 8.2/BBLS SLURRY TO COVER 336' TO SURFACE INSIDE PIPE, }

{ MIXED TOTAL OF 150/SKS CLASS G 1.15/YIELD 5/GPS 15.8/PPG TOTAL OF 25.6/BBLS. HAD FULL RETURNS AND CIRCULATED BACK 25/SKS TOTAL 5/BBLS SLURRY OUT BRADENHEAD. } SD/PUMP AND SHUT IN WELL OVERNIGHT AND WILL TOP OFF IN MORNING IF NEEDED. SDFN. { NEXT 24/HR. OPS PLAN, TOP OFF CEMENT IF NEEDED AND CUTOFF WELLHEAD AND INSTALL MARKER, RIG DOWN AND RELEASE RIG. }

12/17/19 TP/O CP/O BH/O TOP OF CEMENT 13' FROM SURFACE INSIDE PIPE, DID CUTOFF AND CHECKED CEMENT IN SURFACE, AFTER CUTOFF TAGGED CEMENT 9' FROM SURFACE INSIDE AND 3' FROM SURFACE OUTSIDE, LOADED BOTH SIDES WITH CEMENT AND MONITORED FOR ANY DROP IN CEMENT, DID NOT HAVE ANY DROP, { CALLED GOOD BY BLM INSPECTOR CLAY YAZZIE. } WELDED ON ABOVE GROUND. RDMO

**Plug Summary:**

**Plug #1 - 4998' to 5148' Gallup, 19 sx Class G w/ 2% Calcium**

**Plug #2 - 4006' to 4566' Point Lookout, 68 sx class G**

**Plug #3 - 3178' to 3531' Cliff House and Mesa Verde, 76 sx Class G**

**Plug #4 - 2580' to 2847' Chacra, 54 sx Class G**

**Plug #5 - 1766' to 2067' PC and Fruitland, 70 sx Class G**

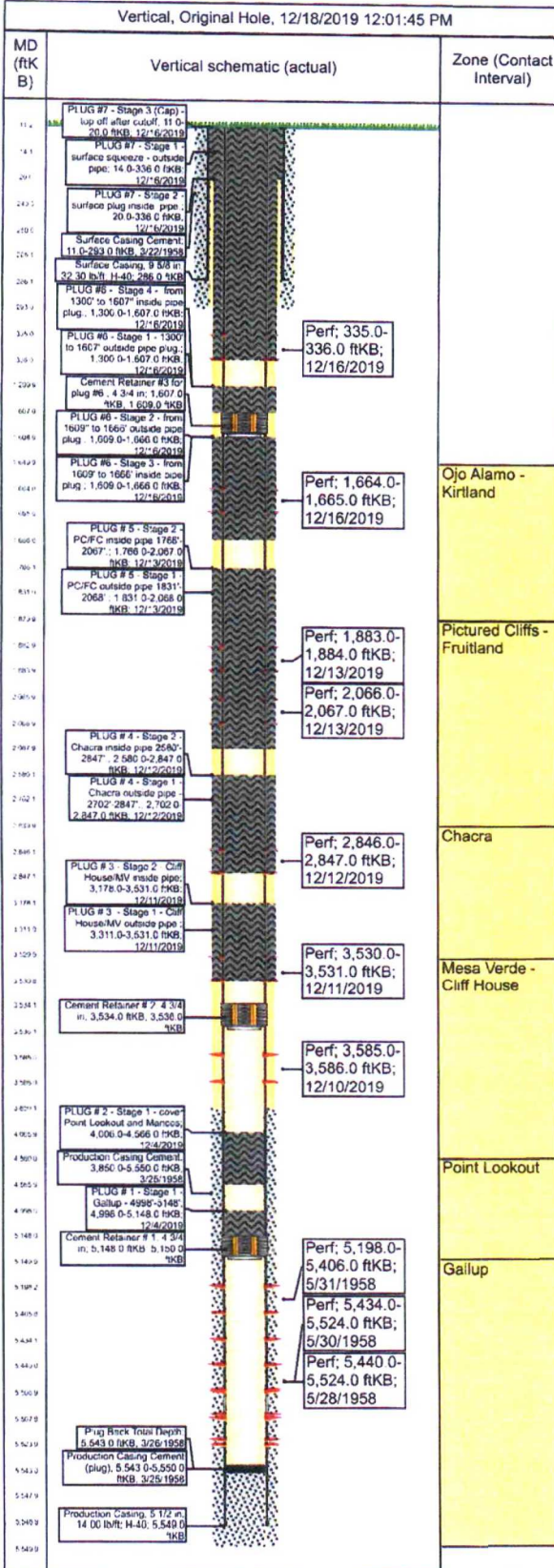
**Plug #6 - 1300' to 1666' Kirtland and Ojo Alamo, 91.5 sx (11.25 bbl) Class G**

**Plug #7 - Surface to 336', 200 sx Class G**



Well Name: YARBOROUGH FEDERAL B 1

API/UWI 30-039-05127	Surface Legal Location (Unit D) NW/4, NW/4, Section 10, Twp 23	Field Name Counselors Gallup-Dakota	License #	State/Province NEW MEXICO	Well Configuration Type Vertical
Original KB Elevation (ft) 6,741.00	KB-Tubing Head Distance (ft)	Spud Date 3/22/1958 00:00	Rig Release Date 6/5/1958 18:00	PBTD (Alt) (ftKB) Original Hole - 5,543.0	Total Depth All (TVD) (ftKB)



### Well Status History

Date	Well Status	Well Sub-Status
------	-------------	-----------------

### Wellhead Assembly (Current Configuration)

Type	Start Date
------	------------

### Casing Strings

Csg Des	OD (in)	W/Len (lb/ft)	Grade	Top Thread	Set Depth (ftKB)
Surface Casing	9 5/8	32.30	H-40		286.0
Production Casing	5 1/2	14.00	H-40		5,549.0

### Perforations

Date	Top (ftKB)	Btm (ftKB)	Linked Zone	Cur Stat Date	Current Status
12/16/2019	335.0	336.0			
12/16/2019	1,664.0	1,665.0	Ojo Alamo - Kirtland, Original Hole		
12/13/2019	1,883.0	1,884.0	Pictured Cliffs - Fruitland, Original Hole		
12/13/2019	2,066.0	2,067.0	Pictured Cliffs - Fruitland, Original Hole		
12/12/2019	2,846.0	2,847.0	Chacra, Original Hole		
12/11/2019	3,530.0	3,531.0	Mesa Verde - Cliff House, Original Hole		
12/10/2019	3,585.0	3,586.0	Mesa Verde - Cliff House, Original Hole		
5/31/1958	5,198.0	5,406.0	Gallup, Original Hole		
5/30/1958	5,434.0	5,524.0	Gallup, Original Hole		
5/28/1958	5,440.0	5,524.0	Gallup, Original Hole		

### Other In Hole

Des	OD (in)	Top (ftKB)	Btm (ftKB)	Run Date
Cement Retainer # 1	4 3/4	5,148.0	5,150.0	12/3/2019
Cement Retainer # 2	4 3/4	3,534.0	3,536.0	12/10/2019
Cement Retainer #3 for plug #6	4 3/4	1,607.0	1,609.0	12/16/2019

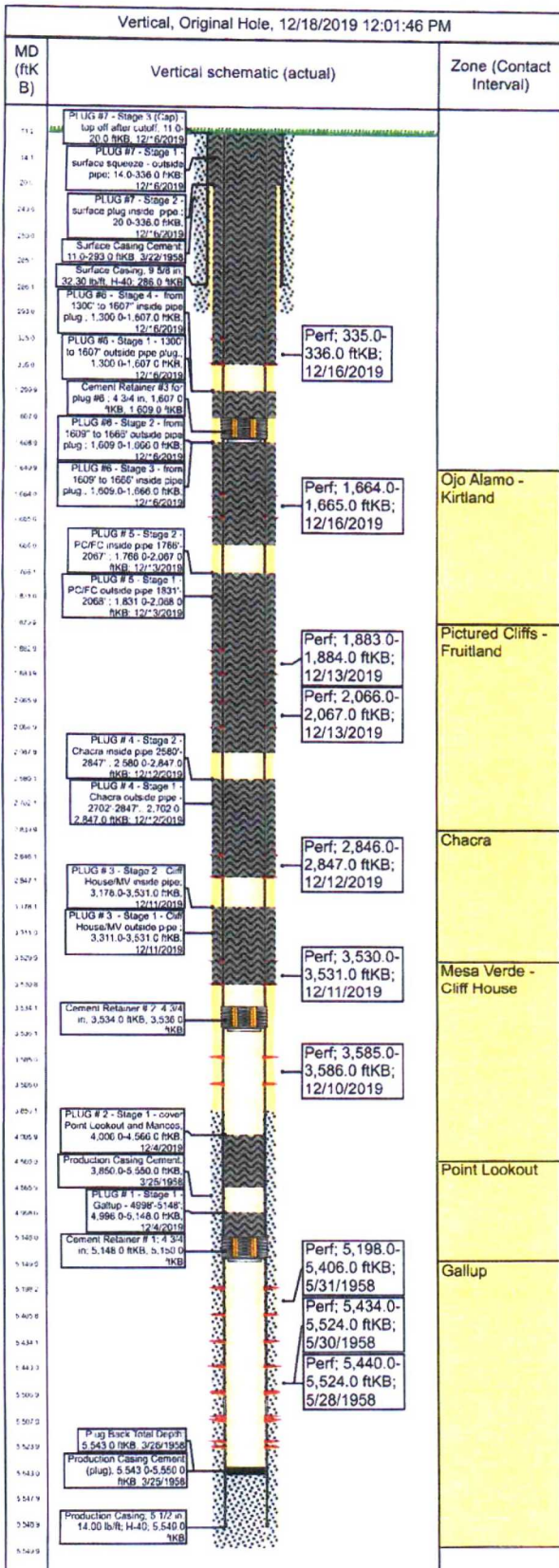
### Cement Plugs

Des	Type	Start Date	Stg #	Btm (ftKB)	Top (ftKB)
Cement Plug # 3 - Cliff House and Mesaverde - 3178'-3531'	Plug - Balanced	12/11/2019	1	3,531.0	3,311.0
Cement Plug # 3 - Cliff House and Mesaverde - 3178'-3531'	Plug - Balanced	12/11/2019	2	3,531.0	3,178.0
Cement Plug # 4 - Chacra - 2580'-2847'	Plug - Balanced	12/12/2019	1	2,847.0	2,702.0
Cement Plug # 4 - Chacra - 2580'-2847'	Plug - Balanced	12/12/2019	2	2,847.0	2,580.0
Cement Plug # 5 - Pictured Cliffs and Fruitland - 1766'-2067'	Plug - Balanced	12/13/2019	1	2,068.0	1,831.0
Cement Plug # 5 - Pictured Cliffs and Fruitland - 1766'-2067'	Plug - Balanced	12/13/2019	2	2,067.0	1,766.0
Cement plug #6 - Kirtland and Ojo Alamo - 1300'-1666'	Plug - Balanced	12/16/2019	1	1,607.0	1,300.0
Cement plug #6 - Kirtland and Ojo Alamo - 1300'-1666'	Plug - Balanced	12/16/2019	2	1,666.0	1,609.0
Cement plug #6 - Kirtland and Ojo Alamo - 1300'-1666'	Plug - Balanced	12/16/2019	3	1,666.0	1,609.0
Cement plug #6 - Kirtland and Ojo Alamo - 1300'-1666'	Plug - Balanced	12/16/2019	4	1,607.0	1,300.0
Cement plug #7 - Surface to 336'	Plug - Balanced	12/16/2019	1	336.0	14.0
Cement plug #7 - Surface to 336'	Plug - Balanced	12/16/2019	2	336.0	20.0
Cement plug #7 - Surface to 336'	Plug - Balanced	12/16/2019	3	20.0	11.0



Well Name: YARBOROUGH FEDERAL B 1

API/UWI 30-039-05127	Surface Legal Location (Unit D) NW/4, NW/4, Section 10, Twp 23	Field Name Counselors Gallup-Dakota	License #	State/Province NEW MEXICO	Well Configuration Type Vertical
Original KB Elevation (ft) 6,741.00	KB-Tubing Head Distance (ft)	Spud Date 3/22/1958 00:00	Rig Release Date 6/5/1958 18:00	PBTD (All) (ftKB) Original Hole - 5,543.0	Total Depth All (TVD) (ftKB)



Job Cat	Job Type	Start Date	End Date	AFE+Supp Amt (Cost)	Total Fid Est (Cost)	Var (AFE-Fid) (Cost)
Abandon	Abandon Well	12/2/2019	12/17/2019	69,380.00	94,415.00	-25,035.00