

UNITED STATES
DEPARTMENT OF THE INTERIOR
BUREAU OF LAND MANAGEMENT

APPLICATION FOR PERMIT TO DRILL, DEEPEN, OR PLUG BACK

1a. Type of Work DRILL	5. Lease Number NMSF-076958 Unit Reporting Number
1b. Type of Well GAS	6. If Indian, All. or Tribe
2. Operator BURLINGTON RESOURCES Oil & Gas Company, LP	7. Unit Agreement Name
3. Address & Phone No. of Operator PO Box 4289, Farmington, NM 87499 (505) 326-9700	8. Farm or Lease Name Hare 9. Well Number 14M
4. Location of Well Surf - Unit D(NWNW), 670' FNL, 935' FWL Bottomhole Unit D (NWNW), 800' FNL & 380' FWL Surface-Latitude 36° 44.7026'N Longitude 107° 52.6189'W Est. BH-Latitude 36° 44.7457'N Longitude 107° 52.7642'W	10. Field, Pool, Wildcat Basin DK / Blanco MV 11. Sec., Twn, Rge, Mer. (NMPM) Sec. 28, T10N, R11W 10 T29N, R10W API # 30-045-33566
14. Distance in Miles from Nearest Town	12. County San Juan 13. State NM
15. Distance from Proposed Location to Nearest Property or Lease Line 380'	17. Acres Assigned to Well MV/DK 318.64 acres W/2
16. Acres in Lease	
18. Distance from Proposed Location to Nearest Well, Drig, Compl, or Applied for on this Lease 621.4 ft from Hare 14A	
19. Proposed Depth 6765' TVD	20. Rotary or Cable Tools Rotary
21. Elevations (DF, FT, GR, Etc.) 5784' GL	22. Approx. Date Work will Start
23. Proposed Casing and Cementing Program See Operations Plan attached	
24. Authorized by: <u>Patsy Cluser</u> Sr. Regulatory Specialist	Date <u>1/30/06</u>

PERMIT NO. APPROVAL DATE
APPROVED BY D. Monkeez TITLE AFM DATE 6/6/08

Archaeological Report attached

Threatened and Endangered Species Report attached

NOTE: This format is issued in lieu of U.S. BLM Form 3160-3

Title 18 U.S.C. Section 1001, makes it a crime for any person knowingly and willfully to make to any department or agency of the United States any false, fictitious or fraudulent statements or presentations as to any matter within its jurisdiction.

DRILLING OPERATIONS AUTHORIZED ARE
SUBJECT TO COMPLIANCE WITH ATTACHED
"GENERAL REQUIREMENTS".

This action is subject to technical and
procedural review pursuant to 43 CFR
and appeal pursuant to 43 CFR 3165.4

NMOC

**UNITED STATES
DEPARTMENT OF THE INTERIOR
BUREAU OF LAND MANAGEMENT**

Sundry Notices and Reports on Wells

2006 APR 25 AM 9 59

RECEIVED
070 FARMINGTON NM

1. Type of Well
GAS

2. Name of Operator

BURLINGTON

RESOURCES OIL & GAS COMPANY LP

3. Address & Phone No. of Operator

PO Box 4289, Farmington, NM 87499 (505) 326-9700

4. Location of Well, Footage, Sec., T, R, M

Unit D (NWNW), 670' FNL & 935' FWL, Sec. 10 T29N, R10W, NMPM

5. Lease Number
NMSF-0769586. If Indian, All. or
Tribe Name

7. Unit Agreement Name

8. Well Name & Number

Hare #14M

9. API Well No.

33566
30-045-20107

10. Field and Pool

Basin DK & Blanco MV

11. County and State
San Juan Co., NM**12. CHECK APPROPRIATE BOX TO INDICATE NATURE OF NOTICE, REPORT, OTHER DATA**

Type of Submission

☒ Notice of Intent☐ Subsequent Report☐ Final Abandonment

Type of Action

☐ Abandonment☐ Recompletion☐ Plugging☐ Casing Repair☐ Altering Casing☒ Change of Plans☐ New Construction☐ Non-Routine Fracturing☐ Water Shut off☐ Conversion to Injection☒ Other - change of Ops Plan & Surface
Use Plan**13. Describe Proposed or Completed Operations**

The surface location of the subject well has moved and it will now be a vertical drilled well. We moved the location because the bottomhole location on the previous APD, showed to be NSL & would have had to been directionally drilled. Attached find the new plat, Operations Plan and Surface Use Plan for the new location and also an updated pit sundry. Also attached are the new pipeline connect plat and the arch report for the revised location.

14. I hereby certify that the foregoing is true and correct.

Signed

Patsy Clugston

Patsy Clugston

Title Sr. Regulatory Specialist

Date 4/24/06

(This space for Federal or State Office use)

APPROVED BY

Scott Hall

Title

Acting Branch Chief

Date

6/1/06

CONDITION OF APPROVAL, if any:

Title 18 U.S.C. Section 1001, makes it a crime for any person knowingly and willfully to make any department or agency of the United States any false, fictitious or fraudulent statements or representations as to any matter within its jurisdiction

✓

NMOCD

g

DISTRICT I
1625 N. French Dr., Hobbs, N.M. 88240

State of New Mexico
Energy, Minerals & Natural Resources Department

Form C-102
Revised August 15, 2000

DISTRICT II
811 South First, Artesia, N.M. 88210

Submit to Appropriate District Office
State Lease - 4 Copies
Fee Lease - 3 Copies

DISTRICT III
1000 Rio Brazos Rd., Aztec, N.M. 87410

OIL CONSERVATION DIVISION

2040 South Pacheco
Santa Fe, NM 87505

DISTRICT IV
2040 South Pacheco, Santa Fe, NM 87505

☒ AMENDED REPORT

WELL LOCATION AND ACREAGE DEDICATION PLAT

¹ API Number 30-045- 33566	² Pool Code 72319 / 71599	³ Pool Name Blanco Mesaverde / Basin Dakota
⁴ Property Code 7091	⁵ Property Name HARE	⁶ Well Number 14M
⁷ GRID No. 14538	⁸ Operator Name BURLINGTON RESOURCES OIL AND GAS COMPANY LP	⁹ Elevation 5813'

¹⁰ Surface Location

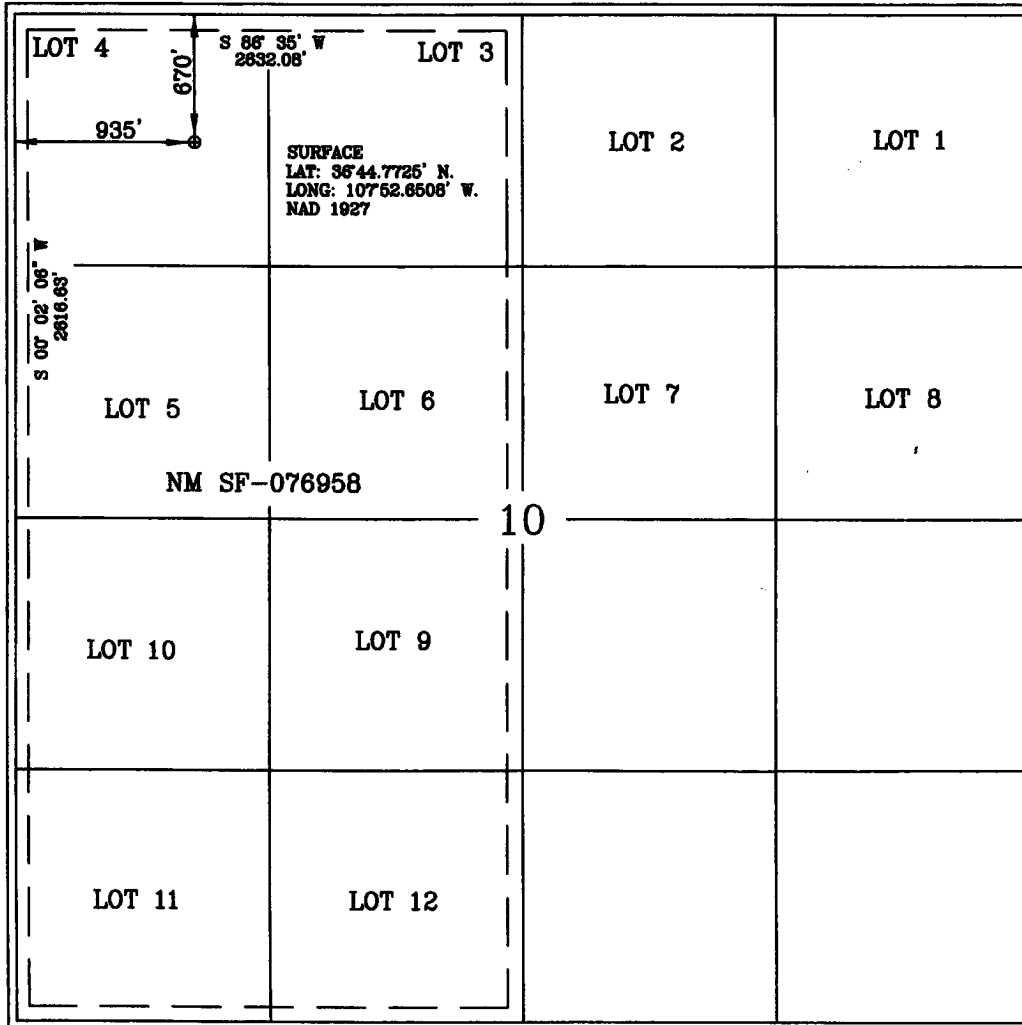
UL or lot no.	Section	Township	Range	Lot Idn	Feet from the	North/South line	Feet from the	East/West line	County
D	10	29-N	10-W		670'	NORTH	935'	WEST	SAN JUAN

¹¹ Bottom Hole Location If Different From Surface

UL or lot no.	Section	Township	Range	Lot Idn	Feet from the	North/South line	Feet from the	East/West line	County
D									
¹² Dedicated Acres MV/DK 318.64 W2			¹³ Joint or Infill		¹⁴ Consolidation Code		¹⁵ Order No.		

NO ALLOWABLE WILL BE ASSIGNED TO THIS COMPLETION UNTIL ALL INTERESTS HAVE BEEN CONSOLIDATED
OR A NON-STANDARD UNIT HAS BEEN APPROVED BY THE DIVISION

16



17 OPERATOR CERTIFICATION

I hereby certify that the information contained herein is true and complete to the best of my knowledge and belief.

Patsy Clugston
Signature

Patsy Clugston
Printed Name

Sr. Regulatory Specialist
Title

4/5/2006
Date

18 SURVEYOR CERTIFICATION

I hereby certify that the well location shown on this plat was plotted from field notes of actual surveys made by me or under my supervision, and that the same is true and correct to the best of my belief.

Date of Survey

Signature and Seal of Professional Surveyor

Certificate Number

15703

1625 N. French Dr., Hobbs, NM 88240

1301 W. Grand Ave., Artesia, NM 88210

1000 Rio Brazos Rd., Aztec, NM 87410

1220 S. St. Francis Dr., Santa Fe, NM 87505

State of New Mexico

Energy, Minerals and Natural Resources

May 27, 2004

OIL CONSERVATION DIVISION

1220 South St. Francis Dr.

Santa Fe, NM 87505

WELL API NO.

30-045-

335660

5. Indicate Type of Lease

STATE ☐FEE ☐

6. State Oil & Gas Lease No.

NMSF-076958

7. Lease Name or Unit Agreement Name

Hare

8. Well Number

14M

9. OGRID Number

14538

10. Pool name or Wildcat

Basin DK / Blanco MV

SUNDRY NOTICES AND REPORTS ON WELLS
(DO NOT USE THIS FORM FOR PROPOSALS TO DRILL OR TO DEEPEN OR PLUG BACK TO A DIFFERENT RESERVOIR. USE "APPLICATION FOR PERMIT" (FORM C-101) FOR SUCH PROPOSALS.)

1. Type of Well:

Oil Well ☐Gas Well ☒

Other

2. Name of Operator

BURLINGTON RESOURCES OIL & GAS COMPANY LP

3. Address of Operator

3401 E. 30TH STREET, FARMINGTON, NM 87402

4. Well Location

Unit Letter D

:

670'

feet from the

North

line and

935'

feet from the

West

line

Section 10Township 29NRng 10W

NMPM

County

San Juan

11. Elevation (Show whether DR, RKB, RT, GR, etc.)

5813' GL

Pit or Below-grade Tank Application

or Closure ☐Pit type New Drill

Depth to Groundwater

<50'

Distance from nearest fresh water well

>1000'

Distance from nearest surface water

<200'

Pit Liner Thickness:

12

mil

Below-Grade Tank:

Volume

bbls;

Construction Material

12. Check Appropriate Box to Indicate Nature of Notice, Report or Other Data

NOTICE OF INTENTION TO:

PERFORM REMEDIAL WORK ☐PLUG AND ABANDON ☐TEMPORARILY ABANDON ☐CHANGE PLANS ☐PULL OR ALTER CASING ☐MULTIPLE COMPL ☐

SUBSEQUENT REPORT OF:

REMEDIAL WORK ☐ALTERING CASING ☐COMMENCE DRILLING OPNS. ☐P AND A ☐CASING/CEMENT JOB ☐

OTHER:

New Drill ☒OTHER: ☐

13. Describe proposed or completed operations. (Clearly state all pertinent details, and give pertinent dates, including estimated date of starting any proposed work). SEE RULE 1103. For Multiple Completions: Attach wellbore diagram of proposed completion or recompletion.

New Drill, Lined:

Burlington Resources proposes to construct a new drilling pit and an associated vent/flare pit. Based on Burlington's interpretation of the Ecosphere's risk ranking criteria, the new drilling pit will be a lined pit as detailed in Burlington's Revised Drilling / Workover Pit Construction / Operation Procedures dated November 11, 2004 on file at the NMOCD office. A portion of the vent/flare pit will be designed to manage fluids and that portion will be lined as per the risk ranking criteria. Burlington Resources anticipates closing these pits according to the Drilling / Workover Pit Closure Procedure dated August 2, 2004 on file at the NMOCD

I hereby certify that the information above is true and complete to the best of my knowledge and belief. I further certify that any pit or below-grade tank has been/will be constructed or closed according to NMOCD guidelines ☐, a general permit ☒ or an (attached) alternative OCD-approved plan ☐.

SIGNATURE

Patsy Clugston

TITLE

Sr. Regulatory Specialist

DATE

4/5/2005

Type or print name

Patsy Clugston

E-mail address:

pclugston@br-inc.com

Telephone No.

505-326-9518

For State Use Only

APPROVED BY

[Signature]

TITLE

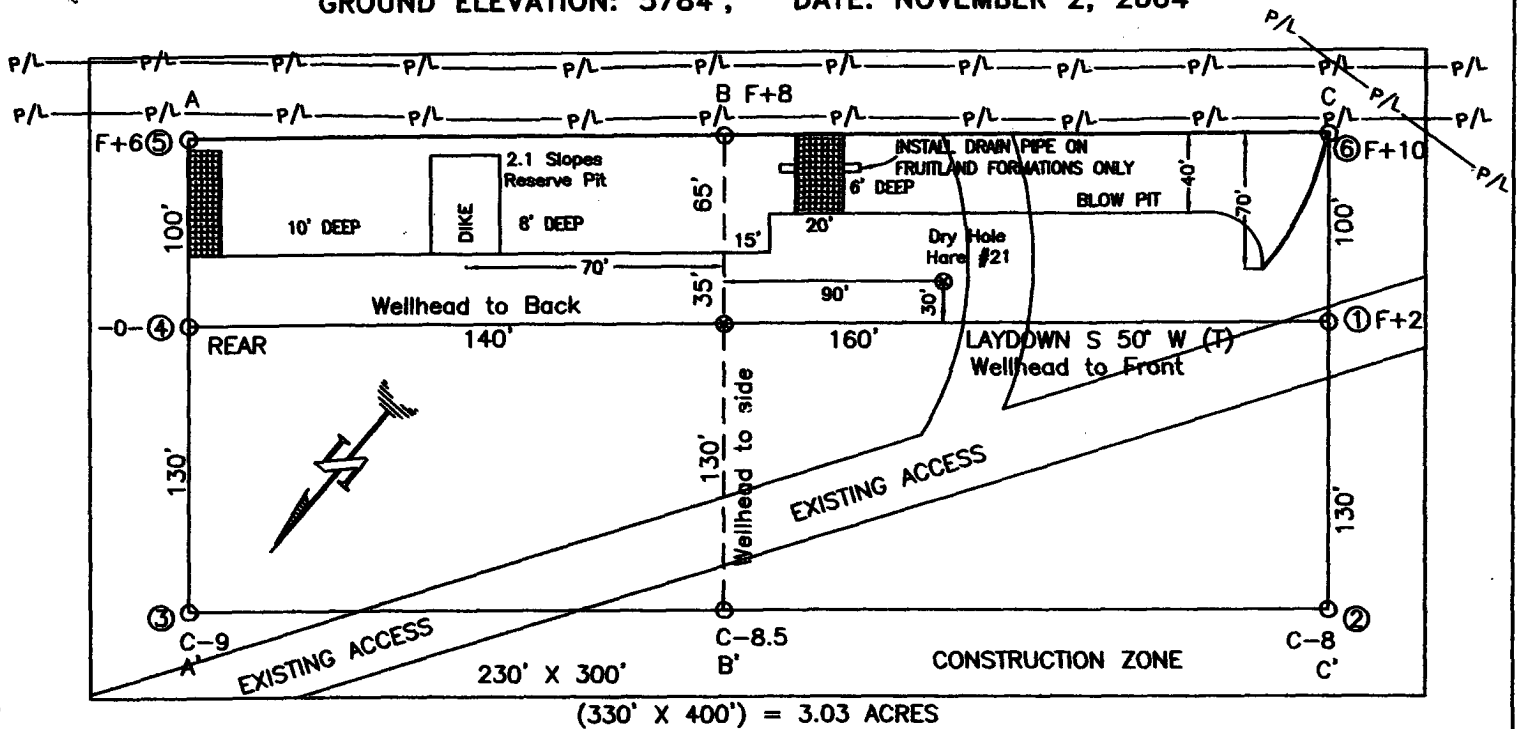
DEPUTY OIL & GAS INSPECTOR, DIST. 4

DATE

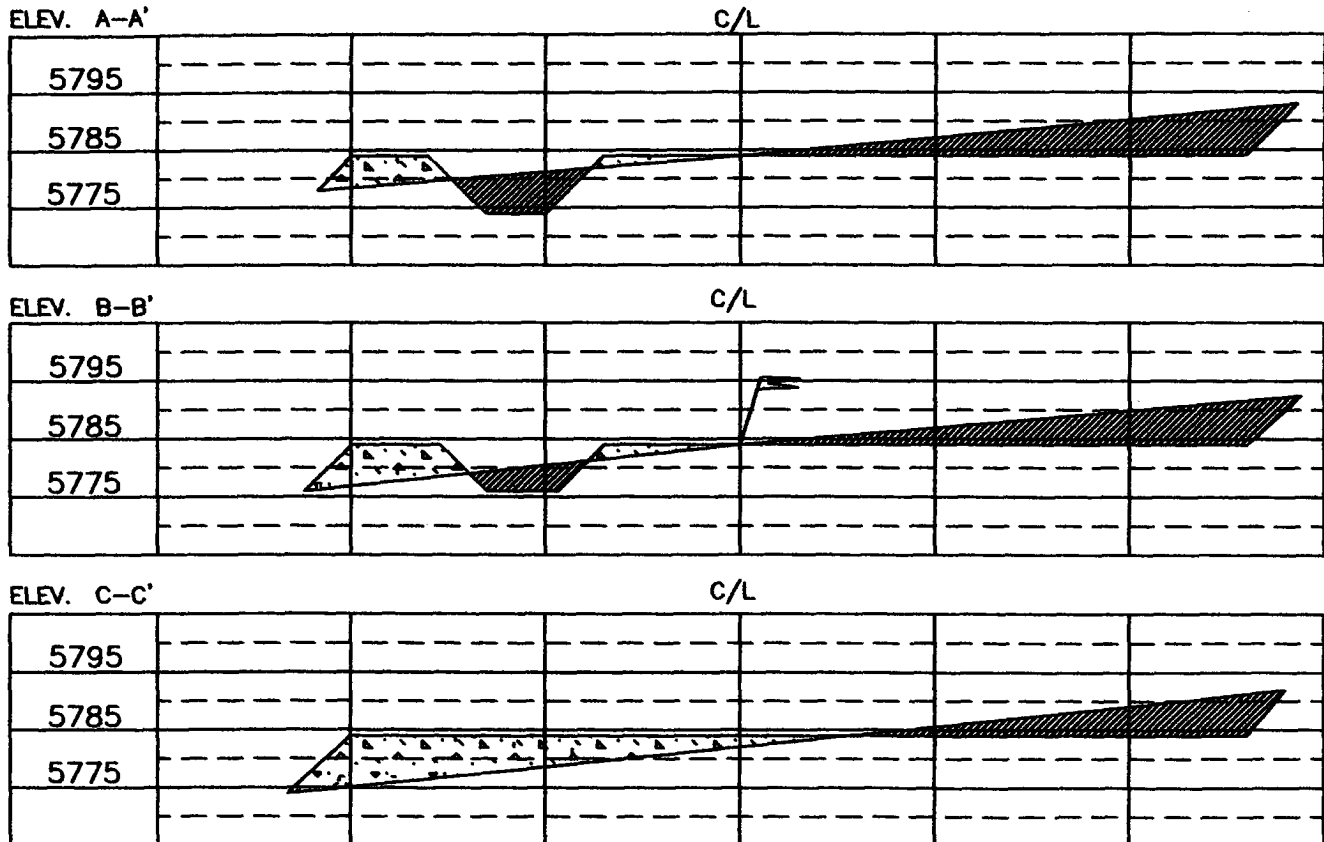
JUN 08 2006

Conditions of Approval (if any):

BURLINGTON RESOURCES OIL & GAS COMPANY LP
HARE 14M, 1105' FNL & 1090' FWL
SECTION 10, T-29-N, R-10-W, NMPM, SAN JUAN COUNTY, NM
GROUND ELEVATION: 5784', DATE: NOVEMBER 2, 2004



RESERVE PIT DIKE: TO BE 8' ABOVE DEEP SIDE (OVERFLOW - 3' WIDE AND 1' ABOVE SHALLOW SIDE).
 BLOW PIT: OVERFLOW PIPE HALFWAY BETWEEN TOP AND BOTTOM AND TO EXTEND OVER PLASTIC LINER AND INTO BLOW PIT.



WELL PAD SKETCH
 NOT TO SCALE

NOTE: VECTOR SURVEYS IS NOT LIABLE FOR UNDERGROUND UTILITIES OR PIPELINES.
 CONTRACTOR SHOULD CALL ONE-CALL FOR LOCATION OF ANY MARKED OR UNMARKED BURIED PIPELINES OR CABLES
 ON WELL PAD AND OR ACCESS ROAD AT LEAST TWO (2) WORKING DAYS PRIOR TO CONSTRUCTION.

OPERATIONS PLAN

Well Name: Hare 14M
Location: Unit D (NWNW) 670' FNL & 935' FWL, Sec. 10, T29N, R10W
San Juan County, New Mexico

Formation: MV/DK
Elevation: 5813'

Surface	San Jose	surface	
Ojo Alamo	1162'	1272'	aquifer
Kirtland	1272'	1963'	gas
Fruitland Coal	1963'	2263'	gas
Pictured Cliffs	2263'	2392'	gas
Lewis	2392'	2961'	
Huerfanito Bentonite	2961'	3229'	
Chacra	3229'	3734'	gas
Upper Cliff House	3734'	3873'	gas
Massive Cliff House	3873'	3991'	gas
Menefee	3991'	4486'	gas
Massive Point Lookout	4486'	4896'	gas
Mancos Shale	4896'	5598'	
Upper Gallup	5598'	6490'	gas
Greenhorn	6490'	6545'	gas
Graneros	6545'	6610'	gas
Two Wells	6610'	6677'	gas
Paguate	6677'	6746'	gas
Cubero	6746'	6794'	gas
Encinal	6794'	6794'	gas
Total Depth:	6794'		gas

Logging Program:

Mud Logs/Coring/DST

Mud logs - none
Coring - none
DST - none
Open hole - none
Cased hole - Gamma Ray, CBL - surface to TD

Mud Program:

<u>Interval</u>	<u>Type</u>	<u>Weight</u>	<u>Vis.</u>	<u>Fluid Loss</u>
0 - 120'	Spud MUD/Air/Air Mist	8.4 - 9.0	40 - 50	no control
120 - 2492'	LSND	8.4 - 9.0	30 - 60	no control
2492' - 6794'	Air/Air Mist/Nitrogen	n/a	n/a	n/a

Casing Program (as listed, the equivalent, or better):

<u>Hole Size</u>	<u>Depth Interval</u>	<u>Csq.Size</u>	<u>Wt.</u>	<u>Grade</u>
12 1/4"	0' - 120'	9 5/8"	32.3#	H-40
8 3/4"	0' - 2492'	7"	20/23#	J-55
6 1/4"	0' - 6794'	4 1/2"	10.5#	J-55

Tubing Program:

<u>Depth Interval</u>	<u>Csq.Size</u>	<u>Wt.</u>	<u>Grade</u>
0' - 6794'	2 3/8"	4.7#	J-55

BOP Specifications, Wellhead and Tests:

Surface to Intermediate TD -

11" 2000 psi minimum double gate BOP stack (Reference Figure #1). After nipple-up prior to drilling out surface casing, BOPE and casing will be tested to 600 psi for 30 minutes.

Intermediate TD to Total Depth -

11" 2000 psi minimum double gate BOP stack (Reference Figure #1). After nipple-up prior to drilling out intermediate casing, BOPE and casing will be tested to 1500 psi for 30 minutes.

Surface to Total Depth -

2" nominal, 2000 psi minimum choke manifold (Reference Figure #3).

Completion Operations -

7 1/16" 2000 psi double gate BOP stack (Reference Figure #2). After nipple-up prior to completion, BOPE, casing and liner top will be tested to 2000 psi for 15 minutes.

Wellhead -

9 5/8" x 7" x 4 1/2" x 2 3/8" x 2000 psi tree assembly.

General -

- Pipe rams will be actuated once each day and blind rams will be actuated once each trip to test proper functioning.
- An upper kelly cock valve with handle available and drill string valves to fit each drill string will be available on the rig floors at all times.
- BOP pit level drill will be conducted weekly for each drill crew.
- All BOP tests & drills will be recorded in daily drilling reports.
- Blind and pipe rams will be equipped with extension hand wheels.

Cementing:

9 5/8" surface casing -

Pre-Set Drilled - Cement with 23 sx Type I, II cement with 20% flyash mixed at 14.5 ppg, 1.61 cu ft per sack yield. (38 cu ft of slurry, bring cement to surface) Wait on cement for 24 hours for pre-set holes before pressure testing or drilling out from under surface.

Conventionally Drilled - Cement with 88 sx Type III cement with 0.25 pps Celloflake, 2% CaCl. (113 cu ft of slurry, 200% excess, bring cement to surface) Wait on cement for 8 hrs for conventionally set holes before pressure testing or drilling out from under surface. Wait on cement appropriate time until cement achieves 250 psi compressive strength at 60 degrees F. prior to nipple up of BOPE. Wait on cement for 8 hrs for conventionally set holes before pressure testing or drilling out from under surface. Test casing to 600 psi for 30 minutes.

Saw tooth guide shoe on bottom. Bowspring centralizers will be run in accordance with Onshore Order #2.

7" intermediate casing -

Lead with 203 sacks (432 cf) Premium Lite cement with 3% calcium chloride, 0.25 pps Celloflake, 5 pps LCM-1, 0.4% fluid loss, 0.4% sodium metasilicate. Tail w/90 sacks (124 cf) Type III cmt w/1% calcium chloride, 0.25 pps Celloflake, 0.2% fluid loss (Total 556 cu ft 50% excess to circulate to surface). WOC minimum of 8 hours before drilling out intermediate casing. If cement does not circulate to surface, a CBL or a temperature survey will be run to determine TOC. Test casing to 1500 psi for 30 minutes.

7" intermediate casing alternative two stage -

Stage collar set 300' above the top of the Fruitland. First stage: Lead w/30 sacks (63 cf) Premium Lite cement with 3% calcium chloride, .25 pps celloflake, 5 pps LCM-1, 0.4% fluid loss. Tail w/90 sxs Type III cmt w/1% calcium chloride, 0.25 pps Celloflake, 0.2% fluid loss. Second stage: 173 sacks (369 cf) Premium Lite cement with 3% calcium chloride, .25 pps celloflake, 5 pps LCM-1, 0.4% fluid loss, 0.4% sodium metasilicate (Total 556 cu ft - 50% excess to circulate to surface).

Cement nose guide shoe on bottom with float collar spaced on top of shoe joint. Bowspring centralizers spaced every other joint off bottom, to the base of the Ojo Alamo @ 1272'. Two turbolating centralizers at the base of the Ojo Alamo @ 1272'. Bowspring centralizers spaced every fourth joint from the base of the Ojo Alamo to the base of the surface casing.

4 1/2" Production Casing -

Pump 281 sxs Premium Lite HS FM w/0.25 pps celloflake, 0.3% CD-32, 6.25 pps LCM-1, 1% fluid loss, 6% gel, 7 pps CSE (557 cu.ft., 30% excess to achieve 100' overlap in 4-1/2" x 7" annulus). WOC a minimum of 18 hrs prior to completing.

Cementing: Continued

Cement float collar stacked on top of float shoe.

Note: If open hole logs are run, cement volumes will be based on 25% excess over caliper volumes.

Cement nose guide shoe on bottom with float collar spaced on top of shoe joint. The liner hanger will have a rubber packoff.

- If hole conditions permit, an adequate water spacer will be pumped ahead of each cement job to prevent cement/ mud contamination or cement hydration.

Special Drilling Operations (Air/Mist Drilling):

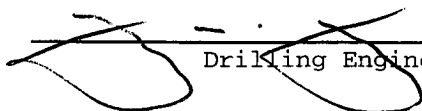
The following equipment will be operational while air/mist drilling:

- An anchored blooie line will be utilized to discharge all cuttings and circulating medium to the blow pit a minimum of 100' from the wellhead.
- The blooie line will be equipped with an automatic igniter or pilot light.
- Compressors will be located a minimum of 100' from the wellhead in the opposite direction from the blooie line.
- Engines will have spark arresters or water cooled exhaust.
- The rotating head will be properly lubricated and maintained.
- A float valve will be utilized above the bit.
- Mud circulating equipment, water, and mud materials will be sufficient to maintain control of the well.

Additional Information:

- The Mesa Verde and Dakota formations will be completed and commingled.
- No abnormal temperatures or hazards are anticipated.
- Anticipated pore pressures are as follows:

Fruitland Coal	300 psi
Pictured Cliffs	600 psi
Mesa Verde	700 psi
Dakota	2000 psi
- Sufficient LCM will be added to the mud system to maintain well control, if lost circulation is encountered below the top of the Pictured Cliffs.
- The west half of Section 10 is dedicated to the Mesa Verde & Dakota Formation.
- This gas is dedicated.



Drilling Engineer

4/6/06

Date

Materials

Casing program

Hole Size	Interval (TMD)	Csg. Size	Weight	Grade
12 1/4"	0' - 350'	9 5/8"	32.3#	H-40
8 3/4"	350' - 3452'	7"	23#	L-80
6 1/4"	3452' - 6867'	4 1/2"	11.6#	L-80

Tubing Program

Hole Size	Interval (TMD)	Csg. Size	Weight	Grade
2 3/8"	0' - 6867'	2 3/8"	4.7#	J-55

Wellhead Equipment

9 5/8" x 7" X 4 1/2" x 2 3/8" - 11" (2000 psi) wellhead assembly

Cementing:

9 5/8" surface casing conventionally drilled: **200% excess cement to bring cement to surface**

Run **329 ft³ (257 sks)** Type III cement with 3% CaCl₂ and 1/4 pps celloflake (1.28 sks/ft³). Wait on cement appropriate time until cement achieves 250 psi compressive strength at 60° F prior to nipple up of BOPE. Wait on cement for 8 hrs for conventionally set holes before pressure testing or drilling out from under surface.

7" production casing: **50% excess cement to bring cement to surface**

Lead with **654 ft³ (307 sks)** Premium Lite w/ 3% CaCl₂, 0.25 pps Cello-Flake, 5 pps LCM-1, 0.4% FL-52 and 0.4% SMS (2.13 sks/ft³). Tail with **124 ft³ (90 sks)** Type III cmt. w/ 1% CaCl₂, 0.25 pps Cello-Flake and 0.2% FL-52 (1.38 sks/ft³). If cement does not circulate to surface, a CBL or a temperature survey will be run to determine TOC.

4 1/2" production casing: **30% excess cement to achieve 100' overlap with intermediate casing**

Run **467 ft³ (236 sks)** Premium Lite HS FM + 0.25pps Cello-Flake, 0.3% CD-32, 6.25pps LCM-1, 1% FL-52 (1.98 sks/ft³).

Saw tooth guide shoe on bottom. Bowspring centralizers will be run in accordance with Onshore Order #2.

BOP and Tests:

Surface to production TD - 11", 2000 psi double gate BOP stack (Reference Figure #1).

Prior to drilling out surface casing, test rams and casing to 600 psi for 30 minutes.

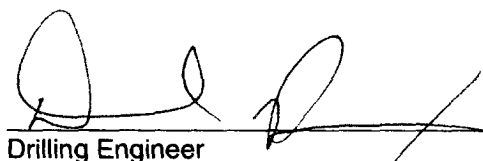
Surface to Total Depth - choke manifold (Reference Figure #2).

Pipe rams will be actuated at least once each day and blind rams will be actuated once each trip to test proper functioning. A Kelly cock valve and drill string safety valves to fit each drill string will be maintained and available on the rig floor.

BOPE tests will be performed using an appropriately sized test plug and test pump and will be recorded using calibrated test gauges and a properly calibrated strip or chart recorder. The test will be recorded in the driller's log and will include a low pressure test requirement of 250 psig held for five minutes and a high pressure test requirement held for ten minutes as described in Onshore Order No. 2 or otherwise noted in the APD. A successful BOPE test using a test plug is considered when no pressure drop occurs over the duration of the test. Test gauges and recorders must be of the proper range and resolution commensurate with the authorized test pressure. Where the intermediate casing strings are used, only one BOPE test will be necessary contingent upon the test being conducted to the highest approved test pressure to which BOPE will be exposed. Casing pressure tests must be held for 30 minutes with no more than 10 percent pressure drop during the duration of the test.

Additional Information:

- This gas is dedicated.
- The West half of section 10 is dedicated to the Mesaverde and Dakota of this well.
- New casing will be utilized.
- Pipe movement (reciprocation) will be done if hole conditions permit.
- No abnormal pressure zones are expected.
- BHP is expected to be 2000 psi.


Drilling Engineer

1/30/06
Date