

UNITED STATES  
DEPARTMENT OF THE INTERIOR  
BUREAU OF LAND MANAGEMENT  
Sundry Notices and Reports on Wells

1. Type of Well  
Oil

2. Name of Operator  
Chace Oil c/o Golden Oil Company

3. Address & Phone No. of Operator  
2200 Post Oak Blvd., Suite 720, Houston, TX 77027 713-626-1110

4. Location of Well, Footage, Sec., T, R, M  
1850' FSL & 790' FEL, Section 12, T-23-N, R-4-W, Unit I

5. Lease Number  
Contract 47  
6. If Indian, All. or  
Tribe Name  
Jicarilla Apache  
7. Unit Agreement Name  
8. Well Name & Number  
Jicarilla Apache 47 #1  
9. API Well No.  
30-039-22859  
10. Field and Pool  
So. Lindrith Gallup  
Chacon Dakota  
11. County & State  
Rio Arriba, NM

12. CHECK APPROPRIATE BOX TO INDICATE NATURE OF NOTICE, REPORT, OTHER DATA

Type of Submission

☒ Notice of Intent

☐ Subsequent Report

☐ Final Abandonment

Type of Action

☒ Abandonment

☐ Recompletion

☐ Plugging Back

☐ Casing Repair

☐ Altering Casing

☒ Other - Return to Production

☐ Change of Plans

☐ New Construction

☐ Non-Routine Fracturing

☐ Water Shut off

☐ Conversion to Injection

13. Describe Proposed or Completed Operations

As stated in a Sundry Notice dated 3/14/06, Golden Oil plans to recover the fish and then repair the casing in this well and return it to production.

If the casing repair is not economical, then Golden proposes to P&A this well per the attached procedure.

- see changes -

14. I hereby certify that the foregoing is true and correct.

Signed William F. Clark Title Contractor Date June 6, 2006  
William F. Clark

(This space for Federal or State Office use)

APPROVED BY Original Signed: Stephen Mason Title \_\_\_\_\_ Date JUN 21 2006  
CONDITION OF APPROVAL, if any:

Title 18 U.S.C. Section 1001, makes it a crime for any person knowingly to make to any department or agency of the United States any false, fictitious or fraudulent statements or representations as to any matter within its jurisdiction.

NMOC  
5

## PLUG AND ABANDONMENT PROCEDURE

6/6/06

**Jicarilla Tribal Contract 47 #1**  
**South Lindrith Gallup / Chacon Dakota**  
**1850 FSL & 790' FEL, Section 12, T23N, R4W**  
**Rio Arriba County, NM**

Note: All cement volumes use 100% excess outside pipe and 50' excess inside pipe. The stabilizing wellbore fluid will be 8.3 ppg, sufficient to balance all exposed formation pressures. All cement will be ASTM Type III, mixed at 14.8 ppg with a 1.32 cf/sx yield.

1. Install and/or test rig anchors. Prepare blow pit. Comply with all NMOCD, BLM and Golden safety rules and regulations. MOL and RU daylight pulling unit. Blow well down; kill with water if necessary.
2. If the attempt to repair the casing is unsuccessful or deemed as uneconomical then plug the well as follows.
3. **Plug #1 (Dakota and Gallup perforations and top, 6268' – 6168')**: Set a 4.5" CIBP or CR at 6268'. Load casing with water and circulate the well clean. Mix 11 sxs cement and spot a balanced plug inside casing above the CR to isolate the Dakota and Gallup perforations. PUH with tubing to 4682'.
4. **Plug #2 (Mesaverde top, 4682' – 4582')**: Mix 11 sxs cement (use 25 sxs, if the depth of the casing leak is below this interval) and spot a balanced plug inside casing to cover the Mesaverde top. If the casing leaks then WOC and tag cement. Then PUH to 3095'.  
*Handwritten note: Plug cement inside shoe 4 1/2" casing CIBP stands no cement in this interval*
5. **Plug #3 (Pictured Cliffs, Fruitland, Kirtland and Ojo Alamo tops, 3095' - 2602')**: Pressure test casing to 500#. *3/40* If casing does not test, then spot or tag subsequent plugs as appropriate. Mix 37 sxs cement (use extra if the casing does not test) and spot a balanced plug inside casing to cover through the Ojo Alamo top. PUH to 1495'.
6. **Plug #4 (Nacimiento top, 1495'- 1395')**: Mix 11 sxs cement and spot a balanced plug inside casing to cover the Nacimiento top. PUH to 313'
7. **Plug #6 (8-5/8" Surface casing shoe, 313' – 213' or Surface)**: Connect the pump line to the bradenhead valve. Pressure test the BH annulus to 300#; note the volume to load. If the BH annulus tests then mix 11 sxs cement and spot a plug from 313' to 213'. Then perforate the 4.5" casing at 100' and fill then annulus with cement to surface. If the BH annulus does not hold, then perforate at 313' and circulate good cement to surface filling the casing and BH annulus. Shut well in and WOC.
8. ND BOP and cut off casing below surface. Install P&A marker with cement to comply with regulations. RD, move off location, cut off anchors and restore location.

# Jicarilla Tribal Contract 47 #1

Current

South Lindrith Gallup / Chacon Dakota

1850' FSL & 790' FEL, Section 12, T-23-N, R-4-W, Rio Arriba County, NM

Lat: N \_\_\_\_\_ / Long: W \_\_\_\_\_ / API #30-039-22859

Today's Date: 6/6/06

Spud: 12/23/81

Completed: 8/21/82

Elevation: 7384' GL  
7396' KB

12-1/4" hole

TOC @ 176' (Calc., 75%)

8-5/8" 22# Casing set @ 263'  
Cement with 250 sxs (Circulated to Surface)

Nacimiento @ 1445'

Ojo Alamo @ 2652'

Kirtland @ 2826'

Fruitland @ 2895'

2-3/8" Tubing set at 7496' ??  
with rods and anchor ??

Pictured Cliffs @ 3045'

DV Tool @ 4000'  
Cmt with 750 sxs (1162 cf)

TOC @ 4298' (Calc, 75%)

Cliffhouse @ 4632'

Gallup @ 6229'

Gallup Perforations:  
6318' – 6490',  
6907' – 7014'

Dakota @ 7287'

Greenhorn & Dakota  
Perforations:  
7216' – 7488'

PBTD 7715'

7-7/8" hole

TD 7760'

4-1/2" 11.6# Casing set @ 7753'  
Cement with 750 sxs (1050 cf)  
TOC at 4298' (Calc. 75%)

# Jicarilla Tribal Contract 47 #1

## Proposed P&A

South Lindrith Gallup / Chacon Dakota  
 1850' FSL & 790' FEL, Section 12, T-23-N, R-4-W, Rio Arriba County, NM  
 Lat: N \_\_\_\_\_ / Long: W \_\_\_\_\_ / API #30-039-22859

Today's Date: 6/6/06  
 Spud: 12/23/81  
 Completed: 8/21/82  
 Elevation: 7384' GL  
 7396' KB

Nacimiento @ 1445'

Ojo Alamo @ 2652'

Kirtland @ 2826'

Fruitland @ 2895'

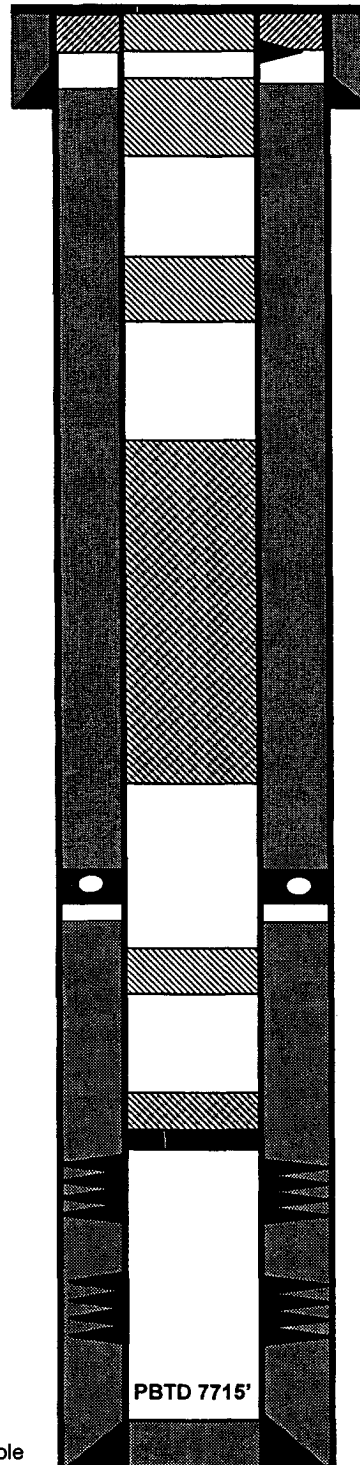
Pictured Cliffs @ 3045'

Cliffhouse @ 4632'

Gallup @ 6229'

Dakota @ 7287'

12-1/4" hole



7-7/8" hole

PBSD 7715'

TD 7760'

TOC @ 176' (Calc., 75%)

8-5/8" 22# Casing set @ 263'  
 Cement with 250 sxs (Circulated to Surface)

Perforate @ 100'  
 or 331', after BH test.

**Plug #6: 100' – Surface**  
 Cmt with 40 sxs

**Plug #5: 313' – 213'**  
 Cmt with 11 sxs

**Plug #4: 1495' – 1395'**  
 Cmt with 46 sxs, 35 sxs  
 outside and 11 inside

**Plug #3: 3095' – 2602'**  
 Cmt with 37 sxs

DV Tool @ 4000'  
 Cmt with 750 sxs (1162 cf)

TOC @ 4298' (Calc, 75%)

**Plug #2: 4682' – 4582'**  
 Cmt with 11 sxs

**Set CR at 6268'**

Gallup Perforations:  
 6318' – 6490'  
 6907' – 7014'

**Plug #1: 6268' – 6168'**  
 Cmt with 11 sxs

Greenhorn & Dakota  
 Perforations:  
 7216' – 7488'

4-1/2" 11.6# Casing set @ 7753'  
 Cement with 750 sxs (1050 cf)  
 TOC at 4298' (Calc. 75%)

The Jicarilla Apache Nation requires 45 days to evaluate this well beginning from June 8 2006 in order to determine if they would like to assume ownership of the well. If the Jicarilla Apache Nation has not contacted your office before the end of the 45 days you may proceed with plugging operations.