

UNITED STATES  
DEPARTMENT OF THE INTERIOR  
BUREAU OF LAND MANAGEMENT

APPLICATION FOR PERMIT TO DRILL OR REENTER

2006 MAY 2 AM 6 39

1a. Type of Work: <input checked="" type="checkbox"/> DRILL <input type="checkbox"/> REENTER		5. Lease Serial No. Jicarilla Contract 462	
1b. Type of Well: <input type="checkbox"/> Oil Well <input checked="" type="checkbox"/> Gas Well <input type="checkbox"/> Other		6. If Indian, Allottee or Tribe Name Jicarilla Apache Nation	
2. Name of Operator Black Hills Gas Resources		7. If Unit or CA Agreement, Name and No. NA	
3a. Address PO Box 249/3200 N 1st Street Bloomfield, NM		8. Lease Name and Well No. Jicarilla 462-22 #220 122	
3b. Phone No. (include area code) 505-634-1111 ext 27		9. API Well No. 30-039-29889	
4. Location of Well (Report location clearly and in accordance with any State requirements. *) At surface <sup>1975</sup> <del>2025</del> FNL <sup>2070</sup> <del>2055</del> FWL SE/NW At proposed prod. zone 2025' FNL 2055 FWL SE/NW		10. Field and Pool, or Exploratory Bakota Basin Dakota	
14. Distance in miles and direction from nearest town or post office* 20 miles Southwest of Dulce, NM		11. Sec., T., R., M., or Blk. and Survey or Area F Sec. 22 T30N R3W Mer NMP	
15. Distance from proposed* location to nearest property or lease line, ft. (Also to nearest drig. unit line, if any) 2400 feet	16. No. of Acres in lease 1920	17. Spacing Unit dedicated to this well 160 320 N/2	
18. Distance from proposed location* to nearest well, drilling, completed, applied for, on this lease, ft. 50 feet (Twin Loc)	19. Proposed Depth 8498 feet bgs	20. BLM/BIA Bond No. on file NMB000230	
21. Elevations (Show whether DF, KDB, RT, GL, etc.) 7209 GL	22. Approximate date work will start* 6/1/2006	23. Estimated duration 45-60 Days Drlg & Compl	

24. Attachments

The following, completed in accordance with the requirements of Onshore Oil and Gas Order No.1, shall be attached to this form:

- |                                                                                                                                                 |                                                                                                                                                                                                                                     |  |
|-------------------------------------------------------------------------------------------------------------------------------------------------|-------------------------------------------------------------------------------------------------------------------------------------------------------------------------------------------------------------------------------------|--|
| 1. Well plat certified by a registered surveyor.                                                                                                | 4. Bond to cover the operations unless covered by an existing bond on file (see Item 20 above).<br>5. Operator certification.<br>6. Such other site specific information and/or plans as may be required by the authorized officer. |  |
| 2. A Drilling Plan.                                                                                                                             |                                                                                                                                                                                                                                     |  |
| 3. A Surface Use Plan (if the location is on National Forest System Lands, the SUPO shall be filed with the appropriate Forest Service Office). |                                                                                                                                                                                                                                     |  |
| <b>SEE ATTACHED FOR CONDITIONS OF APPROVAL</b>                                                                                                  |                                                                                                                                                                                                                                     |  |

25. Signature <i>Lynn Benally</i>	Name (Printed/Typed) Lynn H. Benally	Date 4-26-06
Title Regulatory Specialist/Black Hills Gas Resources		
Approved by (Signature) <i>[Signature]</i>	Name (Printed/Typed)	Date 7/1/06
Title AEM	Office FFO	

Application approval does not warrant or certify that the applicant holds legal or equitable title to those rights in the subject lease which would entitle the applicant to conduct operations thereon.  
Conditions of approval, if any, are attached.

Title 18 U.S.C. Section 1001 and Title 43 U.S.C. Section 1212, make it a crime for any person knowingly and willfully to make to any department or agency of the United States any false, fictitious or fraudulent statements or representations as to any matter within its jurisdiction.

\*(Instructions on reverse)



NMOCD  
8

This action is subject to technical and procedural review pursuant to 43 CFR 3165.2 and appeal pursuant to 43 CFR 3165.4

DRILLING OPERATIONS AUTHORIZED ARE SUBJECT TO COMPLIANCE WITH ATTACHED "GENERAL REQUIREMENTS".

DISTRICT I  
1625 N. French Dr., Hobbs, N.M. 88240

DISTRICT II  
1301 W. Grand Ave., Artesia, N.M. 88210

DISTRICT III  
1000 Rio Brazos Rd., Aztec, N.M. 87410

DISTRICT IV  
1220 South St. Francis Dr., Santa Fe, NM 87505

State of New Mexico  
Energy, Minerals & Natural Resources Department

OIL CONSERVATION DIVISION

1220 South St. Francis Dr.  
Santa Fe, NM 87505

Form C-102  
Revised October 12, 2005

Submit to Appropriate District Office  
State Lease - 4 Copies  
Fee Lease - 3 Copies

AMENDED REPORT

WELL LOCATION AND ACREAGE DEDICATION PLAT

<sup>1</sup> API Number		<sup>2</sup> Pool Code 71599	<sup>3</sup> Pool Name BASIN DAKOTA
<sup>4</sup> Property Code 24245 23821	<sup>5</sup> Property Name JICARILLA 462-22		<sup>6</sup> Well Number 1225
<sup>7</sup> OGRID No. 013925	<sup>8</sup> Operator Name BLACK HILLS GAS RESOURCES		<sup>9</sup> Elevation 7209'

<sup>10</sup> Surface Location

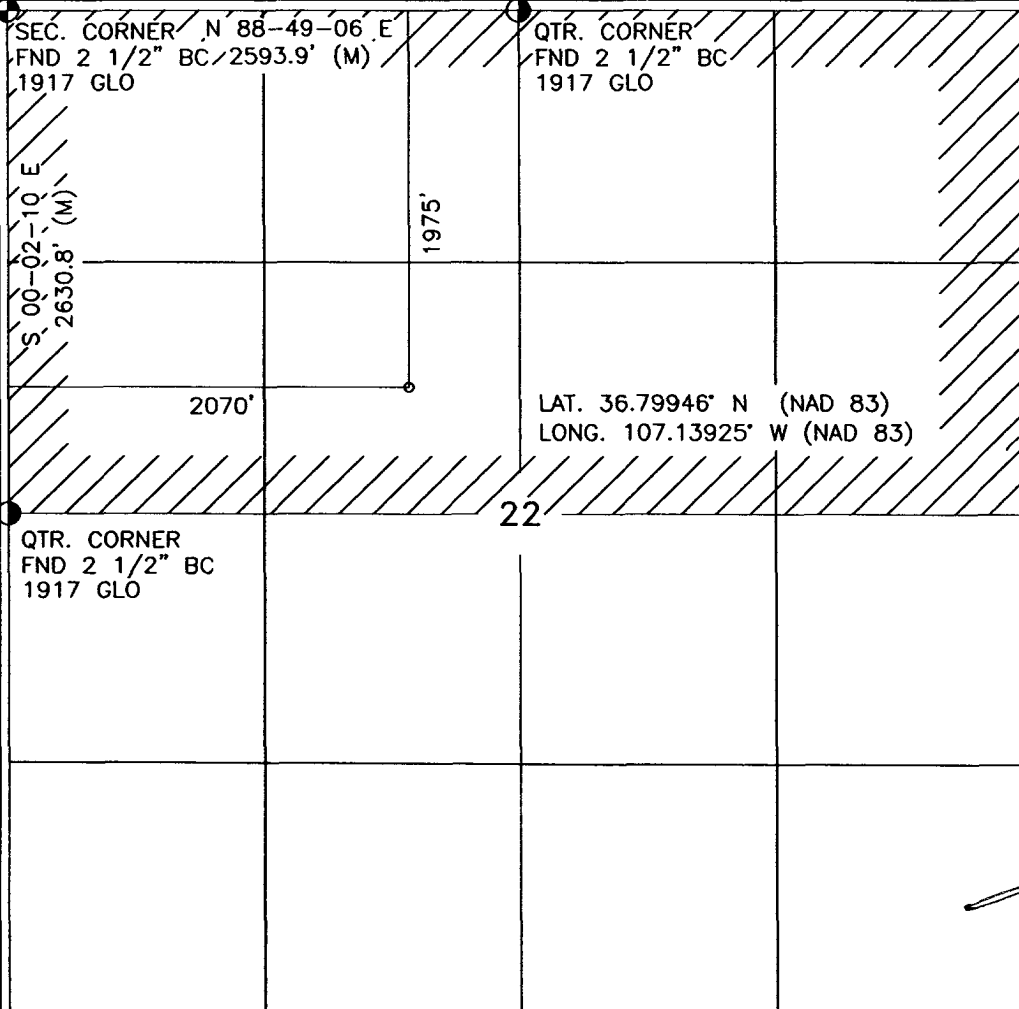
UL or lot no.	Section	Township	Range	Lot Idn	Feet from the	North/South line	Feet from the	East/West line	County
F	22	30-N	3-W		1975	NORTH	2070	WEST	RIO ARRIBA

<sup>11</sup> Bottom Hole Location If Different From Surface

UL or lot no.	Section	Township	Range	Lot Idn	Feet from the	North/South line	Feet from the	East/West line	County
<sup>12</sup> Dedicated Acres 320			<sup>13</sup> Joint or Infill		<sup>14</sup> Consolidation Code		<sup>15</sup> Order No.		

NO ALLOWABLE WILL BE ASSIGNED TO THIS COMPLETION UNTIL ALL INTERESTS HAVE BEEN CONSOLIDATED OR A NON-STANDARD UNIT HAS BEEN APPROVED BY THE DIVISION

16



17 OPERATOR CERTIFICATION

I hereby certify that the information contained herein is true and complete to the best of my knowledge and belief, and that this organization either owns a working interest or unleased mineral interest in the land including the proposed bottom hole location or has a right to drill this well at this location pursuant to a contract with an owner of such a mineral or working interest, or to a voluntary pooling agreement or a compulsory pooling order heretofore entered by the division.

*Daniel Manus* 6/22/06  
Signature Date  
Daniel Manus  
Printed Name

18 SURVEYOR CERTIFICATION

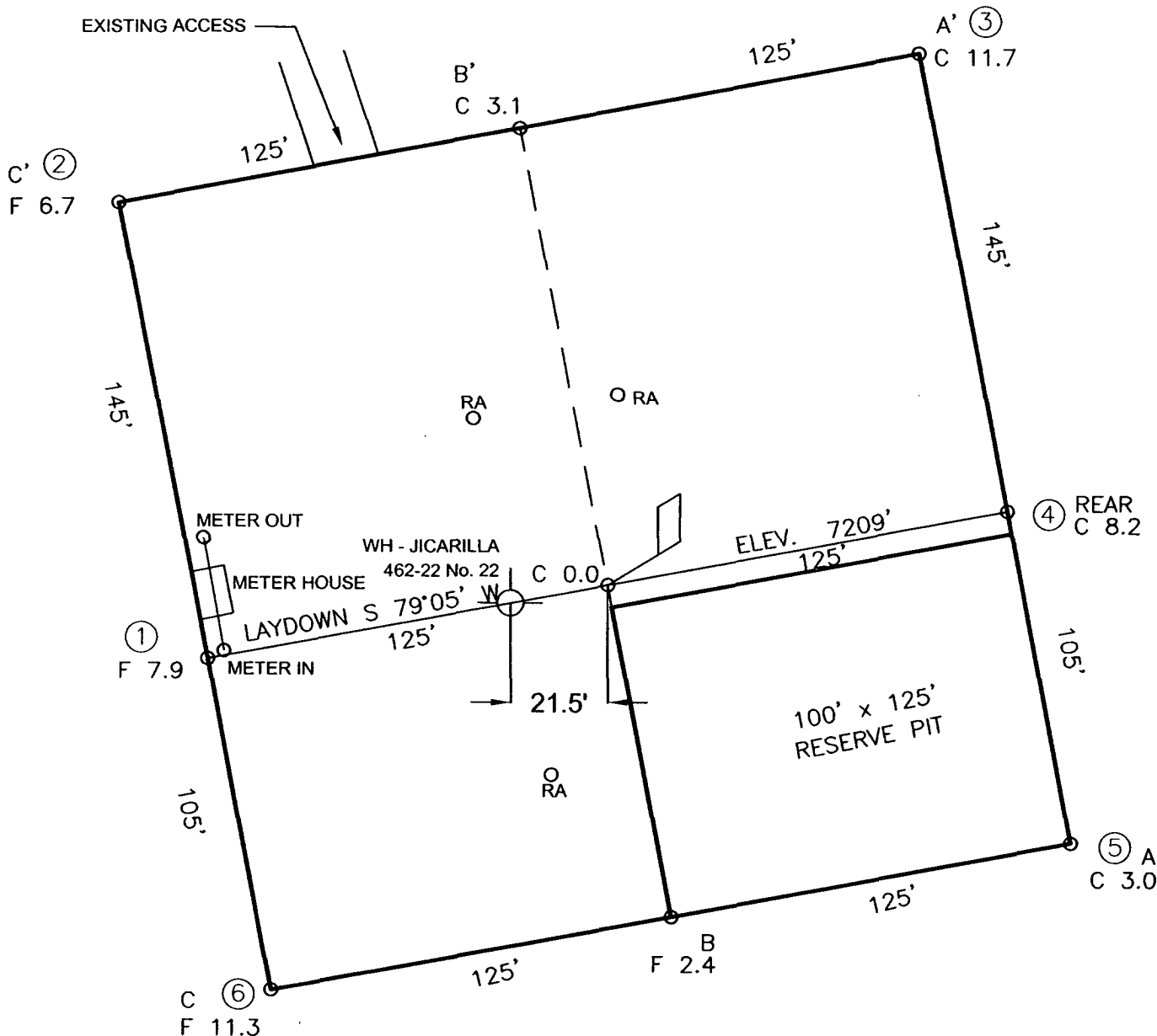
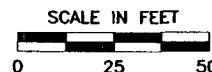
I hereby certify that the well location shown on this plat was plotted from field notes of actual surveys made by me or under my supervision, and that the same is true and correct to the best of my belief.

Date of Survey  
Signature of Professional Surveyor  
  
Certificate Number

8


WELL PAD DIAGRAM

COMPANY: BLACK HILLS GAS RESOURCES  
 LEASE: JICARILLA 462-22 No. 22D  
 FOOTAGE: 1975 FNL 2070 FWL  
 SEC.: 22, TWN: 30-N, RNG: 3-W, NMPM  
 ELEVATION: 7209'



NOTE:

DAGGETT ENTERPRISES, INC. IS NOT LIABLE FOR UNDERGROUND UTILITIES OR PIPELINES. NEW MEXICO ONE CALL TO BE NOTIFIED 48 HOURS PRIOR TO EXCAVATION OR CONSTRUCTION.

REVISION	DATE	REVISED BY
WELL PAD ROTATION	08/09/06	A.G.
 <b>Daggett Enterprises, Inc.</b> Surveying and Oil Field Services P. O. Box 15068 • Farmington, NM 87401 Phone (505) 326-1772 • Fax (505) 326-6019 NEW MEXICO L.S. 14831		
DRAWN BY: A.G.	CADFILE: MNS00PLB	
ROW#: MNS00	DATE: 06/07/06	

WELL PAD CROSS-SECTIONAL DIAGRAM

COMPANY: BLACK HILLS GAS RESOURCES

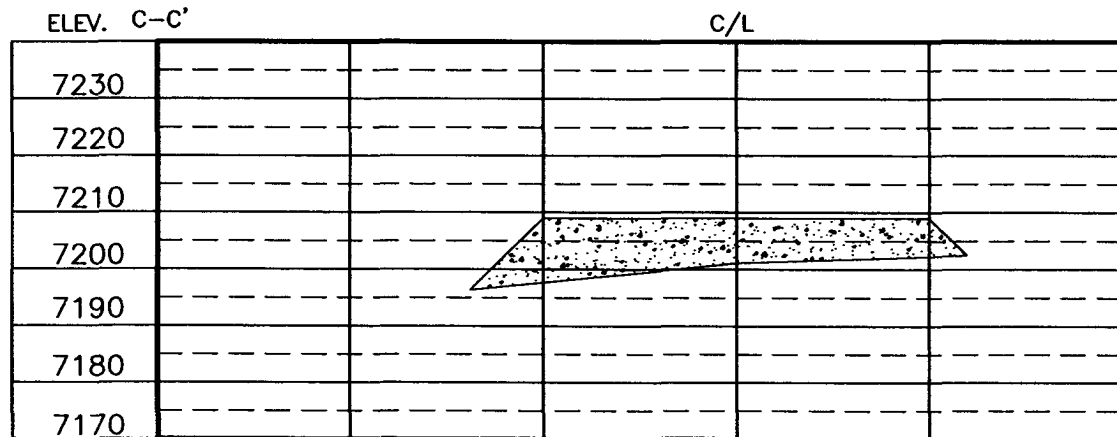
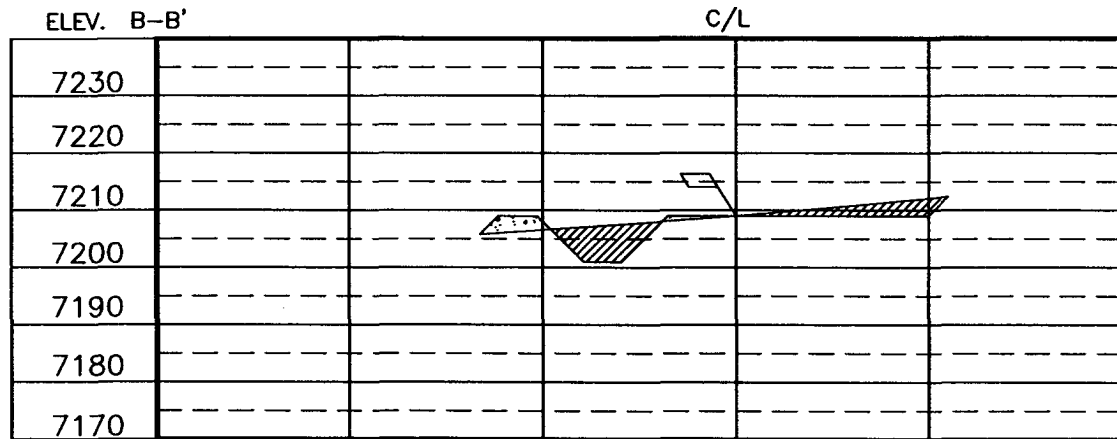
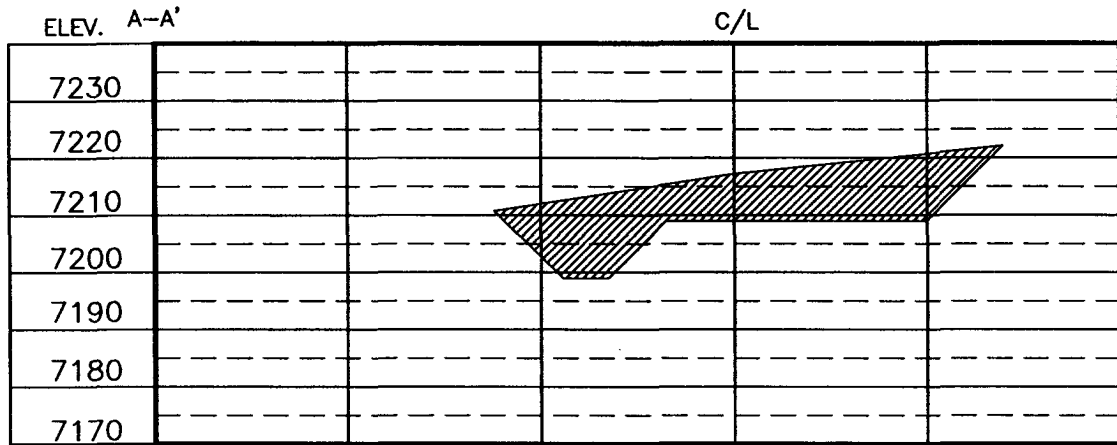
LEASE: JICARILLA 462-22 No. 22D

FOOTAGE: 1975 FNL, 2070 FWL

SEC.: 22, TWN: 30-N, RNG: 3-W, NMPM

ELEVATION: 7209'

NOTE:  
DAGGETT ENTERPRISES, INC. IS NOT LIABLE FOR  
UNDERGROUND UTILITIES OR PIPELINES. NEW MEXICO  
ONE CALL TO BE NOTIFIED 48 HOURS PRIOR TO  
EXCAVATION OR CONSTRUCTION.



REF. DWG. MINS00PLB WELL PAD DIAGRAM

REVISION: \_\_\_\_\_ DATE: \_\_\_\_\_

WELL PAD ROTATION \_\_\_\_\_ DATE: 06/29/06

DESIGNED BY: \_\_\_\_\_

DRAWN BY: A.G. DATE: 06/07/06

ROW#: MINS00

**Daggett Enterprises, Inc.**  
Surveying and Oil Field Services  
P. O. Box 15068 • Farmington, NM 87401  
Phone (505) 326-1772 • Fax (505) 326-6019  
NEW MEXICO L.S. 14831  
CADFILE: MINS00CFB



**Black Hills Gas Resources**

**Jicarilla 462-22 #22D**  
2,025' FNL 2,055' FWL (SE/NW)  
Sec.22 T30N R3W  
Rio Arriba County, New Mexico  
Lease: Contract 462



**DRILLING PROGRAM**  
(Per Rule 320)

This Application for Permit to Drill (APD) was initiated under the NOS process as stated in Onshore Order No. 1 and supporting Bureau of Land Management (BLM) documents. This NOS process includes an onsite meeting which was held on March 9, 2004 as determined by Bureau of Land Management (BLM), Bureau of Indian Affairs (BIA) and Jicarilla Oil & Gas Administration (JOGA), and at which time the specific concerns of Mallon Oil Company (Mallon) the predecessor of BHGR, included in the meeting were BLM, BIA and JOGA.

**BHGR RESPECTFULLY REQUESTS THAT ALL INFORMATION REGARDING THIS WELL BE KEPT CONFIDENTIAL.**

**SURFACE FORMATION** – San Jose

**GROUND ELEVATION** – 7,209'

**ESTIMATED FORMATION TOPS** - (Water, oil, gas and/or other mineral-bearing formations)

San Jose	Surface	Sandstone, shales & siltstones
Ojo Alamo	3,191'	Sandstone, shales & siltstones
Pictured Cliffs	3,699'	Sandstone, shales & siltstones
Lewis	3,815	Sandstone, shales & siltstones
Cliffhouse	5,671'	Sandstone, shales & siltstones
Point Lookout	6,078'	Sandstone, shales & siltstones
Mancos	6,549'	Sandstone, shales & siltstones
Gallup	7,379'	Sandstone, shales & siltstones
Dakota	8,271'	Sandstone
Morrison	8,498'	Sandstone

**TOTAL DEPTH**            **8,698'**

Estimated depths of anticipated fresh water, oil, or gas:

Ojo Alamo	3,281'	Gas, water, sand
Pictured Cliffs	3,826'	Gas, water, sand
Lewis	3,911'	Gas, water, sand, shale
Cliffhouse	5,797'	Gas, water, sand, shale
Point Lookout	6,184'	Gas, water, sand, shale
Mancos	6,658'	Gas, water, sand, shale
Gallup	7,463'	Gas, oil, water, sand, shale
Dakota	8,357'	Gas, water, sand, shale
Morrison	8,582'	

**CASING PROGRAM**

Depth	Hole Diameter	Casing Diameter	Casing Weight and Grade	Cement
0-300'	12-1/4"	9 5/8"	J-55 36# ST&C	+/- 305 sxs Class B <i>*Circulate cement</i>
0-3908	8-3/4"	7"	N 80 23# LT&C <i>*Circulate cement</i>	+/- 792 sxs lite or 65:35 poz and +/- 166 sxs 50:50 poz
3908-TD	6-1/8"	4-1/2"	L-80 11.6# LT&C <i>TOC to 3808'</i>	+/- 656 sxs lite or 65:35 poz and +/- <i>Minimum 206 sxs 50:50 poz</i>

\* Actual cement volume to be determined by caliper log.

Yields: Class B yield = 1.18 ft<sup>3</sup>/sx  
65:35 Poz yield = 1.62 ft<sup>3</sup>/sx  
50:50 Poz yield = 1.26 ft<sup>3</sup>/sx

*Where cement does not circulate, a CBL, Temp Survey, or other will be run*

All fresh water and prospectively valuable minerals encountered during drilling, will be recorded by depth and protected.

**PRESSURE CONTROL**

BOPs and choke manifold will be installed and pressure tested before drilling out under surface casing (subsequent pressure test will be performed whenever pressure seals are broken), and then will be checked daily as to mechanical operating condition. BOP's will be pressure tested at least once every 30 days. Ram type preventors and related pressure control equipment will be pressure tested to 1,000 psi. Annular type preventor will be pressure tested to 50% of the rated working pressure, not to exceed 1,000 psi. All casing strings will be pressure tested to 0.22 psi/ft. or 1,000 psi, whichever is greater, not to exceed 70% of internal yield.

BOP to be either double gate rams or an annular preventor as per Onshore Order No. 2.

**Statement on Accumulator System and Location of Hydraulic Controls**

The drilling rig has not yet been selected for this well. Selection will take place after approval of this application. Manual and/or hydraulic controls will be in compliance with Onshore Order No. 2 for 2M systems.

A remote accumulator will be used. Pressures, capacities, location of remote hydraulic and manual controls will be identified at the time of the BLM supervised BOP test.

**MUD PROGRAM**

- 0' - 250' Fresh water - M.W. 8.5 ppg, Vis 30-33
- 250' - 3908' Fresh water - Low solids non-dispersed  
M.W. 8.5 - 9.2 ppg  
Vis - 28 - 50 sec  
W.L. 15cc or less
- 3908' - 8,698' Air - Deliver ± 2400 SCFM (Air) @ 1700 psi & 35 gpm fluid.

Sufficient mud materials to maintain mud properties, control lost circulation and to contain "kick" will be available at wellsite.

**AUXILIARY EQUIPMENT**

- A) A Kelly cock will be kept in the drill string at all times
- B) Inside BOP or stab-in valve (available on rig floor)
- C) Mud monitoring will be visually observed

LOGGING, CORING, TESTING PROGRAM

- A) Logging: DIL- CNL-FDC-GR - TD - BSC (GR to surface)  
Sonic (BSC to TD)
- B) Coring: None
- C) Testing: Possible DST – None anticipated. Drill stem tests may be run on shows of interest

ABNORMAL CONDITIONS

- A) Pressures: No abnormal conditions are anticipated  
Bottom hole pressure gradient – 0.31 psi/ft
- B) Temperatures: No abnormal conditions are anticipated
- C) H<sub>2</sub>S: See attached H<sub>2</sub>S plan in event H<sub>2</sub>S is encountered.
- D) Estimated bottomhole pressure: 2720 psi

ANTICIPATED START DATE

June 1, 2006

COMPLETION

The location pad will be of sufficient size to accommodate all completion activities and equipment. A string of 2-3/8" J-55 4.7#/ft tubing will be run for a flowing string. A Sundry Notice will be submitted with a revised completion program if warranted.

Jicarilla 464-22 #22D  
 2,025' FNL 2,055' FWL, ( SE 1/4 NW 1/4 )  
 Sec. 22 T 30N R 3W  
 Rio Arriba County, New Mexico  
 Contract 464

**SURFACE CASING AND CENTRALIZER DESIGN**

Proposed Total Depth: 8,698 '  
 Proposed Depth of Surface Casing: 275 '  
 Estimated Pressure Gradient: 0.31 psi/ft  
 Bottom Hole Pressure at  
     0.31 psi/ft x 4,000 ' = psi  
 Hydrostatic Head of gas/oil mud:  
     0.22 psi/ft x 4,000 ' = psi

Maximum Design Surface Pressure

Bottom Hole Pressure      -      Hydrostatic Head      =  
 ( 0.31 psi/ft x 8,698 ' ) - ( 0.22 psi/ft x 8,698 ' ) =  
     2,696 psi                      -                      1,914 psi                      =      783 psi

Casing Strengths

9 5/8 J-55 24# ST&C

Wt.	Tension (lbs)	Burst (psi)	Collapse (psi)
36 #	394,000	3,520	2,020
40 #	452,000	2,950	2,570

Safety Factors

Tension (Dry): 1.8      Burst: 1.0      Collapse: 1.125  
 Tension (Dry): 36 # / ft x 275 ' = 9,900 #  
     Safety Factor =  $\frac{394,000}{9,900}$  = 39.80      ok  
 Burst: Safety Factor =  $\frac{3,520 \text{ psi}}{783 \text{ psi}}$  = 4.50      ok  
 Collapse: Hydrostatic = 0.052 x 9.0 ppg x 275 ' = 129 psi  
     Safety Factor =  $\frac{2,020 \text{ psi}}{129 \text{ psi}}$  = 15.70      ok

Use 275 ' 9.625 J-55 24# ST&C

Use 2,000 psi minimum casinghead and BOP's but will test to 1,000 psi

Centralizers

5 Total  
 1 near surface at 40'  
 2 -1 each at middle of bottom joint, second joint  
 2 -1 each at every other joint 40' spacing  
 Total centralized ± 200 ' ( 75 ' - 275 ' )

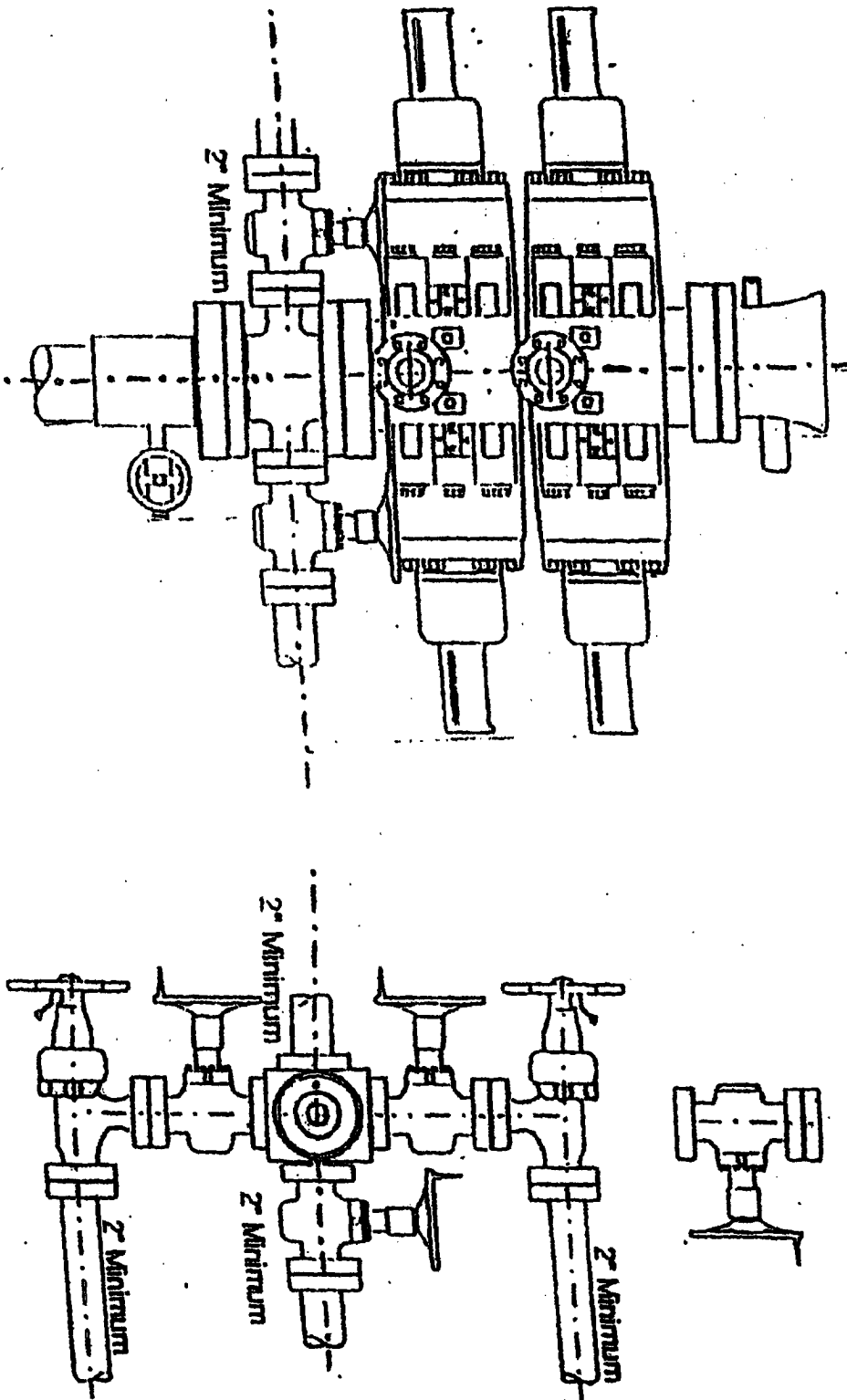
Note that field experience indicates that additional centralizers greatly increase the chance of "sticking" the surface casing prior to reaching surface casing total depth.



# 2-M SYSTEM

Black Hills Gas Resources, Inc.

ANNULAR PREVENTOR MAY BE SUBSTITUTED FOR DOUBLE GATE PREVENTORS  
BOP PRESSURE TEST TO 1,000 PSI





## Black Hills Gas Resources

# Hydrogen Sulfide Drilling Operations Plan

## I. Hydrogen Sulfide Training

All personnel, whether regularly assigned, contracted, or employed on an unscheduled basis, will receive training from a qualified instructor in the following areas prior to commencing drilling operations on this well:

1. The hazards and characteristics of hydrogen sulfide (H<sub>2</sub>S).
2. The proper use and maintenance of personal protective equipment and life support systems.
3. The proper use of H<sub>2</sub>S detectors, alarms, warning systems, briefing areas, evacuation procedures, and prevailing winds.
4. The proper techniques for first aid and rescue procedures.

In addition, supervisory personnel will be trained in the following areas:

1. The effects of H<sub>2</sub>S on metal components. If high tensile tubular are to be used, personnel will be trained in their special maintenance requirements.
2. Corrective action and shut-in procedures when drilling or reworking a well and blowout prevention and well control procedures.
3. The contents and requirements of the H<sub>2</sub>S Drilling Operations Plan and the Public Protection Plan.

There will be an initial training session just prior to encountering a known or probable H<sub>2</sub>S zone (within 3 days or 500 feet) and weekly H<sub>2</sub>S and well control drills for all personnel in each crew. The initial training sessions shall include a review of the site specific H<sub>2</sub>S Drilling Operations Plan and the Public Protection Plan. This plan shall be available at the well site. All personnel will be required to carry documentation that they have received the proper training.

## II. H<sub>2</sub>S safety equipment and Systems

Note: All H<sub>2</sub>S safety equipment and systems (if necessary) will be installed, tested, and operational when drilling reaches a depth of 500 feet above the three days prior to penetrating the first zone containing or reasonably expected to contain H<sub>2</sub>S.

### A. Well control equipment:

1. Choke manifold with a minimum of one remote choke.
2. Blind rams and pipe rams to accommodate all pipe sizes with properly sized closing unit.

### B. Protective equipment for essential personnel

1. Mark II Surniveair 30-minute units located in the doghouse and at briefing areas, as indicated on well site diagram.
- C. H<sub>2</sub>S detection and monitoring equipment:
1. Two portable H<sub>2</sub>S monitors positioned on location for best coverage and response. These units have warning lights and aquilbesirens when H<sub>2</sub>S levels of 10ppm.
- D. Visual warning systems:
1. Wind direction indicators as shown on well site diagram.
  2. Caution/Danger signs shall be posted on roads providing direct access to location. Signs will be painted a high visibility yellow with black lettering of sufficient size to be readable at a reasonable distance from the immediate location. Bilingual signs will be used when appropriate. See example attached.
- E. Mud program:
1. The mud programs has been designed to minimize the volume of H<sub>2</sub>S circulated to the surface. Proper mud weight, safe drilling practices and the use of H<sub>2</sub>S scavengers will minimize hazards when penetrating H<sub>2</sub>S bearing zones.
- F. Metallurgy:
1. All drill strings, casings, tubing, wellhead, blowout preventers, drilling spool, kill lines, choke manifold and lines, and valves shall be suitable for H<sub>2</sub>S service.
  2. All elastomers used for packing and seals shall be H<sub>2</sub>S trim.
- G. Communication:
1. Cellular telephone communications in company vehicles.
- H. Well testing:
1. Drill stem testing will be performed with a minimum number of personnel in the immediate vicinity which are necessary to safely and adequately conduct the test. The drill stem testing will be conducted during daylight hours and formation fluids will not be flowed to the surface. All drill stem testing operations conducted in an H<sub>2</sub>S environment will use the closed chamber method of testing.

UNITED STATES  
DEPARTMENT OF THE INTERIOR  
BUREAU OF LAND MANAGEMENT

FORM APPROVED  
OMB No. 1004-0137  
Expires: March 31, 2007

**SUNDRY NOTICES AND REPORTS ON WELLS**

Do not use this form for proposals to drill or to re-enter an abandoned well. Use Form 3160-3 (APD) for such proposals.

**SUBMIT IN TRIPLICATE- Other instructions on reverse side.**

1. Type of Well  
 Oil Well     Gas Well     Other

2. Name of Operator **Black Hills Gas Resources, Inc.**

3a. Address  
**P.O. Box 249 / 3200 N 1st St Bloomfield, NM 87413**

3b. Phone No. (include area code)  
**505 634-1111**

4. Location of Well (Footage, Sec., T., R., M., or Survey Description)  
**At surface 1,975' FNL 2,070' FWL SE/4 NW/4 Unit F**  
**AT proposed Prod. zone 1,975' FNL 2,070' FWL SE/4 NW/4 Unit F**

5. Lease Serial No.  
**Jicarilla 457 462**

6. If Indian, Allottee or Tribe Name  
**Jicarilla Apache Nation**

7. If Unit or CA/Agreement, Name and/or No.  
**N/A**

8. Well Name and No.  
**Jicarilla 462-22 122**

9. API Well No.

10. Field and Pool, or Exploratory Area  
**Basin Dakota**

11. County or Parish, State  
**Rio Arriba, NM**

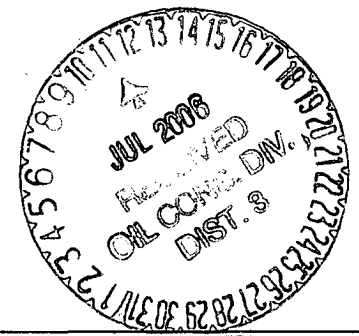
**12. CHECK APPROPRIATE BOX(ES) TO INDICATE NATURE OF NOTICE, REPORT, OR OTHER DATA**

TYPE OF SUBMISSION	TYPE OF ACTION			
<input checked="" type="checkbox"/> Notice of Intent	<input type="checkbox"/> Acidize	<input type="checkbox"/> Deepen	<input type="checkbox"/> Production (Start/Resume)	<input type="checkbox"/> Water Shut-Off
<input type="checkbox"/> Subsequent Report	<input type="checkbox"/> Alter Casing	<input type="checkbox"/> Fracture Treat	<input type="checkbox"/> Reclamation	<input type="checkbox"/> Well Integrity
<input type="checkbox"/> Final Abandonment Notice	<input type="checkbox"/> Casing Repair	<input type="checkbox"/> New Construction	<input type="checkbox"/> Recomplete	<input type="checkbox"/> Other _____
	<input type="checkbox"/> Change Plans	<input type="checkbox"/> Plug and Abandon	<input type="checkbox"/> Temporarily Abandon	
	<input type="checkbox"/> Convert to Injection	<input type="checkbox"/> Plug Back	<input type="checkbox"/> Water Disposal	

13. Describe Proposed or Completed Operation (clearly state all pertinent details, including estimated starting date of any proposed work and approximate duration thereof. If the proposal is to deepen directionally or recomplete horizontally, give subsurface locations and measured and true vertical depths of all pertinent markers and zones. Attach the Bond under which the work will be performed or provide the Bond No. on file with BLM/BIA. Required subsequent reports shall be filed within 30 days following completion of the involved operations. If the operation results in a multiple completion or recompletion in a new interval, a Form 3160-4 shall be filed once testing has been completed. Final Abandonment Notices shall be filed only after all requirements, including reclamation, have been completed, and the operator has determined that the site is ready for final inspection.)

On June 7, 2006, the Jicarilla 462-22 #22D was on-sited with Jicarilla Oil and Gas, BIA and Black Hills Gas Resources. Base on the on-site, the initial footage of 2,025' FNL 2,055'FWL were change to 1,975' FNL 2,070' FWL.

Please Find attachments of revised plats.



14. I hereby certify that the foregoing is true and correct

Name (Printed/Typed) **Daniel R. Manus** Title **Regulatory Technician**

Signature *[Signature]* Date **6/22/06**

**THIS SPACE FOR FEDERAL OR STATE OFFICE USE**

Approved by *[Signature]* Title **ATM** Date **7/18/06**

Conditions of approval, if any, are attached. Approval of this notice does not warrant or certify that the applicant holds legal or equitable title to those rights in the subject lease which would entitle the applicant to conduct operations thereon.

Office **FFO**

Title 18 U.S.C. Section 1001 and Title 43 U.S.C. Section 1212, make it a crime for any person knowingly and willfully to make to any department or agency of the United States any false, fictitious or fraudulent statements or representations as to any matter within its jurisdiction.

(Instructions on page 2)