

State of New Mexico
Energy, Minerals & Natural Resources Department

Form C-101

Revised October 18, 1999

Instructions on back

Submit to Appropriate District Office

State Lease - 6 Copies

Fee Lease - 5 Copies

OIL CONSERVATION DIVISION
2040 South Pacheco
Santa Fe, NM 87505

District I
PO Box 1980, Hobbs, NM 88241-1980
District II
811 S. 1st Street, Artesia, NM 88210-2834
District III
1000 Rio Brazos Rd., Aztec, NM 87410
District IV
2040 South Pacheco, Santa Fe, NM 87505

☐ AMENDED REPORT

APPLICATION FOR PERMIT TO DRILL, RE-ENTER, DEEPEN, PLUG BACK, OR ADD A ZONE

¹ Operator name and Address XTO Energy Inc. 2700 Farmington Ave., Bldg. K. Ste 1 Farmington, NM 87401		² OGRID Number 167067
⁴ Property Code 32687	⁵ Property Name Adair	³ API Number 30-0 45-31805
		⁶ Well No. #1

⁷ Surface Location

UL or lot no.	Section	Township	Range	Lot. Idn	Feet from the	North/South Line	Feet from the	East/West line	County
G	29	29N	10W		1375'	North	1520'	East	San Juan

⁸ Proposed Bottom Hole Location If Different From Surface

UL or lot no.	Section	Township	Range	Lot. Idn	Feet from the	North/South Line	Feet from the	East/West line	County
⁹ Proposed Pool 1 Basin Fruitland Coal					¹⁰ Proposed Pool 2				

¹¹ Work Type Code N	¹² Well Type Code G	¹³ Cable/Rotary Rotary	¹⁴ Lease Type Code Fee	¹⁵ Ground Level Elevation 5,504' Ground Level
¹⁶ Multiple N	¹⁷ Proposed Depth 1,975'	¹⁸ Formation Fruitland Coal	¹⁹ Contractor Not yet awarded	²⁰ Spud Date Winter, 2003

²¹ Proposed Casing and Cement Program

Hole Size	Casing Size	Casing weight/foot	Setting Depth	Sacks of Cement	Estimated TOC
8-3/4"	7"	20.0#, J-55, STC	200'	75 sx	Surface
6-1/4"	4-1/2"	10.5#, J-55, STC	1,975'	195 sx	Surface

²² Describe the proposed program. If this application is to DEEPEN or PLUG BACK give the data on the present productive zone and proposed new productive zone. Describe the blowout prevention program, if any. Use additional sheets if necessary.

Surface: 75 sx of Type III cement w/2% CC & 1/4#/sx cello (14.8 ppg, 1.39 cuft). Circ to surface.

Production: 125 sx Type III w/8% gel & 1/4#/sx cello (11.4 ppg & 3.03 cuft/sx) followed by 70 sx Type III cmt w/1% CC & 1/4#/sx cello (14.5 ppg & 1.41 cuft/sx). Circ cement to surface.

Remarks: Use 40% excess over volume calculated from op hole logs to determine final cement volume.

BOP diagram is attached.

²³ I hereby certify that the information given above is true and complete to the best of my knowledge and belief.

Signature:

Printed name: Jeffrey W. Patton

Title: Drilling Engineer

OIL CONSERVATION DIVISION

Approved by:

Title: DEPUTY OIL & GAS INSPECTOR, DIST. 10

Approval Date: JUL 29 2003 Expiration Date: JUL 29 2004

DISTRICT I
1625 N. French Dr., Hobbs, N.M. 88240

DISTRICT II
811 South First, Artesia, N.M. 88210

DISTRICT III
1000 Rio Brazos Rd., Aztec, N.M. 87410

DISTRICT IV
2040 South Pacheco, Santa Fe, NM 87505

State of New Mexico
Energy, Minerals & Natural Resources Department

Form C-102
Revised August 15, 2000

OIL CONSERVATION DIVISION
2040 South Pacheco
Santa Fe, NM 87505

Submit to Appropriate District Office
State Lease - 4 Copies
Fee Lease - 3 Copies

☐ AMENDED REPORT

WELL LOCATION AND ACREAGE DEDICATION PLAT

¹ API Number 30-045-31805		² Pool Code 71629	³ Pool Name BASIN FRUITLAND COAL
⁴ Property Code 32687	⁵ Property Name ADAIR		⁶ Well Number 1
⁷ GRID No. 167067	⁸ Operator Name XTO ENERGY INC.		⁹ Elevation 5504'

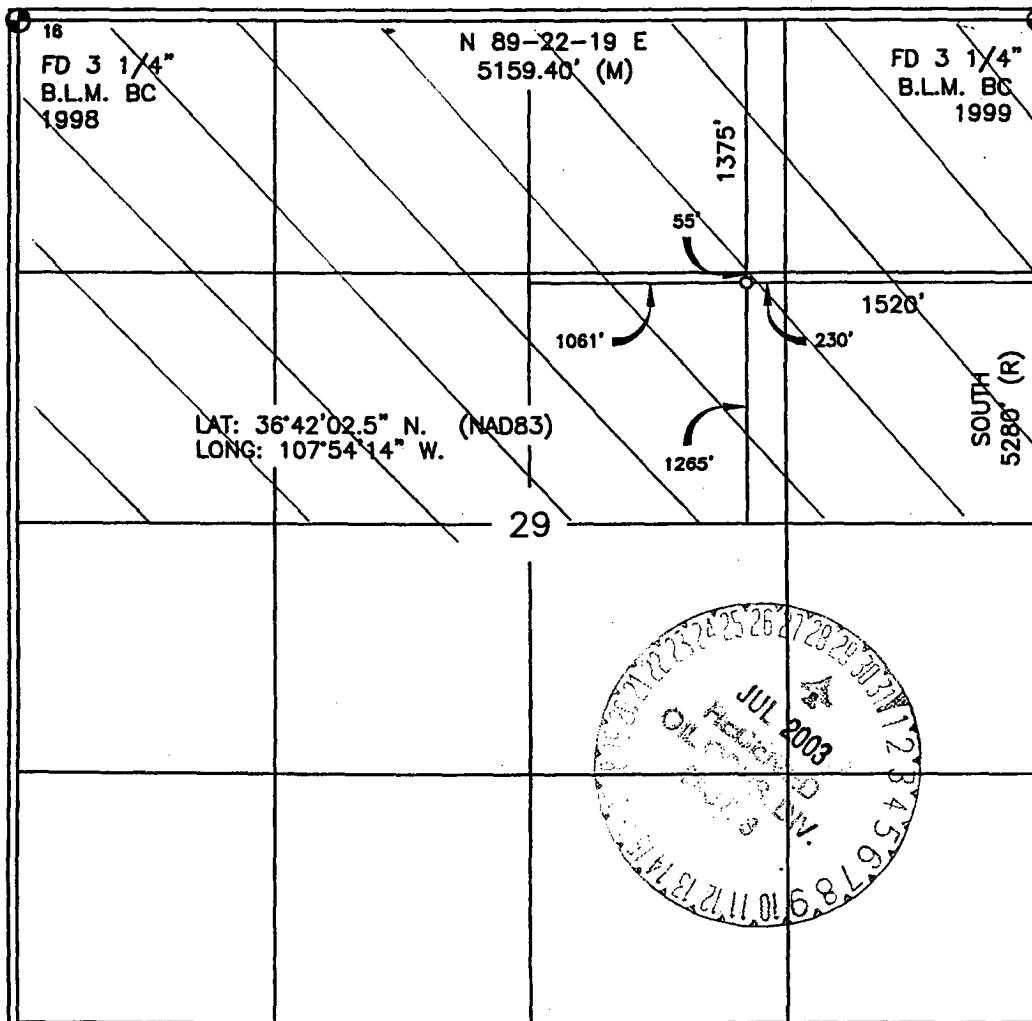
¹⁰ Surface Location

UL or lot no.	Section	Township	Range	Lot idn	Feet from the	North/South line	Feet from the	East/West line	County
G	29	29-N	10-W		1375'	NORTH	1520'	EAST	SAN JUAN

¹¹ Bottom Hole Location If Different From Surface

UL or lot no.	Section	Township	Range	Lot idn	Feet from the	North/South line	Feet from the	East/West line	County
¹² Dedicated Acres 320		¹³ Joint or Infill N/Z		¹⁴ Consolidation Code		¹⁵ Order No.			

NO ALLOWABLE WILL BE ASSIGNED TO THIS COMPLETION UNTIL ALL INTERESTS HAVE BEEN CONSOLIDATED
OR A NON-STANDARD UNIT HAS BEEN APPROVED BY THE DIVISION



17 OPERATOR CERTIFICATION

I hereby certify that the information contained herein
is true and complete to the best of my knowledge and
belief

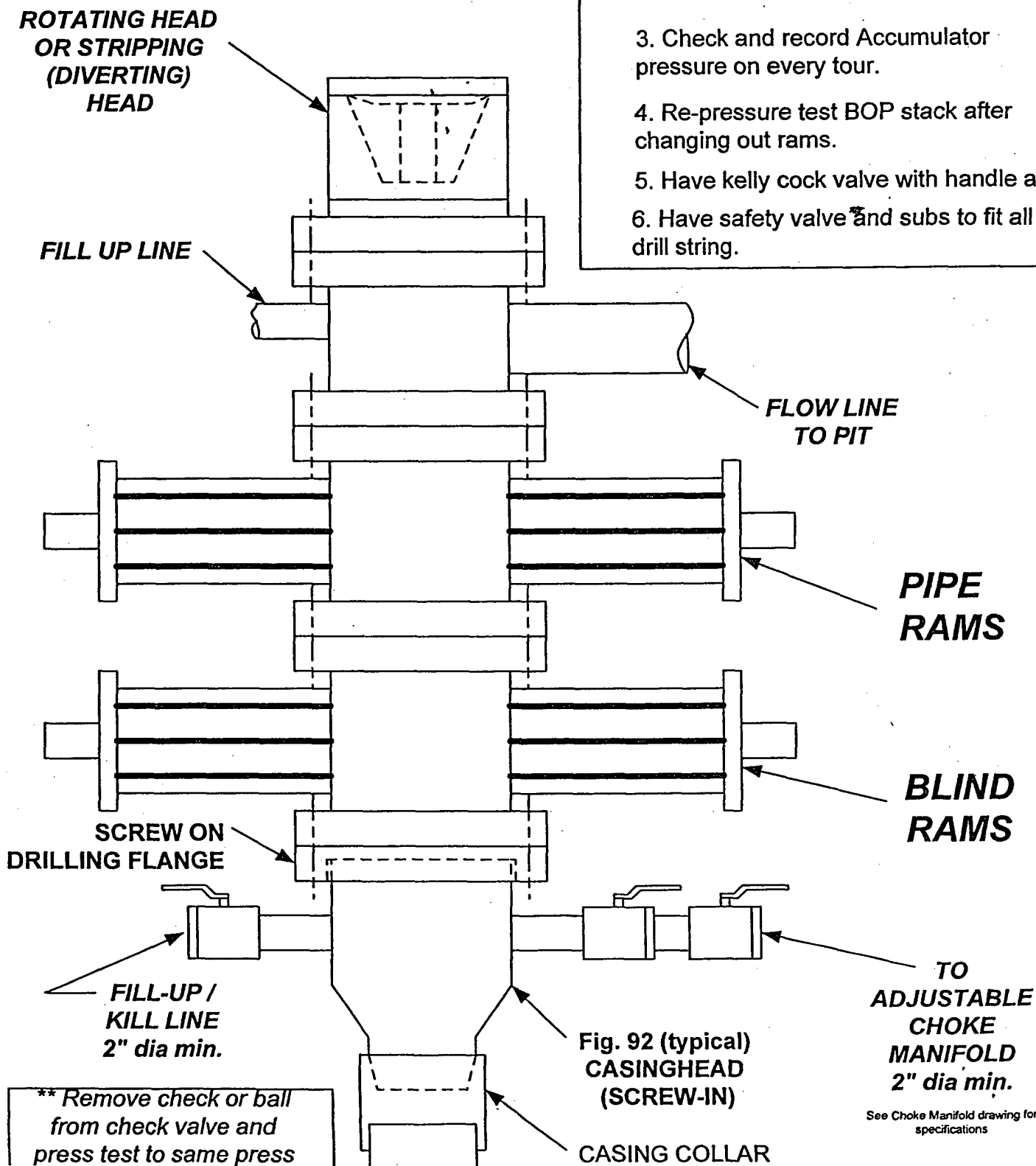
Signature Jeffrey W. Patton
Printed Name JEFFREY W. PATTON
Title DRILLING ENGINEER
Date 7-25-03

18 SURVEYOR CERTIFICATION

I hereby certify that the well location shown on this plat
was plotted from field notes of actual surveys made by
me or under my supervision, and that the same is true
and correct to the best of my belief.

2-1
Date of Survey 7-25-03
Signature and Seal DAVID A. JOHNSON
14827
Certificate Number

BOP SCHEMATIC FOR DRILLING OPERATIONS CLASS 1 (2M) NORMAL PRESSURE



1. Test BOP after installation:

Pressure test BOP to 200-300
psig (low pressure) for 5 min.

Test BOP to Working Press or
to 70% internal yield of surf csg
(10 min).

2. Test operation of (both) rams on every trip.

3. Check and record Accumulator pressure on every tour.

4. Re-pressure test BOP stack after changing out rams.

5. Have kelly cock valve with handle available.

6. Have safety valve and subs to fit all sizes of drill string.

**TESTING
PROCEDURE**

**** Remove check or ball
from check valve and
press test to same press**

See Choke Manifold drawing for
specifications