

UNITED STATES
DEPARTMENT OF THE INTERIOR
BUREAU OF LAND MANAGEMENT

APPLICATION FOR PERMIT TO DRILL, DEEPEN, OR PLUG BACK

RECEIVED

1a. Type of Work DRILL	5. Lease Number NMSF-078424 Unit Reporting Number FC-891001650C PC-891001650B
1b. Type of Well GAS	6. If Indian, All. or Tribe
2. Operator BURLINGTON RESOURCES OIL & GAS COMPANY LP	7. Unit Agreement Name San Juan 29-7 Unit
3. Address & Phone No. of Operator PO Box 4289, Farmington, NM 87499 (505) 326-9700	8. Farm or Lease Name San Juan 29-7 Unit 9. Well Number 186
4. Location of Well 895' FNL, 715' FEL Latitude 36° 42.58, Longitude 107° 34.09	10. Field, Pool, Wildcat Basin Fruitland Coal/ Blanco Pictured Cliffs 11. Sec., Twn, Rge, Mer. (NMPM) A Sec. 21, T-29-N, R-7-W API # 30-039- 27425
14. Distance in Miles from Nearest Town 15 miles from Blanco	12. County Rio Arriba
15. Distance from Proposed Location to Nearest Property or Lease Line 715'	13. State NM
16. Acres in Lease	17. Acres Assigned to Well FC - 320 E/2 PC - 160
18. Distance from Proposed Location to Nearest Well, Drlg, Compl, or Applied for on this Lease 850'	
19. Proposed Depth 3690'	20. Rotary or Cable Tools Rotary
21. Elevations (DF, FT, GR, Etc.) 6635' GR	22. Approx. Date Work will Start
23. Proposed Casing and Cementing Program See Operations Plan attached	
24. Authorized by: <u>Peggy Case</u> Regulatory/Compliance Supervisor	4-7-03 Date

PERMIT NO. _____

APPROVAL DATE _____

APPROVED BY /s/ David J. Markiewicz

TITLE _____

DATE AUG - 4 2003

Archaeological Report to be submitted

Threatened and Endangered Species Report to be submitted

NOTE: This format is issued in lieu of U.S. BLM Form 3160-3

Title 18 U.S.C. Section 1001, makes it a crime for any person knowingly and willfully to make to any department or agency of the United States any false, fictitious or fraudulent statements or presentations as to any matter within its jurisdiction.

This action is subject to technical and procedural review pursuant to 43 CFR 3165.3 and appeal pursuant to 43 CFR 3165.4

NMOC

DRILLING OPERATIONS AUTHORIZED ARE
SUBJECT TO COMPLIANCE WITH ATTACHED
"GENERAL REQUIREMENTS".

District II
PO Drawer DD, Artesia, NM 88211-0719OIL CONSERVATION DIVISION
PO Box 2088
Santa Fe, NM 87504-2088Instructions on back
Submit to Appropriate District Office
State Lease - 4 Copies
Fee Lease - 3 CopiesDistrict III
1000 Rio Brazos Rd., Aztec, NM 87410District IV
PO Box 2088, Santa Fe, NM 87504-2088☐ AMENDED REPORT

WELL LOCATION AND ACREAGE DEDICATION PLAT

API Number 30-039- 27425		Pool Code 72400 / 71629	Pool Name Blanco Pictured Cliffs / Basin Fruitland Coal
Property Code 7465	Property Name SAN JUAN 29-7 UNIT		Well Number 186
GRID No. 14538	Operator Name BURLINGTON RESOURCES OIL & GAS COMPANY, LP		Elevation 6635'

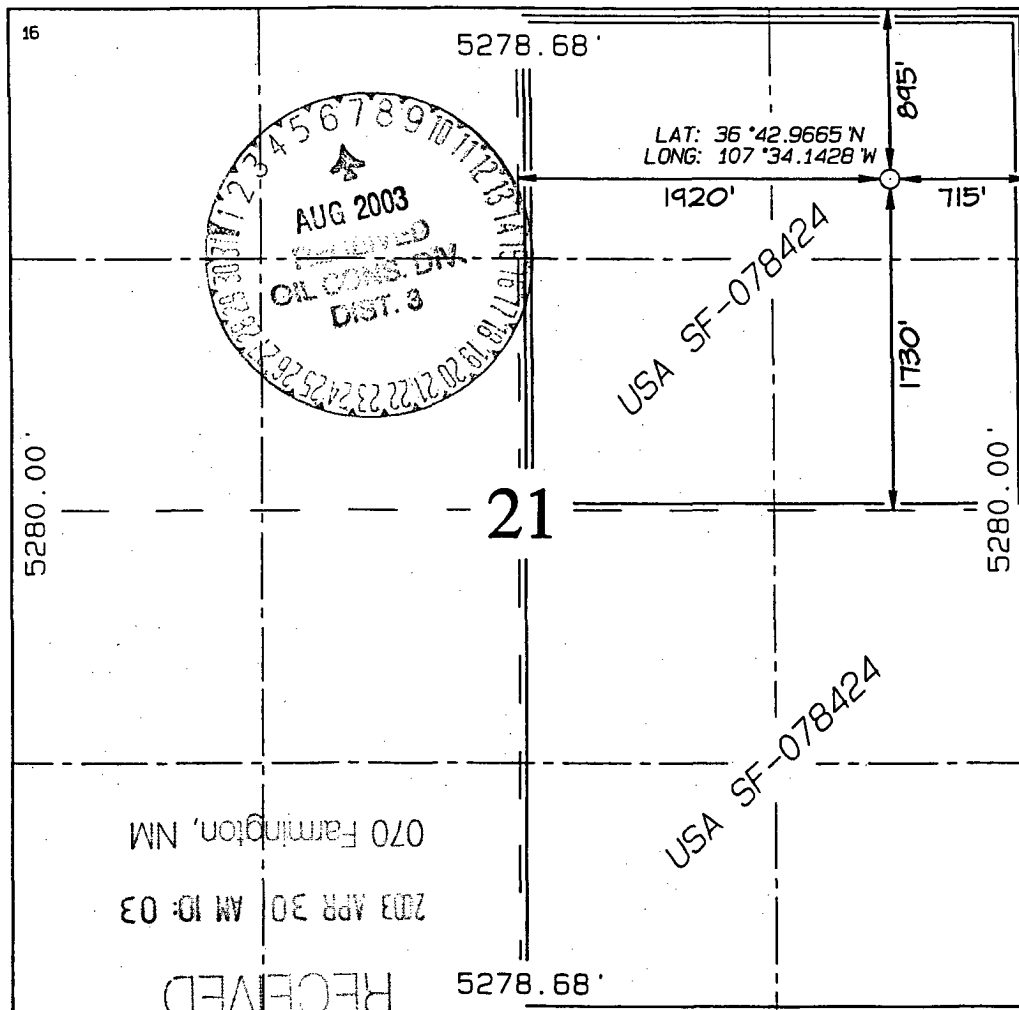
10 Surface Location

UL or lot no.	Section	Township	Range	Lot Idn	Feet from the	North/South line	Feet from the	East/West line	County
A	21	29N	7W		895	NORTH	715	EAST	RIO ARriba

11 Bottom Hole Location If Different From Surface

UL or lot no.	Section	Township	Range	Lot Idn	Feet from the	North/South line	Feet from the	East/West line	County

12 Dedicated Acres FTC - E/320 PC - 160	13 Joint or Infill	14 Consolidation Code	15 Order No.
---	--------------------	-----------------------	--------------

NO ALLOWABLE WILL BE ASSIGNED TO THIS COMPLETION UNTIL ALL INTERESTS HAVE BEEN CONSOLIDATED
OR A NON-STANDARD UNIT HAS BEEN APPROVED BY THE DIVISION

17 OPERATOR CERTIFICATION

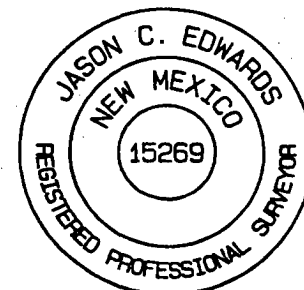
I hereby certify that the information
contained herein is true and complete
to the best of my knowledge and beliefSignature
*Peggy Cole*Printed Name
Peggy ColeRegulatory Supervisor
TitleDate
4-7-03

18 SURVEYOR CERTIFICATION

I hereby certify that the well location
shown on this plat was plotted from field
notes of actual surveys made by me or under
my supervision, and that the same is true
and correct to the best of my belief.

Survey Date: JANUARY 14, 2003

Signature and Seal of Professional Surveyor

JASON C. EDWARDS
Certificate Number 15269

OPERATIONS PLAN

Well Name: San Juan 29-7 Unit #186
Location: 895' FNL, 715' FEL, Section 21, T-29-N, R-7-W
Rio Arriba County, New Mexico
Latitude 36° 42.58, Longitude 107° 34.09
Formation: Basin Fruitland Coal/Blanco Pictured Cliffs
Elevation: 6635' GL

Formation:	Top	Bottom	Contents
Surface	San Jose	2447'	
Ojo Alamo	2447'	2631'	aquifer
Kirtland	2631'	3137'	gas
Fruitland	3137'	3437'	gas
Pictured Cliffs	3437'	3627'	gas
Lewis Shale Marker	3627'		
Total Depth	3690'		

Logging Program:

Open hole - Array Induction - Surface to TD, CNL-CDL - 2625' to TD
Mud log - None

Coring Program: None

Mud Program:

Interval	Type	Weight	Vis.	Fluid Loss
0- 120'	Spud	8.4-9.0	40-50	no control
120-3690'	FW	8.4-9.0	32-45	no control

Casing Program (as listed, equivalent, or better):

Hole Size	Depth Interval	Csg. Size	Wt.	Grade
9 7/8"	0 - 120'	7"	20.0#	J-55
6 1/4"	0 - 3690'	4 1/2"	10.5#	K-55

Tubing Program:

0' -3690'	2 3/8"	4.7#	J-55
-----------	--------	------	------

Float Equipment: 7" surface casing - saw tooth guide shoe.
Centralizers will be run in accordance with Onshore Order #2.

4 1/2" production casing - float shoe on bottom. Standard centralizers run every other joint above shoe to the base of the Ojo Alamo @ 2631'. Two turbolizing type centralizers - one below and one into the base of the Ojo Alamo @ 2631'. Standard centralizers thereafter every fourth joint up to the base of the surface pipe.

Wellhead Equipment: 7" x 4 1/2" x 2 3/8" 2000 psi screw on independent wellhead.

Cementing:

7" surface casing - cement with 23 sx Class A, B Portland Type I, II cement (32 cu.ft. of slurry, bring cement to surface) or equivalent. Wait on cement for 24 hours for pre-set holes or 8 hrs for conventionally set holes before pressure testing or drilling out from under surface. Test casing to 600 psi for 30 minutes.

4 1/2" production casing - Lead w/208 sx Premium Lite cement w/3% calcium chloride, 1/4 pps Flocele, 5 pps LCM-1, 0.4% FL-52, 0.4% SMS. Tail w/90 sx Type III cement w/1% calcium chloride, 1/4 pps Flocele, and 0.2% FL-52 (568 cu.ft. of slurry, 50% excess to circulate to surface).

Note: If open hole logs are run, cement volumes will be based on 25% excess over caliper volumes.

BOP and tests:

Surface to TD - 11" 2000 psi (minimum double gate BOP stack (Reference Figure #1)). Prior to drilling out surface casing, test rams to 600 psi/30 min.

Completion - 6" 2000 psi (minimum) double gate BOP stack (Reference Figure #2). Prior to completion operations, test rams and casing to 2000 psi/15 min.

From surface to TD - choke manifold (Reference Figure #3).

Pipe rams will be actuated to least once each day and blind rams actuated once each trip to test proper functioning. An upper kelly cock valve with handle and drill string safety valves to fit each drill string will be maintained and available on the rig floor.

Additional information:

- * The Fruitland Coal and Pictured Cliffs formation will be completed and commingled.
- * Anticipated pore pressure for the Pictured Cliffs is 500 psi.
- * This gas is dedicated.
- * The east half of Section 21 is dedicated to the Fruitland Coal and the northeast quarter of Section 21 is dedicated to the Pictured Cliffs.


Drilling Engineer

4/28/03
Date