

UNITED STATES
DEPARTMENT OF THE INTERIOR
BUREAU OF LAND MANAGEMENT

FORM APPROVED
OMB No. 1004-0135
Expires November 30, 2000

SUNDRY NOTICES AND REPORTS ON WELLS

Do not use this form for proposals to drill or to re-enter an
Abandoned well. Use Form 3160-3 (APD) for such proposals.

RECEIVED

5. Lease Serial No.

SF 078903

6. If Indian, Allottee or tribe Name

7. If Unit or CA/Agreement, Name and/or No.

8. Well Name and No.

GALLEGOS CANYON UNIT 244

9. API Well No.

30-045-11690

10. Field and Pool, or Exploratory Area

Basin Fruitland Coal & Kutz PC, WEST

11. County or Parish, State

SAN JUAN

SUBMIT IN TRIPLICATE - Other instructions on reverse side

1. Type of Well



Oil Well



Gas Well



Other

2. Name of Operator

BP AMERICA PRODUCTION COMPANY

3a. Address

P.O. BOX 3092 HOUSTON, TX 77253-3092

3b. Phone No. (include area code)

281-366-4881

4. Location of Well (Footage, Sec., T., R., M., or Survey Description)

SECTION 36 T 28N R 12W 1850' FSL & 2510' FEL

12. CHECK APPROPRIATE BOX(ES) TO INDICATE NATURE OR NOTICE, REPORT, OR OTHER DATA

TYPE OF SUBMISSION



Notice of Intent



Subsequent Report



Final Abandonment Notice



Acidize



Alter Casing



Casing Repair



Change Plans



Convert to Injection



Deepen



Fracture Treat



New Construction



Plug and Abandon



Plug Back

TYPE OF ACTION



Production (Start/Resume)



Reclamation



Recomplete



Water Disposal



Water shut-Off



Well Integrity



Other

13. Describe Proposed or Completed Operation (clearly state all pertinent details, including estimated starting date of any proposed work and approximate duration thereof. If the proposal is to deepen directionally or recomplete horizontally, give subsurface locations and measured and true vertical depths of all pertinent markers and zones. Attach the Bond under which the work will be performed or provide the Bond No. on file with BLM/BIA. Required subsequent reports shall be filed within 30 days following completion of the involved operations. If the operation results in a multiple completion or recompletion in a new interval, a Form 3160-4 shall be filed once testing has been completed. Final Abandonment Notices shall be filed only after all requirements, including reclamation, have been completed, and the operator has determined that the site is ready for final inspection.

BP America Production Company requests permission to plug back from the Dakota and recomplete to commingle the Kutz Pictured Cliffs, West Pool and Basin Fruitland Coal Pool as per the attached procedure.

The Basin Fruitland Coal (71629) & Kutz Picture Cliffs, West (79680) Pools are Pre-Approved for Down hole Commingling per NMOCD CASE NO.12520, ORDER NO. R-11567 effective 04/26/2001. Although the interest owners are not identical between these two pools, this same order established approval for subsequent applications for the down hole commingling of production in wellbores within the Gallegos Canyon Unit without notice to the unit interest owners, therefore, no additional notification is required prior to down hole commingling approval.

Production is proposed to be allocated based on a fixed percentage using the actual production rate from two offset wells; the Gallegos Canyon Unit #55 & Gallegos Canyon Unit #56. Both wells produce from the Basin Fruitland Coal @ 24% and the Pictured Cliffs @ 76%. That production percentage will serve as a base for production from the above mentioned well.

Commingling Production Downhole in the subject well from the proposed pools will not reduce the value of the total remaining production.

14. I hereby certify that the foregoing is true and correct.

Name (Printed/typed)

CHERRY HLAVA

Title REGULATORY ANALYST

Signature

Cherry Hlava

Date 7/10/2003

THIS SPACE FOR FEDERAL OR STATE OFFICE USE

CONDITIONS OF APPROVAL

Adhere to previously issued stipulations.

Approved by

/s/ Jim Lovato

Title

Date

JUL 24 2003

Conditions of approval, if any, are attached. Approval of this notice does not warrant or Certify that the applicant holds legal or equitable title to those rights in the subject lease which would entitle the applicant to conduct operations thereon.

Office

Title 18 U.S.C. Section 1001 and Title 43 U.S.C. Section 1212, make it a crime for any person knowingly and willfully to make to any department or agency of the United States any false, fictitious or fraudulent statements or representations as to any matter within its jurisdiction.

NMOCD

GCU Well Work Procedure

Well Name: GCU 244

Date: 6/26/03

Objective:

Plug back from Dakota and recompleate to commingled Fruitland Coal/Pictured Cliffs.

Pertinent Information:

Location: 1850' FSL & 2510' FEL
Sec. 36, T28N, 12W

County San Juan
State: New Mexico
Meter No. 75386

Horizon: Fruitland Coal & PC
API #: 30-045-11690
Engr: John Papageorge
Phone: W (281) 366-5721
H (713) 464-5053

Note: Charge invoices associated with steps #1 through #5 to DRA WBS element of project.

1. Check anchors. MIRUSU.
2. Blow down wellhead, kill if necessary. ND tree, NU and pressure test BOP.
3. TOH with 2-3/8" tubing.
4. PXA Dakota. RIH with CIBP on tubing and set at approximately 6200'. Load well with KCl water. Pressure test casing to 300 psi.
5. Spot 150' cmt plug on top of CIBP. Spot 150' balanced cement plugs in casing across Gallup from 5300' to 5450' and Mesa Verde Cliffhouse from 2650' to 2800'.
6. Run GR/CCL. Correlate to Schlumberger Induction Log dated 4/5/66.
7. Perforate the following intervals using 3-1/8" HSC, 120 degree phasing:
Fruitland Coal - xxxx-xxxx' (x spf)
Pictured Cliffs - xxxx-xxxx' (x spf)
8. RU frac equipment and install WH isolation tool. Fracture stimulate down casing according to schedule 'A'.
9. Immediately flow back frac load on 1/4" choke for 8 hours then open to 1/2" choke until well loads up or until a sufficient test is achieved.
10. Clean out to PBTD.
11. TIH with 2 3/8" tubing. Land one joint below PC/FC at approximately xxxx'. ND BOP. NU tree.
12. Run pump and rods. RD MO SU.
13. Hook up to pumping unit. Pump back load water and test.

GCU #244

Wellbore Diagram

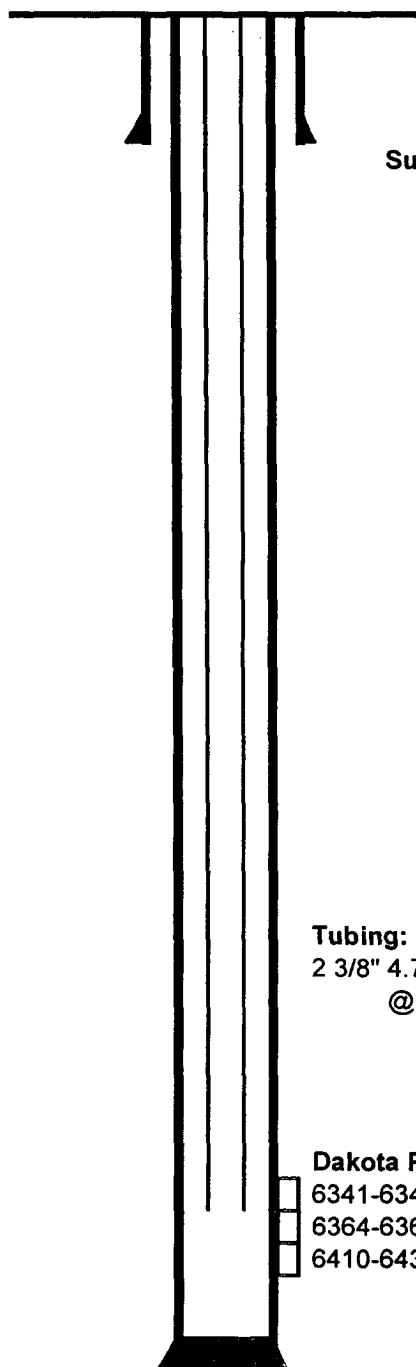
6/26/03

1850' FSL X 2510' FEL

Sec. 36, T28N, R12W

San Juan Co., NM

Current Configuration



GL: 6033'
KB: 6047'

Surface Csg: 8 5/8", 24#
@ 387'

DV @ 1949'
good circ, no cmt to surf.

DV @ 4660'
good circ, no cmt to surf.

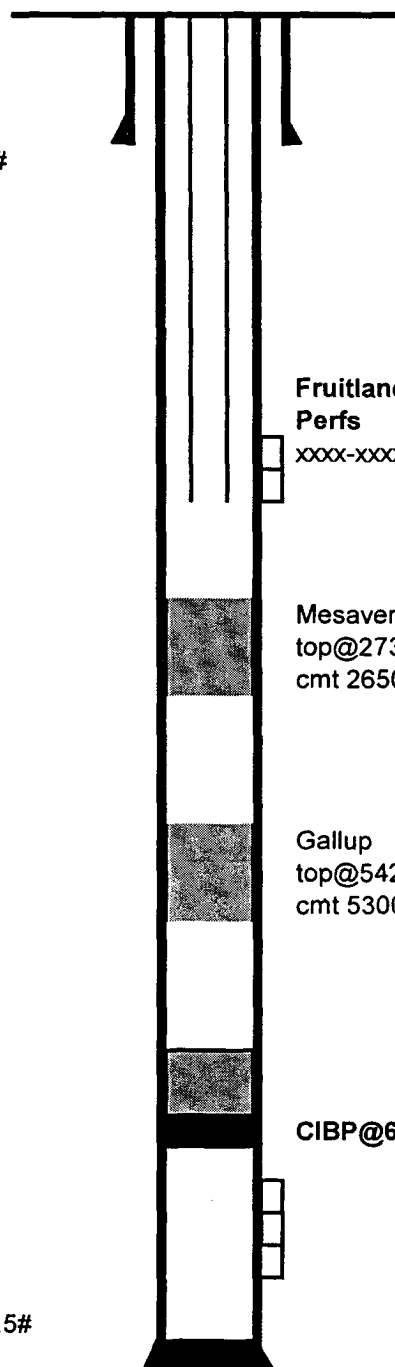
Tubing:
2 3/8" 4.7# J-55
@ 6375'

Dakota Perforations:
6341-6346'
6364-6369'
6410-6435'

Prod Csg: 4-1/2", 10.5#
@ 6515'

PBTD: 6481'
TD: 6520'

Proposed



Fruitland Coal & PC
Perfs
XXXX-XXXX

Mesaverde
top@2730'
cmt 2650-2800'

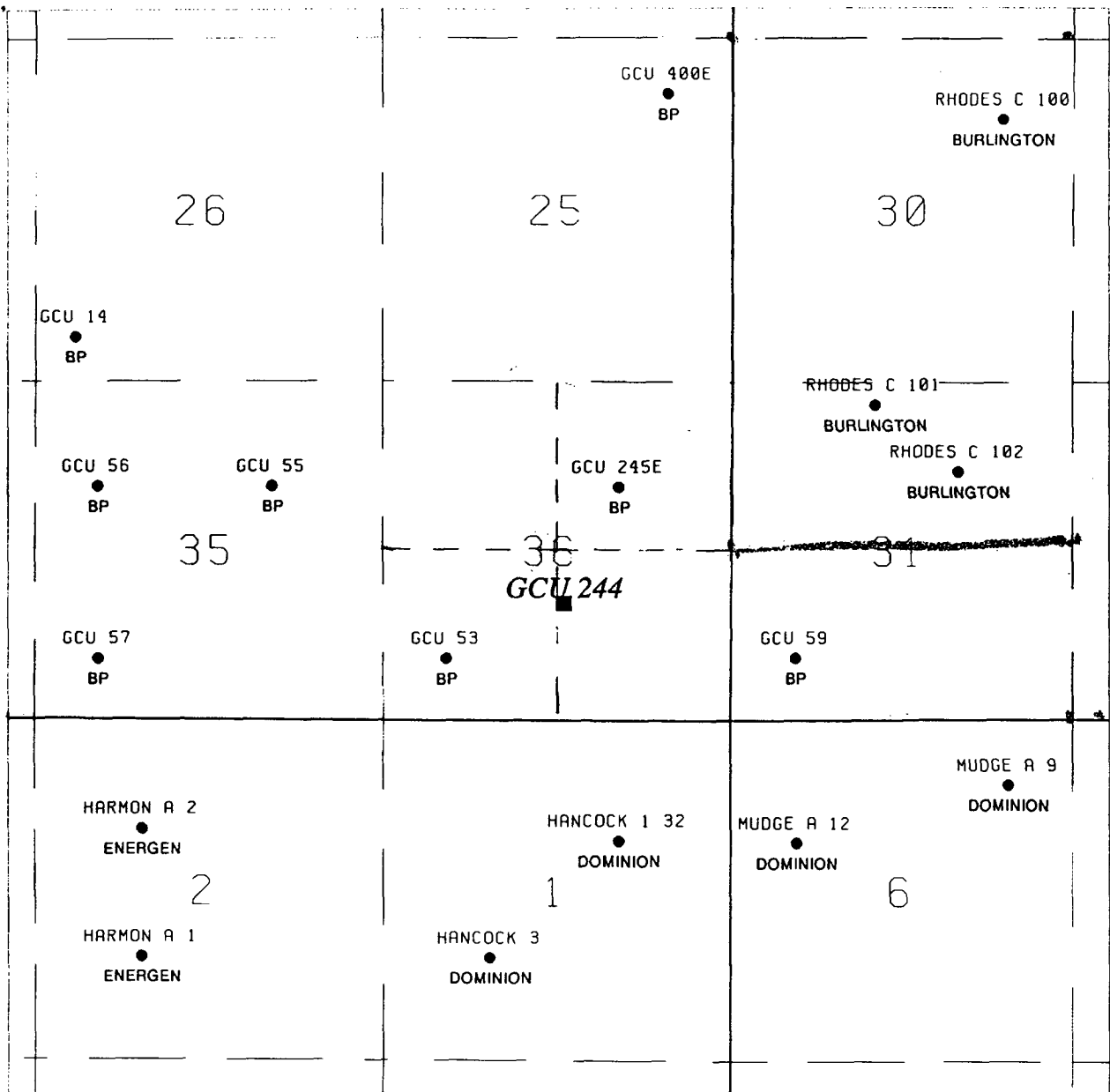
Gallup
top@5422'
cmt 5300-5450'

CIBP@6200'

2040 South Pacheco, Santa Fe, NM 87505

Certificate Number

1950'S 200 E 17



BP America Production Co. Houston, TX			
T28N R12W Sec. 36 GCU 244 Fruitland Coal Wells			
SCALE	DRAWN M. J. RITZ	DATE 2-JUL-2003	
DATE			

District I
1625 N. French Dr., Hobbs, NM 88240

District II
811 South First, Artesia, NM 88210

District III
1000 Rio Brazos Rd., Aztec, NM 87410

District IV
2040 South Pacheco, Santa Fe, NM 87505

State of New Mexico
Energy, Minerals & Natural Resources Department

Form C-102
Revised August 15, 2000

OIL CONSERVATION DIVISION
2040 South Pacheco
Santa Fe, NM 87505

Submit to Appropriate District Office
State Lease - 4 Copies
Fee Lease - 3 Copies

☐ AMENDED REPORT

WELL LOCATION AND ACREAGE DEDICATION PLAT

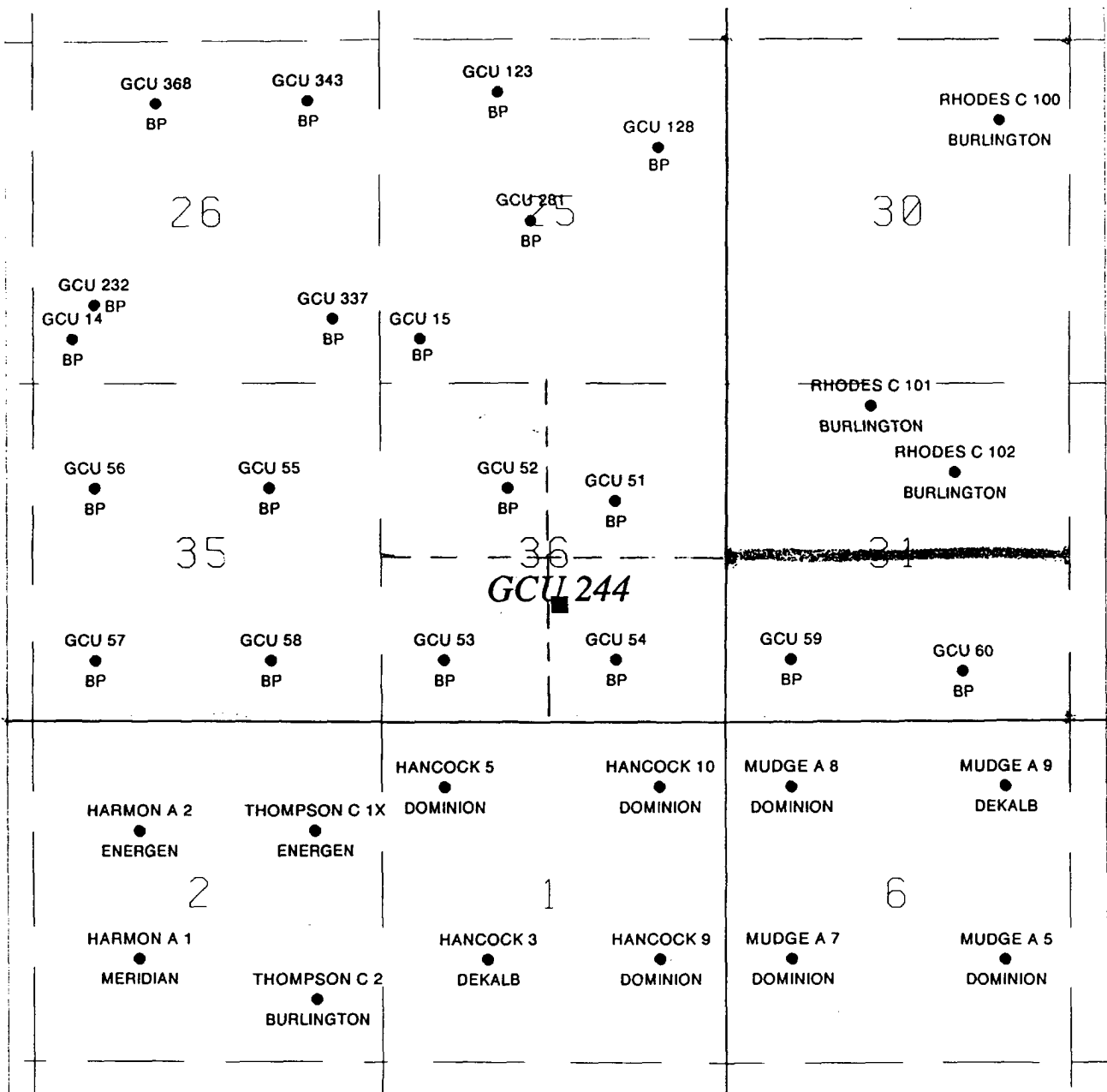
¹ API Number 30-045-11690	² Pool Code 79680	³ Pool Name Kutz Pictured Cliffs, West
⁴ Property Code 000570	⁵ Property Name Gallegos Canyon Unit	⁶ Well Number 244
⁷ OGRID No. 000778	⁸ Operator Name BP America Production Company	⁹ Elevation 6033' GL

¹⁰ Surface Location									
UL or lot no. Unit J	Section 36	Township 28N	Range 12W	Lot Idn	Feet from the 1850'	North/South line South	Feet from the 2510'	East/West line East	County San Juan

¹¹ Bottom Hole Location If Different From Surface									
UL or lot no.	Section	Township	Range	Lot Idn	Feet from the	North/South line	Feet from the	East/West line	County
¹² Dedicated Acres 160 Ac.	¹³ Joint or Infill	¹⁴ Consolidation Code	¹⁵ Order No.						

NO ALLOWABLE WILL BE ASSIGNED TO THIS COMPLETION UNTIL ALL INTERESTS HAVE BEEN CONSOLIDATED OR A NON-STANDARD UNIT HAS BEEN APPROVED BY THE DIVISION

¹⁶ 	¹⁷ OPERATOR CERTIFICATION I hereby certify that the information contained herein is true and complete to the best of my knowledge and belief. Signature Printed Name Cherry Hlava Title Regulatory Analyst Date 07/01/2003	
	¹⁸ SURVEYOR CERTIFICATION I hereby certify that the well location shown on this plat was plotted from field notes of actual surveys made by me or under my supervision, and that the same is true and correct to the best of my belief. 3-7-1966 Date of Survey Signature and Seal of Professional Surveyor:	
	ORIGINAL ON FILE Certificate Number 1463	



BP America Production Co.
Houston, TX

T28N R12W Sec. 36

GCU 244

Pictured Cliffs Wells

SCALE	DRAWN M. J. RITZ	DATE 2-JUL-2003
ORIGIN		

Conditions of Approval:

Notice of Intent: to plug back from the Dakota and recomplete and commingle the Kutz PC West Pool and the Basin Fruitland Coal Pool

**BP AMERICA PRODUCTION CO
Gallegos Canyon Unit # 244
1850 FSL & 2510 FEL
Sec 36., T28N., R12W.,
API # 3004511690**

- 1. It is recommended that the proposed Mesaverde plug to moved to the top of the Cliff House formation 3385' to 3535'.**

United States Dept. of the Interior

United States Dept. of Agriculture



**Bureau of Land Management
Farmington Field Office
1235 La Plata Highway, Suite A
Farmington, New Mexico 87401
(505) 599-8900**



**Carson National Forest
Jicarilla Ranger District
664 E. Broadway
Bloomfield, NM 87413
(505) 632-2956**

July 8, 2003

To All Oil and Gas Companies Doing Business on the Farmington Field Office and Jicarilla Ranger District:

Dear Sir or Madame,

Please be advised that the Farmington Field Office as well as the Carson National Forest have gone into Level III Fire Restrictions effective July 8, 2003. Please refer to the attachment on rules concerning the fire restrictions in place. In brief, this prohibits campfires and smoking is restricted to inside vehicles or at well sites.

For oil and gas operations, we are requiring that companies adhere to the following:

- Smoking only inside vehicles or at well sites.
- Prior notification to the Farmington Field Office or the Jicarilla Ranger District is required for drilling and flaring activities..
- Operations such as road grading, rock crushing, road surfacing, and other operations occurring on mineral soil may continue without approval by the two federal offices.
- 80 barrels of fresh water will be available for fire suppression and a minimum of 300 feet of 1 ½ inch hose with nozzle will available at work locations, such as flaring and drilling operations.
- Fire extinguishers, hand tools and a designated lookout will be used for welding, cutting torch and dozer operations.
- Chainsaws will be inspected prior to use. For inspections please stop by the Jicarilla Ranger Station located at 664 E. Broadway, Bloomfield, NM.

We also need to remind you that the federal government pursues fire suppression costs for all human-caused fires. The operator is responsible for the cost of suppressing all fires caused by their operations, and for all damage to any property of the government or third parties. The government reserves the right to participate in extinguishing any fires caused by the operator, and the operator shall reimburse the government for the cost of all suppression activities ordered by the government.

Please distribute this message as quickly as possible throughout your company and to your sub-contractors.
Thank-you for your cooperation.

Steve Henke
Field Office Manager

Mark S. Catron
District Ranger