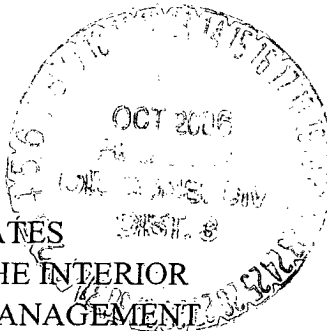


UNITED STATES
DEPARTMENT OF THE INTERIOR
BUREAU OF LAND MANAGEMENT
APPLICATION FOR PERMIT TO DRILL OR REENTER



2006 JUN 22
FORM APPROVED
OMB-NO: F004-0136
Expires: January 31, 2004

RECEIVED
5. Lease Serial No.
070 FARMINGTON NM

SF-075214

6. If Indian, Allottee or Tribe Name

7. If Unit or CA Agreement, Name and No.

8. Lease Name and Well No.
Tiger #19T

9. API Well No.

30-045-33807

10. Field and Pool, or Exploratory

Basin Fruitland Coal 71629

11. Sec., T., R., M., or Blk. And Survey or Area

O, Sec 27, T-30-N, R-13-W

12. County or Parish

San Juan

13. State

New Mexico

1a. Type of Work ☒ DRILL ☐ REENTER

1b. Type of Well ☐ Oil Well ☒ Gas Well ☐ Other ☐ Single Zone ☐ Multiple Zone

2. Name of Operator

Pogo Producing Company 17891

3a. 300 N. Marienfeld, Suite 600

Midland, TX 79701

3b. Phone No. (include area code)

(432) 685-8143

4. Location of well (Report location clearly and in accordance with any State requirements. *)

At surface

1125' FSL & 1795' FEL

At proposed prod. zone

14. DISTANCE IN MILES AND DIRECTION FROM NEAREST TOWN OR POST OFFICE*

30th Street to Hood Mesa Trail .2 mile, turn west Coyote Trail .7 mile

15. Distance from proposed*

location to nearest
property or lease line, ft.

(Also to nearest drlg unit line, if any)

165'

16. No. of Acres in lease

2560

17. Spacing Unit dedicated to this well

E/2 320 acres

18. Distance from proposed location*

to nearest well, drilling, completed,
applied for, on this lease, ft.

0.2 mile

19. Proposed Depth

+/- 1835'

20. BLM/ BIA Bond No. on file

NM 2125

21. Elevations (Show whether DF, RT, GR, etc.)

5724'

22. Approximate date work will start*

1-Aug-06

23. Estimated Duration

10 Days

24. Attachments

The following, completed in accordance with the requirements of Onshore Oil and Gas Order No. 1 shall be attached to this form:

1. Well plat certified by a registered surveyor.

2. A Drilling Plan.

3. A Surface Use Plan (if the location is on National Forest System Lands, the
SUPO shall be filed with the appropriate Forest Service Office).

4. Bond to cover the operations unless covered by existing bond on file(see
item 20 above).

5. Operator certification.

6. Such other site specific information and/ or plans as may be required by the a
authorized officer.

25. Signature

Name (Printed/ Typed)

Date

Title

Bradley Salzman

6-7-06

Drilling Consultant

Approved By (Signature)

Name (Printed/ Typed)

Date

Title

Office

10/13/06

Application approval does not warrant or certify that the applicant holds legal or equitable title to those rights in the subject lease which would entitle the applicant to co
operations thereon.

Conditions of approval, if any, are attached.

Title 18 U.S.C. Section 1001 and Title 43 U.S.C. Section 1212, make it a crime for any person knowingly and willfully to make to any department or agency of the United
States any false, fictitious or fraudulent statements or representations as to any matter within its jurisdiction.

* (Instructions on reverse)

File pit application prior to
NMOC start of operations

State of New Mexico
Energy, Minerals & Mining Resources Department

Form C - 102

OIL CONSERVATION DIVISION
2040 South Pacheco
Santa Fe, NM 87505

☐ AMENDED REPORT

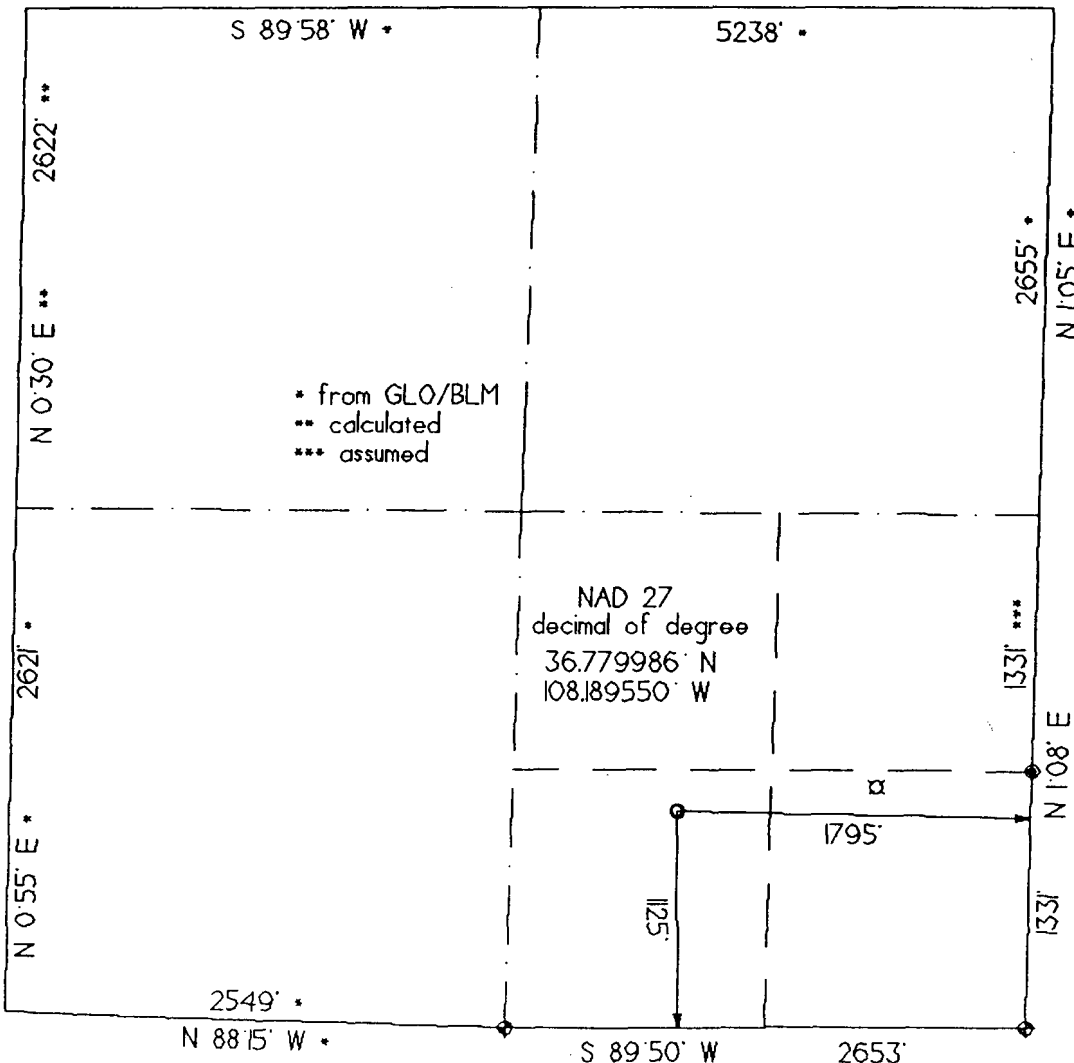
WELL LOCATION AND ACREAGE DEDICATION PLAT

APA Number 30-045-33207		Pool Code 71629	Pool Name Basin Fruitland Coal
Property Code 300785	Property Name TIGER		Well Number 19 T
OGRID No. 17891	Operator Name POGO PRODUCING CO.		Elevation 5724'

Surface Location									
UL or Lot 0	Sec. 27	Twp. 30 N.	Rge. 13 W.	Lot Lch.	Feet from > 1125'	North/South SOUTH	Feet from > 1795'	East/West EAST	County SAN JUAN

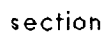
Bottom Hole Location If Different From Surface									
UL or Lot	Sec.	Twp.	Rge.	Lot Lch.	Feet from >	North/South	Feet from >	East/West	County
Dedication 320/E2		Joint ?	Consolidation		Order No.				

NO ALLOWABLE WILL ASSIGNED TO THIS COMPLETION UNTIL ALL INTERESTS HAVE BEEN CONSOLIDATED
OR A NON-STANDARD UNIT HAS BEEN APPROVED BY THE DIVISION



OPERATOR CERTIFICATION I hereby certify that the information contained herein is true and complete to the best of my knowledge and belief. Signature <i>B. W. Solzman</i> Printed Name B. W. SOLZMAN Title CONSULTANT Date 6-7-06	
SURVEYOR CERTIFICATION I hereby certify that the well location on this plat was plotted from field notes of actual surveys made by me or under my supervision, and that the same is true and correct to the best of my belief. Date of Survey 07/26/05	
Signature and Seal of Professional Surveyor 	

well pad and section



TEN-POINT PROGRAM/ OPERATIONS PLAN POGO PRODUCING COMPANY

Well name: Tiger #19T
Location: 1125' FSL & 1795' FEL, O, Sec 27, T-30-N, R-13-W
 San Juan County, NMPM
Formation: Basin Fruitland Coal

1. The geological surface formation is: Ojo Alamo
2. The tops of important geological markers: (based on existing log information)

Ojo Alamo	Surface formation
Top Kirtland	580'
Top Fruitland	1260'
Top Pictured Cliffs	1695'
Top Lewis Shale	1795"

3. Estimated depths of anticipated water, oil, gas, or minerals:

Substance	Formation	Anticipated Depth
Gas	Fruitland Coal	1835'

4. The Casing Program:

Depth	Hole Size	Casing O.D.	Wt.	Grade	Type	New/Used
0-390'	8 3/4"	7"	20#	J-55	ST&C	New
0-1835'	6 1/4"	4-1/2"	10.5#	J-55	ST&C	New

Proposed Cement Program: To effectively isolate and seal off all water, oil, gas and coal bearing strata encountered by the utilization of spacer and centralizers at the base of the Ojo Alamo formation as specified by NTL-FRA 90-1 III.B and API standards; and by using cement volumes as follows: (Exact volumes to be determined from logs): *Circ cmt to surface*

Surface: 196 Cu Ft(166Sx) Class B w/ 0.25# Flocele/ Sx w/5#/Sk Gilsonite plus 2% CaCl (100% Excess). *Circ cmt to surface*

Production: 85 Cubic Feet (42 Sacks Lite Standard Cement w/ 2% Metasilicate + 0.25 pps Flocele mixed to 12.4 ppg followed by 162 Cubic Feet (134 Sacks) Standard w/ 0.6% Halad-322 mixed to 15.6 ppg w/ caliper plus 25% excess in both slurries. Grand Totals: 247 Cubic Feet (176 Sacks).

5. Operators Minimum Specifications for pressure control:

Expected bottom hole pressure 250 psi or less.

Attached is a schematic of the blowout preventer used by a local contractor for other wells in the area. The BOP to be used is a double ram type BOP with flanged connections and high-pressure inlet and outlet hoses, all tested to 250 psi low and 1000 psi high.

In the event drill floor height precludes the use of a lower BOP spool, the rams will be tested in conjunction with the surface casing.

**TEN-POINT PROGRAM
POGO PRODUCING COMPANY**

Well name: Tiger #19T
Location: 1125' FSL & 1795' FEL, O, Sec 27, T-30-N, R-13-W
San Juan County, NMPM
Formation: Basin Fruitland Coal

6. The type and characteristic of the proposed circulating muds:

Surface: Spud flocculating bentonite with lime.
Production: Freshwater - Bentonite

Interval	Mud Weight	Viscosity	Fluid Loss	Ph	Additives
0-650'	8.4	32	-----	7.5	Gel, Lime
650'-TD	8.6 - 9.2	30-50	<15cc	8	Additives as needed to maintain viscosity

7. Auxiliary Equipment to be used is as follows:

- a. Float valve above bit.
- b. Monitoring of mud system will be visual.
- c. A safety valve and subs to fit all drill strings will be used.

8. Testing, logging and coring will be as follows:

- a. Cores: None
- b. Drill stem tests: none anticipated.
- c. Logs will include: High Resolution Induction w/ Gamma Ray, SP, Caliper, Microlog, Spectral Density and Dual Spaced Neutron Microlog; all from Total depth to the surface casing shoe.

9. Anticipated Abnormal Pressures and temperatures:

No abnormal pressures, temperatures, or Hydrogen Sulfide gases are anticipated during the completion of this well.

10. Anticipated starting date and duration of operations:

The anticipated starting date is August, 2006. The drilling operations should be completed within 15 days after rig-up date. Completion will be done as equipment availability and weather permit.

Date: 6-7-06 Drilling Engineer: B. J. Salzman

BOP SCHEMATIC FOR DRILLING OPERATIONS CLASS 1 (2M) NORMAL PRESSURE

TESTING PROCEDURE

1. Test BOP after installation:

Pressure test BOP to 200-300
psig (low pressure) for ¹⁰/₅ min.

Test BOP to Working Press or
to 70% internal yield of surf csg
(10 min).

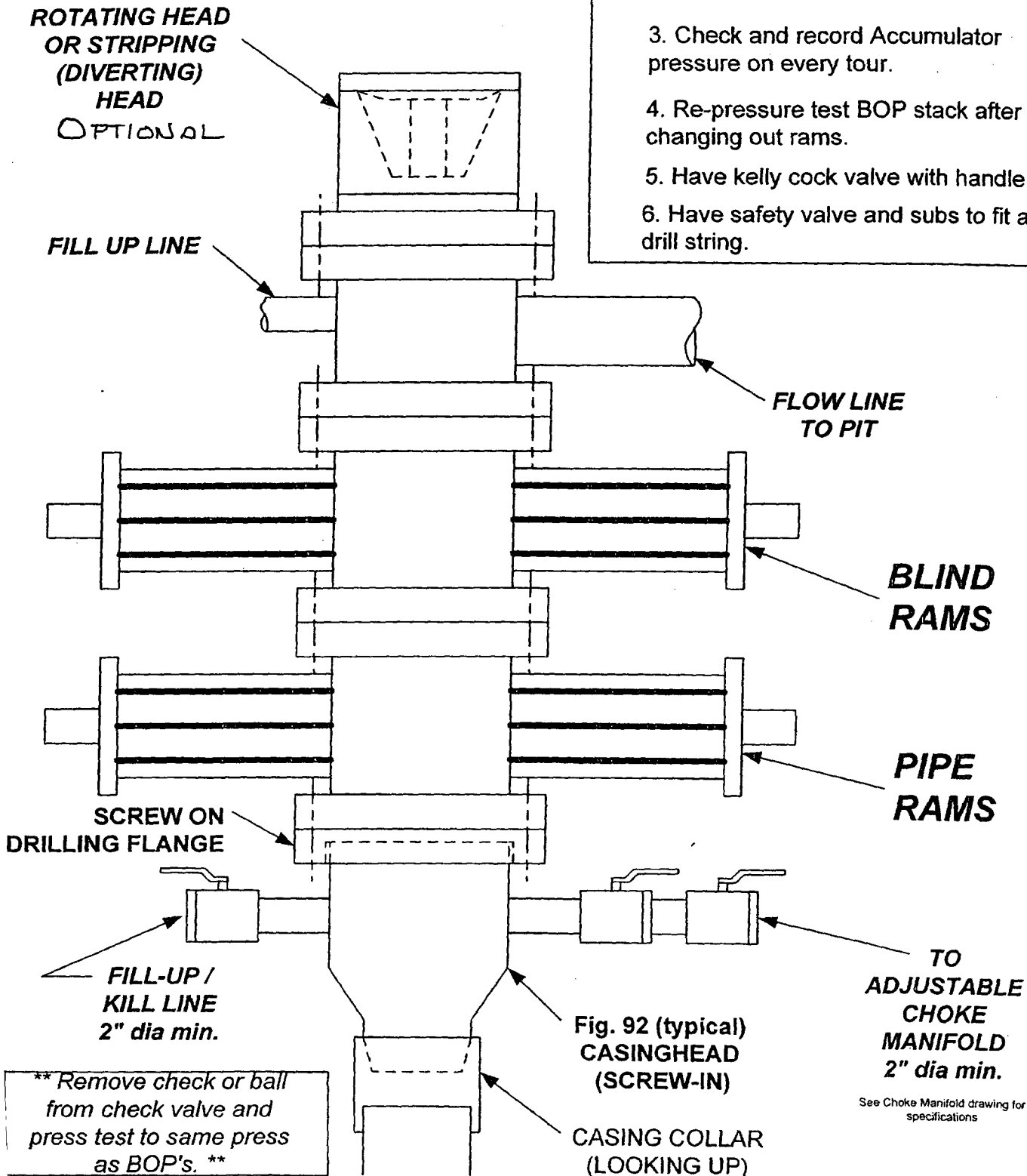
2. Test operation of (both) rams
on every trip.

3. Check and record Accumulator
pressure on every tour.

4. Re-pressure test BOP stack after
changing out rams.

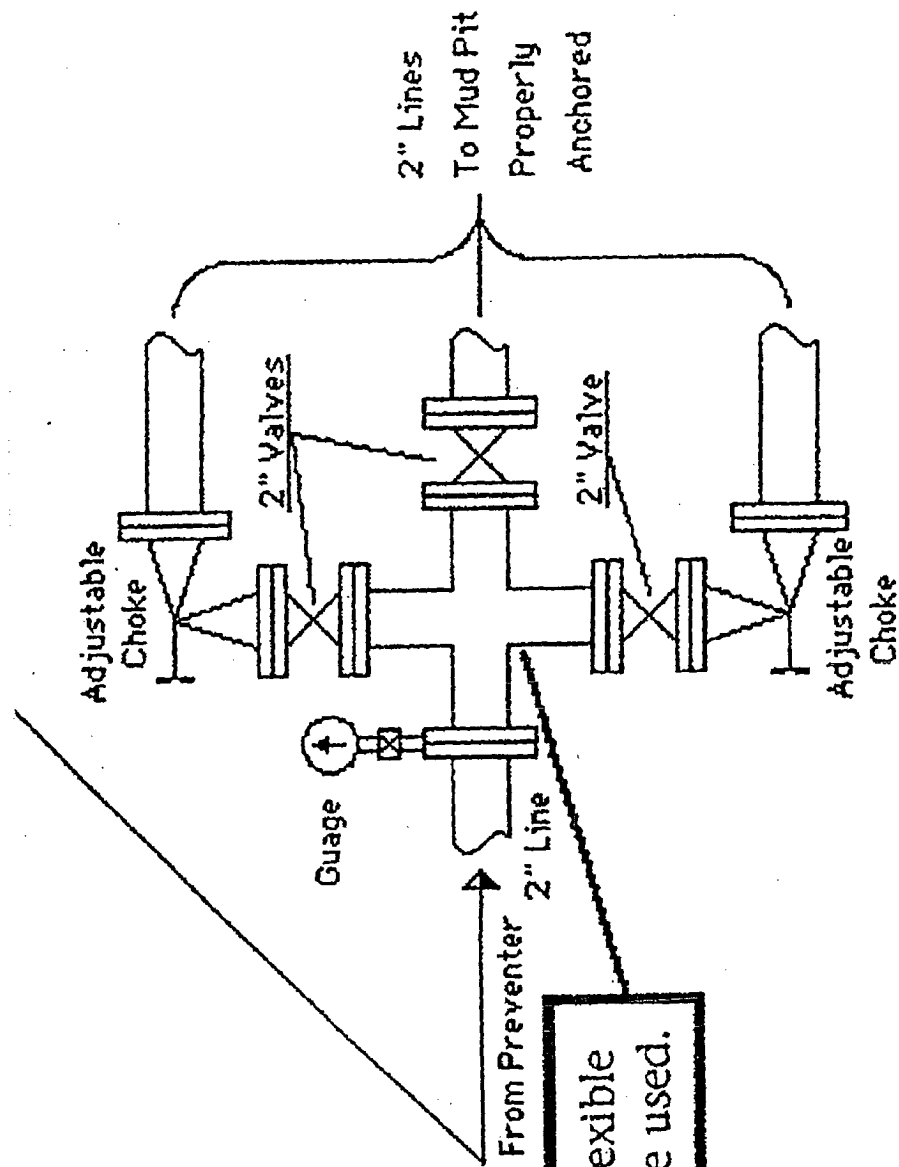
5. Have kelly cock valve with handle available.

6. Have safety valve and subs to fit all sizes of
drill string.



** Remove check or ball
from check valve and
press test to same press
as BOP's. **

See Choke Manifold drawing for
specifications



High-Pressure, threaded flexible inlet and outlet lines will be used.