

UNITED STATES  
DEPARTMENT OF THE INTERIOR  
BUREAU OF LAND MANAGEMENT

APPLICATION FOR PERMIT TO DRILL, DEEPEN, OR PLUG BACK

RECEIVED

1a. Type of Work DRILL	5. Lease Number NMSF-078943 Unit Reporting Number FC-891001650C PC-891001650B	
1b. Type of Well GAS	6. If Indian, All. or Tribe	
2. Operator <b>BURLINGTON</b> RESOURCES OIL & GAS COMPANY LP	7. Unit Agreement Name San Juan 29-7 Unit	
3. Address & Phone No. of Operator PO Box 4289, Farmington, NM 87499  (505) 326-9700	8. Farm or Lease Name San Juan 29-7 Unit 9. Well Number 188	
4. Location of Well 1030' FNL, 900' FWL  Latitude 36° 34.33, Longitude 107° 36.53	10. Field, Pool, Wildcat Basin Fruitland Coal/ Blanco Pictured Cliffs 11. Sec., Twn, Rge, Mer. (NMPM) C Sec. 6, T-29-N, R-7-W API # 30-039- 27441	
14. Distance in Miles from Nearest Town 1 mile from Navajo City	12. County Rio Arriba	13. State NM
15. Distance from Proposed Location to Nearest Property or Lease Line 900'	17. Acres Assigned to Well 215.22 W/2 FC 104.26 NW/4 PC	
16. Acres in Lease	18. Distance from Proposed Location to Nearest Well, Drlg, Compl, or Applied for on this Lease 20'	
19. Proposed Depth 3275'	20. Rotary or Cable Tools Rotary	
21. Elevations (DF, FT, GR, Etc.) 6193' GR	22. Approx. Date Work will Start	
23. Proposed Casing and Cementing Program See Operations Plan attached	This action is subject to technical and procedural review pursuant to 43 CFR 3165.3 and appeal pursuant to 43 CFR 3165.4	
24. Authorized by: <u><i>Regulatory/Compliance Supervisor</i></u>	Date <u>5-2-03</u>	

PERMIT NO. \_\_\_\_\_ APPROVAL DATE \_\_\_\_\_  
APPROVED BY /s/ David J. Mankiewicz TITLE \_\_\_\_\_ DATE 2-2-2003

Archaeological Report to be submitted

Threatened and Endangered Species Report to be submitted

NOTE: This format is issued in lieu of U.S. BLM Form 3160-3

Title 18 U.S.C. Section 1001, makes it a crime for any person knowingly and willfully to make to any department or agency of the United States any false, fictitious or fraudulent statements or presentations as to any matter within its jurisdiction.

HOLD C104 FOR NSR in PC

NMOC

District II  
PO Drawer DD, Artesia, NM 88211-0719

District III  
1000 Rio Brazos Rd., Aztec, NM 87410

District IV  
PO Box 2088, Santa Fe, NM 87504-2088

OIL CONSERVATION DIVISION  
PO Box 2088  
Santa Fe, NM 87504-2088

☐ AMENDED REPORT

## WELL LOCATION AND ACREAGE DEDICATION PLAT

*API Number 30-039- 27441		*Pool Code 71629/72400/72354	*Pool Name Basin Fruitland Coal/Blanco Pictured Cliffs
*Property Code 7465	*Property Name SAN JUAN 29-7 UNIT		*Well Number 188
*OGRID No. 14538	*Operator Name BURLINGTON RESOURCES OIL & GAS COMPANY, LP		*Elevation 6193'

<sup>10</sup> Surface Location

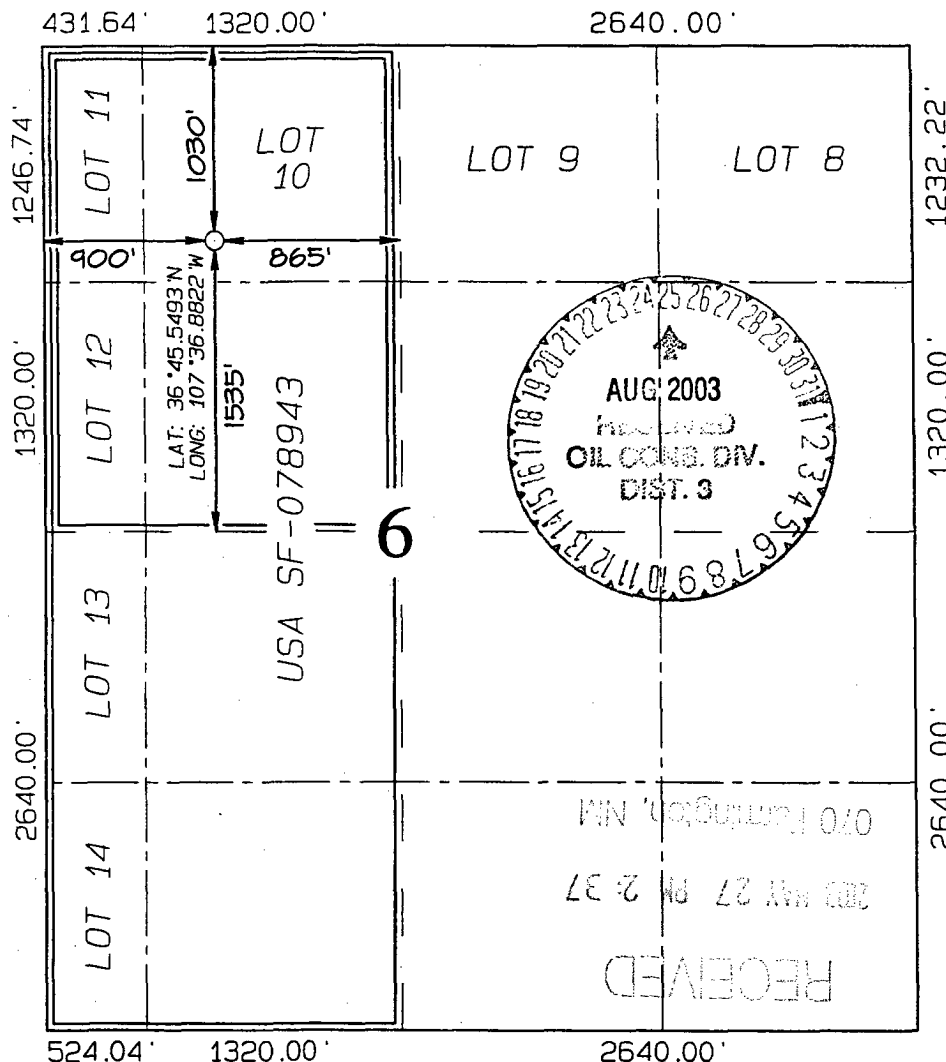
UL or lot no.	Section	Township	Range	Lot Idn	Feet from the	North/South line	Feet from the	East/West line	County
C	6	29N	7W		1030	NORTH	900	WEST	RIO ARRIBA

<sup>11</sup>Bottom Hole Location If Different From Surface

UL or lot no.	Section	Township	Range	Lot Idn	Feet from the	North/South line	Feet from the	East/West line	County
---------------	---------	----------	-------	---------	---------------	------------------	---------------	----------------	--------

<sup>12</sup> Dedicated Acres FTC-W/215.22 PC - <del>W/215.22</del> 104.26	<sup>13</sup> Joint or Infill	<sup>14</sup> Consolidation Code	<sup>15</sup> Order No. R-9303 Tract 1
--	-------------------------------	----------------------------------	---

NO ALLOWABLE WILL BE ASSIGNED TO THIS COMPLETION UNTIL ALL INTERESTS HAVE BEEN CONSOLIDATED  
OR A NON-STANDARD UNIT HAS BEEN APPROVED BY THE DIVISION



17 OPERATOR CERTIFICATION

I hereby certify that the information  
contained herein is true and complete  
to the best of my knowledge and belief

Signature Reggie Cole

Peggy Cole

Printed Name \_\_\_\_\_

Regulatory Supervisor

Title

5-2-03

Date \_\_\_\_\_

**18 SURVEYOR CERTIFICATION**

I hereby certify that the well location shown on this plat was plotted from field notes of actual surveys made by me or under my supervision, and that the same is true and correct to the best of my belief.

Survey Date: FEBRUARY 11, 2003

Signature and Seal of Professional Surveyor



JASON C. EDWARDS  
Certificate Number 15269

## OPERATIONS PLAN

**Well Name:** San Juan 29-7 Unit #188  
**Location:** 1030' FNL, 900' FWL, Section 6, T-29-N, R-7-W  
Rio Arriba County, New Mexico  
Latitude 36° 45.33, Longitude 107° 36.53  
**Formation:** Basin Fruitland Coal/Blanco Pictured Cliffs  
**Elevation:** 6193' GL

<b>Formation:</b>	<b>Top</b>	<b>Bottom</b>	<b>Contents</b>
Surface	San Jose	1910'	
Ojo Alamo	1910'	2125'	aquifer
Kirtland	2125'	2755'	gas
Fruitland Coal	2755'	3015'	gas
Pictured Cliffs	3015'	3175'	gas
Lewis Shale Marker	3175'		
Total Depth	3275'		

**Logging Program:**

Open hole - AIR - TD to surface, CNL/CDL - TD to 2120'  
Mud log - None

**Coring Program:** None

**Mud Program:**

<u>Interval</u>	<u>Type</u>	<u>Weight</u>	<u>Vis.</u>	<u>Fluid Loss</u>
0- 220'	Spud	8.4-9.0	40-50	no control
200-3275'	FW	8.4-9.0	32-45	no control

**Casing Program (as listed, equivalent, or better):**

<u>Hole Size</u>	<u>Depth Interval</u>	<u>Csg. Size</u>	<u>Wt.</u>	<u>Grade</u>
9 7/8"	0 - 200'	7"	20.0#	J-55
6 1/4"	0 - 3275'	4 1/2"	10.5#	K-55

**Tubing Program:**

0' -3275'	2 3/8"	4.7#	J-55
-----------	--------	------	------

**Float Equipment:** 7" surface casing - saw tooth guide shoe.  
Centralizers will be run in accordance with Onshore Order #2.

4 1/2" production casing - float shoe on bottom. Standard centralizers run every other joint above shoe to the base of the Ojo Alamo @ 2125'. Two turbolizing type centralizers - one below and one into the base of the Ojo Alamo @ 2125'. Standard centralizers thereafter every fourth joint up to the base of the surface pipe.

**Wellhead Equipment:** 7" x 4 1/2" x 2 3/8" 2000 psi screw on independent wellhead.

**Cementing:**

7" surface casing - cement with 23 sx Class A, B Portland Type I, II cement (32 cu.ft. of slurry, bring cement to surface) or equivalent. Wait on cement for 24 hours for pre-set holes or 8 hrs for conventionally set holes before pressure testing or drilling out from under surface. Test casing to 600 psi for 30 minutes.

4 1/2" production casing - Lead w/177 sx Premium Lite cement w/3% calcium chloride, 1/4 pps Flocele, 5 pps LCM-1, 0.4% FL-52, 0.4% SMS. Tail w/90 sx Type III cement w/1% calcium chloride, 1/4 pps Flocele, and 0.2% FL-52 (504 cu.ft. of slurry, 50% excess to circulate to surface).

Note: If open hole logs are run, cement volumes will be based on 25% excess over caliper volumes.

**BOP and tests:**

Surface to TD - 11" 2000 psi (minimum double gate BOP stack (Reference Figure #1). Prior to drilling out surface casing, test BOP and casing to 600 psi/30 min.

Completion - 6" 2000 psi (minimum) double gate BOP stack (Reference Figure #2). Prior to completion operations, test BOP and casing to 2000 psi/15 min.

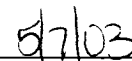
From surface to TD - choke manifold (Reference Figure #3).

Pipe rams will be actuated to least once each day and blind rams actuated once each trip to test proper functioning. An upper kelly cock valve with handle and drill string safety valves to fit each drill string will be maintained and available on the rig floor.

**Additional information:**

- \* The Fruitland Coal and the Pictured Cliffs formation will be completed and commingled.
- \* Anticipated pore pressure for the Pictured Cliffs is 500 psi.
- \* This gas is dedicated.
- \* The west half of Section 6 is dedicated to the Fruitland Coal and the Pictured Cliffs.

  
Drilling Engineer

  
Date