

UNITED STATES
DEPARTMENT OF THE INTERIOR
BUREAU OF LAND MANAGEMENT

SUNDRY NOTICES AND REPORTS ON WELLS

Do not use this form for proposals to drill or reenter an abandoned well. Use Form 3160-3 (APD) for such proposals.

FORM APPROVED
OMB No. 1004-0135
Expires July 31, 1996

RCVD DEC8'06

OIL CONS. DIV.

DIST. 3

SUBMIT IN TRIPLICATE - Other instructions on reverse side

1. Type of Well

☒ Oil Well ☐ Gas Well ☐ Other

2. Name of Operator

Elm Ridge Exploration Co., LLC

3a. Address

PO Box 156, Bloomfield, NM 87413

3b. Phone No. (include area code)

505-632-3476

4. Location of Well (Footage, Sec., T., R., M., or Survey Description)

1710' FNL X 820' FWL
"E" Sec. 22-T23N-R4W

5. Lease Serial No.

Jicarilla Contract 393

6. If Indian, Allottee or Tribe Name

Jicarilla Apache

7. If Unit or CA/Agreement, Name and/or N

8. Well Name and No.

Martin Whittaker #60

9. API Well No.

30-043-20740

10. Field and Pool, or Exploratory Area

S. Lindrith Gallup Dakota ext.

11. County or Parish, State

Sandoval County, NM

12. CHECK APPROPRIATE BOX(ES) TO INDICATE NATURE OF NOTICE, REPORT, OR OTHER DATA

TYPE OF SUBMISSION

TYPE OF ACTION

☒ Notice of Intent

☐ Subsequent Report

☐ Final Abandonment Notice

☐ Acidize

☐ Alter Casing

☐ Casing Repair

☐ Change Plans

☐ Convert to Injection

☐ Deepen

☐ Fracture Treat

☐ New Construction

☒ Plug and Abandon

☐ Plug Back

☐ Production (Start/Resume)

☐ Reclamation

☐ Recomplete

☐ Temporarily Abandon

☐ Water Disposal

☐ Water Shut-Off

☐ Well Integrity

☐ Other

13. Describe Proposed or Completed Operations (clearly state all pertinent details, including estimated starting date of any proposed work and approximate duration thereof. If the proposal is to deepen directionally or recompleat horizontally, give subsurface locations and measured and true vertical depths of all pertinent markers and zones. Attach the Bond under which the work will be performed or provide the Bond No. on file with BLM/BIA. Required subsequent reports shall be filed within 30 days following completion of the involved operations. If the operation results in a multiple completion or recompleat in a new interval, a Form 3160-4 shall be filed once Testing has been completed. Final Abandonment Notices shall be filed only after all requirements, including reclamation, have been completed, and the operator has determined that the site is ready for final inspection.)

Elm Ridge Exploration intends to plug and abandon this well according to the attached procedure.

14. I hereby certify that the foregoing is true and correct

Name (Printed/Typed)

Amy Mackey

Title

Production Assistant

Signature

Date

December 1, 2006

THIS SPACE FOR FEDERAL OR STATE USE

Approved by

Original Signed: Stephen Mason

Title

Date

DEC 07 2006

Conditions of approval, if any, are attached. Approval of this notice does not warrant or certify that the applicant holds legal or equitable title to those rights in the subject lease which would entitle the applicant to conduct operations thereon.

Office

Title 18 U.S.C. Section 1001, makes it a crime for any person knowingly and willfully to make to any department or agency of the United States any false, fictitious or fraudulent statements or representations as to any matter within its jurisdiction.

(Instructions on reverse)

NMOCD

Plugging Program for Martin Whittaker #60:

Plug 1: Spot 51 sack balanced plug from 6924-6512', to cover 100' across perforations and top of Dakota.

Plug 2: Spot 28 sack balanced plug from 5805-5600' to cover 100' across perforations and top of Gallup.

Plug 3: Spot 17 sack balanced plug from 4170-4070' to cover 100' across Cliff House top.

Plug 4: Spot 17 sack balanced plug from 3114-3014' to cover 100' across Chacra top. *Unnecessary*

Plug 5: Spot 67 sack balanced plug from 2701-2147' to cover 100' across Pictured Cliffs, Fruitland, and Ojo Alamo tops.

Plug 6: Perf 4 holes at ^{1026'}~~800'~~ Set retainer at ~~750'~~. Squeeze below retainer with 41 sacks. Spot 6 sacks on top of retainer, to cover 100' across top of Nacimiento.

Plug 7: Perf 4 squeeze holes at 340'. Tie on to 5-1/2" 17# casing. Establish rate through perforations. Pump 133 sacks down 5-1/2" casing, or sufficient volume to circulate cement to surface inside and outside 5-1/2" casing.

Elm Ridge Resources

Pertinent Data Sheet

Well Name: Martin Whitaker #60
Footage: 1710' FNL and 820' FWL
Location: Section 22, T23N, R4W
County: Sandoval County, NM
API#: 30-043-20740

Field: South Lindrith Gallup-Dakota Ext. **Elevation:** 7118' GR **TD:** 7170' KB
PBTD: 6970' KB (DBP)

Completed: 12/14/84

Casing Record:

Hole Size	Casing Size	Wt.	Grade	Depth Set	Cement
12-1/4"	9-5/8"	32#	J-55	290'	236 ft ³ (Circ.)
7-7/8"	5-1/2"	17#	K-55	7170'	Stg 1: 592 ft ³ ; Stg 2: 1280 ft ³ (DV@4969') ⁽¹⁾

1st stage TOC at DV tool (calc.). 2nd stage TOC 1200' (TS)

Tubing Record: MA, 4' perfed sub, SN, 104 stands of tubing.

Formation Tops:

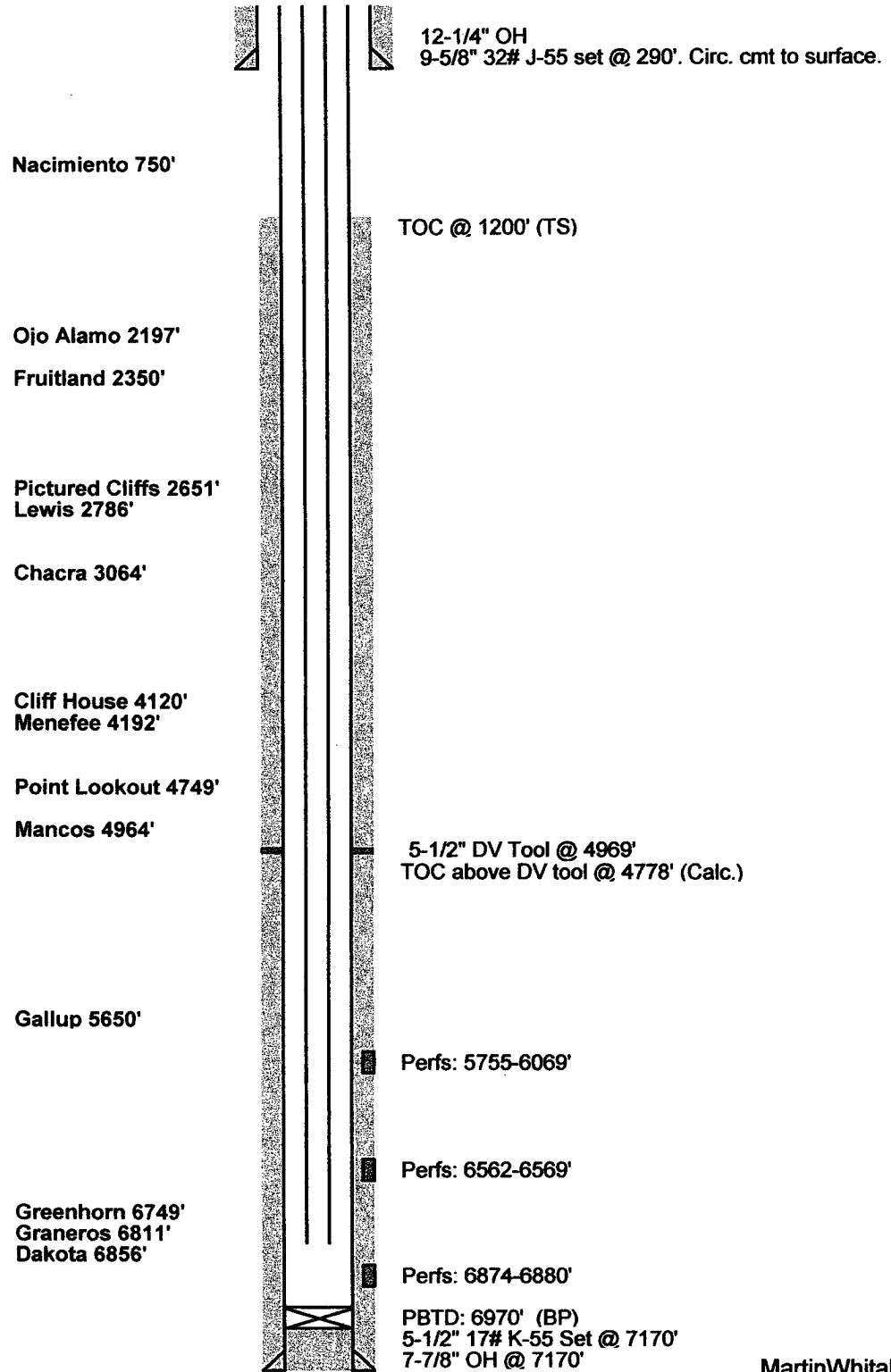
Nacimiento	750'
Ojo Alamo	2197'
Fruitland	2350'
Pictured Cliffs	2651'
Lewis	2786'
Chacra	3064'
Cliff House	4120'
Menefee	4192'
Pt. Lookout	4749'
Mancos	4964'
Gallup	5650'
Greenhorn	6749'
Graneros	6811'
Dakota	6856'

Perforation Record:

Interval	Size	No. of Perfs
5755-6069'	0.375"	150
6562-6569'	0.375"	32
6874-6880'	0.375"	28

Wellbore Diagram
Martin-Whitaker #60
NW/4 Sec. 22, T23N, R4W
Sandoval County, NM
API #30-043-20740

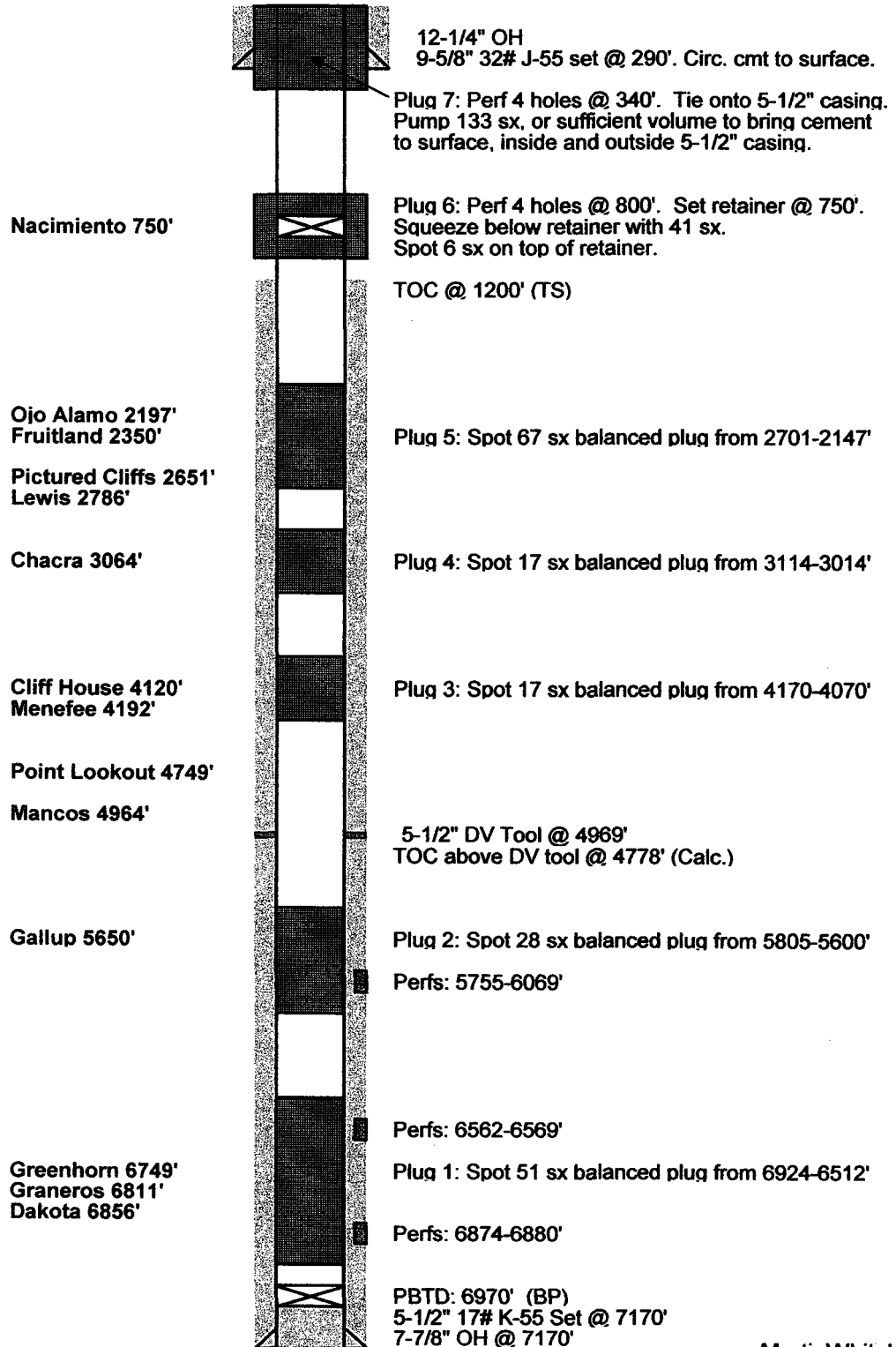
Before



MartinWhitaker60
12/1/2006

Wellbore Diagram
 Martin-Whitaker #60
 NW/4 Sec. 22, T23N, R4W
 Sandoval County, NM
 API #30-043-20740

After



MartinWhitaker60
 12/1/2006

The Jicarilla Apache Nation requires 45 days to evaluate this well beginning from December 6, 2006 in order to determine if they would like to assume ownership of the well. If the Jicarilla Apache Nation has not contacted your office before the end of the 45 days you may proceed with plugging operations.