

UNITED STATES
DEPARTMENT OF THE INTERIOR
BUREAU OF LAND MANAGEMENT

SUNDRY NOTICES AND REPORTS ON WELLS
*Do not use this form for proposals to drill or to re-enter an
Abandoned well. Use Form 3160-3 (APD) for such proposals.*

FORM APPROVED
OMB No. 1004-0135
Expires November 30, 2000

5. Lease Serial No.

SF-070390

6. If Indian, Allottee or tribe Name

7. If Unit or CA/Agreement, Name and/or No.

SUBMIT IN TRIPLICATE - Other instructions on reverse side

1. Type of Well

☐ Oil Well

☒ Gas Well

☐ Other

Well Name and No.

Jones A LS 3

2. Name of Operator

BP America Production Company

Attn: Mary Corley

9. API Well No.

30-045-07469

3a. Address

P.O. Box 3092 Houston, TX 77253

3b. Phone No. (include area code)

281-366-4491

10. Field and Pool, or Exploratory Area

Blanco Mesaverde & Otero Chacra

4. Location of Well (Footage, Sec., T., R., M., or Survey Description)

1460' FNL & 1460' FEL Sec 15 T28N R08W

County or Parish, State

San Juan County, New Mexico

12. CHECK APPROPRIATE BOX(ES) TO INDICATE NATURE OR NOTICE, REPORT, OR OTHER DATA

TYPE OF SUBMISSION

☒ Notice of Intent

Subsequent Report

☐ Final Abandonment Notice

TYPE OF ACTION

☐ Acidize

☐ Deepen

☐ Production (Start/Resume)

☐ Water shut-Off

☐ Alter Casing

☐ Fracture Treat

☐ Reclamation

☐ Well Integrity

☐ Casing Repair

☐ New Construction

☐ Recomplete

☐ Change Plans

☐ Plug and Abandon

☐ Water Disposal

☐ Convert to Injection

☐ Plug Back

Other

Downhole Commingle

13. Describe Proposed or Completed Operation (clearly state all pertinent details, including estimated starting date of any proposed work and approximate duration thereof. If the proposal is to deepen directionally or recompleate horizontally, give subsurface locations and measured and true vertical depths of all pertinent markers and zones. Attach the Bond under which the work will be performed or provide the Bond No. on file with BLM/BIA. Required subsequent reports shall be filed within 30 days following completion of the involved operations. If the operation results in a multiple completion or recompleation in a new interval, a Form 3160-4 shall be filed once testing has been completed. Final Abandonment Notices shall be filed only after all requirements, including reclamation, have been completed, and the operator has determined that the site is ready for final inspection.

BP America Production Company request permission to recompleate the subject well into the Otero Chacra and commingle production Downhole with the existing Blanco Mesaverde as per the attached procedure.

The Blanco Mesaverde (72319) & Otero Chacra (82329) Pools are Pre-Approved Pools for Downhole Commingling per NMOCD order R-11363. The working and overriding royalty interest owners in the proposed commingled pools are identical, therefore no further notification of this application is required.

Production is proposed to be allocated based on the subtraction method using the projected future decline for production from the Mesaverde. That production shall serve as a base for production subtracted from the total production for the commingled well. The balance of the production will be attributed to the Chacra. Attached is the future production decline estimates for the Mesaverde. Commingling Production Downhole in the subject well from the proposed Pools with not reduce the value of the total remaining production.

CONDITIONS OF APPROVAL

Adhere to previously issued stipulations.

14. I hereby certify that the foregoing is true and correct

Name (Printed/typed)

Mary Corley

Title **Senior Regulatory Analyst**

Signature

Date **08/05/2003**

THIS SPACE FOR FEDERAL OR STATE OFFICE USE

Approved by

/s/ Jim Lovato

Title

Date

AUG 20 2003

Conditions of approval, if any, are attached. Approval of this notice does not warrant or Certify that the applicant holds legal or equitable title to those rights in the subject lease which would entitle the applicant to conduct operations thereon.

Office

Title 18 U.S.C. Section 1001 and Title 43 U.S.C. Section 1212, make it a crime for any person knowingly and willfully to make to any department or agency of the United States any false, fictitious or fraudulent statements or representations as to any matter within its jurisdiction.

NMOCD

District I
1625 N. French Dr., Hobbs, NM 88240

District II
811 South First, Artesia, NM 88210

District III
1000 Rio Brazos Rd., Aztec, NM 87410

District IV
2040 South Pacheco, Santa Fe, NM 87505

State of New Mexico
Energy, Minerals & Natural Resources Department

OIL CONSERVATION DIVISION
2040 South Pacheco
Santa Fe, NM 87505

Form C-102
Revised August 15, 2000

Submit to Appropriate District Office
State Lease - 4 Copies
Fee Lease - 3 Copies

AMENDED REPORT

WELL LOCATION AND ACREAGE DEDICATION PLAT

¹ API Number 30-045-07469	² Pool Code 82329	³ Pool Name Otero Chacra
⁴ Property Code 000759	⁵ Property Name Jones A LS	⁶ Well Number 3
⁷ OGRID No. 000778	⁸ Operator Name BP America Production Company	⁹ Elevation 5876' GR

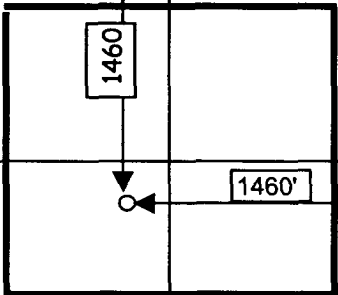
¹⁰ Surface Location

UL or lot no. Unit G	Section 15	Township 28N	Range 08W	Lot Idn	Feet from 1460'	North/South North	Feet from 1460'	East/West East	County San Juan
--------------------------------	----------------------	------------------------	---------------------	---------	---------------------------	-----------------------------	---------------------------	--------------------------	---------------------------

¹¹ Bottom Hole Location If Different From Surface

UL or lot no.	Section	Township	Range	Lot Idn	Feet from	North/South	Feet	East/West	County
¹² Dedicated Acres 160		¹³ Joint or Infill		¹⁴ Consolidation Code		¹⁵ Order No.			

NO ALLOWABLE WILL BE ASSIGNED TO THIS COMPLETION UNTIL ALL INTERESTS HAVE BEEN CONSOLIDATED OR A NON-STANDARD UNIT HAS BEEN APPROVED BY THE DIVISION

RECEIVED 2003 AUG 12 AM 11:08 070 Farmington, NM					¹⁷ OPERATOR CERTIFICATION I hereby certify that the information contained herein is true and complete to the best of my knowledge and belief. <i>Mary Corley</i> Signature Mary Corley Printed Name Sr. Regulatory Analyst Title 08/06/2003 Date
	¹⁸ SURVEYOR CERTIFICATION I hereby certify that the well location shown on this plat was plotted from field notes of actual surveys made by me or under my supervision, and that the same is true and correct to the best of my belief. 00/00/1957 Date of Survey Signature and Seal of Professional Surveyor: C O Walker Certificate Number				

Jones A LS #3 Recompletion Procedure

Procedure:

1. Check anchors. MIRU workover rig.
2. Check and record tubing, casing, and bradenhead pressures.
3. Blow down well. Kill with 2% KCL water ONLY if necessary.
4. Nipple down WH. NU BOPs.
5. Tag for fill and tally OH with 2-3/8" production tubing currently set at 4768'.
6. TIH with bit and scraper for 5-1/2" casing to 4775'. Work casing scraper across Mesaverde perforations from 4035' – 4775' and across Chacra perforations from 3340' – 3525'.
7. RU WL unit. RIH with 5-1/2" CIBP. Set CIBP at 3600'.
8. Load well with 2% KCL.
9. Pressure test casing to 2500 psi with rig pumps.
10. RIH with 3-1/8" casing guns. Perforate Chacra formation (correlate to GR log).

Chacra Perforations, 2 spf

3348' – 3353' (5')

3392' – 3396' (4')

3474' – 3479' (5')

3522' – 3526' (4')

11. RU wellhead isolation tool and Schlumberger frac equipment.
12. Spearhead 500 gal 15% HCL, establish injection rate, and proceed with fracture stimulation according to Schlumberger schedule.
13. Flowback frac immediately.
14. TIH with tubing and bit. Cleanout fill and drill bridge plug set at 3600'. Cleanout fill to PBTD at 4780'. Blow well dry at PBTD.
15. Rabbit tubing and RIH with 2-3/8" production tubing.
16. Land 2-3/8" production tubing at 4750'.
17. ND BOP's. NU WH. Test well for air. Return well to production and commingle Mesaverde and Chacra.

Jones A LS #3

Sec 15, T28N, R8W

API #: 30-04507469

History:

Completed Feb 1956

Jan 2001: Replaced tbg and CO to PBTD

Mar 2003: Attempted Menefee payadd, frac job
circulated thru CH perfs and was
aborted.

MV perforations

Cliffhouse

4034' - 4044', w/ 6 SPF, frac'd w/ 55,000# sand

4080' - 4090', w/ 6 SPF, frac'd w/ 55,000# sand

4142' - 4160', w/ 6 SPF, frac'd w/ 55,000# sand

Menefee: Perfs: 4210' - 4523' (frac circulated)

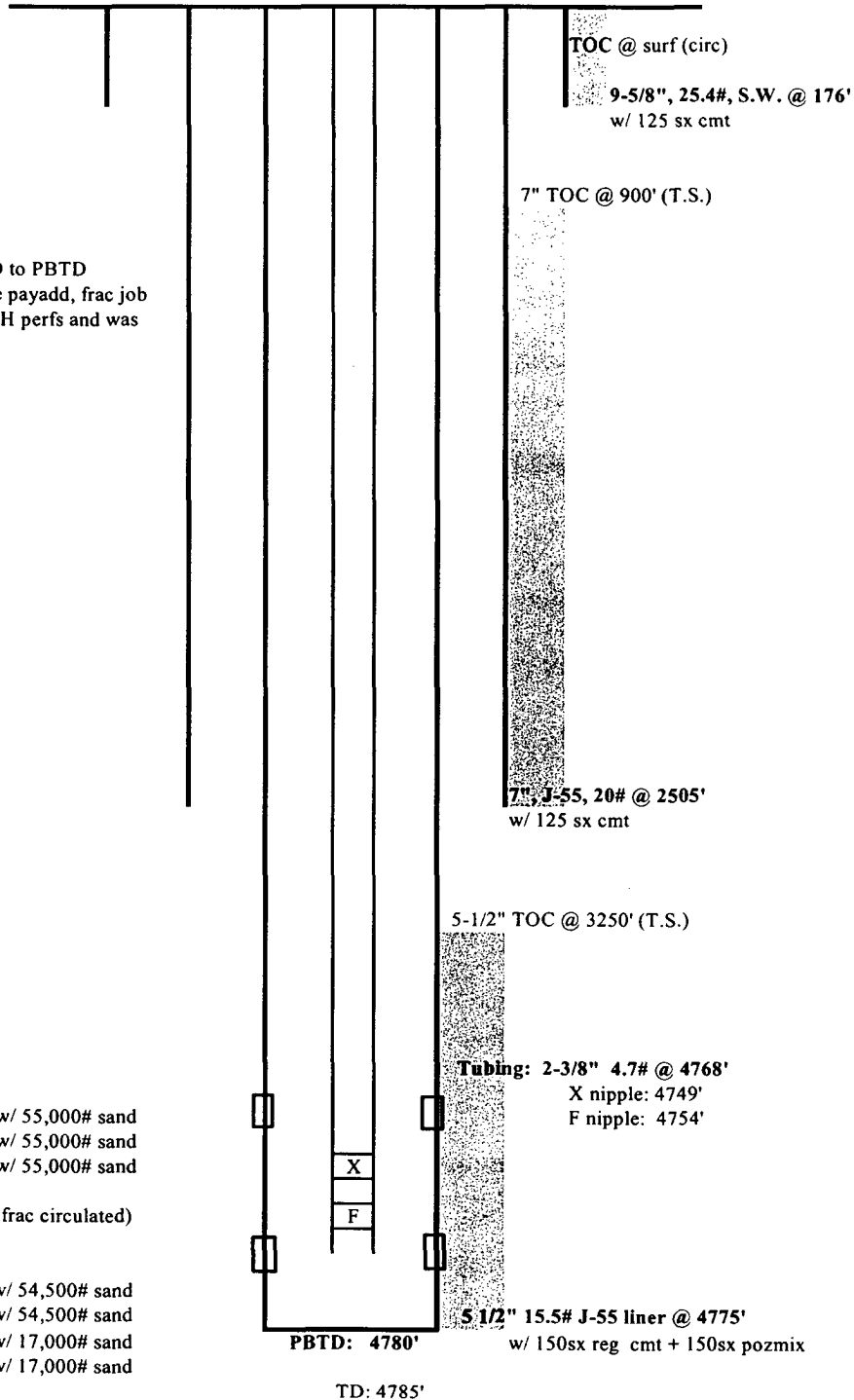
Point Lookout

4620 - 4631', w/ 6 SPF, frac'd w/ 54,500# sand

4654 - 4664', w/ 6 SPF, frac'd w/ 54,500# sand

4732 - 4742', w/ 6 SPF, frac'd w/ 17,000# sand

4763 - 4773', w/ 6 SPF, frac'd w/ 17,000# sand



updated: 6/18/03 JAD

Jones A LS 3

Future Production Decline Estimate Mesaverde

Daily Rates

$\ln(Qf/Qi) = -dt$
 $Qf = 107$
 $Qi = 111$
 $rate = 107$
 $time = 5$
 $dt = -0.036701367$
 $decline = -0.785409251$

Well down for well workover

Month	Gas Volume
Jan-2002	125
Feb-2002	93
Mar-2002	97
Apr-2002	111
May-2002	111
Jun-2002	117
Jul-2002	139
Aug-2002	120
Sep-2002	107
Oct-2002	97
Nov-2002	90
Dec-2002	110
Jan-2003	112
Feb-2003	98
Mar-2003	60
Apr-2003	95
May-2003	91
Jun-2003	80
Jul-2003	79
Aug-2003	78
Sep-2003	78
Oct-2003	77
Nov-2003	76
Dec-2003	75
Jan-2004	75
Feb-2004	74
Mar-2004	73
Apr-2004	72
May-2004	71
Jun-2004	71
Jul-2004	70
Aug-2004	69
Sep-2004	68
Oct-2004	67
Nov-2004	67
Dec-2004	66

Month	Gas Volume
Jan-2005	65
Feb-2005	64
Mar-2005	64
Apr-2005	63
May-2005	62
Jun-2005	61
Jul-2005	60
Aug-2005	60
Sep-2005	59
Oct-2005	58
Nov-2005	57
Dec-2005	56
Jan-2006	56
Feb-2006	55
Mar-2006	54
Apr-2006	53
May-2006	53
Jun-2006	52
Jul-2006	51
Aug-2006	50
Sep-2006	49
Oct-2006	49
Nov-2006	48
Dec-2006	47
Jan-2007	46
Feb-2007	45
Mar-2007	45
May-2007	44
Jun-2007	43
Jul-2007	42
Aug-2007	42
Sep-2007	41
Oct-2007	40
Nov-2007	39
Dec-2007	38
Jan-2008	38

Month	Gas Volume
Feb-2008	37
Mar-2008	36
Apr-2008	35
May-2008	34
Jun-2008	34
Jul-2008	33
Aug-2008	32
Sep-2008	31
Oct-2008	31
Nov-2008	30
Dec-2008	29
Jan-2009	28
Feb-2009	27
Mar-2009	27
Apr-2009	26
May-2009	25
Jun-2009	24
Jul-2009	23
Aug-2009	23
Sep-2009	22
Oct-2009	21
Nov-2009	20
Dec-2009	20
Jan-2010	19
Feb-2010	18
Mar-2010	17
Apr-2010	16
May-2010	16
Jun-2010	15
Jul-2010	14
Aug-2010	13
Sep-2010	12
Oct-2010	12
Nov-2010	11
Dec-2010	10
Jan-2011	9

Jones A LS 3

Future Production Decline Estimate Mesaverde

Daily Rates

Month	Gas Volume
Feb-2011	9
Mar-2011	8
Apr-2011	7
May-2011	6
Jun-2011	5
Jul-2011	5
Aug-2011	4
Sep-2011	3
Oct-2011	2
Nov-2011	1
Dec-2011	1
Jan-2012	0
Feb-2012	0
Mar-2012	0
Apr-2012	0
May-2012	0
Jun-2012	0
Jul-2012	0
Aug-2012	0
Sep-2012	0
Oct-2012	0
Nov-2012	0
Dec-2012	0
Jan-2013	0
Feb-2013	0
Mar-2013	0
Apr-2013	0
May-2013	0
Jun-2013	0
Jul-2013	0
Aug-2013	0
Sep-2013	0
Oct-2013	0
Nov-2013	0
Dec-2013	0
Jan-2014	0