

District I  
1625 N. French Dr., Hobbs, NM 88240  
District II  
1301 W. Grand Avenue, Artesia, NM 88210  
District III  
1000 Rio Brazos Road, Aztec, NM 87410  
District IV  
1220 S. St. Francis Dr., Santa Fe, NM 87505

State of New Mexico  
Energy Minerals and Natural Resources

Form C-101  
May 27, 2004

Oil Conservation Division  
1220 South St. Francis Dr.  
Santa Fe, NM 87505

Submit to appropriate District Office

AMENDED REPORT

**APPLICATION FOR PERMIT TO DRILL, RE-ENTER, DEEPEN, PLUGBACK, OR ADD A ZONE**

<sup>1</sup> Operator Name and Address ROSETTA RESOURCES OPERATING LP 1200 17TH ST., SUITE 770, DENVER, CO 80202		<sup>2</sup> OGRID Number 239235
<sup>3</sup> Property Code 35713	<sup>4</sup> Property Name TSAH TAH 36	<sup>5</sup> API Number 30 - 045 - 34240
<sup>9</sup> Proposed Pool 1 BASIN FRUITLAND COAL		<sup>10</sup> Proposed Pool 2

<sup>7</sup> Surface Location

UL or lot no.	Section	Township	Range	Lot Idn	Feet from the	North/South line	Feet from the	East/West line	County
G	36	25 N	10 W		1515	NORTH	1530	EAST	SAN JUAN

<sup>8</sup> Proposed Bottom Hole Location If Different From Surface

UL or lot no.	Section	Township	Range	Lot Idn	Feet from the	North/South line	Feet from the	East/West line	County

Additional Well Information

<sup>11</sup> Work Type Code N	<sup>12</sup> Well Type Code G	<sup>13</sup> Cable/Rotary ROTARY	<sup>14</sup> Lease Type Code S	<sup>15</sup> Ground Level Elevation 6,753'
<sup>16</sup> Multiple N	<sup>17</sup> Proposed Depth 1,900'	<sup>18</sup> Formation LEWIS	<sup>19</sup> Contractor	<sup>20</sup> Spud Date APR. 1, 2007
Depth to Groundwater >100'		Distance from nearest fresh water well >1,000'		Distance from nearest surface water >300'
Pit: Liner: Synthetic <input checked="" type="checkbox"/> 12 mils thick Clay <input type="checkbox"/>		Pit Volume: <input type="checkbox"/> bbls		Drilling Method:
Closed-Loop System <input type="checkbox"/>		Fresh Water <input checked="" type="checkbox"/> Brine <input type="checkbox"/> Diesel/Oil-based <input type="checkbox"/> Gas/Air <input type="checkbox"/>		

<sup>21</sup> Proposed Casing and Cement Program

Hole Size	Casing Size	Casing weight/foot	Setting Depth	Sacks of Cement	Estimated TOC
8-3/4"	7"	20#	120'	65	SURFACE
6-1/4"	4-1/2"	10.5#	1,900'	225	SURFACE

<sup>22</sup> Describe the proposed program. If this application is to DEEPEN or PLUG BACK, give the data on the present productive zone and proposed new productive zone. Describe the blowout prevention program, if any. Use additional sheets if necessary.

Use 2,000 BOP system

RCVD MAR15'07

OIL CONS. DIV.

DIST. 3

<sup>23</sup> I hereby certify that the information given above is true and complete to the best of my knowledge and belief. I further certify that the drilling pit will be constructed according to NMOCD guidelines  a general permit , or an (attached) alternative OCD-approved plan .

OIL CONSERVATION DIVISION

Approved by:

Title: *[Signature]*  
SENIOR OIL & GAS INSPECTOR, DIST. 3

Printed name: BRIAN WOOD *[Signature]*

Title: CONSULTANT

Approval Date: MAR 16 2007

Expiration Date: MAR 16 2008

E-mail Address: brian@permitswest.com

Date: 3-12-07

Phone: (505) 466-8120

Conditions of Approval Attached

*B* 3/16/07

DISTRICT I  
1625 N. French Dr., Hobbs, N.M. 88240

State of New Mexico  
Energy, Minerals & Natural Resources Department

Form C-102  
Revised August 15, 2000

DISTRICT II  
811 South First, Artesia, N.M. 88210

Submit to Appropriate District Office  
State Lease - 4 Copies  
Fee Lease - 3 Copies

DISTRICT III  
1000 Rio Brazos Rd., Aztec, N.M. 87410

OIL CONSERVATION DIVISION  
2040 South Pacheco  
Santa Fe, NM 87505

DISTRICT IV  
2040 South Pacheco, Santa Fe, NM 87505

AMENDED REPORT

WELL LOCATION AND ACREAGE DEDICATION PLAT

1 API Number <b>30-045-</b>		2 Pool Code <b>71629</b>		3 Pool Name <b>BASIN FRUITLAND COAL GAS</b>	
4 Property Code <b>35713</b>		5 Property Name <b>TSAH TAH 36</b>			6 Well Number <b>.1</b>
7 GRID No. <b>239235</b>		8 Operator Name <b>ROSETTA RESOURCES OPERATING LP</b>			9 Elevation <b>6753'</b>

10 Surface Location

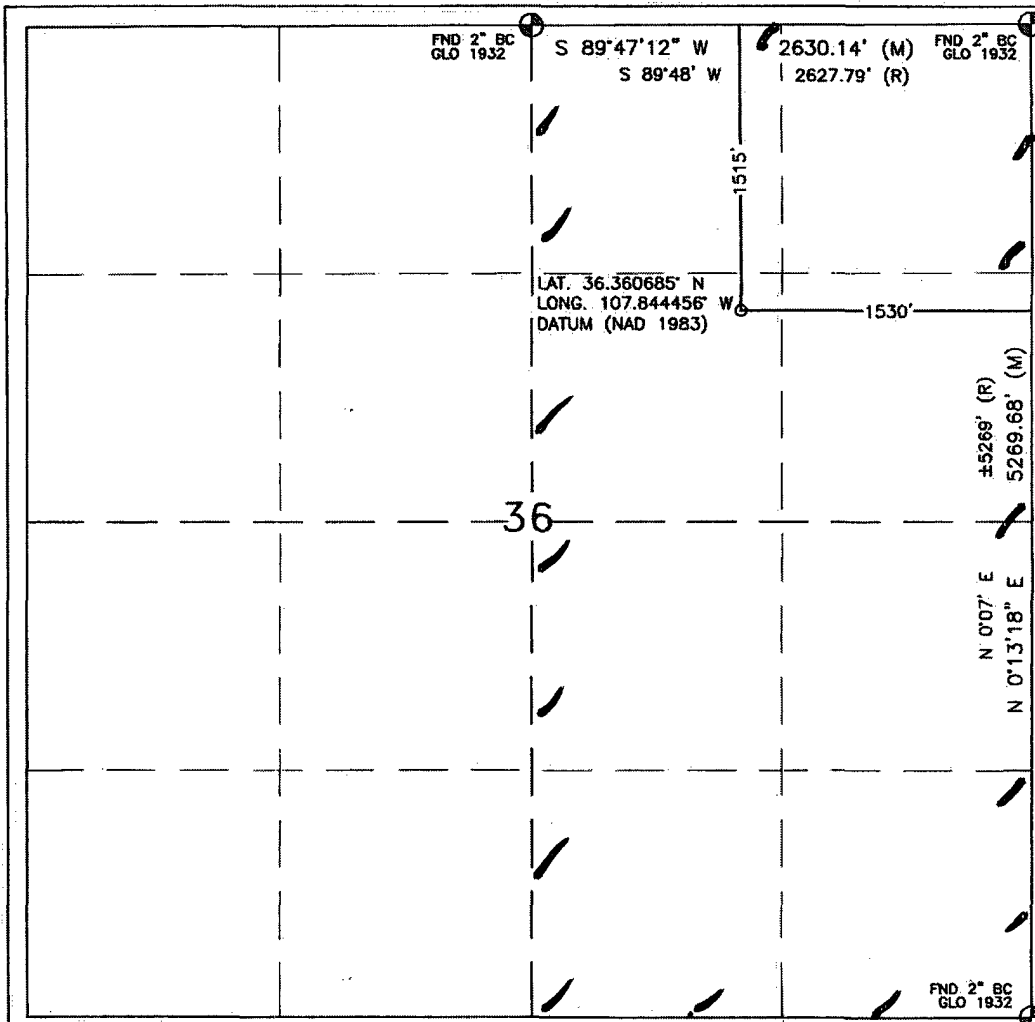
UL or lot no.	Section	Township	Range	Lot Idn	Feet from the	North/South line	Feet from the	East/West line	County
G	36	25N	10W		1515'	NORTH	1530'	EAST	SAN JUAN

11 Bottom Hole Location If Different From Surface

UL or lot no.	Section	Township	Range	Lot Idn	Feet from the	North/South line	Feet from the	East/West line	County
								RCVD MAR15'07	
12 Dedicated Acres <b>320</b>			13 Joint or Infill		14 Consolidation Code <b>C</b>		15 Order No. <b>OIL CONS. DIV. DIST. 3</b>		

NO ALLOWABLE WILL BE ASSIGNED TO THIS COMPLETION UNTIL ALL INTERESTS HAVE BEEN CONSOLIDATED OR A NON-STANDARD UNIT HAS BEEN APPROVED BY THE DIVISION

16



17 OPERATOR CERTIFICATION

I hereby certify that the information contained herein is true and complete to the best of my knowledge and belief

*Brian Wood*

Signature  
**BRIAN WOOD**  
Printed Name  
**CONSULTANT**  
Title  
**MAR. 12, 2007**  
Date

18 SURVEYOR CERTIFICATION

I hereby certify that the well location shown on this plat was plotted from field notes of actual surveys made by me or under my supervision, and that the same is true and correct to the best of my belief.

NOVEMBER 15, 2006

Date of Survey  
Signature and Seal of Professional Surveyor:

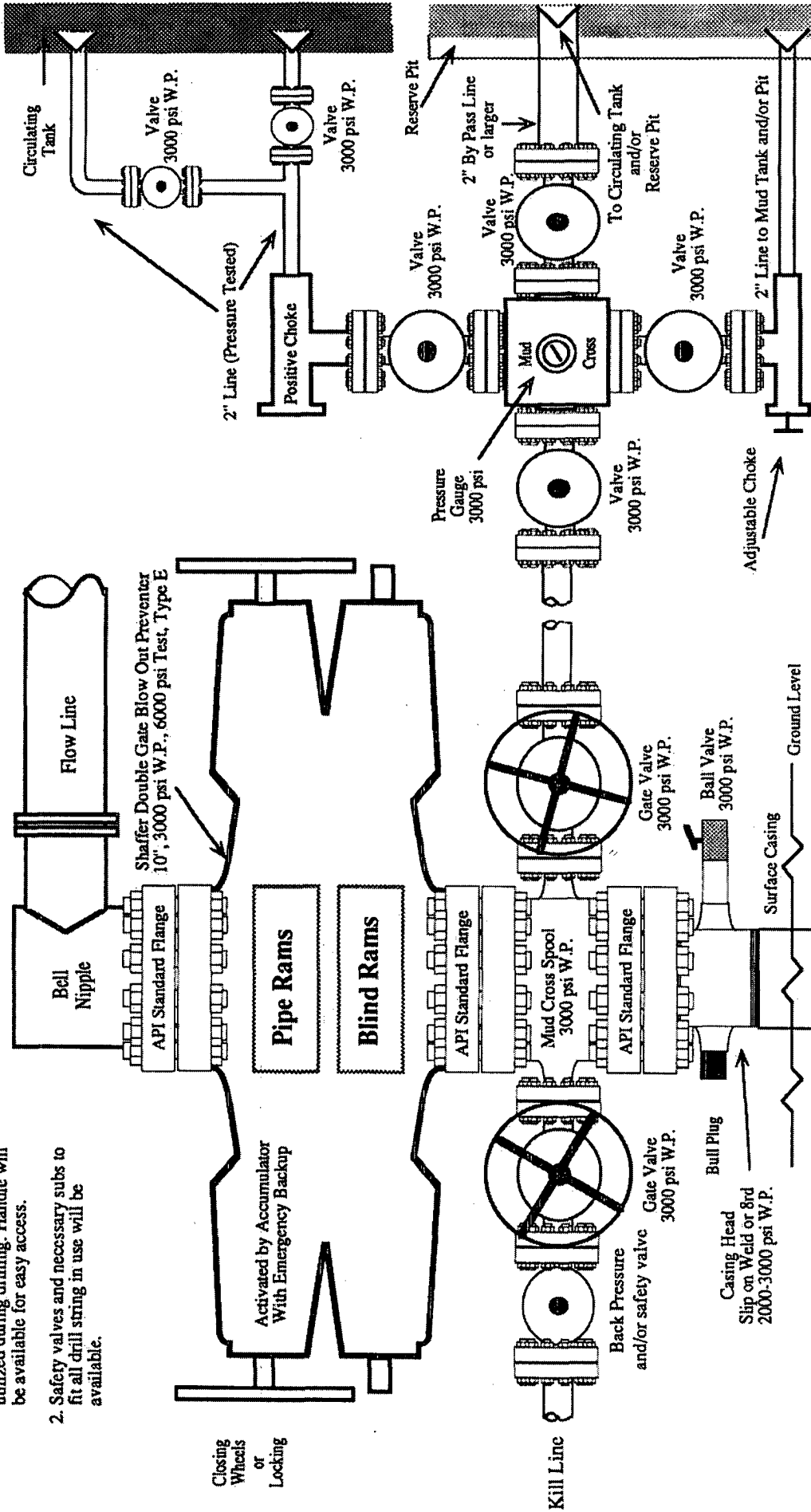
*David R. Russell*

DAVID RUSSELL

Certificate Number **10201**

# 2,000 PSI BOP SYSTEM

- Note: 1. An upper Kelly cock valve will be utilized during drilling. Handle will be available for easy access.
2. Safety valves and necessary subs to fit all drill string in use will be available.



Note: This equipment is designed to meet requirements for a 2-M rating standard per 43 CFR part 3160 (amended). Proper operation and testing of equipment will be carried out per standard. 2,000 psi equipment can be substituted in the drawing to meet minimum requirements per standard.