

In Lieu of
Form 3160
(June 1990)

UNITED STATES
DEPARTMENT OF INTERIOR
BUREAU OF LAND MANAGEMENT

DIST. 3

FORM APPROVED
Budget Bureau No. 1004-0135
Expires: March 31, 1993

SUNDRY NOTICE AND REPORTS ON WELLS

Do not use this form for proposals to drill or to deepen or reentry to a different reservoir. Use "APPLICATION TO DRILL" for permit for such proposals

SUBMIT IN TRIPLICATE

1. Type of Well
Oil Well ☒ Gas Well ☐ Other ☐

2. Name of Operator
WILLIAMS PRODUCTION COMPANY

3. Address and Telephone No.
PO BOX 3102 MS 25-2, TULSA, OK 74101 (918) 573-6254

4. Location of Well (Footage, Sec., T., R., M., or Survey Description)
1310' FNL & 1330' FEL, NW/4 NE/4 SEC 31-T31N-R05W

5. Lease Designation and Serial No.
NMSF-078764

6. If Indian, Allottee or Tribe Name

7. If Unit or CA, Agreement Designation

8. Well Name and No.
ROSA UNIT #230

9. API Well No.
30-039-24397

10. Field and Pool, or Exploratory Area
BASIN FRUITLAND COAL

11. County or Parish, State
RIO ARRIBA, NM

CHECK APPROPRIATE BOX(S) TO INDICATE NATURE OF NOTICE, REPORT, OR OTHER DATA

TYPE OF SUBMISSION

TYPE OF ACTION

Notice of Intent

X Subsequent Report

Final Abandonment

Abandonment
Recompletion
Plugging Back
Casing Repair
Altering Casing
Other Clean out

Change of Plans
New Construction
Non-Routine Fracturing
Water Shut-Off
Conversion to Injection
Dispose Water
(Note: Report results of multiple completion on Well Completion or Recompletion Report and Log form.)

13. Describe Proposed or Completed Operations (Clearly state all pertinent details, and give pertinent dates, including estimated date of starting any proposed work. If well is directionally drilled, give subsurface locations and measured and true vertical depths for all markers and zones pertinent to this work.)*

02-07-2007

MIRU. Unseat pump, LD polished rod & stuffing box. POW, LD sucker rods & rod pump. Secure well & location, SWION.

02-08-2007

SIP 200# bleed well down @ 2" line. ND wellhead, NU BOP's, HCR's valves & blooie lines. RU rig floor, tbg tongs, air slips, pull tbg hanger, POOH & tally 103 jts tbg 1- 10' pup jt. LD mud anchor, NU manifold & hardlines from air package. RIW w/ 2 7/8" half mule shoe, 1jt 2 7/8" tbg, 2.28 F-nipple w/ standing valve & 60 jts 2 7/8" tbg, test tbg to 900 psi every 15 jts. Secure well & location, freeze protect equipment & SWION.

02-09-2007

SIP 200# bleed well down @ 2" line. RIW w/ 2 7/8" half muleshoe, 1jt 2 7/8" tbg, 2.28 F-nipple w/ standing valve & 43 jts 2 7/8" tbg, test tbg to 900 psi every 15 stands. RU Lubricator & fish standing valve, PU 2 jt tbg tag fill @ 3324', 3' of fill est circulation w/ 10 bph air-mist, 1 gal foamer & 1/2 gal corrosion inhibitor per 10 bbl produced coal water, light returns. CO to PBTB @ 3327', TOOHH & stand back tbg. PU 2 7/8" DP from pipe basket, tally & RIW. Secure well & location, SI until Monday.

14. I hereby certify that the foregoing is true and correct

Signed

Rachel M. Lippard
Rachel M. Lippard

Title Engineering Tech

Date March 14, 2007

(This space for Federal or State office use)

Approved by

Title

Date

Conditions of approval, if any:

ACCEPTED FOR RECORD

Title 18 U.S.C. Section 1001, makes it a crime for any person knowingly and willfully to make to any department or agency of the United States any false, fictitious or fraudulent statements or representations as to any matter within its jurisdiction.

NMOCB

FARMINGTON OFFICE
MAR 21 2007

02-12-2007

SIP 200# bleed well down @ 2" line. TOO H & stand back DP. PU & MU & RIW as follows TIW retrieving tool, & 99 jts 2 7/8" AOH DP. Tagged liner top. Attempt to pull liner, liner stuck, pulled up to 50,000# over string wt would not release. TOO H, PU set of jars, jar on liner, it came loose @ 83,000#, 50,000# over string wt. TOO H w/ drill string & liner, LD jars, RU San Juan csg. Unable to pull liner, SJ Csg's tongs broke down & will need replaced. RD tongs & load out. Secure well & location, SWION.

02-13-2007

SM w/ rig crew. SIP 200# bleed well down @ 2" line. JHA w/ SJ csg & rig crew, RU San Juan csg, LD 1jt DP, LD TIW retrieving tool, LD 5jts 5-1/2" 17# perforated liner. RD San Juan csg. Change top pipe rams to 2-7/8" pitot well 1oz 158 MCFD. PU, MU & RIH as follows, 6-1/4" rerun bit, bit sub, 8 4-3/4" DC's, Xover sub, & 98 jts 2-7/8" AOH DP. Check for fill, approx. 3' light soft fill. Cleanout to TD, Returns lt fine coal & heavy grey water. cut mist, blow well dry w/ air only, LD 7 jts of DP, pull into 7" csg. Secure well & location, No accidents reported. SION

02-14-2007

Suspended operations due to inclement weather.

02-15-2007

SIP 200#, blow well down @ blooie line, lt fine coal dust, no water, lt dry gas. PU & RIH 6 jts DP, no fill, est circ w/ air only, unload heavy brown water from wellbore, after 3 hrs still making 10 bph water, very lt solids, continue to clean w/ air. LD singles, pull into 7" csg, build surge w/ air only from shoe, built to 600#, SI soak for 30min, surge to pit. Secure well & location, freeze protect equipment. No accidents reported. SDFN

02-16-2007

SIP 240# blow well down @ Blooie line. Lt fine coal dust, no water lt dry gas. Slight gas increase. PU & RIH 6 jts DP, 3' loose fill, est circ w/ air only, clean out to TD unload heavy brown, & lt fine coal. build surges from 3322' to 500#, returned lt fine coal and med black water, pump 5bbl sweep after each surge, returned med fine coal and heavy black foam & water. Repeat 4 more times. LD DP singles, Pull into 7" csg. SDFWE

02-19-2007

SIP 250# blow well down @ blooie line. Light fine coal dust, no water, and light dry gas. PU DP singles & check for fill, tagged fill @ 3260' approx 70' of fill est circ & CO to TD. Blow well dry w/ air, LD singles. Secure well & location, freeze protect equipment, SION.

02-20-2007

SIP 250# blow well down @ blooie line, light coal dust, no water med dry gas. PU & RIH 4 jts DP, tagged bridge @ 3260', circ w/ 10 bph air-mist w/ 1gal foamer & 1/2 gal shale treat per 20 bbl water, unloaded heavy black water & med to heavy fine to 1/8" coal. Well is running med to heavy 1/8" coal, sweeps are bringing heavy fine to 1/8" coal & heavy black foam. CO to TD, blow well dry w/ air only. LD 6 jts DP pull into 7" csg, hang off 2.5 PS. Build nat surge from shoe for 2 hrs, 220# build pressure, release surge, light fine coal, no water & med dry gas returned. Secure well & location, freeze protect equipment. SWION.

02-21-0007

SIP 240# blow well down @ blooie line. Lt coal dust, no water med dry gas. PU DP singles, tag bridge @ 3260' est circ & CO to TD @ 3330', returns of med to heavy coal up to 1/8" w/ lt 1/4" shale about 10%. Cut mist, blow well dry w/ air only. LD 6 jts DP pull into 7" csg. Hang off 2.5 PS. Secure well & location, freeze protect equipment & SWION.

02-22-2007

SIP 240# blow well down @ blooie line. Light coal dust, no water med dry gas. PU DP & RIH, tagged bridge @ 3260'. Est circ, CO to TD light returns of fine coal & heavy black water. Pull into 7" csg, build surges from shoe w/ air-mist & surge to pit, build surge to 500# & SWION.

02-23-2007

SIP 500#, gauge was stuck @ 500#, filled w/ coal fines, unsure of psi, blow well down @ blooie line, very light coal dust, no water light dry gas. PU DP RIW & check for fill, tagged bridge @ 3260', est circ CO to TD, returns light fine coal & heavy black water. Surge from shoe w/ air build to 500# surge to pit, light dust & no water returned, repeat, same returns. Build pressure to 500# & SIFW.

02-26-2007

Friday, well was left w/ 500#, press dropped to 250# over the weekend. Surged to pit, lt coal dust no water & lt dry gas. PU & RIH 6 jts DP, tagged bridge @ 3245', est circ w/ 10 bph air-mist w/ 1gal foamer & 1/2 gal shale treat per 20 bbl water, unloaded heavy 1/8" coal, heavy 1/2" shale about 50%, & heavy black water. Work pipe & pump sweeps, continue to CO to TD @ 3330'. Well is running heavy coal w/ some shale at times. LD DP sgls, pull into 7" csg, secure well & location, SWION.

02-27-2007

SIP 0#, HCR valve was open. Build 2 surges w/ air hand to 600# returns lt coal dust, med clear water. PU DP sgls, check for fill, tag fill approx 20'. Est circ w/ 10 bph air-mist w/ 1gal foamer & 1/2 gal shale treat per 20 bbl water. Work pipe & pump sweeps, CO to TD, med returns of fine to 1/8" coal & heavy black water. LD DP sgls, pull into 7" csg, secure well & location, SWION.

02-28-2007

SIP 230#, blow well down @ blooie line, lt coal dust, no water lt dry gas. PU DP sgls, check for fill, no fill, est circ, work pipe, pump sweeps, CO to TD, returned, lt coal fines & heavy black water. LD DP sgls, RD 2.5 PS, TOO H & standback DP, LD 4 3/4" DC's, secure well & location, freeze protect equipment & SWION.

03-01-2007

SIP 230# bleed well down @ 2" line. RU SJ csg, PU, MU & RIH as follows; 5 1/2" set shoe, 7 jts 5 1/2" 17# csg (285.23'), 5 1/2 X 7 H-latch, TIW setting tool & 1 jt 2 7/8" AOH DP. RD SJ csg, CO top pipe rams to 2 7/8", RIH w/ 96 jts 2 7/8" AOH DP, release H-latch setting tool & land liner, TD @ 3332', PB TD 3331', top of liner @ 3043' w/ 117' of overlap, TOOH & LD 97 jts DP. Secure well & location, freeze protect equipment & SWION.

03-02-2007

SIP 230# bleed well down @ 2" line. RU Basin WL, perf 5 1/2" 17# liner as follows, bottom to top 3306' to 3328' (88 holes), 3286' to 3296' (40 holes), 3242' to 3252' (40 holes), 3189' to 3194' (20 holes) total 188 holes. RD Basin WL, TIH, CO liner, TOOH, PU mud anchor & F-nipple & TIH. Secure well & location, freeze protect equipment, SWION.

03-05-2007

SIP 250# bleed well down @ 2" line. RU Dynacoil, RIW w/ 2 stds of 2 7/8" tbg & 10' pup jt run 145" of chem line. Land tbg as follows, 2 7/8" mud anchor, 2.28 ID F-nipple, 103 jts 2 7/8" tbg & 10' 2 7/8" pup jt. EOT set @ 3328', 2.28 F-nipple @ 3296'. RD Dynacoil, RD tongs & floor, ND blooie lines & BOP stack. Test tbg hanger. NU sucker rod wellhead, pump out tbg plug. RIW as follows, 2 1/2" x 1 1/2" x 16' x 20' RHAC insert pump, 132 3/4" sucker rods w/ "T" couplings, 8' pony rod, & 1 1/4" x 22' spray metal polished rod. Test pump, RD equipment & lower derrick. Turn well to production department. Release rig @ 1830 hrs.

ROSA UNIT #230 FRUITLAND COAL

Location:

1310' FNL and 1330' FEL
NW/4, NE/4, Sec 31B, T31N, R5W
Rio Arriba, NM

Elevation: 6510' GL
KB = 12'

API: 3003924397

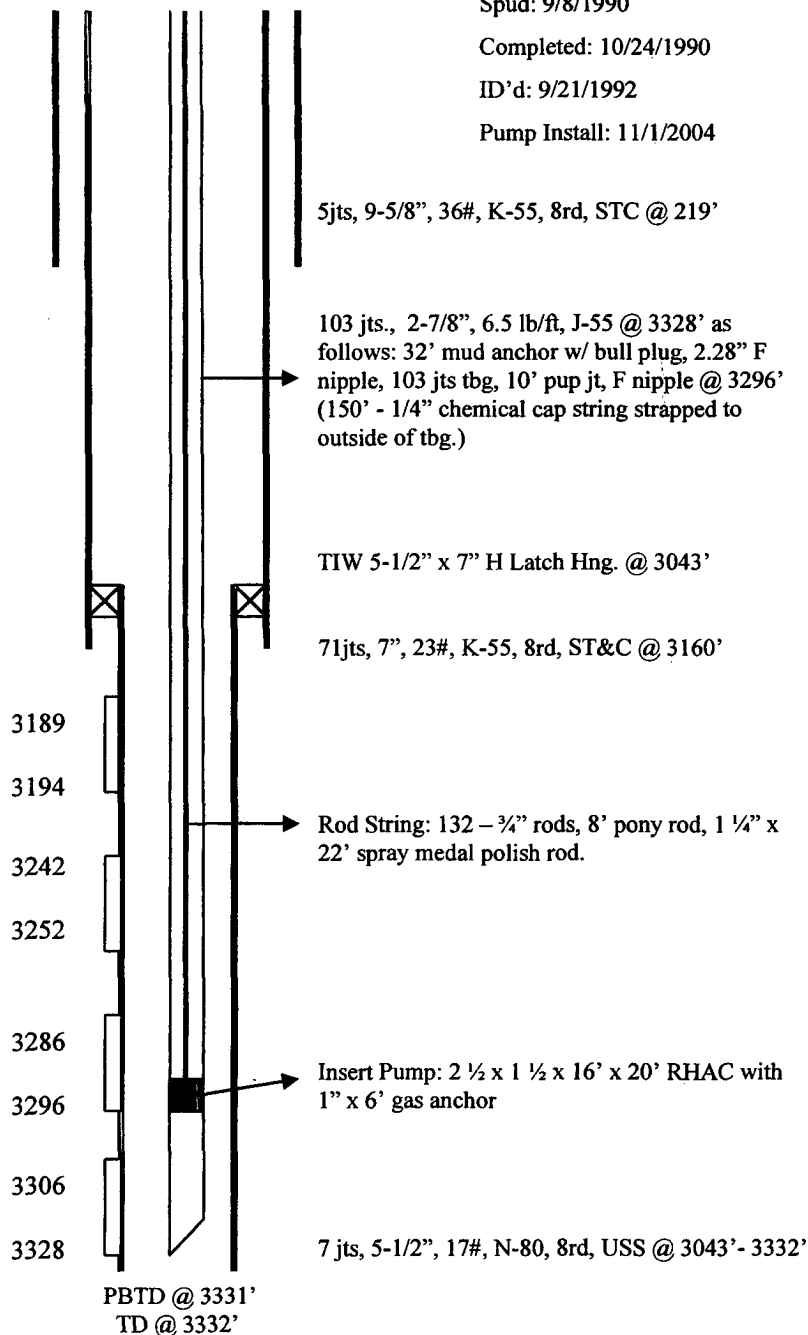
Top	Depth
Ojo Alamo	2590'
Kirtland	2727'
Fruitland	3082'

Perforations: 4 spf, 0.5" EHD
47' interval w/ 188 holes

Underream from 3169'-3330'
6-1/4" to 9-1/2" hole

Dyna Pump 168"

Spud: 9/8/1990
Completed: 10/24/1990
ID'd: 9/21/1992
Pump Install: 11/1/2004



Hole Size	Casing	Cement	Top of Cmt
12-1/4"	9-5/8", 36#	160 sx	Surface
8-3/4"	7", 23#	821 sx	Surface
6-1/4"	5-1/2", 15.5#	Did Not Cmt	N.A.