

UNITED STATES
DEPARTMENT OF THE INTERIOR
BUREAU OF LAND MANAGEMENT
APPLICATION FOR PERMIT TO DRILL OR REENTER

FORM APPROVED
OMB No. 1004-0136
Expires November 30, 2000

2006 JUL 3 PM 3:20

5. Lease Serial No. **SF-080704**

6. If Indian, Allottee or tribe Name

7. If Unit or CA Agreement, Name and No

8. Lease Name and Well No.

STOREY B 1N

9. API Well No.

30-045-33831

10. Field and Pool, or Exploratory

Basin Dakota & Blanco Mesaverde

11. Sec., T., R., M., or Blk. and survey or Area

SECTION 11 T30N & R11W

M

12. County or Parish

SAN JUAN

13. State

NEW MEXICO

1a. Type of Work: ☒ DRILL

☐ REENTER

1b. Type of Well: ☐ Oil Well ☒ Gas Well Gas ☐ Other ☐ Single Zone ☐ Multiple Zone

2. Name of Operator

BP AMERICA PRODUCTION COMPANY

3a. Address

P.O. BOX 3092 HOUSTON, TX 77079-2064

3b. Phone No. (include area code)

281-366-4081

4. Location of Well (Report location clearly and in accordance with any State requirements. *)

At surface **890' FSL & 1000' FSL** SESW **M**

At proposed prod. Zone **700' FSL 1900' FWL N**

14. Distance in miles and direction from nearest town or post office*

2 MILES EAST FROM AZTEC, NM

15. Distance from proposed*

Location to nearest
Property or lease line, ft.

(Also to nearest drig. Ujnit line, if any) **705'**

16. No. of Acres in lease

320

17. Spacing Unit dedicated to this well

320 w/ 2 m v

5/2 DK

18. Distance from proposed location*
to nearest well, drilling, completed,
applied for, on this lease, ft.

19. Proposed Depth

6911' MD

20. BLM/BIA Bond No. on file

WY2924

21. Elevations (show whether DF, KDB., RT, GL, etc.)

5829' GL 5812

22. Approximate date work will start*

10/15/06

23. Estimated duration

7 DAYS

24. Attachments

The following, completed in accordance with the requirements of Onshore Oil and Gas Order No. 1, shall be attached to this form:

- Well plat certified by a registered surveyor.
- A Drilling Plan.
- A Surface Use Plan (if the location is on National forest System Lands, the SUPO shall be filed with the appropriate Forest Service Office).
- Bond to cover the operations unless covered by an existing bond on file (see Item 20 above).
- Operator certification.
- Such other site specific information and/or plans as may be required by the authorized officer.

25. Signature

Cherry Hlava

Name (Printed/typed)

Cherry Hlava

Date

06/30/06

Title

Regulatory Analyst

Approved by (Signature)

Jim Lovato

Name (Printed/Typed)

Date

3/19/07

Title

Acting AFM Minerals

Office

Application approval does not warrant or certify the applicant holds legal or equitable title to those rights in the subject lease which would entitle the applicant to conduct Operations thereon.

Conditions of approval, if any, are attached.

Title 18 U.S.C. Section 1001 and title 43 U.S.C. Section 1212, make it a crime for any person knowingly and willfully to make to any department or agency of the United States any false, fictitious or fraudulent statements or representations as to any matter within its jurisdiction.

*(Instructions on reverse)

NOTIFY AZTEC OGD
IN TIME TO WITNESS

DRILLING OPERATIONS AUTHORIZED ARE
SUBJECT TO COMPLIANCE WITH ATTACHED
"GENERAL REQUIREMENTS".

This action is subject to technical and
procedural review pursuant to 43 CFR 3165.3
and appeal pursuant to 43 CFR 3165.4

HOLD C104 FOR

**directional survey +
BH survey**

NMOCD

3/27/07

District I
PO Box 1980, Hobbs NM 88241-1980
District II
PO Drawer KK, Artesia, NM 87211-0719
District III
1000 Rio Brazos Rd., Aztec, NM 87410
District IV
PO Box 2088, Santa Fe, NM 87504-2088

State of New Mexico
Energy, Minerals & Natural Resources Department

OIL CONSERVATION DIVISION
PO Box 2088
Santa Fe, NM 87504-2088

Form C-102
Revised February 21, 1994

Instructions on back
Submit to Appropriate District Office
State Lease - 4 Copies
Fee Lease - 3 Copies

RCVD MAR 22 '07
☐ AMENDED REPORT

OIL CONS. DIV.
DIST. 3

WELL LOCATION AND ACREAGE DEDICATION PLAT

¹ API Number 30-045-33831	² Pool Code 71599; 72319	³ Pool Name Basin Dakota; Blanco Mesaverde
⁴ Property Code 1137	⁵ Property Name Storey B	⁶ Well Number # 1N
⁷ OGRID No 778	⁸ Operator Name BP AMERICA PRODUCTION COMPANY	⁹ Elevation 5812

¹⁰ Surface Location

UL or Lot No.	Section	Township	Range	Lot Idn	Feet from the	North/South line	Feet from the	East/West line	County
M	11	30 N	11 W		895	SOUTH	1005	WEST	SAN JUAN

¹¹ Bottom Hole Location If Different From Surface

⁷ UL or lot no.	Section	Township	Range	Lot Idn	Feet from the	North/South line	Feet from the	East/West line	County
N	11	30 N	11 W		700	SOUTH	1900	WEST	SAN JUAN

¹² Dedicated Acres 46.320 1/2	¹³ Joint or Infill	¹⁴ Consolidation Code	¹⁵ Order No.
--	-------------------------------	----------------------------------	-------------------------

NO ALLOWABLE WILL BE ASSIGNED TO THIS COMPLETION UNTIL ALL INTERESTS HAVE BEEN CONSOLIDATED
OR A NON-STANDARD UNIT HAS BEEN APPROVED BY THE DIVISION

<div><p>16</p><p>2685'(R)</p><p>2632'(R)</p><p>2618'(R)</p><p>2637'(R)</p><p>2637'(R)</p><p>2627'(R)</p><p>2700'(R)</p><p>1005'</p><p>895'</p><p>Azimuth - 103°34' 917'</p><p>Bottom Hole Location 700' F/SL 1900' F/WL</p></div>	<div><p>2632'(R)</p><p>Lot 2</p><p>Lot 1</p><p>Lot 3</p><p>Lot 4</p><p>11</p></div>	<div><p>¹⁷ OPERATOR CERTIFICATION</p><p>I hereby certify that the information contained herein is true and complete to the best of my knowledge and belief.</p><p><i>Cherry Hlava</i></p><p>Signature</p><p><i>Cherry Hlava</i></p><p>Printed Name</p><p><i>Regulatory Analyst</i></p><p>Title</p><p><i>2-22-07</i></p><p>Date</p><p>¹⁸ SURVEYOR CERTIFICATION</p><p>I hereby certify that the well location shown on this plat was plotted from field notes of actual surveys made by me or under my supervision, and that the same is true and correct to the best of my belief.</p><p>Restaked: October 31, 2006</p><p>February 1, 2006</p><p>Date of Survey</p><p>Signature and Seal of Professional Surveyor</p><p><i>GARY D. VANDY</i></p><p>NEW MEXICO</p><p>REGISTERED PROFESSIONAL LAND SURVEYOR</p><p>7016</p><p>Certificate Number</p></div>
---	---	---

District I

1625 N. French Dr., Hobbs, NM 88240

District II

1301 W. Grand Ave., Artesia, NM 88210

District III

1000 Rio Brazos Rd., Aztec, NM 87410

District IV

1220 S. St. Francis Dr., Santa Fe, NM 87505

OIL CONSERVATION DIVISION
1220 South St. Francis Dr.
Santa Fe, NM 87505

WELL API NO.

5. Indicate Type of Lease

STATE ☐ FEE ☐

6. State Oil & Gas Lease No.

7. Lease Name or Unit Agreement Name
STOREY B

8. Well Number

1 N

9. OGRID Number

000778

10. Pool name or Wildcat

Basin Dakota & Blanco Mesaverde

SUNDRY NOTICES AND REPORTS ON WELLS

(DO NOT USE THIS FORM FOR PROPOSALS TO DRILL OR TO DEEPEN OR PLUG BACK TO A DIFFERENT RESERVOIR. USE "APPLICATION FOR PERMIT" (FORM C-101) FOR SUCH PROPOSALS.)

1. Type of Well: Oil Well ☐ Gas Well ☒ Other

2. Name of Operator

BP AMERICA PRODUCTION COMPANY

3. Address of Operator

P.O. BOX 3092 HOUSTON, TX 77079-2064

4. Well Location

Unit Letter NM : 708 895 feet from the South line and 1005 feet from the West line
Section 11 Township 30N Range 11W NMPM SAN JUAN County

11. Elevation (Show whether DR, RKB, RT, GR, etc.)
5829'

Pit or Below-grade Tank Application ☒ or Closure ☐

Pit type DRILLING Depth to Groundwater 500 Distance from nearest fresh water well 71000 Distance from nearest surface water 8200

Pit Liner Thickness: 12 mil Below-Grade Tank: Volume bbls; Construction Material

12. Check Appropriate Box to Indicate Nature of Notice, Report or Other Data

NOTICE OF INTENTION TO:

PERFORM REMEDIAL WORK ☐ PLUG AND ABANDON ☐
TEMPORARILY ABANDON ☐ CHANGE PLANS ☐
PULL OR ALTER CASING ☐ MULTIPLE COMPL ☐

SUBSEQUENT REPORT OF:

REMEDIAL WORK ☐ ALTERING CASING ☐
COMMENCE DRILLING OPNS. ☐ P AND A ☐
CASING/CEMENT JOB ☐

OTHER: LINED DRILLING PIT ☒

OTHER: ☐

13. Describe proposed or completed operations. (Clearly state all pertinent details, and give pertinent dates, including estimated date of starting any proposed work). SEE RULE 1103. For Multiple Completions: Attach wellbore diagram of proposed completion or recompletion.

Construct a lined drilling pit per BP America – San Juan Basin Drilling/ Workover Pit Construction Plan issued date of 11/17/2004. Pit will be closed according to closure plan on file.

I hereby certify that the information above is true and complete to the best of my knowledge and belief. I further certify that any pit or below-grade tank has been/will be constructed or closed according to NMOCD guidelines ☒, a general permit ☐ or an (attached) alternative OCD-approved plan ☐.

SIGNATURE Cherry Hlava TITLE Regulatory Analyst DATE 06/30/2006

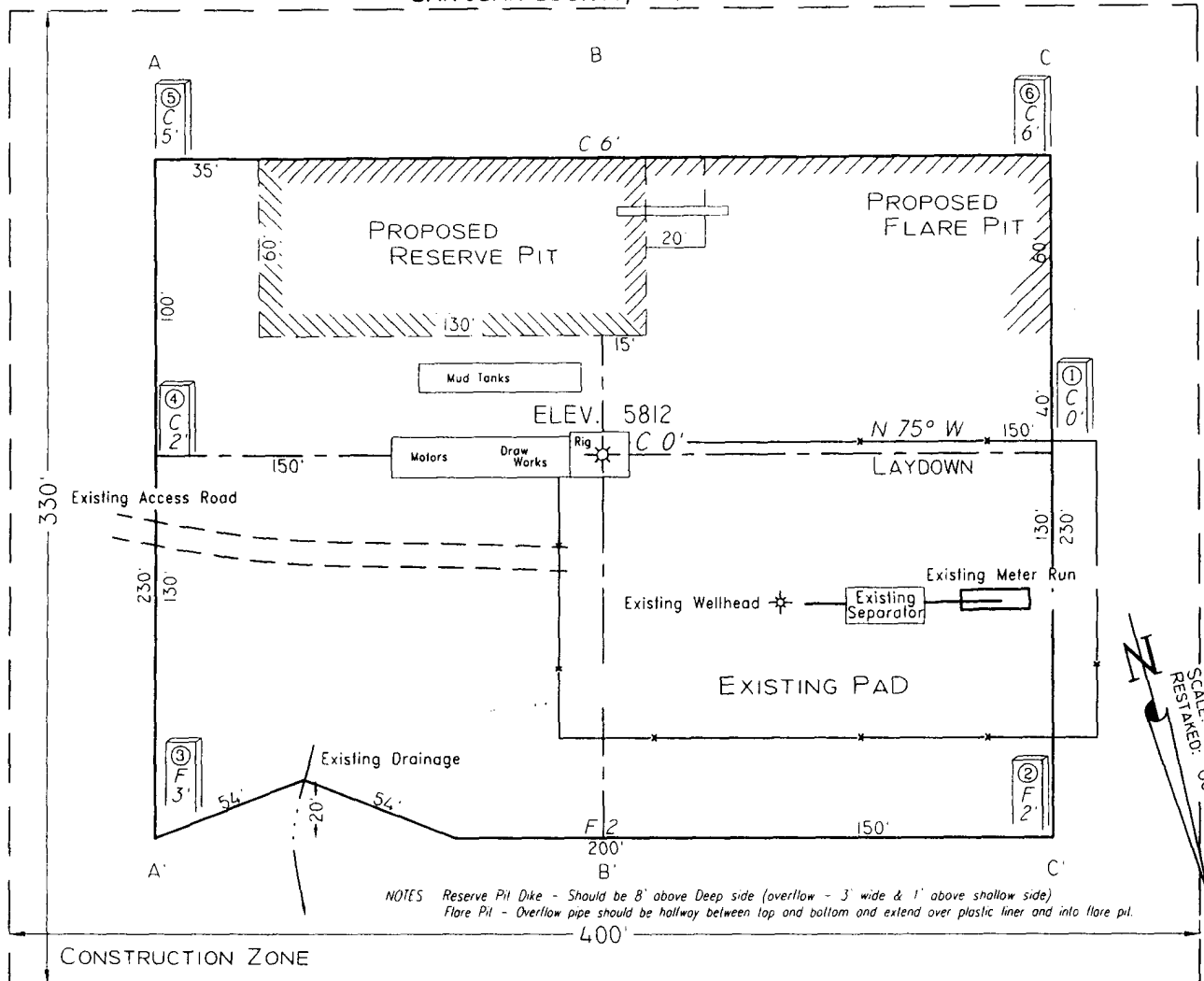
Type or print name Cherry Hlava E-mail address: hlavac@bp.com Telephone No. 281-366-4081

For State Use Only

APPROVED BY: [Signature] TITLE DEPUTY OIL & GAS INSPECTOR, DIST. #1 DATE MAR 27 2007
Conditions of Approval (if any): Unfavorable area guidelines to be in force.

PAD LAYOUT PLAN & PROFILE
BP AMERICA PRODUCTION COMPANY
 Storey B #1N
 895' F/SL 1005' F/WL
 SEC. 11, T30N, R11W, N.M.P.M.
 SAN JUAN COUNTY, NEW MEXICO

Lat: 36.82168°
 Long: 107.96626° (83)

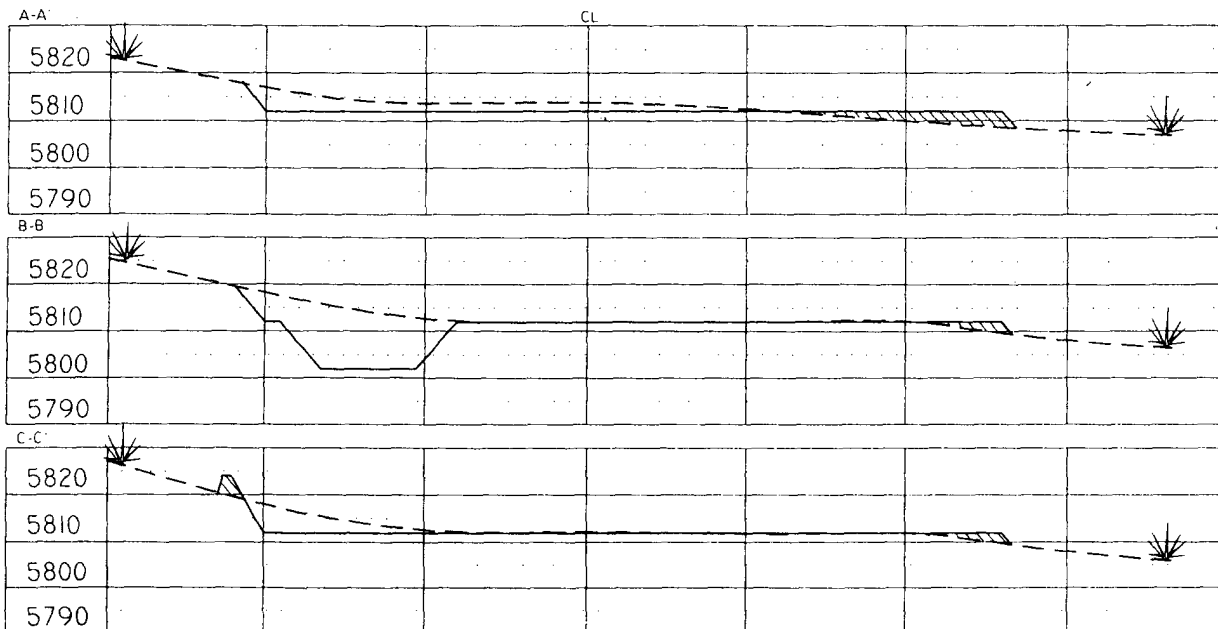


NOTES: Reserve Pit Dike - Should be 8' above Deep side (overflow - 3' wide & 1' above shallow side)
 Flare Pit - Overflow pipe should be halfway between top and bottom and extend over plastic liner and into flare pit.

SCALE: 1" = 60'-HORIZ.
 1" = 40'-VERT.
 RESUBMITTED: OCTOBER 31, 2006

Area of Construction Zone - 330'x400' or 3.03 acres, more or less

SCALE: 1" = 60'-HORIZ.
 1" = 40'-VERT.



NOTE: Lat & Long are for mapping purposes only and are not to be relied upon for re-establishment of well location.

NOTE: Contractor should call One-Call for location of any marked or unmarked buried pipelines or cables on well pad and/or access road at least two (2) working days prior to construction

Cuts and fills shown are approximate - final finished elevation is to be adjusted so earthwork will balance. Corner stakes are approximate and do not include additional areas needed for sideslopes and drainages. Final Pad Dimensions are to be verified by Contractor

VANN SURVEYS
 P. O. Box 1306
 Farmington, NM

BP AMERICA PRODUCTION COMPANY

DRILLING AND COMPLETION PROGRAM

3/10/2006

Lease: Storey B	Well Name & No. Storey B #1N	Field: Blanco Mesaverde/Basin Dakota
County: San Juan, New Mexico	Surface Location: 11-30N-11W: 895' FSL, 1005' FWL	
Minerals: Federal	Surface:	
Rig: Aztec 184	BH Location: 700 FSL x 1900 FWL, Lat: 36.8211908, Long: -107.9626320	

OBJECTIVE: Drill 200' below the top of the Two Wells Mbr, set 4-1/2" production casing, Stimulate DK, MF, and PL intervals.

METHOD OF DRILLING		APPROXIMATE DEPTHS OF GEOLOGICAL MARKER			
TYPE OF TOOLS	DEPTH OF DRILLING	Actual GL: 5829	Estimated KB: 5,843.0'		
Rotary	0 - TD	Marker	SUBSEA	TVD	APPROX. MD

LOG PROGRAM					
Type	Depth Interval				
RST	TD to 2000' md	Ojo Alamo	4,941'	902'	911'
		Kirtland	4,830'	1,013'	1,026'
		Fruitland	4,154'	1,689'	1,726'
		Fruitland Coal	3,830'	2,013'	2,062'
		Pictured Cliffs	3,532'	2,311'	2,370'
		Lewis	3,329'	2,514'	2,580'
Cased Hole		Cliff House	1,978'	3,865'	3,978'
RST	TD to 2000'	Menefee	1,723'	4,120'	4,235'
CBL	Identify 4 1/2" cement top	Point Lookout	1,233'	4,610'	4,725'

REMARKS:	Mancos	883'	4,960'	5,075'
The SHL & BHL are near S-edge of drill block and can be no further south.	Greenhorn	-760'	6,603'	6,718'
	Graneros (bent,mkr)	-812'	6,655'	6,770'
Report all flares.	Two Wells	-868'	6,711'	6,826'
The recommended TD is intended to penetrate the upper 20' of the ENCN, so that log data can be acquired over the L.CBRO/U.ENCN contact. See attached Xsection.	Paguate	-943'	6,786'	6,901'
	Cubero	-984'	6,827'	6,942'
	L. Cubero	-1,027'	6,870'	6,985'
The intermediate casing should be set 100' into the MENF for normal air drilling to TD. CLFH is expected to be 'wet'.	Encinal Cyn	-1,048'	6,891'	7,006'
The CLFH may be somewhat depleted. Losses in this zone might be expected in a mud-drilled well.	Burro Canyon	NP	NP	NP
	TOTAL DEPTH:	-1,068'	6,911'	7,026'
	# Probable completion interval		* Possible Pay	

SPECIAL TESTS		DRILL CUTTING SAMPLES		DRILLING TIME	
TYPE		FREQUENCY	DEPTH	FREQUENCY	DEPTH
None		30'/10' intervals	2,680' to TD	Geologist	0 - TD
REMARKS:					

MUD PROGRAM:					
Interval	TypeMud	#/gal	Vis, sec/qt	/30 min	Other Specification
200'	Spud	8.8 - 9.0	Sufficient to clean hole.		
2,680'	Water/LSND	8.4 - 9.0		<9	Sweep hole while whilst water drilling, LCM onsite
7,026'	Air	1	1000 cfm for hammer		Volume sufficient to maintain a stable and clean wellbore

CASING PROGRAM:							
CasingString	Depth	Size	Casing Size	Grade, Thread	Weight	Landing Point	Cement
Surface/Conductor	200'	13 1/2"	9-5/8"	H-40 ST&C	32#		cmt to surface
Intermediate 1	2,680'	8-3/4"	7"	J/K-55 ST&C	20#	100' below LWIS	cmt to surface
Production	7,026'	6-1/4"	4-1/2"	P-110	11.6#	DKOT	150' inside Intermediate - TOC survey required

CORING PROGRAM:	
None	

COMPLETION PROGRAM:	
Rigless, 2-3 Stage Limited Entry Hydraulic Frac, FMC Unihead	

GENERAL REMARKS:	
Notify BLM/NMOC 24 hours prior to Spud, BOP testing, and Casing and Cementing.	

BOP Pressure Testing Requirements			
Formation	Depth	Anticipated bottom hole pressure	Max anticipated surface pressure**
Cliffhouse	3,865'	500	0
Point Lookout	4,610'	600	0
Dakota	6,711'	2600	1123.58

Requested BOP Pressure Test Exception = 1500 psi

** Note: Determined using the following formula: ABHP - (.22*TVD) = ASP

Form 46 Reviewed by:	Logging program reviewed by:			
PREPARED BY:	APPROVED:	DATE:	APPROVED:	DATE:
HGJ	JMP	10-Mar-06		
Form 46 7-84bw	For Drilling Dept.		For Production Dept.	

Cementing Program

Revision 3/13/07

Well Name: Storey B #1N

Location: 11-30N-11W: 895' FSL, 1005' FWL

County: San Juan

State: New Mexico

Well Flac

Formation: Blanco Mesaverde/Basin Dakota

KB Elev (est) 5843

GL Elev. (est) 5829

Casing Program:

Casing String	Est. Depth (ft.)	Hole Size (in.)	Casing Size (in.)	Thread	TOC (ft.)	Stage Tool Or TOL (ft.)	Cmt Cir. Out (bbl.)
Surface	200	13.5	9.625	ST&C	Surface	NA	
Intermediate	2680	8.75	7	LT&C	Surface	NA	
Production -	7026	6.25	4.5	ST&C	2530	NA	

Casing Properties:

(No Safety Factor Included)

Casing String	Size (in.)	Weight (lb/ft)	Grade	Burst (psi.)	Collapse (psi.)	Joint St. (1000 lbs.)	Capacity (bbl/ft.)	Drift (in.)
Surface	9.625	32	H-40	2270	1400	254	0.0787	8.845
Intermediate	7	20	K-55	3740	2270	234	0.0405	6.456
Production -	4.5	11.6	J-55	5350	4960	154	0.0155	3.875

Mud Program

Apx. Interval (ft.)	Mud Type	Mud Weight
------------------------	----------	------------

Recommended Mud Properties Prio Cementing:

PV <20

YP <10

Fluid Loss <15

0 - SCP	Water/Spud	8.6-9.2
SCP - ICP	Water/LSND	8.6-9.2
ICP - ICP2	Gas/Air Mist	NA
ICP2 - TD	LSND	8.6 - 9.2

Cementing Program:

	Surface	Intermediate	Production
Excess %, Lead	100	75	40
Excess %, Tail	NA	0	40
BHST (est deg. F)	75	123	163
Special Instructions	1,6,7	1,6,8	2,4,6

1. Do not wash pumps and lines.
2. Wash pumps and lines.
3. Reverse out
4. Run Blend Test on Cement
5. Record Rate, Pressure, and Density on 3.5" disk
6. Confirm densitometer with pressurized mud scales
7. 1" cement to surface if cement is not circulated.
8. If cement is not circulated to surface, run temp. survey 10-12 hr. after landing plug.

Notes:

*Do not wash up on top of plug. Wash lines before displacing production cement job to minimize drillout.

Surface:

Preflush	20 bbl.	Fresh Water	
Slurry 1	154 sx Class C Cement		195 cuft
TOC@Surface	+ 2% CaCl2 (accelerator)		
			0.4887 cuft/ft OH

Slurry Properties:

	Density (lb/gal)	Yield (ft ³ /sk)	Water (gal/sk)
Slurry 1	15.2	1.27	5.8

Casing Equipment:

- 9-5/8", 8R, ST&C
- 1 Guide Shoe
- 1 Top Wooden Plug
- 1 Autofill insert float valve
- Centralizers, as needed
- 1 Stop Ring
- 1 Thread Lock Compound

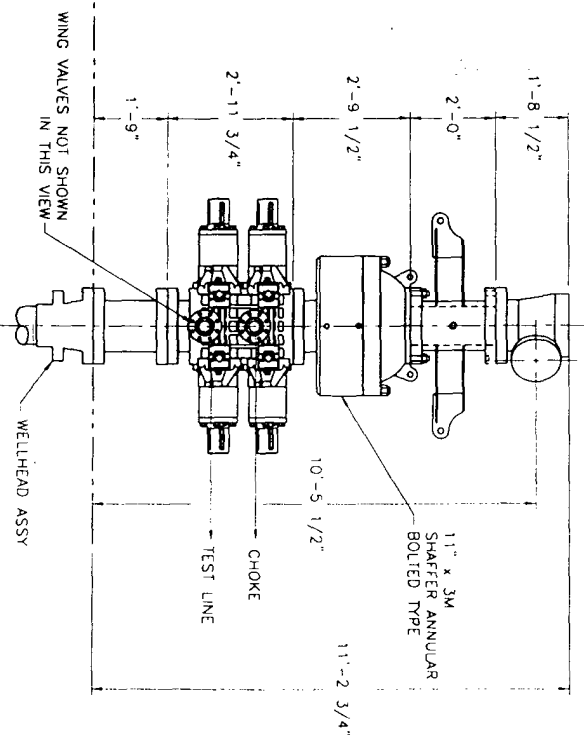
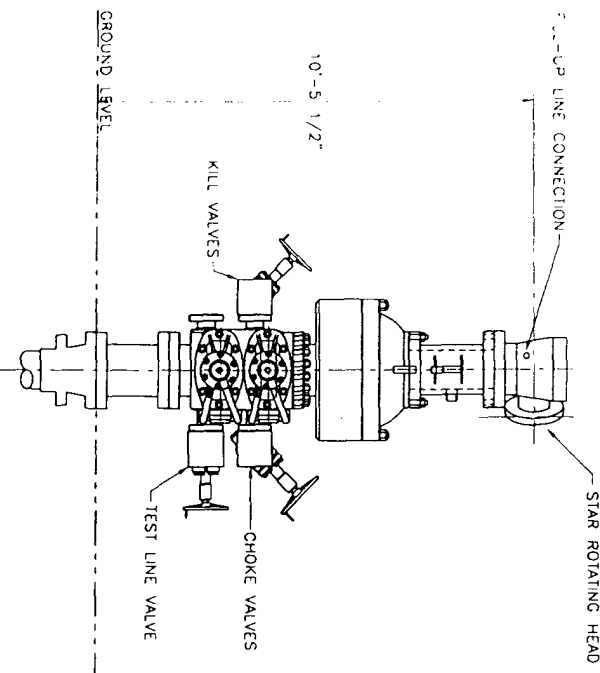
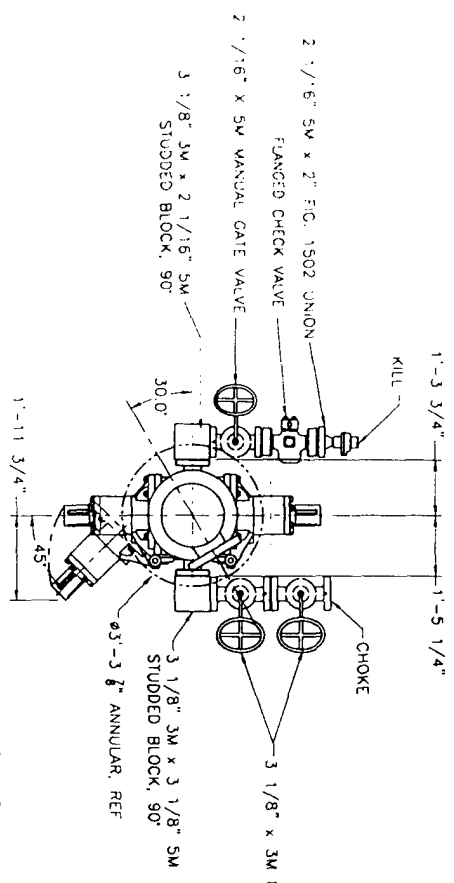
Cementing Program

Intermediate:

Fresh Water	20 bbl	fresh water	
Lead		211 sx Class "G" Cement	556 cuft
Slurry 1		+ 3% D79 extender	
TOC@Surface		+ 1/4 #/sk. Cellophane Flake	
		+ 5 lb/sk Gilsonite	
Tail		59 sx 50/50 Class "G"/Poz	75 cuft
Slurry 2		+ 2% gel (extender)	
500 ft fill		+ 1/4 #/sk. Cellophane Flake	0.1503 cuft/ft OH
		+ 2% CaCl ₂ (accelerator)	0.1746 cuft/ft csg ann
		+ 5 lb/sk Gilsonite	
Slurry Properties:	Density	Yield	Water
	(lb/gal)	(ft ³ /sk)	(gal/sk)
Slurry 1	11.4	2.63	15.8
Slurry 2	13.5	1.27	5.72
Casing Equipment:	7", 8R, ST&C		
	1 Float Shoe (autofill with minimal LCM in mud)		
	1 Float Collar (autofill with minimal LCM in mud)		
	1 Stop Ring		
	Centralizers as needed		
	1 Top Rubber Plug		
	1 Thread Lock Compound		

Production:

Fresh Water	10 bbl	CW100	
Lead		191 LiteCrete D961 / D124 / D154	481 cuft
Slurry 1		+ 0.03 gps D47 antifoam	
TOC, 150' above 7" shoe		+ 0.5% D112 fluid loss	
		+ 0.11% D65 TIC	
Tail		145 sx 50/50 Class "G"/Poz	208 cuft
Slurry 2		+ 5% D20 gel (extender)	
1451 ft fill		+ 0.1% D46 antifoam	
		+ 1/4 #/sk. Cellophane Flake	
		+ 0.25% D167 Fluid Loss	
		+ 5 lb/sk Gilsonite	
		+ 0.1% d800, retarder	
		+ 0.15% D65, dispersant	
			0.1026 cuft/ft OH
Slurry Properties:	Density	Yield	Water
	(lb/gal)	(ft ³ /sk)	(gal/sk)
Slurry 1	9.5	2.52	6.38
Slurry 2	13	1.44	6.5
			Top of Mancos
			5075
Casing Equipment:	4-1/2", 8R, ST&C		
	1 Float Shoe (autofill with minimal LCM in mud)		
	1 Float Collar (autofill with minimal LCM in mud)		
	1 Stop Ring		
	Centralizers, as needed		
	1 Top Rubber Plug		
	1 Thread Lock Compound		



COMPONENT	APPROXIMATE WEIGHT
ROTATING HEAD	2,100 lbs.
SPOOL, ANNUAL-ROTATING HEAD	600 lbs.
ANNULAR	5,843 lbs.
BOP DOUBLE RAM	4,560 lbs.
(4) RAM ELEMENTS	444 lbs.
(3) 3 1/8" x 5M VALVES	846 lbs.
(2) 2 1/16" x 5M VALVES	360 lbs.
(3) BLOCKS	960 lbs.
RINGS AND BOLTS	400 lbs.
SPACER SPOOL	500 lbs.
TOTAL WEIGHT	16,613 lbs.

THIS DRAWING AND ALL INFORMATION CONTAINED HEREIN ARE THE PROPERTY OF HELMERICH & PAYNE INTERNATIONAL DRILLING CO. AND ARE NOT TO BE REPRODUCED OR TRANSMITTED IN ANY FORM OR BY ANY MEANS, ELECTRONIC OR MECHANICAL, INCLUDING PHOTOCOPYING, RECORDING, OR BY ANY INFORMATION STORAGE AND RETRIEVAL SYSTEM, WITHOUT THE WRITTEN PERMISSION OF HELMERICH & PAYNE INTERNATIONAL DRILLING CO.

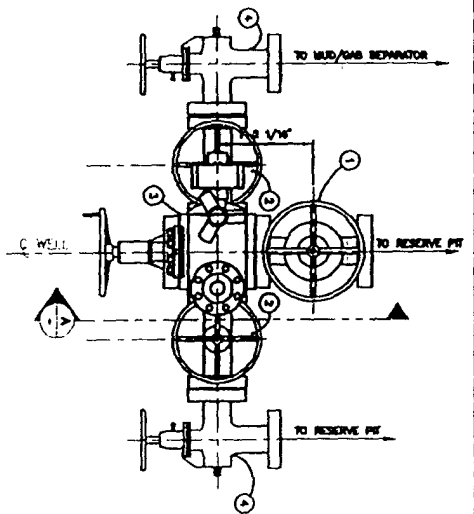
NOTES:
1. ALL BOP RAMS SHOWN ARE SHAFTER MODEL LWS.
11" x 3,000 PSI WP - FLANGED BOTTOM AND STUDDED TOP

REV	DATE	DESCRIPTION	BY
1			
2			
3			
4			
5			
6			
7			
8			
9			
10			

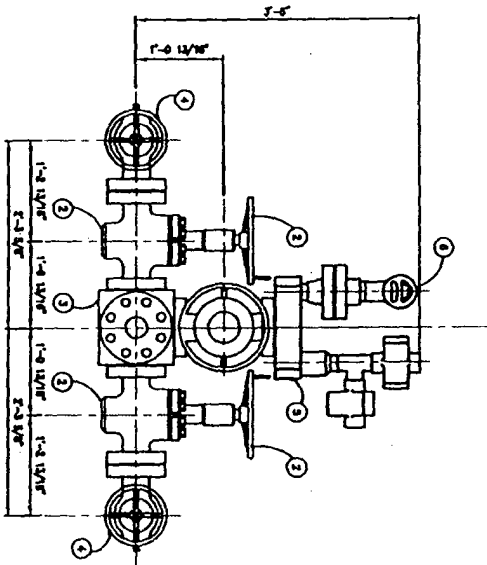
HELMERICH & PAYNE INTERNATIONAL DRILLING CO.	
11-3M BOP EQUIPMENT GENERAL ARRANGEMENT	
CUSTOMER: BP PROJECT: F44 DRAWN: WJS DATE: 07.17.06 SCALE: 1/2"=1'-0"	SHEET: 1 OF 3 REV: 00954

PRELIMINARY
08.05.06
DRAFTSMAN
ENGINEER

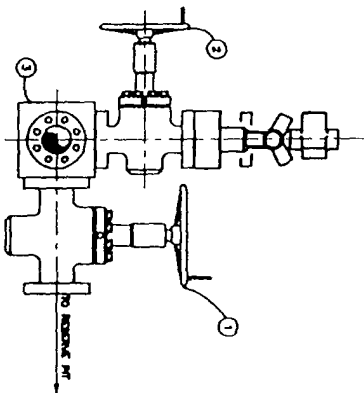
GOALS & OBJECTIVES



PLAN VIEW
CHOKE MANIFOLD



ELEVATION VIEW



五、

- LEGEND
- 1 3 1/8"-SM FLANGED END GATE VALVE
 - 2 1/16"-SM FLANGED END GATE VALVE
 - 3 BLOCK WITH TRANSMITTER FLANGE AND PRESSURE GAUGE
 - 4 2 1/16"-SM ADJUSTABLE CHOKE
 - 5 TRANSMITTER FLANGE
 - 6 PRESSURE GAUGE

PROPRIETARY

MANIFOLD		CHOKE MANIFOLD DETAIL ARRANGEMENT	
ITEM NO.	DESCRIPTION	QTY	UNIT
1	CHOKE MANIFOLD	1	PC
2	CHOKE MANIFOLD	1	PC
3	CHOKE MANIFOLD	1	PC
4	CHOKE MANIFOLD	1	PC
5	CHOKE MANIFOLD	1	PC
6	CHOKE MANIFOLD	1	PC
7	CHOKE MANIFOLD	1	PC
8	CHOKE MANIFOLD	1	PC
9	CHOKE MANIFOLD	1	PC
10	CHOKE MANIFOLD	1	PC
11	CHOKE MANIFOLD	1	PC
12	CHOKE MANIFOLD	1	PC
13	CHOKE MANIFOLD	1	PC
14	CHOKE MANIFOLD	1	PC
15	CHOKE MANIFOLD	1	PC
16	CHOKE MANIFOLD	1	PC
17	CHOKE MANIFOLD	1	PC
18	CHOKE MANIFOLD	1	PC
19	CHOKE MANIFOLD	1	PC
20	CHOKE MANIFOLD	1	PC
21	CHOKE MANIFOLD	1	PC
22	CHOKE MANIFOLD	1	PC
23	CHOKE MANIFOLD	1	PC
24	CHOKE MANIFOLD	1	PC
25	CHOKE MANIFOLD	1	PC
26	CHOKE MANIFOLD	1	PC
27	CHOKE MANIFOLD	1	PC
28	CHOKE MANIFOLD	1	PC
29	CHOKE MANIFOLD	1	PC
30	CHOKE MANIFOLD	1	PC
31	CHOKE MANIFOLD	1	PC
32	CHOKE MANIFOLD	1	PC
33	CHOKE MANIFOLD	1	PC
34	CHOKE MANIFOLD	1	PC
35	CHOKE MANIFOLD	1	PC
36	CHOKE MANIFOLD	1	PC
37	CHOKE MANIFOLD	1	PC
38	CHOKE MANIFOLD	1	PC
39	CHOKE MANIFOLD	1	PC
40	CHOKE MANIFOLD	1	PC
41	CHOKE MANIFOLD	1	PC
42	CHOKE MANIFOLD	1	PC
43	CHOKE MANIFOLD	1	PC
44	CHOKE MANIFOLD	1	PC
45	CHOKE MANIFOLD	1	PC
46	CHOKE MANIFOLD	1	PC
47	CHOKE MANIFOLD	1	PC
48	CHOKE MANIFOLD	1	PC
49	CHOKE MANIFOLD	1	PC
50	CHOKE MANIFOLD	1	PC
51	CHOKE MANIFOLD	1	PC
52	CHOKE MANIFOLD	1	PC
53	CHOKE MANIFOLD	1	PC
54	CHOKE MANIFOLD	1	PC
55	CHOKE MANIFOLD	1	PC
56	CHOKE MANIFOLD	1	PC
57	CHOKE MANIFOLD	1	PC
58	CHOKE MANIFOLD	1	PC
59	CHOKE MANIFOLD	1	PC
60	CHOKE MANIFOLD	1	PC
61	CHOKE MANIFOLD	1	PC
62	CHOKE MANIFOLD	1	PC
63	CHOKE MANIFOLD	1	PC
64	CHOKE MANIFOLD	1	PC
65	CHOKE MANIFOLD	1	PC
66	CHOKE MANIFOLD	1	PC
67	CHOKE MANIFOLD	1	PC
68	CHOKE MANIFOLD	1	PC
69	CHOKE MANIFOLD	1	PC
70	CHOKE MANIFOLD	1	PC
71	CHOKE MANIFOLD	1	PC
72	CHOKE MANIFOLD	1	PC
73	CHOKE MANIFOLD	1	PC
74	CHOKE MANIFOLD	1	PC
75	CHOKE MANIFOLD	1	PC
76	CHOKE MANIFOLD	1	PC
77	CHOKE MANIFOLD	1	PC
78	CHOKE MANIFOLD	1	PC
79	CHOKE MANIFOLD	1	PC
80	CHOKE MANIFOLD	1	PC
81	CHOKE MANIFOLD	1	PC
82	CHOKE MANIFOLD	1	PC
83	CHOKE MANIFOLD	1	PC
84	CHOKE MANIFOLD	1	PC
85	CHOKE MANIFOLD	1	PC
86	CHOKE MANIFOLD	1	PC
87	CHOKE MANIFOLD	1	PC
88	CHOKE MANIFOLD	1	PC
89	CHOKE MANIFOLD	1	PC
90	CHOKE MANIFOLD	1	PC
91	CHOKE MANIFOLD	1	PC
92	CHOKE MANIFOLD	1	PC
93	CHOKE MANIFOLD	1	PC
94	CHOKE MANIFOLD	1	PC
95	CHOKE MANIFOLD	1	PC
96	CHOKE MANIFOLD	1	PC
97	CHOKE MANIFOLD	1	PC
98	CHOKE MANIFOLD	1	PC
99	CHOKE MANIFOLD	1	PC
100	CHOKE MANIFOLD	1	PC

ISSUED FOR
FABRICATION
December 08-2006
DRAFTSMAN _____
BYOWNER _____



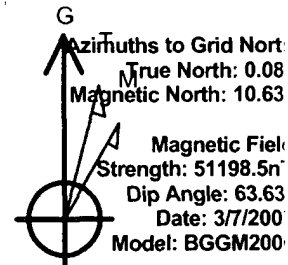
Scientific Drilling
Directional Drilling Operations

Project: Western - San Juan South (NAD 83)
Site: SEC 11-T30N-R11W
Well: STOREY B #1N
Wellbore: Wellbore #1
Plan: Plan #1



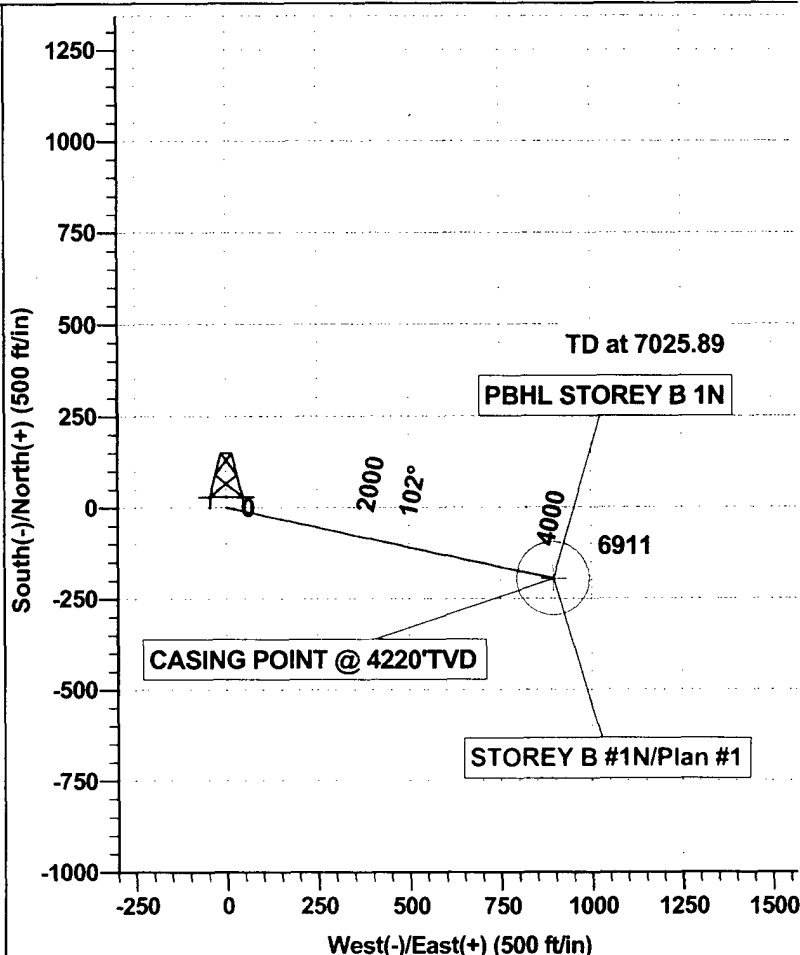
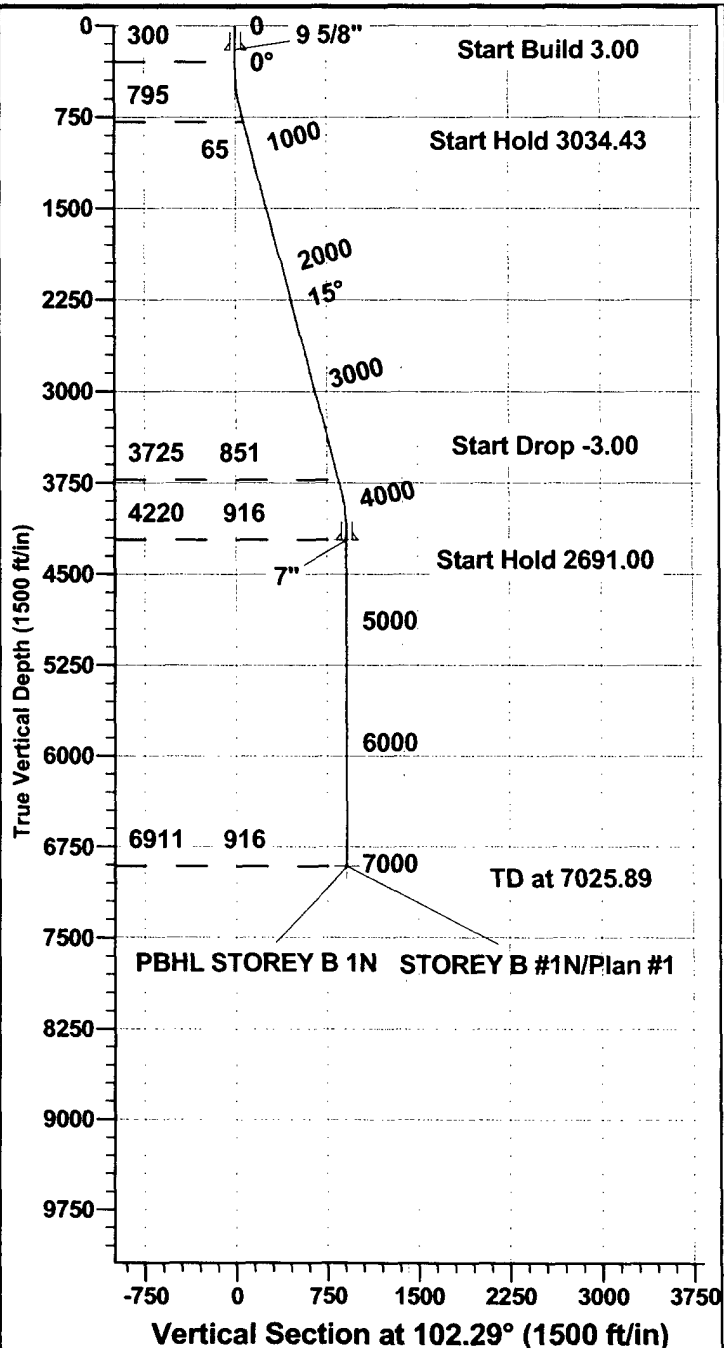
SECTION DETAILS

Sec	MD	Inc	Azi	TVD	+N/-S	+E/-W	DLeg	TFace	VSec	Target
1	0.00	0.00	0.00	0.00	0.00	0.00	0.00	0.00	0.00	
2	300.00	0.00	0.00	300.00	0.00	0.00	0.00	0.00	0.00	
3	800.23	15.01	102.29	794.53	-13.87	63.64	3.00	102.29	65.10	
4	3834.66	15.01	102.29	3725.47	-181.13	831.36	0.00	0.00	850.42	
5	4334.89	0.00	0.00	4220.00	-195.00	895.00	3.00	180.00	915.52	CASING POINT @ 4220'TVD
6	7025.89	0.00	0.00	6911.00	-195.00	895.00	0.00	0.00	915.52	PBHL STOREY B 1N



WELLBORE TARGET DETAILS (MAP CO-ORDINATES AND LAT/LONG)

Name	TVD	+N/-S	+E/-W	Northing	Easting	Latitude	Longitude	Shape
CASING POINT @ 4220'TVD	4220.00	-195.00	895.00	2118278.60	2685249.54	36°49'16.465N	107°57'45.446W	Point
PBHL STOREY B 1N	6911.00	-195.00	895.00	2118278.60	2685249.54	36°49'16.465N	107°57'45.446W	Circle (Radius: 100.00)



WELL DETAILS: STOREY B #1N

Ground Level: 5829.00	
Northing 2118473.59	Easting 2684354.61
Latitude 36°49'18.381N	Longitude 107°57'56.457W

PROJECT DETAILS: Western - San Juan South (NAD 83)

Geodetic System: US State Plane 1983
Datum: North American Datum 1983
Ellipsoid: GRS 1980
Zone: New Mexico Western Zone

System Datum: Mean Sea Level

Additional Operator Remarks
Storey B 1N
APD

NOTICE OF STAKING WAS SUBMITTED ON 03/08/2006

BP America Production Company respectfully requests permission to drill the subject well to a total depth of approximately 6911' MD. Complete in the Basin Dakota Pool, isolate the Dakota; complete into the Blanco Mesaverde, establish a production rate; drill out the bridge plug and commingle production downhole.

Application for Downhole Commingling authority (NMOCD order R-11363) will be submitted to all appropriate for approval after Permit to Drill has been approved.

If terrain allows it is our intent to pre-set the 9 5/8" casing on the above mentioned well by drilling a surface hole with air/air mist in lieu of drilling mud and the surface casing be cemented with 94.5 cu/ft type I-II, 20% FLYASH, 14.5 PPG, 7.41 gal/sk, 1.61 cf/sk Yield, 80 DEG BHST ready mix cement. If the area will not allow for pre-set the approved cement program will be followed.

SUPPLEMENTAL TO SURFACE USE PLAN

New Facilities:

A 4.5" diameter buried steel pipeline that is +/- 350 feet in length will be constructed. The pipe wall thickness is .156 and the pipe wall strength is 42,000#. It will be adjacent to the access road and tie the well into an existing gas meter operated by BP America Production Company. The pipeline will not be used to transport gas to drill the well. After the well is spud the pipeline will be authorized by a right-of-way issued by El Paso Field Services.

APD/ROW

UNITED STATES
DEPARTMENT OF THE INTERIOR
BUREAU OF LAND MANAGEMENT

SUNDRY NOTICES AND REPORTS ON WELLS

Do not use this form for proposals to drill or to re-enter an
Abandoned well. Use Form 3160-3 (APD) for such proposals.

FORM APPROVED
OMB No. 1004-0135
Expires November 30, 2000

5. Lease Serial No.

SF-080704

6. If Indian Allottee or tribe Name

7. If Unit or CA/Agreement. Name and/or No.

SUBMIT IN TRIPLICATE - Other instructions on reverse side

1. Type of Well

☐

Oil Well

☒

Gas Well

☐

Other

8. Well Name and No.

STOREY B IN

2. Name of Operator

BP AMERICA PRODUCTION COMPANY

9. API Well No.

30-045-33831

3a. Address

PO BOX 3092 HOUSTON, TX 77253

3b. Phone No. (include area code)

281-366-7148

10. Field and Pool, or Exploratory Area

BASIN DAKOTA & BLANCO MESAVERDE

4. Location of Well (Footage, Sec., T., R., M., or Survey Description)

895 FSL & 1005 FWL SESW SECTION 11 T30N & R11W

11. County or Parish, State

SAN JUAN, NM

12. CHECK APPROPRIATE BOX(ES) TO INDICATE NATURE OR NOTICE, REPORT, OR OTHER DATA

TYPE OF SUBMISSION

☒

Notice of Intent

☐

Subsequent Report

☐

Final Abandonment Notice

TYPE OF ACTION

☐

Acidize

☐

Alter Casing

☐

Casing Repair

☐

Change Plans

☐

Convert to Injection

☐

Deepen

☐

Fracture Treat

☐

New Construction

☐

Plug and Abandon

☐

Plug Back

☐

Production (Start/Resume)

☐

Reclamation

☐

Recomplete

☐

Water Disposal

☐

Water shut-Off

☐

Well Integrity

☒

Other Change BOP

13. Describe Proposed or Completed Operation (clearly state all pertinent details, including estimated starting date of any proposed work and approximate duration thereof. If the proposal is to deepen directionally or recomplete horizontally, give subsurface locations and measured and true vertical depths of all pertinent markers and zones. Attach the Bond under which the work will be performed or provide the Bond No. on file with BLM/BIA. Required subsequent reports shall be filed within 30 days following completion of the involved operations. If the operation results in a multiple completion or recompletion in a new interval, a Form 3160-4 shall be filed once testing has been completed. Final Abandonment Notices shall be filed only after all requirements, including reclamation, have been completed, and the operator has determined that the site is ready for final inspection.

BP AMERICA SUBMITTED APD ON 06/30/2006 AND IS WAITING ON APD APPROVAL.

DUE TO CHANGE IN DRILLING RIG (H & P 306) THE BOP DRAWING AND CHOKE MANIFOLD HAS CHANGED.
ATTACHED ARE THE UPDATED ARRANGEMENTS TO OUR ORIGINAL BOP DRAWING.

IF YOU NEED ANY ADDITIONAL INFORMATION PLEASE FEEL FREE TO CONTACT HARALD JORDAN @ 505-326-9202

14. I hereby certify that the foregoing is true and correct
Name (Printed/typed)

Toya Colvin

Title Regulatory Analyst

Signature

Date 02/06/07

THIS SPACE FOR FEDERAL OR STATE OFFICE USE

Approved by

Title

Date

Conditions of approval, if any, are attached. Approval of this notice does not warrant or certify that the applicant holds legal or equitable title to those rights in the subject lease which would entitle the applicant to conduct operations thereon.

Office

Title 18 U.S.C. Section 1001 and Title 43 U.S.C. Section 1212, make it a crime for any person knowingly and willfully to make to any department or agency of the United States any false, fictitious or fraudulent statements or representations as to any matter within its jurisdiction.

HOLD C104 FOR Directional survey

NMOCD

NOTIFY AZTEC OGD 24hrs
IN TIME TO WITNESS copy cement

UNITED STATES
DEPARTMENT OF THE INTERIOR
BUREAU OF LAND MANAGEMENT

FORM APPROVED
OMB No. 1004-0135
Expires November 30, 2000

SUNDRY NOTICES AND REPORTS ON WELLS
*Do not use this form for proposals to drill or to re-enter an
Abandoned well. Use Form 3160-3 (APD) for such proposals.*

5. Lease Serial No.

SF - 080704

6. Allottee or tribe Name

If Unit or CA/Agreement, Name and/or No.

SUBMIT IN TRIPLICATE - Other instructions on reverse side

RECEIVED
210 FARMINGTON NM

RCVD MAR22'07

1. Type of Well

☐ Oil Well



Gas Well



Other

8. Well Name and No.

Storey B 1N

OIL CONS. DIV.

DIST. 3

2. Name of Operator

BP AMERICA PRODUCTION COMPANY

9. API Well No.

New Well

3a. Address

PO BOX 3092 HOUSTON, TX 77253

3b. Phone No. (include area code)

281-366-4081

10. Field and Pool, or Exploratory Area

BASIN DAKOTA & BLANCO MESAVERDE

4. Location of Well (Footage, Sec., T., R., M., or Survey Description)

705' FSL & 1865' FWL; SEC 11 ~~T29N R08W~~ SESW Mer NMP
T30N R10W

11. County or Parish, State

SAN JUAN, NM

12. CHECK APPROPRIATE BOX(ES) TO INDICATE NATURE OR NOTICE, REPORT, OR OTHER DATA

TYPE OF SUBMISSION



Notice of Intent



Subsequent Report



Final Abandonment Notice

TYPE OF ACTION



Acidize



Deepen



Production (Start/Resume)



Water shut-Off



Alter Casing



Fracture Treat



Reclamation



Well Integrity



Casing Repair



New Construction



Recomplete



Other



Change Plans



Plug and Abandon



Water Disposal

SURFACE & BH
CHANGE



Convert to Injection



Plug Back

13. Describe Proposed or Completed Operation (clearly state all pertinent details, including estimated starting date of any proposed work and approximate duration thereof. If the proposal is to deepen directionally or recomplete horizontally, give subsurface locations and measured and true vertical depths of all pertinent markers and zones. Attach the Bond under which the work will be performed or provide the Bond No. on file with BLM/BIA. Required subsequent reports shall be filed within 30 days following completion of the involved operations. If the operation results in a multiple completion or recompletion in a new interval, a Form 3160-4 shall be filed once testing has been completed. Final Abandonment Notices shall be filed only after all requirements, including reclamation, have been completed, and the operator has determined that the site is ready for final inspection.

Original APD was submitted on 6/30/2006 and was not approved because the City of Aztec leased the surface location for recreational use therefore the City requests BP change the surface location. The City of Aztec has given approval of this new location.

BP respectfully request permission to change the drill plan from straight hole to directional.

The original surface location will change From: 705' FSL & 1865' FWL To: 895' FSL & 1005' FWL.

The New Bottom Hole location will be: 700' FSL & 1900' FWL.

BP will now utilize an existing well pad for the new surface location. Please see attached supporting documents

14. I hereby certify that the foregoing is true and correct

Name (Printed/typed)

Cherry Hlava

Title Regulatory Analyst

Signature

Cherry Hlava

Date 03/05/2007

THIS SPACE FOR FEDERAL OR STATE OFFICE USE

Approved by

Jim Lovel

Title

Acting AFM Minerals

Date

3/19/07

Conditions of approval, if any, are attached. Approval of this notice does not warrant or certify that the applicant holds legal or equitable title to those rights in the subject lease which would entitle the applicant to conduct operations thereon.

Office

Title 18 U.S.C. Section 1001 and Title 43 U.S.C. Section 1212, make it a crime for any person knowingly and willfully to make to any department or agency of the United States any false, fictitious or fraudulent statements or representations as to any matter within its jurisdiction.

NMOC