

30-045-22677

Form B-10, C
(May 1963)SUBMIT IN TRIPPLICATE*
(Other instructions on
reverse side)Form approved.
Budget Bureau No. 42-11433.UNITED STATES
DEPARTMENT OF THE INTERIOR
GEOLOGICAL SURVEY

APPLICATION FOR PERMIT TO DRILL, DEEPEN, OR PLUG BACK

1a. TYPE OF WORK

DRILL ☒DEEPEN ☐PLUG BACK ☐

b. TYPE OF WELL

OIL
WELL ☐GAS
WELL ☒OTHER ☐SINGLE
ZONE ☐MULTIPLE
ZONE ☐

2. NAME OF OPERATOR

Great Lakes Chemical Corporation

3. ADDRESS OF OPERATOR Minerals Management Inc., Suite 105,
501 Airport Drive, Farmington, New Mexico 874014. LOCATION OF WELL (Report location clearly and in accordance with any State requirements.)
At surface1840' FNL, 1750' FWL, SEC. 35, T27N, R8W
At proposed prod. zone

14. DISTANCE IN MILES AND DIRECTION FROM NEAREST TOWN OR POST OFFICE*

Southeast of Blanco, New Mexico

15. DISTANCE FROM PROPOSED*

LOCATION TO NEAREST
PROPERTY OR LEASE LINE, FT.
(Also to nearest drig. unit line, if any)

800

16. NO. OF ACRES IN LEASE

160

17. NO. OF ACRES ASSIGNED
TO THIS WELL

160

18. DISTANCE FROM PROPOSED LOCATION*
TO NEAREST WELL, DRILLING, COMPLETED,
OR APPLIED FOR, ON THIS LEASE, FT.

19. PROPOSED DEPTH

4700

20. ROTARY OR CABLE TOOLS

Rotary

21. ELEVATIONS (Show whether DP, NT, GR, etc.)

6110' GR

22. APPROX. DATE WORK WILL START*

September 1, 1977

PROPOSED Casing and CEMENTING PROGRAM

SIZE OF HOLE	SIZE OF CASING	FEET PER FOOT	SETTING DEPTH	QUANTITY OF CEMENT
12 1/4	8 5/8 (new)	24# K-55	200'	200 sx
7 7/8	4 1/2 (new)	10.5# K-55	4700'	per caliper log to surface

Great Lakes Chemical Corporation plans to drill this mesaverde development well. The surface formation is Wasach, with the Ojo Alamo water sand anticipated at 1225', Pictured Cliffs at 2200', Chacra at 3087', Cliff House at 3770', and Point Lookout at 4420'. The acreage dedication of this well is in compliance with New Mexico Oil Conservation Commission Order R-5395. A series 900 (3000 psi W.P.) Blowout Preventer will be used. The blowout preventer will be tested before drilling surface plug, with water base mud. Drill stem tests will be taken where necessary for evaluation. No abnormal pressures or temperatures are anticipated. Drilling should require approximately 10 days. The gas is dedicated.

AUG 16 1977 AUG 2 1977

IN ABOVE SPACE DESCRIBE PROPOSED PROGRAM: If proposal is to deepen or plug back, give data on present productive zone and proposed new productive zone. If proposal is to drill or deepen directionally, give pertinent data on subsurface geology and measured and true vertical depths. Give blowout preventer program, if any.

24.

SIGNED

TITLE

Area Manager

Minerals Management Inc. DATE 8-1-77

(This space for Federal or State office use)

PERMIT NO.

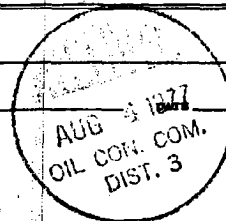
APPROVAL DATE

APPROVED BY

TITLE

CONDITIONS OF APPROVAL, IF ANY:

*See Instructions On Reverse Side



**NEW MEXICO OIL CONSERVATION COMMISSION
WELL LOCATION AND ACREAGE DEDICATION PLAT**

Form C-102
Supersedes C-128
Effective 1-1-65

All distances must be from the outer boundaries of the Section.

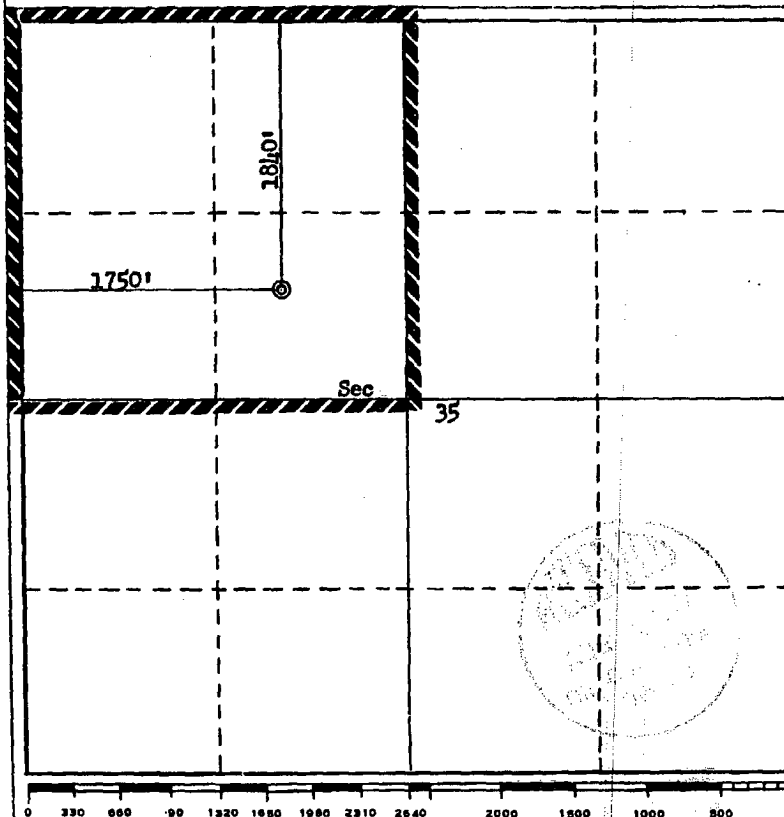
Operator Great Lakes Chemical Corporation			Lease Hammond		Well No. 5
Unit Letter F	Section 35	Township 27N	Range 8W	County San Juan	
Actual Footage Location of Well: 1840 feet from the North line and 1750 feet from the West line					
Ground Level Elev. 6110	Producing Formation Mesaverde		Pool Blanco Mesaverde	Dedicated Acreage: 160	Acres

1. Outline the acreage dedicated to the subject well by colored pencil or hachure marks on the plat below.
2. If more than one lease is dedicated to the well, outline each and identify the ownership thereof (both as to working interest and royalty).
3. If more than one lease of different ownership is dedicated to the well, have the interests of all owners been consolidated by communitization, unitization, force-pooling, etc?

☐ Yes ☐ No If answer is "yes," type of consolidation _____

If answer is "no," list the owners and tract descriptions which have actually been consolidated. (Use reverse side of this form if necessary.) _____

No allowable will be assigned to the well until all interests have been consolidated (by communitization, unitization, forced-pooling, or otherwise) or until a non-standard unit, eliminating such interests, has been approved by the Commission.



CERTIFICATION

I hereby certify that the information contained herein is true and complete to the best of my knowledge and belief.

Name _____
Area Manager
 Position _____
Minerals Management Inc.
 Company _____
August 1, 1977
 Date _____

I hereby certify that the well location shown on this plat was plotted from field notes of actual surveys made by me or under my supervision, and that the same is true and correct to the best of my knowledge and belief.

Date Surveyed
July 30, 1977
 Registered Professional Engineer
 and/or Land Surveyor
Fred B. Kott Jr.
 Certificate No.
3950