

UNITED STATES  
DEPARTMENT OF THE INTERIOR  
BUREAU OF LAND MANAGEMENT

APPLICATION FOR PERMIT TO DRILL, DEEPEN, OR PLUG BACK

RECEIVED

1a. Type of Work DRILL	5. Lease Number NMSF078504 Unit Reporting Number 070 Farmington, NM	
1b. Type of Well GAS	6. If Indian, All. or Tribe	
2. Operator <b>BURLINGTON</b> RESOURCES Oil & Gas Company	7. Unit Agreement Name San Juan 32-9 Unit	
3. Address & Phone No. of Operator PO Box 4289, Farmington, NM 87499 (505) 326-9700	8. Farm or Lease Name San Juan 32-9 Unit 9. Well Number 284S	
4. Location of Well 775' FSL, 1120' FEL Latitude 36° 58.7407'N, Longitude 107° 49.7837'W	10. Field, Pool, Wildcat Basin Fruitland Coal 11. Sec., Twn, Rge, Mer. (NMPM) P Sec. 13, T-32-N, R-10-W API # 30-045- 31772	
14. Distance in Miles from Nearest Town 8 miles to Cedar Hill	12. County San Juan	13. State NM
15. Distance from Proposed Location to Nearest Property or Lease Line 775'		
16. Acres in Lease	17. Acres Assigned to Well 313.8 E/2	
18. Distance from Proposed Location to Nearest Well, Drlg, Compl, or Applied for on this Lease 2000'		
19. Proposed Depth 3776'	20. Rotary or Cable Tools Rotary	
21. Elevations (DF, FT, GR, Etc.) 6904' GR	22. Approx. Date Work will Start	
23. Proposed Casing and Cementing Program See Operations Plan attached		
24. Authorized by: <u><i>Peggy Case</i></u> Regulatory/Compliance Supervisor	Date	<u>6-19-03</u>

PERMIT NO. \_\_\_\_\_

APPROVAL DATE \_\_\_\_\_

APPROVED BY David J. Mankiewicz

TITLE \_\_\_\_\_

DATE SEP 26 2003

Archaeological Report to be submitted

Threatened and Endangered Species Report to be submitted

NOTE: This format is issued in lieu of U.S. BLM Form 3160-3

Title 18 U.S.C. Section 1001, makes it a crime for any person knowingly and willfully to make to any department or agency of the United States any false, fictitious or fraudulent statements or presentations as to any matter within its jurisdiction.

DRILLING OPERATIONS AUTHORIZED ARE  
SUBJECT TO COMPLIANCE WITH ATTACHED  
"GENERAL REQUIREMENTS".

NMOC

This action is subject to technical and  
natural review pursuant to 43 CFR 3165.3  
and appeal pursuant to 43 CFR 3165.4

District II  
PO Drawer DD, Artesia, NM 88211-0719

Instructions on back  
Submit to Appropriate District Office

District III  
1000 Rio Brazos Rd., Aztec, NM 87410

State Lease - 4 Copies  
Fee Lease - 3 Copies

District IV  
PO Box 2088, Santa Fe, NM 87504-2088

OIL CONSERVATION DIVISION  
PO Box 2088  
Santa Fe, NM 87504-2088

☐ AMENDED REPORT

WELL LOCATION AND ACREAGE DEDICATION PLAT

*API Number 30-045- <b>31772</b>		*Pool Code 71629	*Pool Name Basin Fruitland Coal
*Property Code 7473	*Property Name SAN JUAN 32-9 UNIT		*Well Number 284S
*OGRID No. 14538	*Operator Name BURLINGTON RESOURCES OIL & GAS COMPANY, LP		*Elevation 6904'

<sup>10</sup> Surface Location

U. or lot no.	Section	Township	Range	Lot Idn	Feet from the	North/South line	Feet from the	East/West line	County
P	13	32N	10W		775	SOUTH	1120	EAST	SAN JUAN

<sup>11</sup> Bottom Hole Location If Different From Surface

U. or lot no.	Section	Township	Range	Lot Idn	Feet from the	North/South line	Feet from the	East/West line	County
<sup>12</sup> Dedicated Acres E/313.8					<sup>13</sup> Joint or Infill		<sup>14</sup> Consolidation Code		<sup>15</sup> Order No.

NO ALLOWABLE WILL BE ASSIGNED  
TO THIS COMPLETION UNTIL ALL  
INTERESTS HAVE BEEN CONSOLIDATED  
OR A NON-STANDARD UNIT HAS BEEN  
APPROVED BY THE DIVISION

<sup>17</sup> OPERATOR CERTIFICATION

I hereby certify that the information  
contained herein is true and complete  
to the best of my knowledge and belief

Signature

Peggy Cole

Printed Name

Regulatory Supervisor

Title

Date

<sup>18</sup> SURVEYOR CERTIFICATION

I hereby certify that the well location  
shown on this plat was plotted from field  
notes of actual surveys made by me or under  
my supervision, and that the same is true  
and correct to the best of my belief.

Date of Survey: APRIL 7, 2003

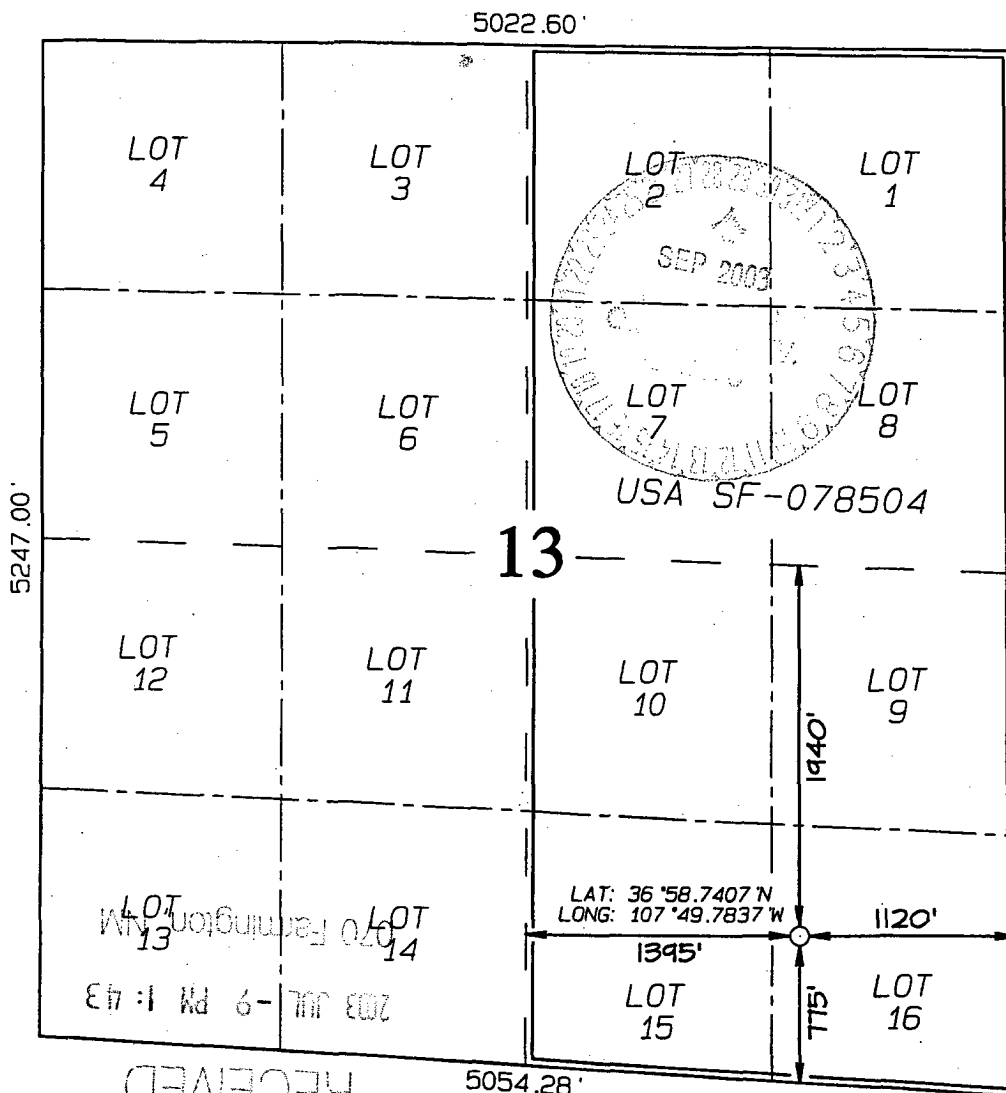
Signature and Seal of Professional Surveyor



**JASON C. EDWARDS**

Certificate Number

15269



# OPERATIONS PLAN

**Well Name:** San Juan 32-9 Unit #284S  
**Location:** 775' FSL, 1120' FEL Section 13, T-32-N, R-10-W  
Latitude 36° 58.7407'N, Longitude 107° 49.7837'W  
San Juan County, NM  
**Formation:** Basin Fruitland Coal  
**Elevation:** 6904' GR

Formation:	Top	Bottom	Contents
Surface	San Jose	1997'	
Ojo Alamo	1997'	2028'	aquifer
Kirtland	2028'	3121'	
Fruitland	3121'	3436'	
Intermediate TD	3386'		
Fruitland Coal	3436'	3676'	gas
B/Basal Coal	3676'	3678'	gas
Pictured Cliffs	3678'	3776'	
Total Depth	3776'		

**Logging Program:** none

**Mudlog:** with Softrock from 7" to TD

**Coring Program:** none

## **Mud Program:**

Interval	Type	Weight	Vis.	Fluid Loss
0- 120'	Spud	8.4-9.0	40-50	no control
120-3386'	Non-dispersed	8.4-9.0	30-60	no control
3386-3776'	Air/Mist			

## **Casing Program (as listed, the equivalent, or better):**

Hole Size	Depth Interval	Csg. Size	Wt.	Grade
12 1/4"	0' - 120'	9 5/8"	32.3#	H-40
8 3/4"	0' - 3386'	7"	20.0#	J-55
6 1/4"	3386' - 3776'	open hole		

## **Alternate Casing Program (as listed, the equivalent, or better):**

Hole Size	Depth Interval	Csg. Size	Wt.	Grade
12 1/4"	0' - 120'	9 5/8"	32.3#	H-40
8 3/4"	0' - 3386'	7"	20.0#	J-55
6 1/4"	3336' - 3776'	5 1/2"	15.5#	J-55

## **Tubing Program:**

0' - 3776'	2 3/8"	4.7#	J-55
------------	--------	------	------

**Float Equipment:** 9 5/8" surface casing - saw tooth guide shoe. Centralizers will be run in accordance with Onshore Order #2.

7" intermediate casing - guide shoe and self-fill float collar. Standard centralizers run every other joint above shoe. Two turbolizing type centralizers - one below and one into the base of the Ojo Alamo @ 2028'. Standard centralizers thereafter every fourth joint up to the base of the surface pipe.

**Wellhead Equipment:** 9 5/8" x 7" x 2 3/8" x 11" 2000 psi xmas tree assembly.

**Cementing:**

9 5/8" surface casing - cement with 32 sx Class A, B Portland Type I, II cement (38 cu.ft. of slurry, bring cement to surface through 3/4" line) or equivalent. WOC 24 hours for pre-set holes or 8 hours for conventionally set holes before pressure testing or drilling out from under surface casing.

7" intermediate casing - lead w/300 sacks Premium Lite with 3% calcium chloride, 5 pps LCM-1, and 1/4#/sack flocele, 0.4% FL-52, & 0.4% SMS. Tail with 90 sacks Type III cmt with 1% calcium chloride, 1/4#/sack flocele and 0.2% FL-52 (763 cu.ft., 50% excess to circulate to surface).

5 1/2" liner - will not be cemented if run.

Note: If open hole logs are run, cement volumes will be based on 25% excess over caliper volumes.

**BOP and tests:**

Surface to intermediate TD - 11" 2000 psi (minimum) double gate BOP stack (Reference Figure #1). Prior to drilling out surface casing, test rams to 600#/30 min.

Intermediate TD to Total Depth - 7 1/6" 2000 psi (minimum) double gate BOP stack (Reference Figure #2). Prior to drilling out intermediate casing, test blind rams and casing to 1500 psi for 30 minutes; all pipe rams and casing to 1500 psi for 30 minutes each.

From surface to TD - choke manifold (Reference Figure #3).

Pipe rams will be actuated at least once each day and blind rams actuated once each trip to test proper functioning. An upper kelly cock valve with handle and drill string safety valves to fit each drill string will be maintained and available on the rig floor.

**Additional information:**

- \* The Fruitland Coal formation will be completed.
- \* Anticipated pore pressure for the Fruitland is less than 500 psi.
- \* This gas is dedicated.
- \* The east half of section 13 is dedicated to the Fruitland Coal.

Date: 6/23/2003

Drilling Engineer: Jeffrey M. McCarthy