

UNITED STATES
DEPARTMENT OF THE INTERIOR
BUREAU OF LAND MANAGEMENT

Sundry Notices and Reports on Wells

2007 AUG -8 PM 2:14

1. Type of Well
GAS

RECEIVED
BLM
210 FARMINGTON NM

2. Name of Operator
CDX RIO, LLC

3. Address & Phone No. of Operator

2010 Afton Place, Farmington, New Mexico 87401 (505) 326-3003

4. Location of Well, Footage, Sec., T, R, M
1005'FNL, 1750'FWL, Sec.15, T-25-N, R-5-W, NMPM

5. Lease Number
Jicarilla Contract 148
6. If Indian, All. or
Tribe Name
Jicarilla Apache
7. Unit Agreement Name

8. Well Name & Number

Jicarilla 148 #13
9. API Well No.

30-039-06042

10. Field and Pool

11. West Lindrith Gallup/Dakota
County and State

Rio Arriba Co, NM

12. CHECK APPROPRIATE BOX TO INDICATE NATURE OF NOTICE, REPORT, OTHER DATA

Type of Submission	Type of Action
<input checked="" type="checkbox"/> Notice of Intent	<input checked="" type="checkbox"/> Abandonment
<input type="checkbox"/> Subsequent Report	<input type="checkbox"/> Recompletion
<input type="checkbox"/> Final Abandonment	<input type="checkbox"/> Plugging
	<input type="checkbox"/> Casing Repair
	<input type="checkbox"/> Altering Casing
	<input type="checkbox"/> Other

13. Describe Proposed or Completed Operations

It is intended to plug and abandon the subject well according to the attached procedures and wellbore diagrams.

RCVD AUG 21 '07
OIL CONS. DIV.
DIST. 3

14. I hereby certify that the foregoing is true and correct.

Signed Nancy Olthmanns Title Agent Date 8-7-07

(This space for Federal or State Office use)

APPROVED BY Original Signed: Stephen Mason Title _____ Date AUG 17 2007
CONDITION OF APPROVAL, if any:

PLUG AND ABANDONMENT PROCEDURE

August 6, 2007

Jicarilla 148 #13

Basin Dakota

1005' FNL, 1750' FWL, Section 15, T25N, R5W
Rio Arriba County, New Mexico, API 30-039-06042

Note: All cement volumes use 100% excess outside pipe and 50' excess inside. The stabilizing wellbore fluid will be 8.3 ppg, sufficient to balance all exposed formation pressures. All cement will be ASTM Type III, mixed at 14.8 ppg with a 1.32 cf/sx yield.

1. Project will require a Pit Permit (C103) from the NMOCD.
2. Install and test rig anchors. Prepare waste fluid holding pit. Comply with all NMOCD, BLM and CDX safety rules and regulations. Conduct safety meeting for all personnel on location. MOL and RU daylight pulling unit. NU relief line and blow well down; kill with water as necessary. ND wellhead and NU BOP and stripping head; test BOP.
3. PU on tubing and release pump. Reseat pump. Pressure test tubing to 1000 PSI. TOH and LD rods and pump. TOH with 6995' of 2.375" tubing and SN. Visually inspect tubing and, if necessary, LD tubing and PU a workstring. *6/82'*
4. **Plug #1 (Gallup perforations and top, 6516' – ~~6298'~~)**: TIH and set a 4.5" CR at 6516'. Load casing with water and circulate well clean. Pressure test casing to 800#. *If casing does not test, spot or tag subsequent plugs as appropriate.* Mix 12"sxs Type III cement and spot a balanced plug inside casing to cover the Gallup interval. PUH.
5. **Plug #2 (Mesaverde top, 4922' – 4822')**: Perforate 3 squeeze holes at 4922'. Attempt to establish rate into squeeze holes if the casing pressure tested. Set 4.5" cement retainer at 4872'. Establish rate into squeeze holes. Mix and pump 46 sxs Type III cement, squeeze 35 sxs outside the casing and leave 11 sxs inside casing. PUH.
6. **Plug #3 (Chacra top, 4134' – 4034')**: Mix 11 sxs Type III cement and spot a plug inside the casing to cover the Chacra top. PUH.
7. **Plug #4 (Pictured Cliffs, Fruitland, Kirtland and Ojo Alamo tops, 3270' – 2590')**: Mix 50 sxs Type III cement and spot a plug inside the casing to cover through the Ojo Alamo tops. PUH. *1342 1282 82*
9. **Plug #6 (Nacimiento top, ~~1300'~~ – ~~1200'~~)**: Perforate 3 squeeze holes at 1300'. Attempt to establish rate into squeeze holes if the casing pressure tested. Set 4.5" cement retainer at ~~1250'~~. Establish rate into squeeze holes. Mix and pump 46 sxs Type III cement, squeeze 35 sxs outside the casing and leave 11 sxs inside casing. TOH and LD tubing.
10. **Plug #7 (Surface, 556' – Surface)**: Perforate 3 HSC squeeze holes at 556'. Establish circulation to surface out the bradenhead valve; circulate the BH annulus clean. Mix approximately 155 sxs cement and pump down the 4.5" casing to circulate good cement to surface out the bradenhead valve. Shut in well and WOC.

11. ND BOP and cut off wellhead below surface casing flange. Install P&A marker with cement to comply with regulations. RD, MOL and cut off anchors. Restore location per BLM stipulations.

Jicarilla 148 #13

Current

Lindrith Gallup / Dakota West

1005' FNL, 1750' FWL, Section 15, T-25-N, R-5-W

Rio Arriba County, NM, API #30-039-06042

Today's Date: 8/6/07

Spud: 6/20/61

DK Completed: 7/8/61

GI Completed: 5/9/80

Elevation: 7008' GI

7018' KB

12.25" hole

8.625" 24#, K-55 Casing set @ 506'
Cement with 375 sxs, circulated

Well History:

May '80: Abandon Dakota interval and re-complete in Gallup Interval. Set CIBP at 7410' and spot 50' cement plug above to 7331'. Perforate the Gallup formation in 2 stages: 6566' – 6678' and 6726' – 6926'. Complete well and land tubing at 6923'. Install Pumping unit.

Sep '81: Pump changeout.

TOC @ 2575' , (Calc, 75%)

Nacimiento @ 1250'

Ojo Alamo @ 2640'

Kirtland @ 2840'

Fruitland @ 3090'

Pictured Cliffs @ 3220'

Chacra @ 4084'

2.375" tubing set at @ 6995'
(4.7# J-55, SN @ 6962' w/rods and pump)

DV Tool at 4191'
Cement with 350 sxs (490 cf)

Mesaverde @ 4872'

TOC @ 5535' (Calc 75%)

Gallup @ 6448'

Gallup Perforations:
6566' – 6678'
6726' – 6926'

**Set CIBP @ 7410' and spot
50' cement plug to 7331' (1980)**

Dakota Perforations:
7426' – 7468'

Dakota @ 7420'

4.5" 9.5#, J-55 Casing set @ 7537'
Cement with 450 sxs (608 cf)

7.875" hole

TD 7537'
PBTD 7331'

Jicarilla 148 #13

Proposed P&A

Lindrith Gallup / Dakota West

1005' FNL, 1750' FWL, Section 15, T-25-N, R-5-W

Rio Arriba County, NM, API #30-039-06042

Today's Date: 8/607

Spud: 6/20/61

DK Completed: 7/8/61

GI Completed: 5/9/80

Elevation: 7008' GI

7018' KB

12.25" hole

Nacimiento @ 1250'

Ojo Alamo @ 2640'

Kirtland @ 2840'

Fruitland @ 3090'

Pictured Cliffs @ 3220'

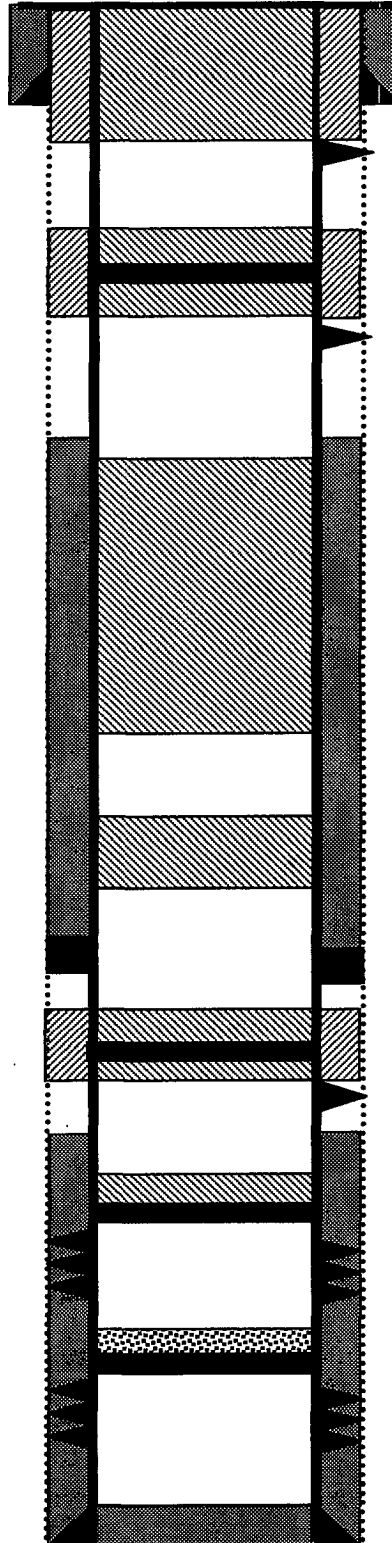
Chacra @ 4084'

Mesaverde @ 4872'

Gallup @ 6448'

Dakota @ 7420'

7.875" hole



TD 7537'
PBTD 7331'

Plug #6: 556' - 0'

Type III cement, 155 sxs

8.625" 24#, K-55 Casing set @ 506'

Cement with 375 sxs, circulated

Perforate @ 556'

Plug #5: 1300' - 1200'

Type III cement, 46 sxs:

35 outside and 11 inside

Cmt Ret @ 1250'

Perforate @ 1300'

TOC @ 2575' , (Calc, 75%)

Plug #4: 3290' - 2590'

Type III cement, 50 sxs

Plug #3: 4134' - 4034'

Type III cement, 11 sxs

DV Tool at 4191'

Cement with 350 sxs (490 cf)

Cmt Ret @ 4872'

Plug #2: 4922' - 4822'

Type III cement, 46 sxs:

35 outside and 11 inside

Perforate @ 4922'

TOC @ 5535' (Calc 75%)

Set CR @ 6516'

Gallup Perforations:

6566' - 6678'

6726' - 6926'

Plug #1: 6516' - 6398'

Type III cement, 12 sxs

Set CIBP @ 7410' and spot
50' cement plug to 7331' (1980)

Dakota Perforations:

7426' - 7468'

4.5" 9.5#, J-55 Casing set @ 7537'

Cement with 450 sxs (608 cf)

The Jicarilla Apache Nation requires 45 days to evaluate this well beginning from August 9, 2007 in order to determine if they would like to assume ownership of the well. If the Jicarilla Apache Nation has not contacted your office before the end of the 45 days you may proceed with plugging operations.

**UNITED STATES DEPARTMENT OF THE INTERIOR
BUREAU OF LAND MANAGEMENT
FARMINGTON DISTRICT OFFICE
1235 LA PLATA HIGHWAY
FARMINGTON, NEW MEXICO 87401**

Attachment to notice of
Intention to Abandon:

Re: Permanent Abandonment
Well: 13 Jicarilla 148

CONDITIONS OF APPROVAL

1. Plugging operations authorized are subject to the attached "General Requirements for Permanent Abandonment of Wells on Federal and Indian Lease."
2. Farmington Office is to be notified at least 24 hours before the plugging operations commence (505) 599-8907.
3. The following modifications to your plugging program are to be made:
 - a) Bring the top of the Gallup plug to 6182'
 - b) Place the Nacimiento plug to 1382' – 1282' inside and outside the 4 ½" casing.

You are also required to place cement excesses per 4.2 and 4.4 of the attached General Requirements.

Office Hours: 7:45 a.m. to 4:30 p.m.