

RCVD AUG 27 '07

OIL CONS. DIV.

DIST. 3

Form C-101

May 27, 2004

District I
1625 N. French Dr., Hobbs, NM 88240
District II
1301 W. Grand Avenue, Artesia, NM 88210
District III
1000 Rio Brazos Road, Aztec, NM 87410
District IV
1220 S. St. Francis Dr., Santa Fe, NM 87505

State of New Mexico
Energy Minerals and Natural Resources

Oil Conservation Division
1220 South St. Francis Dr.
Santa Fe, NM 87505

Submit to appropriate District Office

☐ AMENDED REPORT

APPLICATION FOR PERMIT TO DRILL, RE-ENTER, DEEPEN, PLUGBACK, OR ADD A ZONE

¹ Operator Name and Address Holcomb Oil and Gas Inc. P.O. Box 2058 Farmington, NM 87499		² OGRID Number 010605
		³ API Number 30-45-34409
⁴ Property Code 36685	⁵ Property Name Jacque	⁶ Well No. 2
⁹ Proposed Pool 1 Basin Fruitland Coal		¹⁰ Proposed Pool 2

⁷ Surface Location

UL or lot no H	Section 27	Township 29-N	Range 11-W	Lot Idn	Feet from the 1585	North/South line North	Feet from the 1045	East/West line East	County San Juan
-------------------	---------------	------------------	---------------	---------	-----------------------	---------------------------	-----------------------	------------------------	--------------------

⁸ Proposed Bottom Hole Location If Different From Surface

UL or lot no	Section	Township	Range	Lot Idn	Feet from the	North/South line	Feet from the	East/West line	County
--------------	---------	----------	-------	---------	---------------	------------------	---------------	----------------	--------

Additional Well Information

¹¹ Work Type Code N	¹² Well Type Code G	¹³ Cable/Rotary R	¹⁴ Lease Type Code P	¹⁵ Ground Level Elevation 5513
¹⁶ Multiple No	¹⁷ Proposed Depth 1850'	¹⁸ Formation Fruitland Coal	¹⁹ Contractor Scorpion Drilling	²⁰ Spud Date
Depth to Groundwater Less than 100' 20'		Distance from nearest fresh water well Greater than 1000' 200'		
Distance from nearest surface water Greater than 500' 200'				
Pit: Liner: Synthetic <input type="checkbox"/> mls thick Clay <input type="checkbox"/> Pit Volume _____ bbls Drilling Method _____ Closed-Loop System <input checked="" type="checkbox"/> Fresh Water <input checked="" type="checkbox"/> Brine <input type="checkbox"/> Diesel/Oil-based <input type="checkbox"/> Gas/Air <input type="checkbox"/>				

²¹ Proposed Casing and Cement Program

Hole Size	Casing Size	Casing weight/foot	Setting Depth	Sacks of Cement	Estimated TOC
8 3/4"	7"	23#/ft.	150'	85	Surface
6 1/4"	4 1/2"	10.5#/ft.	1850'	318	Surface

²² Describe the proposed program. If this application is to DEEPEN or PLUG BACK, give the data on the present productive zone and proposed new productive zone. Describe the blowout prevention program, if any. Use additional sheets if necessary.

Holcomb Oil and Gas, Inc. proposes to drill a vertical well at the above listed location and to test the Fruitland Coal Formation. An 8 3/4" surface hole will be drilled to approx. 150' with spud mud. 7", 23# Casing will be set and cemented to surface with 85sx of Type V. w/.25#/sack Cello Flake plus 2% CaCL (350 excess). A 2000# rated double ran or annular BOP will be installed and pressure tested to 600psi. A 6 1/4" hole will be drilled using a freshwater-polymer mud system to approx. 1850'. 4 1/2", 10.5# casing will be set and cemented to surface with 243sx(500.6cuft.) of Type V. cement with 2% SMS+.25lbs./sack Cello Flake 3lb./sack Gilsonite mixed to 12.5ppg followed by 75sx(90cubic feet) standard Type V. Cement w/ 2% CaCL and .25#/sack Cello Flake and 3lbs/sack Gilsonite mixed to 15.5ppg. Casehole Spectral Density Log, Dual Spaced Neutron will be run from TD to the surface casing shoe. Deviation surveys will be run every 500'. The e/2 of sec.27(320 acres) is dedicated to this well. Formation Tops:0A-1376', Fruitland-1380'

²³ I hereby certify that the information given above is true and complete to the best of my knowledge and belief. I further certify that the drilling pit will be constructed according to NMOC guidelines ☐, a general permit ☐, or an (attached) alternative OCH-approved plan ☐.

Signature

W. J. Holcomb

Printed name

W. J. Holcomb

Title: President

E-mail Address w.j.holcomb@qwest.net

Date: 8/27/07

Phone: 505-326-0550

OIL CONSERVATION DIVISION

Approved by:

[Signature]

Title

Approval Date

Expiration Date

Conditions of Approval Attached

☒ Closed loop system

NOTIFY AZTEC OCD 24 HRS.
PRIOR TO CASING & CEMENT

- No below grade pits or tanks

DISTRICT I
1625 N French Dr., Hobbs, NM 88240

DISTRICT II
1301 W Grand Ave., Artesia, NM 88210

DISTRICT III
1000 Rio Brazos Rd., Aztec, NM 87410

DISTRICT IV
1220 South St. Francis Dr., Santa Fe, NM 87505

State of New Mexico
Energy, Minerals & Natural Resources Department
OIL CONSERVATION DIVISION
1220 South St. Francis Dr.
Santa Fe, NM 87505

Form C-102
Revised October 12, 2005

Submit to Appropriate District Office
State Lease - 4 Copies
Fee Lease - 3 Copies

☐ AMENDED REPORT

WELL LOCATION AND ACREAGE DEDICATION PLAT

¹ API Number 30-45-34409	² Pool Code 71629	³ Pool Name Basin Fruitland Coal
⁴ Property Code 36685	⁵ Property Name JACQUE	⁶ Well Number 2
⁷ OGRID No 10605	⁸ Operator Name HOLCOMB OIL AND GAS INC.	⁹ Elevation 5513

¹⁰ Surface Location

UL or lot no	Section	Township	Range	Lot Idn	Feet from the	North/South line	Feet from the	East/West line	County
H	27	29-N	11-W		1585	NORTH	1045	EAST	SAN JUAN

¹¹ Bottom Hole Location If Different From Surface

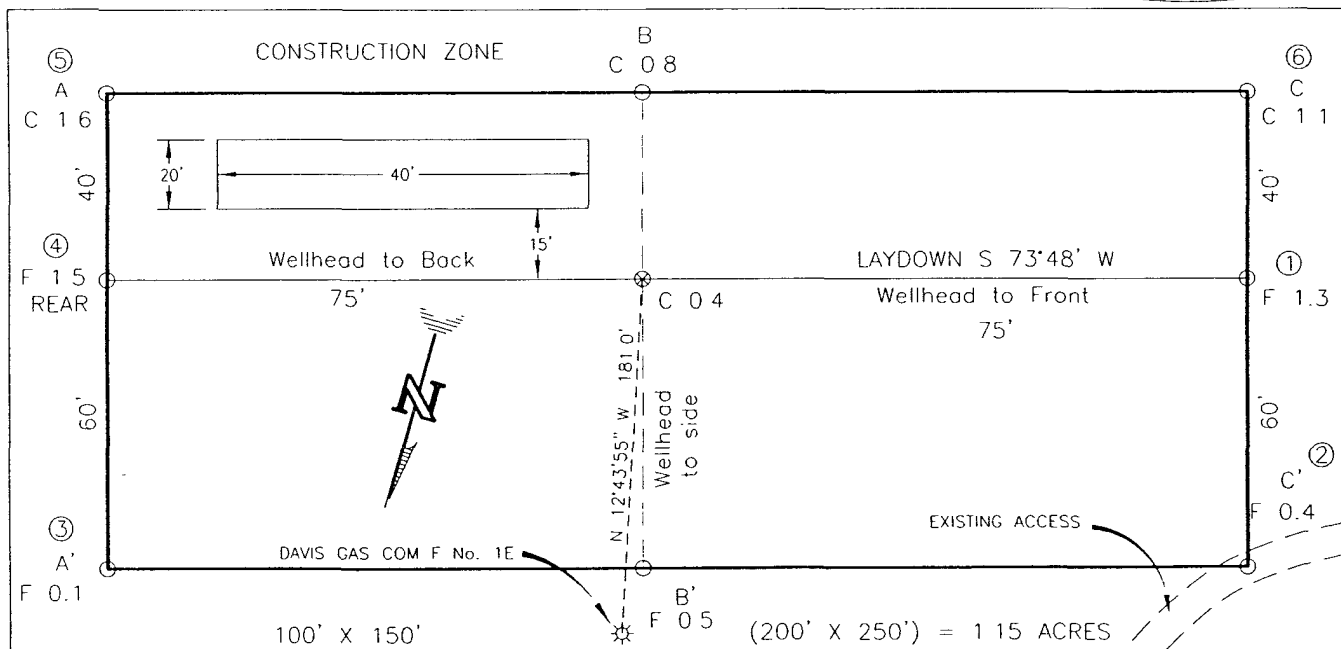
UL or lot no	Section	Township	Range	Lot Idn	Feet from the	North/South line	Feet from the	East/West line	County
¹² Dedicated Acres 320 E/2			¹³ Joint or Infill		¹⁴ Consolidation Code		¹⁵ Order No		

NO ALLOWABLE WILL BE ASSIGNED TO THIS COMPLETION UNTIL ALL INTERESTS HAVE BEEN CONSOLIDATED
OR A NON-STANDARD UNIT HAS BEEN APPROVED BY THE DIVISION

16	QTR. CORNER 3 1/4" BC 1999 B.L.M.	S 87-59-17 W 2606.05' (C)	CALC'D. CORNER BY DBL. PROP.	17
LAT: 36 69974' N (NAD 83) LONG: 107 97361' W (NAD 83)		1585'	1045'	OPERATOR CERTIFICATION I hereby certify that the information contained herein is true and complete to the best of my knowledge and belief, and that this organization either owns a working interest or unleased mineral interest in the land including the proposed bottom hole location or has a right to drill this well at this location pursuant to a contract with an owner of such a mineral or working interest, or to a voluntary pooling agreement or a compulsory pooling order heretofore entered by the division. Signature: <u>W.T. Holcomb</u> Date: <u>8-27-07</u> Printed Name: <u>W.T. Holcomb</u>
27		S 00-24-12 E 5241.02' (C)	SEC. CORNER 3 1/4" BC. 1999 B.L.M.	

HOLCOMB OIL & GAS INC.
 JACQUE No. 2, 1585 FNL 1045 FEL
 SECTION 27, T29N, R11W, N.M.P.M., SAN JUAN COUNTY, N.M.
 GROUND ELEVATION: 5513', DATE: AUGUST 21, 2007

NAD 83
 LAT. = 36.69974° N
 LONG. = 107.97361° W



RESERVE PIT DIKE. TO BE 8' ABOVE DEEP SIDE (OVERFLOW - 3' WIDE AND 1' ABOVE SHALLOW SIDE).
 BLOW PIT OVERFLOW PIPE HALFWAY BETWEEN TOP AND BOTTOM AND TO EXTEND OVER PLASTIC LINER AND INTO BLOW PIT

NOTE: DAGGETT ENTERPRISES, INC. IS NOT LIABLE FOR UNDERGROUND UTILITIES OR PIPELINES. NEW MEXICO ONE CALL TO BE NOTIFIED 48 HOURS PRIOR TO EXCAVATION OR CONSTRUCTION

ELEV A-A'	C/L			
5520				
5510				
5500				
5490				

ELEV B-B'	C/L			
5520				
5510				
5500				
5490				

ELEV C-C'	C/L			
5520				
5510				
5500				
5490				

NOTE: CONTRACTOR SHOULD CALL ONE-CALL FOR LOCATION OF ANY MARKED OR UNMARKED BURIED PIPELINES OR CABLES ON WELL PAD AND OR ACCESS ROAD AT LEAST TWO (2) WORKING DAYS PRIOR TO CONSTRUCTION.

REVISION	DATE	REVISED BY
<p>Daggett Enterprises, Inc. Surveying and Oil Field Services P O Box 510 Farmington, NM 87499 Phone (505) 326-1772 • Fax (505) 326-6019 NEW MEXICO L.S. No. 8894 CADFILE HOG008_CFB</p>		
DRAWN BY	G.V.	DATE 08/22/07
ROW#	HOG008	

