

2006 AUG 17 UNITED STATES
DEPARTMENT OF THE INTERIOR
BUREAU OF LAND MANAGEMENT INDIAN MINERALS OFFICE

APPLICATION FOR PERMIT TO DRILL OR REENTER

1a. Type of work: <input checked="" type="checkbox"/> DRILL <input type="checkbox"/> REENTER		5. Lease Serial No. SF-078897
1b. Type of Well: <input type="checkbox"/> Oil Well <input checked="" type="checkbox"/> Gas Well <input type="checkbox"/> Other <input checked="" type="checkbox"/> Single Zone <input type="checkbox"/> Multiple Zone		6. If Indian, Allottee or Tribe Name
2. Name of Operator Dugan Production Corp.		7. If Unit or CA Agreement, Name and No.
3a. Address 709 East Murray Drive, Farmington, NM 87401	3b. Phone No. (include area code) 505-325-1821	8. Lease Name and Well No. Western Federal Com #90
3c. Location of Well (Report location clearly and in accordance with any State requirements.) At surface 1155' FNL & 1255' FEL, Lat. 36.50672 N. At proposed prod. zone Same as above Long. 108.04019 W.		9. API Well No. 30-045-33903
4. Distance in miles and direction from nearest town or post office* Approx. 25-miles SE of Farmington, New Mexico 87401		10. Field and Pool, or Exploratory Basin Fruitland Coal
15. Distance from proposed* location to nearest property or lease line, ft. (Also to nearest drig. unit line, if any) 165 Feet	16. No. of acres in lease 398.75 Acres	11. Sec., T. R. M. or Blk. and Survey or Area A Sec. 7, T26N, R11W NMMP
18. Distance from proposed location* to nearest well, drilling, completed, applied for, on this lease, ft. Approx. 650'	19. Proposed Depth 1645 Feet	12. County or Parish San Juan
21. Elevations (Show whether DF, KDB, RT, GL, etc.) GL-6120'	22. Approximate date work will start* ASAP	13. State NM
23. Estimated duration 6-Days		17. Spacing Unit dedicated to this well E/2-320.0 Acres
24. Attachments		

The following, completed in accordance with the requirements of Onshore Oil and Gas Order No.1, shall be attached to this form:

1. Well plat certified by a registered surveyor.
2. A Drilling Plan.
3. A Surface Use Plan (if the location is on National Forest System Lands, the SUPO shall be filed with the appropriate Forest Service Office).

4. Bond to cover the operations unless covered by an existing bond on file (see PERMITS Item 20 above).
5. Operator certification
6. Such other site specific information and/or plans as may be required by the authorized officer.

25. Signature <i>Kurt Fagrelis</i>	Name (Printed/Typed) Kurt Fagrelis	Date July 2, 2006
Title Geology		
Approved by (Signature) <i>[Signature]</i>	Name (Printed/Typed) [Name]	Date 8/29/07
Title AEM	Office ERO	

Application approval does not warrant or certify that the applicant holds legal or equitable title to those rights in the subject lease which would entitle the applicant to conduct operations thereon.
Conditions of approval, if any, are attached.

Title 18 U.S.C. Section 1001 and Title 43 U.S.C. Section 1212, make it a crime for any person knowingly and willfully to make to any department or agency of the United States any false, fictitious or fraudulent statements or representations as to any matter within its jurisdiction.

*(Instructions on page 2)

NOTIFY AZTEC OCD 24 HRS.
PRIOR TO CASING & CEMENT.

A water based gel-mud will be used to drill surface and production casing hole. The Fruitland Coal will be completed from approximately 1415' - 1490'. The interval will be fracture stimulated.

Note; Standard 2,000 psi BOP will be used to drill production hole.

District I
PO Box 1980, Hobbs, NM 88241-1980

District II
PO Drawer DD, Artesia, NM 88211-0719

District III
1000 Rio Brazos Rd., Aztec, NM 87410

District IV
PO Box 2088, Santa Fe, NM 87504-2088

State of New Mexico
Energy, Minerals & Natural Resources Department

OIL CONSERVATION DIVISION
PO Box 2088
Santa Fe, NM 87504-2088

Form C-102
Revised February 21, 1994
Instructions on back
Submit to Appropriate District Office
State Lease - 4 Copies
Fee Lease - 3 Copies

RCVD AUG 30 '07

☐ AMENDED REPORT
OIL CONS. DIV.
DIST. 3

WELL LOCATION AND ACREAGE DEDICATION PLAT

*API Number 30045-33903		*Pool Code 71629	*Pool Name BASIN FRUITLAND COAL
*Property Code 36695	*Property Name WESTERN FEDERAL COM		*Well Number 90
*OGRID No. 006515	*Operator Name DUGAN PRODUCTION CORPORATION		*Elevation 6120'

¹⁰ Surface Location


UL or lot no A	Section 7	Township 26N	Range 11W	Lot Idn	Feet from the 1155	North/South line NORTH	Feet from the 1255	East/West line EAST	County SAN JUAN
-------------------	--------------	-----------------	--------------	---------	-----------------------	---------------------------	-----------------------	------------------------	--------------------

¹¹ Bottom Hole Location If Different From Surface

UL or lot no	Section	Township	Range	Lot Idn	Feet from the	North/South line	Feet from the	East/West line	County
--------------	---------	----------	-------	---------	---------------	------------------	---------------	----------------	--------

¹² Dedicated Acres 320.0 Acres - (E/2)	¹³ Joint or Infill	¹⁴ Consolidation Code	¹⁵ Order No
--	-------------------------------	----------------------------------	------------------------

NO ALLOWABLE WILL BE ASSIGNED TO THIS COMPLETION UNTIL ALL INTERESTS HAVE BEEN CONSOLIDATED
OR A NON-STANDARD UNIT HAS BEEN APPROVED BY THE DIVISION

¹⁶ 1317.36' LOT 1	1342.44'	1342.77'	1342.77'	¹⁷ OPERATOR CERTIFICATION I hereby certify that the information contained herein is true and complete to the best of my knowledge and belief <i>Kurt Fagrelis</i> Signature Kurt Fagrelis Printed Name Geology Title July 2, 2006 Date ¹⁸ SURVEYOR CERTIFICATION I hereby certify that the well location shown on this plat was plotted from field notes of actual surveys made by me or under my supervision, and that the same is true and correct to the best of my belief Date of Survey: JUNE 23, 2006 Signature and Seal of Professional Surveyor  <i>JASON C. EDWARDS</i> Certificate Number 15269
LOT 2		LAT: 36.50672°N LONG: 108.04019°W DATUM: NAD1983		
LOT 3		MERRION SF-078897-A DUGAN SF-078897	DUGAN SF-078897	
LOT 4		DUGAN SF-078897	DUGAN SF-078897-A	
1302.84'	1321.98'	1321.98'	1321.98'	

Submit 3 Copies To Appropriate District Office
District I
1625 N French Dr, Hobbs, NM 88240
District II
1301 W Grand Ave, Artesia, NM 88210
District III
1000 Rio Brazos Rd, Aztec, NM 87410
District IV
1220 S St. Francis Dr, Santa Fe, NM 87505

State of New Mexico
Energy, Minerals and Natural Resources

Form C-103
May 27, 2004

OIL CONSERVATION DIVISION
1220 South St. Francis Dr.
Santa Fe, NM 87505

WELL API NO. 30-045- 33903
5. Indicate Type of Lease Federal XX STATE <input type="checkbox"/> FEE <input type="checkbox"/>
6. State Oil & Gas Lease No. Federal SF-078897
7. Lease Name or Unit Agreement Name Western Federal Com
8. Well Number #90
9. OGRID Number 006515
10. Pool name or Wildcat Basin Fruitland Coal

SUNDRY NOTICES AND REPORTS ON WELLS
(DO NOT USE THIS FORM FOR PROPOSALS TO DRILL OR TO DEEPEN OR PLUG BACK TO A DIFFERENT RESERVOIR. USE "APPLICATION FOR PERMIT" (FORM C-101) FOR SUCH PROPOSALS.)

1. Type of Well: Oil Well ☐ Gas Well ☒ Other

2. Name of Operator **Dugan Production Corp.**

3. Address of Operator **709 East Murray Drive, Farmington, NM**

4. Well Location
Unit Letter **A** : **1155** feet from the **north** line and **1255** feet from the **east** line
Section **7** Township **26N** Range **11W** NMPM County **San Juan**

11. Elevation (Show whether DR, RKB, RT, GR, etc.)
GL-6120'

Pit or Below-grade Tank Application ☒ or Closure ☐

Pit type **Drilling** Depth to Groundwater **+100'** Distance from nearest fresh water well **+1000'** Distance from nearest surface water **+200'**

Pit Liner Thickness: **12** mil Below-Grade Tank: Volume _____ bbls; Construction Material **Synthetic**

12. Check Appropriate Box to Indicate Nature of Notice, Report or Other Data

NOTICE OF INTENTION TO:

PERFORM REMEDIAL WORK ☐ PLUG AND ABANDON ☐
TEMPORARILY ABANDON ☐ CHANGE PLANS ☐
PULL OR ALTER CASING ☐ MULTIPLE COMPL ☐

SUBSEQUENT REPORT OF:

REMEDIAL WORK ☐ ALTERING CASING ☐
COMMENCE DRILLING OPNS. ☐ P AND A ☐
CASING/CEMENT JOB ☐

OTHER: **Reserve pit for drilling (lined)** ☒

OTHER: ☐

13. Describe proposed or completed operations. (Clearly state all pertinent details, and give pertinent dates, including estimated date of starting any proposed work). SEE RULE 1103. For Multiple Completions: Attach wellbore diagram of proposed completion or recompletion.

A water based gel-mud will be used to drill surface and production casing hole. Standard 2,000 psi BOP will be used to drill production hole. The Fruitland Coal will be completed from approximately 1415' - 1490'. The interval will be fracture stimulated.

RCVD AUG 30 '07
OIL CONS. DIV.

DIST. 3

I hereby certify that the information above is true and complete to the best of my knowledge and belief. I further certify that any pit or below-grade tank has been/will be constructed or closed according to NMOC guidelines ☒, a general permit ☐ or an (attached) alternative OCD-approved plan ☐.

SIGNATURE Kurt Fagrelius TITLE Geology DATE July 2, 2006

Type or print name Kurt Fagrelius E-mail address: kfagrelius@duganproduction.com Telephone No. 505-325-1821

For State Use Only

APPROVED BY: [Signature] Deputy Oil & Gas Inspector
Conditions of Approval (if any): _____ TITLE District #3 DATE SEP 04 2007

EXHIBIT B
OPERATIONS PLAN
Western Federal Com #90

APPROXIMATE FORMATION TOPS:

Ojo Alamo	390'		
Kirtland	525'	Pictured Cliffs	1495'
Fruitland	1100'	Total Depth	1645'

Catch samples every 10 feet from 1350 feet to 1645 feet.

LOGGING PROGRAM:

Run cased-hole GR-CCL-CNL from total depth to surface.

CASING PROGRAM:

Hole Size	Casing Size	Wt./ft.	Setting Depth	Grade and Condition
12-1/4"	8-5/8"	24#	120'	J-55
7"	5-1/2"	14#	1645'	J-55

Plan to drill a 12-1/4" hole and set 120' of 8-5/8" OD, 24#, J-55 surface casing. Then plan to drill a 7" hole to total depth with gel-water mud program to test the Fruitland Coal. 5-1/2", 14#, J-55 production casing will be run and cemented. Cased hole GR-CCL-CNL log will be run. Productive zone will be perforated and fractured. After frac, the well will be cleaned out and production equipment will be installed.

CEMENTING PROGRAM:

Surface: Cement to surface with 70 cf Class B + 2% CaCl₂.
Circulate to surface.

Production Stage-Cement with 135 cf 2%Lodense with
1/4# celloflake/sx followed by 115 cf Class "B" with
1/4# celloflake/sx.
Total cement slurry for production stage is 250 cf.
Circulate cement to surface.

An adequate spacer will be pumped ahead of the cement slurry to help prevent mud contamination of the cement. An adequate number of casing centralizers will be run through usable water zones to ensure that casing is centralized through these zones. The adequate number of centralizers will be determined based on API standards. Centralizers to impart a swirling action around the casing will be used just below and into the base of the lowest usable water zone. These devices will assist mud

displacement, increase cement bonding potential and create an effective hydraulic seal. A chronological log will be kept which records the pump rate, pump pressure, slurry density, and slurry volume for the cement job. The log will be sent to the BLM after completion of the job.

WELLHEAD EQUIPMENT:

Huber 8-5/8"x5-1/2" casing head, 1000# WP, tested to 2000#.
Huber 5-1/2"x2-7/8" tubing head, 1000# WP, tested to 2000#.

BOP and Related Equipment will include for a 2000 psi system:

(Exhibit D)

Annular preventer, double ram, or 2 rams with one being blind and one being a pipe ram.

Kill line (2" minimum)

1 kill line valve (2" minimum)

1 choke line valve

2 chokes

Upper kelly cock valve with handle available

Safety valve and subs to fit all drill string connections in use.

Pressure gauge on choke manifold.

2" minimum choke line.

Fill-up line.

Contacts:

Dugan Prod.Corp. Office & Radio Dispatch: 325-1821

Mark Brown	327-3632 (H)
	320-8247 (M)

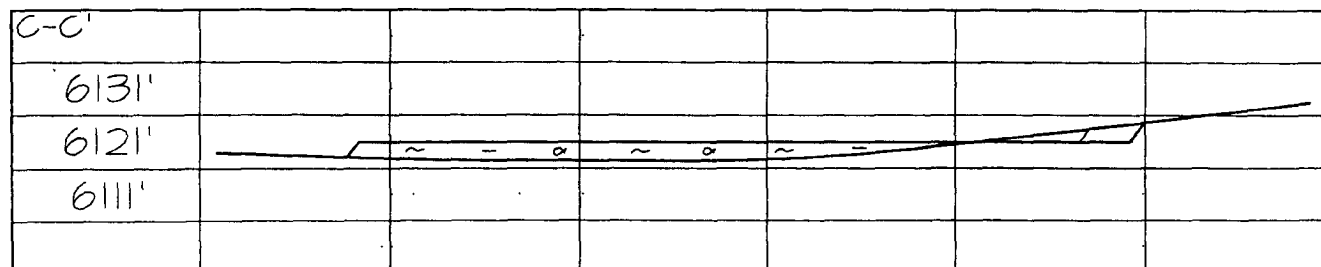
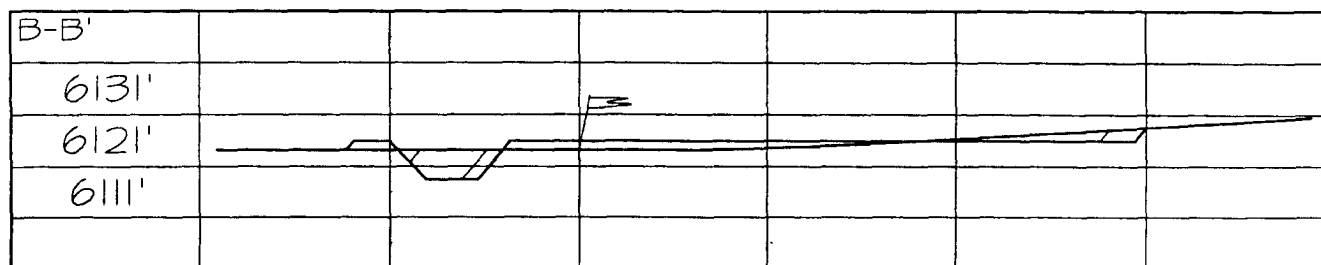
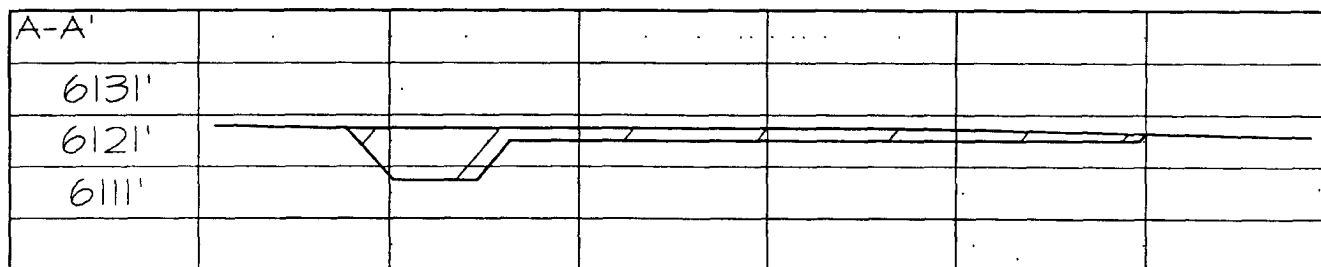
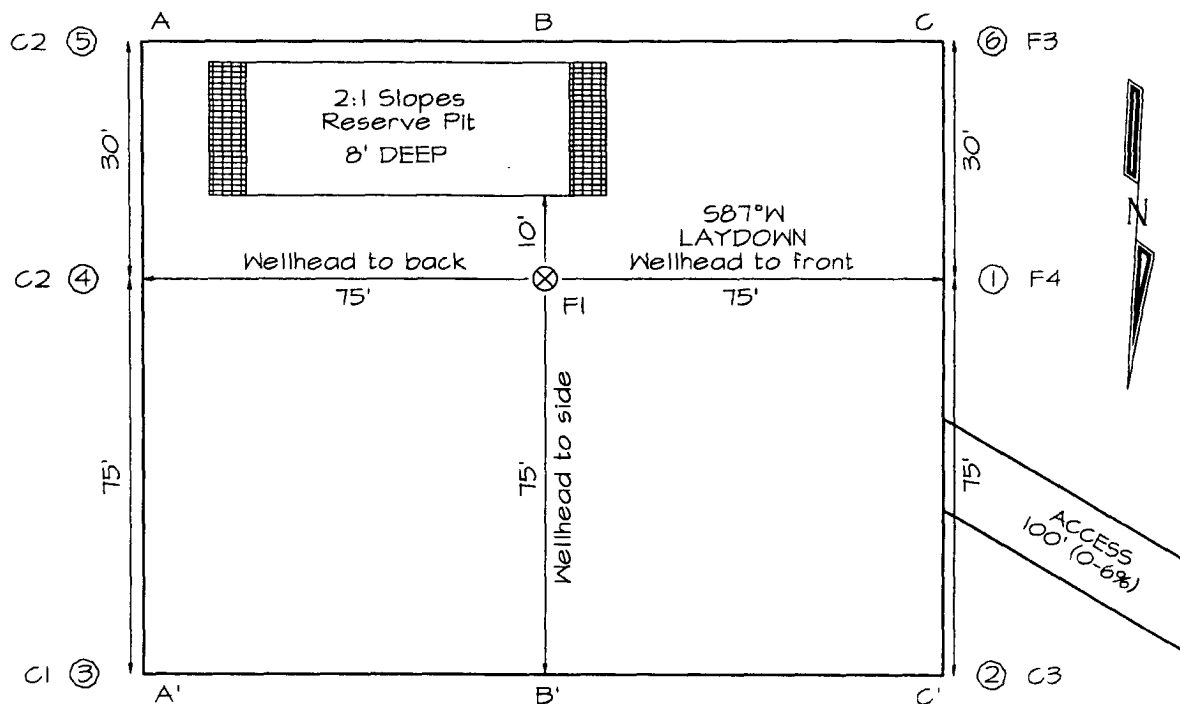
Kurt Fagrelus	325-4327 (H)
	320-8248 (M)

John Alexander	325-6927 (H)
	320-1935 (M)

PLAT 3.

DATUM: NAD1983

SURFACE OWNER
Navajo Tribal Trust

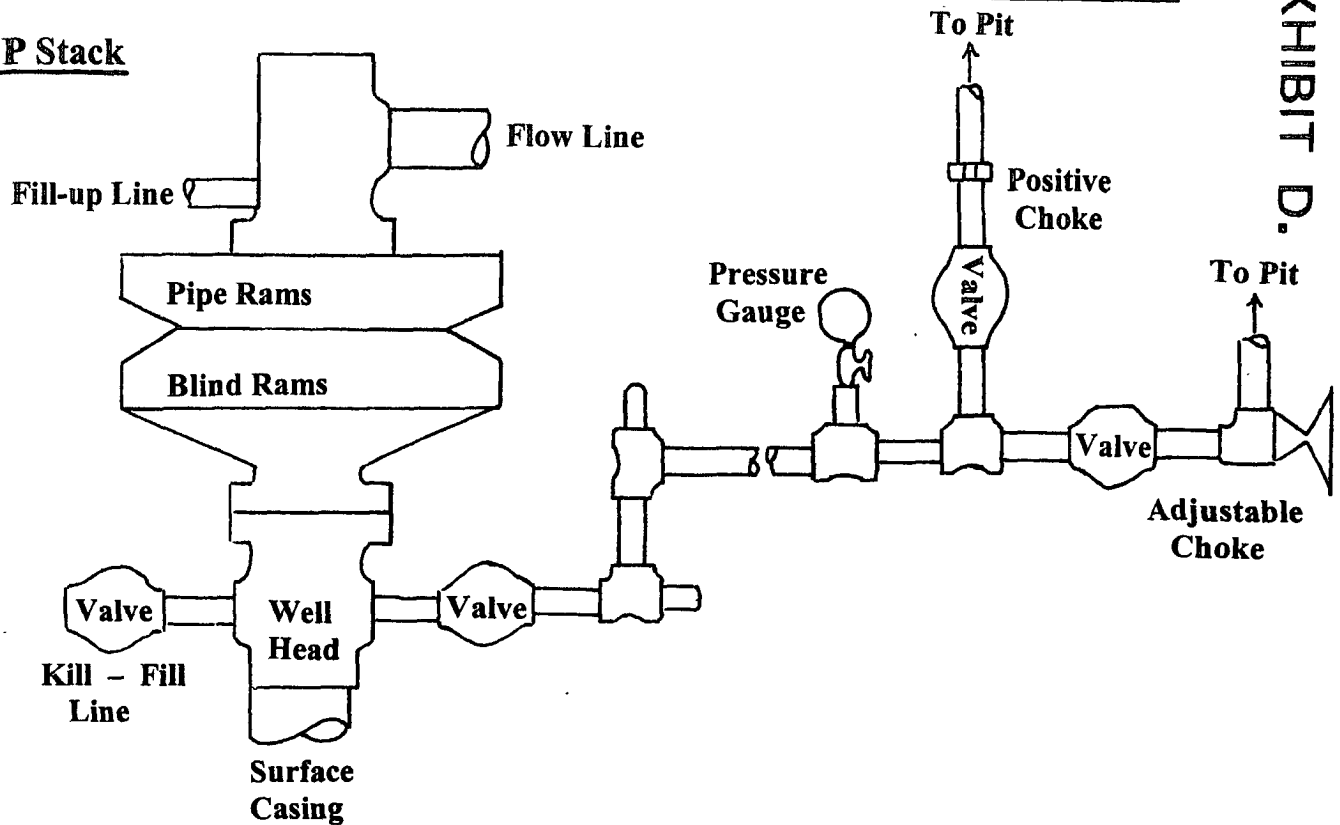


Note: Contractor should call One-Call for location of any marked or unmarked buried pipelines or cables on well pad and/or access road at least two (2) working days prior to construction

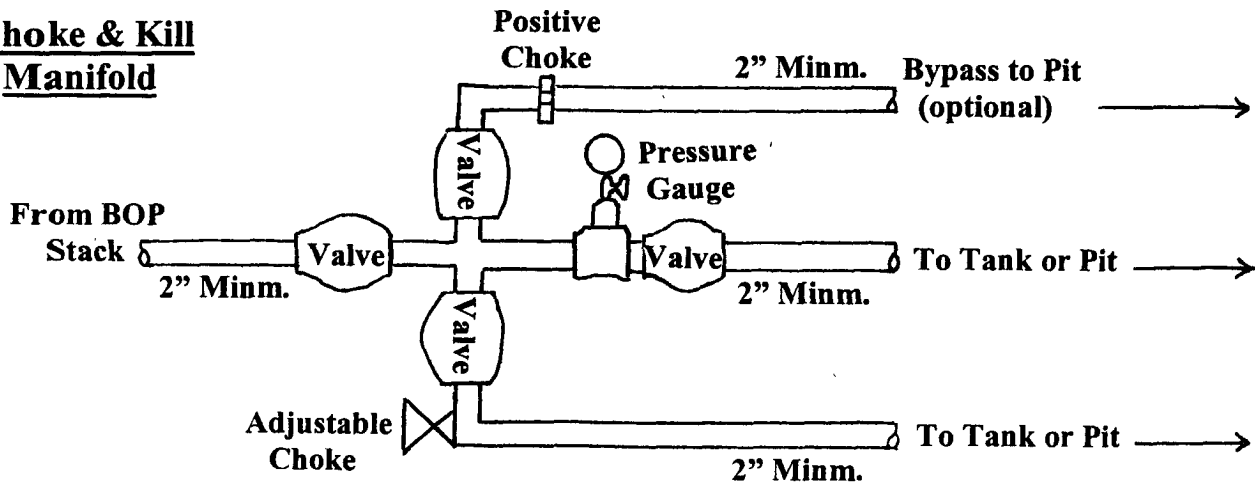
Well Control Equipment Schematic for 2,000 psi BOP

EXHIBIT D.

BOP Stack



Choke & Kill Manifold



Working Pressure for all equipment is 2,000 psi or greater

DUGAN PRODUCTION CORP.
WESTERN FEDERAL COM #90