

District I
1625 N. French Dr., Hobbs, NM 88240
District II
811 South First, Artesia, NM 88210
District III
1000 Rio Brazos Road, Aztec, NM 87410
District IV
1220 S. St. Francis Dr., Santa Fe, NM 87505

State of New Mexico
Energy Minerals and Natural Resources

Oil Conservation Division
1220 South St. Francis Dr.
Santa Fe, NM 87505

Form C-101
Revised March 17, 1999

Submit to appropriate District Office
State Lease - 6 Copies
Fee Lease - 5 Copies

☐ AMENDED REPORT

APPLICATION FOR PERMIT TO DRILL, RE-ENTER, DEEPEN, PLUGBACK, OR ADD A ZONE

¹ Operator Name and Address XTO Energy, Inc. 2700 Farmington Av., Bld. K, Suite 1, Farmington, NM 87401		² OGRID Number 167067
³ Property Code 23353	⁴ Property Name State J Com	⁵ Well No. 1 E

UL or lot no. K	Section 16	Township 26n	Range 11w	Lot Idn	Feet from the 1955	North/South line South	Feet from the 1970	East/West line West	County SJ
---------------------------	----------------------	------------------------	---------------------	---------	------------------------------	----------------------------------	------------------------------	-------------------------------	---------------------

⁸ Proposed Bottom Hole Location If Different From Surface

UL or lot no.	Section	Township	Range	Lot Idn	Feet from the	North/South line	Feet from the	East/West line	County
---------------	---------	----------	-------	---------	---------------	------------------	---------------	----------------	--------

⁹ Proposed Pool 1 Basin Dakota	¹⁰ Proposed Pool 2 Gallegos Gallup Associated
---	--

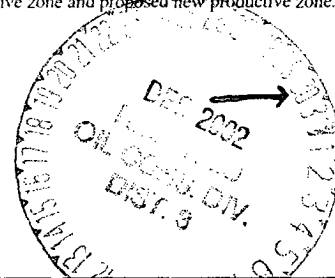
¹¹ Work Type Code N	¹² Well Type Code G	¹³ Cable/Rotary R	¹⁴ Lease Type Code S	¹⁵ Ground Level Elevation 6,269'
¹⁶ Multiple Y	¹⁷ Proposed Depth 6,450'	¹⁸ Formation Morrison	¹⁹ Contractor	²⁰ Spud Date 5-1-03

²¹ Proposed Casing and Cement Program

Hole Size	Casing Size	Casing weight/foot	Setting Depth	Sacks of Cement	Estimated TOC
12-1/4"	8-5/8"	24	320	185 sx	Surface
7-7/8"	4-1/2"	10.5	6,450'	874 sx	Surface
.
.
.

²² Describe the proposed program. If this application is to DEEPEN or PLUG BACK, give the data on the present productive zone and proposed new productive zone.
Describe the blowout prevention program, if any. Use additional sheets if necessary.

Will use 2000# BOP system.



²³ I hereby certify that the information given above is true and complete to the best of my knowledge and belief. Signature: <i>Brian Wood</i>		OIL CONSERVATION DIVISION	
Printed name: Brian Wood		Approved by: <i>[Signature]</i>	
Title: Consultant		Title: DEPUTY COMMISSIONER	
Date: Dec. 24, 2002		Approval Date: DEC 30 2002 Expiration Date: DEC 30 2003	
Phone: (505) 466-8120		Conditions of Approval: Attached <input type="checkbox"/>	

DISTRICT I
1625 N. French Dr., Hobbs, N.M. 88240

State of New Mexico
Energy, Minerals & Natural Resources Department

Form C-102
Revised August 15, 2000

DISTRICT II
811 South First, Artesia, N.M. 88210

Submit to Appropriate District Office
State Lease - 4 Copies
Fee Lease - 3 Copies

DISTRICT III
1000 Rio Brazos Rd., Aztec, N.M. 87410

OIL CONSERVATION DIVISION
2040 South Pacheco
Santa Fe, NM 87505

DISTRICT IV
2040 South Pacheco, Santa Fe, NM 87505

☐ AMENDED REPORT

WELL LOCATION AND ACREAGE DEDICATION PLAT

¹ API Number 30.-045-31305		² Pool Code 26980 & 71599		³ Pool Name GALLEGOS GALLUP & BASIN DAKOTA	
⁴ Property Code 23353		⁵ Property Name STATE "J" COM			⁶ Well Number 1E
⁷ OGRID No. 167067		⁸ Operator Name XTO ENERGY INC.			⁹ Elevation 6269'

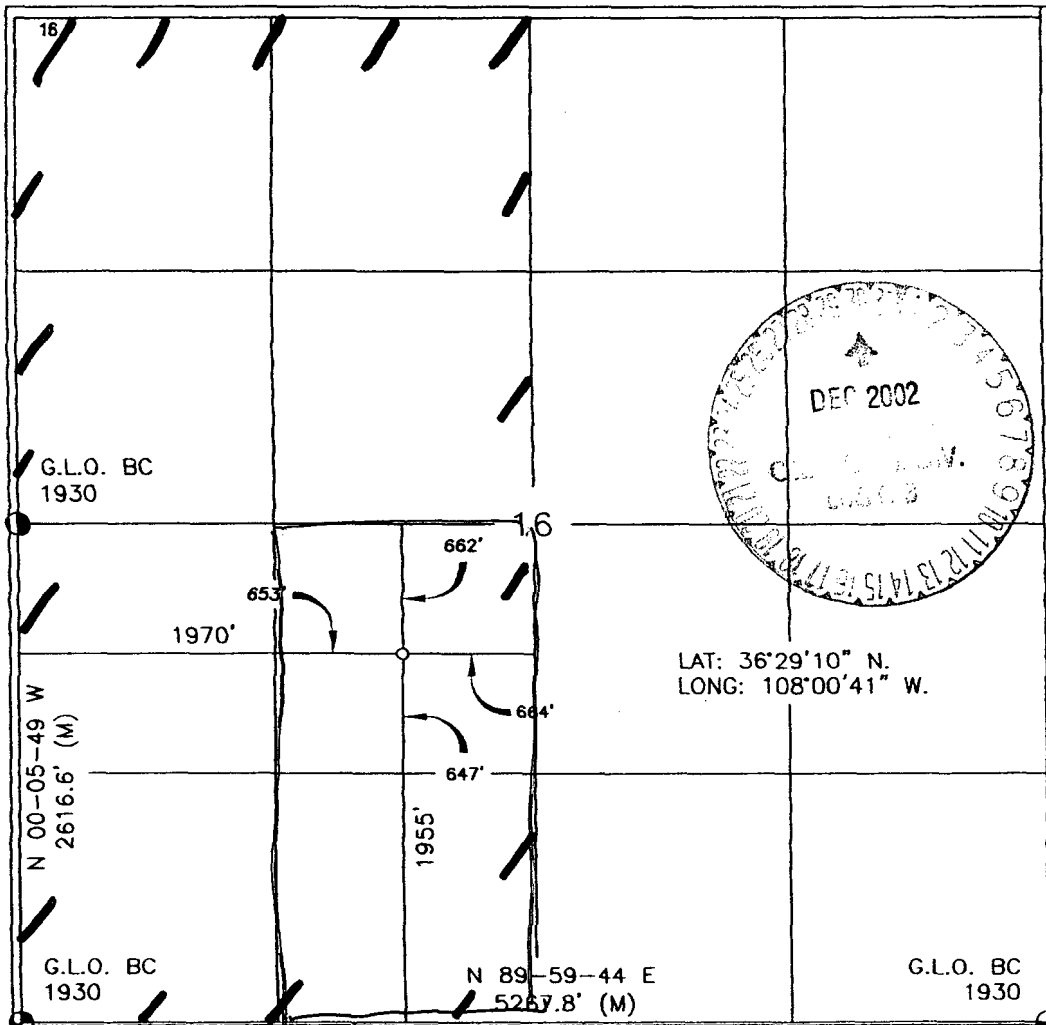
¹⁰ Surface Location

UL or lot no.	Section	Township	Range	Lot Idn	Feet from the	North/South line	Feet from the	East/West line	County
K.	16	26-N	11-W	.	1955'	SOUTH	1970'	WEST	SAN JUAN

¹¹ Bottom Hole Location If Different From Surface

UL or lot no.	Section	Township	Range	Lot Idn	Feet from the	North/South line	Feet from the	East/West line	County
¹² Dedicated Acres 80 - gllp 320 - Dakota					¹³ Joint or Infill		¹⁴ Consolidation Code C		¹⁵ Order No.

NO ALLOWABLE WILL BE ASSIGNED TO THIS COMPLETION UNTIL ALL INTERESTS HAVE BEEN CONSOLIDATED
OR A NON-STANDARD UNIT HAS BEEN APPROVED BY THE DIVISION



¹⁷ OPERATOR CERTIFICATION

I hereby certify that the information contained herein
is true and complete to the best of my knowledge and
belief

Signature Brian Wood
Printed Name **BRIAN WOOD**
Title **CONSULTANT**
Date **DEC. 24, 2002**

¹⁸ SURVEYOR CERTIFICATION

I hereby certify that the well location shown on this plat
was plotted from field notes of actual surveys made by
me or under my supervision, and that the same is true
and correct to the best of my belief

Date of Survey APRIL 19, 2002
Signature and Seal of Professional Surveyor
Certificate Number **14827**

BOP SCHEMATIC FOR DRILLING OPERATIONS CLASS 1 (2M) NORMAL PRESSURE

ROTATING HEAD
(OPTIONAL)

FILL UP LINE

FLOW LINE
TO PIT

BLIND
RAMS

PIPE
RAMS

KILL LINE
2" dia min.

TO CHOKE
MANIFOLD
2" dia min.

HCR VALVE (OPTIONAL)

MUD CROSS

2" (MIN) FULL OPENING
VALVE

1. Test BOP after installation:

Pressure test BOP to 200-300
psig (low pressure) for 5 min.

Test BOP to Working Press or
to 70% internal yield of surf csg
(10 min).

2. Test operation of (both) rams
on every trip.

3. Check and record Accumulator
pressure on every tour.

4. Re-pressure test BOP stack after
changing out rams.

5. Have kelly cock valve with handle available

6. Have safety valve and subs to fit all sizes of
drill string.

TESTING
PROCEDURE

** Remove check or ball
from check valve and
press test to same press
as BOP's **