

District II  
1301 W. Grand Avenue, Artesia, NM 88210

District III  
1000 Rio Brazos Rd., Aztec, NM 87410

District IV  
1220 S. St. Francis Dr., Santa Fe, NM 87505

OIL CONSERVATION DIVISION  
1220 South St. Francis Dr.  
Santa Fe, NM 87505

Submit to Appropriate District Office  
State Lease - 4 Copies  
Fee Lease - 3 Copies

☒ AMENDED REPORT

# SECRET

As Drilled

|                             |   |                                    |                      |
|-----------------------------|---|------------------------------------|----------------------|
| *API Number<br>30-039-29983 | *Pool Code<br>71629                           | *Pool Name<br>BASIN FRUITLAND COAL | DIST. 3              |
| *Property Code<br>17033     | *Property Name<br>ROSA UNIT                   |                                    | *Well Number<br>315A |
| *OGRID No.<br>120782        | *Operator Name<br>WILLIAMS PRODUCTION COMPANY |                                    | *Elevation<br>6553'  |

<sup>10</sup> Surface Location

|              |         |          |       |         |               |                  |               |                |               |
|--------------|---------|----------|-------|---------|---------------|------------------|---------------|----------------|---------------|
| UL or lot no | Section | Township | Range | Lot 1ch | Feet from the | North/South line | Feet from the | East/West line | County        |
| C            | 30      | 31N      | 4W    |         | 5             | NORTH            | 1675          | WEST           | RIO<br>ARRIBA |

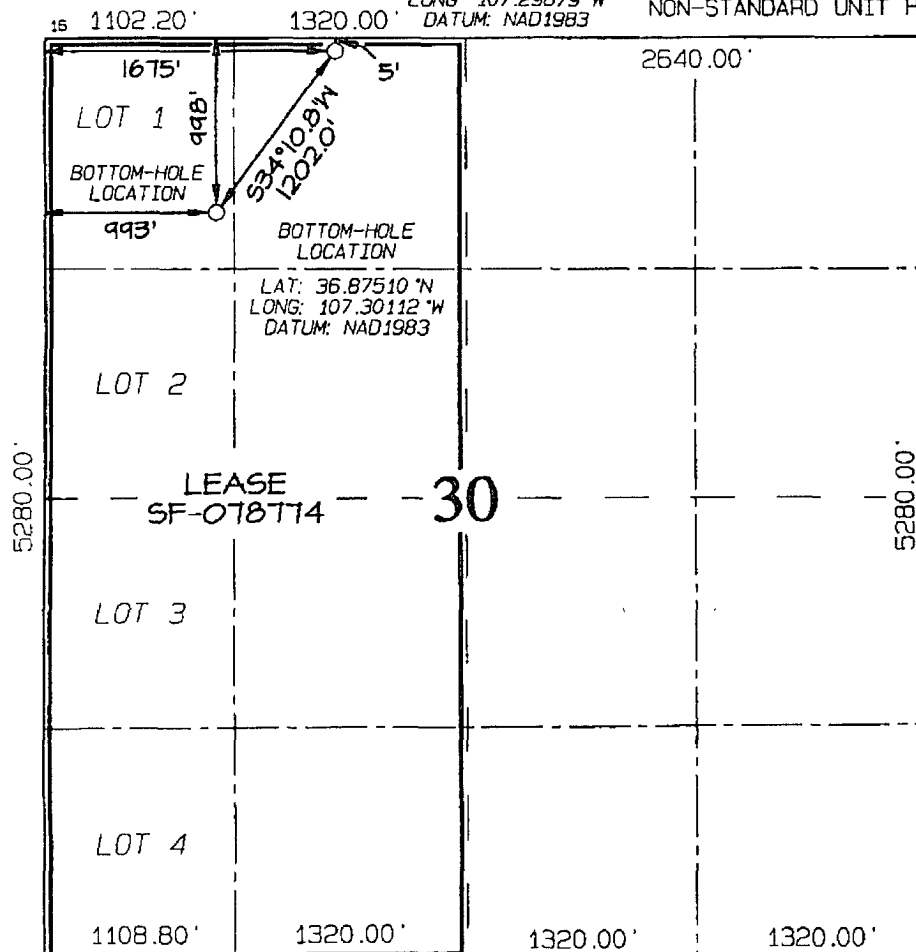
<sup>11</sup>Bottom Hole Location If Different From Surface

|              |         |          |       |         |               |                  |               |                |               |
|--------------|---------|----------|-------|---------|---------------|------------------|---------------|----------------|---------------|
| UL or lot no | Section | Township | Range | Lot Idn | Feet from the | North/South line | Feet from the | East/West line | County        |
| D            | 30      | 31N      | 4W    |         | 998           | NORTH            | 993           | WEST           | RIO<br>ARRIBA |

|                    |                      |                    |                       |              |
|--------------------|----------------------|--------------------|-----------------------|--------------|
| 12 Dedicated Acres | 294.00 Acres - (W/2) | 13 Joint or Infill | 14 Consolidation Code | 15 Order No. |
|--------------------|----------------------|--------------------|-----------------------|--------------|

SURFACE LOCATION  
LAT: 36.87782°N  
LONG 107.29879°W  
DATUM: NAD1983

NO ALLOWABLE WILL BE ASSIGNED TO THIS COMPLETION  
UNTIL ALL INTERESTS HAVE BEEN CONSOLIDATED OR A  
NON-STANDARD UNIT HAS BEEN APPROVED BY THE DIVISION



17 OPERATOR CERTIFICATION

I hereby certify that the information contained herein is true and complete to the best of my knowledge and belief, and that this organization either owns a working interest or unleased mineral interest in the land including the proposed bottom-hole location or has a right to drill this well at this location pursuant to a contract with an owner of such a mineral or working interest, or to a voluntary pooling agreement or a compulsory pooling order heretofore entered by the division.

Gracy Ross 11-5-07  
Signature Date

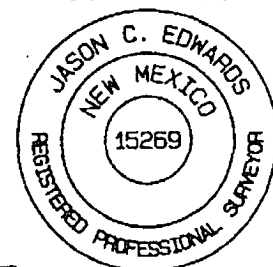
Printed Name Tracy Ross

## 18 SURVEYOR CERTIFICATION

I hereby certify that the well location shown on this plat was plotted from field notes of actual surveys made by me or under my supervision, and that the same is true and correct to the best of my belief.

Survey Date: DECEMBER 7, 2005

Signature and Seal of Professional Surveyor



JASON C. EDWARDS  
Certificate Number 15269

District IV  
1220 S. St. Francis Dr., Santa Fe, NM 87505

State of New Mexico  
Energy, Minerals & Natural Resources Department

OIL CONSERVATION DIVISION  
1220 South St. Francis Dr.  
Santa Fe, NM 87505

Form C-102

Revised October 12, 2005

Instructions on back

Submit to Appropriate District Office

State Lease - 4 Copies

Fee Lease - 3 Copies

☒ AMENDED REPORT

## WELL LOCATION AND ACREAGE DEDICATION PLAT

107732  
 107733  
 107734  
 107735  
 107736  
 107737  
 107738  
 107739  
 107740  
 107741  
 107742  
 107743  
 107744  
 107745  
 107746  
 107747  
 107748  
 107749  
 107750  
 107751  
 107752  
 107753  
 107754  
 107755  
 107756  
 107757  
 107758  
 107759  
 107760  
 107761  
 107762  
 107763  
 107764  
 107765  
 107766  
 107767  
 107768  
 107769  
 107770  
 107771  
 107772  
 107773  
 107774  
 107775  
 107776  
 107777  
 107778  
 107779  
 107780  
 107781  
 107782  
 107783  
 107784  
 107785  
 107786  
 107787  
 107788  
 107789  
 107790  
 107791  
 107792  
 107793  
 107794  
 107795  
 107796  
 107797  
 107798  
 107799  
 107800  
 107801  
 107802  
 107803  
 107804  
 107805  
 107806  
 107807  
 107808  
 107809  
 107810  
 107811  
 107812  
 107813  
 107814  
 107815  
 107816  
 107817  
 107818  
 107819  
 107820  
 107821  
 107822  
 107823  
 107824  
 107825  
 107826  
 107827  
 107828  
 107829  
 107830  
 107831  
 107832  
 107833  
 107834  
 107835  
 107836  
 107837  
 107838  
 107839  
 107840  
 107841  
 107842  
 107843  
 107844  
 107845  
 107846  
 107847  
 107848  
 107849  
 107850  
 107851  
 107852  
 107853  
 107854  
 107855  
 107856  
 107857  
 107858  
 107859  
 107860  
 107861  
 107862  
 107863  
 107864  
 107865  
 107866  
 107867  
 107868  
 107869  
 107870  
 107871  
 107872  
 107873  
 107874  
 107875  
 107876  
 107877  
 107878  
 107879  
 107880  
 107881  
 107882  
 107883  
 107884  
 107885  
 107886  
 107887  
 107888  
 107889  
 107890  
 107891  
 107892  
 107893  
 107894  
 107895  
 107896  
 107897  
 107898  
 107899  
 107900  
 107901  
 107902  
 107903  
 107904  
 107905  
 107906  
 107907  
 107908  
 107909  
 107910  
 107911  
 107912  
 107913  
 107914  
 107915  
 107916  
 107917  
 107918  
 107919  
 107920  
 107921  
 107922  
 107923  
 107924  
 107925  
 107926  
 107927  
 107928  
 107929  
 107930  
 107931  
 107932  
 107933  
 107934  
 107935  
 107936  
 107937  
 107938  
 107939  
 107940  
 107941  
 107942  
 107943  
 107944  
 107945  
 107946  
 107947  
 107948  
 107949  
 107950  
 107951  
 107952  
 107953  
 107954  
 107955  
 107956  
 107957  
 107958  
 107959  
 107960  
 107961  
 107962  
 107963  
 107964  
 107965  
 107966  
 107967  
 107968  
 107969  
 107970  
 107971  
 107972  
 107973  
 107974  
 107975  
 107976  
 107977  
 107978  
 107979  
 107980  
 107981  
 107982  
 107983  
 107984  
 107985  
 107986  
 107987  
 107988  
 107989  
 107990  
 107991  
 107992  
 107993  
 107994  
 107995  
 107996  
 107997  
 107998  
 107999  
 108000

WILSON, W.

|                             |   |                     |                                    |                                      |
|-----------------------------|---|---------------------|------------------------------------|--------------------------------------|
| *API Number<br>30-039-29983 |   | *Pool Code<br>71629 | *Pool Name<br>BASIN FRUITLAND COAL | UNIT 4445, DIST. 0<br>OIL GUNS, DIV. |
| *Property Code<br>17033     | *Property Name<br>ROSA UNIT                   |                     | *Well Number<br>315A               | DIST. 0                              |
| *GRID No.<br>120782         | *Operator Name<br>WILLIAMS PRODUCTION COMPANY |                     | *Elevation<br>6553'                |                                      |

<sup>10</sup> Surface Location

|              |         |          |       |         |               |                  |               |                |               |
|--------------|---------|----------|-------|---------|---------------|------------------|---------------|----------------|---------------|
| UL or lot no | Section | Township | Range | Lot 1ch | Feet from the | North/South line | Feet from the | East/West line | County        |
| C            | 30      | 31N      | 4W    |         | 5             | NORTH            | 1675          | WEST           | RIO<br>ARriba |

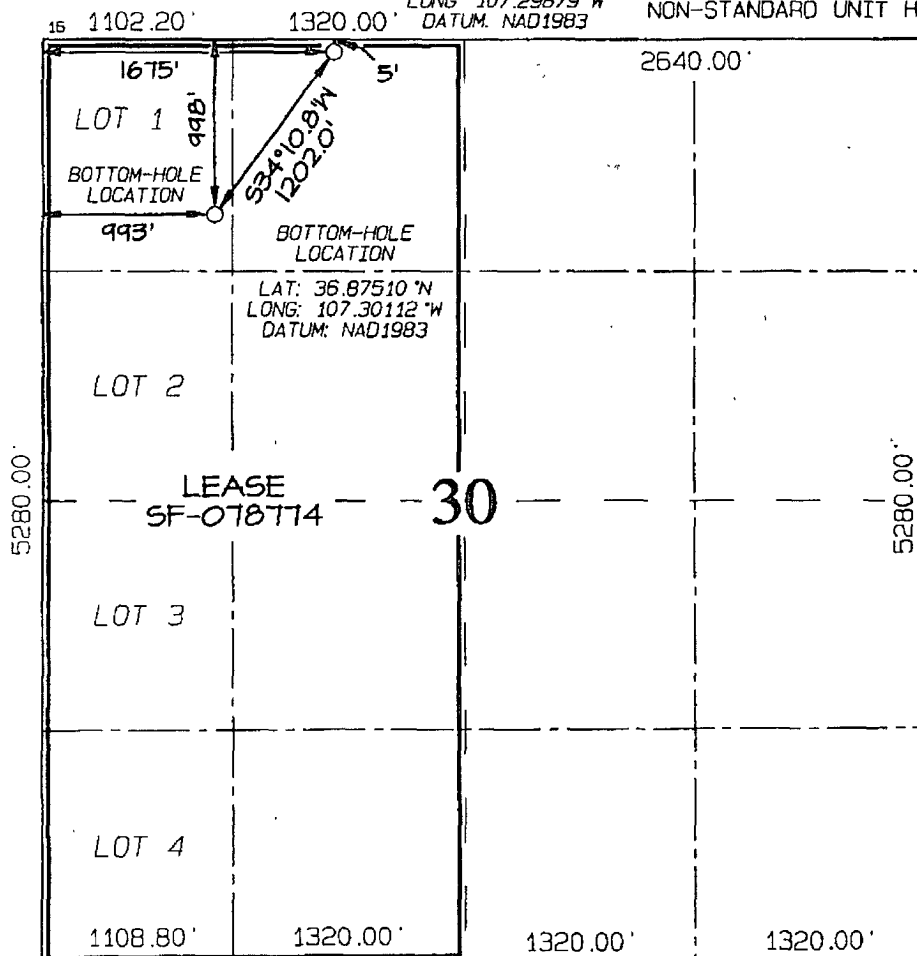
<sup>11</sup>Bottom Hole Location If Different From Surface

| UL or lot no | Section | Township | Range | Lot Idn | Feet from the | North/South line | Feet from the | East/West line | County        |
|--------------|---------|----------|-------|---------|---------------|------------------|---------------|----------------|---------------|
| D            | 30      | 31N      | 4W    |         | 998           | NORTH            | 993           | WEST           | RIO<br>ARRIBA |

|                      |                    |                       |              |
|----------------------|--------------------|-----------------------|--------------|
| 12 Dedicated Acres   | 13 Joint or Infill | 14 Consolidation Code | 15 Order No. |
| 294.00 Acres - (W/2) |                    |                       |              |

SURFACE LOCATION  
LAT: 36.87782°N  
LONG: 107.29879°W  
DATUM: NAD1983

NO ALLOWABLE WILL BE ASSIGNED TO THIS COMPLETION  
UNTIL ALL INTERESTS HAVE BEEN CONSOLIDATED OR A  
NON-STANDARD UNIT HAS BEEN APPROVED BY THE DIVISION



## 17 OPERATOR CERTIFICATION

I hereby certify that the information contained herein is true and complete to the best of my knowledge and belief, and that this organization either owns a working interest or unleased mineral interest in the land including the proposed bottom-hole location or has a right to drill this well at this location pursuant to a contract with an owner of a mineral interest in the land, or a voluntary pooling agreement or a compulsory pooling order heretofore entered by the Division.

Signature Gracy Ross Date 11-5-07

Printed Name Tracy Ross

**<sup>18</sup> SURVEYOR CERTIFICATION**

I hereby certify that the well location shown on this plat was plotted from field notes of actual surveys made by me or under my supervision, and that the same is true and correct to the best of my belief.

Survey Date: DECEMBER 7, 2005

Signature and Seal of Professional Surveyor



JASON C. EDWARDS  
Certificate Number 15269

**ROSA UNIT #315A  
BASIN FRUITLAND COAL**

Surface Location:  
5' FNL and 1675' FWL  
NE/4 NW/4 Sec 30(C), T31N, R04W  
Rio Arriba, NM

Bottom Hole Location:  
998' FNL and 993' FWL  
NW/4 NW/4 Sec 30(D), T31N, R04W  
Rio Arriba, NM

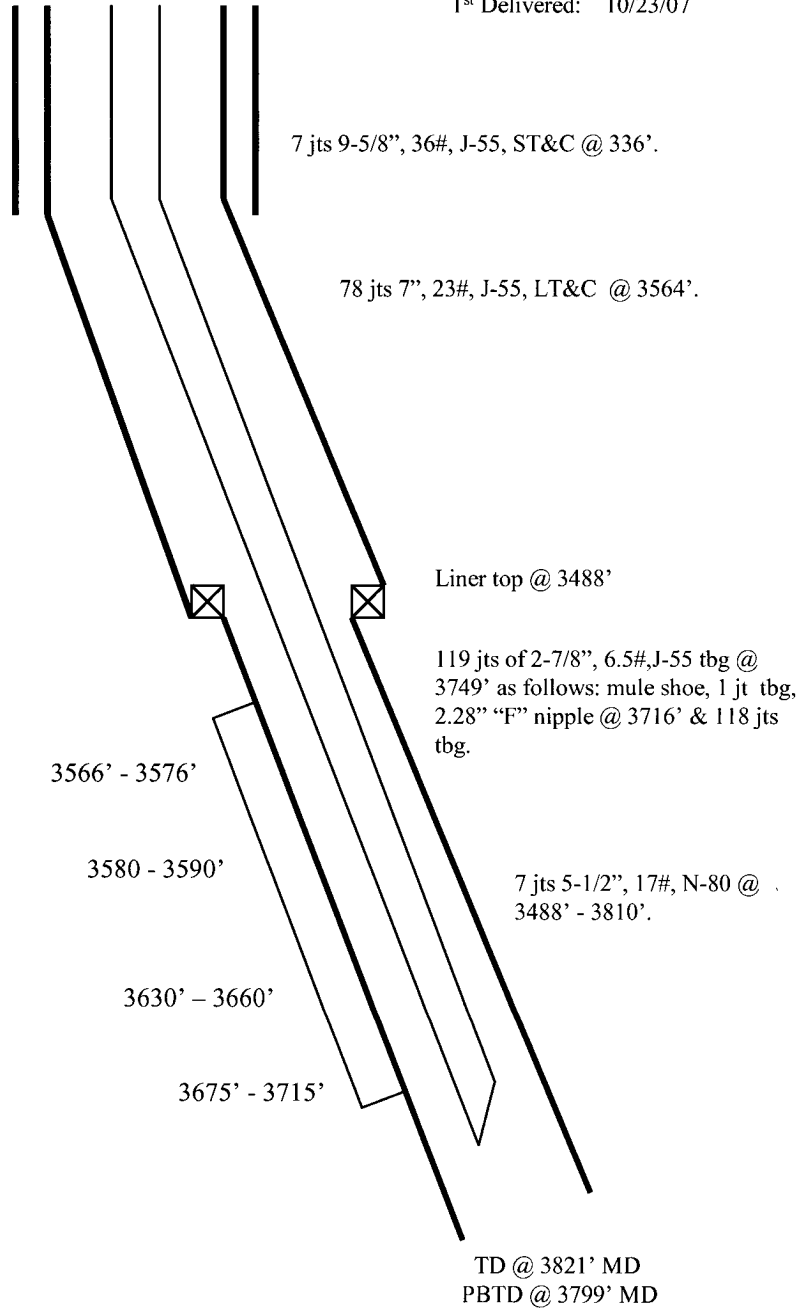
Elevation: 6553' GR  
API # 30-039-29983

Spud: 08/01/07

Completed: 10/12/07

1<sup>st</sup> Delivered: 10/23/07

| Top             | MD<br>Depth |
|-----------------|-------------|
| Ojo Alamo       | 3113'       |
| Kirtland        | 3225'       |
| Fruitland       | 3481'       |
| Base of Coal    | 3721'       |
| Pictured Cliffs | 3726'       |



| Hole Size | Casing      | Cement      | Volume      | Top of Cmt |
|-----------|-------------|-------------|-------------|------------|
| 12-1/4"   | 9-5/8", 36# | 185 sxs     | 261 cu.ft.  | Surface    |
| 8-3/4"    | 7", 23#     | 575 sxs     | 1125 cu.ft. | Surface    |
| 6-1/4"    | 5-1/2", 17# | Did Not Cmt |             |            |