

UNITED STATES
DEPARTMENT OF THE INTERIOR
BUREAU OF LAND MANAGEMENT

APPLICATION FOR PERMIT TO DRILL OR DEEPEN

1a. TYPE OF WORK

DRILL ☒

DEEPEN ☐

b. TYPE OF WELL

OIL
WELL ☐

GAS
WELL ☒

OTHER

SINGLE
ZONE ☒

MULTIPLE
ZONE ☐

2. NAME OF OPERATOR

XTO Energy Inc.

(505) 324-1090

3. ADDRESS AND TELEPHONE NO.

2700 Farmington Av, Bldg K, Ste 1, Farmington, NM 87401

4. LOCATION OF WELL (Report location clearly and in accordance with any State requirements.)

At surface

1345' FNL & 1420' FEL

At proposed prod. zone

Same

14. DISTANCE IN MILES AND DIRECTION FROM NEAREST TOWN OR POST OFFICE*

21 air miles S of Bloomfield

15. DISTANCE FROM PROPOSED*

LOCATION TO NEAREST

PROPERTY OR LEASE LINE, FT.

(Also to nearest drig. unit line, if any)

1,222'

18. DISTANCE FROM PROPOSED LOCATION*
TO NEAREST WELL, DRILLING, COMPLETED,
OR APPLIED FOR, ON THIS LEASE, FT.

160'

16. NO. OF ACRES IN LEASE

160

19. PROPOSED DEPTH

1,450'

17. NO. OF ACRES ASSIGNED
TO THIS WELL.

E/2 320

20. ROTARY OR CABLE TOOLS

Rotary

21. ELEVATIONS (Show whether DF, RT, GR, etc.)

6,437' ungraded

22. APPROX. DATE WORK WILL START*

Feb. 4, 2002

23.

PROPOSED CASING AND CEMENTING PROGRAM

SIZE OF HOLE	GRADE SIZE OF CASING	WEIGHT PER FOOT	SETTING DEPTH	QUANTITY OF CEMENT
8-3/4"	K-55 7"	20	160'	~50 cu. ft. & to surface
6-1/4"	K-55 4-1/2"	10.5	1,450'	~300 cu. ft. & to surface

This notice is subject to technical and
procedural review pursuant to 43 CFR 3165.3
and appeal pursuant to 43 CFR 3165.4.



SUBJECT TO COMPLIANCE WITH ATTACHED
"GENERAL REQUIREMENTS"

cc: BLM, FIMO, OCD (via BLM), Patton

IN ABOVE SPACE DESCRIBE PROPOSED PROGRAM: If proposal is to deepen, give data on present productive zone and proposed new productive zone. If proposal is to drill or deepen directionally, give pertinent data on subsurface locations and measured and true vertical depths. Give blowout preventer program, if any.

24.

SIGNED

TITLE

Consultant (505) 466-8120

DATE

1-24-02

(This space for Federal or State office use)

PERMIT NO.

APPROVAL DATE

Application approval does not warrant or certify that the applicant holds legal or equitable title to those rights in the subject lease which would entitle the applicant to conduct operations thereon.
CONDITIONS OF APPROVAL, IF ANY:

/s/ David J. Mankiewicz

JAN 28 2003

APPROVED BY

TITLE

DATE

*See Instructions On Reverse Side

MAOCD

DISTRICT I
1625 N. French Dr., Hobbs, N.M. 88240

DISTRICT II
811 South First, Artesia, N.M. 88210

DISTRICT III
1000 Rio Brazos Rd., Aztec, N.M. 87410

DISTRICT IV
2040 South Pacheco, Santa Fe, NM 87505

State of New Mexico
Energy, Minerals & Natural Resources Department

Form C-10
Revised August 15, 2000

Submit to Appropriate District Office
State Lease - 4 Copies
Fee Lease - 3 Copies

OIL CONSERVATION DIVISION
2040 South Pacheco
Santa Fe, NM 87505

☐ AMENDED REPORT

WELL LOCATION AND ACREAGE DEDICATION PLAT

¹ API Number 30-045-30980		² Pool Code 71629	³ Pool Name BASIN FRUITLAND COAL
⁴ Property Code 022669	⁵ Property Name CHARLY HEIRS COM		⁶ Well Number 1
⁷ GRID No. 167067	⁸ Operator Name XTO ENERGY INC.		⁹ Elevation 6437'

¹⁰Surface Location

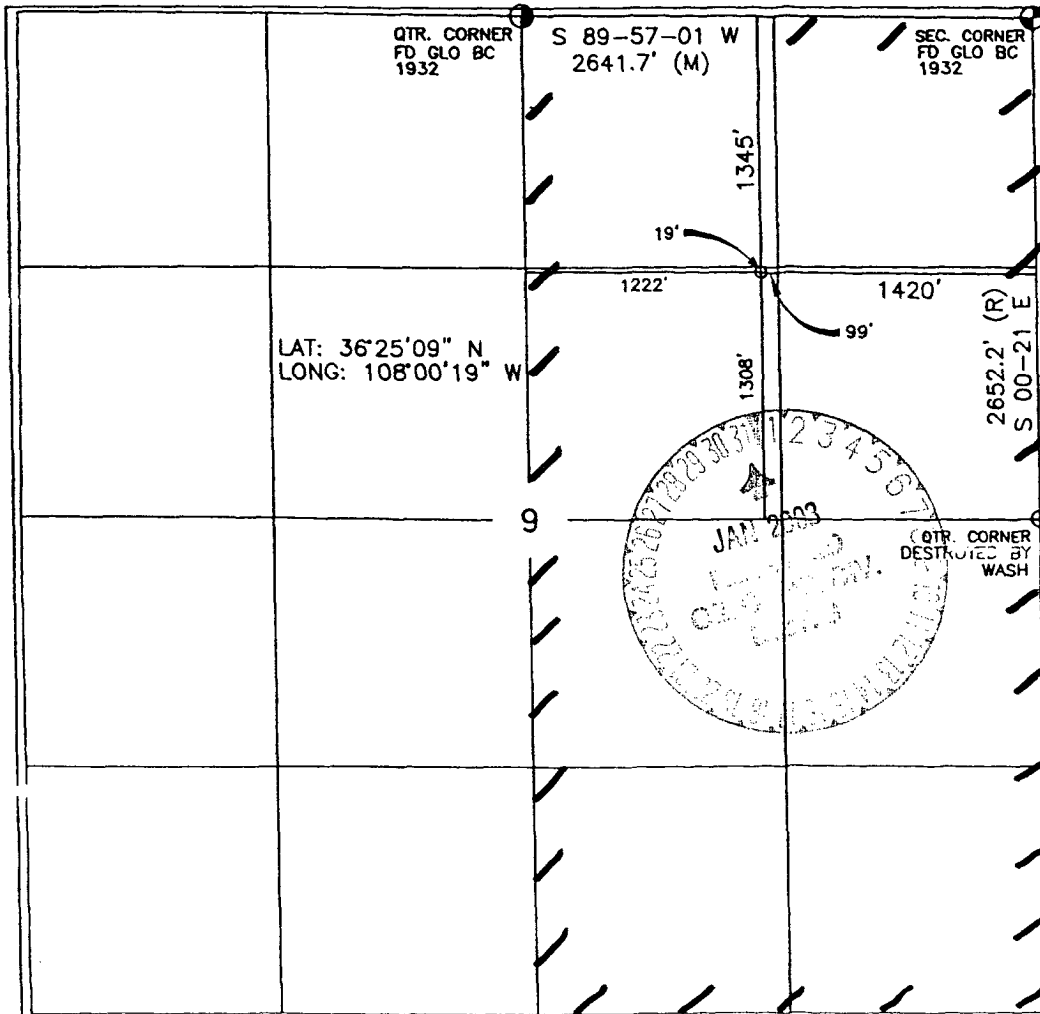
UL or lot no.	Section	Township	Range	Lot Idn	Feet from the	North/South line	Feet from the	East/West line	County
G	9	25-N	11-W		1345	NORTH	1420	EAST	SAN JUAN

¹¹Bottom Hole Location If Different From Surface

UL or lot no.	Section	Township	Range	Lot Idn	Feet from the	North/South line	Feet from the	East/West line	County
¹² Dedicated Acres 320.00			¹³ Joint or Infill		¹⁴ Consolidation Code C		¹⁵ Order No.		

NO ALLOWABLE WILL BE ASSIGNED TO THIS COMPLETION UNTIL ALL INTERESTS HAVE BEEN CONSOLIDATED OR A NON-STANDARD UNIT HAS BEEN APPROVED BY THE DIVISION

16



17 OPERATOR CERTIFICATION

I hereby certify that the information contained herein is true and complete to the best of my knowledge and belief.

Signature
Brian Wood

Printed Name

BRIAN WOOD

Title

CONSULTANT

Date

JAN. 24, 2002

18 SURVEYOR CERTIFICATION

I hereby certify that the well location shown on this plat was plotted from field notes of actual surveys made by me or under my supervision, and that the same is true and correct to the best of my knowledge and belief.

Signature and Seal of Professional Surveyor:
Brian Wood
8894

Certificate Number

XTO Energy Inc.
Charly Heirs Com. #1
1345' FNL & 1420' FEL
Sec. 9, T. 25 N., R. 11 W.
San Juan County, New Mexico

PAGE 1

Drilling Program

1. ESTIMATED FORMATION TOPS

<u>Formation Name</u>	<u>GL Depth</u>	<u>KB Depth</u>	<u>Sub sea Elevation</u>
Nacimiento Fm	000'	5'	+6,437'
Ojo Alamo Ss	525'	530'	+5,912'
Fruitland Coal	1,125'	1,130'	+5,312'
Pictured Cliffs Ss	1,350'	1,355'	+5,087'
Total Depth (TD)*	1,450'	1,455'	+4,987'

* all elevations reflect the ungraded ground level of 6,437'

2. NOTABLE ZONES

<u>Gas & Oil Zones</u>	<u>Water Zones</u>	<u>Coal Zone</u>
Fruitland	Nacimiento	Fruitland
Pictured Cliffs	Ojo Alamo	
	Fruitland	

Water zones will be protected with casing, cement, and weighted mud. Fresh water found while drilling will be recorded. Oil or gas shows will be tested for commercial potential based on the geologist's recommendations.

3. PRESSURE CONTROL

The drilling contract has not yet been awarded, thus the exact BOP system to be used is not yet known. A typical 2,000 psi stack and manifold are on PAGES 3 and 4. Testing procedures are on the same pages.

XTO Energy Inc.
Charly Heirs Com. #1
1345' FNL & 1420' FEL
Sec. 9, T. 25 N., R. 11 W.
San Juan County, New Mexico

PAGE 2

4. CASING & CEMENT

<u>Hole Size</u>	<u>O. D.</u>	<u>Weight (lb/ft)</u>	<u>Grade</u>	<u>Age</u>	<u>Connection</u>	<u>GL Setting Depth</u>
8-3/4"	7"	20	K-55	New	ST & C	160'
6-1/4"	4-1/2"	10.5	K-55	New	ST & C	1,450'

Surface casing will be cemented to the surface with ≈ 50 cubic feet (≈ 43 sacks) Class B + 1/4 lb/sk cello-flake + 2% CaCl_2 . Yield = 1.18 cubic feet per sack. Weight = 15.2 pounds per gallon. Volume = 100% excess. A guide shoe and insert float will be used. W.O.C. = 12 hours. Surface casing will be tested to 1500 psi for 30 minutes.

Production casing will be cemented to the surface. Total cement = 300 cubic feet. Volumes are calculated at 100% excess. If cement does not circulate to surface, then a temperature survey will be run to determine the actual cement top as needed. W.O.C. 12 hours. Test to 2000 psi.

Lead cement will be ≈ 110 sacks Class B light cement (65% cement/35% Poz with 6% gel) with 5 #/sack gilsonite + 1/4 #/sack Flocele. Yield = 1.99 cu ft/sk. Weight = 12.4 #/gal.

Tail cement will be ≈ 58 sacks 50/50 Class B Poz with 2% gel + 1/4 #/sack Flocele + 0.5% Halad-9. Yield = 1.38 cubic feet/sack. Weight = 13.5 #/gal.

Cement equipment will include a guide shoe, float collar, and 7 centralizers.

5. MUD PROGRAM

<u>RANGE</u>	<u>MUD TYPE</u>	<u>WEIGHT</u>
0' - 160'	Fresh-Spud	8.4
160' - TD	LSND	8.6

Lost circulation and absorption material will be on location.