

District I
1625 N. French Dr., Hobbs, NM 88240
District II
1301 W. Grand Avenue, Artesia, NM 88210
District III
1000 Rio Brazos Road, Aztec, NM 87410
District IV
1220 S. St. Francis Dr., Santa Fe, NM 87505

State of New Mexico
Energy Minerals and Natural Resources

Form C-144
June 1, 2004

Oil Conservation Division
1220 South St. Francis Dr.
Santa Fe, NM 87505

For drilling and production facilities, submit to
appropriate NMOCD District Office.
For downstream facilities, submit to Santa Fe
office

Pit or Below-Grade Tank Registration or Closure

Is pit or below-grade tank covered by a "general plan"? Yes ☐ No ☒

Type of action: Registration of a pit or below-grade tank ☐ Closure of a pit or below-grade tank ☒

Operator: McElvain Oil & Gas Properties, Inc. Telephone: 303-893-0933 Ex308 e-mail address: DebbyP@McElvain.com

Address: 1050 17th Street, Suite 1800, Denver, CO 80265

Facility or well name: Davis #1A API #: 30-039-29663 U/L or Qtr/Qtr B Sec 4 T 26N R 2W

County: Rio Arriba Latitude 36 31' 12.98" N Longitude 107 03' 03.10" W NAD: 1927 ☒ 1983 ☐

Surface Owner: Federal ☒ State ☐ Private ☐ Indian ☐

RCVD DEC 6 '07

Pit
Type: Drilling ☒ Production ☐ Disposal ☐
Workover ☐ Emergency ☐
Lined ☒ Unlined ☐
Liner type: Synthetic ☒ Thickness 12 mil Clay ☐
Pit Volume 6,412 bbl

Below-grade tank
Volume: bbl Type of fluid:
Construction material:
Double-walled, with leak detection? Yes ☐ If not, explain why not.
OIL CONS. DIV.
DIST. 3

Depth to ground water (vertical distance from bottom of pit to seasonal high water elevation of ground water.)

Less than 50 feet	(20 points)
50 feet or more, but less than 100 feet	(10 points)
100 feet or more	(0 points) 0

Wellhead protection area: (Less than 200 feet from a private domestic water source, or less than 1000 feet from all other water sources.)

Yes	(20 points)
No	(0 points) 0

Distance to surface water: (horizontal distance to all wetlands, playas, irrigation canals, ditches, and perennial and ephemeral watercourses.)

Less than 200 feet	(20 points)
200 feet or more, but less than 1000 feet	(10 points)
1000 feet or more	(0 points) 0

Ranking Score (Total Points)

If this is a pit closure: (1) Attach a diagram of the facility showing the pit's relationship to other equipment and tanks. (2) Indicate disposal location: (check the onsite box if you are burying in place) onsite ☐ offsite ☒ If offsite, name of facility Adobe. (3) Attach a general description of remedial action taken including remediation start date and end date. (4) Groundwater encountered. No ☒ Yes ☐ If yes, show depth below ground surface ft. and attach sample results.

(5) Attach soil sample results and a diagram of sample locations and excavations.

Additional Comments:

Hauled Liner to disposal

No remediation was required.

The pit was closed on 11/19/2007

I hereby certify that the information above is true and complete to the best of my knowledge and belief. I further certify that the above-described pit or below-grade tank has been/will be constructed or closed according to NMOCD guidelines ☒, a general permit ☐, or an (attached) alternative OCD-approved plan ☐.

Date: 12/03/2007

Printed Name/Title Deborah Powell/Eng Tech Supervisor Signature

Deborah K Powell

Your certification and NMOCD approval of this application/closure does not relieve the operator of liability should the contents of the pit or tank contaminate ground water or otherwise endanger public health or the environment. Nor does it relieve the operator of its responsibility for compliance with any other federal, state, or local laws and/or regulations.

Approval:

Deputy Oil & Gas Inspector,
District #3

Printed Name/Title

Signature

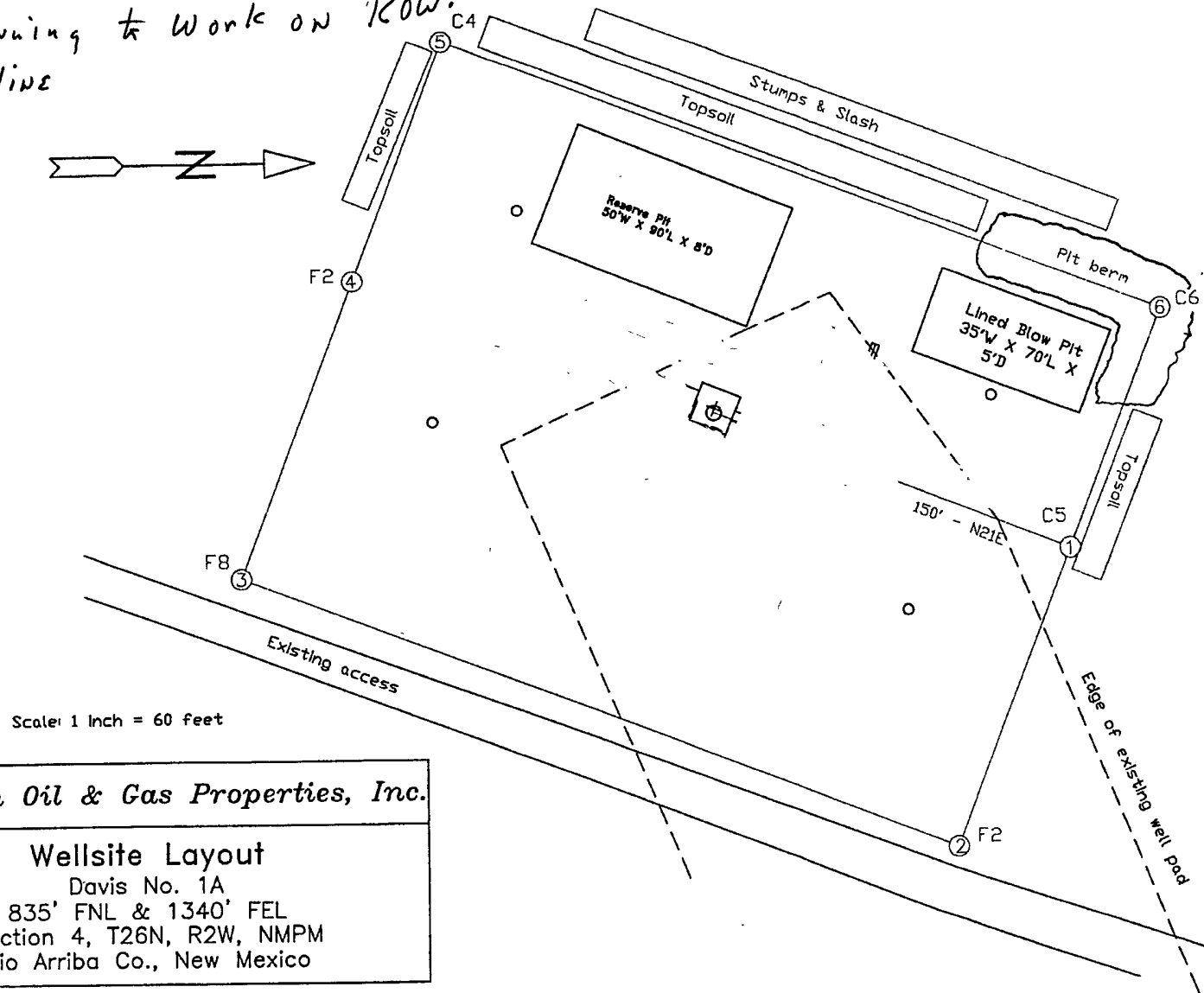
Deborah K Powell

Date:

JAN 08 2008

12-3-07

Production Equipt. Not on Location
Williams Continuing to Work on ROW.
For the Pipeline



McElvain Oil & Gas Properties, Inc.
Wellsite Layout
Davis No. 1A
835' FNL & 1340' FEL
Section 4, T26N, R2W, NMPM
Rio Arriba Co., New Mexico

The site plan shows a rectangular area with dimensions 100' by 125'. Key features include:

- 10' DIKE** along the top edge.
- RESERVE PIT 55' X 160'** located in the upper left.
- BLOW PIT** located in the upper right.
- DRAIN TO RESERVE** connecting the Blow Pit to the Reserve Pit.
- N21°E LAYDOWN 150'** indicated by a dashed line.
- EDGE OF BUILT AND ABANDONED WELLPAD** shown as a dashed line extending from the bottom left towards the center.
- EXISTING ROADWAY** located at the bottom of the plan.
- Dimensions:** 100' (top), 125' (left and right), 150' (horizontal distance from left edge to center), and 35' (vertical distance from center to top edge).
- Grid Lines:** A, B, C (horizontal) and ③, ④, ⑤, ⑥ (vertical).

