

UNITED STATES
DEPARTMENT OF INTERIOR
BUREAU OF LAND MANAGEMENT

FORM APPROVED
Budget Bureau No 1004-0135
Expires: March 31, 1993

SUNDRY NOTICE AND REPORTS ON WELLS

Do not use this form for proposals to drill or to deepen or reentry to a different reservoir. Use "APPLICATION TO DRILL" for permit for such proposals

SUBMIT IN TRIPLICATE

RECEIVED
APR 01 2008

Bureau of Land Management
Farmington Field Office

1. Type of Well
Oil Well Gas Well ☒ Other

2. Name of Operator
WILLIAMS PRODUCTION COMPANY

3. Address and Telephone No.
PO Box 640 Aztec, NM 87410-0640

4. Location of Well (Footage, Sec., T., R., M., or Survey Description)
275' FSL & 1450' FWL Sec 4, T31N, R6W NMPM

5. Lease Designation and Serial No
NMSF-078765

6. If Indian, Allottee or Tribe Name

7. If Unit or CA, Agreement Designation
Rosa Unit

8. Well Name and No.
Rosa Unit COM #60B

9. API Well No.
30-045-34251

10. Field and Pool, or Exploratory Area
BLANCO MV/BASIN MANCOS/BASIN
DK

11. County or Parish, State
San Juan, New Mexico

CHECK APPROPRIATE BOX(S) TO INDICATE NATURE OF NOTICE, REPORT, OR OTHER DATA

TYPE OF SUBMISSION

Notice of Intent

☒ Subsequent Report

Final Abandonment

TYPE OF ACTION

Abandonment

Recompletion

Plugging Back

Casing Repair

Altering Casing

☒ Other Multiple completion

Change of Plans

New Construction

Non-Routine Fracturing

Water Shut-Off

Conversion to Injection

Dispose Water

(Note Report results of multiple completion on Well Completion or Recompletion Report and Log form.)

13. Describe Proposed or Completed Operations (Clearly state all pertinent details, and give pertinent dates, including estimated date of starting any proposed work. If well is directionally drilled, give subsurface locations and measured and true vertical depths for all markers and zones pertinent to this work.)*

Williams Production Company, LLC. hereby requests authority to drill this as a Mesa Verde/Mancos/Dakota Triple completion as per attached plat and drilling plan. The plan is for the Mancos and Dakota to be commingled at completion.

NSL will be required / NSP for the Basin Mancos will be required.

HOLD C104 FOR NSL - Basin Mancos, Basin Dakota
NSP - Basin Mancos
CONDITIONS OF APPROVAL
Adhere to previously issued stipulations.

RCVD APR 7 '08

OIL CONS. DIV.

DIST. 3

14. I hereby certify that the foregoing is true and correct

Signed Larry Higgins
Larry Higgins

Title Drilling C.O.M.

Date 4-1-08

(This space for Federal or State office use)

Approved by [Signature]

Title Petr. Eng.

Date 4/4/08

Conditions of approval, if any:

District I
1625 N. French Dr., Hobbs, NM 88240

District II
1301 W. Grand Avenue, Artesia, NM 88210

District III
1000 Rio Brazos Rd., Aztec, NM 87410

District IV
1220 S. St. Francis Dr., Santa Fe, NM 87505

State of New Mexico
Energy, Minerals & Natural Resources Department

OIL CONSERVATION DIVISION
1220 South St. Francis Dr.
Santa Fe, NM 87505

Form C-102
Revised October 12, 2005
Instructions on back
Submit to Appropriate District Office
State Lease - 4 Copies
Fee Lease - 3 Copies

☐ AMENDED REPORT

WELL LOCATION AND ACREAGE DEDICATION PLAT

*API Number		*Pool Code		*Pool Name	
		97232 / 72319 / 71599		BASIN MANCOS / BLANCO MESAVERDE / BASIN DAKOTA	
*Property Code		*Property Name			*Well Number
17033		ROSA UNIT COM			60B
*GRID No.		*Operator Name			*Elevation
120782		WILLIAMS PRODUCTION COMPANY			6416'

¹⁰ Surface Location

UL or lot no.	Section	Township	Range	Lot Idn	Feet from the	North/South line	Feet from the	East/West line	County
N	4	31N	6W		275	SOUTH	1450	WEST	SAN JUAN

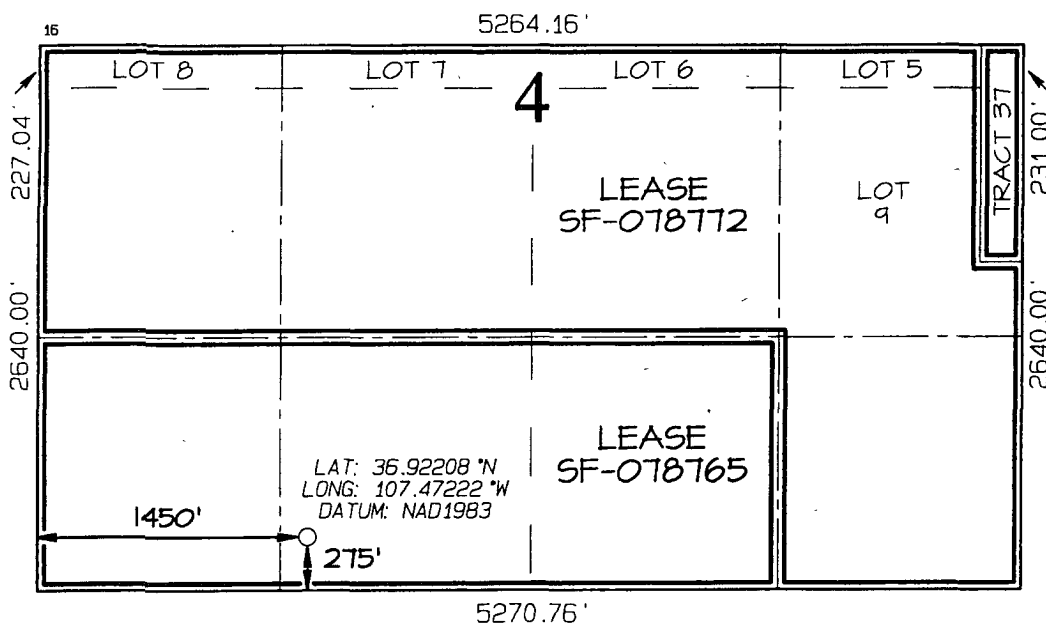
¹¹ Bottom Hole Location If Different From Surface

UL or lot no.	Section	Township	Range	Lot Idn	Feet from the	North/South line	Feet from the	East/West line	County
¹² Dedicated Acres					¹³ Joint or Infill	¹⁴ Consolidation Code	¹⁵ Order No		
~ SEE NOTE BELOW ~									

346.29 Acres (MV) - Entire Section

343.23 Acres (MN, DK) - Entire Section except Tract 37

NO ALLOWABLE WILL BE ASSIGNED TO THIS COMPLETION
UNTIL ALL INTERESTS HAVE BEEN CONSOLIDATED OR A
NON-STANDARD UNIT HAS BEEN APPROVED BY THE DIVISION



¹⁷ OPERATOR CERTIFICATION

I hereby certify that the information contained herein is true and complete to the best of my knowledge and belief, and that this organization either owns a working interest or unleased mineral interest in the land including the proposed bottom-hole location or has a right to drill this well at this location pursuant to a contract with an owner of such a mineral or working interest, or to a voluntary pooling agreement or a compulsory pooling order heretofore entered by the division.

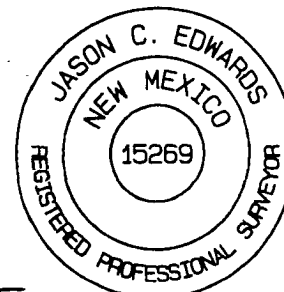
Larry Higgins 4-1-08
Signature Date
LARRY HIGGINS
Printed Name

¹⁸ SURVEYOR CERTIFICATION

I hereby certify that the well location shown on this plat was plotted from field notes of actual surveys made by me or under my supervision, and that the same is true and correct to the best of my belief.

Date Revised: MARCH 11, 2008
Date of Survey: MAY 15, 2006

Signature and Seal of Professional Surveyor



JASON C. EDWARDS
Certificate Number 15269



WILLIAMS PRODUCTION COMPANY

DRILLING PLAN

(Note: This procedure will be adjusted on site based upon actual conditions)

DATE: 4/1/2008

WELL NAME: Rosa Unit #60B **FIELD:** Blanco MV/DK/Mancos

SURFACE LOCATION: SE/4 SW/4 Sec. 4- T31N-R6W **SURFACE:** BLM
Rio Arriba, NM

ELEVATION: 6,416ft. (GL) **MINERALS:** BLM

LEASE # SF-078765 **API#:** 30-039-34251

TOTAL DEPTH: 8,235ft. (MD)

I. **GEOLOGY:** Surface formation - San Jose

A. **FORMATION TOPS:** (KB)

	<u>MD</u>		<u>MD</u>
20in. Casing	400ft.	Graneros sh	7,785ft.
Ojo Alamo	2,375ft	Dakota ss	7,915ft.
Kirtland sh	2,490ft.	Morrison fm	8,135ft.
Fruitland cl	2,915ft.		
Pictured Cliffs ss	3,195ft.		
Lewis sh	3,500ft.		
10-3/4in. Casing	3,670ft.		
Cliff House ss trans	5,085ft.		
Cliff House ss	5,400ft.		
Menefee	5,445ft.		
Point Lookout ss	5,685ft.		
7-5/8in. Liner	6,020ft.		
Mancos sh	6,020ft.		
Gallup ss	7,020ft.		
Greenhorn ls	7,735ft.	Total Depth (MD)	8,235ft.

B. **LOGGING PROGRAM:** PEX Only from 10-3/4" csg. shoe to 9-7/8" TD; (PEX-ECS-HNGS) OH log will be run from 7-5/8" shoe to TD, FMI-Sonic Scanner and MSCT over intervals of interest(selected by on-site Geologist). *Subject to change as wellbore conditions dictate.* Mud Logger on @ 6,020ft to TD.

C. **NATURAL GAUGES:** Gauge any noticeable increases in gas flow. Record all gauges in Tour book and on morning reports.

II. DRILLING

- A. **SURFACE HOLE:** PU 12 1/4", 17 1/2" 26" in. Bit, Drill / ream to +400 ft. (MD). Drill with water and Gel sweeps. RU and run 20 in. Surface Casing, set at 400 ft.+ (MD). NU 20in. SOW X 21-1/4 in. 2000 psi Braden Head. NU 20in annular preventer. The surface casing will be pressure tested to 1400 psi in conjunction with the BOP test before drilling out cement. Run TOTCO surveys at 200ft. and 400ft.
- B. **INTERMEDIATE HOLE:** Drill out of 20in. csg. with a 14-3/4in. Tri-cone bit. Use LSND Mud System to 10-3/4 in. intermediate casing point. Increase Viscosity of mud system to 40+ to run casing. Treat for lost circulation as necessary. Obtain 100% returns prior to cementing. Notify Engineering of any mud losses. Circulate cement to surface. NU 21-1/4in 2,000 psi X 13-5/8 in. "B" Section. Run TOTCO Surveys each 500 ft.
- C. **INTERMEDIATE LINER HOLE:** Drill out of 10-3/4in. csg. with a 9-7/8in. air hammer bit. Use Air Drilling System, to 7-5/8 in. intermediate casing point. Run & set 7-5/8" liner. Circulate cement to 100ft. above TOL. Run TOTCO Surveys each 500 ft.
- D. **PRODUCTION HOLE:** Drill out of 7-5/8in. csg with a 6-3/4in tri-cone bit. Use Dispersed Mud System with water loss less than 8 ml/30 min. POOH, run OH logs. Increase Viscosity of mud system to 40+ to run casing. Treat for lost circulation as necessary. Notify Engineering of any mud losses.
- E. **BOP TESTING:** While drill pipe is in use, the pipe rams and the blind rams will be function tested once each trip. The anticipated reservoir is expected to be less than 1300 psi, so the BOPE will be tested to **250 psi (Low) for 5 minutes and 1500 psi (High) for 10 minutes**. Utilize a BOPE Testing Unit with a recording chart and appropriate test plug for testing. The surface and Intermediate casing will be pressure tested to **1500 psi for 30 minutes** after the BOPE test before drilling out cement. The drum brakes will be inspected and tested each tour. **All tests, inspections and SPR's will be recorded in the tour book as to time and results.**

III. MATERIALS

A. CASING PROGRAM:

<u>CASING TYPE</u>	<u>HOLE SIZE</u>	<u>DEPTH</u>	<u>CASING SIZE</u>	<u>WT. & GRADE</u>
Surface	26in.	+/- 400'	20in.	94#/ft X-52-BUTT
Intermediate	14-3/4in.	+/- 3,670'	10-3/4in.	45.5#/ft K-55-BUTT
Drilling Liner	9-7/8in.	+/- 3,520ft.- 6,020ft.	7-5/8in.	26.4#/ft K-55-LTC
Longstring	6-3/4in.	+/- 8,259ft.	5-1/2in.	17#/ft N-80-LTC


B. FLOAT EQUIPMENT:

1. **SURFACE CASING:** 20in. notched regular pattern guide shoe. Run one (1) standard centralizer on each of the bottom three (3) joints
2. **INTERMEDIATE CASING:** 10-3/4in. cement nose guide shoe with a self-fill insert float. Place float collar one joint above the shoe. Install one Turbulent centralizer on each of the bottom (3) joints and one standard centralizer every (3) joints to the surface casing.
3. **DRILLING LINER:** 7-5/8in. Whirler type cement nose guide shoe with a latch collar on top of bottom joint.
4. **LONGSTRING CASING:** 5-1/2in. cement nose guide shoe with a Float Collar on top of bottom joint.

C. CEMENTING:

(Note: Volumes may be adjusted onsite due to actual conditions)

1. SURFACE: Lead: 300 sx (633 cu.ft.) of class Premium Lite FM, 8% gel+2% CaCl₂+2% Pheno Seal+1/4# cello-flake/sk (Yield = 1.72 cu.ft./sk, Weight = 12.1 #/gal.). Tail: 270sx (381 cu.ft.) of class "Type III" with 1/4# cello-flake/sk+2% CaCl₂ (Yield = 1.41 cu.ft./sk, Weight = 14.5#/gal.). 125% excess in lead and tail to circulate to surface. Total volume = 983 cu.ft. WOC 12 hours. Run a temperature survey after 8 hours if cement is not circulated.
2. INTERMEDIATE: 10 bbl fresh water spacer Lead: 1765sx (3675 cu.ft.) of class "Premium Lite FM" with 8% gel and 1/4# cello-flake/sk + 2% pheno seal (Yield = 2.08 cu.ft./sk, Weight = 12.1 #/gal.). Tail: 200sx (278 cu.ft.) of class "Type III" with 1/4# cello-flake/sk (Yield = 1.39 cu.ft./sk, Weight = 14.5#/gal.). 100% excess in lead to circulate to surface. Total volume = 5271 cu.ft. WOC 12 hours. Run a temperature survey after 8 hours if cement is not circulated.
3. DRILLING LINER: 10 bbl gelled water +0.25 gal/bbl XLFC-5 spacer and 10 bbl fresh water spacer. 400 sx (854 cu. Ft.) "Premium Lite HS FM"+1% FL-52+0.2%CD-32+2% Pheno Seal+ 3 #/sk CSE+1/4 lb/sk cello-flake (Yield = 2.14 cu ft/sk, weight = 12.3 #/gal). The 50% excess should cover liner top. Total volume 1152 ft³. WOC 12 hours.
4. LONGSTRING: 20 bbl Mud Clean II as spacer Lead: 110 sx (269 cu ft) Premium Lite HS FM +1% FL-52+0.2% CD-32+3 #/sk CSE+2% Pheno Seal+1/4 #/sk cello-flake (Yield=2.44 #/sx, Weight=11.8 #/gal). Tail: 135 sx (289 cu ft) Premium Lite HS FM+1% FL-52+0.2% CD-32+3 #/skCSE+2% Pheno Seal+1/4 #/sk Cello-flake (Yield=2.14 cu ft/sk, Weight =12.30 #/gal) Displace cement at a minimum of 8 BPM. The 50% excess in slurry to place 100' into liner. Total volume 966 ft³. WOC 12 hours.


Gary C. Sizemore
Sr. Drilling Engineer