

District I  
1625 N. French Dr., Hobbs, NM 88240

District II  
1301 W. Grand Avenue, Artesia, NM 88210

District III  
1000 Rio Brazos Road, Aztec, NM 87410

District IV  
1220 S. St. Francis Dr., Santa Fe, NM 87505

State of New Mexico  
Energy Minerals and Natural Resources

Oil Conservation Division  
1220 South St. Francis Dr.  
Santa Fe, NM 87505

Form C-101  
May 27, 2004

Submit to appropriate District Office

AMENDED REPORT

**APPLICATION FOR PERMIT TO DRILL, RE-ENTER, DEEPEN, PLUGBACK, OR ADD A ZONE**

Operator Name and Address <b>ENERDYNE LLC P.O. BOX 502, ALBUQUERQUE, NM 87103</b>		OGRID Number <b>185239</b>
Property Code <b>25220</b>	Property Name <b>ENDY</b>	Well No. <b>-ENDY 101</b>
Proposed Pool 1 <b>BLACKEYE MESAVERDE</b>		Proposed Pool 2

**Surface Location**

UL or lot no.	Section	Township	Range	Lot Idn	Feet from the	North/South line	Feet from the	East/West line	County
<b>C</b>	<b>32</b>	<b>20N</b>	<b>9W</b>		<b>1250</b>	<b>NORTH</b>	<b>1900</b>	<b>WEST</b>	<b>McKINLEY</b>

**Proposed Bottom Hole Location If Different From Surface**

UL or lot no.	Section	Township	Range	Lot Idn	Feet from the	North/South line	Feet from the	East/West line	County

**Additional Well Information**

Work Type Code <b>N</b>	Well Type Code <b>O</b>	Cable/Rotary <b>R</b>	Lease Type Code <b>S</b>	Ground Level Elevation <b>6503' GR</b>
Multiple <b>NO</b>	Proposed Depth <b>1200'</b>	Formation <b>MENEFEE</b>	Contractor <b>ENERDYNE</b>	Spud Date <b>5-10-08</b>
Depth to Groundwater <b>200'</b>	Distance from nearest fresh water well <b>&gt; 1000'</b>	Distance from nearest surface water <b>&gt; 1000'</b>		
Pit: Liner: Synthetic <input checked="" type="checkbox"/> <b>12</b> mils thick Clay <input type="checkbox"/> Pit Volume: <b>210</b> bbls Drilling Method: Fresh Water <input checked="" type="checkbox"/> Brine <input type="checkbox"/> Diesel/Oil-based <input type="checkbox"/> Gas/Air <input type="checkbox"/>				

**Proposed Casing and Cement Program**

Hole Size	Casing Size	Casing weight/foot	Setting Depth	Sacks of Cement	Estimated TOC
<b>8.75"</b>	<b>7.00"</b>	<b>20.0#</b>	<b>120'</b>	<b>35</b>	<b>SURFACE</b>
<b>6.25"</b>	<b>4.50"</b>	<b>10.5#</b>	<b>1200'</b>	<b>135</b>	<b>SURFACE</b>

**Describe the proposed program. If this application is to DEEPEN or PLUG BACK, give the data on the present productive zone and proposed new productive zone. Describe the blowout prevention program, if any. Use additional sheets if necessary.**

5-10-08 SPUD WELL. DRILL 8.75" HOLE TO 127' GR. SET 127' OF 7.00" SURFACE CASING AND CEMENT TO SURFACE WITH 35 SACKS OF CLASS "B" CEMENT. TEST SURFACE CASING AND DRILL OUT CEMENT. DRILL 6.25" HOLE WITH FRESH WATER AND POLYMER TO TEST THE 1100' MENEFEE SANDSTONE. IF OIL IS PRESENT, SET 4.50" CASING TO TD AND CEMENT TO SURFACE WITH 135 SACKS OF CLASS "B" CEMENT. TEST CASING AND PERFORATE OIL ZONE. BOP WILL BE INSTALLED FOR PRESSURE CONTROL WITH KILL LINE FROM MUD PUMP AND FLOW LINE TO PIT.

*Notify OCD 24 Hours before spud HOLD C-104 FOR NSL*

I hereby certify that the information given above is true and complete to the best of my knowledge and belief. I further certify that the drilling pit will be constructed according to NMOCD guidelines , a general permit , or an (attached) alternative OCD approval plan .

Printed name: **DON L. DHANOSH**  
Title: **GENERAL MANAGER**  
E-mail Address: **DHANOSH426@AOL.COM**

**OIL CONSERVATION DIVISION**

Approved by: *[Signature]*  
Title: **DEPUTY OIL & GAS INSPECTOR DIST. #3**  
Approval Date: **APR 24 2008** Expiration Date: **APR 24 2010**

Date: **4-21-08** Phone: **1-505-332-7807**

Conditions of Approval Attached

**APR 24 2008**

*AV*

DISTRICT I  
1625 N. French Dr., Hobbs, N.M. 88240

DISTRICT II  
1301 W. Grand Ave., Artesia, N.M. 88210

DISTRICT III  
1000 Rio Brazos Rd., Aztec, N.M. 87410

DISTRICT IV  
1220 South St. Francis Dr., Santa Fe, NM 87505

State of New Mexico  
Energy, Minerals & Natural Resources Department

OIL CONSERVATION DIVISION  
1220 South St. Francis Dr.  
Santa Fe, NM 87505

Form C-102  
Revised June 10, 2003

Submit to Appropriate District Office  
State Lease - 4 Copies  
Fee Lease - 3 Copies

AMENDED REPORT

WELL LOCATION AND ACREAGE DEDICATION PLAT

<sup>1</sup> API Number 30-031-21103	<sup>2</sup> Pool Code 6290	<sup>3</sup> Pool Name BLACKEYE-MESAVERDE
<sup>4</sup> Property Code 25220	<sup>5</sup> Property Name ENDY	<sup>6</sup> Well Number 101
<sup>7</sup> OGRID No. 185239	<sup>8</sup> Operator Name ENERDYNE LLC	<sup>9</sup> Elevation 6503'

<sup>10</sup> Surface Location

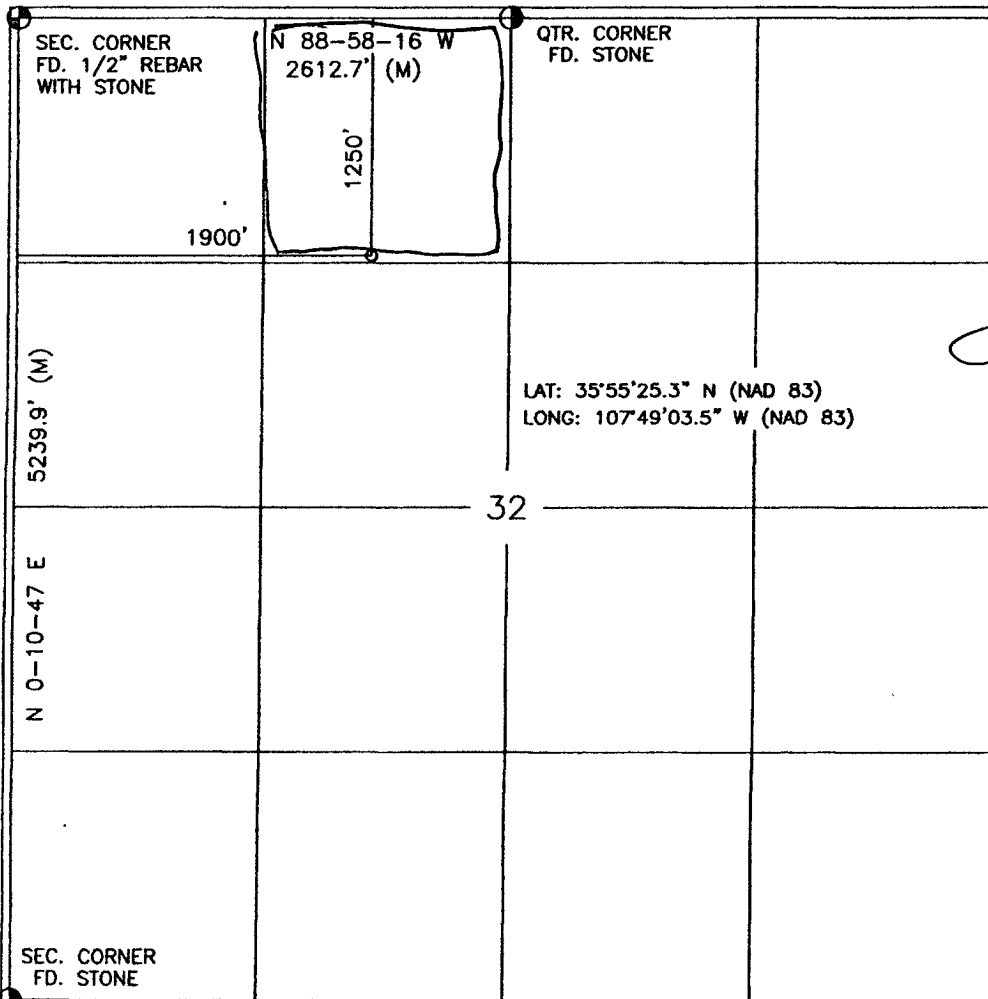
UL or lot no.	Section	Township	Range	Lot Idn	Feet from the	North/South line	Feet from the	East/West line	County
C	32	20-N	9-W		1250'	NORTH	1900	WEST	McKINLEY

<sup>11</sup> Bottom Hole Location If Different From Surface

UL or lot no.	Section	Township	Range	Lot Idn	Feet from the	North/South line	Feet from the	East/West line	County
<sup>12</sup> Dedicated Acres 40		<sup>13</sup> Joint or Infill		<sup>14</sup> Consolidation Code		<sup>15</sup> Order No.			

NO ALLOWABLE WILL BE ASSIGNED TO THIS COMPLETION UNTIL ALL INTERESTS HAVE BEEN CONSOLIDATED OR A NON-STANDARD UNIT HAS BEEN APPROVED BY THE DIVISION

16



<sup>17</sup> OPERATOR CERTIFICATION

I hereby certify that the information contained herein is true and complete to the best of my knowledge and belief

*[Signature]*  
Signature

DON L. HANOSH  
Printed Name

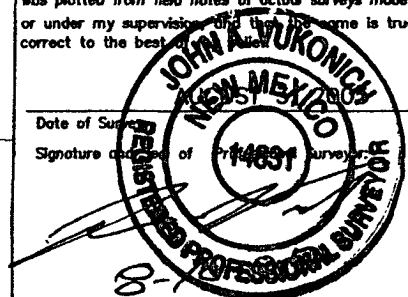
GENERAL MANAGER  
Title

9-13-05  
Date

<sup>18</sup> SURVEYOR CERTIFICATION

I hereby certify that the well location shown on this plat was plotted from field notes of actual surveys made by me or under my supervision and that the same is true and correct to the best of my knowledge and belief

Date of Survey  
Signature of Professional Surveyor



14831  
Certificate Number

107°50'00" E

107°49'00" E

WGS84 107°48'00" E

**ENERDYNE LLC**

**ENDY 101**

**NW/4 SEC. 32, T20N, R9W, N.M.P.M.**

**McKINLEY COUNTY, NEW MEXICO**

**1250 FNL 1900 FWL**

35°57'00" N

35°57'00" N

35°56'00" N

35°56'00" N

35°55'00" N

35°55'00" N

107°50'00" E

107°49'00" E

WGS84 107°48'00" E

**ENDY 101**

**LAT. 35.55.25.3 N (NAD 83)**

**LONG. 107.49.03.5 W (NAD 83)**

32

33

Drill Hole

Drill Holes

Well

Red Mountain

20

21

19

30

28

31

32

33

RED MOUNTAIN OIL FIELD

