

RCVD MAY 30 '08  
OIL CONS. DIV.

DIST. 3

Form 3160-3  
(August 1999)

2007 MAY -4 AM 10: 58

FORM APPROVED  
OMB NO 1004-0136  
Expires November 30, 2000

UNITED STATES  
DEPARTMENT OF THE INTERIOR  
BUREAU OF LAND MANAGEMENT  
APPLICATION FOR PERMIT TO DRILL OR REENTER

RECEIVED

1a TYPE OF WORK



DRILL



REENTER

b TYPE OF WELL



OIL



GAS WELL



OTHER



SINGLE ZONE



MULTIPLE ZONE

2 Name of Operator

Coleman Oil & Gas, Inc.

3a Address

P.O. Drawer 3337, Farmington N.M. 87499

3b Phone No (include area code)

(505) 327-0356

4 Location of well (Report location clearly and in accordance with any State requirements \*)

At surface

1325' FSL, 1085' FEL Latitude 36.309819°, Longitude 107.984987°

At proposed prod zone

14 DISTANCE IN MILES AND DIRECTION FROM NEAREST TOWN OR POST OFFICE\*

South East of Farmington New Mexico on County RD. 7500 approximately 50 miles.

12 County or Parish

San Juan

13 State

NM

15 Distance from proposed\*

location to nearest  
property or lease line, ft

1085

(Also to nearest drlg unit line, if any)

16 No. of Acres in lease

840.32

17 Spacing Unit dedicated to this well

320 ACRES E/2

18 Distance from proposed location\*

to nearest well, drilling, completed,  
applied for, on this lease, ft

2660

19 Proposed Depth

1235'

20 BLM/ BIA Bond No on file

BLM Blacket Bond #08510612

21 ELEVATIONS (Show whether DF RT, GR, etc )

6490'

22 Approximate date work will start\*

August-07

23 Estimated Duration

2 Weeks

24. Attachments

The following, completed in accordance with the requirements of Onshore Oil and Gas Order No. 1 shall be attached to this form:

- 1 Well plat. certified by a registered surveyor
- 2 A Drilling Plan
- 3 A Surface Use Plan ( if the location is on National Forest System Lands, the SUPO shall be filed with the appropriate Forest Service Office)
- 4 Bond to cover the operations unless covered by existing bond on file(see item 20 above)
- 5 Operator certification
- 6 Such other site specific information and/ or plans as may be required by the a authorized officer

25 Signature

*Michael T. Hanson*

Name (Printed/ Typed)

Michael T. Hanson

DATE

3-May-07

Title

Operations Engineer

Approved By (Signature)

*[Signature]*  
AFM

Name (Printed/ Typed)

FFO

Title

DATE

5/28/08

Application approval does not warrant or certify that the applicant holds legal or equitable title to those rights in the subject lease which would entitle the applicant to conduct operations thereon

Conditions of approval, if any, are attached

Title 18 U S C Section 1001 and Title 43 U S C Section 1212, make it a crime for any person knowingly and willfully to make to any department or agency of the United States any false, fictitious or fraudulent statements or representations as to any matter within its jurisdiction

\*See Instructions On Reverse Side

NOTIFY AZTEC OCD 24 HRS.  
PRIOR TO CASING & CEMENT

NMOCD

JUN 16 2008

DRILLING OPERATIONS AUTHORIZED ARE  
SUBJECT TO COMPLIANCE WITH ATTACHED  
"GENERAL REQUIREMENTS".

This action is subject to technical and  
procedural review pursuant to 43 CFR 3165.3  
and appeal pursuant to 43 CFR 3165.4

DISTRICT I  
P.O. Box 1980, Hobbs, N.M. 88241-1980

DISTRICT II  
811 South First, Artesia, N.M. 88210

DISTRICT III  
1000 Rio Brazos Rd., Aztec, N.M. 87410

DISTRICT IV  
2040 South Pacheco, Santa Fe, NM 87504-2088

State of New Mexico  
Energy, Minerals & Natural Resources Department

OIL CONSERVATION DIVISION

P.O. Box 2088  
Santa Fe, NM 87504-2088

Form C-102

Revised February 21, 1994

Instructions on back

Submit to Appropriate District Office

State Lease - 4 Copies

Fee Lease - 3 Copies

2007 MAY -4 AM 10:58

☐ AMENDED REPORT

WELL LOCATION AND ACREAGE DEDICATION PLAT

<sup>1</sup> API Number 20 045-343021	<sup>2</sup> Pool Code 71629	<sup>3</sup> Pool Name Barrin Fruitland Coal
<sup>4</sup> Property Code 35877	<sup>5</sup> Property Name JUNIPER WEST COM 15	<sup>6</sup> Well Number 44
<sup>7</sup> GRID No 4838	<sup>8</sup> Operator Name COLEMAN OIL & GAS, INC.	<sup>9</sup> Elevation 6490

<sup>10</sup> Surface Location

UL or lot no	Section	Township	Range	Lot Idn	Feet from the	North/South line	Feet from the	East/West line	County
P	15	24 N	11 W		1325	SOUTH	1085	EAST	SAN JUAN

<sup>11</sup> Bottom Hole Location If Different From Surface

UL or lot no	Section	Township	Range	Lot Idn	Feet from the	North/South line	Feet from the	East/West line	County

<sup>12</sup> Dedicated Acres 326.48 E2	<sup>13</sup> Joint or Infill	<sup>14</sup> Consolidation Code	<sup>15</sup> Order No
--	-------------------------------	----------------------------------	------------------------

NO ALLOWABLE WILL BE ASSIGNED TO THIS COMPLETION UNTIL ALL INTERESTS HAVE BEEN CONSOLIDATED  
OR A NON-STANDARD UNIT HAS BEEN APPROVED BY THE DIVISION

16 S 89°23'26" E 2674.45' N 1°58'44" W 2675.58' N 2°03'29" W N 89°09'30" W	2627.38' SECTION 15 2547.04'	S 89°26'54" E 2626.88' 2686.78' S 0°20'14" E 2681.62' S 0°15'33" E 2547.00'	17 OPERATOR CERTIFICATION I hereby certify that the information contained herein is true and complete to the best of my knowledge and belief. Signature: <u>Michael T. Hanson</u> Printed Name: <u>Michael T. Hanson</u> Title: <u>OPERATIONS Engineer</u> Date: <u>May 3, 2007</u>
LAT. N 36.309819° LONG. W 107.984987° NAD 83 1085'			18 SURVEYOR CERTIFICATION I hereby certify that the well location shown on this plat was plotted from field notes of actual surveys made by me or under my supervision, and that the same is true and correct to the best of my belief. Date of Survey: <u>9/20/06</u> Signature and Seal of Professional Surveyor: <u>Robert L. Pounds</u> Certificate Number: <u>6846</u>

Submit 3 Copies To Appropriate District  
Office  
District I  
1625 N French Dr., Hobbs, NM 88240  
District II  
1301 W. Grand Ave., Artesia, NM 88210  
District III  
1000 Rio Brazos Rd., Aztec, NM 87410  
District IV  
1220 S St Francis Dr., Santa Fe, NM  
87505

State of New Mexico  
Energy, Minerals and Natural Resources

Form C-103  
May 27, 2004

OIL CONSERVATION DIVISION  
1220 South St. Francis Dr.  
Santa Fe, NM 87505

WELL API NO.  
30-045- 34302  
5. Indicate Type of Lease  
STATE ☐ FEE ☐  
6. ~~State~~ Oil & Gas Lease No.  
NMNM-104608

SUNDRY NOTICES AND REPORTS ON WELLS  
(DO NOT USE THIS FORM FOR PROPOSALS TO DRILL OR TO DEEPEN OR PLUG BACK TO A  
DIFFERENT RESERVOIR USE "APPLICATION FOR PERMIT" (FORM C-101) FOR SUCH  
PROPOSALS)

1. Type of Well: Oil Well ☐ Gas Well ☒ Other

2. Name of Operator  
COLEMAN OIL & GAS, INC.

3. Address of Operator  
P. O. DRAWER 3337, FARMINGTON, NM 87499

4. Well Location  
Unit Letter: P 1325' FSL & 1085' FEL  
Section 15 Township 24 N Range 11 W NMPM SAN JUAN County

11. Elevation (Show whether DR, RKB, RT, GR, etc.)  
6,490' GL

Pit or Below-grade Tank Application ☒ or Closure ☒

Pit type: DRILLING Depth to Groundwater: >100' Distance from nearest fresh water well: >5,000' Distance from nearest surface water: >150'

Pit Liner Thickness: 12 mil Below-Grade Tank: Volume bbls; Construction Material

12. Check Appropriate Box to Indicate Nature of Notice, Report or Other Data

NOTICE OF INTENTION TO:

PERFORM REMEDIAL WORK ☐ PLUG AND ABANDON ☐  
TEMPORARILY ABANDON ☐ CHANGE PLANS ☐  
PULL OR ALTER CASING ☐ MULTIPLE COMPL ☐

OTHER: DRILLING PIT ☒

SUBSEQUENT REPORT OF:

REMEDIAL WORK ☐ ALTERING CASING ☐  
COMMENCE DRILLING OPNS. ☐ P AND A ☐  
CASING/CEMENT JOB ☐

OTHER: ☐

13. Describe proposed or completed operations. (Clearly state all pertinent details, and give pertinent dates, including estimated date of starting any proposed work). SEE RULE 1103. For Multiple Completions: Attach wellbore diagram of proposed completion or recompletion.

Reserve pit will be lined with 12 mil reinforced plastic.

Will reclaim pit as soon as practical. Free liquids will be pumped off and disposed. Liner will be cut off at mud line. Excess liner will be hauled to county landfill. Pit will then be back filled when dry and reclaimed.

I hereby certify that the information above is true and complete to the best of my knowledge and belief. I further certify that any pit or below-grade tank has been/will be constructed or closed according to NMOCD guidelines ☒ a general permit ☐ or an (attached) alternative OCD-approved plan ☐.

SIGNATURE Brian Wood TITLE: CONSULTANT

DATE: NOVEMBER 11, 2006

Type or print name: BRIAN WOOD E-mail address: brian@permitswest.com

Telephone No.: (505) 466-8120

For State Use Only

APPROVED BY: [Signature] TITLE: Deputy Oil & Gas Inspector, DATE: JUN 16 2008.  
Conditions of Approval (if any): District #3

## OPERATIONS PLAN

**Well Name:** Juniper West Com 15 #44  
**Location:** 1325' FSL, 1085' FEL, Section 15, T-24-N, R-11-W, NMPM  
San Juan County, NM  
**Formation:** Basin Fruitland Coal  
**Elevation:** 6490' GL

Formation:	Top	Bottom	Contents
Nacimiento	Surface	225'	Aquifer
Ojo Alamo	225'	335'	Aquifer
Kirtland	335'	745'	
Fruitland	745'	1035'	Gas
Pictured Cliffs	1035'	1235'	Gas
Total Depth	1235'		

**Drilling Contractor:** Availability

**Mud Program:**

Interval	Type	Weight	Viscosity	Fluid Loss
0' – 120'	Spud	8.4 – 9.0	40 – 50	No Control
120' – 1235'	Non-dispersed	8.4 – 9.0	30 – 60	6cc or less

**Logging Program:** Porosity Log - Triple Litho Density W/ GR and CAL.  
Induction Log – Array Induction W/ GR and SP

**Coring Program:** None

**Casing Program:**

Hole Size	Depth Interval	Casing Size	Weight	Grade
12 1/4"	0' – 120'	8 5/8"	24#	J-55 or K-55
7 7/8"	120' – 1235'	5 1/2"	15.5#	J-55 or K-55

**Tubing Program:**

0' – 1065'	2 7/8"	6.50#	J-55
------------	--------	-------	------

**Float Equipment:**

8 5/8" surface casing - saw tooth guide shoe. One Centralizer.

5 1/2" production casing – Cement guide shoe and self fill insert float collar. Place float one joint above shoe. Five centralizers spaced every other joint above shoe and five centralizers every other joint from top of well straddling Ojo Alamo.

**Wellhead Equipment:**

8 5/8" x 5 1/2" Braiden Head and 5 1/2" x 2 7/8" Tubing Head. Independent Well Head assembly with a minimum rated working pressure of 1000 psig.

**Cementing:**

8 5/8" Surface Casing -

Cement with 92 sacks Class "B" cement with 1/4# celloflake/sx and 2% calcium chloride (108.56 cu. ft.) of slurry, 100% excess to circulate to surface). WOC 12 hrs. Test casing to 750 psi/30 minutes.

5 1/2" Production Casing -

Before cementing circulate hole with at least 1 1/2 hole volumes of mud. Precede cement with 20 bbls of fresh water. Lead with 116 sacks (302.76 cu. ft) of Class "G" with 3% D79 and 1/4# Per sack D29. (Yield = 2.61 cu. ft. /sack; slurry weight = 11.7 PPG). Tail with 90 sacks (113.4 cu. ft.) of Class "G" 50/50 POZ with 2% GEL D-20, 5# Per sack Gilsonite, .1% D46, 1% S-1 and 1/4# Per sack D29. (Yield = 1.26 cu. ft./sack; slurry weight = 13.5 PPG). Total cement volume is 416.16 cu. ft. (100% excess on open hole, calculated on cement volumes).

**BOP and Tests:**

Surface to Surface Total Depth – None

Surface TD to Total Depth – Annular or Double Ram Type 2000 psi (minimum) double gate BOP stack (Reference Figure #1, #2, #3). Prior to drilling out surface casing, test blind rams and casing to 750 psig for 30 minutes; all pipe rams and choke assembly to 750 psig for 30 minutes each.

From Surface TD to Total Depth - choke manifold (Reference Figure #3).

Pipe rams will be actuated at least once each day and blind rams actuated once each trip to test proper functioning. An upper kelly cock valve with handle and drill string safety valves to fit each drill string will be maintained and available on the rig floor.

**Additional information:**

- The Fruitland Coal formation will be completed.
- Anticipated pore pressure for the Fruitland is 250 psi.
- New casing will be utilized.
- Pipe movement (either rotation or reciprocation) will be done if hole conditions permit.

Date: May 3, 2007 Drilling Engineer: Michael T. Jones

# Cementing Usage Plan

Juniper West Com 15 #44

Enter Surface Casing Depth	120	FT
Enter capacity between Surf casin/ hole	0.41271	cu ft per ft
Enter Yield for surface cement job	1.18	cu ft per sack
Enter capacity between Prod/Surface Casings	0.19259	cu ft per ft
Enter Total Depth	1235	FT
Enter Shoe Joint Length	44	FT
Enter PBSD	1191	FT
Enter Capacity between Production/Hole	0.17325	cu ft. per ft
Enter Lead Cement Yield	2.61	cu ft per sack
Enter Tail Cement Yield	1.26	cu ft per sack
Enter Production Casing Capacity	0.0238	bbl per ft
Enter Amount of Tail Cement Required	90	Sacks

Surface Cement Needed (100% excess)      92      Sacks → 108.56   cu ft

TOTAL HOLE REQUIREMENTS      415.34   cu ft of cement

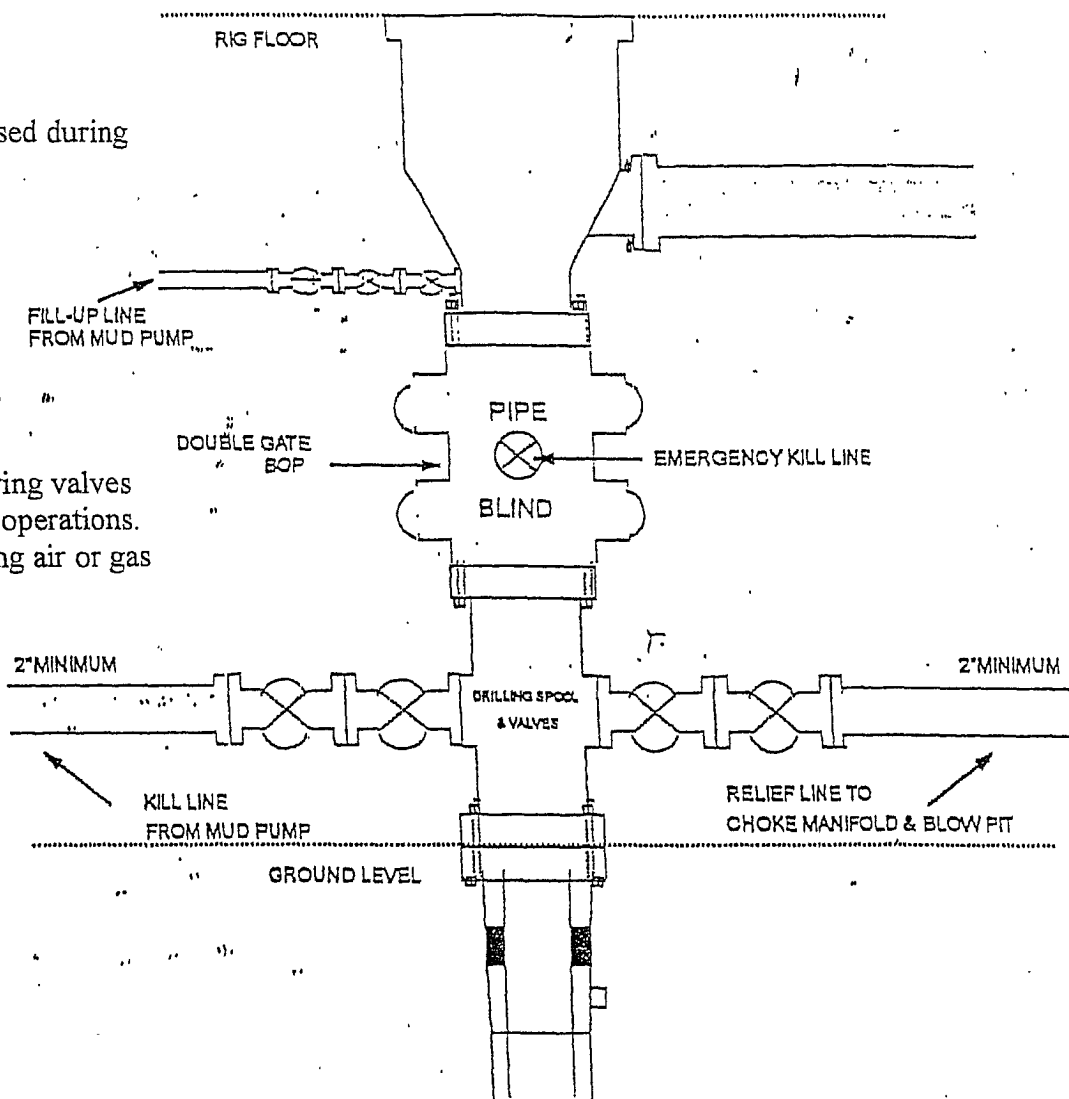
Lead Cement      → 116      Sacks → 302.76 cu ft  
 Tail Cement      → 90      Sacks → 113.40 cu ft

TOTAL CEMENT VOLUME      416.16   cu ft

## BOP Configuration 2M psi System

Rotating head will be used during  
air or gas drilling only.

Drilling spool single wing valves  
during normal drilling operations.  
Dual wing valves during air or gas  
drilling.



13 5/8" and 11" Bore, 2000psi minimum working pressure double gate BOP to be equipped with blind and pipe rams: A Schaffer Type 50 or equivalent rotating head to be installed on the top of the BOP. All equipment is 2000psi working pressure/ or greater.

FIGURE #1

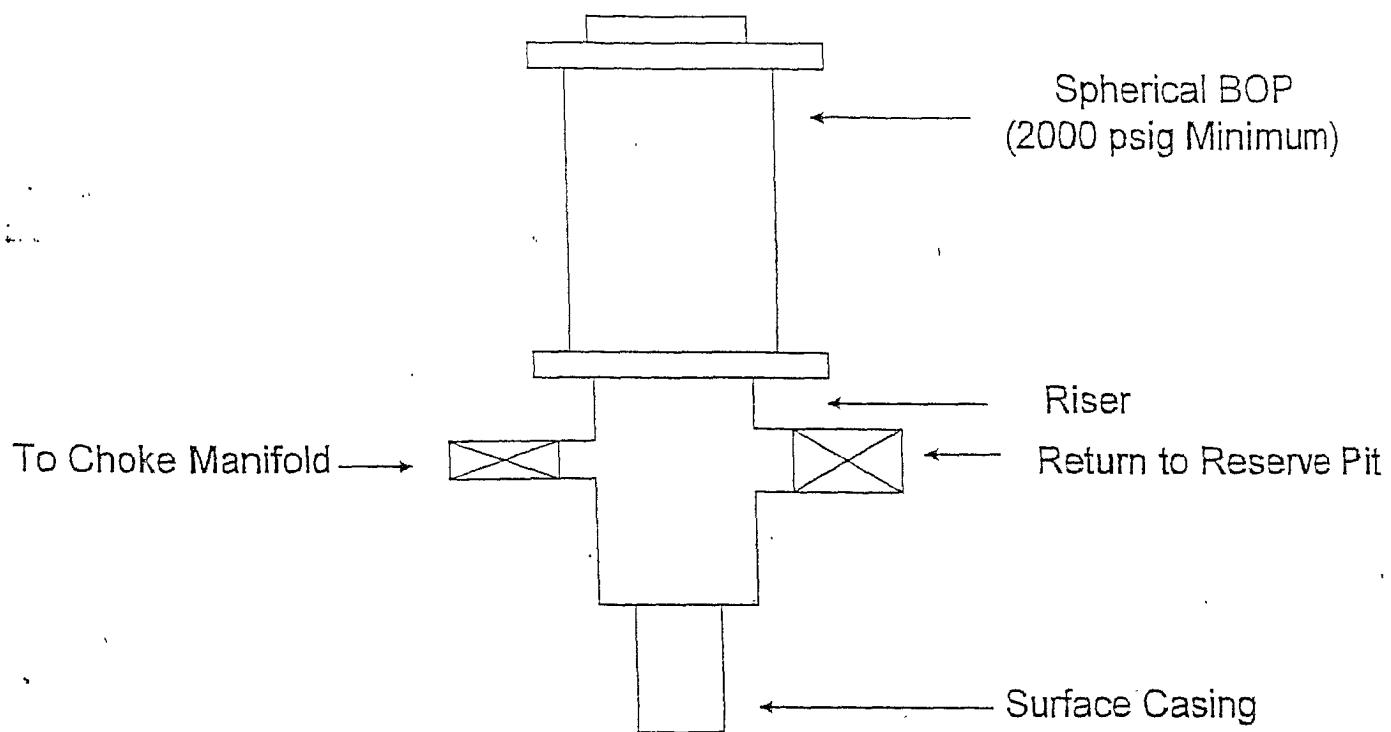
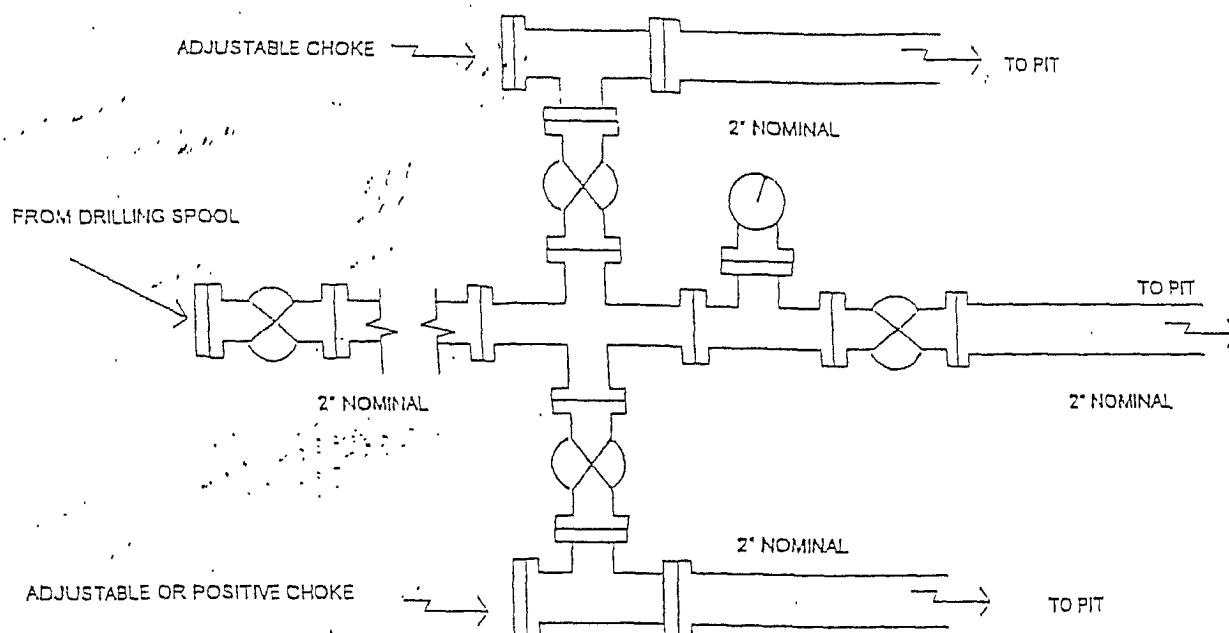


FIGURE #2



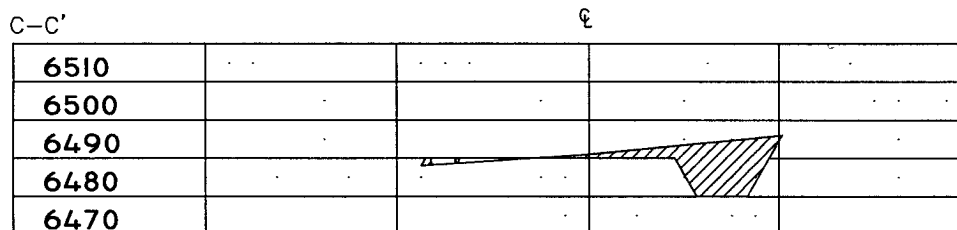
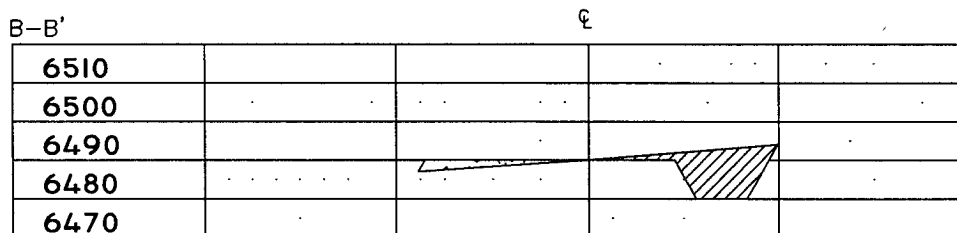
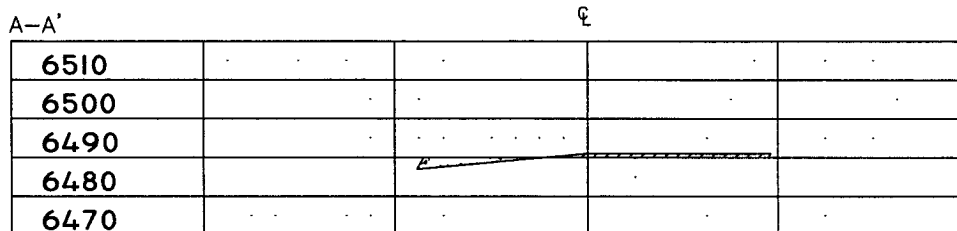
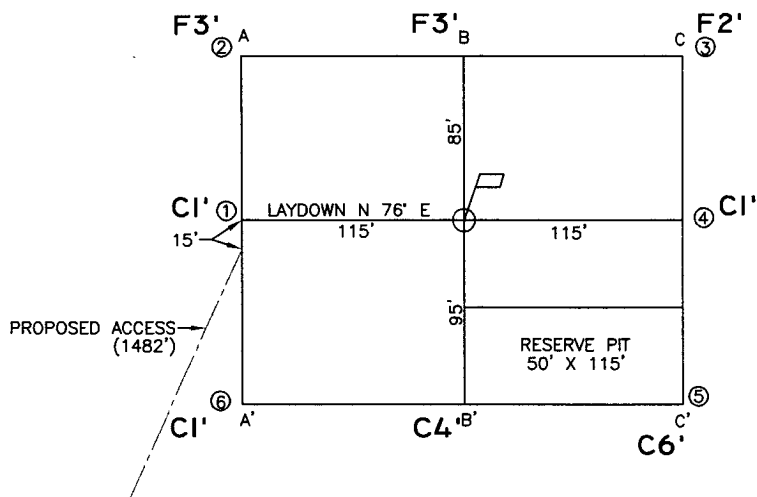
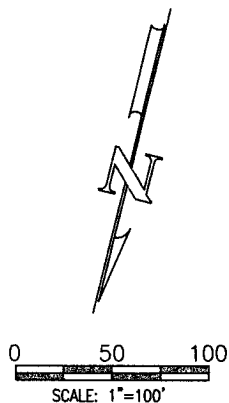
## Choke Manifold Configuration 2M System



Minimum choke manifold installation from surface to Total Depth.  
2" minimum, 2000psi working pressure equipment with two chokes.

Figure #3

NOTIFY  
NEW MEXICO ONE-CALL  
BEFORE COMMENCING  
EXCAVATION!  
(800) 321-2537



CROSS SECTIONS  
HORIZONTAL: 1"=100'  
VERTICAL: 1"=10'

LEASE: JUNIPER WEST COM I5 #44

FOOTAGE: 1325' FSL, 1085' FEL

SEC. 15 TWN. 24 N RNG. 11 W N.M.P.M.

LATITUDE: N 36.309819° LONGITUDE: W 107.984987°

ELEVATION: 6490

COLEMAN OIL & GAS, INC.  
FARMINGTON, NEW MEXICO

SURVEYED: 9/20/06

REV. DATE:

APP. BY R.P.

DRAWN BY: A.D.

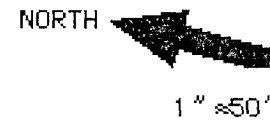
DATE DRAWN: 9/25/06

FILE NAME: 7151C01



P.O. BOX 3651  
FARMINGTON, NM 87499  
OFFICE: (505) 334-0408

Coleman Oil & Gas, Inc.  
Juniper West Com 15 #44  
1325' FSL & 1085' FEL  
Sec. 15, T. 24 N., R. 11 W.  
San Juan County, New Mexico



INSTALL  
24" x 30'  
CULVERT

