

District I  
1625 N French Dr, Hobbs, NM 88240  
District II  
1301 W Grand Avenue, Artesia, NM 88210  
District III  
1000 Rio Brazos Road, Aztec, NM 87410  
District IV  
1220 S St Francis Dr, Santa Fe, NM 87505

State of New Mexico  
Energy Minerals and Natural Resources

Form C-101  
May 27, 2004

Oil Conservation Division  
1220 South St. Francis Dr.  
Santa Fe, NM 87505

Submit to appropriate District Office

☐ AMENDED REPORT

APPLICATION FOR PERMIT TO DRILL, RE-ENTER, DEEPEN, PLUGBACK, OR ADD A ZONE

<sup>1</sup> Operator Name and Address <b>El Pamco, Inc.</b> <b>P. O. Box 14738 Albuquerque, NM 87191-4738</b>		<sup>2</sup> OGRID Number <b>006834</b>
<sup>3</sup> Property Code <b>37212</b>	<sup>5</sup> Property Name <b>Rainbows End</b>	<sup>4</sup> API Number <b>30-045-34735</b>
<sup>9</sup> Proposed Pool 1 <b>Basin Fruitland Coal (71629)</b>		<sup>6</sup> Well No <b>1S</b>
<sup>10</sup> Proposed Pool 2		

<sup>7</sup> Surface Location

UL or lot no <b>I</b>	Section <b>24</b>	Township <b>29N</b>	Range <b>11W</b>	Lot Idn	Feet from the <b>1700</b>	North/South line <b>South</b>	Feet from the <b>1085</b>	East/West line <b>East</b>	County <b>San Juan</b>
--------------------------	----------------------	------------------------	---------------------	---------	------------------------------	----------------------------------	------------------------------	-------------------------------	---------------------------

<sup>8</sup> Proposed Bottom Hole Location If Different From Surface

UL or lot no	Section	Township	Range	Lot Idn	Feet from the	North/South line	Feet from the	East/West line	County
--------------	---------	----------	-------	---------	---------------	------------------	---------------	----------------	--------

Additional Well Information

<sup>11</sup> Work Type Code <b>N</b>	<sup>12</sup> Well Type Code <b>G</b>	<sup>13</sup> Cable/Rotary <b>R</b>	<sup>14</sup> Lease Type Code <b>P</b>	<sup>15</sup> Ground Level Elevation <b>5470'</b>
<sup>16</sup> Multiple <b>No</b>	<sup>17</sup> Proposed Depth <b>1858'</b>	<sup>18</sup> Formation <b>Pictured Cliffs</b>	<sup>19</sup> Contractor <b>Unknown</b>	<sup>20</sup> Spud Date <b>Upon approval</b>
Depth to Groundwater <b>&lt;50'</b>		Distance from nearest fresh water well <b>&gt;1000'</b>		Distance from nearest surface water <b>&lt;1000' 200</b>
Pit. Liner Synthetic <input type="checkbox"/> _____ mils thick Clay <input type="checkbox"/> Pit Volume _____ bbls Drilling Method Closed-Loop System <b>XX</b> Fresh Water <b>XX</b> Brine <input type="checkbox"/> Diesel/Oil-based <input type="checkbox"/> Gas/Air <input type="checkbox"/>				

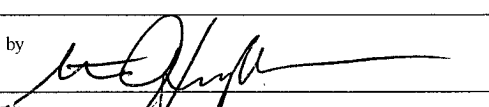
<sup>21</sup> Proposed Casing and Cement Program


Hole Size	Casing Size	Casing weight/foot	Setting Depth	Sacks of Cement	Estimated TOC
<b>12 1/4"</b>	<b>8 5/8"</b>	<b>23#</b>	<b>120'</b>	<b>100 sx (119 cf)</b>	<b>Surface</b>
<b>7 7/8"</b>	<b>5 1/2"</b>	<b>15.5#</b>	<b>1858'</b>	<b>200 sx (412 cf)</b>	
			<b>+</b>	<b>100 sx (119 cf)</b>	<b>Surface</b>

<sup>22</sup> Describe the proposed program. If this application is to DEEPEN or PLUG BACK, give the data on the present productive zone and proposed new productive zone. Describe the blowout prevention program, if any. Use additional sheets if necessary.

**A 2000 psi rated blowout prevention system will be used, consisting of both blind rams and pipe rams.**

RCVD JUN 11 '08  
OIL CONS. DIV.  
DIST. 9  
NOTIFY AZTEC OCD 24 HRS.  
PRIOR TO CASING & CEMENT

<sup>23</sup> I hereby certify that the information given above is true and complete to the best of my knowledge and belief. I further certify that the drilling pit will be constructed according to NMOCD guidelines <input type="checkbox"/> , a general permit <input type="checkbox"/> , or an (attached) alternative OCD-approved plan <input type="checkbox"/> .	OIL CONSERVATION DIVISION	
Signature <b>Dana L. Delventhal</b>	Approved by 	
Printed name <b>Dana L. Delventhal</b>	Title <b>DEPUTY OIL &amp; GAS INSPECTOR, DIST. 9</b>	
Title <b>Agent</b>	Approval Date <b>JUN 16 2008</b> Expiration Date <b>JUN 16 2010</b>	
E-mail Address <b>ddelventhal@qwest.net</b>		
Date <b>6/10/08</b>	Phone <b>(505) 326-4125</b>	Conditions of Approval Attached <input type="checkbox"/> <b>Vulnerable area</b>

**NO below grade pits or tanks**  
**JUN 16 2008** 

Submit to Appropriate District Office  
State Lease - 4 Copies  
Fee Lease - 3 Copies

1220 South St. Francis Dr.  
Santa Fe, NM 87505

DISTRICT IV  
1220 South St. Francis Dr., Santa Fe, NM 87505

☐ AMENDED REPORT

## WELL LOCATION AND ACREAGE DEDICATION PLAT

<sup>1</sup> API Number 30-045-34735	<sup>2</sup> Pool Code 71629	<sup>3</sup> Pool Name Basin Fruitland Coal
<sup>4</sup> Property Code 37212	<sup>5</sup> Property Name RAINBOWS END	<sup>6</sup> Well Number 1S
<sup>7</sup> OGRID No. 006834	<sup>8</sup> Operator Name EL PAMCO INC.	<sup>9</sup> Elevation 5470

<sup>10</sup> Surface Location

UL or lot no.	Section	Township	Range	Lot Idn	Feet from the	North/South line	Feet from the	East/West line	County
1	24	29-N	11-W		1700	SOUTH	1085	EAST	SAN JUAN

<sup>11</sup> Bottom Hole Location If Different From Surface

UL or lot no.	Section	Township	Range	Lot Idn	Feet from the	North/South line	Feet from the	East/West line	County
<sup>12</sup> Dedicated Acres <b>320 (S/2)</b>			<sup>13</sup> Joint or Infill <b>I</b>		<sup>14</sup> Consolidation Code <b>C</b>		<sup>15</sup> Order No.		

NO ALLOWABLE WILL BE ASSIGNED TO THIS COMPLETION UNTIL ALL INTERESTS HAVE BEEN CONSOLIDATED  
OR A NON-STANDARD UNIT HAS BEEN APPROVED BY THE DIVISION

16		CALC'D. CORNER BY DIST./DIST. INTERSECT (FROM REF. MONUMENTS)	
			N 00-20-52 E 5242.83' (C)
	24   LAT: 36.70879° N. (NAD 83) LONG: 107.93781° W. (NAD 83)  LAT: 36°42'31.6" N. (NAD 27) LONG: 107°56'16.1" W. (NAD 27)		
	Fee  N 89-57-51 W 5241.62' (M)	1085'  1700'	
FD. 3 1/4" BC. 1992 L.S. No. 9672		FD. 3 1/4" BC. 1999 B.L.M.	

### OPERATOR CERTIFICATION

I hereby certify that the information contained herein is true and complete to the best of my knowledge and belief, and that this organization either owns a working interest or unleased mineral interest in the land including the proposed bottom hole location or has a right to drill this well at this location pursuant to a contract with an owner of such a mineral or working interest, or to a voluntary pooling agreement or a compulsory pooling order heretofore entered by the division.

Dana L. Delventhal  
 Signature

6/10/08  
 Date

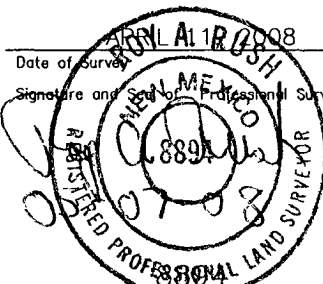
Dana L. Delventhal  
 Printed Name

### 18 SURVEYOR CERTIFICATION

I hereby certify that the well location shown on this plat was plotted from field notes of actual surveys made by me or under my supervision, and that the same is true and correct to the best of my knowledge and belief.

ROYAL ALBERTSON  
 Date of Survey

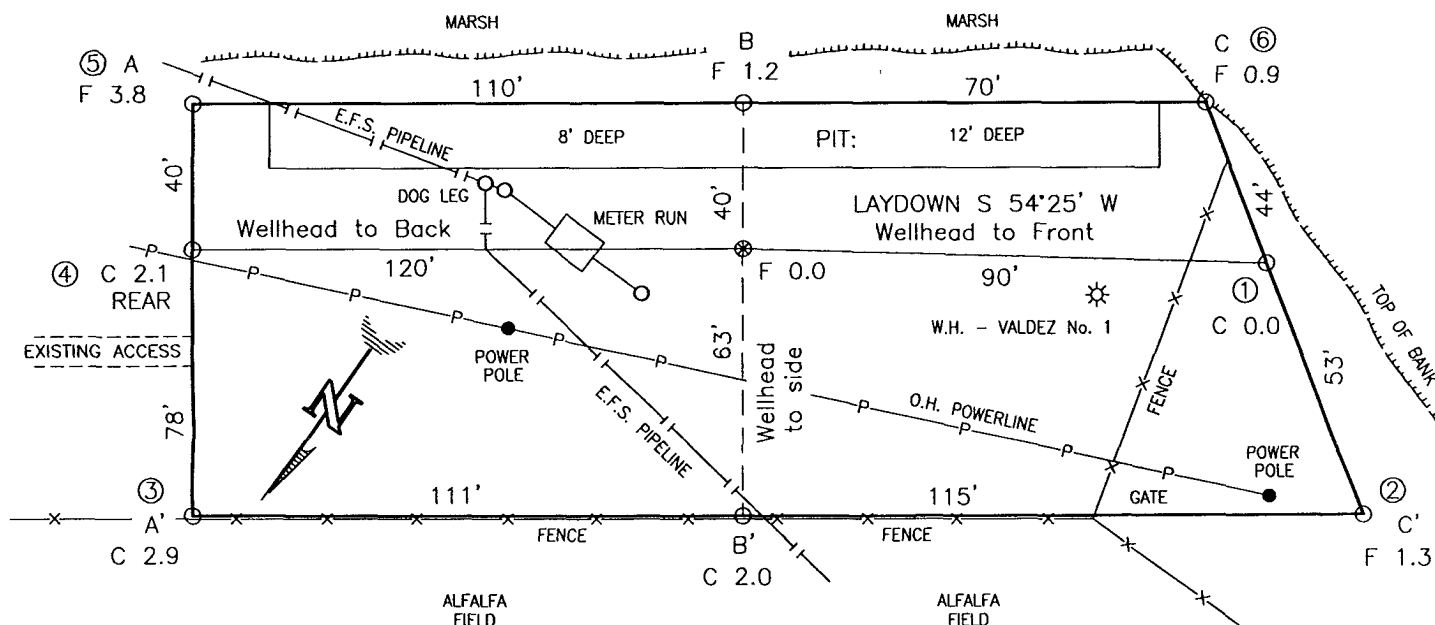
ROYAL ALBERTSON  
 Signature and Seal of Professional Surveyor:



Certificate Number \_\_\_\_\_

EL PAMCO INC.  
 RAINBOWS END No. 1S, 1700 FSL 1085 FEL  
 SECTION 24, T29N, R11W, N.M.P.M., SAN JUAN COUNTY, N.M.  
 GROUND ELEVATION: 5470' DATE: APRIL 11, 2008

NAD 83  
 LAT. = 36.70879° N  
 LONG. = 107.93781° W  
 NAD 27  
 LAT. = 36°42'31.6" N  
 LONG. = 107°56'16.1" W



RESERVE PIT DIKE: TO BE 8' ABOVE DEEP SIDE (OVERFLOW - 3' WIDE AND 1' ABOVE SHALLOW SIDE).  
 BLOW PIT: OVERFLOW PIPE HALFWAY BETWEEN TOP AND BOTTOM AND TO EXTEND OVER PLASTIC LINER AND INTO BLOW PIT.

NOTE: DAGGETT ENTERPRISES, INC. IS NOT LIABLE FOR UNDERGROUND UTILITIES OR PIPELINES. NEW MEXICO ONE CALL TO BE NOTIFIED 48 HOURS PRIOR TO EXCAVATION OR CONSTRUCTION.

ELEV. A-A'

C/L

ELEV.	A-A'	C/L
5480		
5470		
5460		
5450		

ELEV. B-B'

C/L

ELEV.	B-B'	C/L
5480		
5470		
5460		
5450		

ELEV. C-C'

C/L

ELEV.	C-C'	C/L
5480		
5470		
5460		
5450		

NOTE: CONTRACTOR SHOULD CALL ONE-CALL FOR LOCATION OF ANY MARKED OR UNMARKED BURIED PIPELINES OR CABLES ON WELL PAD AND OR ACCESS ROAD AT LEAST TWO (2) WORKING DAYS PRIOR TO CONSTRUCTION.

REVISION:	DATE:	REVISED BY:
<p><b>Daggett Enterprises, Inc.</b>          Surveying and Oil Field Services          P. O. Box 510 • Farmington, NM 87499          Phone (505) 326-1772 • Fax (505) 326-6019          NEW MEXICO L.S. No. 8894</p>		
DRAWN BY: G.V.	CADFILE: EPC006_CFB	DATE: 5/01/08
ROW#: EPC006		

