

DIST. 3

District I  
1625 N. French Dr., Hobbs, NM 88240  
District II  
1301 W. Grand Avenue, Artesia, NM 88210  
District III  
1000 Rio Brazos Rd., Aztec, NM 87410  
District IV  
1220 S. St. Francis Dr., Santa Fe, NM 87505

State of New Mexico  
Energy, Minerals & Natural Resources Department

OIL CONSERVATION DIVISION  
1220 South St. Francis Dr.  
Santa Fe, NM 87505

Form C-102  
Revised October 12, 2005  
Instructions on back  
Submit to Appropriate District Office  
State Lease - 4 Copies  
Fee Lease - 3 Copies

☐ AMENDED REPORT

WELL LOCATION AND ACREAGE DEDICATION PLAT

*API Number 30-045-		*Pool Code 71629	*Pool Name BASIN FRUITLAND COAL
*Property Code 7411	*Property Name RANDLEMON		*Well Number 100
*GRID No. 14538	*Operator Name BURLINGTON RESOURCES OIL & GAS COMPANY, LP		*Elevation 5729'

<sup>10</sup> Surface Location

UL or lot no.	Section	Township	Range	Lot Idn	Feet from the	North/South line	Feet from the	East/West line	County
M	23	31N	11W		560	SOUTH	845	WEST	SAN JUAN

<sup>11</sup> Bottom Hole Location If Different From Surface

UL or lot no.	Section	Township	Range	Lot Idn	Feet from the	North/South line	Feet from the	East/West line	County
D	26	31N	11W		710	NORTH	845	WEST	SAN JUAN

<sup>12</sup> Dedicated Acres 320.0 Acres - (N/2)	<sup>13</sup> Joint or In/Out	<sup>14</sup> Consolidation Code	<sup>15</sup> Order No.
--	-------------------------------	----------------------------------	-------------------------

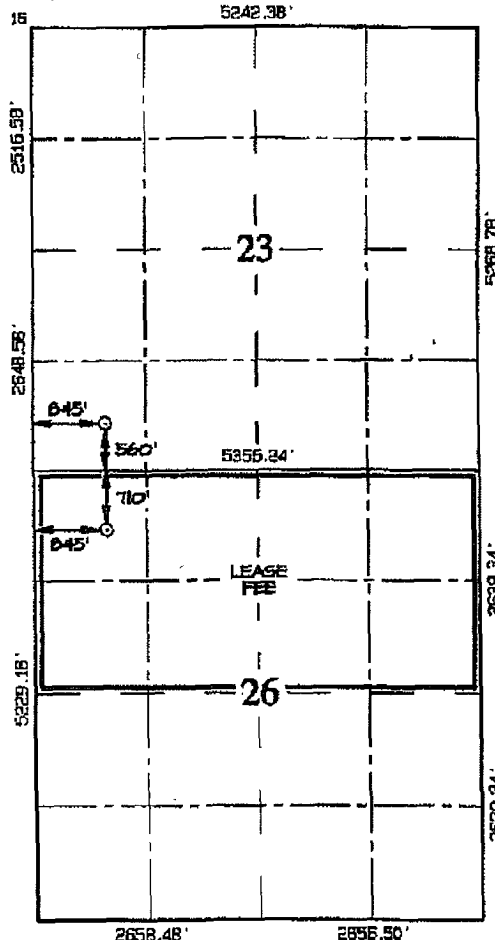
NO ALLOWABLE WILL BE ASSIGNED TO THIS COMPLETION UNTIL ALL INTERESTS HAVE BEEN CONSOLIDATED OR A NON-STANDARD UNIT HAS BEEN APPROVED BY THE DIVISION

SURFACE LOCATION  
LAT: 36°52.7044' N  
LONG: 107°57.8639' W  
DATUM: NAD1927

LAT: 36.87841' N  
LONG: 107.96669' W  
DATUM: NAD1983

BOTTOM-HOLE  
LAT: 36°52.4951' N  
LONG: 107°57.8655' W  
DATUM: NAD1927

LAT: 36.87492' N  
LONG: 107.96671' W  
DATUM: NAD1983



<sup>17</sup> OPERATOR CERTIFICATION

I hereby certify that the information contained herein is true and complete to the best of my knowledge and belief, and that this organization either owns a working interest or unleased mineral interest in the land including the proposed bottom-hole location or has a right to drill this well at this location pursuant to a contract with an owner of such a mineral or working interest, or to a voluntary pooling agreement or a compulsory pooling order heretofore entered by the division.

Signature: Sasha Spangler Date: 2-12-08  
Printed Name: Sasha Spangler

<sup>18</sup> SURVEYOR CERTIFICATION

I hereby certify that the well location shown on this plat was plotted from field notes of actual surveys made by me or under my supervision, and that the same is true and correct to the best of my belief.

Survey Date: JANUARY 28, 2006

Signature and Seal of Professional Surveyor



JASON C. EDWARDS  
Certificate Number: 15269