

UNITED STATES  
DEPARTMENT OF THE INTERIOR  
BUREAU OF LAND MANAGEMENT

RCVD JUN 9 '08  
OIL CONS. DIV.  
DIST. 3

## Sundry Notices and Reports on Wells

1. Type of Well  
GAS

2. Name of Operator  
**BURLINGTON**  
RESOURCES OIL & GAS COMPANY LP

3. Address & Phone No. of Operator

PO Box 4289, Farmington, NM 87499 (505) 326-9700

4. Location of Well, Footage, Sec., T, R, M  
Sec., T--N, R--W, NMPM

Unit N (SENE) 190' FSL & 2355' FWL, Sec. 9, T32N, R14W NMPM

5. Lease Number  
I-22-IND-2772  
6. If Indian, All. or  
Tribe Name  
Ute Mountain Ute  
7. Unit Agreement Name

8. Well Name & Number

Ute Mountain Ute #44  
9. API Well No.

30-045-29498

10. Field and Pool

Barker Dome Desert Creek  
Barker Dome Ismay  
Wildcat Hermosa

11. County and State  
San Juan, NM

## 12. CHECK APPROPRIATE BOX TO INDICATE NATURE OF NOTICE, REPORT, OTHER DATA

## Type of Submission

☒ Notice of Intent

☐ Subsequent Report

☐ Final Abandonment

## Type of Action

☐ Abandonment

☐ Recompletion

☐ Plugging

☐ Casing Repair

☐ Altering Casing

☐ Change of Plans

☐ New Construction

☐ Non-Routine Fracturing

☐ Water Shut off

☐ Conversion to Injection

☐ Other Recomplete Barker Dome Ismay/Wildcat Hermosa

## 13. Describe Proposed or Completed Operations

Burlington Resources requests to recompleate the subject well in the following formations:

Barker Dome Ismay  
Wildcat Hermosa

Please see attached procedure, wellbore diagram and plat.

RECEIVED

MAY 15 2008

Bureau of Land Management  
Durango, Colorado

## 14. I hereby certify that the foregoing is true and correct.

Signed

(S) DAN RABINOWITZ

Tracey N. Monroe

Title Regulatory Technician

Date 5/14/08

(This space for Federal or State Office use)

APPROVED BY

MINERALS STAFF CHIEF

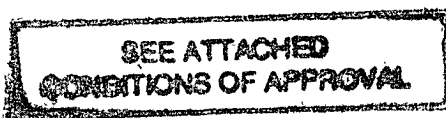
Title

Date

JUN 6 2008

CONDITION OF APPROVAL, if any:

Title 18 U.S.C. Section 1001, makes it a crime for any person knowingly and willfully to make any department or agency of the United States any false, fictitious or fraudulent statements or representations as to any matter within its jurisdiction.



PIT, CLOSED LOOP SYSTEM, BELOW  
GRADE TANK, PROPOSED  
ALTERNATIVE METHOD OR CLOSURE  
PLAN TO BE DESIGNED, CONSTRUCTED  
& OPERATED PURSUANT TO NMOC  
RULE 19.15.17 EFFECTIVE 06/16/08

## **Ute Mountain Ute #44**

Unit N, Section 9, Township 32N, Range 14W

---

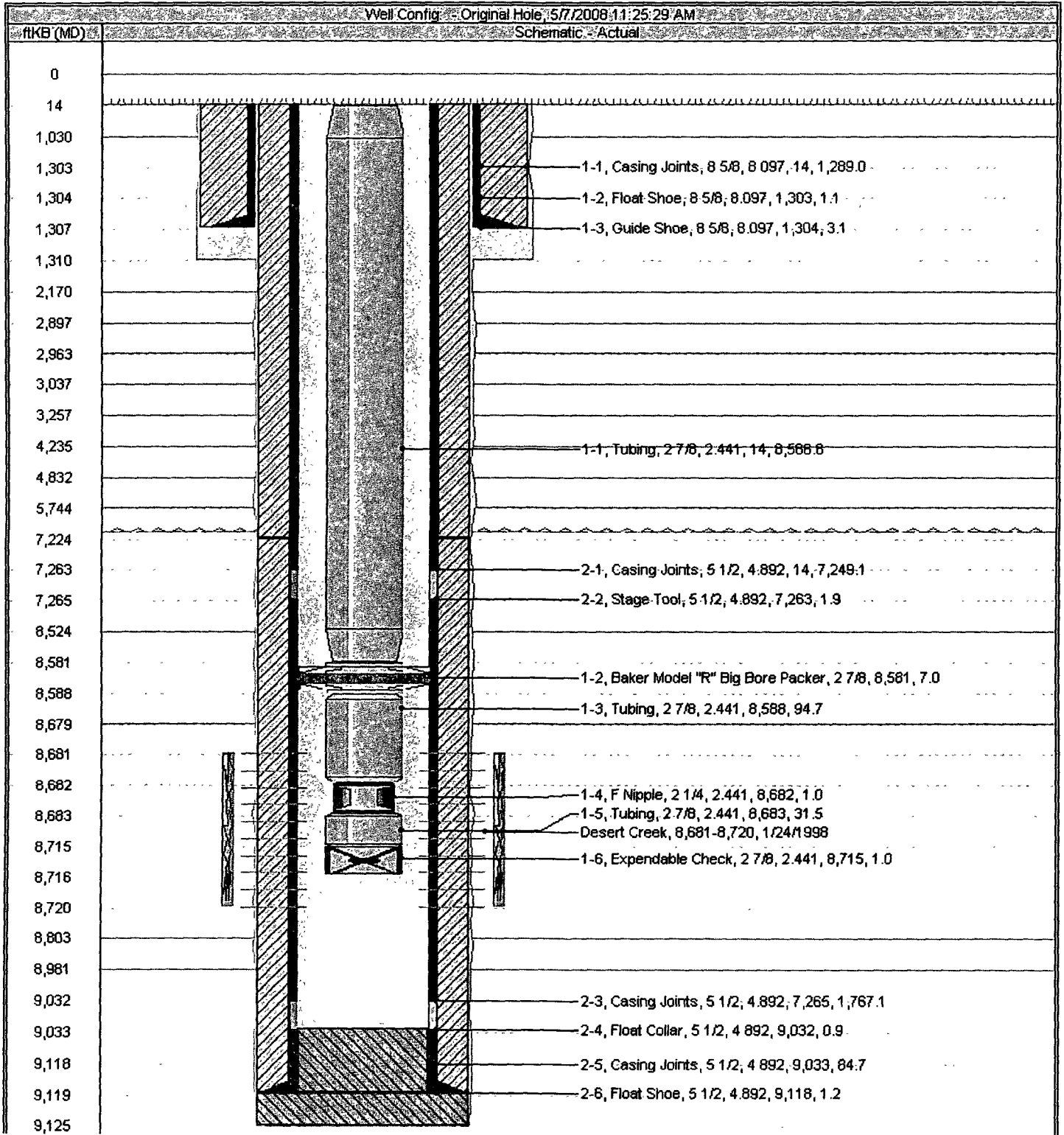
### **Upper Ismay and Hermosa Recomplete**

**3/19/2008**

#### **Procedure:**

1. MIRU service rig TOO H with tubing/packer assembly.
2. Run GR/CCL/CBL log.
3. RIH and set packer above Desert Creek'.
4. Re-acidize Desert Creek Formation with 14,000 gals of foamed 15% HCL down tubing.
5. Cleanup Desert Creek formation.
6. TOO H with packer.
7. Run in hole with Wireline set RBP. Flow test Desert Creek.
8. Run in hole with perf gun and perforate the Upper Ismay.
9. RIH with a packer above Upper Ismay.
10. Acidize Upper Ismay with 14,000 gals of foamed 15% HCL down tubing.
11. Cleanup Upper Ismay formation.
12. TOO H with packer.
13. Run in hole with Wireline set RBP. Flow test Upper Ismay.
14. Run in hole with perf gun and perforate Hermosa.
15. RIH with a packer and set above Hermosa.
16. Acidize Hermosa with 14,000 gals of foamed 15% HCL down tubing.
17. Cleanup Hermosa formation.
18. TOO H with packer.
19. Run in hole with Wireline set RBP. Flow test Hermosa.
20. Shut-in well for a minimum of 7 days.
21. TIH and retrieve bridge plugs.
22. Run 2-7/8" Production tubing.
23. Flow all zones to clean out, and recover any remaining load fluid, flow test.
24. Rig Down.

# Ute Mountain Ute #44 Current Wellbore



District I  
PO Box 1908, Hobbs, NM 88241-1908  
District II  
PO Drawer DD, Artesia, NM 88211-0719  
District III  
1000 N. Main St., Alamogordo, NM 87010  
District IV  
PO Box 1008, Santa Fe, NM 87504-1008

State of New Mexico  
Energy, Minerals & Natural Resources Department

OIL CONSERVATION DIVISION

PO Box 2088  
Santa Fe, NM 87504-2088

Form C  
Revised February 21,  
Instructions on  
Submit to Appropriate District O  
State Lease - 4 C  
Fee Lease - 3 C

☐ AMENDED REPT

WELL LOCATION AND ACREAGE DEDICATION PLAT

API Number 30-015- <del>2249</del>	Well Code 96753	Well Name Barker Dome Desert Creek/Barker Dome I Wilcat Hermosa 932N14N
Property Code 18725	Property Name Ute Mountain Ute	Well Number 44
OCRID No. 14538	Operator Name BURLINGTON RESOURCES OIL & GAS COMPANY LP	Shooting 6867'

10 Surface Location

UL or lot no.	Section	Township	Range	Lot 1/4	Feet from the	North/South line	Feet from the	East/West line	County
N	9	32-N	14-W		190	South	2355	West	S.J.

11 Bottom Hole Location if Different From Surface

UL or lot no.	Section	Township	Range	Lot 1/4	Feet from the	North/South line	Feet from the	East/West line	County

12 Dwyer or other "T" hole or infill 13 Consolidation Code 14 Order No.

525/205/102.5

R-46-B

NO ALLOWABLE WILL BE ASSIGNED TO THIS COMPLETION UNTIL ALL INTERESTS HAVE BEEN CONSOLIDATED  
OR A NON-STANDARD UNIT HAS BEEN APPROVED BY THE DIVISION

<div>16</div> <div>1641.42'</div> <div>2355'</div> <div>190'</div> <div>1653.96'</div> <div>122 IND 2.772</div> <div>16</div>	<div>17 OPERATOR CERTIFICATION</div> <div>I hereby certify that the information contained herein is true and complete to the best of my knowledge and belief.</div> <div>Tracey N. Monroe</div> <div>Tracey N. Monroe</div> <div>Regulatory Technician</div> <div>May 14, 2008</div> <div>Date</div>
	<div>18 SURVEYOR CERTIFICATION</div> <div>I hereby certify that the well location shown on this plat was plotted from field notes of actual surveys made by me or under my supervision, and that the same is true and correct to the best of my belief.</div> <div>4/16/97</div> <div>Date of Survey</div> <div>Signature and Seal of Professional Surveyor</div> <div>NEALE C. EDWARDS</div> <div>NEW MEXICO</div> <div>6857</div> <div>Certificate Number</div>

RECEIVED

MAY 20 2008

Bureau of Land Management  
Durango, Colorado

District I  
PO Box 1980, Hobbs, NM 88241-1980  
District II  
PO Drawer DD, Artesa, NM 88211-0719  
District III  
1000 Mile Brass Rd., Aztec, NM 87410  
District IV  
PO Box 2088, Santa Fe, NM 87504-2088

State of New Mexico  
Energy, Minerals & Natural Resources Department

OIL CONSERVATION DIVISION  
PO Box 2088  
Santa Fe, NM 87504-2088

Form C-10  
Revised February 21, 1999  
Instructions on back  
Submit to Appropriate District Office  
State Lease - 4 Copies  
Fee Lease - 3 Copies

☐ AMENDED REPORT

WELL LOCATION AND ACREAGE DEDICATION PLAT

API Number 30-045-22498	Well Code 9635	Well Name Barker Dome Desert Creek/Barker Dome Ism. Wilcat Hermosa 932N14N
Property Code 18725	Property Name Ute Mountain Ute	Well Number 44
OGRID No. 14538	Operator Name BURLINGTON RESOURCES OIL & GAS COMPANY	Elevation 6867'

10 Surface Location

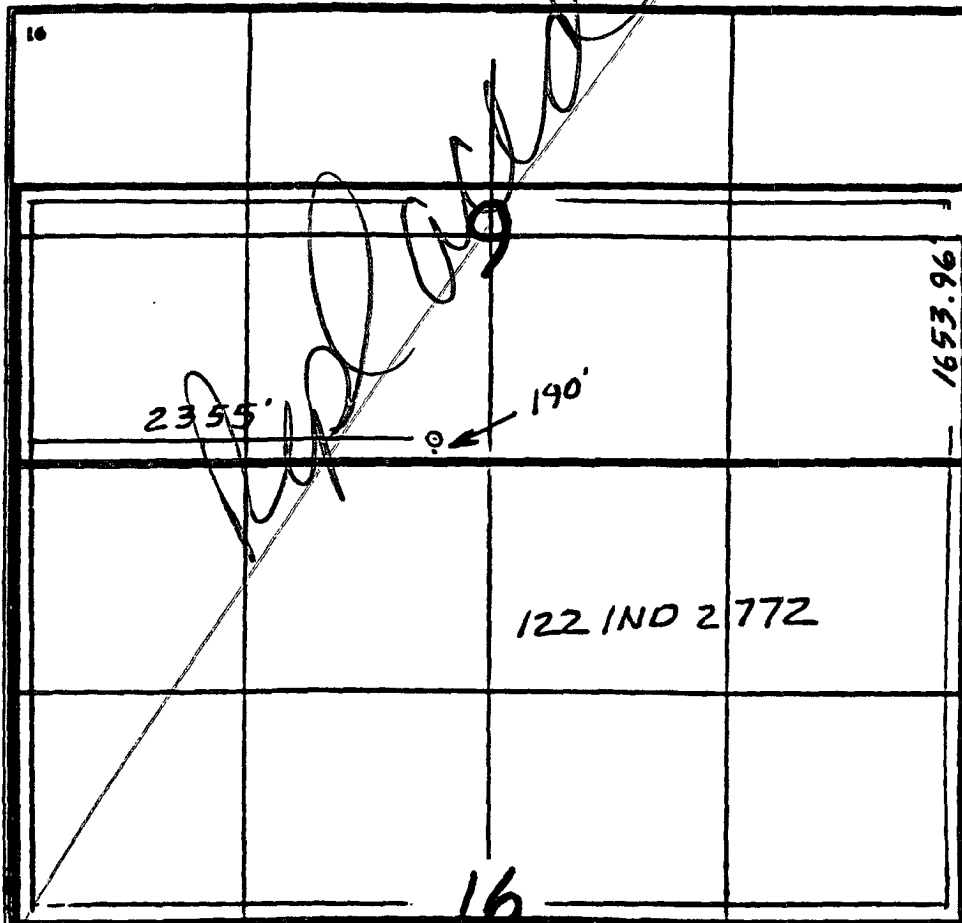
UL or lot no.	Section	Township	Range	Lot Idn	Feet from the	North/South line	Feet from the	East/West line	County
N	9	32-N	14-W		190'	South	2355	West	S.J.

11 Bottom Hole Location if Different From Surface

UL or lot no.	Section	Township	Range	Lot Idn	Feet from the	North/South line	Feet from the	East/West line	County

12 Dedication  
525 205  
13 Joint or Infill  
14 Constitution Code  
15 Order No.

NO ALLOWABLE WILL BE ASSIGNED TO THIS COMPLETION UNTIL ALL INTERESTS HAVE BEEN CONSOLIDATED  
OR A NON-STANDARD UNIT HAS BEEN APPROVED BY THE DIVISION



17 OPERATOR CERTIFICATION

I hereby certify that the information contained herein is true and complete to the best of my knowledge and belief

Signature  
Tracey N. Mnroe

Printed Name  
Regulatory Technician

Title  
May 14, 2008

Date

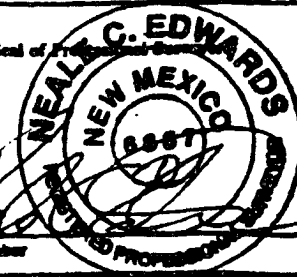
18 SURVEYOR CERTIFICATION

I hereby certify that the well location shown on this plat was plotted from field notes of actual surveys made by me or under my supervision, and that the same is true and correct to the best of my belief.

4/16/97

Date of Survey

Signature and Seal of Professional Surveyor



6857

Certificate Number

Burlington Resources Oil & Gas Company  
Tribal Lease: I-22-IND-2772  
Well: Ute Mountain Ute #44  
Location: 190' FSL & 2355' FWL  
Sec. 9, T. 32 N., R. 14 W.  
San Juan County, New Mexico

3160

**Conditions of Approval:**

1. Approval of this sundry is based upon the understanding that **Only** the Ismay and the Honaker Trail will be opened to the wellbore. Any other formations opened to the wellbore will be considered a violation of the Orders of the Authorized Officer.
2. Shut-in bottom hole pressures for **All** zones and after frac flowrates for **All** zones must be reported to this office on the Sundry Notice, Subsequent Report submitted after the completion of this well. A spinner survey would be adequate. A Completion Report should be submitted within 30 days of the recompletion of this well. Provide an as-is wellbore diagram at this time.