

Albuquerque, NM 87104-1900

State of New Mexico
Energy, Minerals & Natural Resources Department

Revised February
Instruction
Submit to Appropriate District
State License -
Fee License -

OIL CONSERVATION DIVISION
PO Box 2088
Santa Fe, NM 87504-2088

☒ AMENDED

WELL LOCATION AND ACREAGE DEDICATION PLAT

API Number 30-045-29165	Well Code 71560/96354/	Well Name Barker Dome Desert Creek	WC Ref /BarkerDome Ismay/1932N1
Property Code 17211	Property Name Ute Com.	Well Name 23	
Operator No. 14538	Operator Name BURLINGTON RESOURCES OIL & GAS COMPANY LP	Elevation 6259'	

10 Surface Location

US or lot no.	Section	Township	Range	Lot No.	Feet from the	North/South line	Feet from the	East/West line	County
6	19	32N	14W		1820	North	1580	East	S.J.

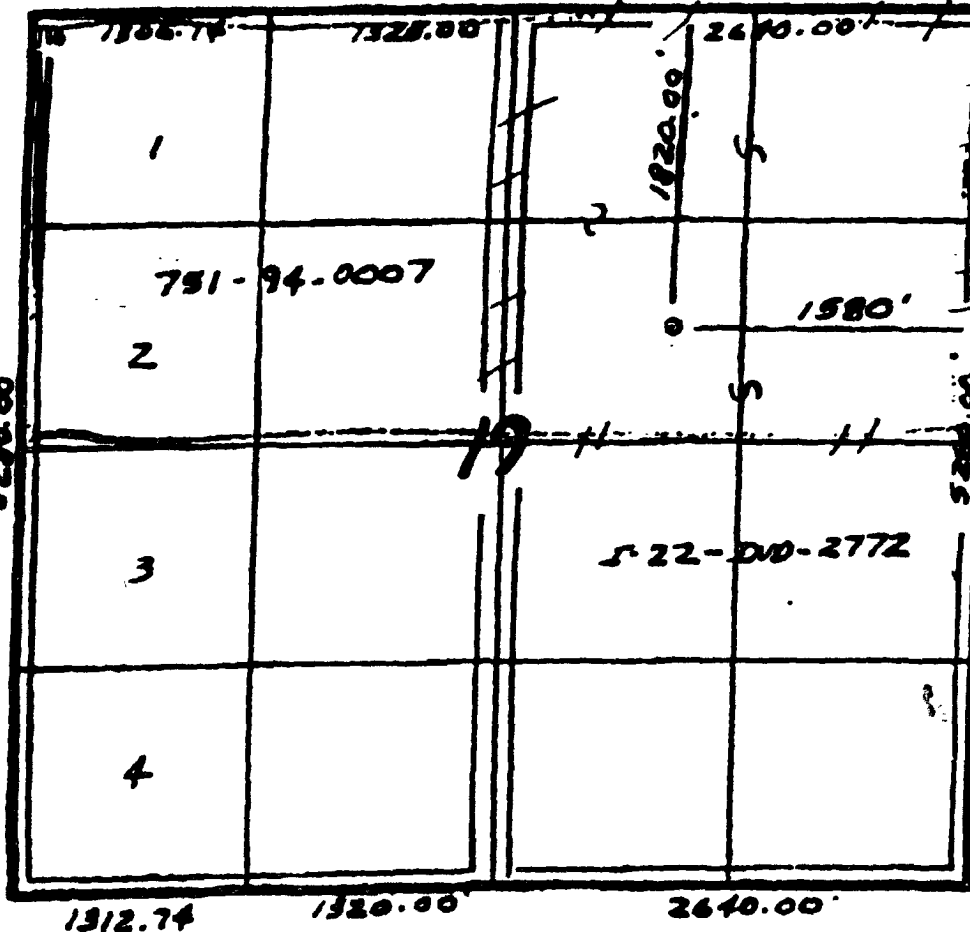
11 Bottom Hole Location if Different From Surface

US or lot no.	Section	Township	Range	Lot No.	Feet from the	North/South line	Feet from the	East/West line	County

Wellhead Area 3207160/160	Notes or Remarks	Consolidation Code	Order No.
-------------------------------------	------------------	--------------------	-----------

OIL CONS. DIV.
DIST. 3

NO ALLOWABLE WELL BE ASSIGNED TO THIS COMPLETION UNTIL ALL INTERESTS HAVE BEEN CONSOLIDATED OR A NON-STANDARD UNIT HAS BEEN APPROVED BY THE DIVISION



17 OPERATOR CERTIFICATION

I hereby certify that the information contained herein is true and complete to the best of my knowledge and belief, and that this organization either owns a working interest or unleased mineral interest in the land including the proposed bottom hole location or has a right to drill this well at this location pursuant to a contract with an owner of such a mineral or working interest, or to a voluntary pooling agreement or a compulsory pooling order heretofore entered by the division.

Signature *Tracey N. Monroe* Date *6/15/08*

Printed Name Tracey N. Monroe

18 SURVEYOR CERTIFICATION

I hereby certify that the well location shown on this plat was plotted from field notes of actual surveys made by me or under my supervision, and that the same is true and correct to the best of my belief.

11-4-94

Date of Survey

Signature and Seal of Professional Surveyor:

6857

Certificate Number